

A-2. Community at Risk: Multnomah Co. RFPD #14 (Corbett)

Multnomah County Rural Fire Protection District #14 (MCRFPD #14) has been identified as a Community at Risk (CAR) by Oregon Department of Forestry. The District has participated in the Multnomah County CWPP planning process to evaluate capabilities to prevent, prepare for and respond to potential wildfire events.

Multnomah Co. RFPD #14 Description

Corbett is a small, rural community bordered by the Sandy River to the West and Highway 84 to the North. This area has steep slopes and homes surrounded by heavy fuels adjacent to industrial timber management operations, Bureau of Land Management holdings, and some USFS land. Many of the neighborhoods have only one way in and one way out and have narrow, steep driveways with poor address signage. Tourism and recreation are huge influences here, with over 2,500 acres of state parks including the Columbia Gorge National Scenic Area. MCRFPD #14 is the first responder to fires occurring on USFS and Scenic area lands.

The District is staffed only by volunteers, which can increase response times and protection capability. The community is susceptible to the Gorge east wind effect, which includes prolonged high wind speeds that dry vegetation and quickly increase the spread of wildfires. According to the Corbett Fire professionals, the biggest threat to these communities is a wildfire starting on USFS land spreads to Corbett from and East wind.

The District communicates well with other agencies that use 800 MHz, and recently received VHF radios through the Urban Area Security Initiative. MCRFPD #14 has 2 Urban Interface Units, Type 3 one with a rated 750 gallon pump and one with a rated 500 gallon pump. This is a self-reliant community that supports active Neighborhood Emergency Response Teams as well as Northeast Multnomah County Community Association (NEMCCA) with a safety action team that meets the first Wednesday of the month. The Fire District connects with the community through an annual open house in October, and a biannual newsletter that goes out in the Spring and Fall.

Multnomah Co. RFPD #14 Wildfire Hazards

The Multnomah County CWPP wildfire hazard assessment assisted MCRFPD #14 in identifying areas that may be at higher risk to potential wildfires. Map 12 illustrates the overall wildfire hazard risk in the Corbett area and will be used to help target areas for wildfire prevention activities.

Local Communities at Risk

The MCRFPD #14 also recognizes that there are smaller-scale Communities at Risk that have unique wildfire hazards to be addressed at the more local scale. Communities that have been identified as being particularly vulnerable to wildfires are illustrated in Map 12 and listed in Table A-2.1. MCRFPD #14 volunteers considered the following factors to determine the local CARs including:

- Need for defensible space
- Access limitations (narrow driveways, lack of address signage, one way in/one way out)
- Steep slopes that can hinder access and accelerate the spread of wildfire
- Lack of water available for wildland fire fighting
- Heavy fuels on adjacent public lands
- Potential ignition sources from recreationists and transients

- Agricultural and backyard burning
- Lack of community outreach programs to promote wildfire awareness
- Communications difficulties

Multnomah Co. RFPD #14 Action Plan

The MCRFPD #14 has developed a list of actions to build capacity at the Department scale and has identified actions that can help to make the local CARS more resilient to potential wildfires. The action plan for MCRFPD #14 and the local CARs therein is provided in Table A-2.2.

Multnomah Co. RFPD #14 CWPP Community Involvement

Multnomah County initiated community involvement and public outreach events for the highest priority Communities at Risk in each Fire Department/District in Multnomah County. The community meeting in Corbett was held for the Trout Creek/Aims Community and had two primary objectives: to gather information from the public about their wildfire concerns and to share information about the fire plan and living with wildfire.

Trout Creek/Aims Community Wildfire Meeting

Date: April 21st, 2011 from 6:30pm-8:30pm

Location: Aims Community Church

Attendance: 50 residents

Facilitators:

- **Multnomah County RFPD #14:** Brent Younker, Assistant Chief
- **ODF:** Chris Paul, Cindy Kolomechuk
- **Multnomah County Emergency Management:** Joe Partridge
- **Columbia River Gorge National Scenic Area:** Roland Rose



Meeting Description

This event was conducted in the form of an evening meeting and hosted by the MCRFPD #14. Assistant Chief Brent Younker opened the meeting and provided introductions and discussed wildfire hazards in the Trout Creek/Aims neighborhood and introduced the measures that landowners have to be more prepared for wildfires. Cindy Kolomechuk provided an overview of the Multnomah County Fire Planning process. Chris Paul then gave a more in depth description regarding the types of fire-resistive building materials to use, how to effectively create defensible

space, and how to provide adequate access. Roland Rose presented some lessons learned from prior wildfires in the Gorge, specifically relating to community preparedness and evacuation. Joe Partridge then discussed tips for being prepared for wildfires as well as other potential hazards in this area.

Information Gleaned from Community

Community members were asked to provide input regarding their perceptions of wildfire risk and rank the highest priority issues in their neighborhood (Table A-2.3 Wildfire Concerns in the Trout Creek/Aims CAR). The MRFPD #14 developed a series of action items (Table A-2.2 MCRFPD #14 Action Plan) to address these and other potential wildfire hazards in the Communities at Risk in their service area.

The highest priority issue is the increased response time (or lack of protection capability) resulting from an all volunteer fire district. This reality can motivate the residents in this community to become better prepared and take a great responsibility in preventing wildfires. Residents are also concerned about the steep, narrow driveways that characterize their neighborhood, which can also increase response times.

Backyard, agricultural and slash burning is also a concern of the residents in the Trout Creek and Aims community. This presents a potential ignition source for structural and wildfires. The other major issue identified was a concern about water availability here. Homes are on well systems, and although there are a few streams and ponds, water would need to be transported into these difficult to access areas to fight wildfires.

Table A-2.3 Wildfire Concerns in the Trout Creek/Aims Community

Topic	Trout Creek/Aims Community
1. Protection Capabilities	High
2. Backyard Burning	High
3. Local Ingress and Egress	High
4. Water Availability	High
5. Evacuation, Emergency Preparedness	Medium
6. Transients/ Recreation	Medium
7. Concerns about Adjacent Public Lands	Low
8. Concerns about Neighboring Private Property	Low



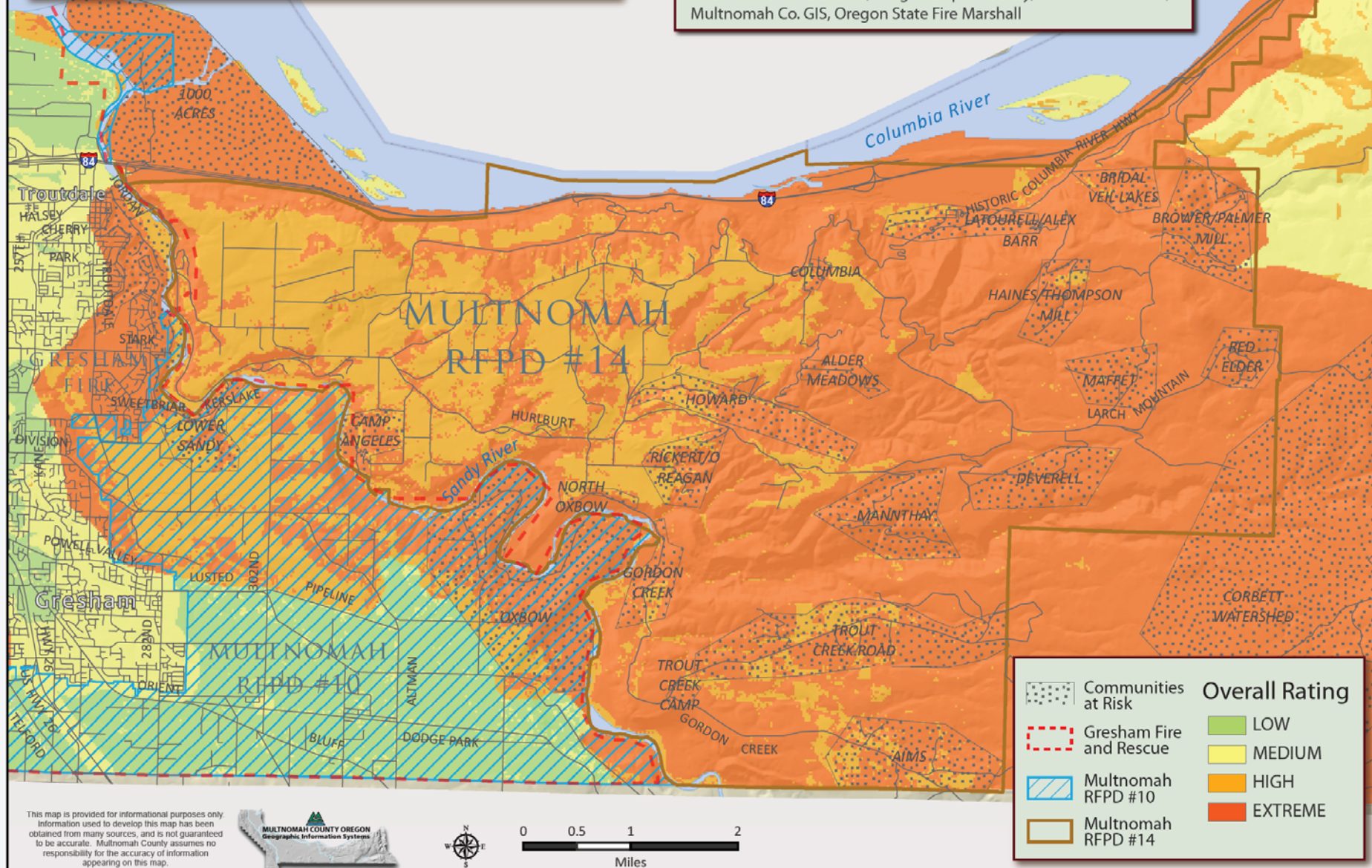
MULTNOMAH CO. RFPD #14 (CORBETT) OVERALL WILDFIRE RISK

COMMUNITY WILDFIRE PROTECTION PLAN - 2011 MAP #12

Overall Wildfire Risk Map - Inputs and Data Sources

- Risk, Values, Protection Capabilities, and Hazard Layers
- Wildland Urban Interface (Structural Vulnerability)

Sources: Metro RLIS Data, Oregon Dept. Forestry, U.S. Forest Service, Multnomah Co. GIS, Oregon State Fire Marshall



This map is provided for informational purposes only. Information used to develop this map has been obtained from many sources, and is not guaranteed to be accurate. Multnomah County assumes no responsibility for the accuracy of information appearing on this map.

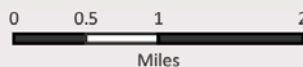


Table A-2.1 RFPD #14 (Corbett) Communities at Risk

Community At Risk	CAR Priority	Defensible Space	Access	Water	Public Lands	Private Lands	Recreators/ Transients	Protection Capabilities	Burning	Preparedness	Communications	Steep Slopes	Description
Multnomah County Rural Fire Protection District #14 (Corbett)													
Trout Creek/Aims Road	High	X	X	X		X		X		X		X	Trout Creek is home to over 50 residences. The community lies at the eastern edge of the Corbett RFPD with extended response times from the main station. The area has heavy fuels loading and intensive forest management activities occur around and within this community. The Aims Community is located along the southern Multnomah County/Clackamas County border. Any response here would likely be coordinated with Sandy Fire. It is surrounded by managed forestlands. Johannesen Road is one way in and out, and there is a pond there for water Groce Road is one way in and out, does not have sufficient water, and has very heavy fuels. Hogg Mill Road has a gate on it, but the access adequate and there is some defensible space.
Toll, Brower& Palmer Mill Roads	High	X	X	X		X		X		X		X	This is a community of about 20 homes. Although there is a draft site on Toll Road, water would need to be transported to Brower and Palmer Mill during a wildfire event. This area has very poor access, with one-way egress on steep, narrow gravel roads. The area is also adjacent to heavy timber harvest.
Howard Road	High	X	X	X		X		X		X		X	This is a larger community of about 20 homes, which sits in a steep canyon. Access is extremely limited with one way in and out. There are steep, long driveways with no signage. Water would need to be transported here to fight fire. The homes are in need of defensible space and it would be beneficial to continue fuels reduction efforts onto adjacent forest lands.
Rickert to O'Regan Roads	High	X	X	X		X		X		X		X	This is a community of about 15 homes that are in need of defensible space. Heavy timber surrounding the community should also be treated to reduce the spread of fire. Access is very poor with steep, gravel one way roads and poor address signage. Water would need to be transported here.
Latourell/Alex Barr Roads	High	X	X	X		X		X		X		X	There about 20 homes in this community. Alex Barr has a steep gravel road and both Latourell and Alex Barr are one way in and out. Water would need to be transported here to support firefighting efforts. Defensible space is needed around homes and continued fuels reduction is needed on the south side of Latourell
Columbia Ave.	High	X	X			X		X		X		X	This is a community of about 6 homes that are in dire need of defensible space as well as continued fuels reduction on adjacent lands. There is a hydrant, so water supply is sufficient. Access is limited to one way in and out.
Thousand Acres	High		X	X	X		X	X	X				Thousand Acres is part of the USFS, who contracts with MCRFPD #14 for fire suppression. The current contract negotiations include adding Emergency Medical Services thru Multnomah County EMS. This area has high fuels comprised of invasive species including Himalayan Blackberry and Scotch Broom. There are many potential ignition sources as it is adjacent to Interstate 84 and the Rail Road, has an off leash dog park that has heavy recreational use, and is a well-known transient camp area. The Columbia Gorge national Scenic Area recently embarked on restoration of native vegetation and eradication of the Himalayan Blackberry, and has used controlled burns to accomplish restoration goals.
Red Elder, Fern Road, Hemlock Roads	Medium	X	X	X		X		X		X		X	This community has about 12 residences, and it is anticipated that only half of those would be receptive to addressing wildfire hazards. Access is limited to steep one-way in and out roads. There is a pond near Red Elder, but it is not accessible by emergency vehicles, so water would need to be transported. This community is most susceptible to potential fire starts from heavy forest management operations surrounding the entire community.

Table A-2.1 RFPD #14 (Corbett) Communities at Risk

Community At Risk	CAR Priority	Defensible Space	Access	Water	Public Lands	Private Lands	Recreators/ Transients	Protection Capabilities	Burning	Outreach	Communications	Steep Slopes	Description
Multnomah County Rural Fire Protection District #14 (Corbett)													
Donahue Road	Medium	X	X	X	X	X		X		X		X	This area represents less than 5 homes, but is rich in community values, as it is the primary watershed providing drinking water to Corbett area residents. As such, important infrastructure is located here including a water reservoir and operation head works. There are heavy fuels in this area as well as commercial forest management activities (Longview Fiber and Frank Timber).
Moffet Road	Medium	X	X	X		X		X		X			This is a small community of about 5 homes. The access in this area is 1-way, but it isn't steep and can be access fairly easily. There are heavy fuels in the area and no water available for wildfire fighting.
Deverell Road	Medium	X	X	X		X		X		X		X	Deverell is a small community that has s number of long, steep, one-way driveways with no signage. Heavy fuels and forest management activities surround this community. There a few homes with no defensible space and there is no water here.
Mannthey Road	Medium		X	X	X	X		X		X		X	Mannthey Road is a community of about 10 homes that have fairly good defensible space. Fuels reduction is needed around the community to really protect the structures from a fire spreading from forest lands. There is no water here, and access is poor with only one way in and one way out.
Haines/Thompson Mill Roads	Medium	X	X			X		X		X	X		This area has only about 6 homes, but also includes the Antec commercial laboratory, which may use hazardous materials. There is adequate water to fight fire here, but access is limited to one way in and out. The community would benefit from defensible space as well as fuels treatment in the surrounding forest lands. Communication with the laboratory would assist in preparing for a potential hazardous material event.
Bridal Veil	Medium		X	X	X	X	X	X		X		X	This is a small community that has a large number of recreationists visiting throughout the year, so there is an opportunity for community outreach. There is no water available. There is good defensible space around the structures, but heavy timber surrounding the community. Access is limited to one way in and out.
Alder Meadows Road	Medium	X	X	X	X	X		X		X			This is a community of about 6 homes that are in need of defensible space as well as continued fuels reduction on adjacent lands. Water would need to be transported here. Access is limited to one way in and out.
Trout Creek Camp	Low	X						X		X			Trout Creek Camp is a recreation area that houses students during the summer months. The area has adequate water and good access, but would benefit from defensible space and community outreach. There is a great opportunity to partner with the Camp to reduce fuels and educate campers.
North Oxbow	Low	X	X		X	X	X	X		X		X	This small community of about 5 homes is located at the bottom of a slope. The access is steep, gravel and is only one way in and out. Homes would benefit from defensible space and the surrounding forest needs fuels management.
Camp Angeles	Low	X			X		X	X		X			This recreational camp houses many visitors during the summer months, creating an opportunity for outreach and education. The access is only one way in and out, but it is not too bad for emergency vehicle to access. There is a dry hydrant at the pond. Defensible space is needed and fuels treatments should be completed on adjacent Metro-owned land.
Gordon Creek/Buck Creek	Low	X	X	X	X	X		X		X		X	This is a small community of only two homes. These homes are surrounded by dense vegetation and would benefit from defensible space treatments. Surrounding forest lands would benefit from fuels management as well. Access is very poor here, with only one steep road going in and out.

Table A-2.2 RFPD #14 (Corbett) Action Plan

Action Item	Timeframe	Partners	CAR
Multnomah County RFPD #14 (Corbett) Overall Action Plan			
Work with CWPP partners to engage the Columbia Gorge Commission in discussions about the risk of wildfire, and the benefits of fire-resistant building materials and defensible space.	Short Term	Cascade Locks Fire, ODF	Mult. Co. RFPD #14
Inventory existing water resources and identify alternative water sources to support potential wildfire fighting efforts. GPS all draft sites.	Short Term	ODF	Mult. Co. RFPD #15
Work with ODF to provide wildland fire training to all volunteer fire fighters.	Ongoing	ODF	Mult. Co. RFPD #16
Work with Multnomah County to produce a check list for inspection that must be completed by MCRFPD #14 before an occupancy permit is issued.	Short Term	Multnomah County Building Dept.	Mult. Co. RFPD #17
Track Mutual Aid agreements and/or contracted services contracts with other jurisdictions including wildland agencies to ensure agreements are up to date.	Ongoing	Fire Defense Board, ODF, USFS	Mult. Co. RFPD #18
Multnomah County RFPD #14 (Corbett) Local Communities At Risk Action Plan			
Conduct a Community Meeting to educate community on defensible space, and measures that can be taken to reduce structural ignitability. Solicit feedback on wildfire prevention projects the community would support.	Spring 2011/ Ongoing	ODF, CWPP Outreach Subcommittee	Trout Creek, Toll, Brower & Palmer Mill Roads, Columbia Ave, Latourell/Alex Barr
Develop a local wildfire prevention campaign to promote defensible space and reduce structural ignitability within the Home Ignition Zone	Spring 2011/Ongoing	ODF, CWPP Outreach Subcommittee	Roads
Obtain structural ignitability intelligence by conducting structural triage assessment data collection (including GPS points) for homes in strategic planning areas.	Short Term	ODF, Wildfire Technical Committee	All
Develop a community-driven pre-disaster plan including evacuation routes, telephone call down trees, and other strategies for strengthening community response.	Short Term	MCEM	All
Map all roads, bridges and driveways and prioritize homes that have dead-ends, and cannot support emergency service vehicles (grade, length, vegetation, turn-arounds) for defensible space and fuels reduction projects.	Long Term	Multnomah County	All
Implement road addressing (including length of driveways) and other signage for emergency response.	Short Term	ODF	All
Partner with managers of forested areas to reduce hazardous fuels in natural areas surrounding communities at risk.	Ongoing	Metro, Longview, USFS, Private forest landowners	All
Seek grant funding to support fuels reduction and creation of defensible space around homes. Consider developing a cost-share program to support these activities.	Ongoing	ODF, Wildfire Technical Committee	All
Identify opportunities for community debris disposal collection sites that recycle or compost vegetative material vs. burning.	Ongoing	ODF, Wildfire Technical Committee	All
Meet with Antec to determine chemical usage to assess potential for a hazardous material spill/ignition.	Short Term	MCRFPD #14, Antec	All
Use controlled burns as a training tool for potential wildland response.	Ongoing	USFS, ODF	Haines/Thompson Mill Roads
Continue to support the Columbia River Gorge National Scenic Area in restoration efforts by accessing additional grant funds made available through the CWPP.	Short Term	Columbia River Gorge National Scenic Area	Thousand Acres
Work with Sheriff's Office to patrol the area to reduce transient camps.	Ongoing	Multnomah County Sheriff's Office	Thousand Acres
Increase public awareness of wildfire hazards by posting information on existing placards in recreational areas.	Short Term	USFS, ODF	Thousand Acres