

SUN Coordinating Council Retreat

August 9, 2017



Small Group 1

Each person takes 1-2 minutes to share:

When you think about the work you are doing today, who would you thank for inspiring you to pursue this path?

What was it about that person?



Small Group 2

Each person takes 1-2 minutes to share:

How do you keep going and stay grounded when the work gets tough?

What do you draw on?

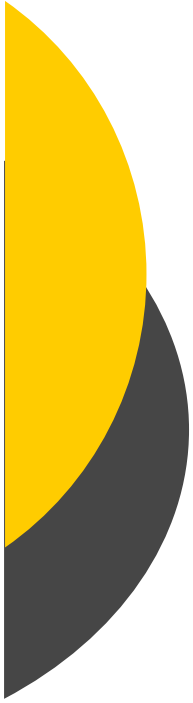
Theory of Change

We will improve the wellbeing of our entire community by collaborating and integrating strategies and services that have been shown to improve educational and economic outcomes for people of color and those living in poverty



SUN SERVICE SYSTEM

Building a Brighter Future for Kids and their Families



Council Role

- Advise sponsors on policy areas/financial allocation
- Engage in strategic planning
- Develop supportive policies
- Align programs
- Engage the community
- Support implementation of Equity & Empowerment Lens
- Champion the system in a collective way
- Review dashboards and evaluation. Support continuous improvement efforts linked to results.
- Address systemic barriers and respond to emergent issues and trends



Data and Results Advisory Group

Advising YFS Evaluators and Staff as they:

- ▶ Analyze FY17 Service and Outcome Data – disaggregated by race/ethnicity
- ▶ Review and refine indicators and outcomes for SUN core programs
 - Including SUN Youth Advocacy, SUN Community Schools, Parent Child Development Services and Multnomah Stability Initiative
 - New study on community schools = evidence based strategy
- ▶ Systematically look at individual programs to understand impact
- ▶ Provide additional data to support Council work plan

Youth Advisory Groups

Possible Structures for Youth Voice



Cross School/Agency
Youth Advisory Committees

Coordinating
Council Youth
Seats with
Mentorship

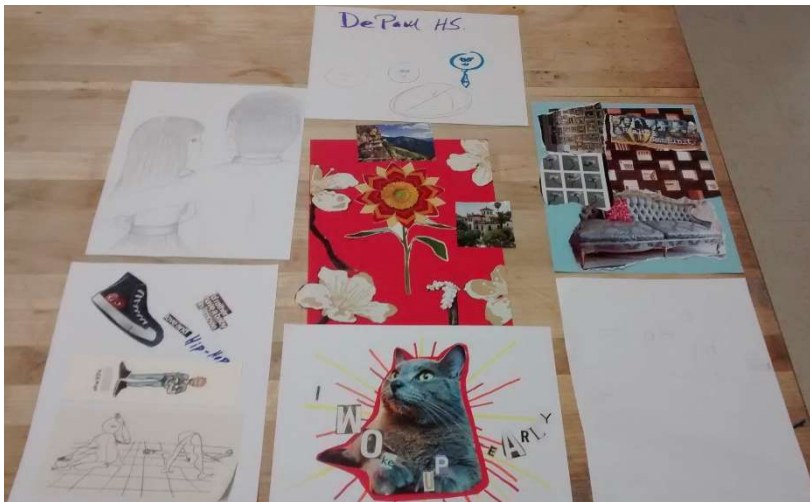
School/Agency Based
Youth Work Groups

Youth Advisory Groups

Gresham Y.O.U.N.G.



Franklin V.O.I.C.E.



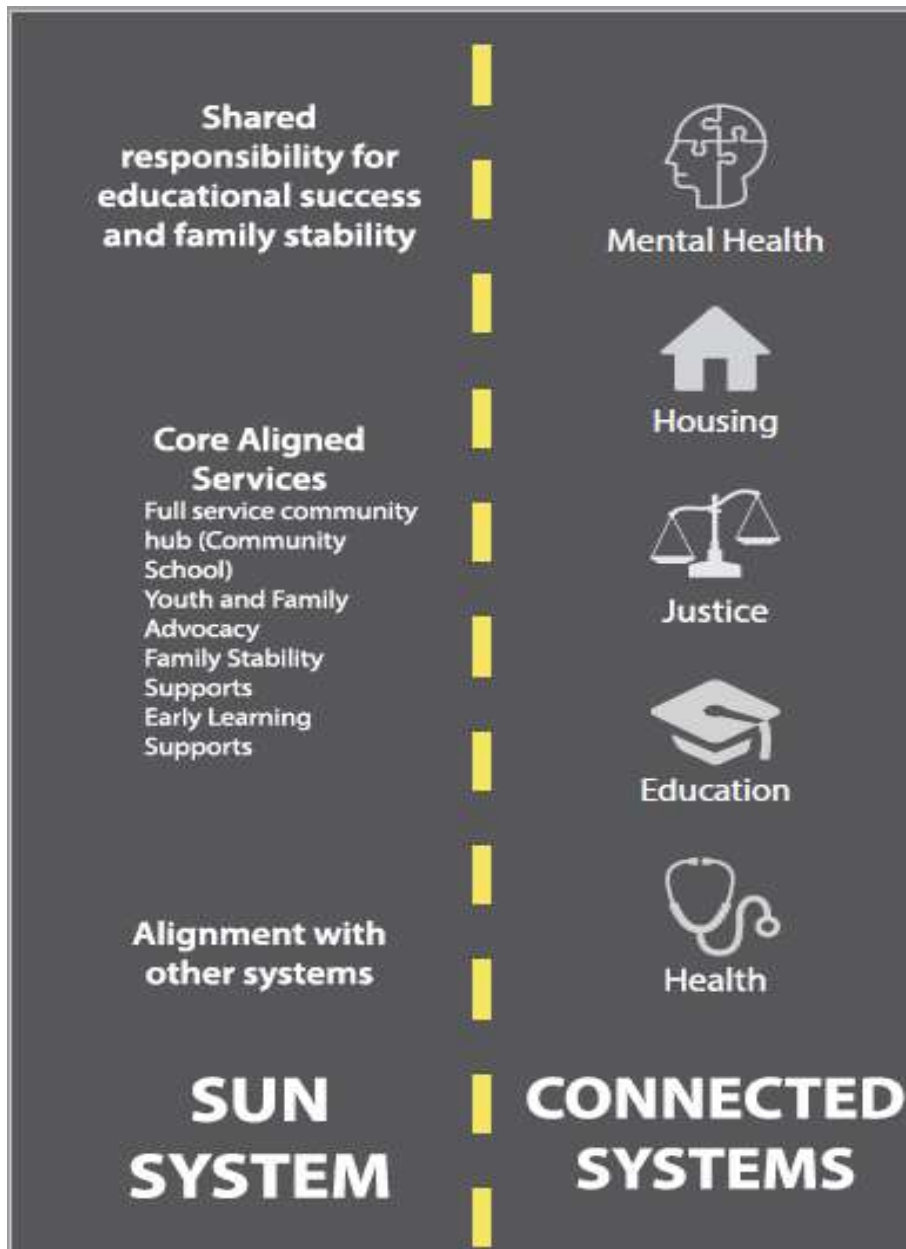
SUN SERVICE SYSTEM

Building a Brighter Future for Kids and their Families



Scan of Our Environment

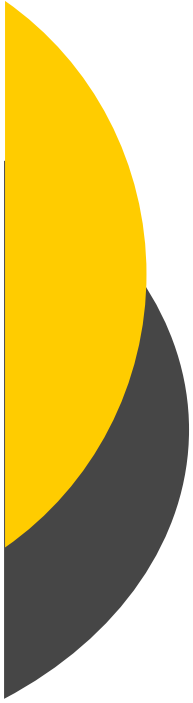
1. On your own, consider the two questions and write your thoughts on the worksheet
2. In a small group, discuss your answers and create big stickies with your shared ideas
Opportunities on orange, Vulnerabilities/Challenges on pink
3. Join with another group, share your stickies and distill into a single set of stickies.
Write new stickies as necessary to capture combined ideas.



Our Lane

SUN SERVICE SYSTEM

Building a Brighter Future for Kids and their Families



Buckets

System Performance and Continuous Improvement

Pink

Building and Sustaining the Partnership and Champions

Yellow

Resources and Sustainability

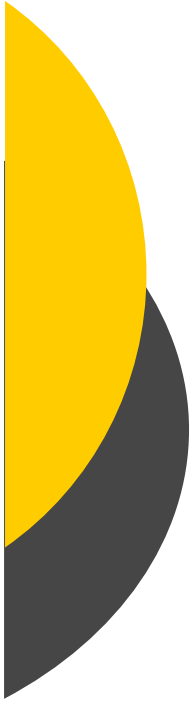
Green

System Alignment

Blue

Outreach and Engagement

Orange



Buckets

System Performance and Continuous Improvement

Pink

Building and Sustaining the Partnership and Champions

Yellow

Resources and Sustainability

Green

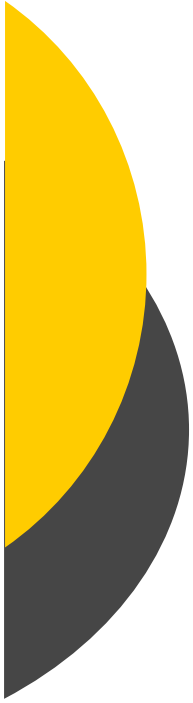
System Alignment

Blue

Outreach and Engagement

Orange

- Ideas outside these buckets on light blue post-its



Council Role

- Advise sponsors on policy areas/financial allocation
- Engage in strategic planning
- Develop supportive policies
- Align programs
- Engage the community
- Support implementation of Equity & Empowerment Lens
- Champion the system in a collective way
- Review dashboards and evaluation. Support continuous improvement efforts linked to results.
- Address systemic barriers and respond to emergent issues and trends