



2023 Catastrophic Mass Care Series

Event #1: Seminar

Lisa Corbly & Robert Quinn
Emergency Management Team

Discussion Topics

A. 2023 Catastrophic Mass Care Exercise Series Overview | R. Quinn

B. Catastrophic Mass Shelter Model | L. Corbly

C. Group Discussion & Questions | All



A. 2023 Catastrophic Mass Care Exercise Series



A. 2023 Catastrophic Mass Care Exercise Series

March 3

Seminar

Model
Awareness

Duration: 1.5 Hours - Virtual

Objectives

1. **Educate Multnomah County Partners** on the existing local, collaborative, Mass Care Model

Participants: Larger group the better for awareness building & discussion



A. 2023 Catastrophic Mass Care Exercise Series

March 7

Regional
Workshop #1

Identify
Current
Capabilities

Duration: 4 Hours - Virtual

Objectives (All related to feeding, hydration, & sheltering)

1. Assess and develop jurisdictional capabilities and resource needs.
2. Comprehend and identify gaps in support to people with access and functional needs
3. Understand response partners and stakeholder's capabilities.
4. Comprehend and identify gaps in equity and culturally competent disaster response planning.

Participants: Limited to 20 MultCo participants - collaboration w/ DCHS.



A. 2023 Catastrophic Mass Care Exercise Series

May 2

Regional
Workshop #2

Scenario it!
Validate
Workshop

Duration: 8 Hours - In-Person - Washington County

Objectives (All related to feeding, hydration, & sheltering)

1. Assess and develop jurisdictional capabilities and resource needs.
2. Comprehend and identify gaps in support to people with access and functional needs
3. Understand response partners and stakeholder's capabilities.
4. Comprehend and identify gaps in equity and culturally competent disaster response planning.

Participants: Limited to 20 MultCo participants - assessing from Workshop #1



A. 2023 Catastrophic Mass Care Exercise Series

June 13

Cascadia '23
Mass Care
Day

Develop
Capabilities

Duration: 8 Hours - In-Person - TBD in Multnomah County

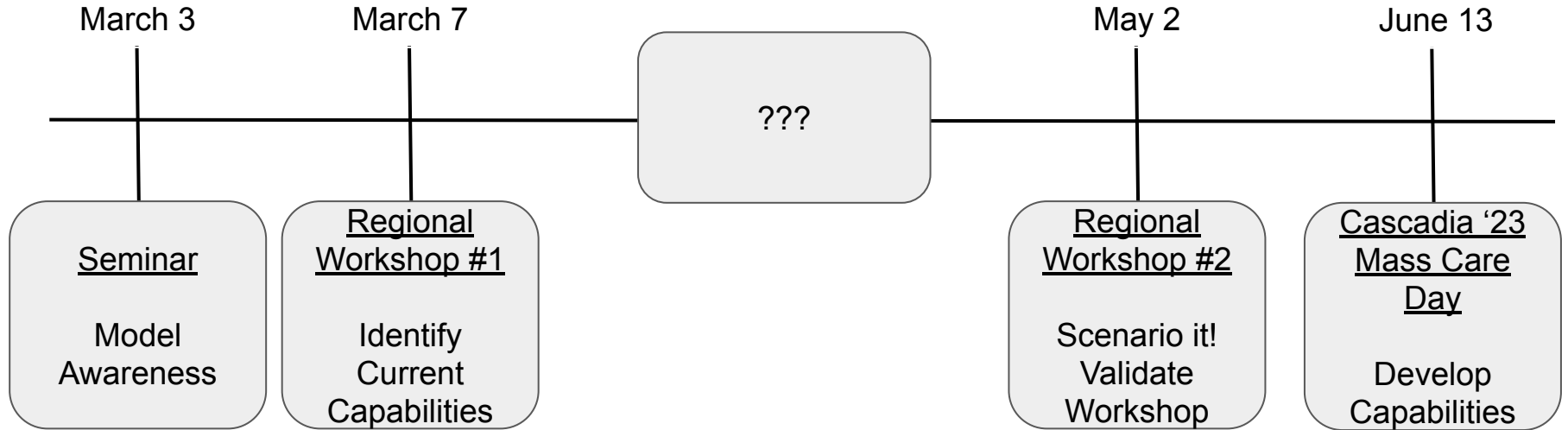
Objectives

1. TBD - But, build off Regional Workshops to further develop elements of Catastrophic Mass Care
 - a. Ex. Workshop to develop catastrophic shelter site set-up and operations guidance; or,
 - b. Tabletop to validate content built during workshop.

Participants: Larger group the better for capability building & discussion



A. 2023 Catastrophic Mass Care Exercise Series

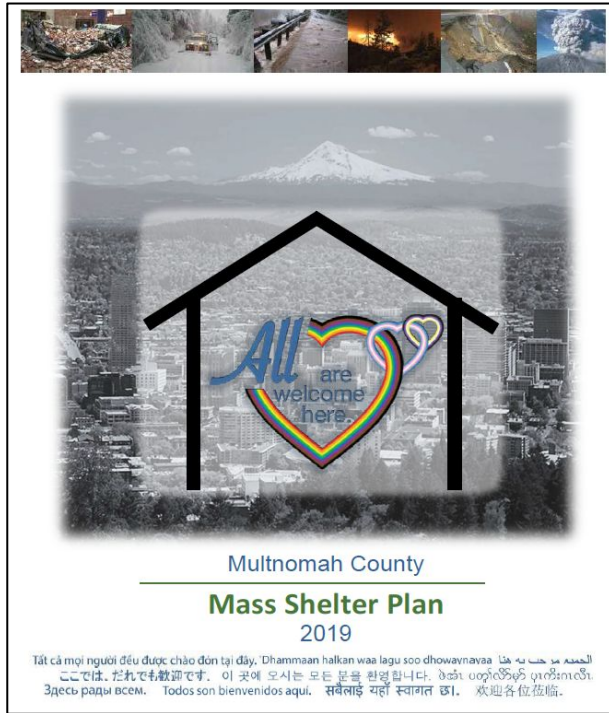


Series Objectives

1. Continue to build awareness and capabilities for Catastrophic Mass Care, and
2. Develop Long-Term Strategic Work Plan for topic (From Event AAR-IP)



B. Catastrophic Mass Shelter Model | Recording Starting



Lisa Corbly | MCEM





Mass Shelter

Multnomah County

Lisa Corbly, MCEM
March 3, 2023



Agenda

- Mass shelter planning
- All-hazards shelter capabilities
- Associated plans
- Putting it all together

Mass Shelter Planning

2015-2018



Multnomah County

Mass Shelter Plan
2019

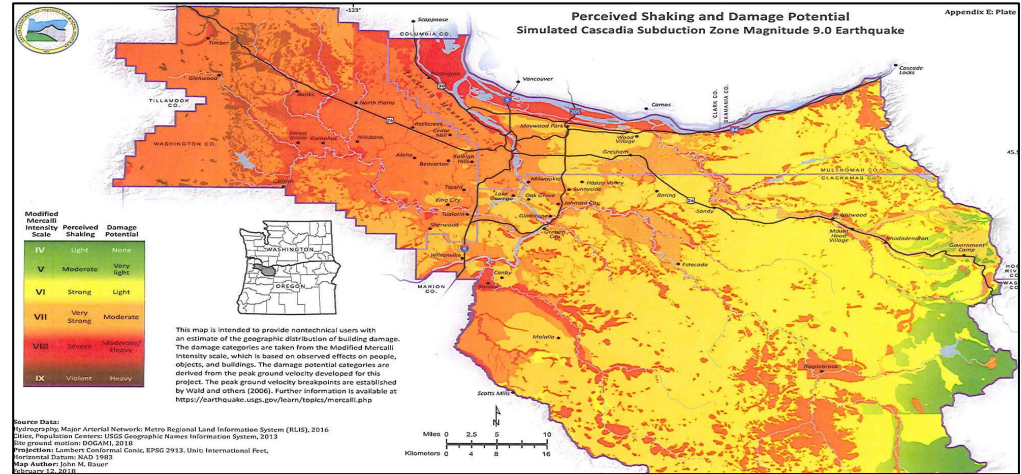
tại đây. "Dhammaan halkan waa lagu soo dhaw
국에 오시는 모든 분을 환영 합니다"
agui. सबैलाई गर्नु

CSZ Earthquake: Impact to Multnomah County*

- 2,541 injured in Multnomah County
- Evacuations
- 2,000 hospital patients
- 6,700 nursing home patients
- 3,800,000 cubic yards of debris to move
- 230,000 people to feed
- 140,000 pets to feed
- **88,000 people to shelter (13,540 shelter staff**)**
- 91,000 damaged residential structures

* Cascadia Subduction Zone (CSZ) Catastrophic Earthquake and Tsunami Response Plan: I-5 corridor results were multiplied by Multnomah County population (28%)

** Using the Red Cross staffing model @ 1.3 staff per 10 residents



Planning Team

211 Info

American Association of Retired Persons

American Red Cross: Cascade Region

Asian Health and Services Center

Cascadia Behavioral Health

Central City Concern

Church of the Brethren

Citizen volunteers

City/County Joint Office of Homeless Services

Clackamas County Emergency Management

Columbia County Emergency Management

Corbett Community

FEMA Disability Office

Gresham Emergency Management

Hands On Greater Portland

Immigrant and Refugee Community Organization

Interfaith Community

MultCo Amateur Radio Emergency Services

MultCo Dept. of Community Services:
Engineering

MultCo Dept. of Community Services:
Animal Services

MultCo Dept. of County Assets: IT

MultCo Dept. of County Human Services

MultCo Dept. of County Human Services:
Domestic Violence

MultCo Dept. of County Management,
Central Human Resources: Talent
Development

MultCo Health Dept.

MultCo Office of Diversity and Equity

MultCo Sheriff's Office

Nehalem Bay Emergency Management
Division

Operation BBQ Relief (OBR)

Oregon Department of Human Services

Oregon Health Authority

Oregon Food Bank

Oregon Office on Disability and Health

Outside In

Portland Bureau of Emergency Management

Portland Office of Neighborhood Involvement:
Disability Program

Portland Parks and Recreation

Portland Police Bureau

Portland VOZ

Regional Disaster Preparedness Organization
(RDPO)

RDPO Law Enforcement Work Group

Ride Connection

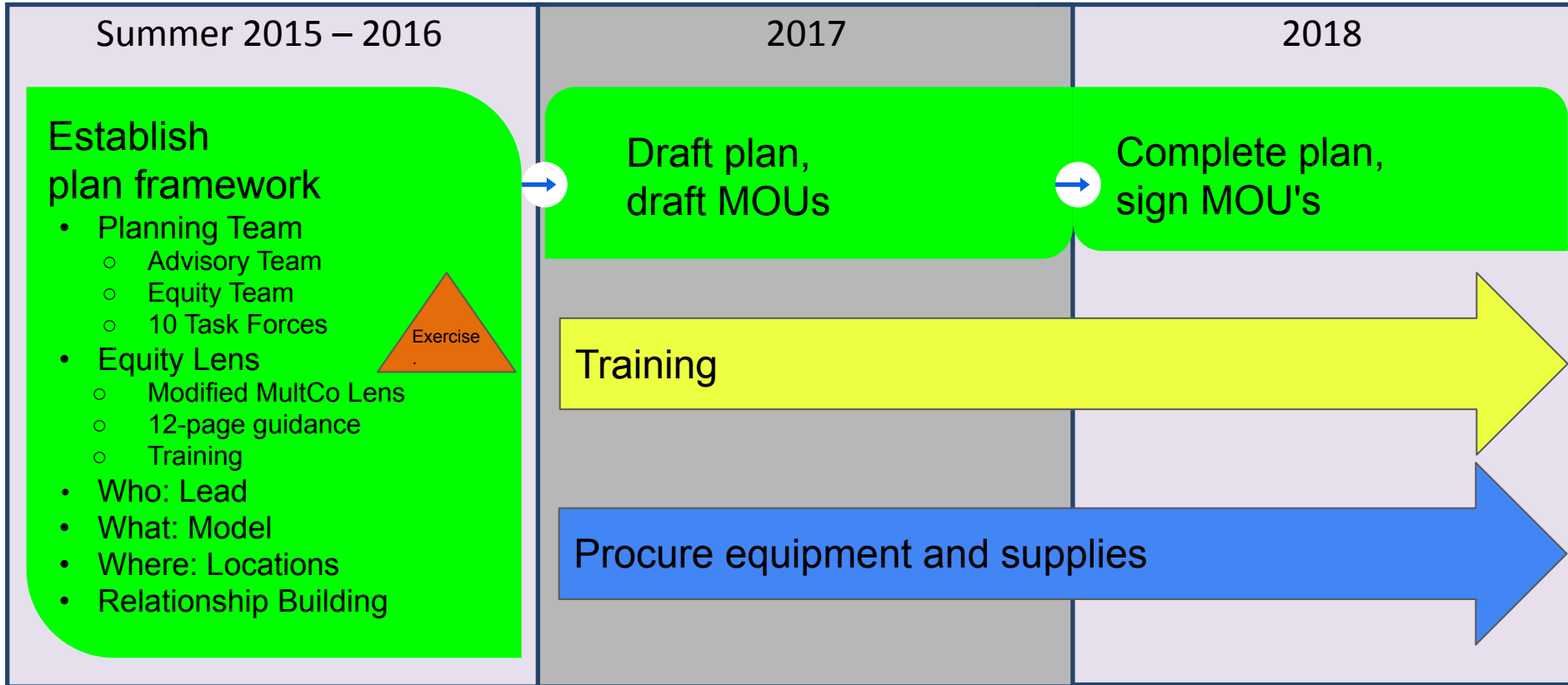
Salvation Army

Sauvie Island Community

Urban League

and potential mass shelter property owners

Planning process













Out of scope: How (standard operating procedures, checklists)



Model: Who

Lead

Dept. County Human Services (DCHS)

 Aging & Disability	 Food Assistance in	 Bienestar de la Familia	 Energy Services
 Intellectual & Developmental Disabilities	 Rent, Housing & Shelter	 Domestic & Sexual Violence	 Assertive Engagement
 SUN Service System	 Veterans' Services		

Partners

Other County departments (health, animal services, libraries, facilities, etc.)

+

Red Cross
cities
community partners
shelter sites

Model: What Shelter Villages




Model: What Shelter Villages

Services for overnight guests

- Registration
- Dormitory
- Private restricted-access space

General services

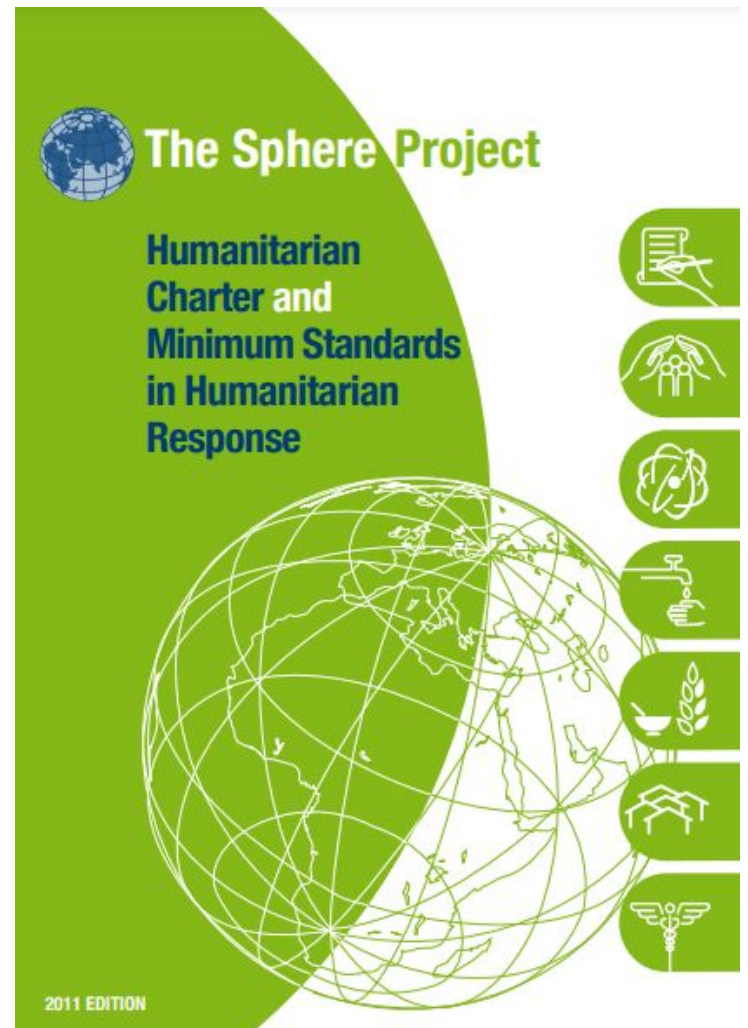
- Reception
- Reunification
- Food and water
- Human services
- Social and wellness activities
- Children's services
- Health and medical services
- Security
- Information area
- Animal services
- Volunteer management
- Donations

- 
- Description
 - Background check
 - Guiding principles
 - Roles/Responsibilities

Model: What Shelter Villages

Outdoor spaces

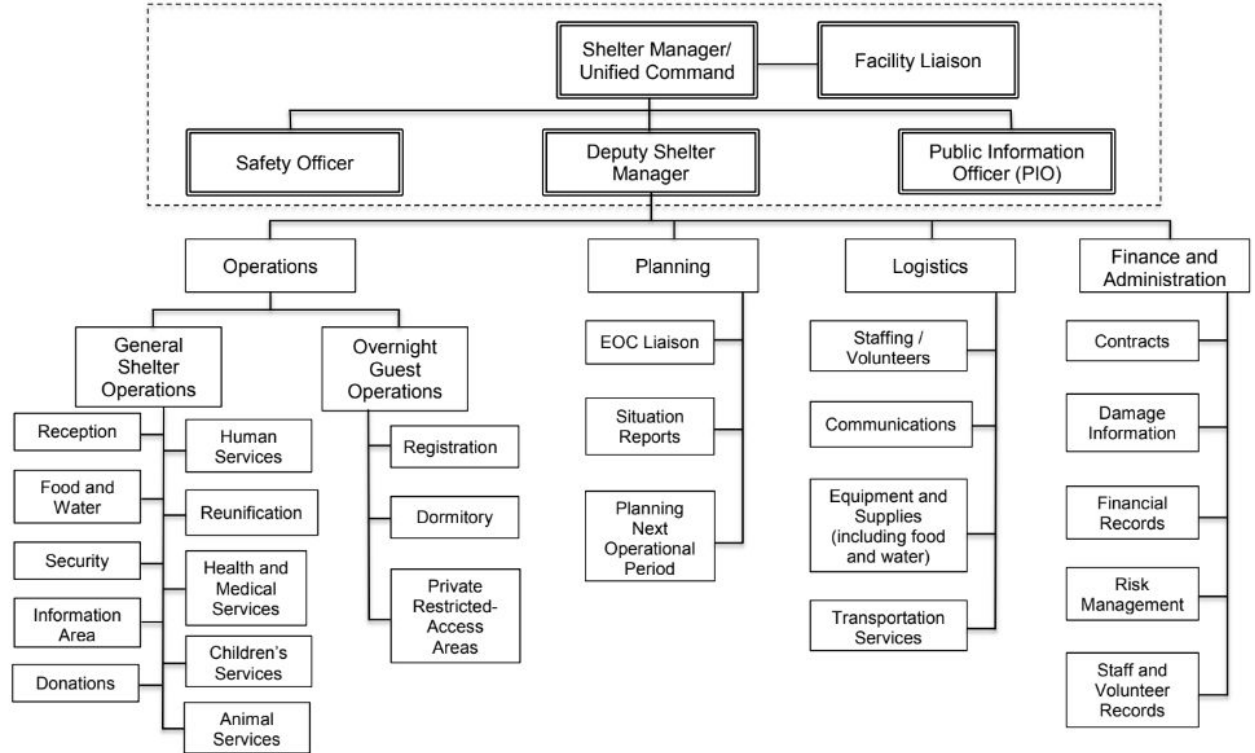
- Guidance
- Priority services for indoor areas
- Priority services for outdoor areas



Model: What Shelter Villages

Staffing

- Organizational chart



Model: What Shelter Villages

Staffing

- Staffing guide

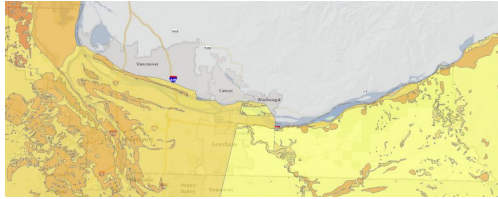
Table 3: Shelter Village Staffing Guide¹

NOTES:

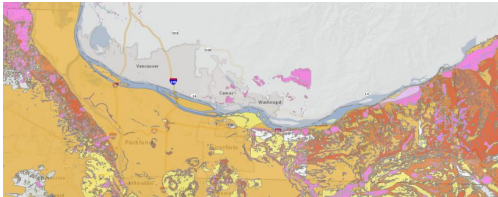
- Based on 1,000 residents
 - Staffing is *per shift*
- Staffing levels and scaling factors are guidelines, staffing at each shelter is situation dependent
- Staffing is for 1 shift, during daytime hours of shelter operation
- Night shift requires supervisory and worker staffing based on activity level and situation

Functional Area	Manager	Supervisor	Workers	Scaling factor per population	Background check required?	Notes
Services for Overnight Guests						
Registration	1	1	6	1:165, minimum	NO	Workers include leads, typically 1 per 9 workers.
Dormitory	1	1	10	1:100, minimum	YES	Workers include leads, typically 1 per 9 workers.
Private Restricted-Access Areas	1	1	10	1:100, minimum	YES	Workers include leads, typically 1 per 9 workers.
General Shelter Services						
Reception		1	3	1:500	NO	Workers include leads, typically 1 per 9 workers.
Food and Water	1	1	9	1:110, minimum	NO	Staffing is for food serving only; food preparation is not included. Workers include leads, typically 1 per 9 workers.
Reunification	1	1	3	1:500, minimum	YES	Workers include leads, typically 1 per 9 workers.

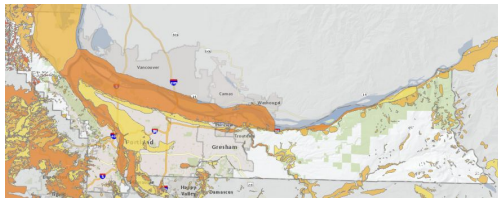
Model: Where Vulnerability Analysis



9.0 CSZ Earthquake shake map



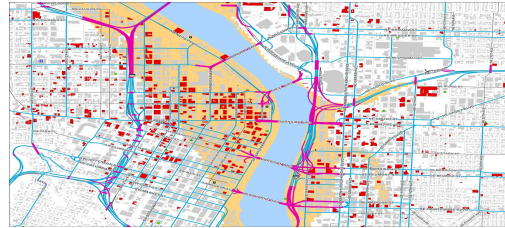
Landslide



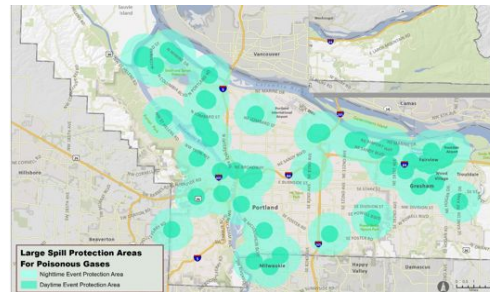
Liquefaction



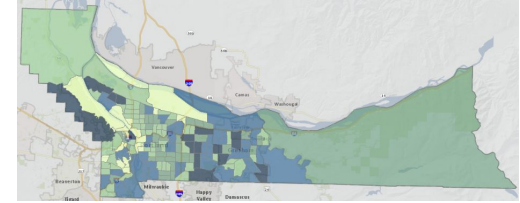
Special Flood Hazard Area



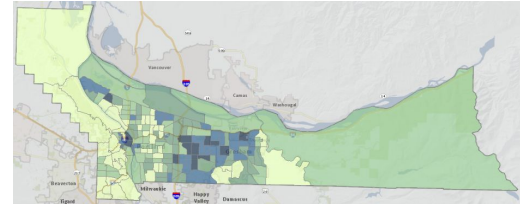
Hazardous materials



Unreinforced Masonry (URM)



Total Population



Social Vulnerability Index

- Youth
- Elderly
- Unemployment
- Renter Occupied Housing
- Poverty
- Language Not English
- SNAP benefits
- Mental Health Served by MultCo
- Cascadia Behavioral Health Beds
- Medicaid and WIC received
- Disability
- Home Forward Units
- Living Alone
- Single Parents

Model: Where

Property characteristics

- Indoor space
- Outdoor space
- Construction
- Contents
- ADA compliant
- Backup power
- Toilets
- Showers
- Kitchen
- Refrigeration
- Pet friendly



Model: Where

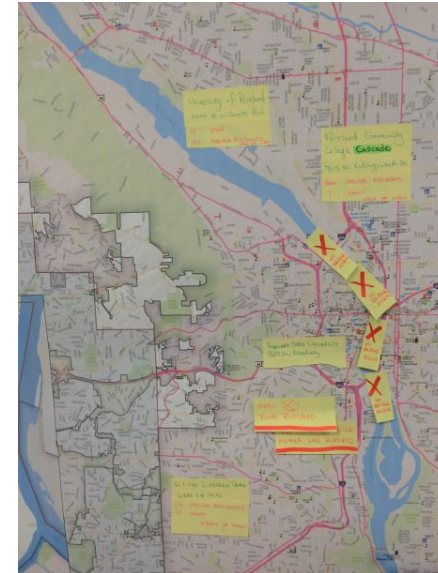
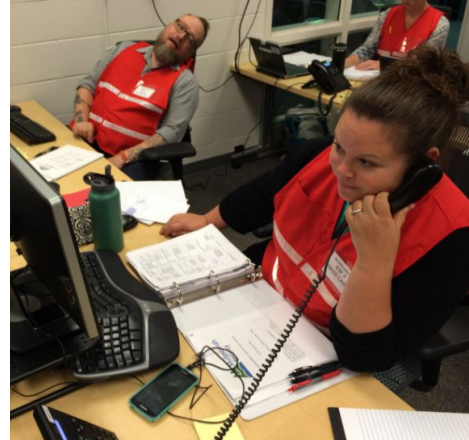
For more information on specific locations, please reach out to the County EM Duty Officer (em.dutyofficer@multco.us)

Exercise



Mass Care Objective

Demonstrate the ability to coordinate and deliver life-sustaining services to disaster survivors with a focus on hydration, feeding, emergency sheltering, evacuations, and donations and volunteer management.



Training

- Mass shelter manager
- General shelter staff
- 2020 goal
 - 200 County staff
 - 1,000 County staff identified for Just In Time training



Supplies



Specialized dormitory
equipment

\$71.3 K State Homeland
Security Program (SHSP) grant

2020 goal: 1% cots and blankets (880)
Focus: people with access and functional needs



5 Water
filtration
systems

\$76.8 K SHSP
grant



5 shipping
containers and
mass care
supplies

\$70K SHSP grant

Building all-hazard shelter capabilities



Disaster Resource Center (DRC)

- Small to medium scale events
- Types
 - Information and resources
 - Daytime shelter
 - Overnight shelter
- Essential Services
 - Food and water
 - Safety
 - Translation and Interpretation services
 - Pet services
 - Disaster behavioral health services
 - Assessment and referral services
 - Accessible information services
- Additional services
 - Based on availability and guest needs, may include but are not limited to: clothing/personal care services, dormitory services, medical services, housing assistance



**DISASTER
RESOURCE
CENTER**

Information & Support

Centro de Recursos de Desastres
инфо(рмационный) центр оказания
помощи при стихийных бедствиях

Trung tâm Tài nguyên thiên tai
Xarunta Waxtarka Musiibada
Ресурсний центр катастроф
災害資源中心
災害情報センター
مرکز موارد الكوارث

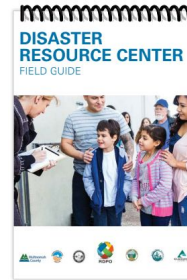
 Multnomah
County

Training: <https://www.multco.us/dchs/disaster-resource-centers>

2020 goal: 200 trained; 1000 JIT

2023: 500+ county staff trained plus city/state staff and partner orgs
All county staff invited to staff (JIT)

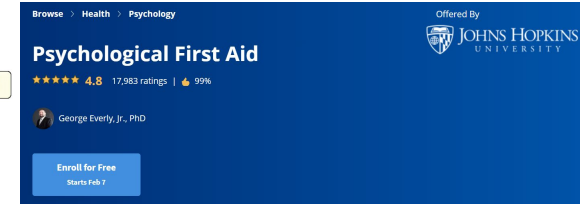
Trainings developed by MCEM + 130 partners
Urban Area Security Initiative (UASI) grants (2)



8 hr DRC Coordinator training

4 hr general staff training

External trainings



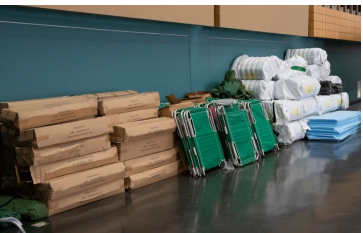
Position descriptions developed by MCEM

- [General Staff Position Description \(91.09 KB\)](#)
- [Person In Charge \(PIC\) Position Description \(94.35 KB\)](#)
- [General Staff - Feeding Position Description \(92.14 KB\)](#)
- [General Staff - Site Setup Position Description \(75.72 KB\)](#)
- [General Staff - Demobilization Position Description \(77.13 KB\)](#)
- [Behavioral Health Staff Position Description \(89.21 KB\)](#)

Supplies and Equipment

2020 goal: 880 cots and blankets

2023: 2171 cots/mats and 5220 blankets



- Ready to support 800 ppl at any time
- Mobile staged trailers (5)
- PODs, storage at some pre-identified shelter facilities (seasonal)
- 5 shipping containers
- 5 water filtration systems
- Universal signage, 14 languages, UASI grant
- Cots: standard (290), specialized (510)
- Transfer equipment (hoyer lifts, gait belts, transfer boards)
- Mats (1371)
- Blankets (5220)
- Cleaning supplies
- Administrative supplies
- Food and beverages
- First Aid supplies
- Medical supplies
- Toiletries
- PPE and hand hygiene supplies
- Technology (cell phones, hot spots)
- Winter and summer supplies



SPIRE 2019 grant

- Mass casualty trailer, 20 beds
 - tents (2)
 - generator
 - HVAC (2)

Logistics Team and Warehouse, [American Rescue Plan Act funding](#)



10 staff



16K sq ft



Associated Plans

Reunification Plan

- Family Reunification Center
 - Facility thresholds and specifications
 - Equipment list
 - Organizational chart
 - Staffing model
- Call center
- Website
- Information clearing house



Juvenile Detention Home Catastrophic Emergency Planning



- US Dept. of Justice, Juvenile Justice Emergency Planning Demonstration Program grant
- Plan and template
 - Emergency sheltering
 - Alternate facilities
 - Emergency early release (decision making diagram, modified standing order)
 - Emergency evacuation
 - Life safety services
 - Staff support
 - Communication
- Exercise, Training
- Emergency supplies (Medical supplies, medicine, radios, lighting, generators, food, water filtration, emergency tents, dormitory)

Volunteer Management Plan

- SHSP grant
- Process and structure
- Recruitment
 - Internal
 - External
- Roles and responsibilities



Children and Youth in Disasters Guidance



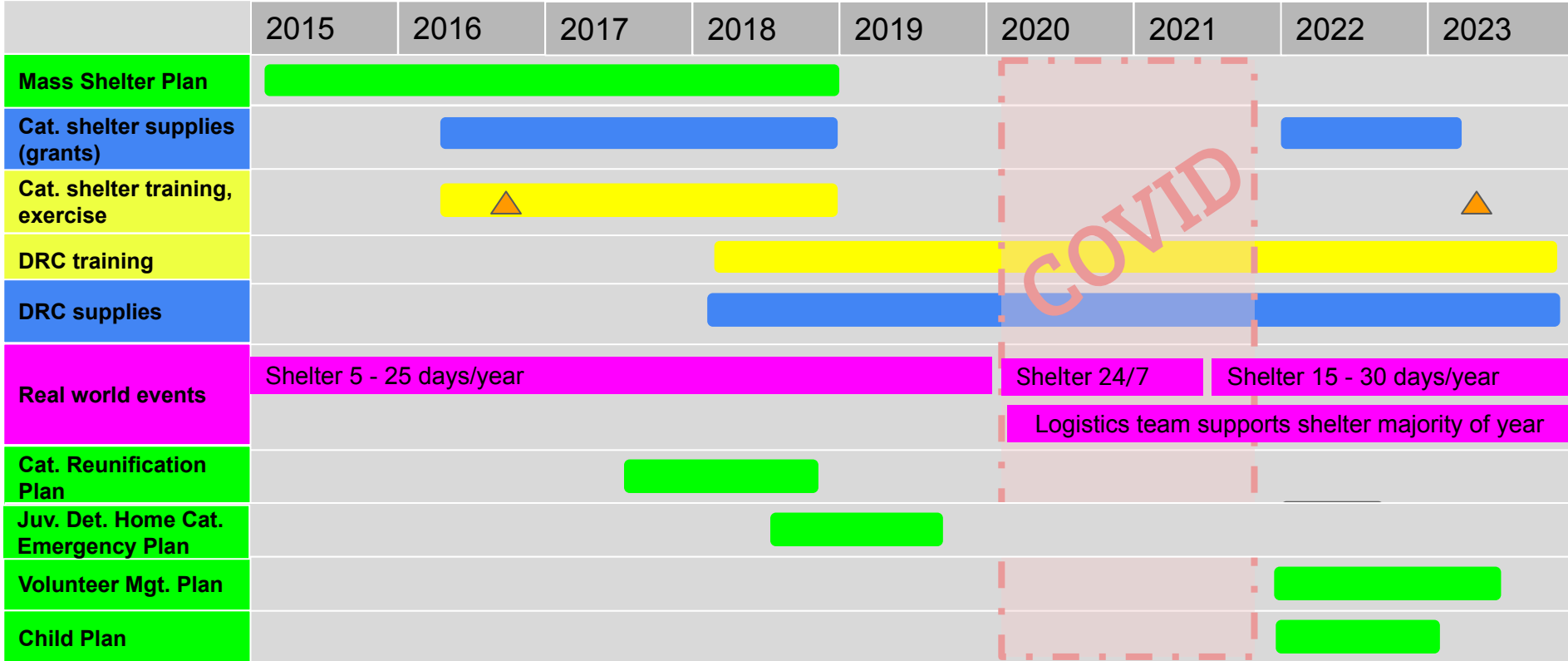
- SHSP grant
- Critical disaster services
- Guidance/best practices
- Existing resources

Putting it all
together





Building Mass Shelter Capabilities



Real world events: model in action

- Jan-Feb 2023
 - 8 nights sheltering
 - Logs FT supporting shelter
- 250 people worked a recent small event
- 613 shifts supported recent weather event
- 2-day/6-site event with overnight shelter only (no daytime shelter)
 - 4 trailers
 - 1 POD
 - 97 additional pallets (sleeping equipment and supplies, food, water, pet supplies, etc)



Questions?



Todos son bienvenidos aquí. Здесь рады всем. 欢迎各位莅临. Tất cả mọi người đều được chào đón tại đây. الجميع مرحب به هنا.

جميع مرحب به هنا. All are welcomed here. 这里是，だれでも歓迎です. 欢迎各位莅临. Իմացումը սոցիալական բազմակողմանի է. Զբոսն ենք անում բոլորին. 欢迎大家莅临.

이 곳에 오시는 모든 분을 환영합니다. सबैलाई यहाँ स्वागत छ।

Lisa Corbly lisa.corbly@multco.us 503.282.6521

C. Group Discussion & Questions

Perspectives &
Questions on **Current
Model**

Questions &
Clarification for **Mass
Care Series**

