

Multnomah County Intellectual & Developmental Disabilities Digital Catalog



Developmental Disabilities Services Division



Table of Contents

Directors Statement	4
ALSO	5
Amie's Community Care	6
Alternative Services Inc. (ASI)	7
BrigaCare	8
Central City Concern	9
Central City Concern - BEST Team	10
Community Pathways	11
Compass Career Solutions	12
Dungarvin Oregon, LLC	13
EASTCO Diversified Services, Inc.	14
Employment Solutions - UCP Oregon	15
Exceed Enterprises	16
FACT Oregon - English	17
FACT Oregon - Spanish	18
Good 2 Go Oregon	19
HDE HomeCare	20
HIRE NW	20
Oregon Family to Family Health Information Center	22

Pacific Opportunities	23
Rainbow Adult Living	24
Residential Facilities Ombudsman Program	25
Ride Connection	25
Ride Connection- Travel Training Program	27
RISE Services, Inc	28
The Arc of Portland Metro	29
Trellis	29
Visions LLC	31
Volunteers of America	32
Westside Community Focus	33
Digital Catalog - Agencies	34

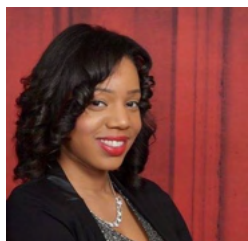


Directors Statement

Dear Reader,

As another year draws to a close, most of you will be in the midst of preparations for this festive season. This is a very special time of the year, as it gives many of us time to enjoy the company of family and friends that is all too often missing for the rest of the year.

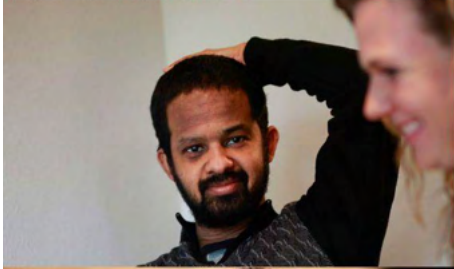
2021, without a doubt, has been one of the most dynamic years for us all. It has revealed by far the highest amount of intentional efforts to maintain connection and services that were vital to keeping each other healthy and safe. While keeping with the spirit of this joyous time, I would like to take this opportunity to thank the many community partners who have responded to our request to share information about their programs in our quarterly catalog. I would also like to thank our internal Intellectual and Developmental Disabilities Services Division staff; who's tremendous efforts day in and out ensure that we are able to continue to share important information about services in the community but also support access to these services. Many of us do not see all the demands placed on our staff, but their work is greatly appreciated. To the personal support workers, residential providers, employment providers, school teachers and family members who show up every day with dedication and love to support those enrolled in Intellectual and Developmental Disability services, we THANK YOU!



Alexis Alberti

Alexis Alberti, Division Director
Multnomah County Intellectual and Developmental Disabilities Services

ALSO



Together, we provide a full range of support and services to children and adults in their homes, workplaces, and community.

Together, we ensure all people with disabilities have access to the resources they need to live full lives.

Together, we help people transition through the school years, to adulthood, through aging in place.

Together, we believe each step presents a set of opportunities to advocate for choice, involvement, independence, and self-determination.

Let's Work Together

Portland Metro
info@alsoweb.org
(503) 489-6565

Central Oregon
central.oregon@alsoweb.org
(541) 410-0317

www.alsoweb.org

Amie's Community Care



Our Mission

We come alongside our customers to grow and develop their independence by providing direct support based on their individual needs, both in their homes and communities.

Our Services

Attendant Care

We provide individualized one-on-one supports to help customers achieve their goals

Employment Services

An individualized approach to assisting customers find and obtain a job that they love

Day Support Activities

Assisting clients to achieve their goals of peer socialization and increase communication skills

Job Coaching

Assisting a customer to continue to be successful and assists in advocating for their needs

For more information call 503.750.2040 or email info@amiescommunitycare.com
amiescommunitycare.com

Alternative Services Inc. (ASI)



Alternative Services – Oregon, INC. is a non-profit organization dedicated to providing quality support for people with intellectual and developmental disabilities in Oregon since 1989.
 Our Mission: Supporting People to Experience Meaningful Lives!

Services Offered:

Residential Services	Supported Employment Services
Supported Living Services	Day Support Activity Services
Oregon Intervention Systems	Behavior Consultation

7165 SW Fir Loop #200
 Tigard, OR 97223
 503-941-5456 ext. 110
<https://www.asioregon.org/>



BrigaCare



BEHAVIOR SUPPORT AGENCY



Behavior Planning

Statewide
service



Education

OIS and PPI
trainings



Consulting

Policies and
compliance

- All of our 16 behavior professionals have degrees
- We serve adults and children in family, foster and 24 hr residential settings
- We provide plan maintenance for all those we support
- We are Medicaid certified and can bill eXPRS

**Request information or submit a request for
services at brigacare.com**

**Do you have someone that needs help?
<https://forms.gle/FSMN2N9mDRyQz7m6A>**

cecilia.t@brigacare.com ph: (503) 840-0387

Central City Concern



**CENTRAL CITY
CONCERN**

HOMES HEALTH JOBS

232 NW 6th Ave
Portland, OR 97209
centralcityconcern.org

Helping people find home, regain
health and move toward long-term
stability and success.

Services Offered:

Housing | Health Care | Recovery | Jobs

Central City Concern - BEST Team

BEST

Benefits & Entitlement Specialist Team



Since our inception in 2008, BEST has successfully assisted hundreds of individuals in obtaining benefits, which in turn has brought millions of federal dollars into our community. The impact is twofold:

The Person

Our clients obtain increased housing opportunities; access to health insurance which includes primary medical care, mental health care and medication; a source of income which provides stabilization and an increased sense of safety, pride, and hope.

The Community

Money is brought into our economy impacting stores and local businesses; medical facilities are reimbursed for unpaid bills; housing opportunities increase for individuals which in turn directly impacts homelessness in our community.

Phone: 971-271-6352 Fax: 503-445-0289

Referrals to BEST are accepted from approved referring sources

Mission Statement: Providing comprehensive solutions to ending homelessness and achieving self-sufficiency

Community Pathways



2475 SE Ladd Avenue, Suite 220, Portland, OR 97214
(503) 935-5243
info@communitypath.org
communitypath.org



Choose Your Own Path! Community Pathways, Inc. (CPI) assists people with developmental disabilities to live empowered, self-determined lives through community connections. We provide case management services to adults with intellectual or developmental disabilities. We have grown some in the past year and now serve up to 495 individuals in Clackamas, Multnomah, and Washington counties. Check out our website to learn more about resources, our company and team, and to sign up for our monthly newsletter!

Services Offered: CPI offers Person-Centered case management, resource referral, and access to community-based supports and services. Our administrative team supports provider enrollment, renewal and billing.

Our Values: CPI is committed to the philosophy and principles of self-determination – we believe and advocate that all people have the right to choose and direct their own services and lives. We base our mission on the below values:

Person-Centered Thinking	Compassion	Collaboration
Support	Advocacy	Empowerment

Compass Career Solutions

Helping people with disabilities achieve their goals through motivation, education and training.

COMPASS

CAREER SOLUTIONS



SERVICES

COMMUNITY INCLUSION

- Interest driven
- Small group
- Community based
- Diverse programming

EMPLOYMENT PATHWAYS

- Dozens of work experience options
- Individual or group settings
- Suitable for short and long term goals

DISCOVERY

- Strengths driven
- Explores diverse industries
- Comprehensive

INDIVIDUALIZED

COMPETITIVE EMPLOYMENT

- Job development
- Job coaching
- Career exploration
- Trial work experience

CONTACT US

CareersByCompass.com

Sasha Vidales, MBA, CESP

Pronouns: She/Her

Portland 3312 SE 122nd Ave

Office: 503-430-9653

Dungarvin Oregon, LLC

...RESPECTING AND RESPONDING TO THE CHOICES OF PEOPLE IN NEED OF SUPPORTS.



DUNGARVIN OREGON, LLC HAS BEEN A PROVIDER SINCE 1998 AND CURRENTLY PROVIDES COMMUNITY-BASED SUPPORTS TO INDIVIDUALS THROUGHOUT THE STATE. WE WORK COOPERATIVELY WITH EACH INDIVIDUAL, THEIR FAMILY, SUPPORT TEAM AND COUNTY/ STATE ENTITIES TO ENSURE QUALITY SERVICES. WE ARE COMMITTED TO OUR MISSION OF “RESPECTING AND RESPONDING TO THE CHOICES OF PEOPLE IN NEED OF SUPPORTS”. BECAUSE EACH INDIVIDUAL WE SUPPORT IS UNIQUE, WE PROVIDE SERVICES THAT ARE TAILORED TO EACH PERSON’S OWN HOPES, DREAMS, GOALS AND NEEDS.

AS A RESPONSIBLE SERVICE PROVIDER, WE ARE COMMITTED TO OFFERING QUALITY SERVICES THAT ARE FLEXIBLE AND RESPONSIVE TO THE INDIVIDUALS WE SUPPORT. HELPING PEOPLE WITH DEVELOPMENTAL DISABILITIES ACHIEVE THEIR FULL POTENTIAL IMPROVES THE ENTIRE COMMUNITY’S QUALITY OF LIFE. DUNGARVIN IS PROUD TO BE A PART OF THAT PROCESS.

DUNGARVIN OREGON, LLC

7320 SW Hunziker Road
Suite 101
Portland, OR 97223
(503) 624-0205
www.dungarvin.com



Our quality services are flexible and responsive to individual needs and choices. Services offered include:

- Behavior Supports
- Day Supports
- Employment Services
- Residential Services
- Supported Living
- Transportation
- Vocational Supports

Dungarvin

EASTCO Diversified Services, Inc.



Eastco is a non-profit organization established in 1968. Eastco and its dedicated, passionate staff help enhance the lives of adults with developmental disabilities.



Mission Statement

To support individuals with special needs in pursuit of homes, supported living services and activities of their choice within our community.

Services

Residential Program: Helps adults with developmental disabilities live semi-independently in an environment that maximizes their independence in Eastco operated and managed residential homes.

Recreational Program: Eastco Diversified Services offers a Life Enhancement Activities Program (LEAP) to all adults with developmental challenges. Activities away from home are essential for individuals with developmental disabilities to learn and use skills that promote participation and integration in the community among friends and neighbors.

Supported Living: Our supported living program supports adults who live independently and need assistance.

215 S.W. Wallula Ave.
Gresham, OR 97080
(503) 667-0613 <https://www.eastcods.org> E-Mail: eastco@eastcods.org

Employment Solutions - UCP Oregon



Job Placement

Interview Prep

Job Search Support

Job Coaching

Transportation
Planning

Career Exploration

VR Portfolios



- CUSTOMIZED SERVICES
- ONE-ON-ONE
- IN PERSON OR REMOTE
- ON YOUR SCHEDULE

CONTACT:

Nicole Vivanco,
UCP Oregon Employment Solutions
Department Manager

nvivanco@ucporegon.org

503-888-6585 | www.ucporegon.org

Exceed Enterprises



Our Mission:

Supporting individuals with diverse abilities...
their vision is our mission.

Our Vision:

We believe in possibilities. We collaborate with our community partners to foster innovation and growth. We support individuals with diverse abilities, connecting them to fulfilling work and play in their communities.



About us

Established in 1968, Exceed Enterprises is a non-profit organization that excels in providing vocational, recreational and personal development services for people with diverse abilities.

Exceed serves the Portland and Salem metro area offering a wide spectrum of services to support adults with diverse abilities at every stage in their journey to community integration and employment. We meet clients where they are and get them where they want to be through a variety of personal services, community activities, and diverse employment opportunities.

We work with our community and business partners to support people with diverse abilities and build meaningful employment opportunities to increase independence, self-confidence, and dignity.



Links to learn more:

- [Watch Exceed's client spotlight videos](#)
- [Visit Exceed's website](#)
- [Find us on Facebook](#)

Get in touch:

Contact **Gina Leatherwood** to learn more about our programs and services.
Phone: (503) 652-9036
Email: ginal@exceedpdx.com



Programs offered:

Community Services - community based recreation and employment training

Group Supported Employment - supported work teams with community employers

Work Futures - supports to find and maintain individual community employment

Benefits Counseling - information and benefits planning for informed choices

503.652.9036 | exceedpdx.com | 5285 SE Mallard Way, Milwaukie, OR 97222

FACT Oregon - English



You Have Found Your People



FACT Oregon supports families experiencing disability across the state promoting the belief that disability is natural, and that everyone is worthy of a full, self-determined life.



We are "by families, for families" and offer a support line to answer questions and provide support related to Special Education, Developmental Disability Services, and/or any questions that arise when raising a child who experiences disability.



Our helpful resources include a Special Education Toolkit for both early intervention/early childhood special education and K-12, diploma support, dispute resolution guides, and more!



We are dedicated to building community through our annual All Ability Tri4Youth, the Dream BIG Dreams auction, and our training events available to parents and professionals

FACT Oregon's mission is to empower families experiencing disability in their pursuit of a whole life by expanding awareness, growing community, and equipping families.

Together we can transform the face of disability.

Visit Our Website Today!

www.factoregon.org



FACT Oregon welcomes ALL families regardless of race, class, gender identity, and sexual orientation



FACT Oregon - Spanish



Has Encontrado a tu Gente



FACT Oregon apoya a las familias que viviendo con discapacidades discapacidades en todo el estado, promoviendo la creencia de que la discapacidad es natural y que todos son dignos de una vida plena y autónoma.



Somos "por familias, para familias" y ofrecemos una línea de apoyo para responder preguntas y brindar apoyo relacionado con Educación Especial, Servicios para Discapacidades del Desarrollo y / o cualquier pregunta que surja al criar a un niño con discapacidad.



Nuestros recursos útiles incluyen un equipaje de herramientas de educación especial para intervención temprana / educación especial para la primera infancia y K-12, apoyo para el diploma, guías de resolución de disputas ¡más!



Estamos dedicados a construir una comunidad a través de nuestra All Ability Tri4Youth anual, la subasta Dream BIG Dreams y nuestros eventos de capacitación disponible para padres y profesionales.

La misión de FACT Oregon es capacitar a las familias que viviendo con discapacidades discapacidades en la búsqueda de una vida completa mediante la expansión de la conciencia, el crecimiento de la comunidad y el equipamiento de las familias.

Juntos podemos transformar el rostro de la discapacidad.

Visite Nuestro Sitio Web Hoy
www.factoregon.org



FACT Oregon da la bienvenida a TODAS las familias independientemente de su raza, clase, identidad de género y orientación sexual



Good 2 Go Oregon

GOOD-2-GO OREGON

*Supportive Language * Solution Focused * Positive Partnerships*

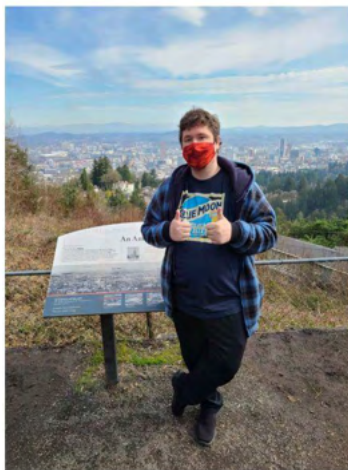
www.g2gooregon.com

Portland
30250 SW Parkway Ave
Wilsonville Or 97070
(503) 919-0110
jholson@good2gooregon.com

Central Oregon
300 Reed Market Road #255
Bend Or. 97702
(541) 306-3691
tyoung@good2gooregon.com

We like to think the work we do at Good-2-Go Oregon helps to change lives, not just the lives of the people we support, but our team members as well. We opened our first branch in Bend Oregon in 2009. We added our Portland branch in 2015 and are now serving over 150 customers.

Good-2-Go provides services in five major support areas: Life Skills Training, Attendant Care, Community Inclusion & Employment Supports including Vocational Rehab Job Developing



We are Good-2-Go . . . Are You?!

HDE HomeCare

hde Home Care *a family-owned company*

Over the past 10 years, HDE has made it their goal to provide a new standard in person centered services and create a successful environment for people to thrive as career-oriented professionals.

**12655 SW Center St #450
Beaverton, OR 97005
(503) 686-9079**

hdehomecare.com



Programs & Services



Attendant Care
info@hdehomecare.com

Behavior Services
behavior.services@hdehomecare.com

Employment Services
employment.services@hdehomecare.com

HIRE NW



971-401-1051
info@hirenw.com
www.hirenw.com



HIRE NW works closely with individuals guiding them step-by-step through the employment process. Our specialists are eager to find opportunities that will complement the interests and skill set of each person we serve.

Services Offered:

Employment Services	Day Support Services
Discovery Services	Job Coaching Services

Hire NW is inclusive, and we strive to provide excellent service no matter a person's ability, race, religion, national origin, ethnicity, gender, sexual orientation, size, veteran status, language, family make up or any other factor that makes an individual who they are.

Oregon Family to Family Health Information Center

Oregon Family to Family Health Information Center

Many Oregon families have a
child with special health needs.

It can help to talk with someone who
has been there.



Connect with a Parent Partner who has first-hand experience with Oregon's systems for children with medical, developmental, or behavioral conditions. **There is no cost to you.**

OREGON FAMILY TO FAMILY HEALTH INFORMATION CENTER

Information · Support
Resources · Coaching · Training

We have been there. We can lend a helping hand.

www.oregonfamilytofamily.org

English 855-323-6744

Spanish 503-931-8930

orf2fhic@ohsu.edu

Facebook: OregonF2FHIC

Pacific Opportunities



www.pacificopportunities.com
503-750-1543

Pacific Opportunities



We are a small, woman-owned business comprised of folks who value connections with other folks. Our team is passionate about providing the highest level of service to individuals of all abilities and backgrounds and finding the right match for each person. We even have a certified benefits counselor on staff to assist your clients with understanding the complexities of retaining their benefits and medical insurance while employed. We look forward to getting to know you and helping you on your career path!

DISCOVERY

As a certified Discovery provider, we work one-on-one with individuals to explore vocational themes that align a person's interests and strengths with attainable job goals. A 20-page profile captures details of the whole person to help plan vocational goals.

COMMUNITY-BASED WORK ASSESSMENTS

Our 2-week CBWAs provide individuals with real-life work experience and gather the baseline data needed to determine candidates' areas of strengths and opportunities for growth. We offer retail, grocery, food service, and clerical assessment sites. We can even tailor assigned tasks to meet an individual's specific needs. Our sites are always staffed by a qualified job coach.

VOCATIONAL/CAREER EXPLORATION

Is your client unsure of a career path? We help your client explore career opportunities based on their interests and work values. We match characteristics of their work history with similar occupations and set up job shadows to provide an opportunity with a professional currently working in a person's field of interest. Informational interviews give your client a chance to have their specific questions addressed and provide information on the current demand for those positions, levels of education and training required, and average salaries.

JOB PREPARATION & DEVELOPMENT

We help your clients write a professional resume and master application highlighting their skills and assets. After a series of practice interview sessions to build their skills and confidence, our highly trained employment specialists use all of their resources and contacts in the community to find current, appropriate job leads for your client. We perform cold calling to uncover the hidden job market and meet with employers on a daily basis to find out what their current hiring needs are. We advocate for our clients to ensure they will be placed in a job that matches their job goals and abilities, and we create customized positions as necessary to meet a client's specific needs.

JOB COACHING & RETENTION

Once your client has secured a competitive job, we provide one-on-one job coaching to help ensure training goes smoothly. We help employees get up to speed when learning new tasks, and we help them learn how to interact professionally with supervisors and coworkers. We advocate for clients with supervisors for accommodations as necessary, and we help clients retain employment for the long term.

LONG-TERM SUPPORTS

Pacific Opportunities is contracted with all the local Brokerages as well as MCDD and CCDD to provide long-term job coaching to individuals who would like that level of support.

LABOR MARKET RESEARCH

Wondering whether additional schooling, training, or a certificate would help your client get a job? Need a sense of how many current job openings exist in a particular field? Let us reach out to our contacts in the field of your client's choice to get a sense of current job requirements, availability/demand, and other relevant data.

Rainbow Adult Living



Rainbow Adult Living

16432 SE Stark St

Portland, Or 97233

(503)232-0394

Info@rainbowadulthoodliving.org

Our Mission

The mission of Rainbow Adult Living Facilities, Inc. is to support quality lifestyles for adults with developmental disabilities. The agency recognizes that persons with disabilities have a right to the same opportunities for fulfillment in their lives as persons without disabilities. These include the opportunity to increase one's independence, the opportunity to be productive, and the opportunity to be fully integrated into one's community.

Residential Facilities Ombudsman Program



Residential
Facilities
Ombudsman
Program

1-844-674-4567
RFO.info@oregon.gov
Live Life!



Advocates working to protect individual rights

Serving Oregonians living in homes licensed or certified for
Mental Health and/or Intellectual or Developmental Disabilities

RFO provides resident-directed complaint resolution

- Do you have a concern about quality of care?
- Do you know your rights as a resident?
- Need assistance in understanding or resolving an issue?



How we can help:

- Visit individuals in their homes through regular, unannounced visits
- Receive, identify, and investigate concerns on behalf of individuals
- Educate and assist individuals to resolve complaints and exercise their rights
- Advocate to resolve resident rights and quality of life concerns
- Identify and report systemic issues affecting services for individuals

For more information call 1-844-674-4567 or email RFO.info@oregon.gov

Ride Connection



(503)226-0700

www.rideconnection.org

Linking accessible, responsive transportation alternatives with individual and community needs.

Serving older adults and/or people with a disability with the following services:

- **Door-to-Door Program**
- **Ride Together/Mileage Reimbursement**
- **Veterans Helping Veterans**
- **Community Shopping Shuttles**
- **RideWise Travel Training**

Services are free, though donations are appreciated!

**Call our Service Center at 503.226.0700 or
TTY: 7-1-1 (Oregon Relay Service).
Monday through Friday, 7:30am to 5:00pm.**

Ride Connection- Travel Training Program



Travel Training Program

Serving older adults and/or people with a disability



One-on-one travel training that gives a personalized, hands-on experience using the transit system in Multnomah, Clackamas and Washington counties.

Participants in our RideWise program receive access to information, public transportation training, and support centered on the safe and independent use of public transportation.

Services are free, though donations are appreciated!

www.rideconnection.org

Fill out a Travel Training request form [online](#) or give us a call at 503.226.0700

TTY: 7-1-1 (Oregon Relay Service)

M-F 7:30am to 5:00pm

RISE Services, Inc



SUPPORTING CHILDREN, ADULTS, AND THEIR FAMILIES

Since 1987, RISE has provided practical, professional, and personal growth opportunities for children, adults, and their families. With our innovative approach, we are dedicated to transforming the lives of the individuals and families we serve through the delivery of person-centered services.

Our services have expanded from moving individuals living in institutions to family settings into supporting adults and children with highly diverse support needs in a wide variety of homes and community-based settings.



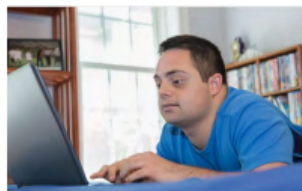
OUR VALUES

Committed to safety, equality, and choice, we place service above self and encourage our team members to do all they can to exceed expectations.

WHAT WE DO:



SUPPORTED LIVING SERVICES



RESIDENTIAL SERVICES



HOST HOME SERVICES



EMPLOYMENT SERVICES

Contact us Through our Website at:

riseservicesincor.org/contact



Department of County Human Services

The Arc of Portland Metro

The Arc Portland Metro

6929 NE Halsey St. | Portland, OR 97213

Phone (503) 223-7279 | Fax (503) 223-1488

thearc@thearcpx.org | www.thearcpx.org



The Arc Portland Metro provides advocacy, support, and services to children and adults with intellectual and developmental disabilities [IDD] and their families.

Our vision is that people with all levels of ability have and embrace the opportunity to work, have relationships, contribute to their communities, and live life to the fullest.

Our values are those of equal opportunity:

- We advocate for rights and opportunities for individuals with intellectual and developmental disabilities and their families.
- We believe that every person deserves to be treated with compassion, dignity, and care.
- Each person can make a difference, and we believe that by working together our vision of a better life can become a reality.

Services offered:

Used Goods Donation Program	The Arc Thrift Store	Community Inclusion Support
Healthy Lifestyles Program	Club Impact	Recreation Club

Trellis



**THERE'S NO COMMUNITY,
LIKE THE TRELLIS COMMUNITY!**

TRELLIS, INC.

We are an established 10-year-old agency providing Community and Employment services to adults in the I/DD community!

SERVICES OFFERED:

- Attendant Care & DSA 1:1
- DSA Services
- Job Coaching
- Discovery & Exploration
- Job Development
- Employment Path



SCAN THE QR CODE FOR MORE
DETAILED INFORMATION
ABOUT OUR SERVICES!



www.trellis-or.com



503-387-5775



admin@trellis-or.com

Visions LLC



VISIONS, LLC



Positive
change
through
behavior
consultation

We provide state-wide services for a wide variety of needs, using the following:

- Positive Behavior Supports
- Principles of Applied Behavior Analysis
- Person-Centered Planning

Services include assessment, behavior support plan development and ongoing training & support for individuals, their families, providers & key stakeholders.



120 SHELTON MCMURPHEY BLVD. #250
EUGENE, OR 97405
(541)683-6707



WWW.VISIONSLLC.ORG

Volunteers of America



Volunteers of America®
OREGON

3910 SE Stark Street, Portland, OR 97214

(503) 235-8655

www.voaor.org

information@voaor.org

At Volunteers Of America Oregon, we specialize in family safety, substance use, behavioral health, and reentry from the criminal justice system. For 125 years, we have been empowering individuals, families, and communities in Oregon including the aging population, young people, men and women returning from prison, people with disabilities, and those recovering from addictions. Our work touches the mind, body, heart – and ultimately the spirit – of those we serve, integrating our deep compassion with highly effective programs and services.

Services Offered

- Assessment & Evaluation
- Group & Individual Counseling
- Mentoring and Case Management
- DUII Resolution
- Naturopathic Health Evaluation and Care
- Medication Management
- Medication Supported Recovery
- Supervision and Reentry Support
- Supportive Housing
- Problem Gambling
- Batterer Intervention
- Residential Treatment
- Family Relief Nursery
- After School Program
- Substance Misuse Prevention
- Domestic Violence Survivors Support
- Restraining Order Support
- Adult Day Centers
- Affordable Senior Housing
- Drop-In Child Care

Learn More at

www.voaor.org/find-services

Westside Community Focus

Westside Community Focus

Apply now at:

<https://westsidecommunityfocus.org/careers-with-westside>

Serving Adults with Intellectual Disabilities Since 1970

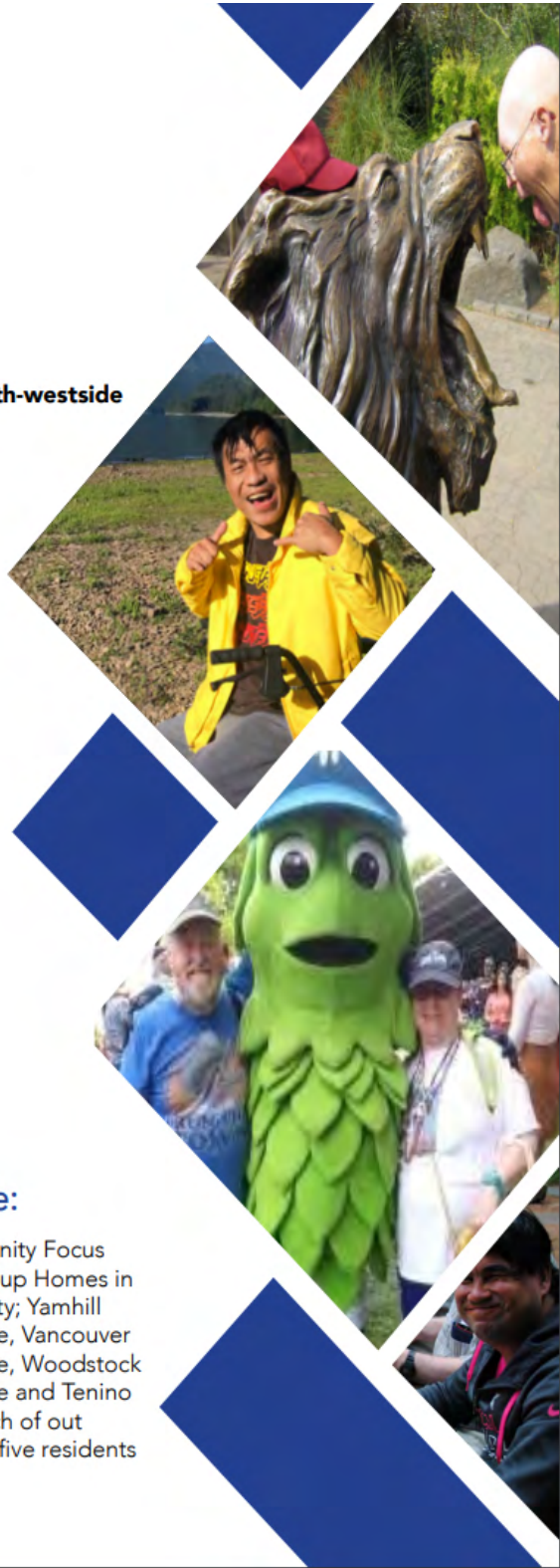
For over 50 Years, Westside Community Focus has been dedicated to our mission of assisting adults with intellectual disabilities in the Portland Metropolitan area.

Supported Living:

Westside Community Focus' Supported Living Program serves 60+ clients who reside in either Multnomah, Washington or Clackamas Counties. We work with out clients who live in the community, either in their own homes or with family memebers. We offer residential supports to these clients which can range anywhere from assistance in housekeeping to going with them to medical appointments to helping clients find a new place to live.

Group Home:

Westside Community Focus operates four Group Homes in Multnomah County; Yamhill Street Grouphome, Vancouver Street Grouphome, Woodstock Street Grouphome and Tenino Group Home. Each of out Grouphomes has five residents and 24/7 staff.



Digital Catalog - Agencies

ALSO

Phone: 503-489-6565

Website: www.alsoweb.org

Contact: info@alsoweb.org

Services: Transition Support Through School Years to Adulthood through Aging, Work Supports, Access to Resources, Client Advocacy, Supports and Services to Children and Adults in their Homes, Workplaces and Community.

Alternative Services Inc. (ASI)

Phone: 503-941-5456 ext.110

Website: www.asioregon.org

Contact: 7165 SW Fir Loop, #200, Tigard, OR 97223

Services: Residential Services, Supported Living Services, Oregon Intervention Systems, Employment Services, Day Support Activity, Behavior Consultation.

Amie's Community Care

Phone: 503-751-2041

Website: www.amiescommunitycare.com

Contact: Alyssa Breitsenstein - Alyssa@amiescommunitycare.com

Services: Employment, Day Support Activity, In-Home Provider Agency

BrigaCare

Phone: 503-840-0387

Website: www.brigacare.com

Contact: Cecilia.t@brigacare.com

Services: Behavior Supports

Central City Concern

Phone: Housing: 503-525-8489; Health Care: 971-361-7888

Website: www.centralcityconcern.org

Contact: XXX

Services: Housing, Health Care, Addiction Recovery, Employment

Central City Concern Benefits and Entitlements Specialist Team

Phone: 971-271-6352

Website: www.centralcityconcern.org

Contact: 707 NW Everett St, Portland OR 97209

Services: Housing, Health Care, Mental Health Care, Pharmacy, Employment

Community Pathways

Phone: 503-935-5243

Website: www.communitypath.org

Contact: info@communitypath.org

Services: Case Management, Resource Referral, Access to Community-Based Supports and Services, Provider Enrollment, Renewal and Billing.

Community Services, Inc. (CSI)

Phone: 503-648-6415

Website: www.cs-inc.org

Contact: Kelly Thran, kthran@cs-inc.org, 503-648-6415 ext 301

Services: Residential Services, Supported Living Host Homes

Compass Career Solutions

Phone: 503-430-9653

Website: www.careersbycompass.com

Contact: 3312 SE 122nd Ave, Portland

Services: Community Inclusion, Employment Services, Discovery Services

Dirkse Counseling & Consulting

Phone: 503-265-9256

Website: www.dirksecc.com

Contact: Glenn Bishop, gbishop@dirksecc.com

Services: Employment Services, Counseling, Employer Services and Reasonable Accommodations

Dungarvin, Oregon LLC

Phone: 503-624-0205

Website: www.dungarvin.com

Contact: Stacie Athman, sathman@dungarvin.com, 503-624-0205 ext.8006

Services: Residential Services, Employment Services, Day Support Activity, Behavioral Support, Conferences or Events for Clients, Staff, Providers, and/or Families

Employment Solutions - UCP Oregon

Phone: 503-888-6585

Website: www.ucporegon.org

Contact: Nicole Vivanco, nvivanco@ucporegon.org

Services: Employment Services, Job Coaching

Exceed Enterprises

Phone: 503-652-9036

Website: www.exceedpdx.com

Contact: Gina Leatherwood, ginal@exceedpdx.com

Services: Employment Services

FACT Oregon

Phone: 503-786-6082 (call or text)

Website: www.factorregion.org

Contact: support@factorregion.org

Services: Education Related Services

Full Life

Phone: 971-284-1190

Website: www.fulllife.com

Contact: Devi Morris, devimorris@fulllife.com

Services: Employment Services, Day Support Activity

Goodwill Industries of the Columbia Willamette

Phone: 503-963-3278

Website: www.meetgoodwill.org

Contact: Rebecca Hall, rhall@gicw.org

Services: Employment Services, Day Support Activity

Good-2-Go Oregon

Phone: 503-919-0110

Website: www.g2gooregon.com

Contact: jholson@good2gooregon.com

Services: Life Skills Training, Attendant Care, Community Inclusion, Employment Supports, Vocational Rehabilitation Job Development

HDE Home Care

Phone: 503-686-9079

Website: www.hdehomecare.com

Contact: Attendant Care: info@hdehomecare.com,

Behavior Services: behavior.services@hdehomecare.com,

Employment Services: employment.services@hdehomecare.com

Services: Attendant Care, Behavior Services, Employment Services

HIRE NW

Phone: 971-401-1051

Website: www.hirenw.com

Contact: info@hirenw.com

Services: Employment Services, Discovery Services, Day Support Activity, Job Coaching

Housing Independence

Phone: 503-740-5715

Website: <https://housingindependence.org>

Contact: Jessie Robert, jessier@housingindependence.org

Services: Employment Services, Day Support Activity, ADL Services and Housing Services

Independence NW

Phone: 503-546-2951

Website: www.independencenw.org

Contact: Larry Deal, larry@independencenw.org

Services: Brokerage

Inspire Connections

Phone: 971-413-6689

Website: www.inspire-connections.com

Contact: Erin Hays, erin@inspire-connections.com

Services: Community Living Supports

Oregon APSE

Phone: 503-248-3683

Website: <https://oregonapse.org>

Contact: Toni Smith, toni.is.smith@gmail.com

Services: Conferences or Events for Clients, Staff, Providers and/or Families, Legislative Advocacy, Resources, Training and Networking

Oregon Commission for the Blind

Phone: 503-720-8871

Website: www.oregon.gov/BLIND

Contact: Cam Jordan-Pummell, cam.jordan@ocb.oregon.gov

Services: Employment Services

Oregon Family to Family Health Information Center

Phone: English: 855-323-6744, Spanish: 503-931-8930

Website: www.oregonfamilytofamily.org

Contact: contact@oregonfamilytofamily.org

Services: Information, Family Support, Resources, Coaching, Training

Pacific Opportunities

Phone: 503-750-1543

Website: www.pacificopportunities.com

Contact: info@pacificopportunities.com

Services: Discovery, Community Based Work Assessments, Vocational/Career Exploration, Job Development, Job Coaching, Long Term Supports, Labor Market Research.

Pam Smith - Behavioral Support Services

Phone: 708-955-5711

Website: www.pjsconsultation.com

Contact: Pam Smith, pamsmith.business@gmail.com

Services: Behavioral Support Services

Portland Parks & Recreation Adaptive & Inclusive Rec.

Phone: 503-307-4131

Website: www.portland.gov/parks

Contact: Jane Doyle, jane.doyle@portlandoregon.gov

Services: Day Support Activity, Recreational Activities

Rainbow Adult Living

Phone: 503-232-0394

Website: www.rainbowadulthoodliving.org

Contact: info@rainbowadulthoodliving.org

Services: Residential Services

Residential Facilities Ombudsman Program

Phone: 1-844-674-4567

Website: <https://www.oltco.org/rfo/about-us>

Contact: RFO.info@oregon.gov

Services: Advocating for Individual Rights and Enhancing Quality of Life in Residential Settings. Resident Directed Complaint Resolution. Receiving, Identifying and Investigating Concerns on Behalf of Individuals, Visiting Individuals in their Homes through Regular and Unannounced Visits.

Ride Connection

Phone: 503-528-1749

Website: www.rideconnection.org

Contact: Lisa Sempert, lsempert@rideconnection.org

Services: Transportation Services

RISE Services

Phone: 503-345-8001

Website: www.riseservicesinc.org

Contact: Kathryn Gerhards, kathryng@riseservicesinc.org

Services: Residential Services, Employment Services, Day Support Activity, Behavioral Supports

Swindells Resource Center

Phone: 503-215-2429

Website:

<https://oregon.providence.org/our-services/s/swindells-resource-center/>

Contact: Janet Honea, janet.honea@providence.org

Services: Conferences or Events for Clients, Staff, Providers and/or Families; Caregiver Peer Support, Education, Free Lending Library, Care Notebook Organizer to Centralize Important Paperwork, Caregiver Education

The Arc of Portland Metro

Phone: 503-223-7279, fax: 503-223-1488

Website: www.thearcpx.org

Contact: thearc@thearcpx.org

Services: Community Inclusion Support, Used Goods Donation Program, The Arc Thrift Store, Healthy Styles Program, Club Impact, Recreation Club

Visions LLC

Phone: 541-683-6707

Website: <https://visionsllc.org/oregon>

Contact: davejaques@visionsllc.org

Services: Behavior Support Services

Volunteers of America

Phone: 503-235-8655

Website: www.voar.org

Contact: information@voar.org

Services: Counseling and Mental Health Services, Medication Management, Supportive Housing, Residential Treatment, After School Program, Domestic Abuse Support, Adult Day Center, and more

Westside Community Focus

Phone: 503-222-7332

Website: www.westsidecommunityfocus.org

Contact: admin@westsidecommunityfocus.org

Services: Residential Services, Supported Living Services