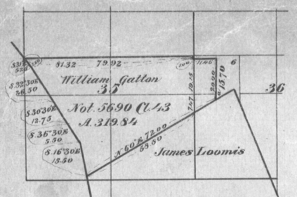
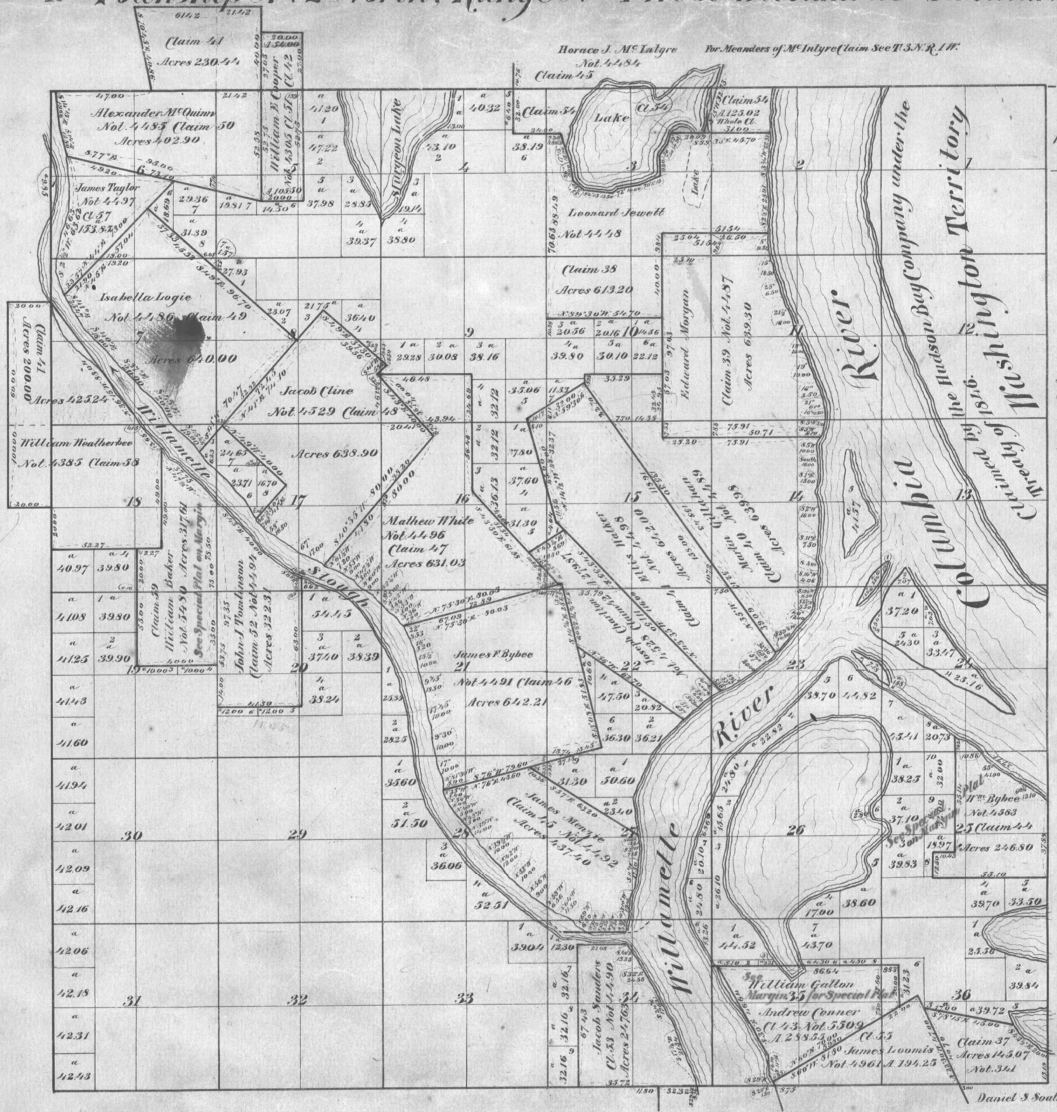


15 Township N^o 2 North, Range N^o 1 West Willamette Meridian.



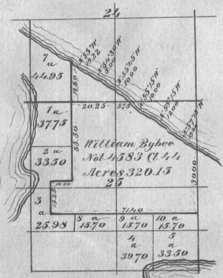
The above Special plat of Cl 43 in T2N R1W Will. Mer. Ore. is strictly conformable to the field notes of the survey thereof on file in this Office which have been examined and approved. Surveyor General's Office Eugene City Nov. 14th 1863 B. P. Rogers Sur. Gen. of Ore.

Legal Subd. Donation (6) Surveyed 877962
Public land remaining 1725413
Total on Claim Map.



HOLMES AFFIDAVIT EXH. 4

The above Special plat consequent upon the subdividing the donation claim of Wm Baber (Cl 59, Not 5480, Secs 15 & 19 in T2N R1W Will. Mer. is correct. Surveyor General's Office Eugene City July 22 1870 G. L. Applegate Sur. Gen. of Ore.



The above Special plat of Cl 44, Wm Bybee in T2N R1W Will. Mer. Ore. is strictly conformable to the field notes of the survey thereof on file in this Office, which have been examined and approved. Surveyor General's Office Eugene City Oct. 30, 1863 B. P. Rogers Sur. Gen. of Ore.

The above Map of the Survey of Claims in Township N^o 2 North, Range N^o 1 West Will. Mer. Oregon, is a true and correct copy of the Original Map on file in this Office. Surveyor General's Office, Portland, Ore. Aug. 5th 1897. Robert A. Habersham Sur. Gen. of Ore.

The above Map of the Survey of Claims in Township N^o 2 North, Range N^o 1 West Willamette Meridian, Oregon, is strictly conformable to the field notes of the survey thereof on file in this Office, which have been examined and approved. Surveyor General's Office Eugene City Sept. 25th 1862 B. P. Rogers Sur. Gen. of Ore.