



Landscaping for Wildlife

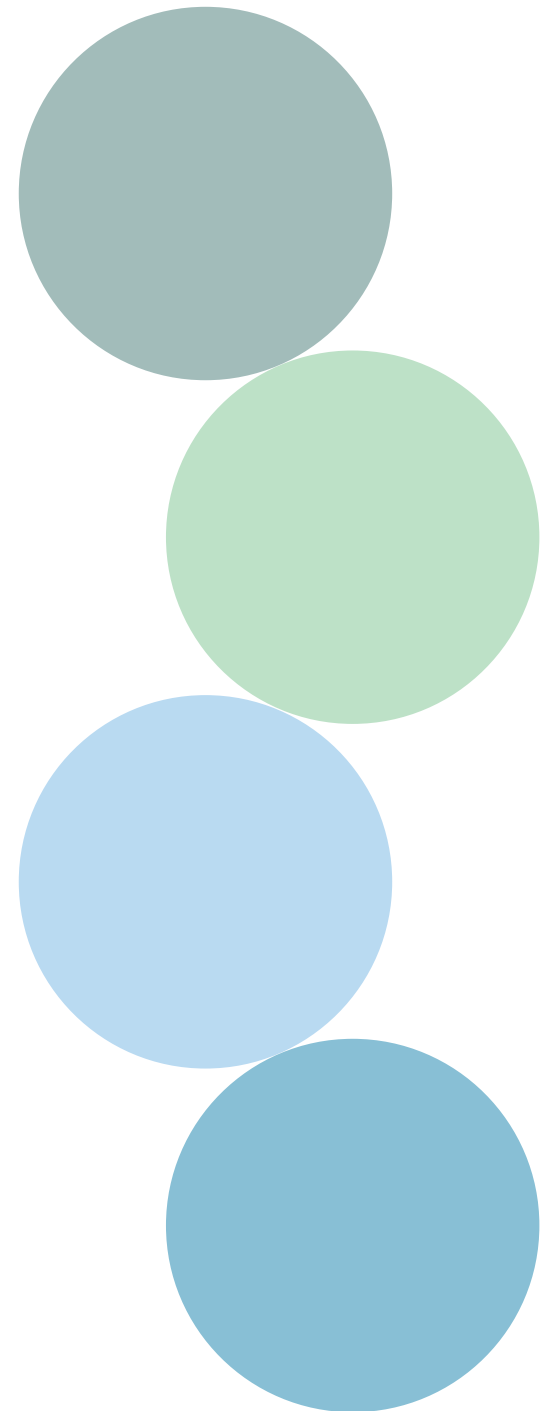
Katie Meckes

Urban Lands Program Planner



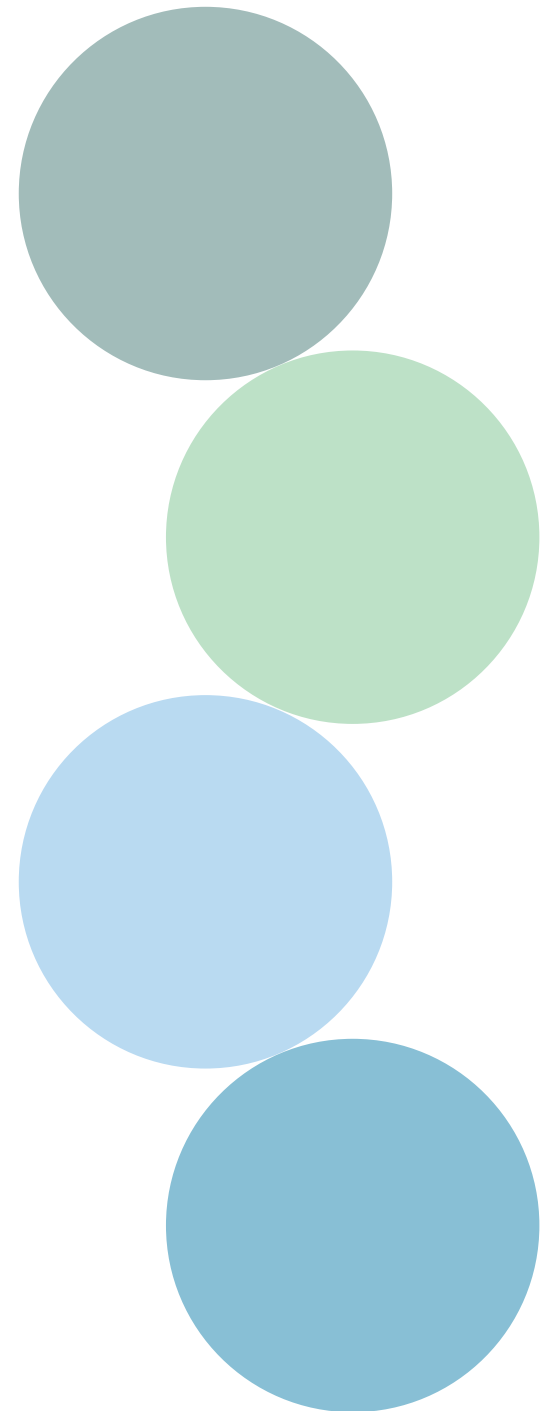
Outline

- Who is EMSWCD?
- Naturescaping 101
- Examples of Naturescaping
- Core Naturescaping Principles
- Encouraging Beneficial Wildlife

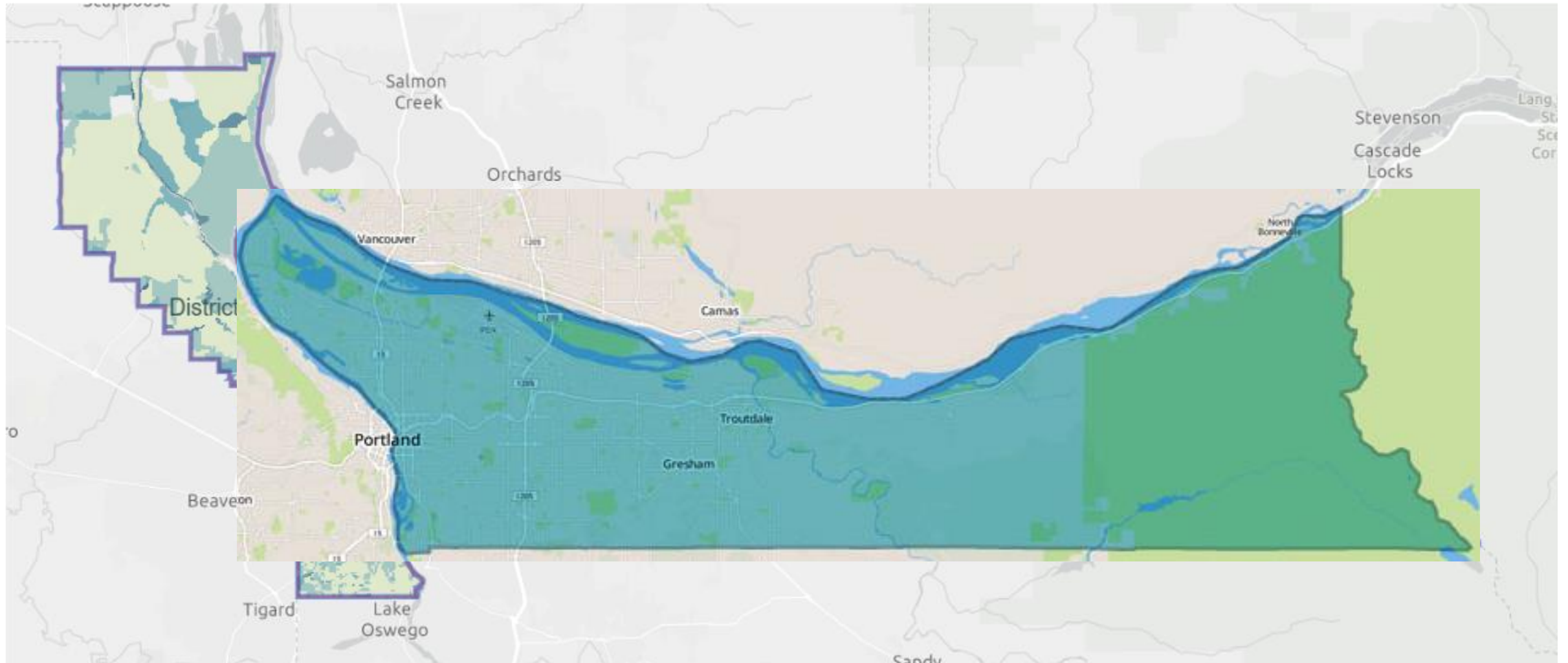




Who is
EMSWCD
anyway?



Who is EMSWCD?



We help people care for land and water.

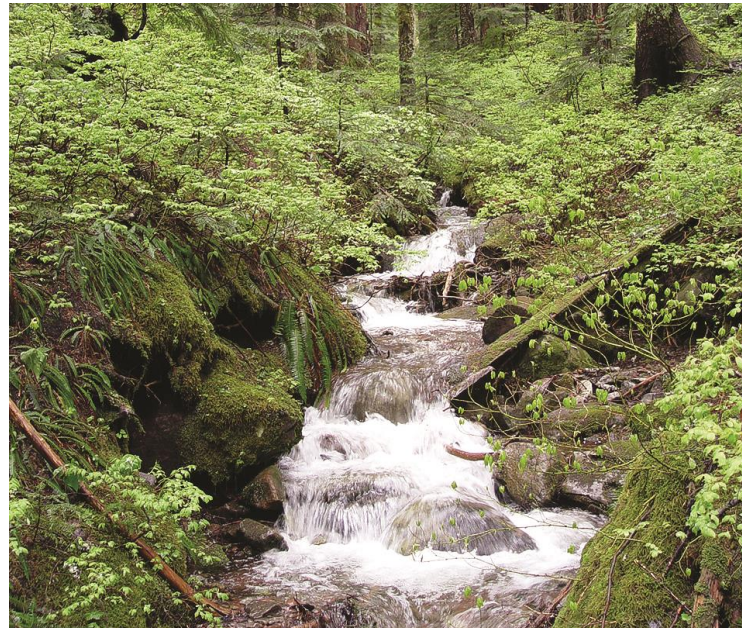


Grants

Land Legacy
& Conservation

Rural Lands

Urban Lands





Workshops
Presentations
Events & Tours
Tech Assist

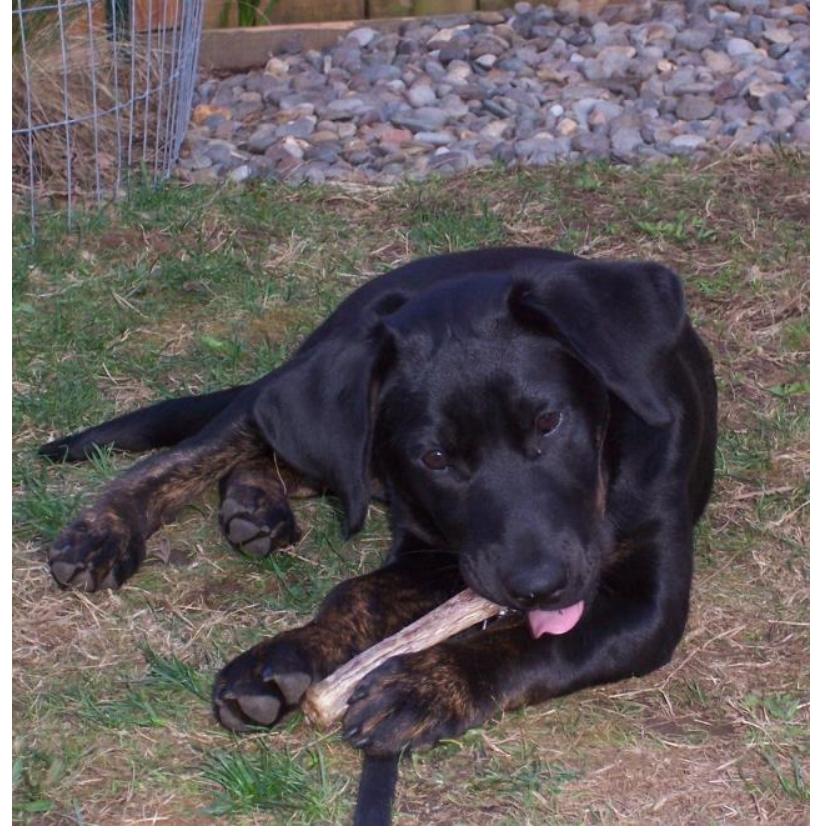


Why?





Some practices
yield strange
results...



To promote spaces that are healthy for people, pets and wildlife

Variety of Landscapes





What is Naturescaping?

Why Native Plants?

- Adapted to local soils & climate patterns
- Resistant to local garden pests
- Wildlife recognize their flowering & fruiting cycles
- Thrive without synthetic fertilizers or pesticides



Benefits of Native Plants

- Low maintenance
- Drought tolerant = save \$
- Food & shelter for wildlife
- Pollution prevention



Downside to Non-native Ornamental Plants

- Disease problems = pesticide use
- Can become weedy or invasive
- Nectar source but not larval source
- “Pest-free” ornamentals





Naturescaping Examples

Before and After...

PARKROSE UNITED METHODIST CHURCH
FINE ARTS SERIES TODAY
FOR INFORMATION CALL 253-7565
SUSAN B ANTHONY DATE APRIL 6
PERF. MELINDA STROBEL TIME 2: PM















2008



2011





Naturescaping: Core Principles

- Native Plants
- Evaluate Lawn Needs
- Water Wisely
- Mulch
- Encourage Wildlife



Use Native Plants

Overstory
Large Trees

Douglas Fir

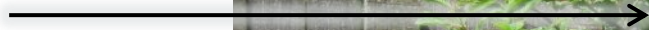
Vine Maple

Understory
Small Trees
Large Shrubs
Groundcovers

Oxalis



Cascara



Oceanspray



Red Columbine



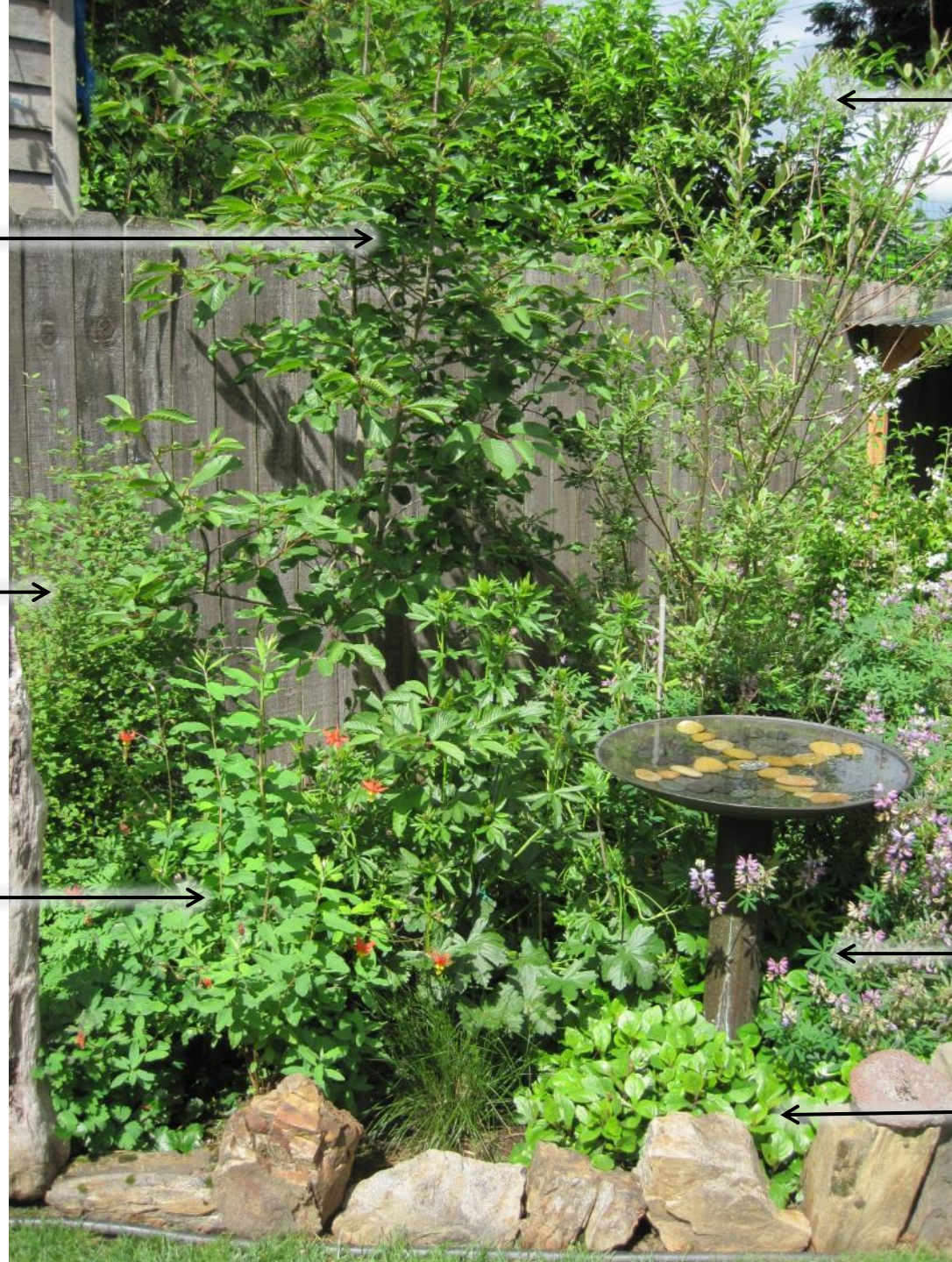
Pacific Willow



Lupine



Salal





Evaluate Your Lawn Needs



Could you replace it with something else?



Coming up Thursday: Water Conservation

Encouraging Wildlife



Food

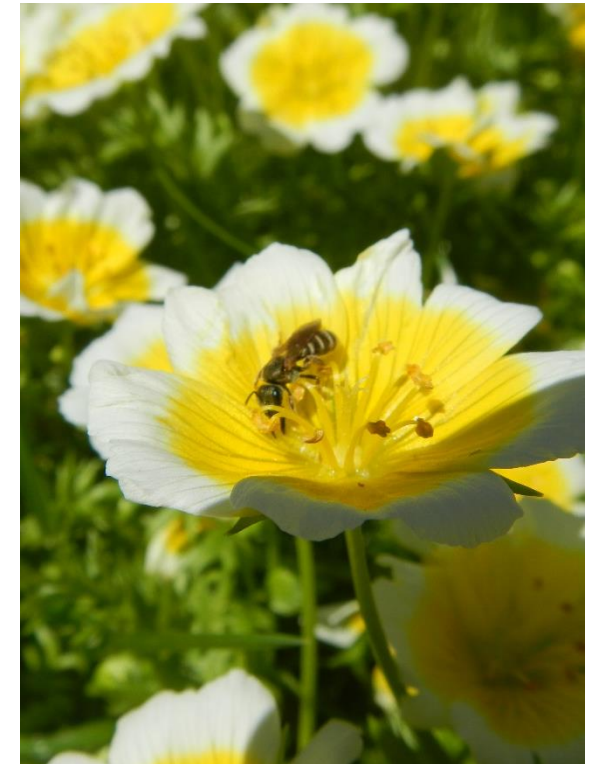
Select a wide variety:

Color

Year-round fruiting

Flower shape

Bloom times



Food

Blooming Timetable of Native Plants in the Middle Willamette Valley

Native Flowering Plant Species

Common Name	Botanical Name	Jan	Feb	Mar	Apr	May	Jun	Jul	Aug	Sep
Western buttercup	<i>Ranunculus occidentalis</i>			yellow						
Shooting star	<i>Dodecatheon hendersonii</i>			pink						
Western trillium	<i>Trillium ovatum</i>			white						
Meadow checkerbloom	<i>Sidalcea campestris</i>				light pink					
Tall larkspur	<i>Delphinium trolliifolium</i>				blue/purple					
Rosy plectritis*	<i>Plectritis congesta*</i>				pink					
Oregon geranium	<i>Geranium oreganum</i>				pink					
Riverbank lupine*	<i>Lupinus rivularis*</i>				purple					
Woodland strawberry	<i>Fragaria vesca ssp. Brachteata</i>				white to pink					
Oregon iris	<i>Iris tenax</i>				purple					
Camas	<i>Camassia leichtlinii</i> or <i>quamash</i>				blue/purple					
Western columbine	<i>Aquilegia formosa</i>				red					
Fringecup	<i>Tellima grandiflora</i>				greenish-white					
Pacific waterleaf*	<i>Hydrophyllum tenupes*</i>				light green					
Varileaf phacelia	<i>Phacelia heterophylla</i>				white					
Lance sealfheal	<i>Prunella vulgaris ssp. Lanceolata</i>						purple			
Slender cinquefoil	<i>Potentilla gracilis</i>						yellow			
Showy milkweed*	<i>Asclepias speciosa*</i>						light pink			
Harvest brodiaea	<i>Brodiaea elegans</i>						purple			
Yarrow*	<i>Achillea millefolium*</i>						white			
Canada goldenrod	<i>Solidago canadensis</i> var. <i>salebrosa</i>						yellow			
Showy tarweed	<i>Madia elegans</i>						yellow			
Douglas aster*	<i>Symphotricum subspicatum*</i>							light purple		
		Jan	Feb	Mar	Apr	May	Jun	Jul	Aug	Sep

Bold face type* indicates host & nectar plants which are highly suitable for pollinators.

Color bars indicate associated flower color and flowering timeframe under "normal" climate conditions.

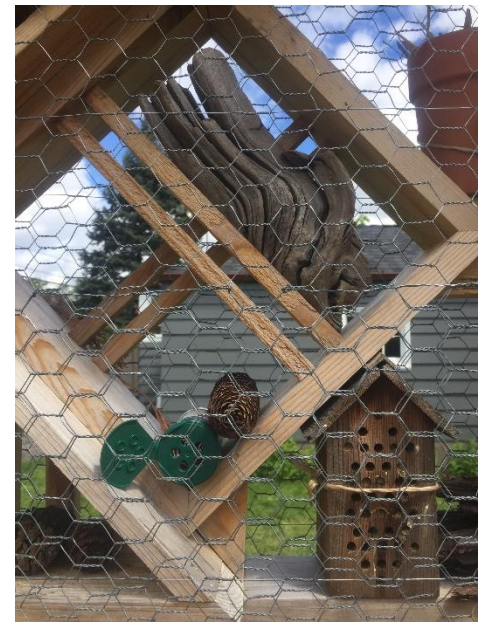
Marion Soil & Water
Conservation District



Water



Shelter



Planting for Beneficial Wildlife



Kinnikinnick

Arctostaphylos uva-ursi



6" x 3+'



Dry; Moist



Full Sun; Part Shade



- Evergreen groundcover.
- Bright red berries followed by pink flowers.
- Mat forming. Erosion control

Provides: Nectar, Larval food,
Caterpillar host plant

Wildlife: Bees, Pest-eating insects,
Hummingbirds, Butterflies



Coastal Strawberry

Fragaria chiloensis



6" x 1-3'



Dry; Moist



Full Sun; Part Shade

- Delicate small, white flowers followed by egg-shaped berries
- Dark green, glossy leaves turn red in winter

Provides:

Larval food source.

Caterpillar host plant

Wildlife: Butterflies. Bees & other insect pollinators. Pest-eating insects



Salal

Gaultheria shallon



6" x 3+'



Dry; Moist;



Part Shade; Full Shade

- Evergreen shrub
- Sweet dark blue/purple berries
- Pinkish-white flowers
- Great for bare areas under conifers

Provides: Nectar source

Wildlife: Bees & other insect pollinators.
Butterflies. Hummingbirds.



Blue-eyed Grass

Sisyrinchium idahoense



1½' x 1'



Dry; Moist;
Seasonally Wet



Full Sun; Part Shade

- Member of iris family
- Flattened leaves sport 1" blue-purple flowers
- Semi-evergreen, grows in small tufts/clumps
- Great rain garden plant!

Provides: Nectar source

Wildlife: Bees & other insect pollinators.
Butterflies. Beneficial insects. Pest
eating insects



Cusic's Checkermallow

Sidalcea cusickii



4' x 2'



Dry; Moist



Full Sun; Part Shade



- Deep, tubular rose-like flowers on 3-4' stalk
- Considered rare/endangered native plant
- AKA Rose Checkermallow or Wild Hollyhock

Provides: Nectar source. Caterpillar host plant.
Larval food source.

Wildlife: Bees & other insect other pollinators.
Hummingbirds. Native butterflies.



Douglas Aster

Aster subspicatus



3' x 1-3'



Moist



Full Sun; Part Shade

- Late-season blooms are critical resource for native insect pollinators & butterflies
- Fast-growing
- Spreads vigorously by rhizomes

Provides: Nectar source. Caterpillar host plant.
Larval food source.

Wildlife: Bees & other insect other pollinators.
Hummingbirds. Native butterflies.



Oregon Iris

Iris tenax



6" x 1'



Dry; Moist



Full Sun; Part Shade; Shade

- Grass-like stems with showy purple flowers
- Flowers can sometimes be white to cream
- Grows in clumps, spreads by rhizomes

Provides: Nectar source

Wildlife: Bees & other insect other pollinators.
Hummingbirds. Butterflies.
Beneficial insects.



Low Oregon Grape

Mahonia nervosa



1' x 2'



Dry; Moist



Full Sun; Part Shade; Full Shade

- Spiky, matte finish leaves
- Bright sprays of yellow flowers mature into berries
- Great for hard-to-fill spots under large trees

Provides: Nectar source.

Wildlife: Bees & other insect other pollinators.
Hummingbirds. Butterflies.
Beneficial insects.



Evergreen Huckleberry

Vaccinium ovatum



8' x 8'



Dry; Moist



Full Sun; Part Shade; Full Shade

- Slow growing, low maintenance
- Important late summer & early fall food
- Great food & shelter for wildlife

Provides: Nectar source. Larval food source.
Caterpillar host plant.

Wildlife: Bees & other insect other pollinators.
Hummingbirds. Butterflies. Birds.



Snowberry

Symphoricarpos albus



1-8' x 3-5'



Dry; Moist



Part Shade; Full Shade



- Showy white berries remain on bare branches
- Birds eat berries through winter when other food is scarce
- Berries are TOXIC to humans

Provides: Nectar source. Larval food source.
Caterpillar host plant.

Wildlife: Bees & other insect other pollinators.
Hummingbirds. Butterflies.



Nootka Rose

Rosa nutkana



8'x 3-5'



Dry; Moist,
Seasonally Wet



Full Sun; Part Shade



- E
- B
- M
- d

Provides: Nectar source. Larval food source.
Caterpillar host plant.

Wildlife: Bees & other insect other pollinators.
Hummingbirds. Butterflies. Birds.



Tall Oregon Grape

Mahonia aquifolium



6' x 3'



Dry; Moist



Full Sun; Part Shade; Full Shade



- State flower of Oregon
- Spreads by runners/rhizomes
- B
- M

Provides: Nectar source

Wildlife: Bees & other insect other pollinators.
Butterflies. Beneficial insects.



Black Twinberry

Lonicera involucrata



8'x 8'



Dry; Moist



Full Sun; Part Shade, Shade

- Mid-late season bloomer: stays in bloom longer
- Fast growing woody shrub w/ twin forming flower and fruit
- Yellow tubular flowers arrive in pairs

Provides: Nectar source. Larval food source.
Caterpillar host plant.

Wildlife: Bees & other insect other pollinators.



Red Flowering Currant

Ribes sanguineum



Up to 12' x 10'



Dry; Moist



Full Sun; Part Shade

- Some of the earliest blooming flowers
- A hummingbird & butterfly favorite!
- M

Provides: Nectar source

Wildlife: Bees & other insect other pollinators.
Butterflies. Beneficial insects.
Hummingbirds



Vine Maple

Acer circinatum



Up to 25' x 20'



Dry; Moist



Full Sun; Part Shade; Full Shade

- Can maintain/trim for smaller stature
- B
- M

Provides: Nectar source. Larval food source.
Caterpillar host plant.

Wildlife: Bees & other insect other pollinators.
Butterflies. Beneficial insects.



Osoberry

Oemleria cerasiformis



Up to 15' x 8'



Dry; Moist



Full Sun; Part Shade; Full Shade

- Can be pruned for smaller stature
- B
- M

Provides: Nectar source. Larval food source.
Caterpillar host plant.

Wildlife: Bees & other insect other pollinators.
Butterflies. Hummingbirds and other
birds.



Red-Osier Dogwood

Cornus sericea



Up to 15'x 10'



Moist; Wet;
Perennially Wet



Full Sun; Part Shade; Full Shade

- Seasonal interest and color – all year
- Fast-growing.
- Cuttings!
- Prune back to keep a manageable size

Provides: Nectar source. Larval Source.
Caterpillar host plant.

Wildlife: Bees and other insect pollinators.
Butterflies. Hummingbirds.



Douglas Fir

Pseudotsuga menziesii



50' x 30'



Dry; Moist



Full Sun; Part Shade

- E
- B
- M

Provides: Larval food source.
Caterpillar host plant.

Wildlife:



Wild Ginger

Asarum caudatum



1'x 3'



Moist



Part Shade; Full Shade

- E
- B
- M
- g

Provides:

Wildlife: Pest-eating insects. Beneficial insects.



Come back for
more!

Our workshops
cover:



BENEFITS OF NATIVE
PLANTS



WAYS TO ATTRACT
BENEFICIAL WILDLIFE



HOW TO BUILD
HEALTHY SOIL



OUTDOOR WATER
CONSERVATION



CAPTURE, REDIRECT,
REUSE RAINFALL



MANAGE WEEDS
& PESTS



Connect

- Website
- Facebook
- Instagram
- Email list
- Workshops

