



# North Tualatin Mountains Land Use Hearings



Exhibit HH.22

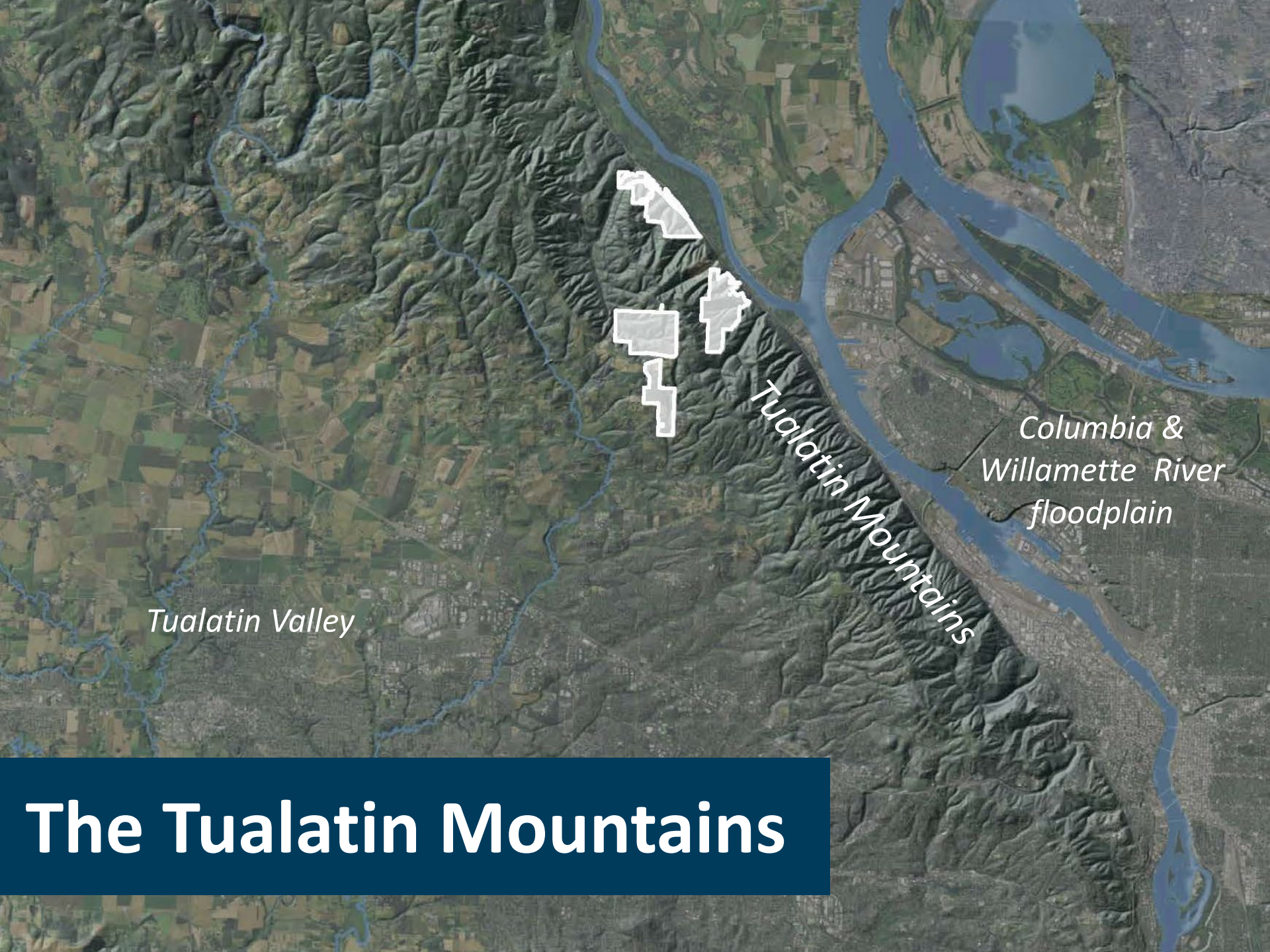
# Our Mission | *Nuestra misión*

Metro Parks and Nature protects water quality, fish and wildlife habitat, and creates opportunities to enjoy nature close to home through a connected system of parks, trails and natural areas.

*El Departamento de Parques y Naturaleza de Metro protege la calidad del agua, el hábitat de peces y vida silvestre, y crea oportunidades para disfrutar la naturaleza cerca del hogar a través de un sistema interconectado de parques, senderos y áreas naturales.*







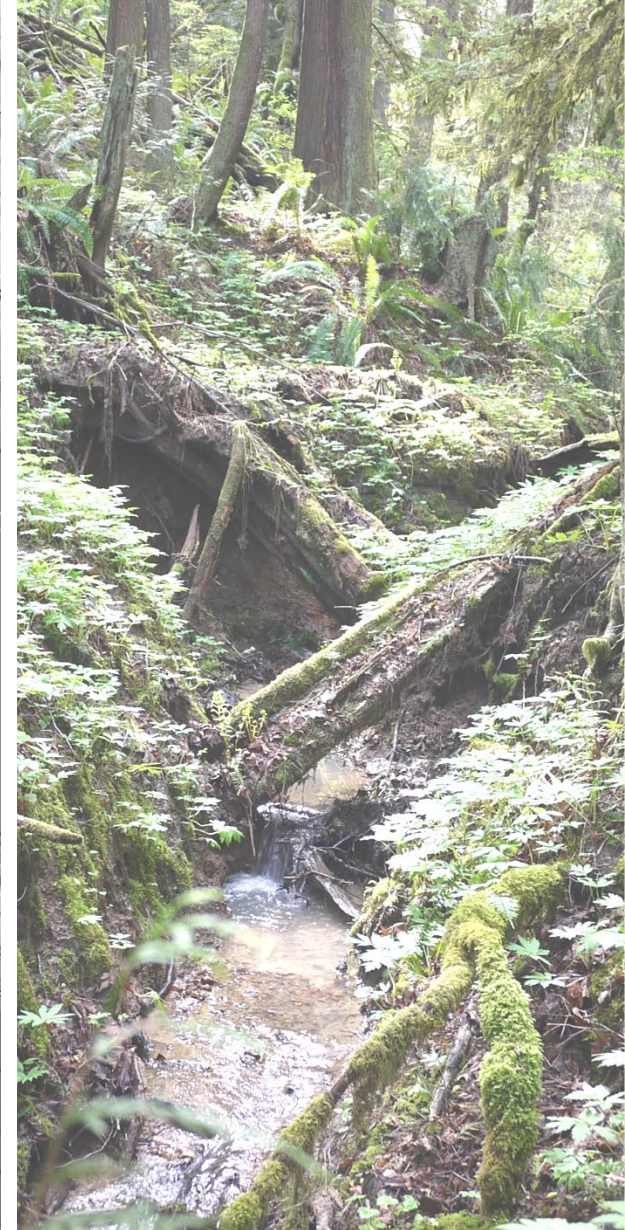
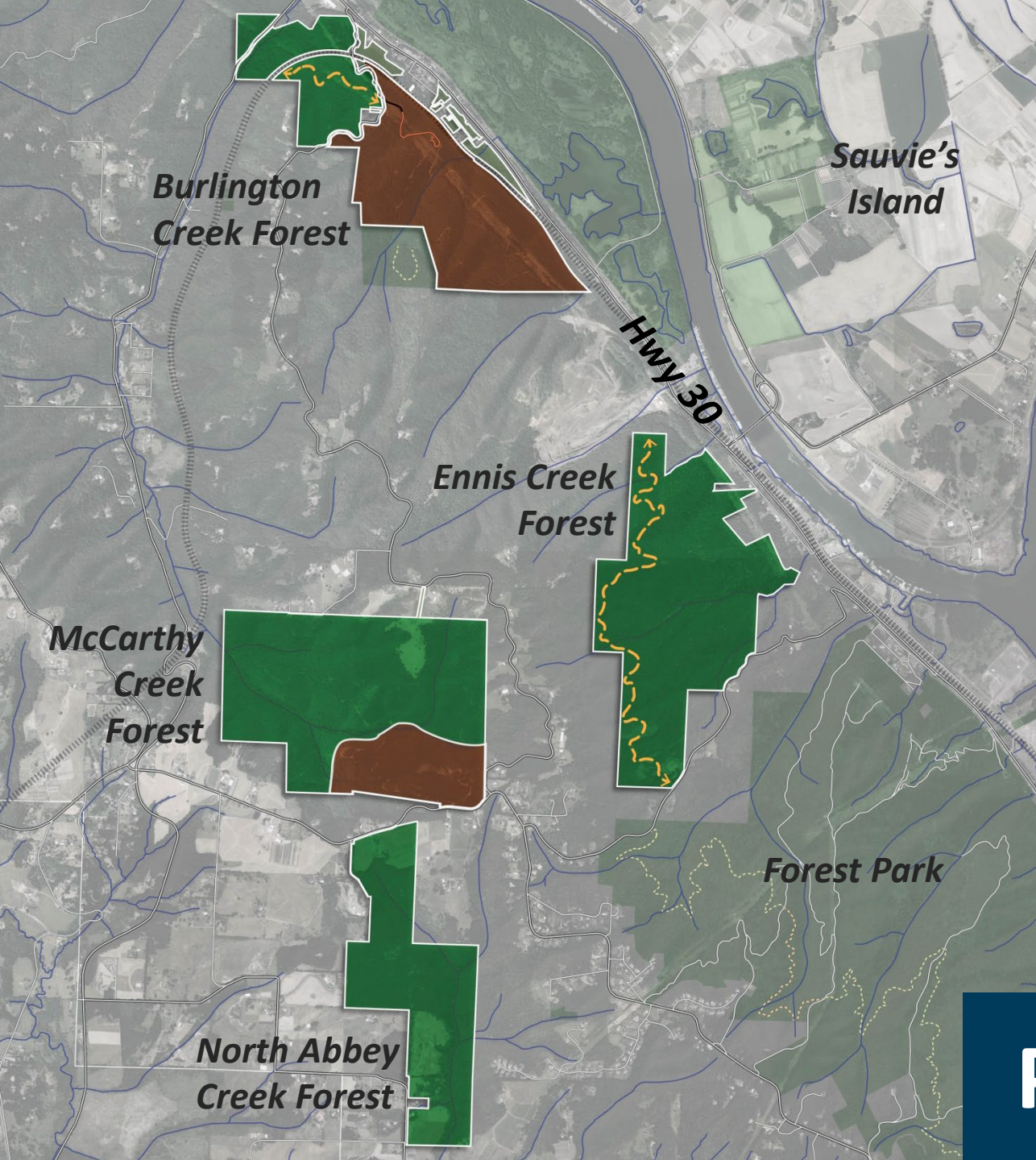
*Tualatin Valley*

*Tualatin Mountains*

*Columbia &  
Willamette River  
floodplain*

# The Tualatin Mountains





**Project Sites**



# Restoration

## Over \$1,500,000 in restoration completed

- *1.3 miles stream restoration*
- *700 acres forest thinning for health*
- *85,000 trees /shrubs planted*
- *Over 4 miles of road decommissioning*
- *Dozens of culverts removed and replaced*

## Additional planned restoration

- *More miles of road decommissioning*
- *More culvert removal and replacement*
- *Continued forest management for habitat*








# Community Engagement



- 
- A photograph of a dense forest with tall evergreen trees. A semi-transparent grey rectangular box is overlaid on the upper half of the image, containing two columns of text. The text is in a black, italicized serif font.
- *Forest Park Conservancy*
  - *Forest Park Neighborhood Association*
  - *Northwest Trails Alliance*
  - *Oregon Dept of Forestry*
  - *Oregon Recreation Trails Advisory Committee*

- *Portland Community College*
- *Portland Parks & Recreation*
- *Skyline Ridge Neighbors*
- *Skyline School*
- *Trackers Earth*
- *West Multnomah Soil and Water Conservation District*

# Stakeholder Advisory Committee

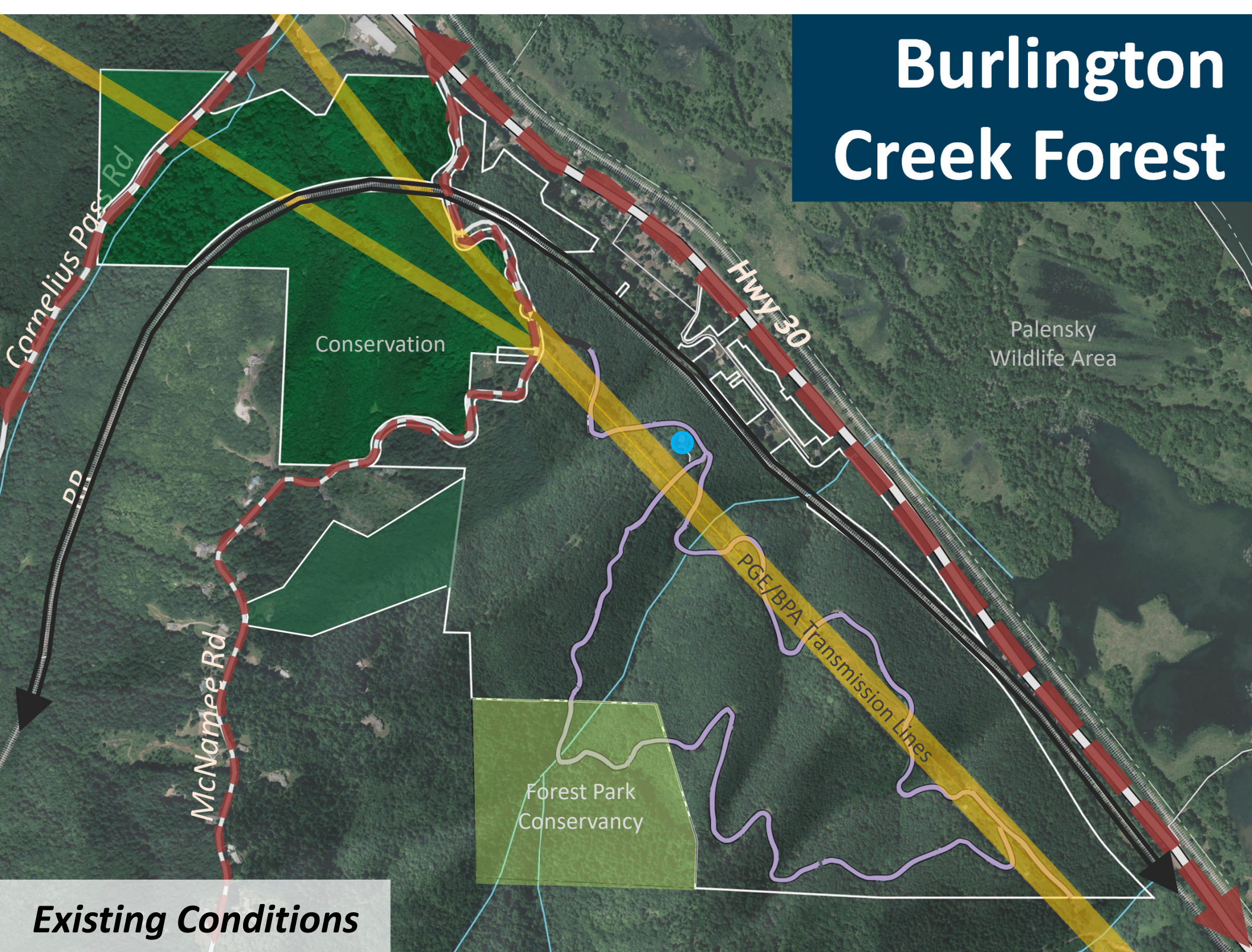




**Nature for All**

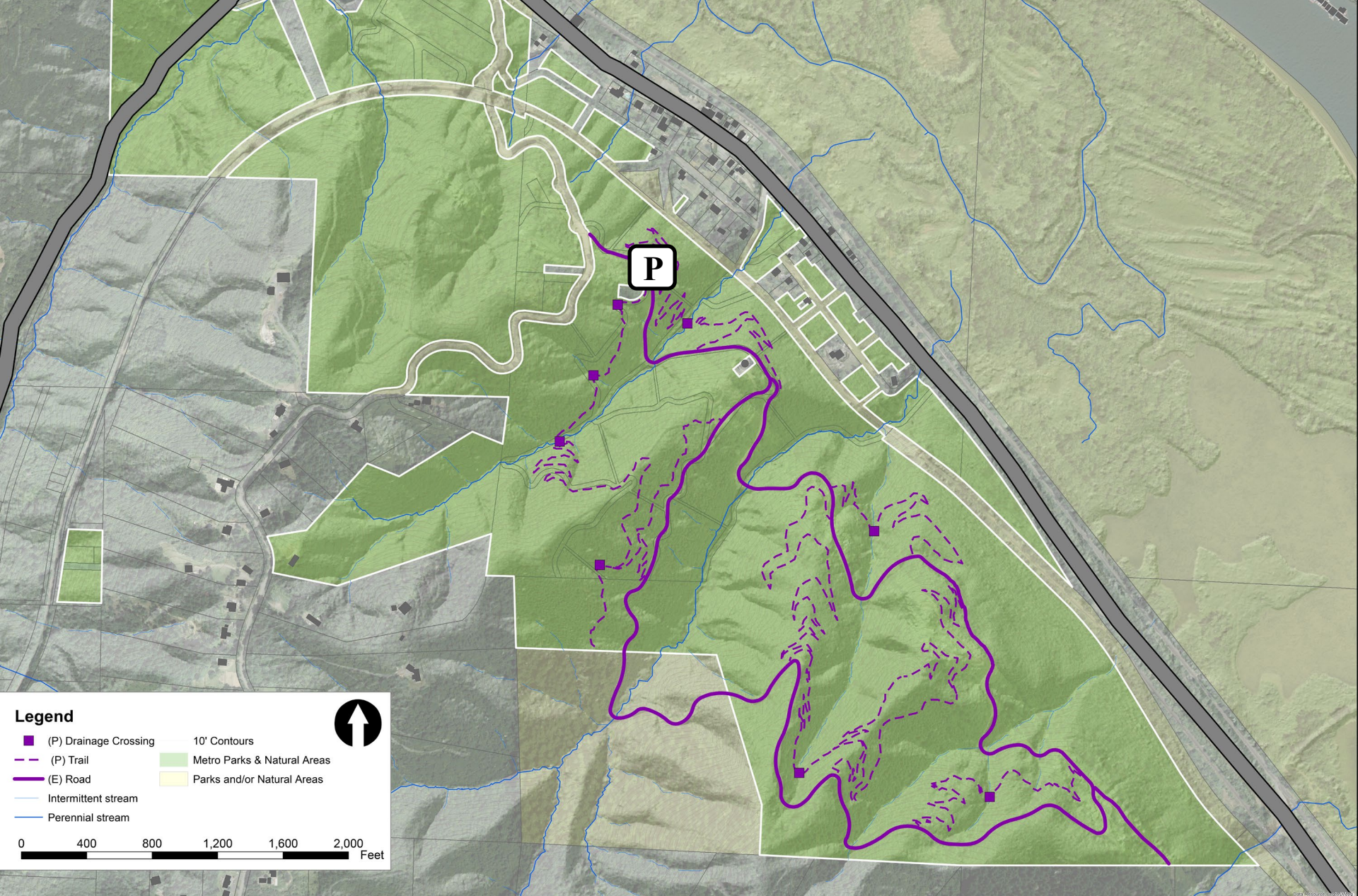


# Burlington Creek Forest



**Existing Conditions**



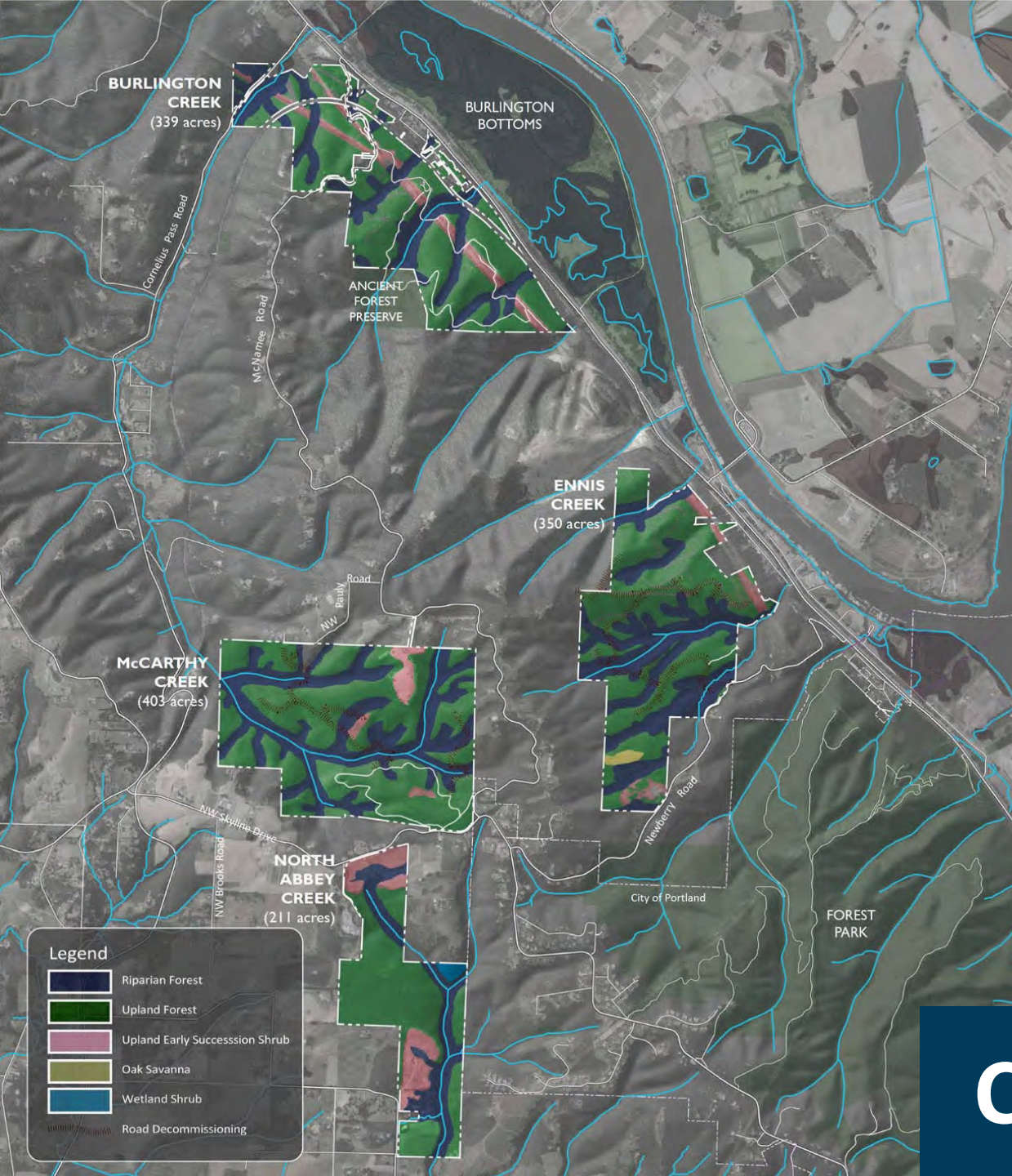


# Proposed Trail Development









# Conservation





**Protecting Wildlife and Water Quality**





**Site Management and Recreation Ecology**





# Site Management and Recreation Ecology





Thank you