



Multnomah County Deflection Update

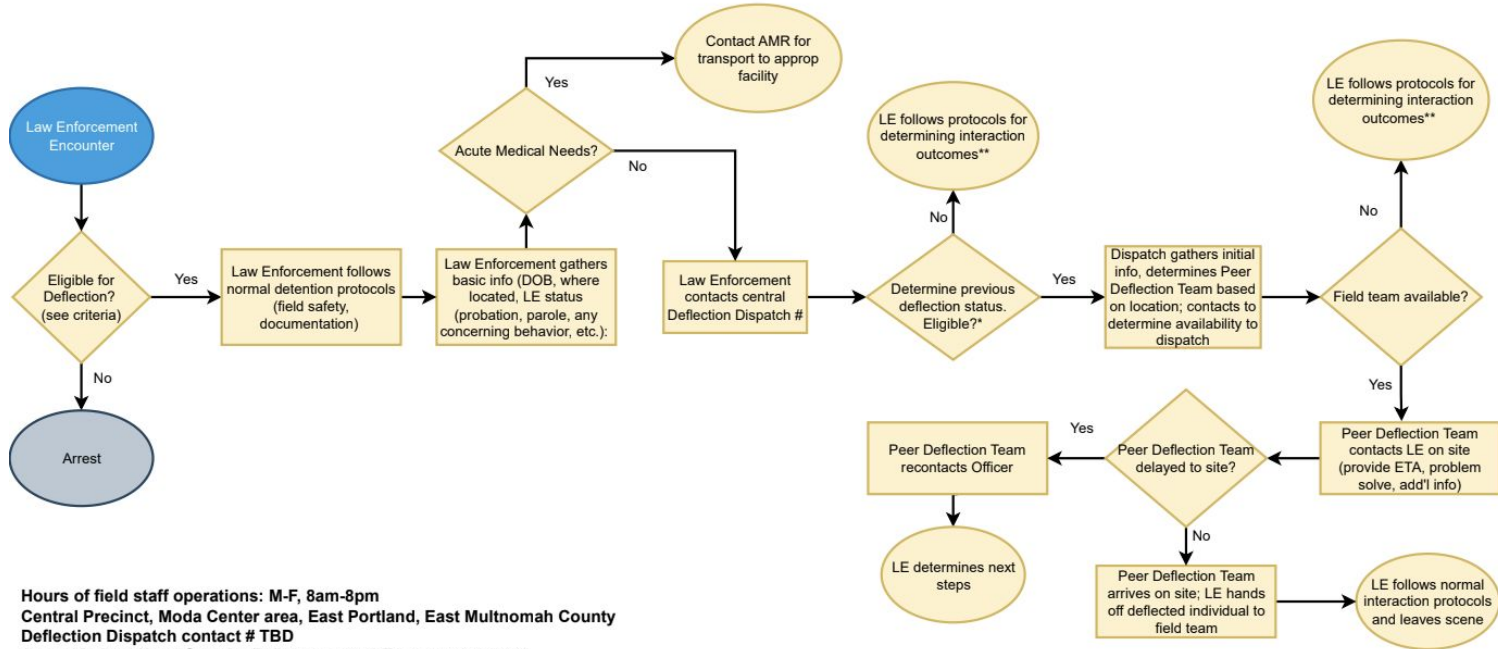
Community Based Deflection

Community Based Deflection Peer Services will be:

- Monday - Friday 8 am - 8 pm, and available Sunday September 1
- Focus on Central Precinct, the MODA Center area, East Portland and East Multnomah County in order to arrive in a reasonable response time in areas of high need. Deflection will be available outside of those areas but may have longer wait times.



**Community-based Deflection - Law Enforcement Workflow
for September 1, 2024 start**



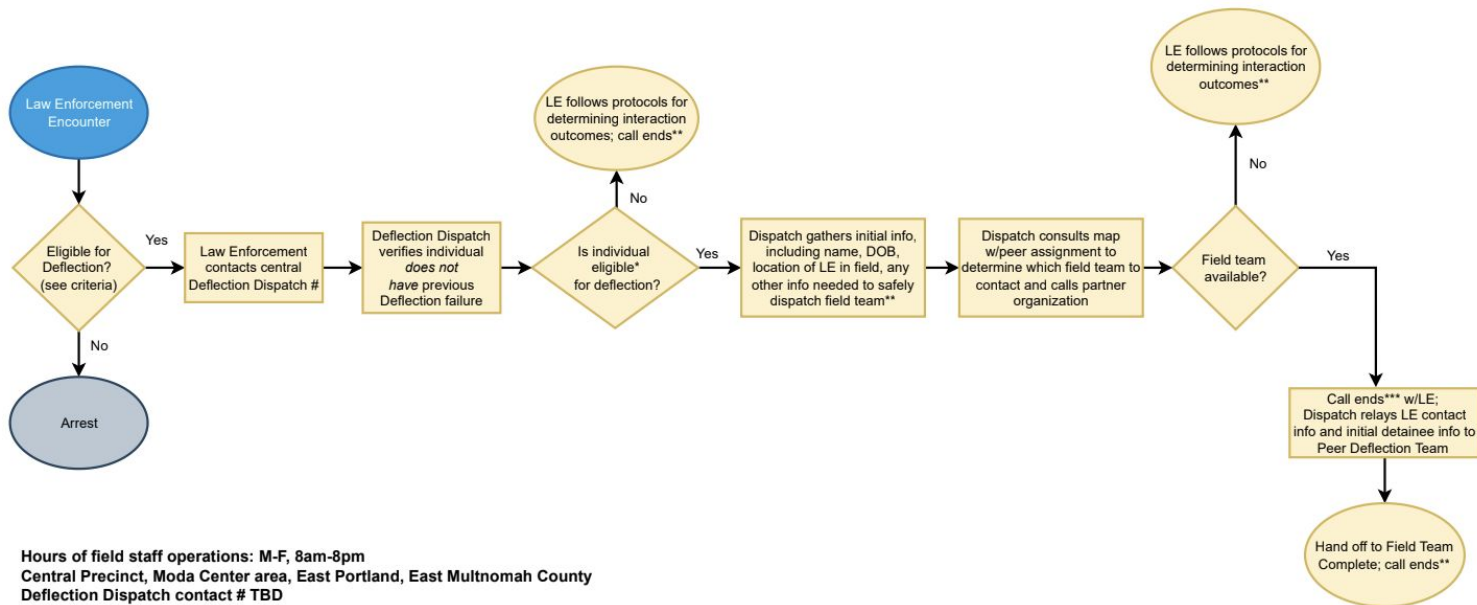
Hours of field staff operations: M-F, 8am-8pm
Central Precinct, Moda Center area, East Portland, East Multnomah County
Deflection Dispatch contact # TBD
Acute Medical Need Criteria: Follow current LE agency protocol

* Eligible for deflection if no unsuccessful deflections w/in last 30 days
 ** including arrest, cite/release as well as reporting, documentation, etc.

DRAFT



**Community-based Deflection Workflow (Dispatch)
for September 1, 2024 start**



Hours of field staff operations: M-F, 8am-8pm
Central Precinct, Moda Center area, East Portland, East Multnomah County
Deflection Dispatch contact # TBD

* Eligible for deflection if no unsuccessful deflections w/in last 30 days
 ** Protocols for LE and dispatch documenting interaction TBD

DRAFT



Law Enforcement Protocols

To determine deflection eligibility, Law Enforcement shall determine the following:

- The person is in possession of a small amount of a controlled substance and has been or could be arrested for misdemeanor possession of a controlled substance with no additional charges, warrants or holds;
- If the individual is on community supervision (Parole, Post-Prison Supervision, Probation), the officer will call Recog and determine whether the Parole/Probation Officer will be placing a detainer.



Law Enforcement Protocols Continued

- The person does not obviously require immediate medical attention based upon current Law Enforcement protocol;
- The person is not a danger to themselves or others, is not actively talking about harming themselves and/or is unable to understand basic instructions and agree to Deflection
- The person is able to respond to verbal prompts;
- The person is 18 years of age or older;
- The person is willing to initiate the deflection process in lieu of booking.



DRAFT

Multnomah County Deflection Program



PHASE 1 COORDINATED CARE PATHWAY CENTER

Journey Map

This visual illustrates the journey and pathways to the Coordinated Care Pathway Center and connections to treatment and recovery support.

Who is eligible?

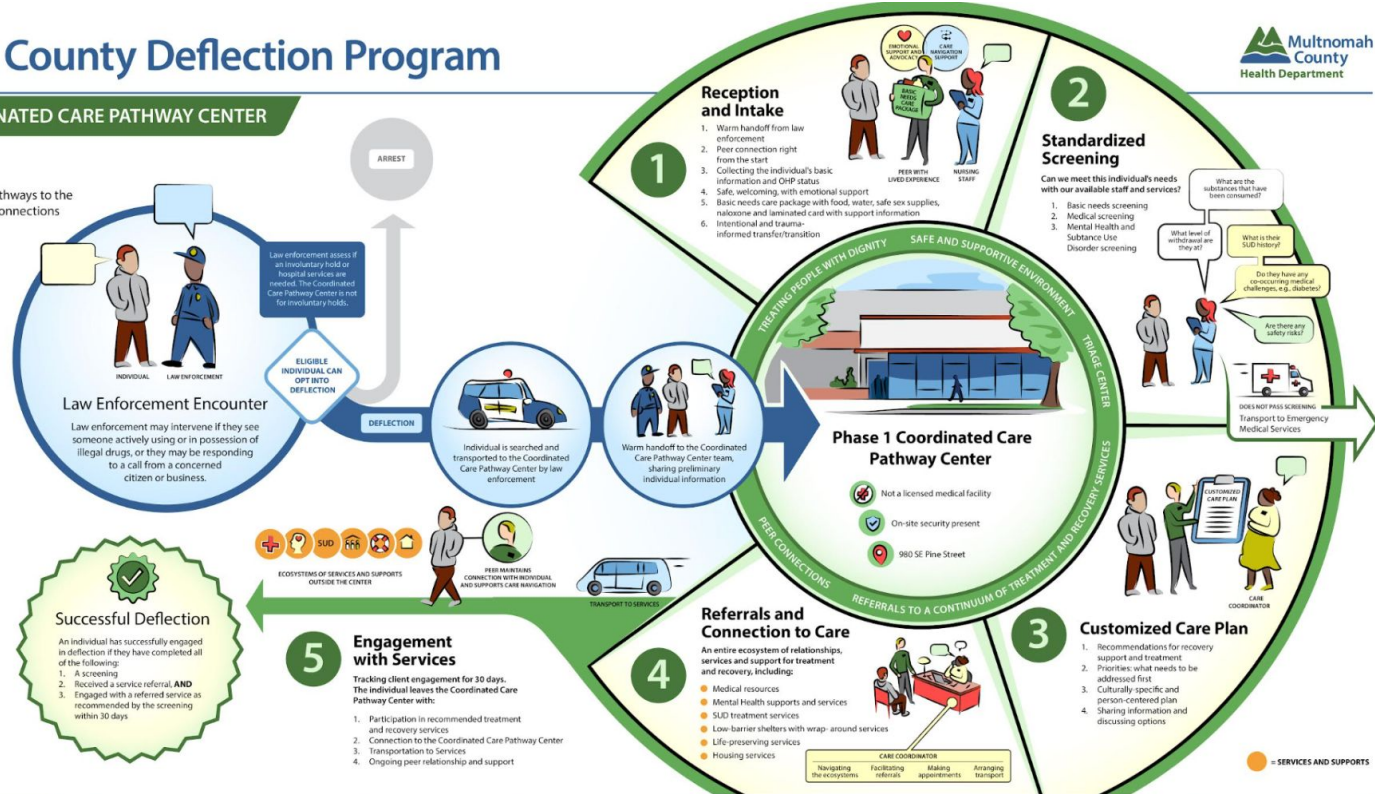
Eligible individuals are those who:



- ✓ Come into contact with law enforcement **AND**
- ✓ Are found to be in possession of small amounts of illegal drugs for their personal use **AND**
- ✓ Are not committing any other crimes **AND**
- ✓ Have not had an unsuccessful deflection within the last 30 days.



- ✓ Individuals may have a substance use disorder, another behavioral health disorder or co-occurring disorders



Deflection program principles



Collaborative effort between law enforcement and behavioral health



Person-centered



Data-Driven and Evidence-based



Trauma-informed



Culturally and linguistically responsive



Continuous learning and improvement



Community Engagement

DRAFT Multnomah County Deflection Program

PHASE 2 COORDINATED CARE PATHWAY AND SOBERING CENTER

Journey Map

This visual illustrates the journey and pathways to the Coordinated Care Pathway Center and connections to treatment and recovery support.

Who is eligible?

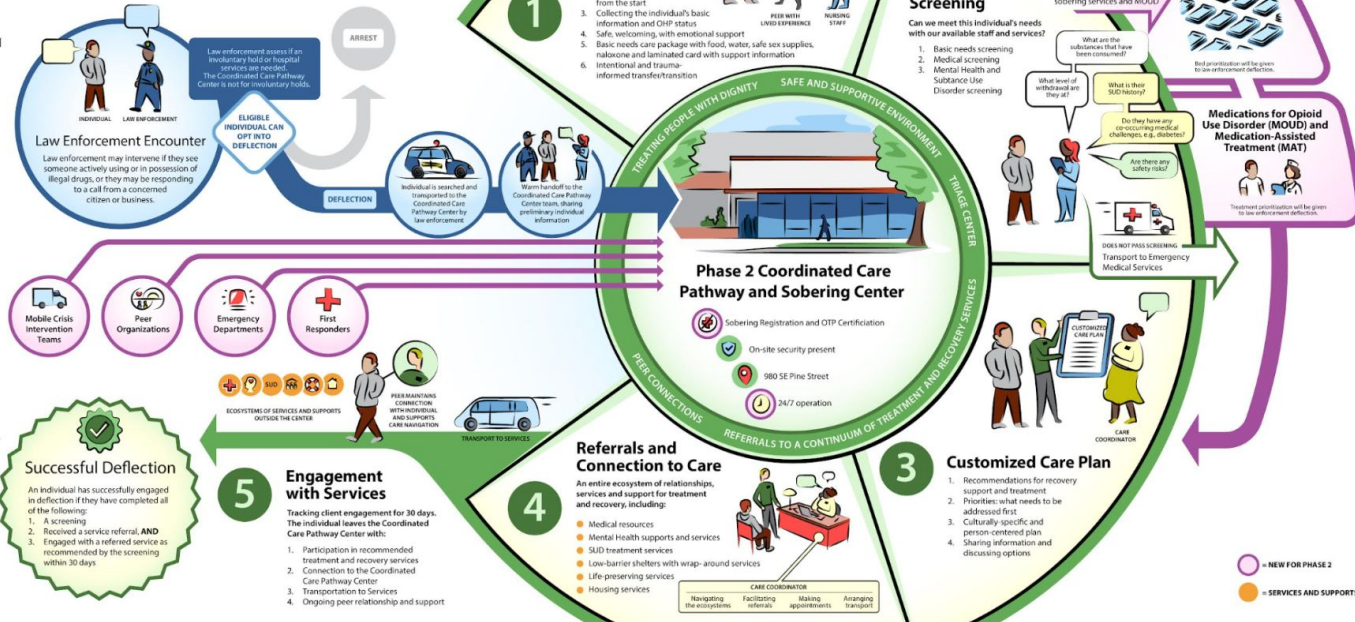
Eligible individuals are those who:



- ✓ Come into contact with law enforcement **AND**
- ✓ Are found to be in possession of small amounts of illegal drugs for their personal use **AND**
- ✓ Are not committing any other crimes **AND**
- ✓ Have not had an unsuccessful deflection within the last 30 days.



- ✓ Individuals may have a substance use disorder, another behavioral health disorder or co-occurring disorders



Deflection program principles

- Collaborative effort between law enforcement and behavioral health
- Person-centered
- Data-Driven and Evidence-based
- Trauma-Informed
- Culturally and linguistically responsive
- Continuous learning and improvement
- Community Engagement

Transportation

- Mobile crisis teams
- Non-emergent medical transportation contract
- Existing transportation contracts



Security

- **Training for security officers**

- Listing of standard training for Security Officers to maintain with the contract partner.
- Anticipate a joint specialized training in coordination with the contract partner August 26, 2024.

- **Experience of security officers**

- Selected several experienced officers from existing programs (similar in scope to the Coordinated Care Pathway Center) to transfer. This will bring experienced officers to the Pathway Center and allow veteran officers to be paired with less seasoned officers. Additionally, the vehicle patrol assigned to the sector includes the senior Lieutenant officer on shift.





Thank You