



# Multnomah County

West Hills Road Projects Update

NW Germantown Rd.  
NW Newberry Rd.  
NW Cornelius Pass Rd.

October 8, 2018  
Skyline Elementary School

## **MULTNOMAH COUNTY**

Mike Pullen  
Carrie Warren  
Storm Beck  
Alma Pradeepan

## **MURRAYSMITH**

Gabe Crop  
Tyler Nord

# Agenda

- NW Germantown Road Slide Repair Update
  - Project description
  - Schedule and traffic plan
- NW Newberry Road Slide Repair Update
  - Project description
  - Schedule and traffic plan
- NW Cornelius Pass Road Safety Improvement Update
  - Jurisdiction transfer to ODOT
  - Project description
  - Schedule and traffic plans
- Questions / Comments



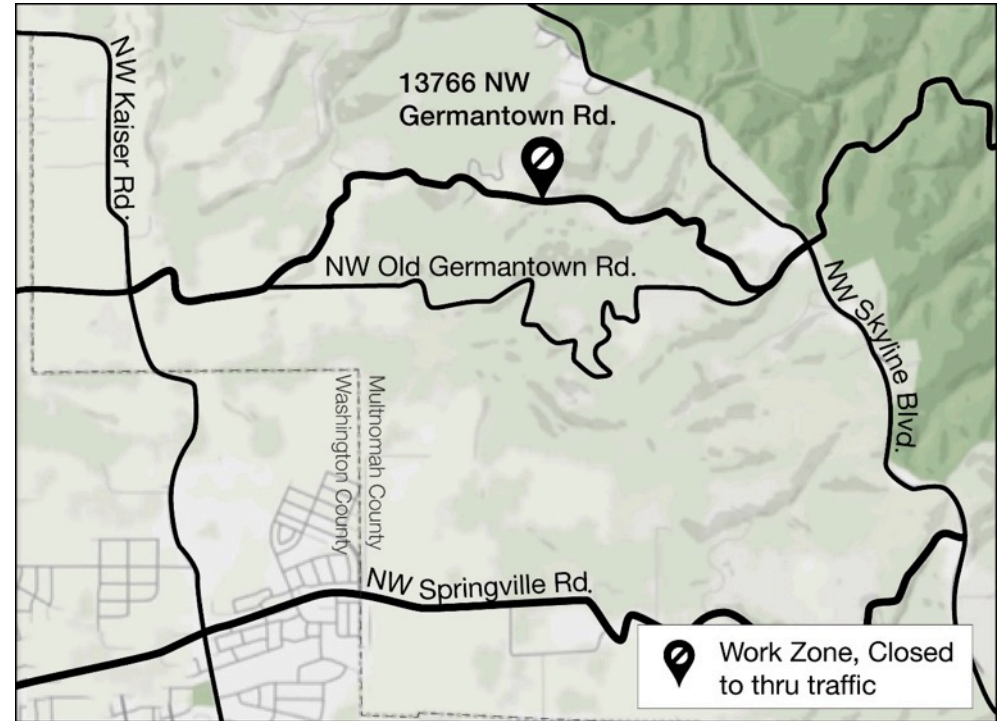
## NW GERMANTOWN ROAD // Slide Location and Damage Description

### Project Location

- 13766 NW Germantown Rd.
- Between Skyline Blvd. & Kaiser Rd.

### Project Description

- Failed culvert
- Undermined slope on downhill side
- Loss of shoulder



### Project Plan

- Close road
- Replace culvert
  - Increase diameter from 18 to 36 inches
  - Include erosion control rocks at either end
- Repair slope
- Realign road away from slide







# NW Germantown Road Questions

**For more information:**

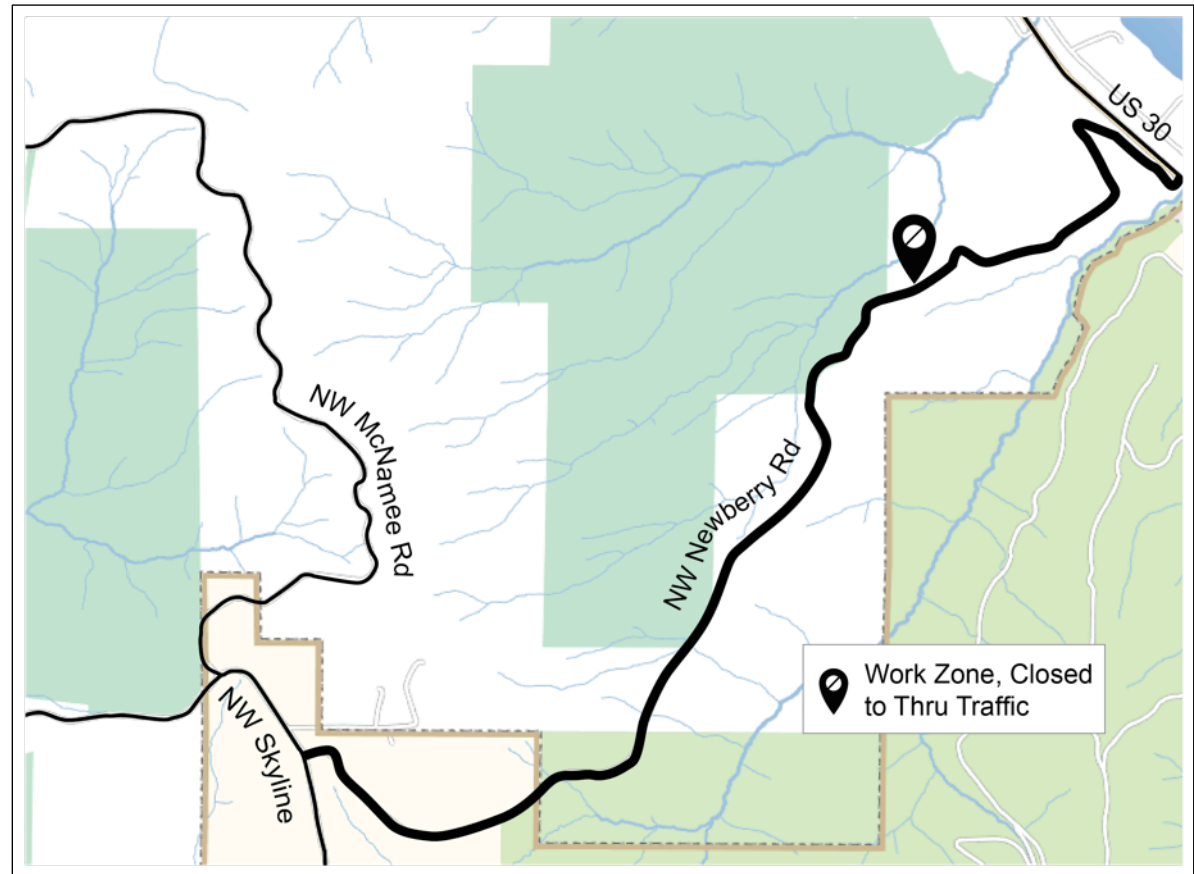
**Web:** [multco.us/germantown](http://multco.us/germantown)

**Twitter:** @MultCoRoads

## NW NEWBERRY ROAD // Slide Location

### Project Location

- Near 13342 NW Newberry Rd.
- Between Skyline Blvd. & US30





## Project Description

- Large landslide undermined road following snowstorm
- Road has been closed since January 2017





### Project Plan

- Road will remain closed to all users
- Temporary water management
- Retaining wall contain all weather backfill
- Rebuild and pave road



## NW NEWBERRY ROAD // Repair Plan

Example of reinforced retaining wall to be used in project



Example of Hot-Dip Galvanized Welded Wire Wall. Photo of the Hilfiker Retaining Wall at Evergreen Road Bridge Replacement. Photo Source: <http://projects.hilfiker.com/WWW/i-tkrF7zT/>

## **Construction Schedule**

- Work begins November 2018 *after* Germantown
- Road open to traffic late March 2019
- Final paving in May 2019

## **Traffic Plan**

- Road to remain closed during construction
- Local traffic will have access up to slide area on both sides
- NW Cornelius Pass used as alternate route





# NW Newberry Road Questions

**For more information:**

**Web:** [multco.us/newberry](http://multco.us/newberry)

**Twitter:** @MultCoRoads

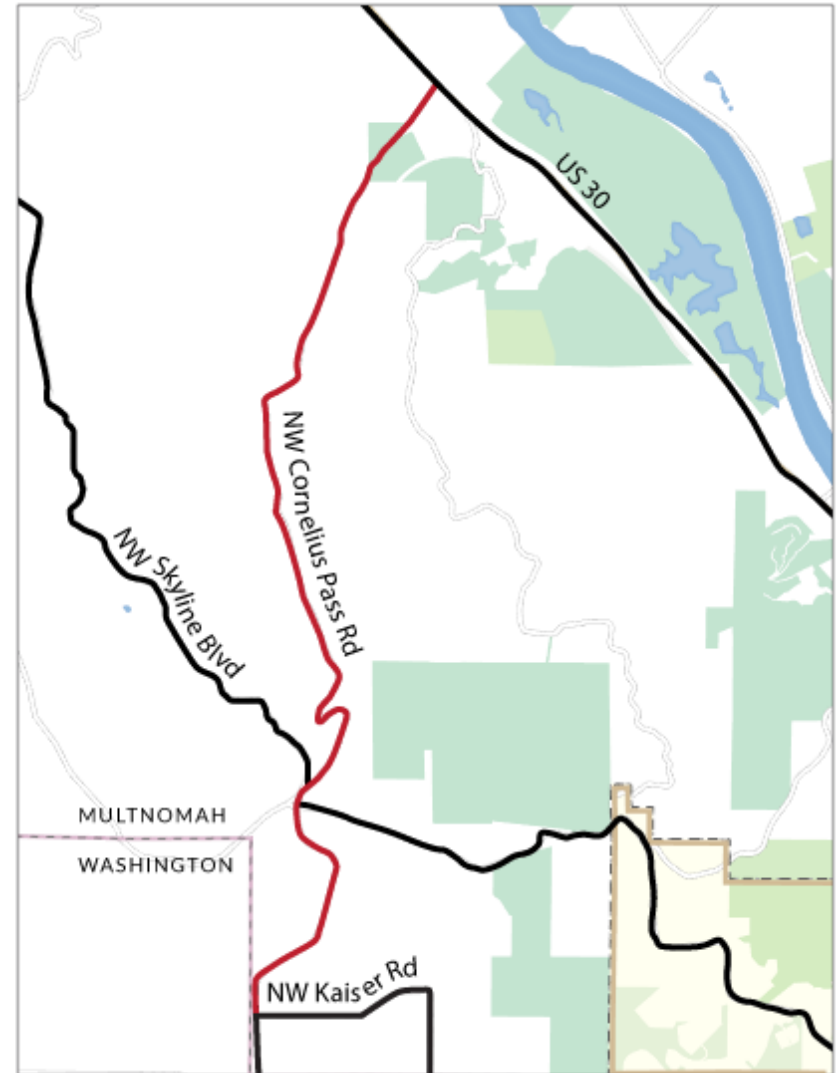
## Cornelius Pass Road Transfer

- HB2017 transfers Cornelius Pass Road between US26 and US30 from Washington and Multnomah Counties to ODOT
- Timing of transfer will be after completion of current project, no firm date yet
- ODOT is currently gathering information about the road
- Multnomah County in process of sharing available information



### Project Description

- Safety improvements are needed to Cornelius Pass Rd between Highway 30 and NW Kaiser Rd
- The Oregon Legislature allocated funding to Multnomah County for the enhancements
- Landslides on alternate routes delayed project



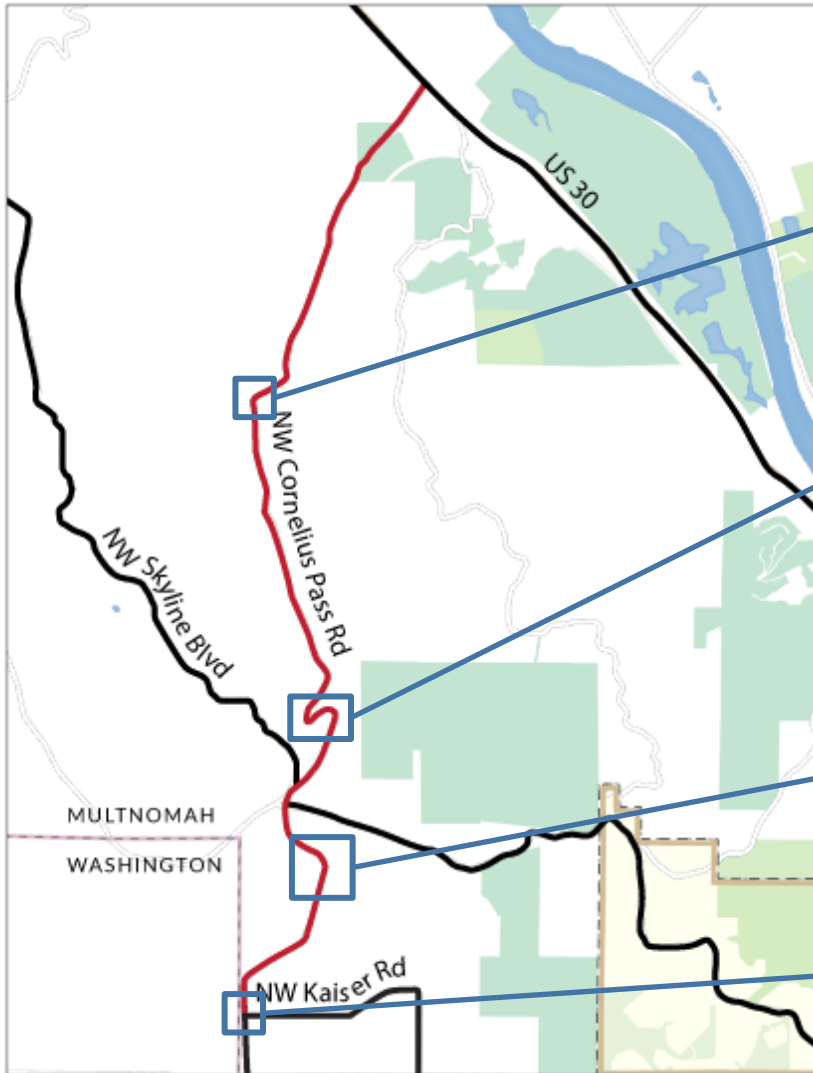


### Corridor-Wide Improvements

- Signage
- Vehicle pullouts
- Barriers and guardrails
- Reduce pavement drop-offs with gravel shoulder wedge



## NW CORNELIUS PASS ROAD // Project Details and Locations



- **8<sup>th</sup> Ave** minor curve realignment and shoulder widening

- **“S” curves** reconstruction and realignment

- **Curves south of Plainview Rd** signage and sight distance improvements

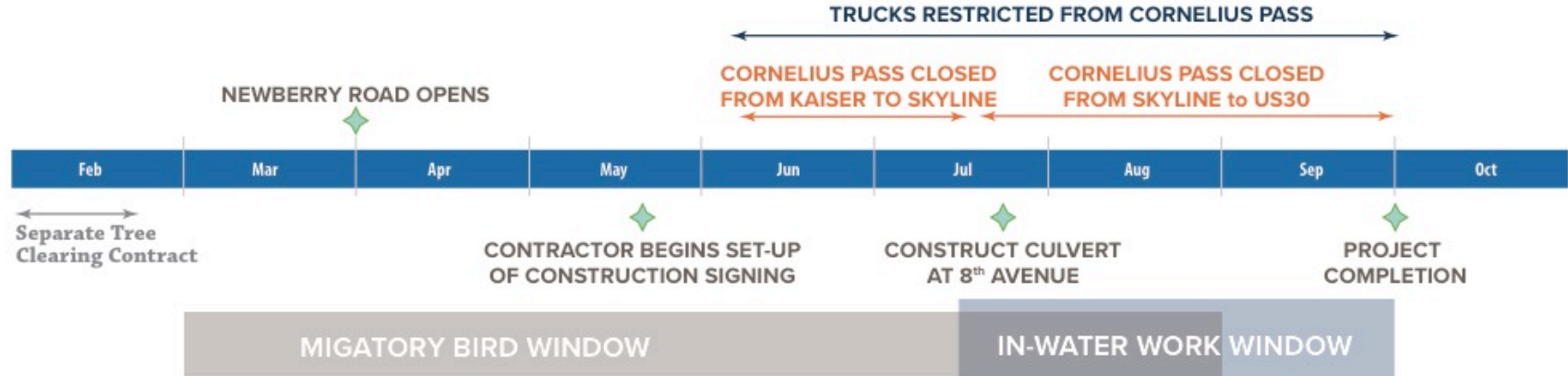
- **Kaiser Rd** signage, sight distance, and shoulder widening



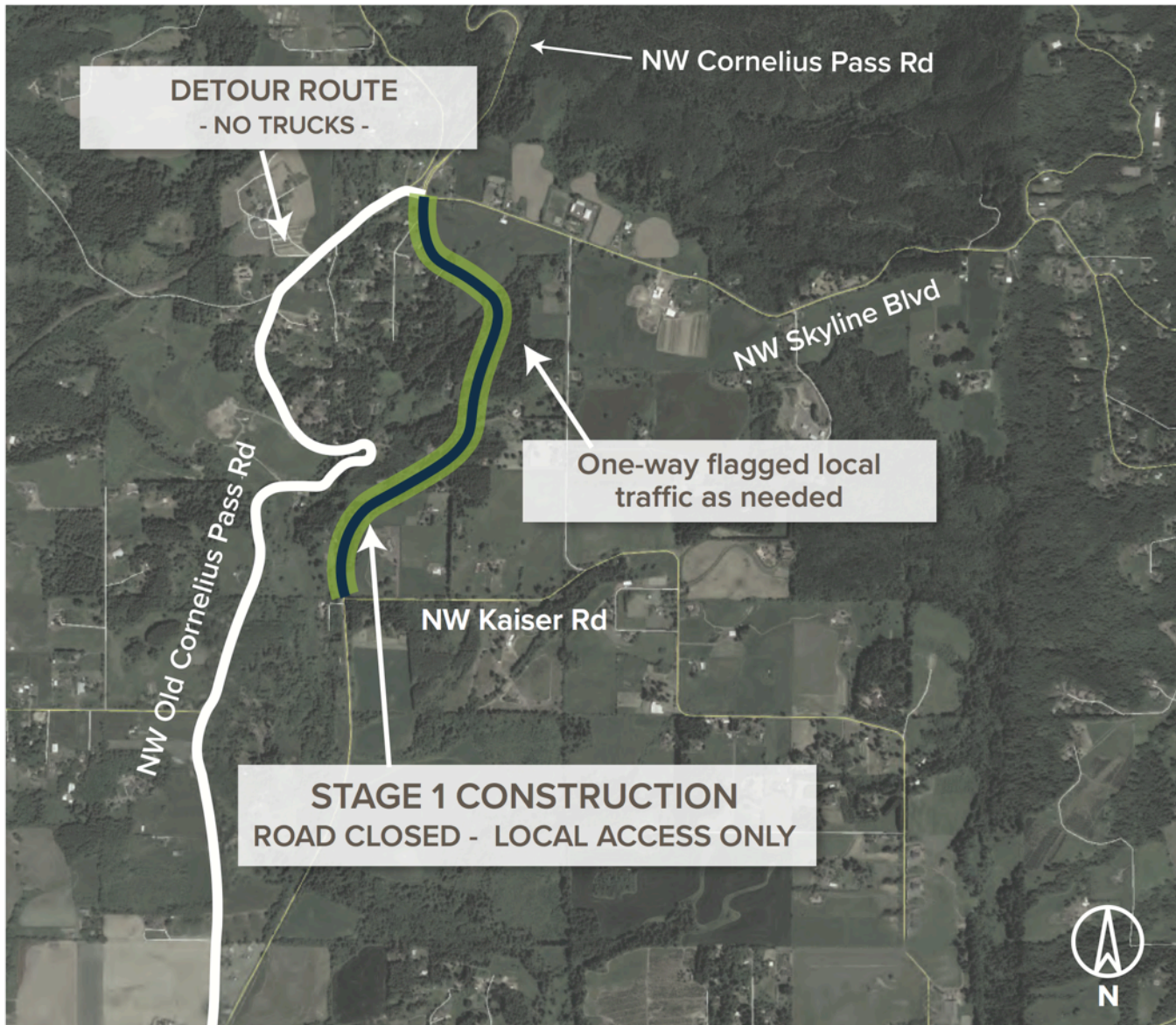


# NW CORNELIUS PASS ROAD // 2019 Construction Stages and Timelines

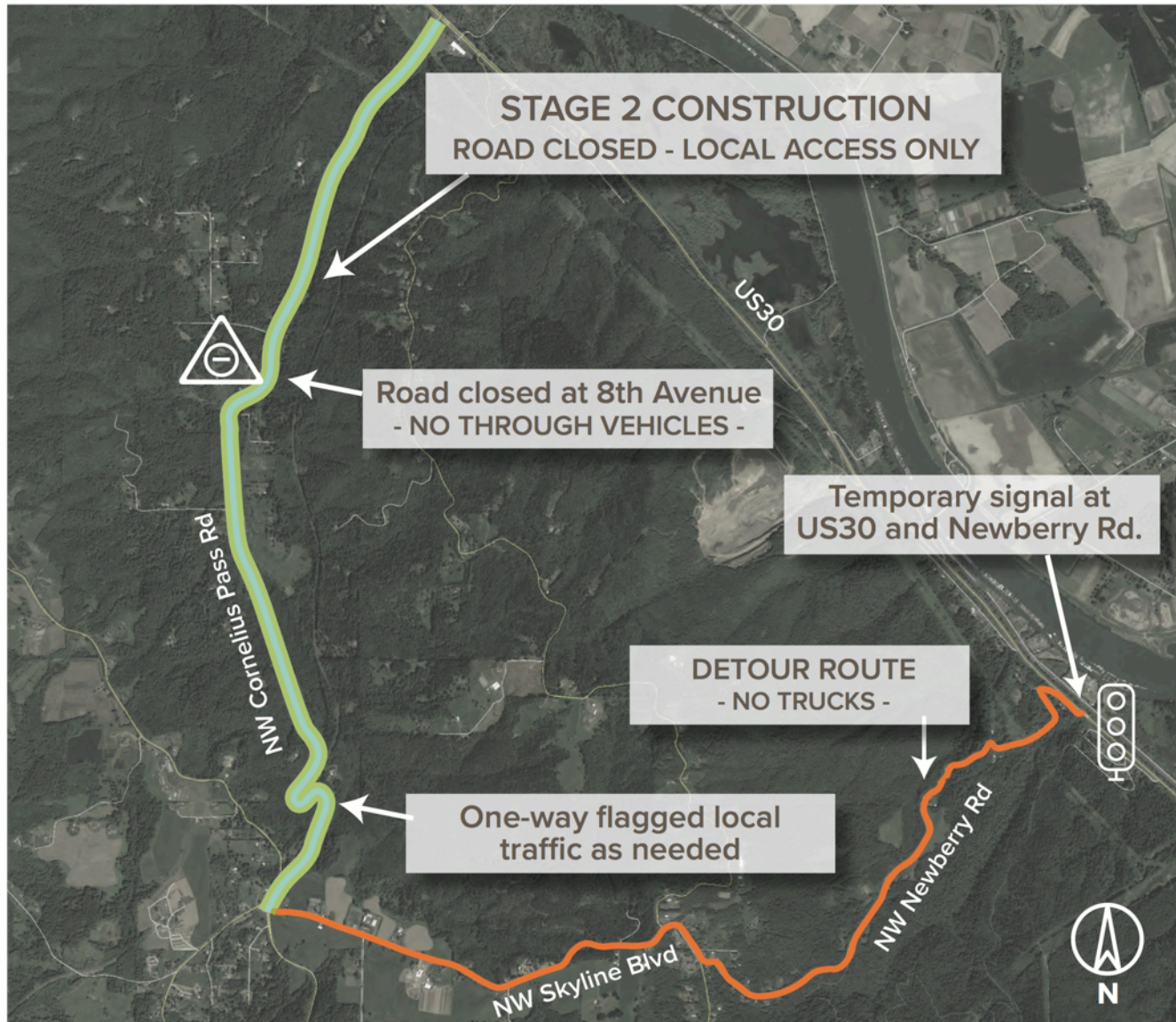
## NW CORNELIUS PASS ROAD CONSTRUCTION SCHEDULE



# NW CORNELIUS PASS ROAD // Stage 1 Traffic Plan



# NW CORNELIUS PASS ROAD // Stage 2 Traffic Plan



## Detour Plan

- Outreach to freight, Washington and Columbia counties
- Pre-construction public meeting: Spring 2019
- Other issues/actions needed?





# NW Cornelius Pass Road Questions

**For more information:**

**Web:** [multco.us/cornpass](http://multco.us/cornpass)

**Twitter:** @MultCoRoads