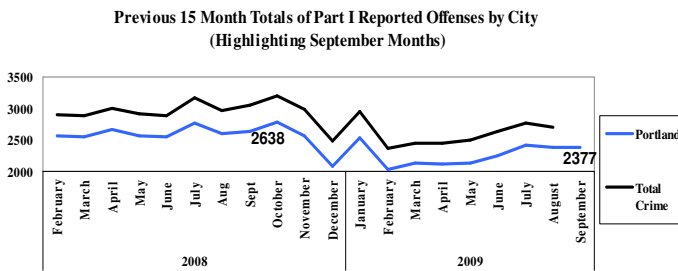


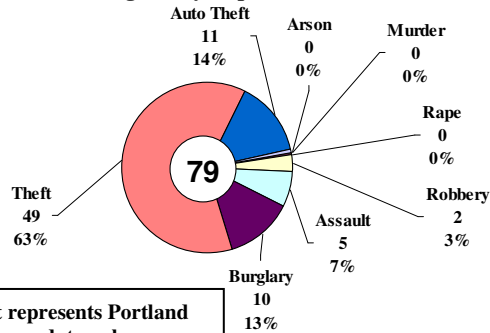
SAFETY PRIORITY BRIEF: SEPTEMBER 2009

Multnomah County: Reported Index Offenses



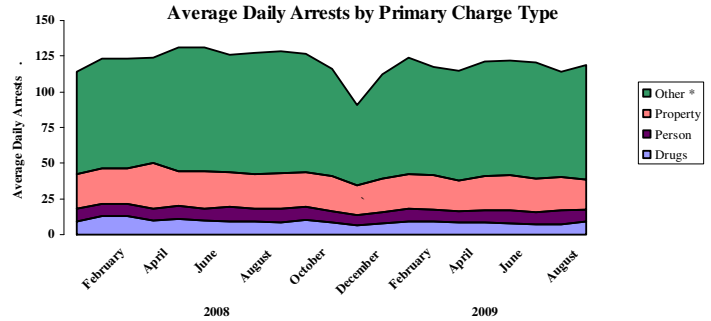
* Includes data retrieved from PPB and GPD monthly reports. Source: DSS-J, October 15, 2009. At the time of publication, Gresham Offense data was not available.

Average Daily Reported Index Offenses



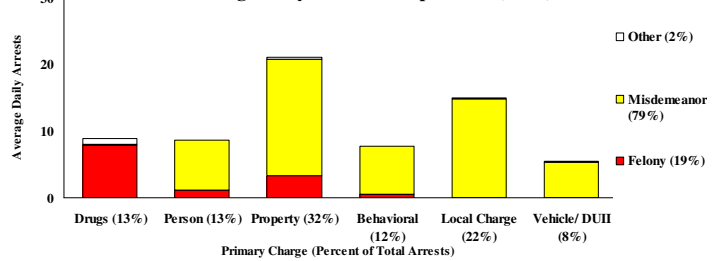
This chart represents Portland Police Bureau data only.

Multnomah County: Portland Arrests



* Fugitive/warrant charges, behavioral and vehicular arrests and violations of local ordinances. PPB data only. Source: DSS-J, October 19th, 2009.

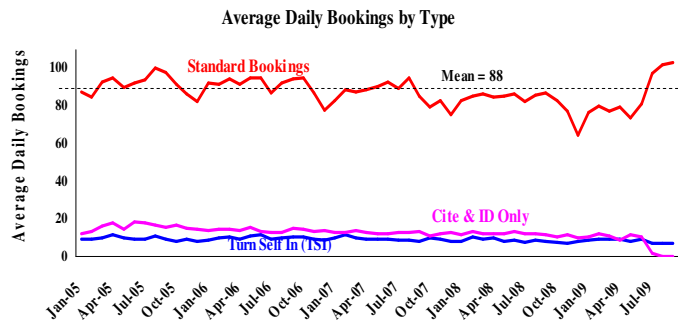
Average Daily Arrests*: September (n=93)



*There were 2781 arrests in September.

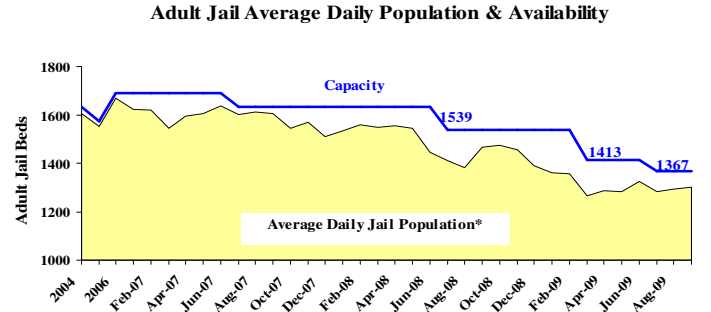
From now on, warrants previously categorized as 'other' will be listed under felony arrests.

Sheriff: Bookings



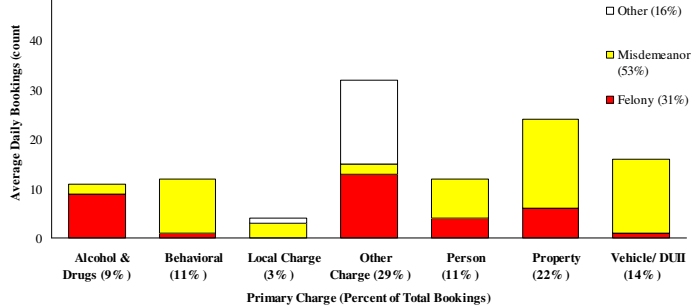
Source: DSS-J, October 20th, 2009.

Sheriff: Custody- Adult Jail Beds



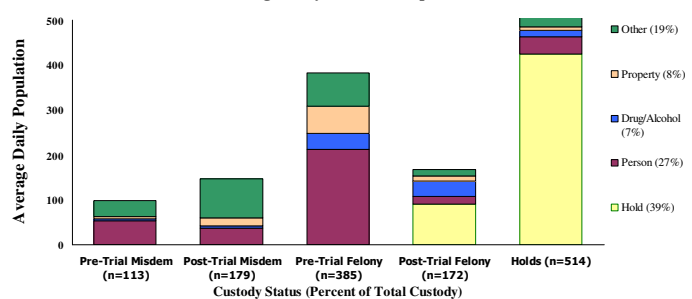
*Excludes in-transit custody classifications. The MCSO reported 16 matrix releases for September 2009. Source: DSS-J, October 20th, 2009.

Average Daily Bookings by Severity*: September (n=110)



* Total of 3300 bookings (110/day) through 09/30/2009. Corrections Health reported 765 psych-alerts (25.5/day) for the entire month of September.

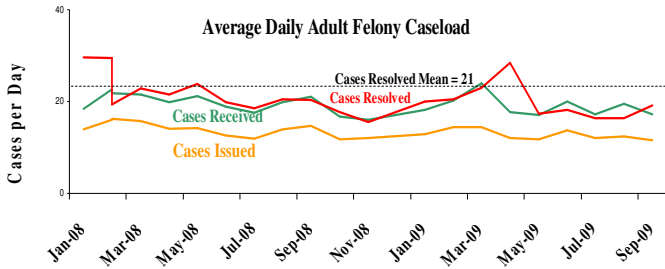
Average Daily Bed Use: September (n=1325)



Average Daily Jail System Capacity=1367. Average Daily Population (ADP)=1325 Range = 1230 to 1355.

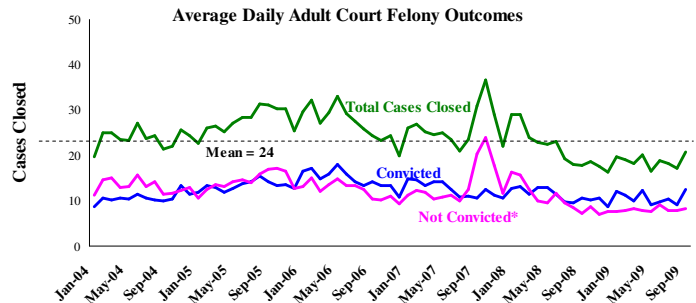
Notes: Overall, Portland Reported Offenses have decreased 26% from October 2008. In September, Average Daily Standard Bookings increased for the third month in a row to 103 per day. The Adult Jail Beds Utilization Rate has increased every month since May, currently at 95.1%. A total of 92 inmates have been emergency released in the last four months, 16 in September. In September, the Average Length of Stay(ALS) in the jails was 11.59 days, again reaching the shortest average length of stay calculated for at least five years of data collection.

District Attorney: Adult Felony Caseload



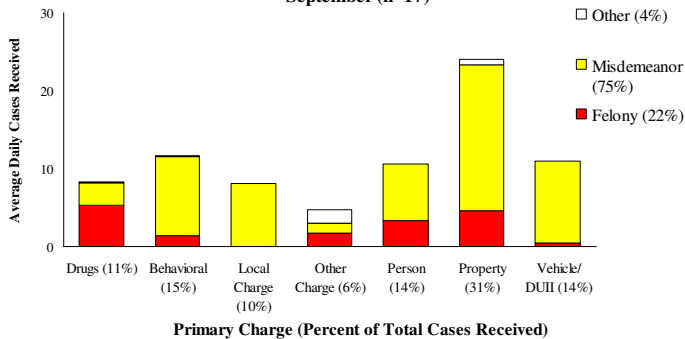
Source: DSS-J, October 22, 2009

Court Processes: Sentencing Outcomes



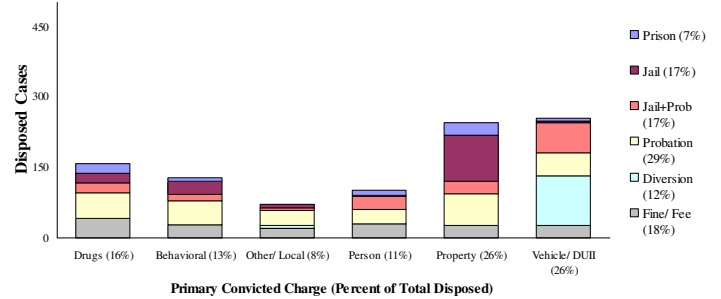
*Includes dismissed cases (typically 'no complainant') and cases found not guilty. Adult felony cases only. Source: DSS-J, October 19th 2009.

Felony and Misdemeanor Average Daily Received Cases*: September (n=17)



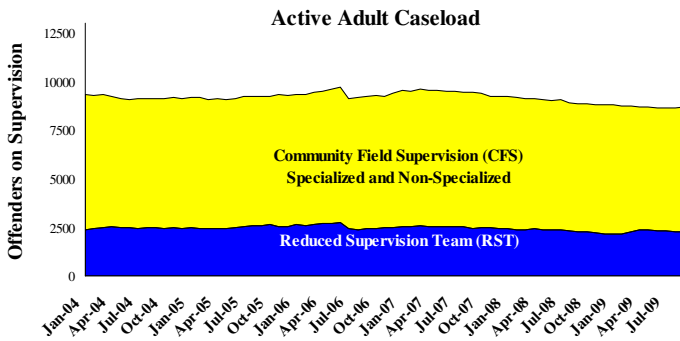
*September had 516 received felony cases, 577 felony cases were resolved in September.

Felony and Misdemeanor Sentences by Primary Charge*: September 2009



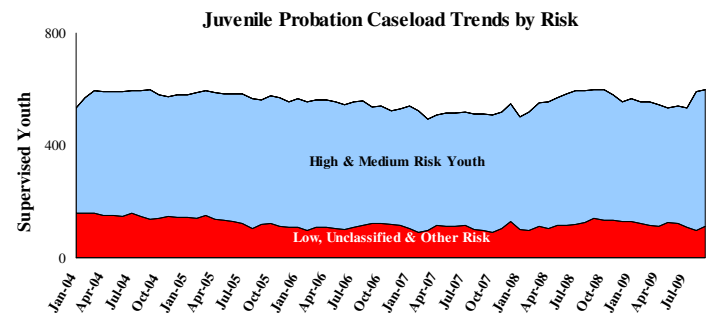
*Primary conviction charge is the most serious charge with a conviction and may differ from the original primary charge. September had 1962 convictions; 19% were felonies.

Adult Community Supervision: Caseloads



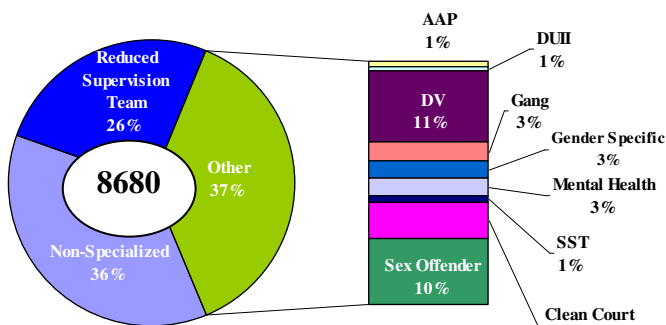
*Source: DCJ Research and Evaluation Unit, October 10th, 2009.

Juvenile Community Supervision: Caseloads



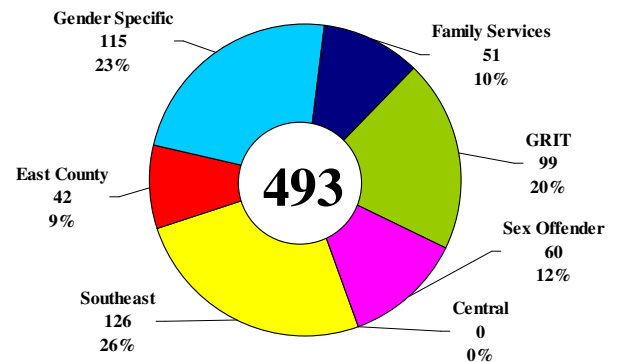
Source: Department of Community Justice Juvenile Services Division, October 17th 2009.

Adult Active Caseload by Type*: September 2009



*Less than 1% are "other" cases which have been included as non-specialized.

Juvenile Justice Caseload by Unit*: September 2009



*The average caseload per counselor was 21.6 for September.

Notes: Total Cases Closed increased by 21% and the number of Case Convictions increased 35% between August and September. Overall, the Juvenile Probation caseloads are decreasing, while at the same time the high and medium risk caseloads are increasing and low risk caseloads are decreasing.

Questions or Comments? Please contact safetybrief@co.multnomah.or.us.