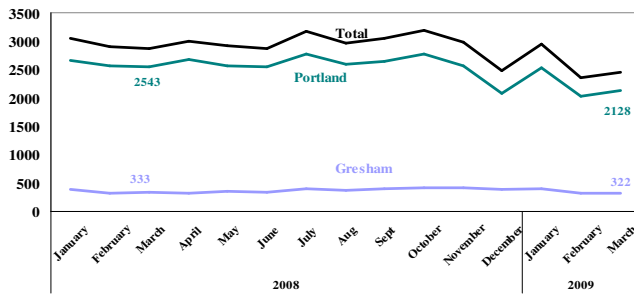


SAFETY PRIORITY BRIEF: MARCH 2009

Multnomah County: Reported Index Offenses

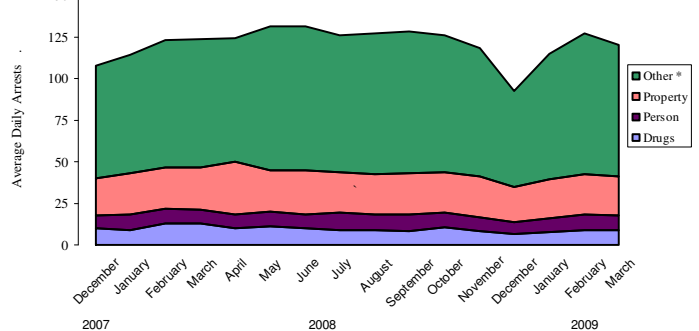
Previous 15 Month Totals of Part I Reported Offenses by City
(Highlighting March Months)



* Includes data retrieved from PPB and GPD monthly reports, downloaded April 24, 2009.

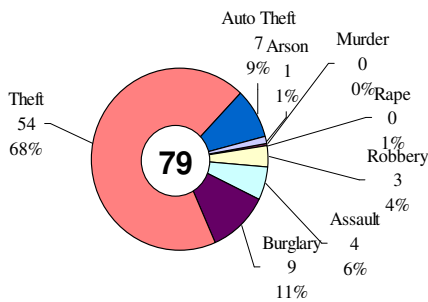
Multnomah County: Portland Arrests

Average Daily Arrests by Primary Charge Type

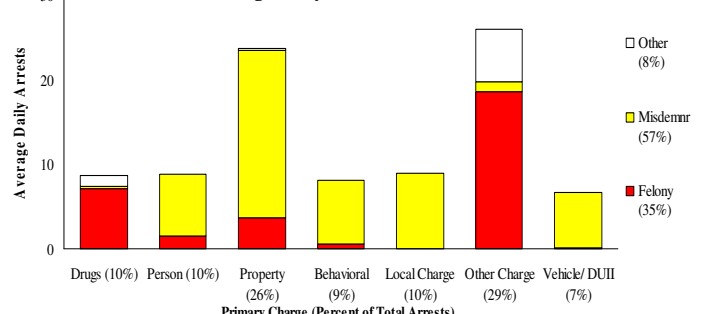


* Other largely reflects fugitive/warrant charges, behavioral and vehicular arrests and violations of local ordinances. PPB data only, downloaded April 24th, 2009.

Average Daily Reported Index Offenses*



Average Daily Arrests*: March (n=91)



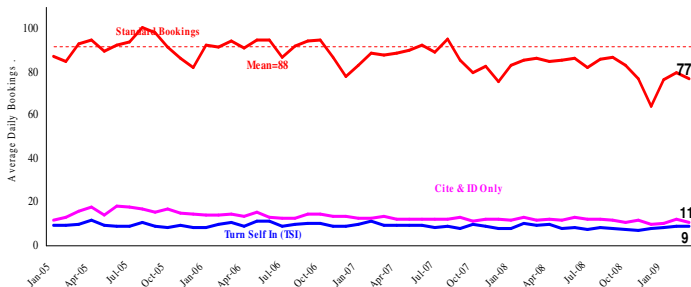
Local charges include drug- and prostitution-free zone violations.

*There were 2825 arrests in March.

From now on, warrants previously categorized as 'other' will be listed under felony arrests.

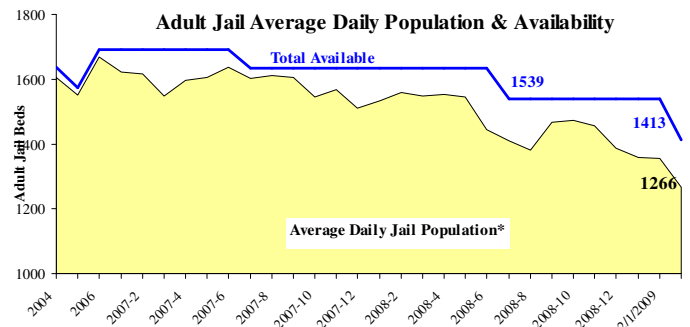
Sheriff: Bookings

Average Daily Bookings by Type



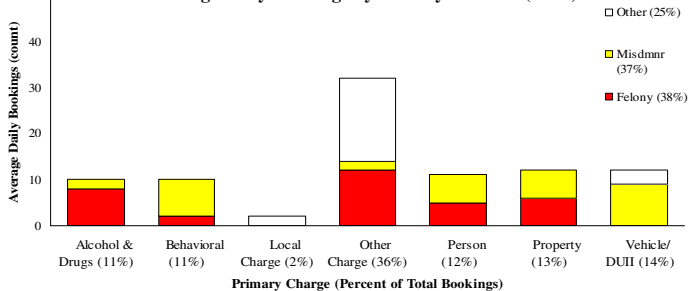
Sheriff: Custody- Adult Jail Beds

Adult Jail Average Daily Population & Availability



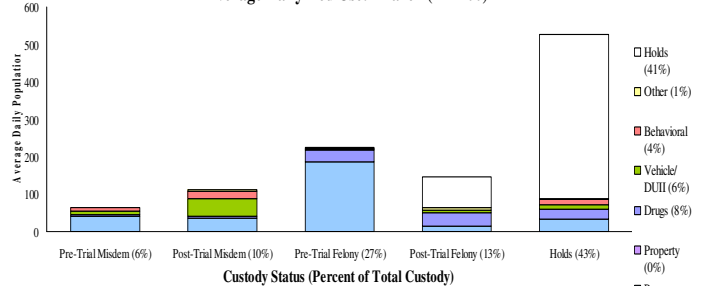
*Excludes in-transit custody classifications. The MCSO reported 0 matrix releases for March 2009. Data retrieved from DSS-J on April 27, 2009.

Average Daily Bookings by Severity*: March (n=89)



*Excludes Cite & ID. Total of 2770 bookings (89.4/day) through 03/31/2009. Corrections Health reported 537 psych-alerts (17.3/day) for the entire month of March.

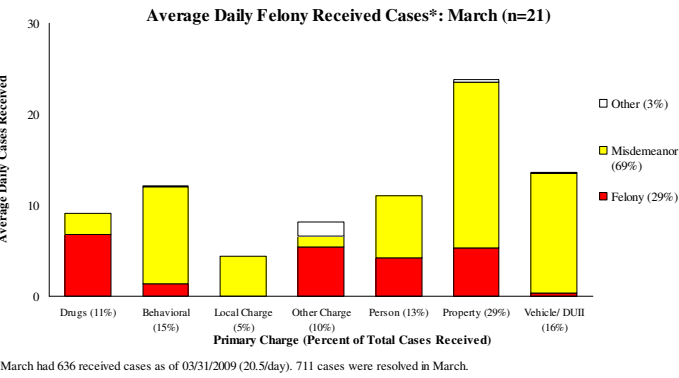
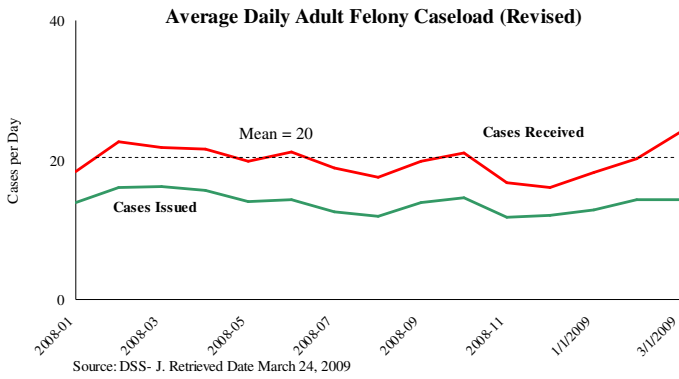
Average Daily Bed Use: March (n=1266)



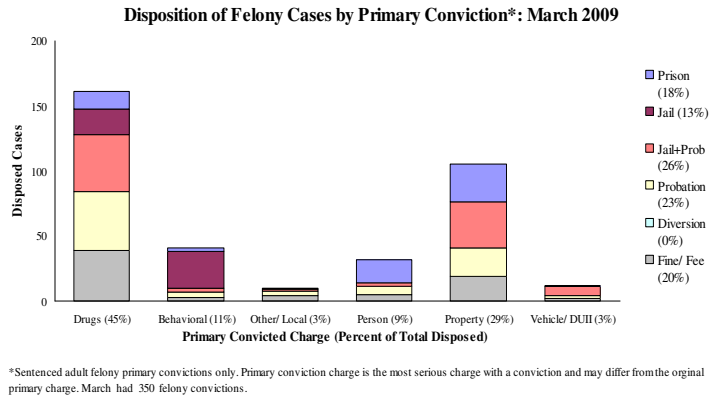
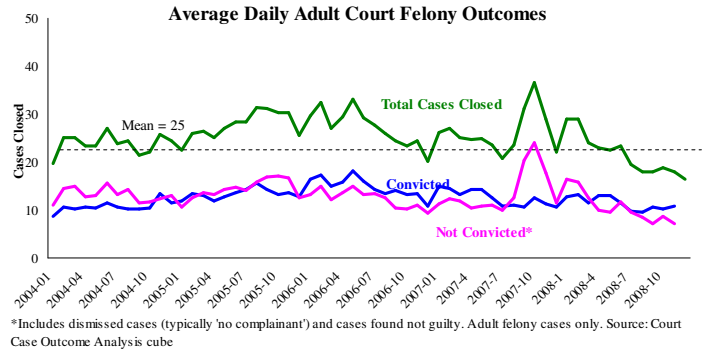
Average Daily Jail System Capacity=1413. Average Daily Population (ADP)=1266.

Notes: Reported Index Offenses have increased for the first time in 2009 for Gresham and Portland. Gresham saw increases in robbery, aggravated assault and automobile larceny. Portland saw increases in incidents of burglary and larceny. The Average Length of Stay (ALS) declined slightly. Portland Police Arrests have elevated from February in all categories, the most prevalent being property (9%), alcohol and drug (8%) and behavioral (6%) arrests. The inmate capacity was reduced from 1539 to 1413 in March, and the % utilized increased from 88.1 to 89.6.

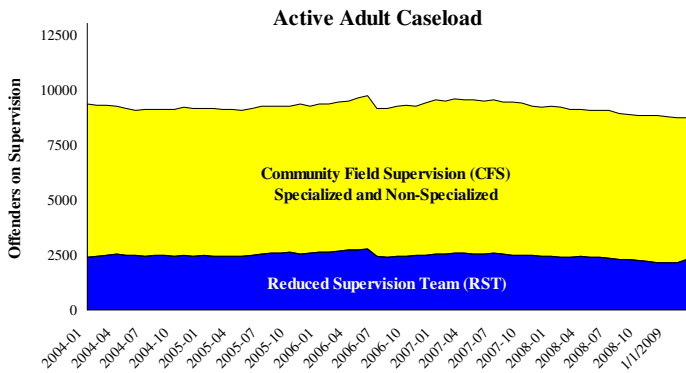
District Attorney: Adult Caseload



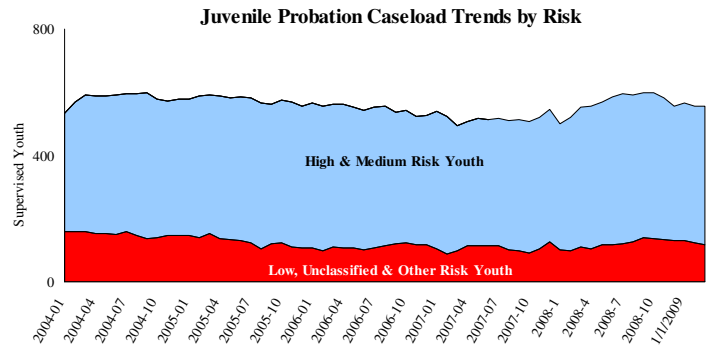
Court Processes: Sentencing Outcomes



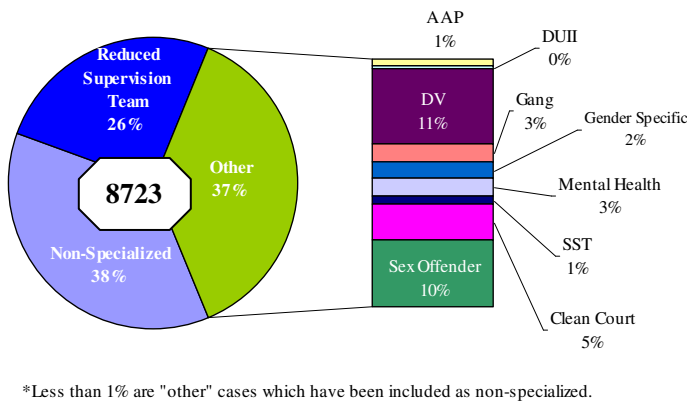
Adult Community Supervision: Caseloads



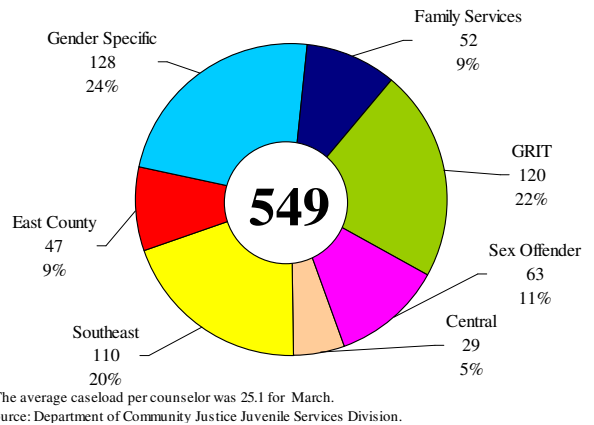
Juvenile Community Supervision: Caseloads



Adult Active Caseload by Type*: March 2009



Juvenile Justice Caseload by Unit*: March 2009



Notes: Data on sentencing outcomes contains felony only data and is continually under review and will be updated to more accurately reflect the disposition of cases in future briefs. The caseloads from the CFS and RST services and the Juvenile Counseling services have all declined for the second month in a row.