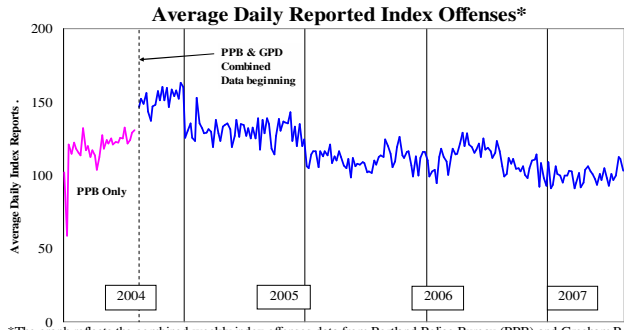


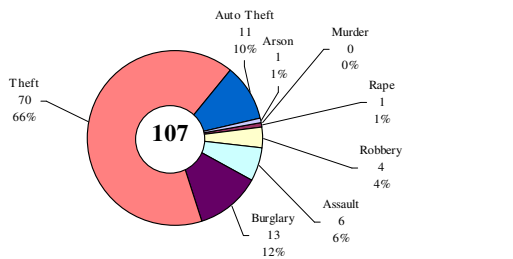
SAFETY PRIORITY BRIEF: JULY 2008

Multnomah County: Reported Index Offenses



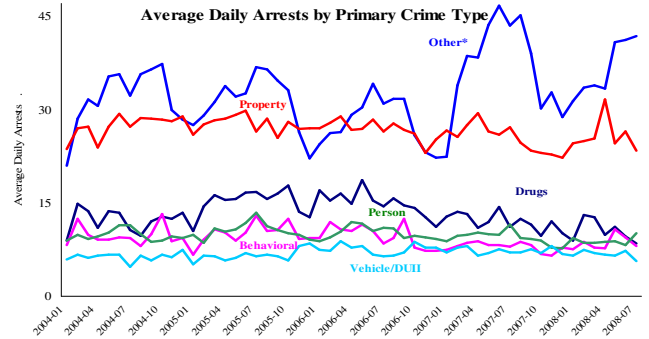
*The graph reflects the combined weekly index offenses data from Portland Police Bureau (PPB) and Gresham Police Dept (GPD), beginning 8/2004 (line in blue). According to LEDS (2005) data PPB and GPD account for 95% of all offenses county-wide. Index offenses account for about half of all reported offenses.

Average Daily Reported Index Offenses*



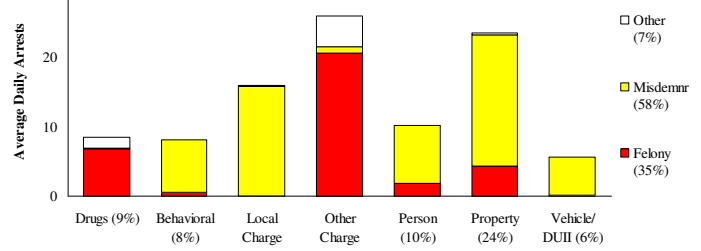
*Portland and Gresham, combined 4-week moving average for the week ending 8-2-08.

Multnomah County: Portland Arrests



*Other largely reflects fugitive/warrant charges and local ordinances (DFZ/PFZ). PPB data only, downloaded 8/15/08.

Average Daily Arrests*: July (n=97)

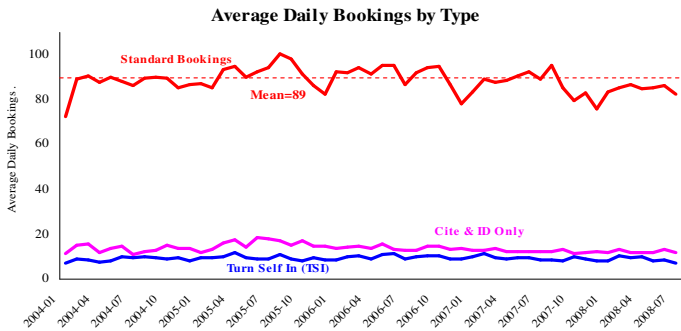


Local charges include drug- and prostitution-free zone violations.

*There were 3019 arrests in July.

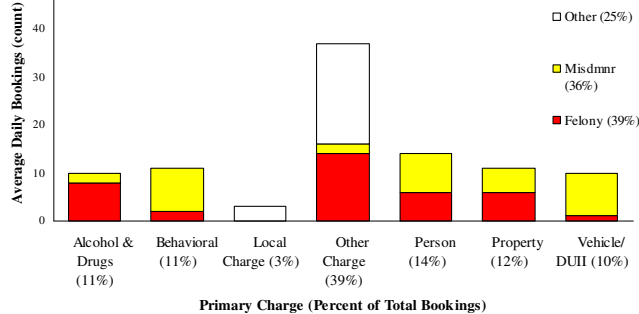
From now on, warrants previously categorized as 'other' will be listed under felony arrests.

Sheriff: Bookings



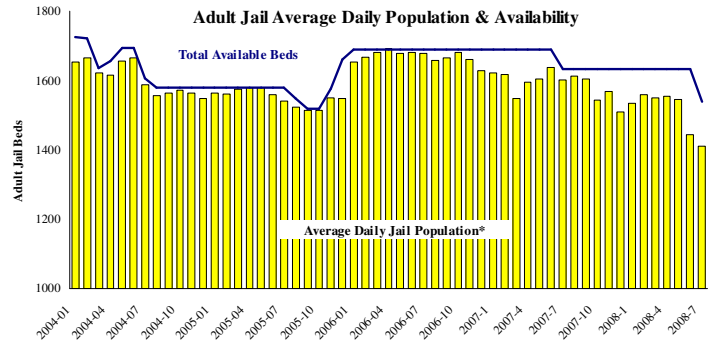
*In-transit bookinest are not reported herein and account for ~4% of all bookings. July's average length of stay (ALS) per booking was 16.64 days.

Average Daily Bookings by Severity*: July (n=94)



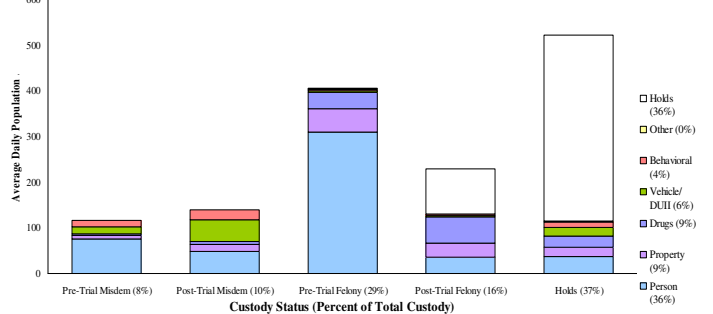
*Excludes Cite & ID. Total of 2909 bookings (93.8/day) through 7/31/08. Corrections Health reported 483 psych-alerts (15.6/day) for the entire month of July.

Sheriff: Custody- Adult Jail Beds



*Excludes in-transit custody classifications. The MCSO reported 0 matrix releases for July 2008.

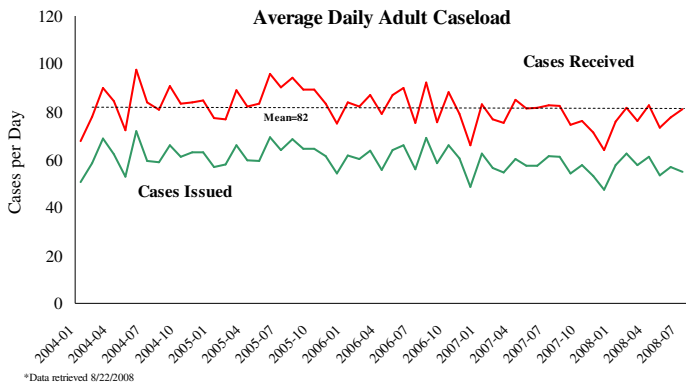
Average Daily Bed Use: July (n=1409)



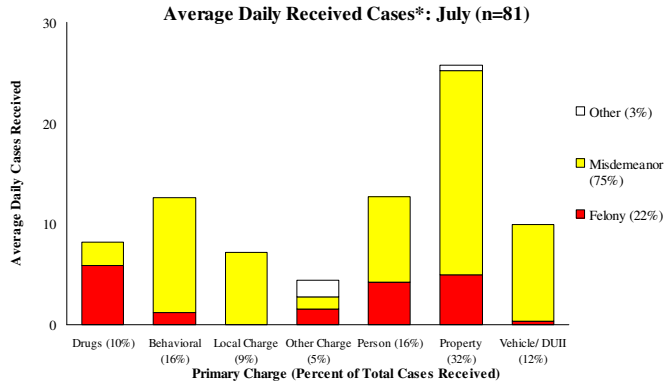
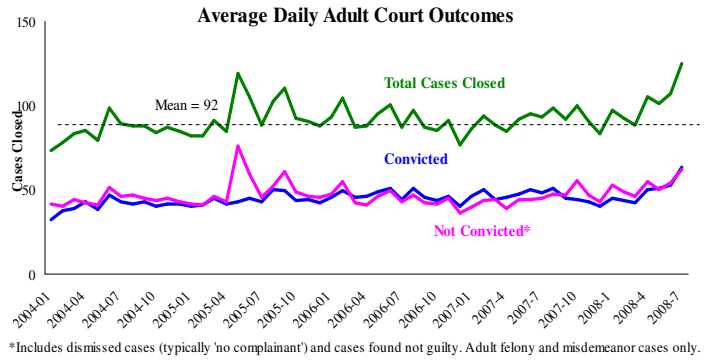
Average Daily Jail System Capacity=1539. Average Daily Population (ADP)=1409; there were 130 available beds on any given day.

Notes: Average Daily Arrests went down 3.96% from June to July at 97 per day. This change was primarily from decreases in Property and Behavioral crimes; this was somewhat counteracted by an increase in Local Charges. Average Daily Bookings also decreased to 94 per day in July, down from 98 the previous month. This was due to decreases in Property, A&D, and Vehicle Bookings. The jail bed capacity decrease took effect in July; decreasing from 1633 to 1539. Average Daily Population decreased to 1409 with a 91.6% utilization rate.

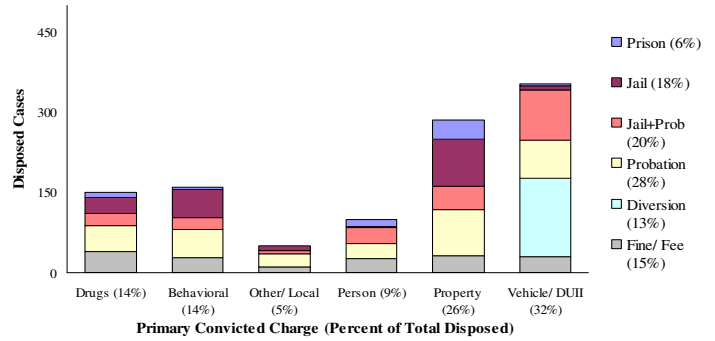
District Attorney: Adult Caseload



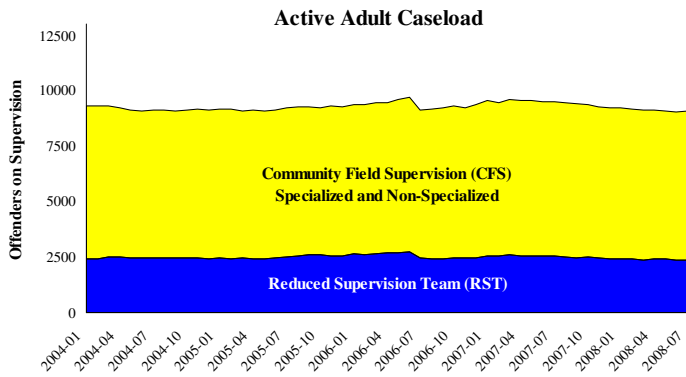
Court Processes: Sentencing Outcomes



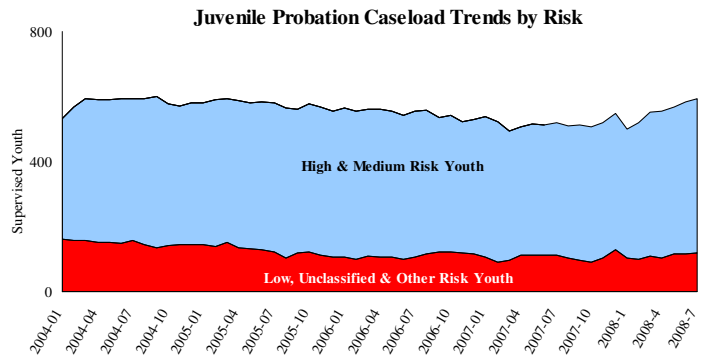
Disposition Type by Primary Conviction*: July 2008



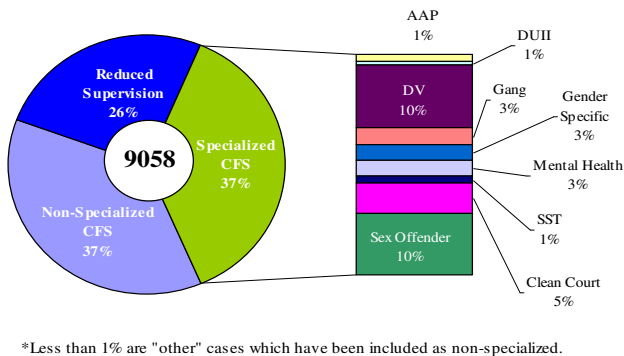
Adult Community Supervision: Caseloads



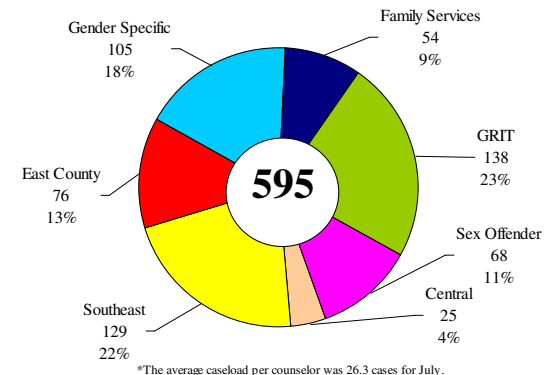
Juvenile Community Supervision: Caseloads



Adult Active Caseload by Type*: July 2008



Juvenile Justice Caseload by Unit*: July 2008



Notes: Average Daily Adult Court Outcomes had the highest Total Cases Closed and number of Convictions on record since January 2004. There was also the highest number of cases ending without a conviction since May 2005. This is the continuation of an increase that started in January 2008. The category with the largest increase was the Vehicle/DUII with a Jail and Probation sentence (from 10 in June to 93 in July). Also of note is a steady increase in High and Medium Risk Youth cases in the Juvenile Community Supervision measure. The increase was due primarily to increases in the Gender Specific, GRIT, and Southeast units.