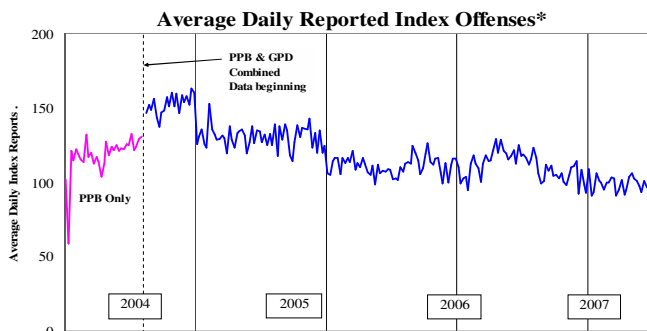


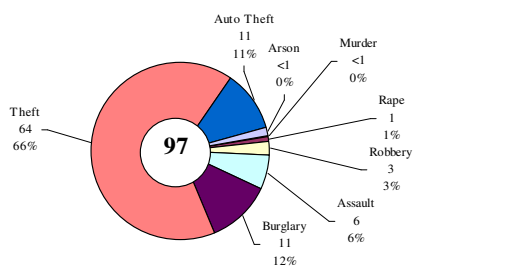
# SAFETY PRIORITY BRIEF: MAY 2008

## Multnomah County: Reported Index Offenses



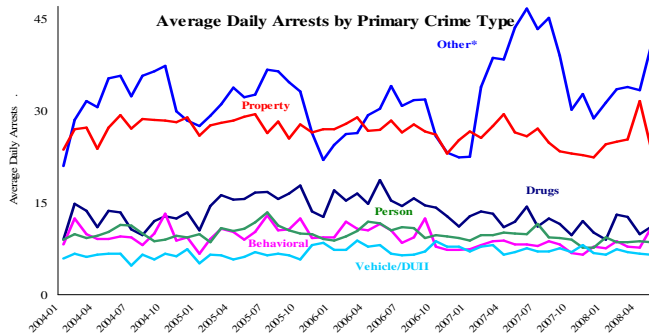
\*The graph reflects the combined weekly index offenses data from Portland Police Bureau (PPB) and Gresham Police Dept (GPD), beginning 8/2004 (line in blue). According to LEDS (2005) data PPB and GPD account for 95% of all offenses county-wide. Index offenses account for about half of all reported offenses.

### Average Daily Reported Index Offenses\*



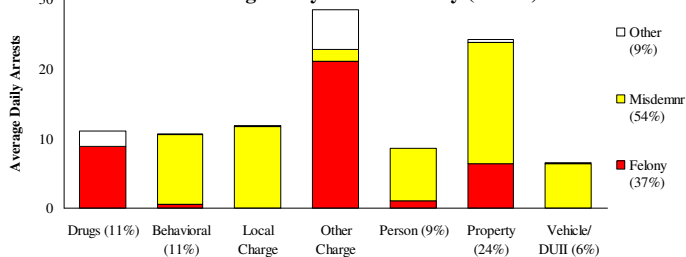
\*Portland and Gresham, combined 4-week moving average for the week ending 5-31-08.

## Multnomah County: Portland Arrests



\*Other largely reflects fugitive/warrant charges and local ordinances (DFZ/PFZ). PPB data only, downloaded 6/18/08.

### Average Daily Arrests\*: May (n=101)

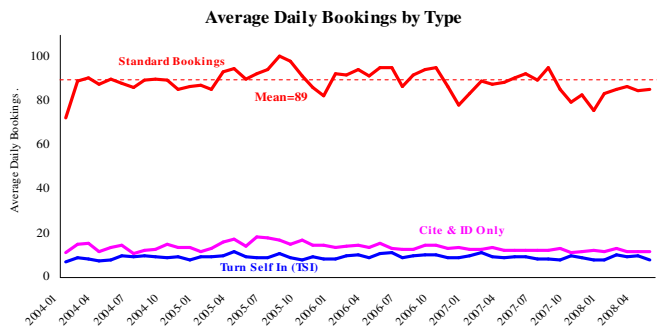


Local charges include drug- and prostitution-free zone violations.

\*There were 3137 arrests in May.

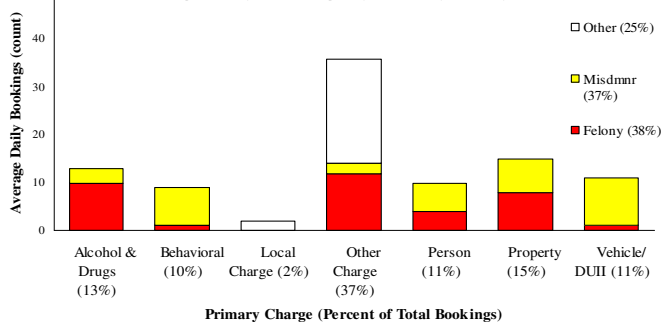
From now on, warrants previously categorized as 'other' will be listed under felony arrests.

## Sheriff: Bookings



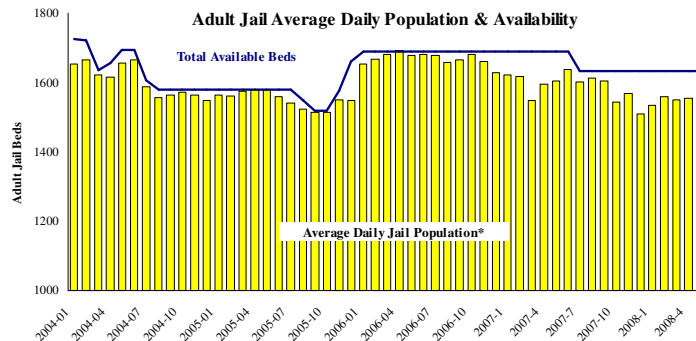
\*In-transit bookinest are not reported herein and account for ~4% of all bookings. May's average length of stay (ALS) per booking was 17.42 days.

### Average Daily Bookings by Severity\*: May (n=96)



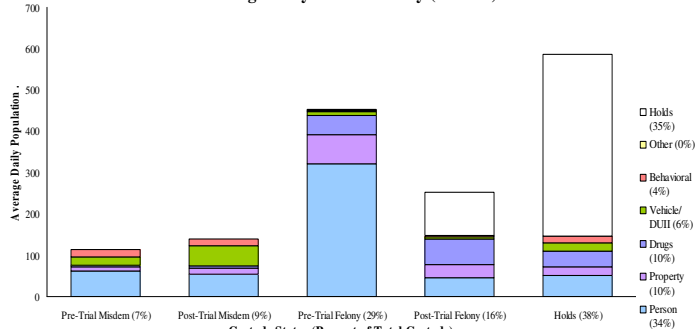
\*Excludes Cite & ID. Total of 2987 bookings (96.4/day) through 5/31/08. Corrections Health reported 540 psych-alerts (17.4/day) for the entire month of May.

## Sheriff: Custody- Adult Jail Beds



\*Excludes in-transit custody classifications. The MCSO reported 0 matrix releases for May 2008.

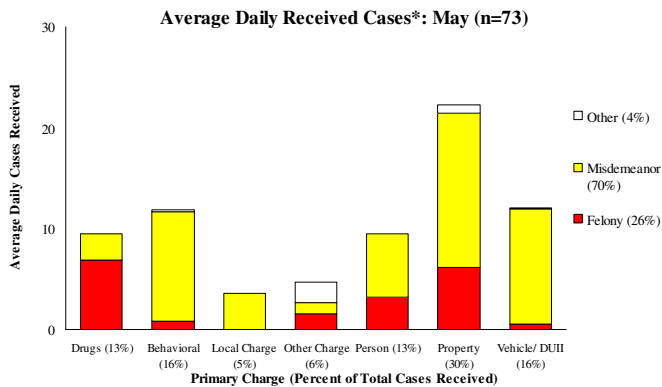
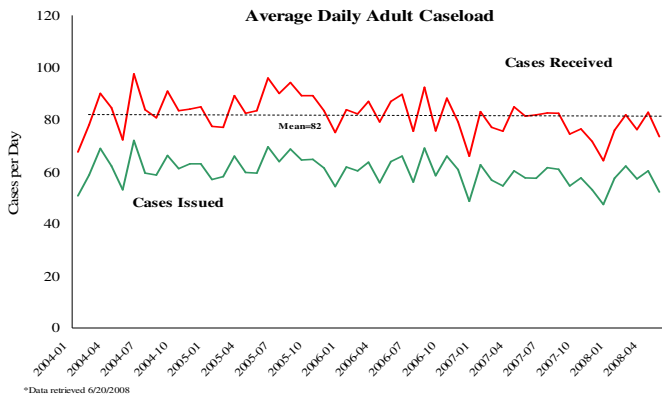
### Average Daily Bed Use: May (n=1545)



Average Daily Jail System Capacity=1633. Average Daily Population (ADP)=1545; there were 88 available beds on any given day.

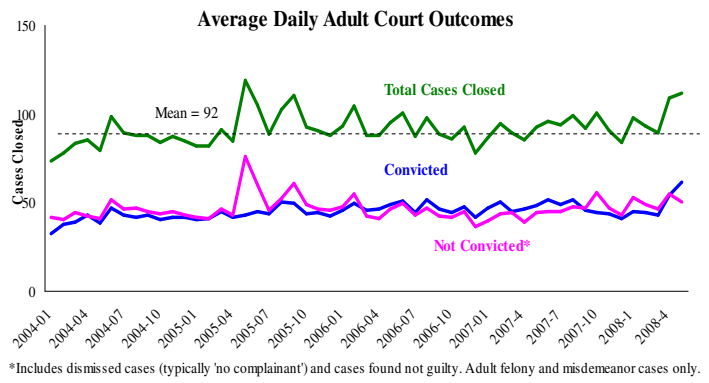
**Notes:** Average Daily Arrests increased from 97 per day in April to 101 per day in May. This increase can be attributed to a large increase in the Other category (33 to 40 per day), the Drug category (10 to 11 per day), and the Behavioral category (8 to 11 per day). This increase was offset by the spike in Property arrests in April returning to a more normal level; the cause of which is not yet known. The increase in the Other category is from a cyclical trend with arrests increasing in the spring and decreasing in the fall and winter.

## District Attorney: Adult Caseload

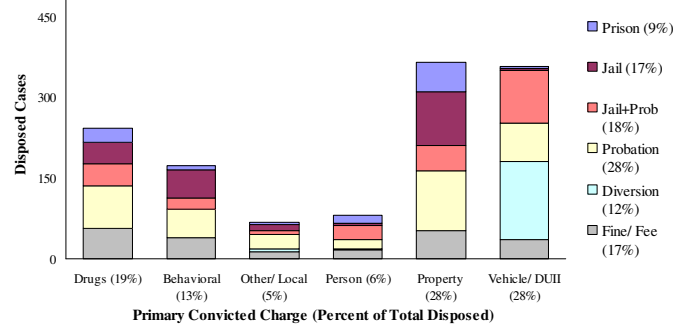


\*May had 2277 received cases as of 5-31-2008 (73.5/day). 2551 cases were resolved in May.

## Court Processes: Sentencing Outcomes

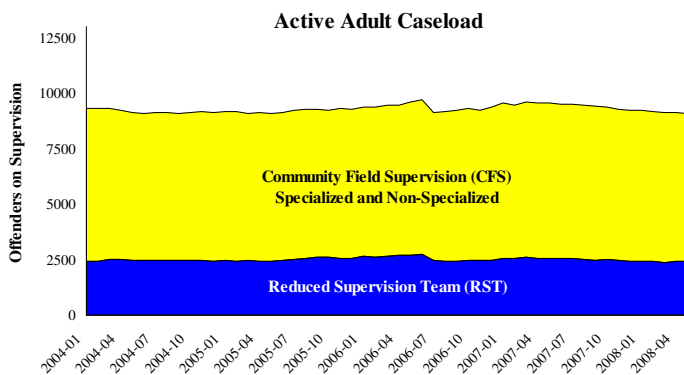


### Disposition Type by Primary Conviction\*: May 2008

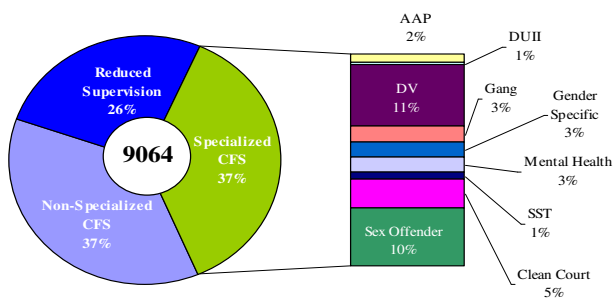


\*Sentenced adult felony and misdemeanors primary convictions only. Primary conviction charge is the most serious charge with a conviction and may differ from the original primary charge. May had 1,910 convictions; 23% were felonies.

## Adult Community Supervision: Caseloads

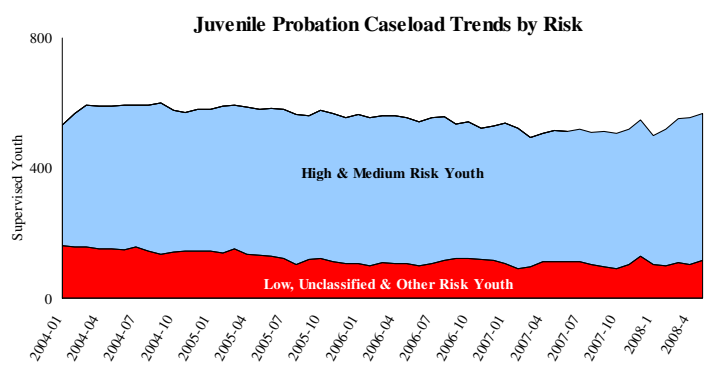


### Adult Active Caseload by Type\*: May 2008

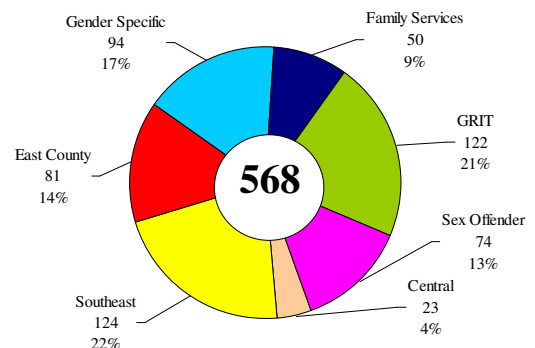


\*Less than 1% are "other" cases which have been included as non-specialized.

## Juvenile Community Supervision: Caseloads



### Juvenile Justice Caseload by Unit\*: May 2008



\*The average caseload per counselor was 25.2 cases for May. The Family Services Unit became active in January.

**Notes:** Average Daily DA Adult Caseload experienced a 12% decrease in cases received from April to May. The majority of this decrease came from Cases Issued from misdemeanor Person and Property cases. This was somewhat offset by an increase in misdemeanor Behavioral cases. Total Average Daily Adult Court Cases Closed leveled after a large increase in April. This was from a decrease in cases ending without a conviction; cases ending in a conviction continued to increase in May with the highest level (1910) since January 2004.