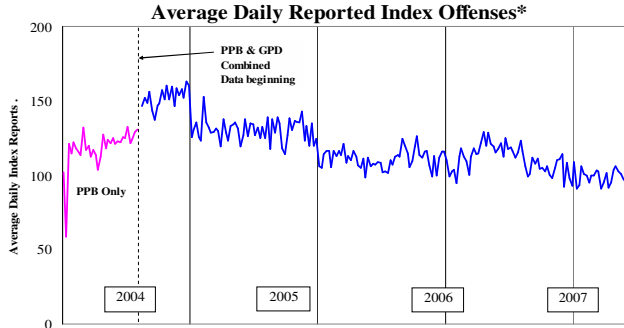


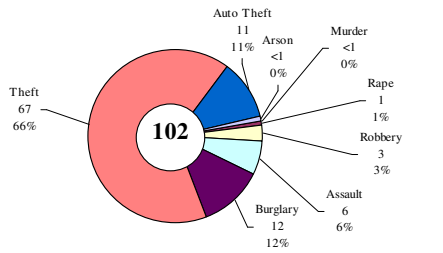
SAFETY PRIORITY BRIEF: APRIL 2008

Multnomah County: Reported Index Offenses



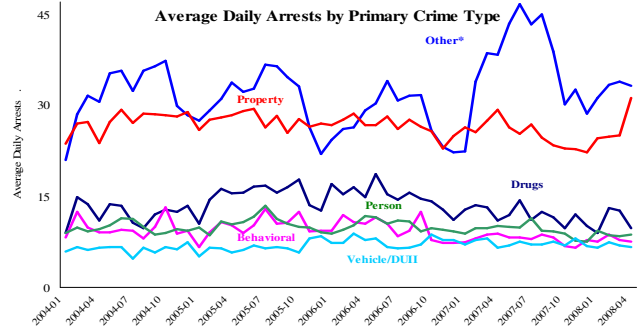
*The graph reflects the combined weekly index offenses data from Portland Police Bureau (PPB) and Gresham Police Dept (GPD), beginning 8/2004 (line in blue). According to LEDS (2005) data PPB and GPD account for 95% of all offenses county-wide. Index offenses account for about half of all reported offenses.

Average Daily Reported Index Offenses*



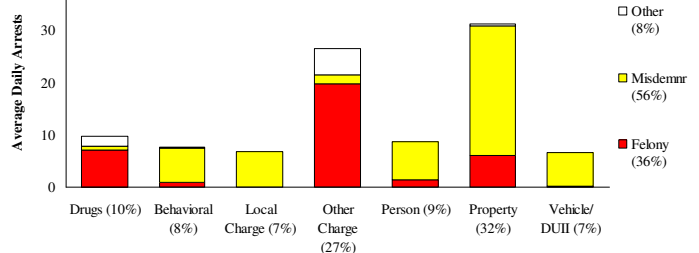
*Portland and Gresham, combined 4-week moving average for the week ending 5-10-08.

Multnomah County: Portland Arrests



*Other largely reflects fugitive/warrant charges and local ordinances (DFZ/PFZ). PPB data only, downloaded 5/23/08.

Average Daily Arrests*: April (n=97)

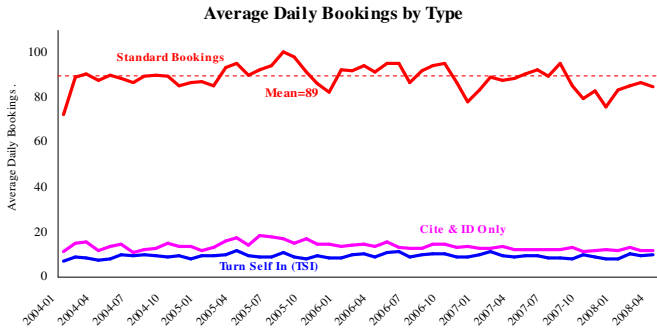


Local charges include drug- and prostitution-free zone violations.

*There were 2907 arrests in April.

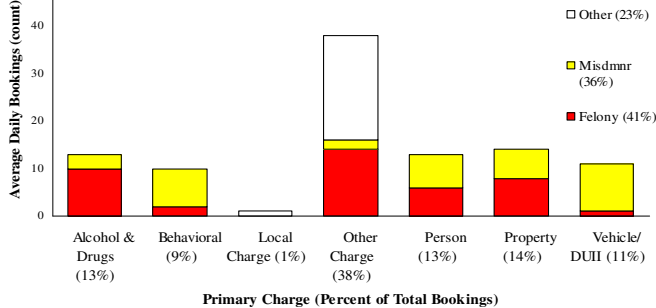
From now on, warrants previously categorized as 'other' will be listed under felony arrests.

Sheriff: Bookings



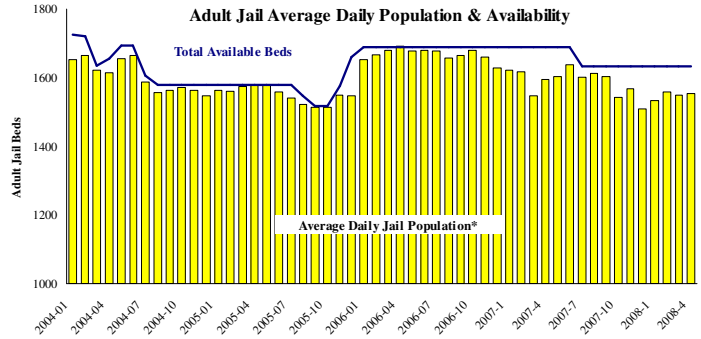
*In-transit bookings are not reported herein and account for ~4% of all bookings. April's average length of stay (ALS) per booking was 17.03 days.

Average Daily Bookings by Severity*: April (n=99)



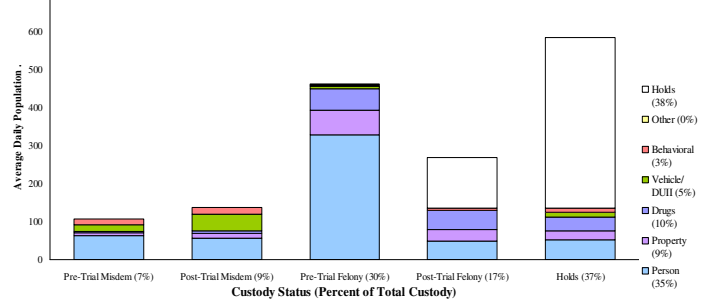
*Excludes Cite & ID. Total of 2961 bookings (98.7/day) through 4/30/08. Corrections Health reported 476 psych-alerts (15.9/day) for the entire month of April.

Sheriff: Custody- Adult Jail Beds



*Excludes in-transit custody classifications. The MCSO reported 0 matrix releases for April 2008.

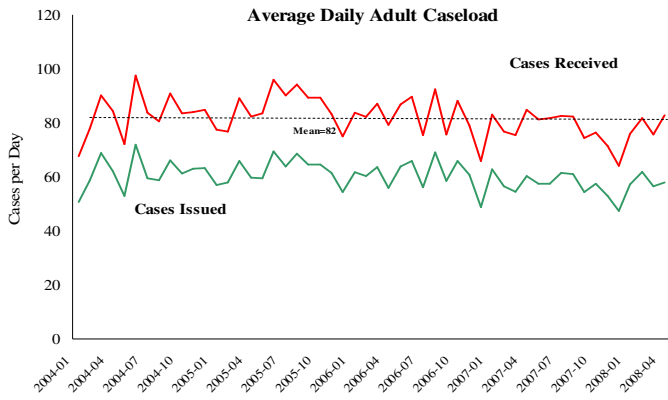
Average Daily Bed Use: April (n=1555)



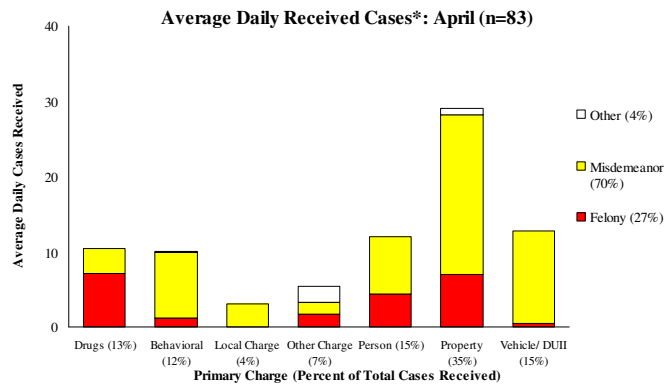
Average Daily Jail System Capacity=1633. Average Daily Population (ADP)=1555; there were 78 available beds on any given day.

Notes: The 4 week period that ended on 5/10/08 experienced a 4.1% increase in Reported Index Offenses from the previous four week period. This increase was primarily due to an increase in Larceny from Auto reports and Property Crime reports. This coincides with a record number of arrests with a Property primary crime type (31/day compared to an average of 27 since Jan. 2004). This increase was somewhat offset by a decrease in most other categories; most notably in the Drug category.

District Attorney: Adult Caseload

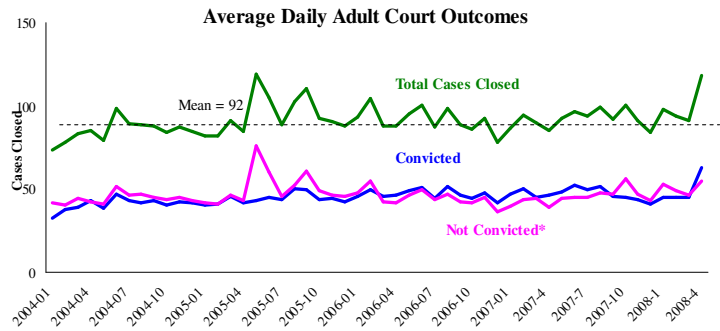


*Data retrieved 5/28/2008



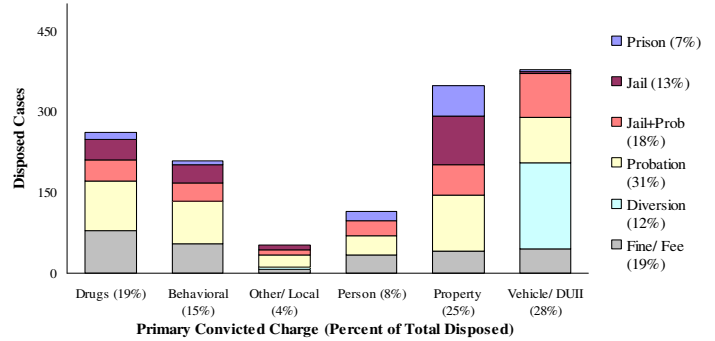
*April had 2482 received cases as of 4-30-2008 (82.7/day). 2828 cases were resolved in April.

Court Processes: Sentencing Outcomes



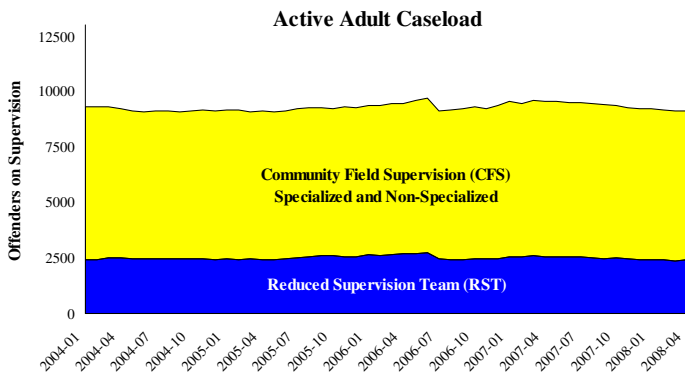
*Includes dismissed cases (typically 'no complainant') and cases found not guilty. Adult felony and misdemeanor cases only.

Disposition Type by Primary Conviction*: April 2008

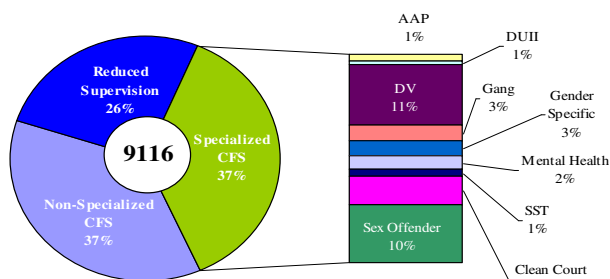


*Sentenced adult felony and misdemeanors primary convictions only. Primary conviction charge is the most serious charge with a conviction and may differ from the original primary charge. April had 1,885 convictions; 24% were felonies.

Adult Community Supervision: Caseloads

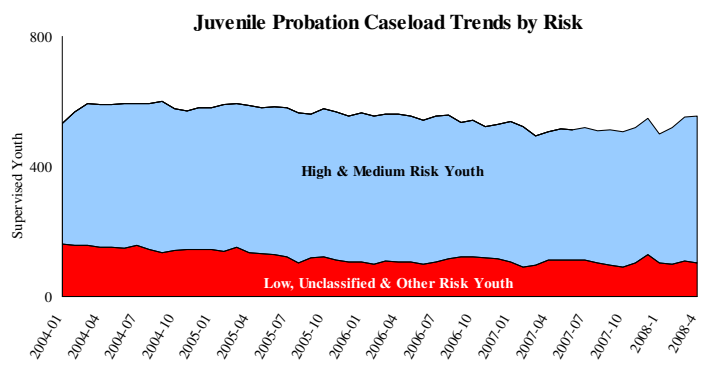


Adult Active Caseload by Type*: April 2008

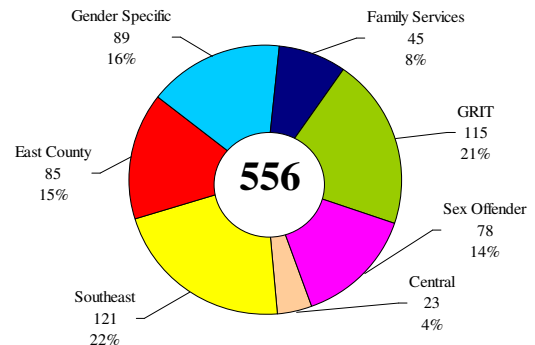


*Less than 1% are "other" cases which have been included as non-specialized.

Juvenile Community Supervision: Caseloads



Juvenile Justice Caseload by Unit*: April 2008



*The average caseload per counselor was 25.8 cases for April. The Family Services Unit became active in January.

Notes: Average Daily Adult Cases Received returned to its February level after a dip in March. Average Daily Adult Court Outcomes had the highest total number of cases closed since May 2005 and the highest number of Convictions on record since January 2004. This increase was due primarily to a rise in Behavioral convictions and Misdemeanor crimes. Juvenile Justice Caseloads leveled after experiencing a large increase during the previous two months.