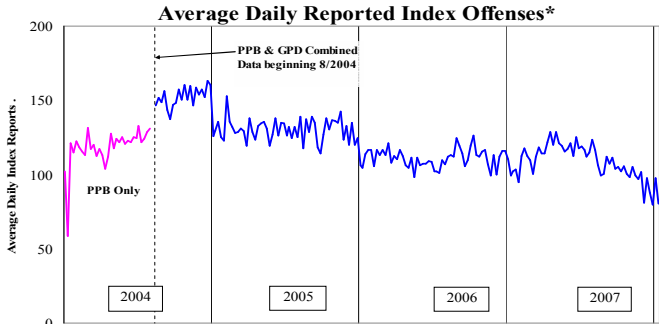


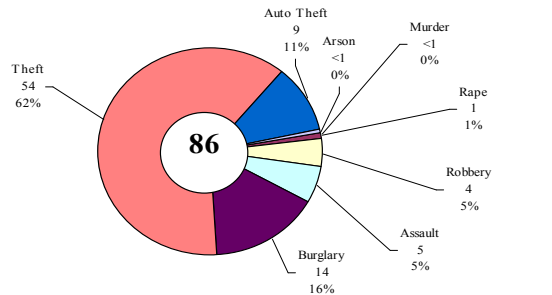
SAFETY PRIORITY BRIEF: DECEMBER 2007

Multnomah County: Reported Index Offenses



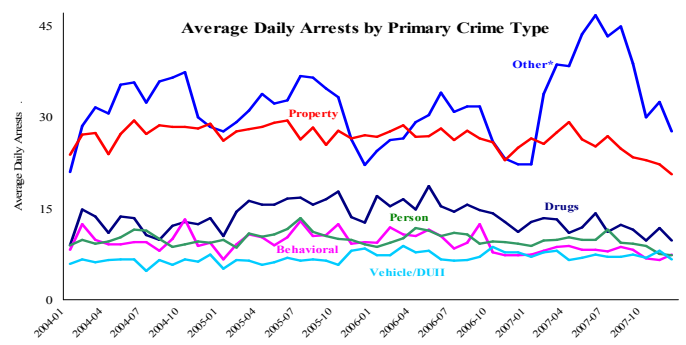
*The graph reflects the combined weekly index offenses data from Portland Police Bureau (PPB) and Gresham Police Dept (GPD), beginning 8/2004 (line in blue). According to LEDS (2005) data PPB and GPD account for 95% of all offenses county-wide. Index offenses account for about half of all reported offenses.

Average Daily Reported Index Offenses*



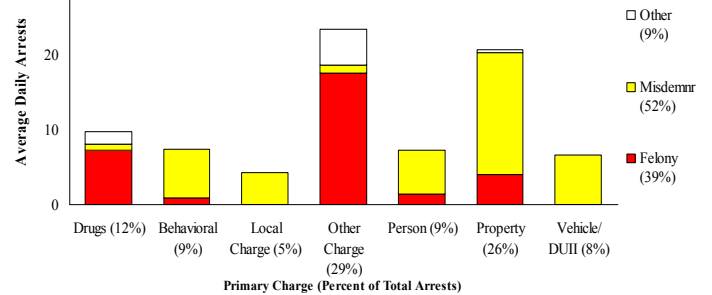
*Portland and Gresham, combined 4-week moving average for the week ending 12-29-07.

Multnomah County: Portland Arrests



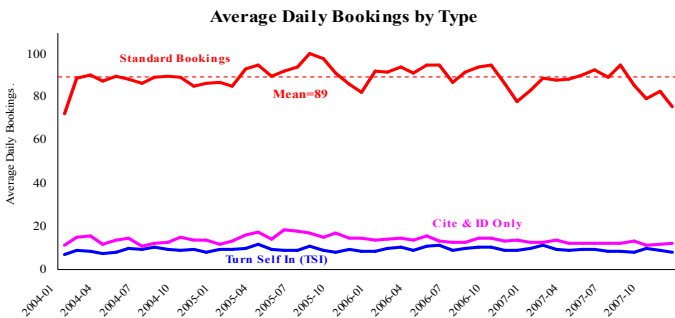
*Other largely reflects fugitive/warrant charges and local ordinances (DFZ/PFZ). PPB data only, downloaded 1/16/08.

Average Daily Arrests*: December (n=79)



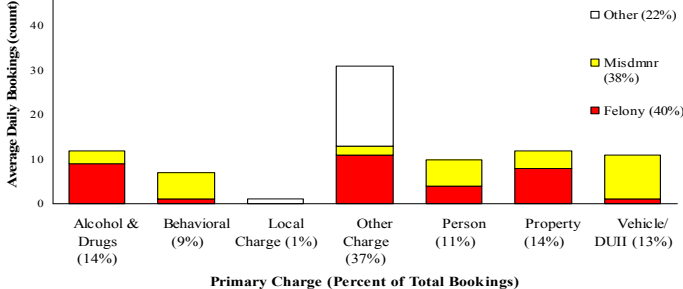
Local charges include drug- and prostitution-free zone violations. *There were 2459 arrests in December. From now on, warrants previously categorized as 'other' will be listed under felony arrests.

Sheriff: Bookings



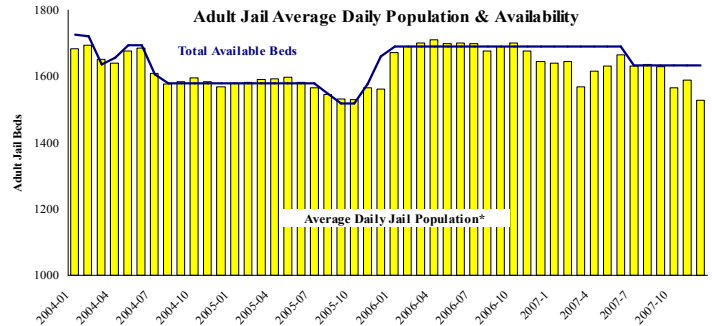
*In-transit bookings are not reported herein and account for ~4% of all bookings. December's average length of stay (ALS) per booking was 18.72 days.

Average Daily Bookings by Severity*: December (n=86)



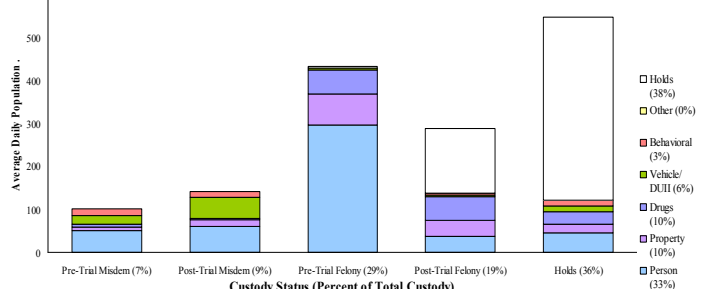
*Excludes Cite & ID. Total of 2662 bookings (85.9/day) through 12/31/07. Corrections Health reported 435 psych-alerts (14/day) for the entire month of December.

Sheriff: Custody- Adult Jail Beds



*Excludes in-transit custody classifications. The MCSO reported 9 matrix releases for December 2007.

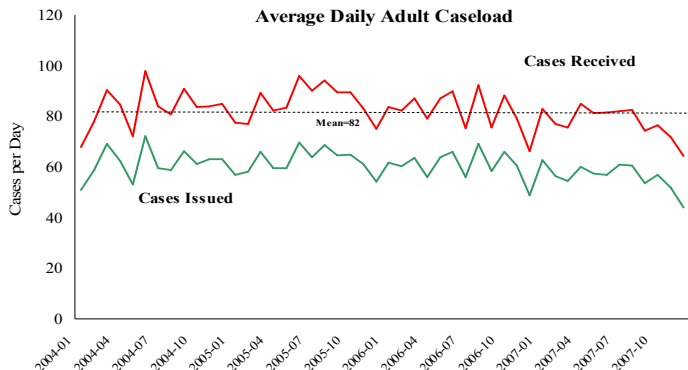
Average Daily Bed Use: December (n=1510)



Average Daily Jail System Capacity=1633. Average Daily Population (ADP)=1510; there were 123 available beds on any given day.

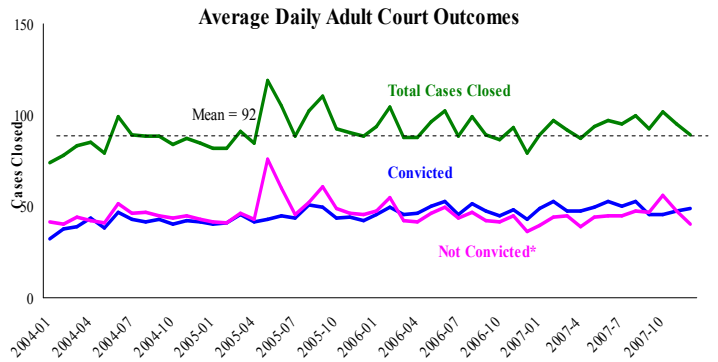
Notes: Average Daily Standard Bookings recorded its lowest value since January 2004 (76). This low value is not from a specific category but from an overall decrease. The jail bed utilization also had its lowest average daily population on record of 1528 with a utilization rate of 93.6%. Much of this decrease was driven by the "Hold/Other" category.

District Attorney: Adult Caseload



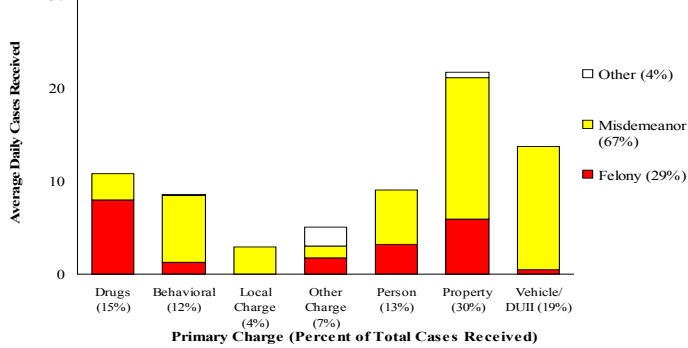
*Data retrieved 1/16/2008 Note: 118 cases are pending review.

Court Processes: Sentencing Outcomes



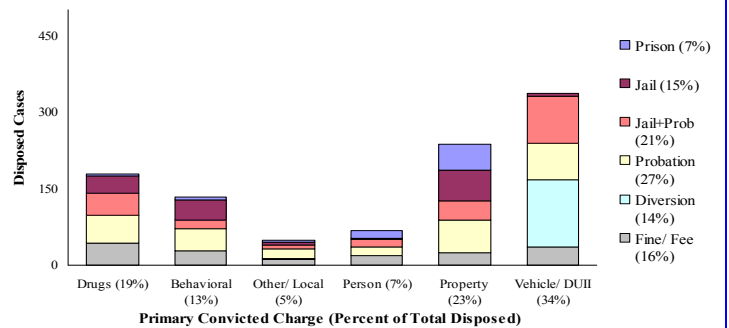
*Includes dismissed cases (typically 'no complainant') and cases found not guilty. Adult felony and misdemeanor cases only.

Average Daily Received Cases*: December (n=64)



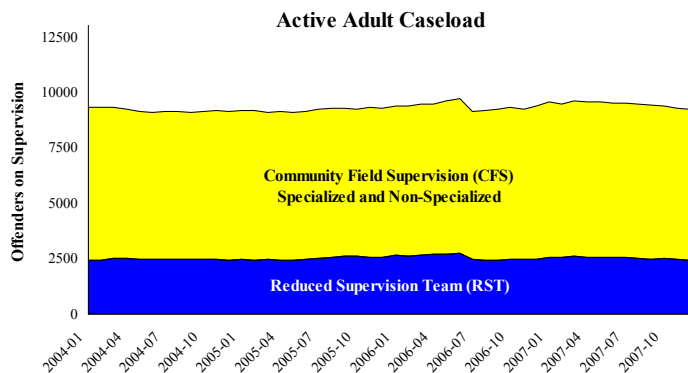
*December had 1991 received cases as of 12-31-2007 (64.2/day). Of those, 118 cases were pending review.

Disposition Type by Primary Conviction*: December 2007

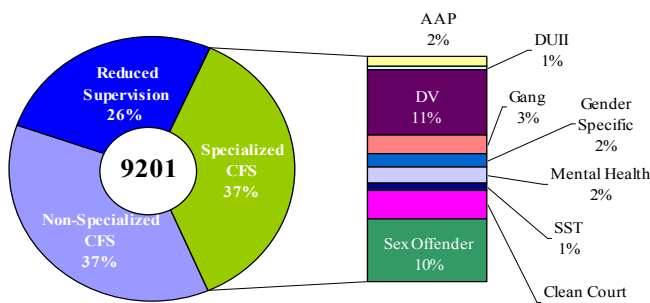


*Sentenced adult felony and misdemeanors primary convictions only. Primary conviction charge is the most serious charge with a conviction and may differ from the original primary charge. December had 1,516 convictions; 24% were felonies.

Adult Community Supervision: Caseloads

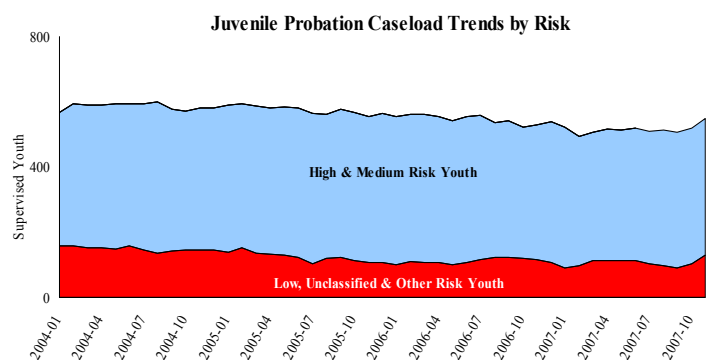


Adult Active Caseload by Type*: December 2007

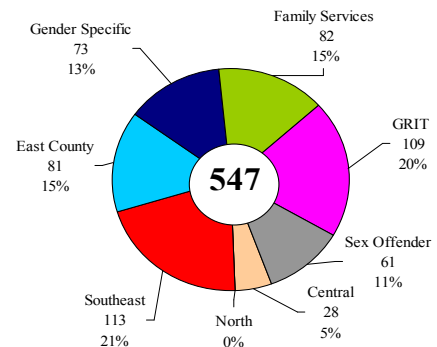


*Less than 1% are "other" cases which have been included as non-specialized.

Juvenile Community Supervision: Caseloads



Juvenile Justice Caseload by Unit*: December 2007



*The average caseload per counselor was 23.5 cases for December. The North Unit merged with GRIT for November.

Notes: Average Daily Received Cases experienced its lowest value on record (64). For the last three years there has been a cyclical trend with low points in the winters and high points in the summers. Each year however the average level of received cases has been declining. The calendar years of 2005, 2006, and 2007 saw average caseloads of 86, 82, and 78 daily cases respectively. At the Department of Community Justice there has been reorganization in the divisions serving juveniles. In November the North unit closed with its caseload being transferred to GRIT. This coincides with the formation of a School Success Unit. Family Services also increased its capacity 67% from November to December due to the addition of a counselor, and one caseload from GRIT was absorbed into East County.