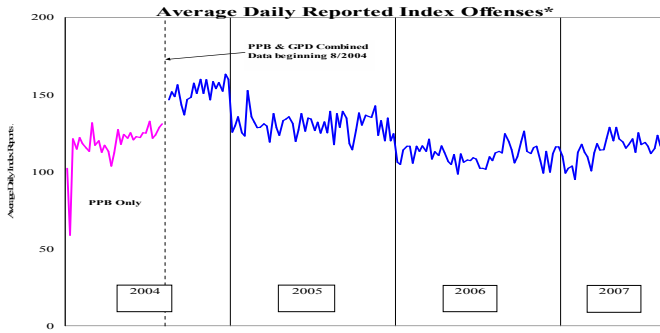


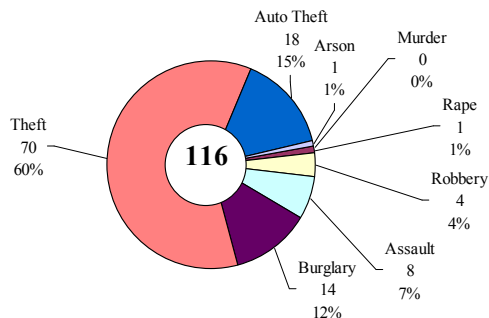
# SAFETY PRIORITY BRIEF: JULY 2007

## Multnomah County: Reported Index Offenses



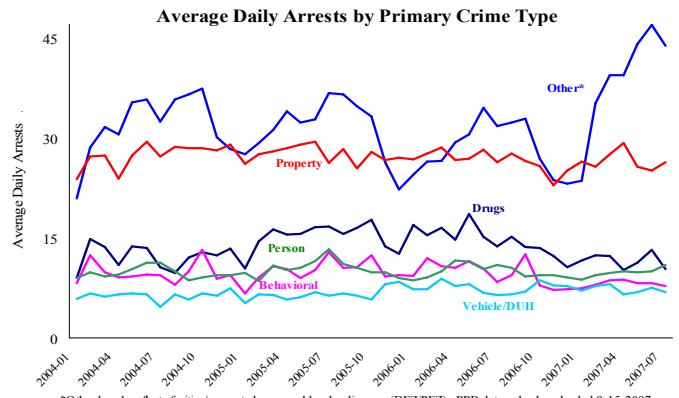
\*The graph reflects the combined weekly index offenses data from Portland Police Bureau (PPB) and Gresham Police Dept (GPD), beginning 8/2004 (line in blue). According to LEADS (2005) data PPB and GPD account for 95% of all offenses county-wide. Index offenses account for about half of all reported offenses.

### Average Daily Reported Index Offenses\*



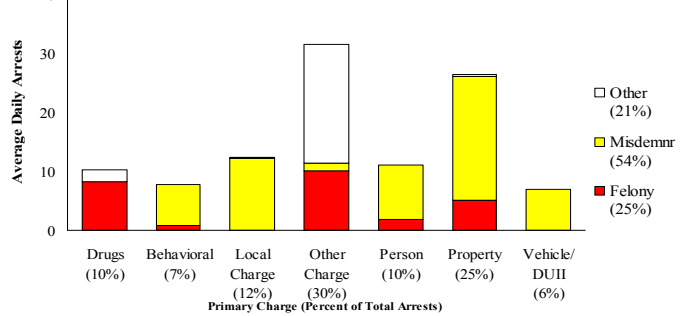
\*Portland and Gresham, combined 4-week moving average for the week ending 7-28-07.

## Multnomah County: Portland Arrests



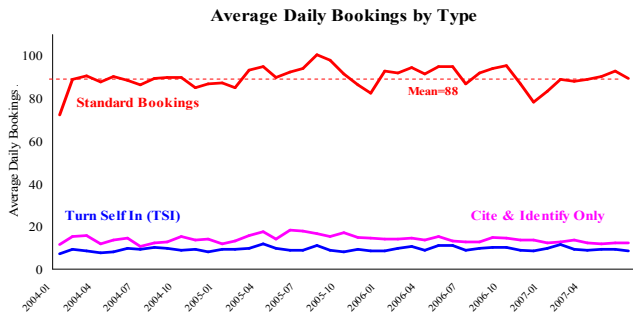
\*Other largely reflects fugitive/warrant charges and local ordinances (DFZ/PFZ). PPB data only, downloaded 8-15-2007.

### Average Daily Arrests\*: July (n=106)



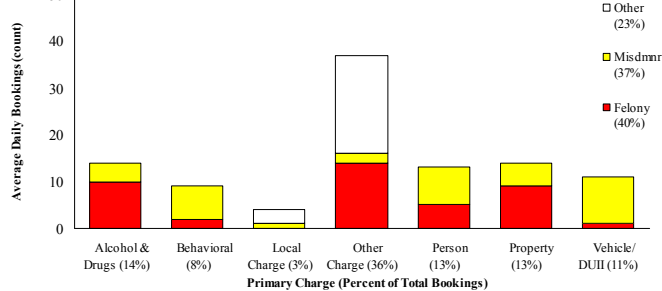
\*There were 3284 arrests in July. Local Charges include drug-free and prostitution free zone violations.

## Sheriff: Bookings



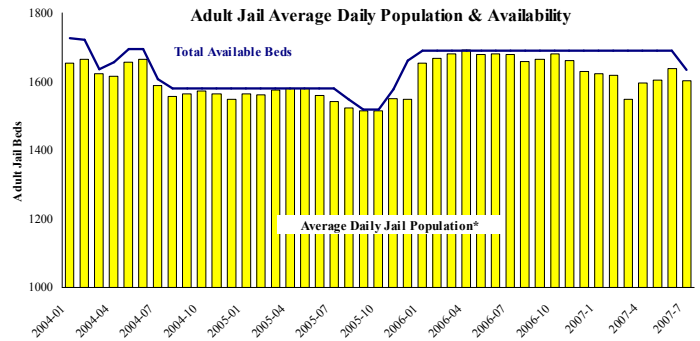
\*In-transit bookings are not reported herein and account for ~4% of all bookings. July's average length of stay (ALS) per booking was 16.79 days.

### Average Daily Bookings by Severity\*: July (n=101)



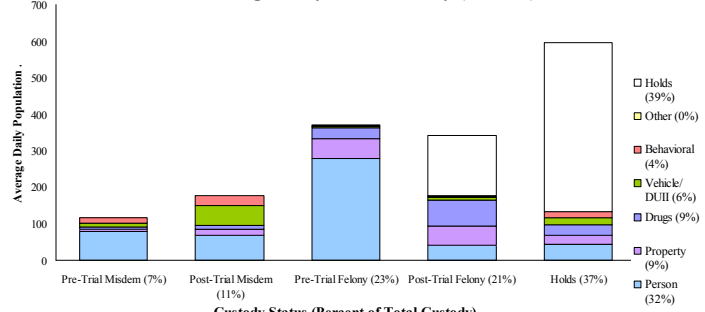
\*Excludes Cite & ID. Total of 3126 bookings (100.8/day) through 7/31/07. Corrections Health reported psych-alerts (16/day) for the entire month of July.

## Sheriff: Custody- Adult Jail Beds



\*Excludes in-transit custody classifications. The MCSO reported 63 matrix releases for July 2007.

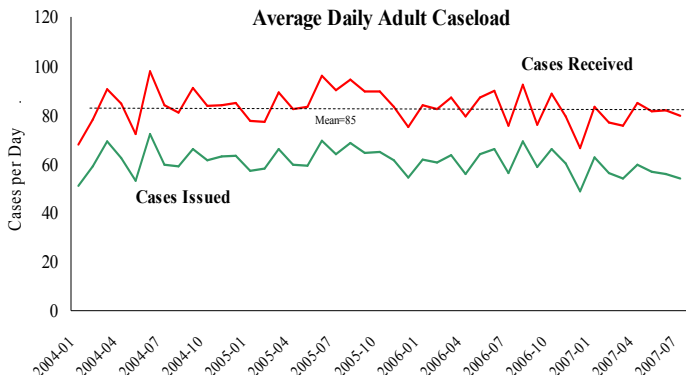
### Average Daily Bed Use: July (n=1602)



Average Daily Jail System Capacity=1633. Average Daily Population (ADP)=1602; there were 31 available beds on any given day.

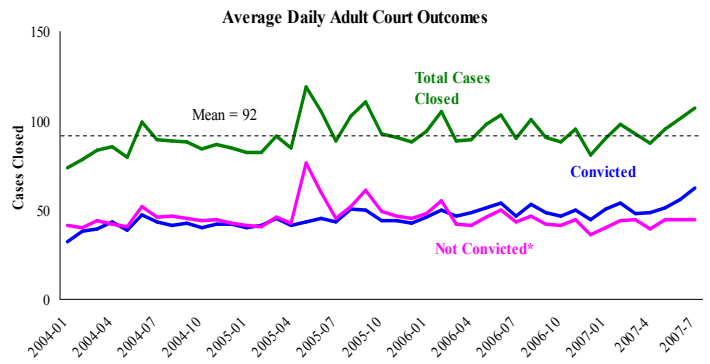
**Notes:** The increase in arrests reversed direction for the first time since December, dropping from 47 to 44 per day average. This increase was primarily in the Other category with a specific jump in the Bench Warrant Bail Jump and Fugitive charges. The Average Daily Bookings also saw a decrease this month after an increase last month. This was due to decreases in the Other and Property categories. The number of adult jail beds decreased this month from 1690 to 1633 from a dorm closure at the Inverness Facility.

## District Attorney: Adult Caseload



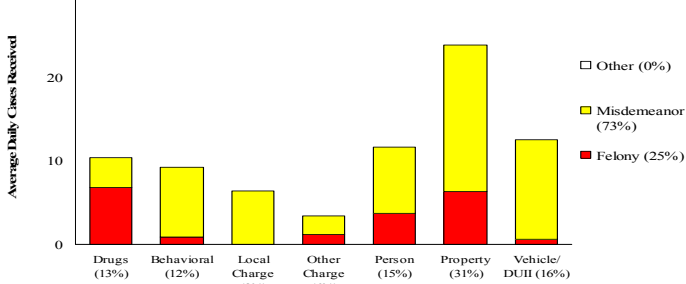
\*Data retrieved 8/15/2007. Note: Many recently received cases are pending review.

## Court Processes: Sentencing Outcomes



\*Includes dismissed cases (typically 'no complainant') and cases found not guilty. Adult felony and misdemeanor cases only.

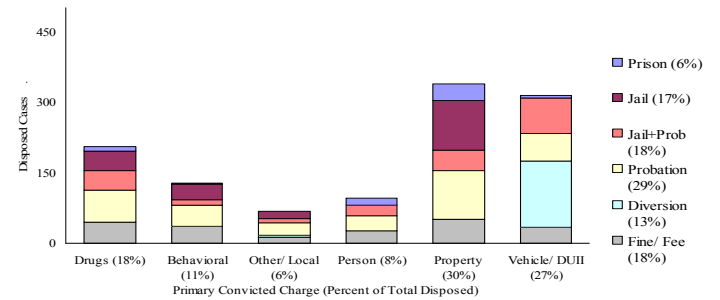
### Average Daily Received Cases\*: July (n=80)



#### Primary Charge (Percent of Total Cases Received)

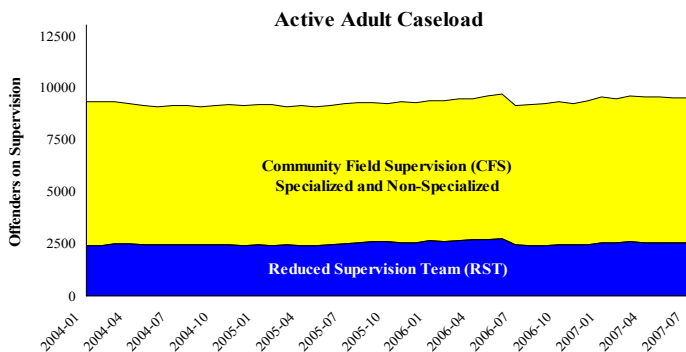
\*July had 2470 received cases as of 7-31-2007 (80/day). Of those, 586 cases were pending review.

### Disposition Type by Primary Conviction\*: July 2007

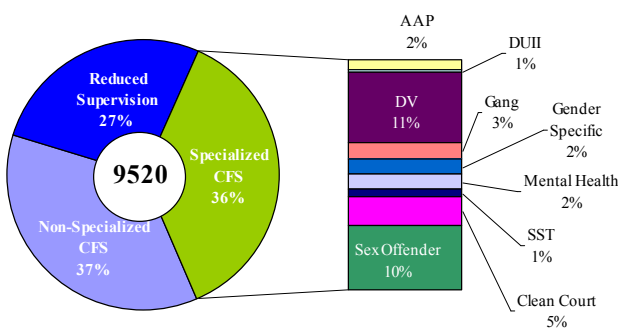


\*Sentenced adult felony and misdemeanors primary convictions only. Primary conviction charge is the most serious charge with a conviction and may differ from the original primary charge. July had 1,935 convictions; 20% were felonies.

## Adult Community Supervision: Caseloads

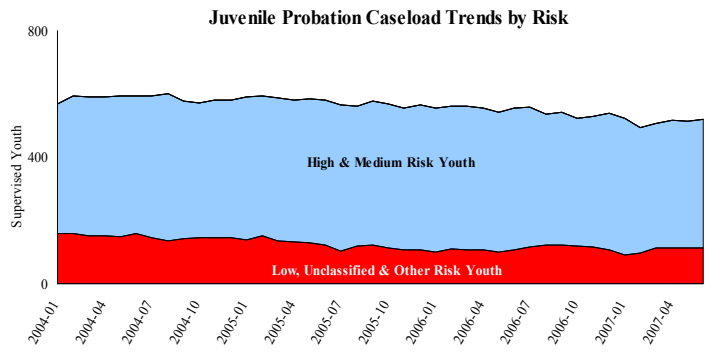


### Adult Active Caseload by Type\*: July 2007

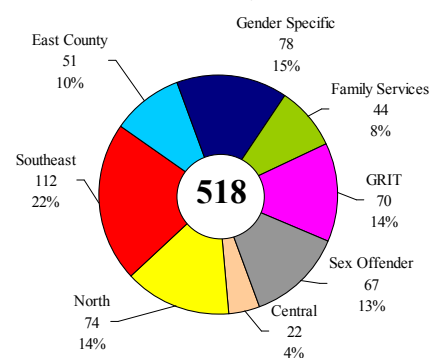


\*Less than 1% are "other" cases which have been included as non-specialized.

## Juvenile Community Supervision: Caseloads



### Juvenile Justice Caseload by Unit\*: June 2007



\*The average caseload per counselor was 23.2 cases for June.

**Notes:** The District Attorney's Office had the highest number of cases pending review in record with 586. This was due to a large decrease in the number of cases resolved. The total number of adult court cases closed has been increasing since April 2007 which is being driven almost entirely by an increase in the number of cases ending with a conviction.