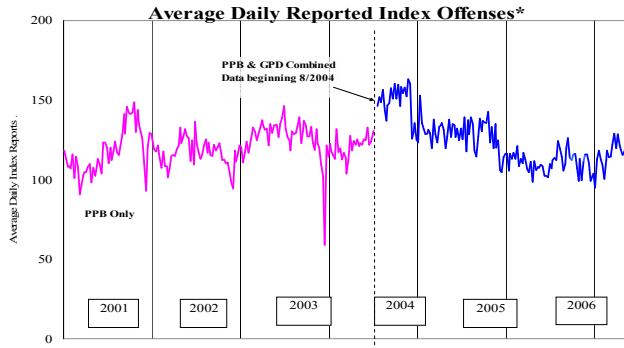


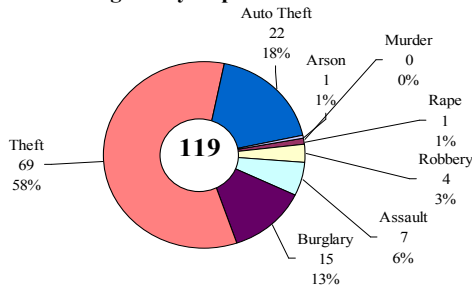
# SAFETY PRIORITY BRIEF: MAY 2007

## Multnomah County: Reported Index Offenses



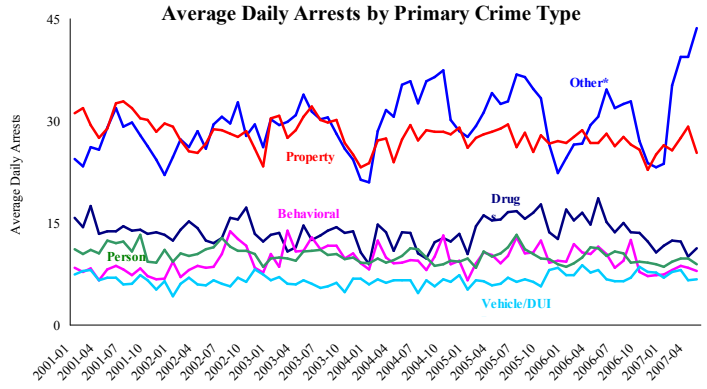
\*The graph reflects the combined weekly index offenses data from Portland Police Bureau (PPB) and Gresham Police Dept (GPD), beginning 8/2004 (line in blue). According to LEADS 2005 data PPB and GPD account for 95% of all offenses county-wide. Index offenses account for about half of all reported offenses.

### Average Daily Reported Index Offenses\*



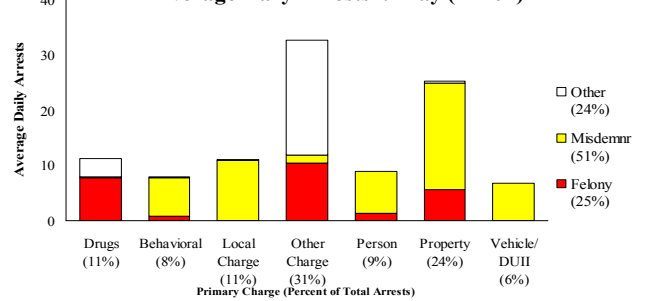
\*Portland and Gresham, combined 4-week moving average for the week ending 5-26-07.

## Multnomah County: Portland Arrests



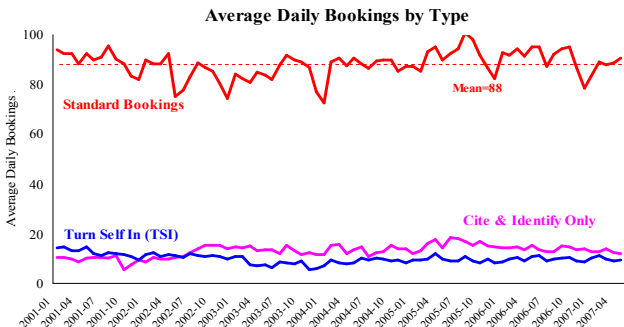
\*Other largely reflects fugitive/warrant charges and local ordinances (DFZ/PFZ). PPB data only, downloaded 6-20-2007.

### Average Daily Arrests\*: May (n=104)



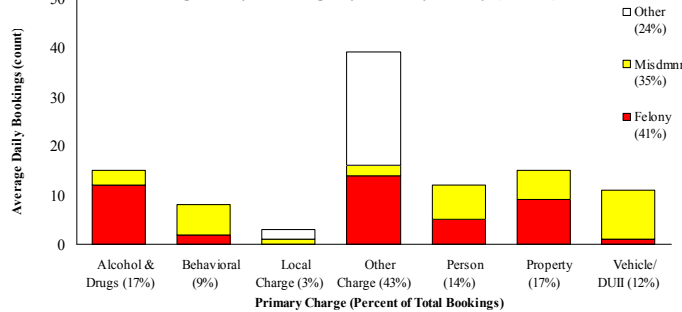
\*There were 3214 arrests in May. Local Charges include drug-free and prostitution free zone

## Sheriff: Bookings



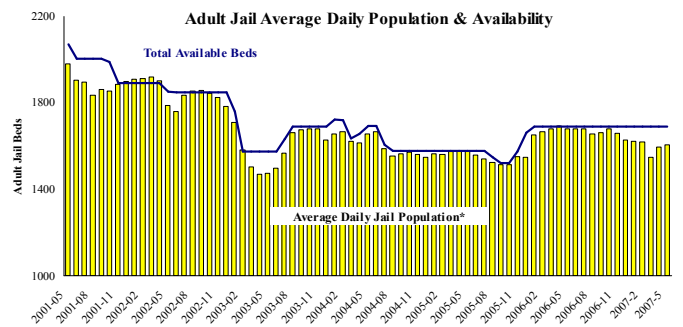
\*In-transit bookings are not reported herein and account for ~4% of all bookings. May's average length of stay (ALS) per booking was 16.95 days.

### Average Daily Bookings by Severity\*: May (n=104)



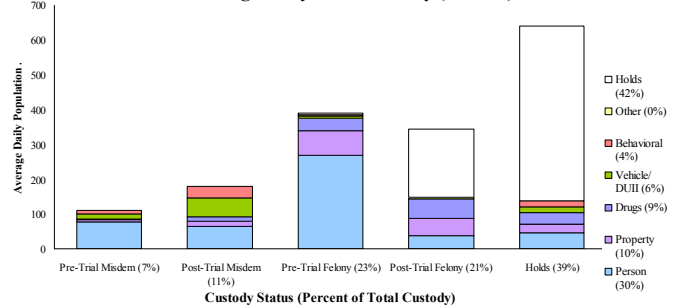
\*Excludes Cite & ID. Total of 3216 bookings (103.7/day) through 5/31/07. Corrections Health reported psych-alerts (16.7/day) for the entire month of May.

## Sheriff: Custody- Adult Jail Beds



\*Excludes in-transit custody classifications. The MCSO reported 41 matrix releases for May 2007 (1.3/day).

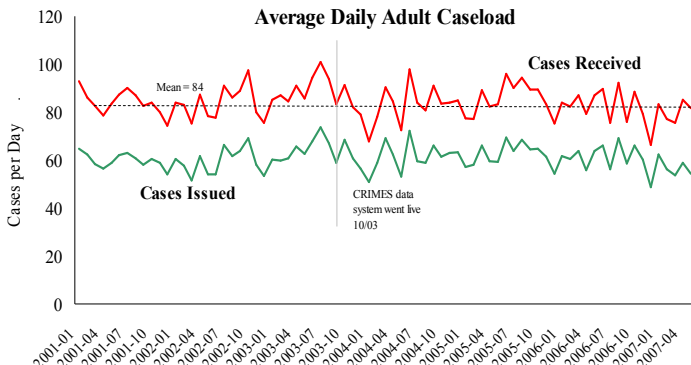
### Average Daily Bed Use: May (n=1658)



Average Daily Jail System Capacity=1690. Average Daily Population (ADP)=1658; there were 32 available beds on any given day.

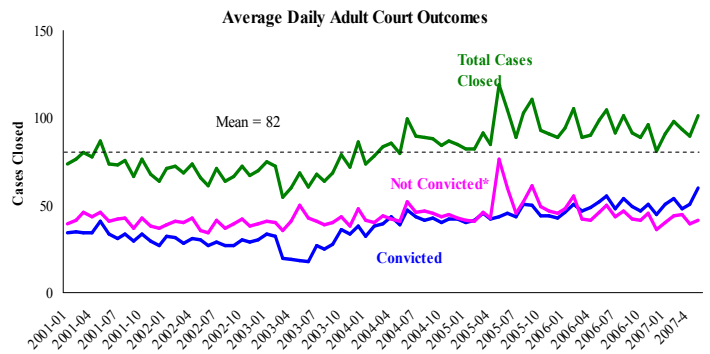
**Notes:** Average Daily Reported Index Offenses dropped from 124 in April to 119 in May; which was driven by the decrease in Theft crimes. At the same time the number of Average Daily Arrests increased from 90 to 104 with Drug and Local Charges making up the bulk of the increase.

## District Attorney: Adult Caseload



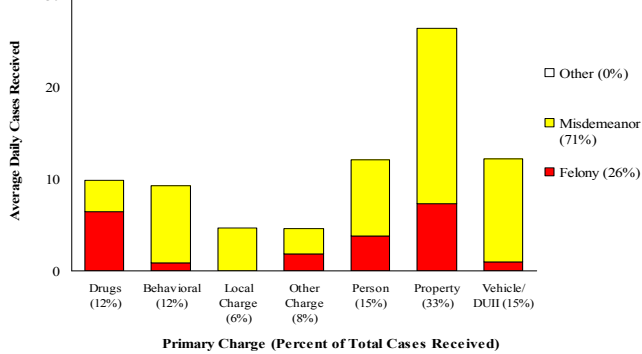
\*Data retrieved 6/27/2007 Note: Many recently received cases are pending review.

## Court Processes: Sentencing Outcomes



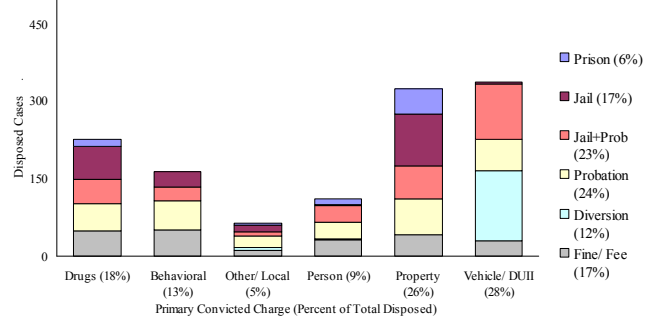
\*Includes dismissed cases (typically 'no complainant') and cases found not guilty. Adult felony and misdemeanor cases only.

### Average Daily Received Cases\*: May (n=82)



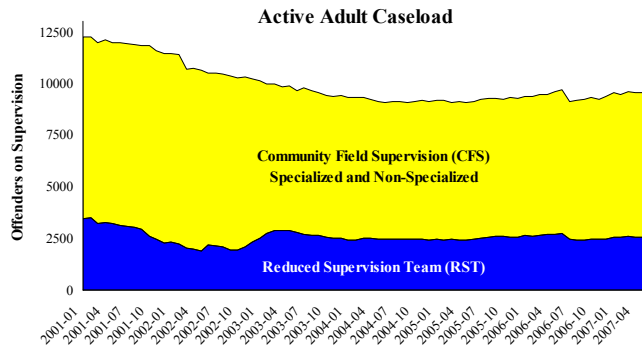
\*May had 2531 received cases as of 6-27-2007 (82/dav). Of those, 271 cases were pending

### Disposition Type by Primary Conviction\*: May 2007

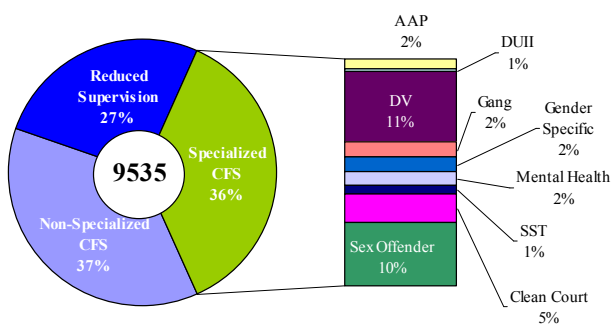


\*Sentenced adult felony and misdemeanors primary convictions only. Primary conviction charge is the most serious charge with a conviction and may differ from the original primary charge. May had 1,846 convictions; 27% were felonies.

## Adult Community Supervision: Caseloads

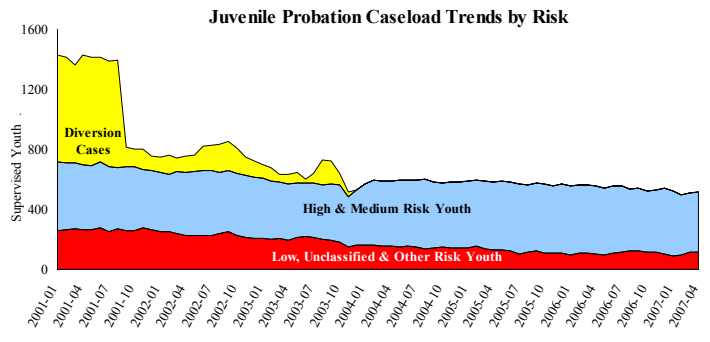


### Adult Active Caseload by Type\*: May 2007

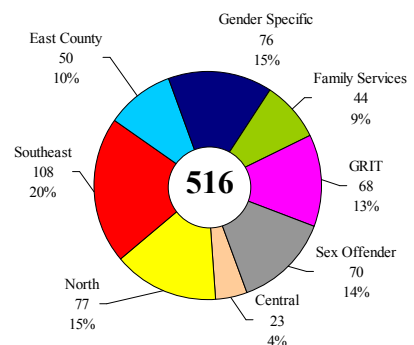


\*Less than 1% are "other" cases which have been included as non-specialized.

## Juvenile Community Supervision: Caseloads



### Juvenile Justice Caseload by Unit\*: April 2007



\*The average caseload per counselor was 22.3 cases for April

**Notes:** The Average Daily Received Cases dropped from 85 in April to 82 in May. However May saw a rise in the number of convictions; from 1,798 in April to 1,846 in May. All categories of convictions increased except for Drug convictions which decreased from 24% of the total to 18%. The increase in the number of Juvenile Community Supervision Caseloads continues from March; rising to 516.