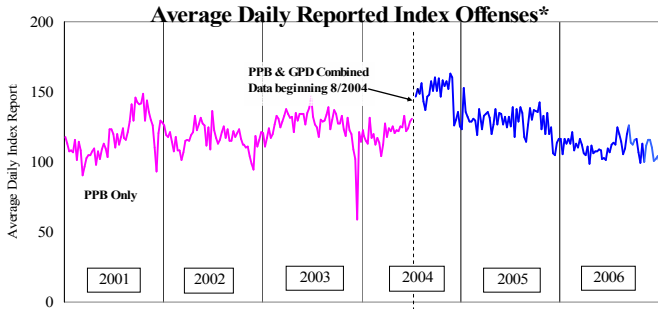


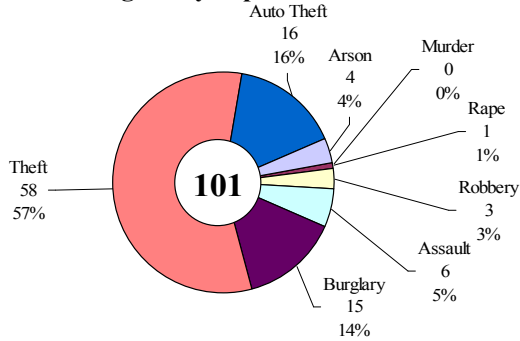
SAFETY PRIORITY BRIEF: JANUARY 2007

Multnomah County: Reported Index Offenses



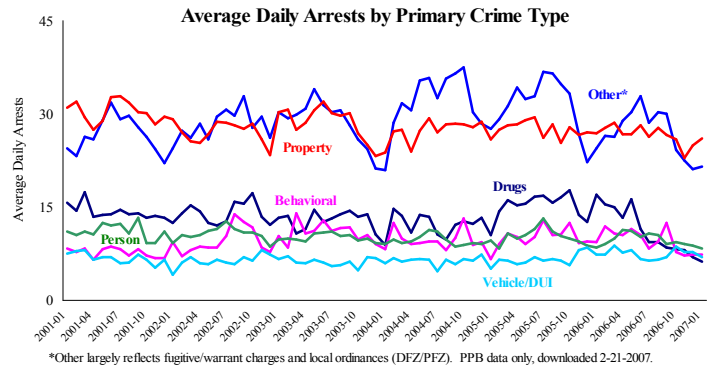
*The graph reflects the combined weekly index offenses data from Portland Police Bureau (PPB) and Gresham Police Dept (GPD), beginning 8/2004 (line in blue). According to LEADS (2005) data PPB and GPD account for 95% of all offenses county-wide. Index offenses account for about half of all reported offenses.

Average Daily Reported Index Offenses*



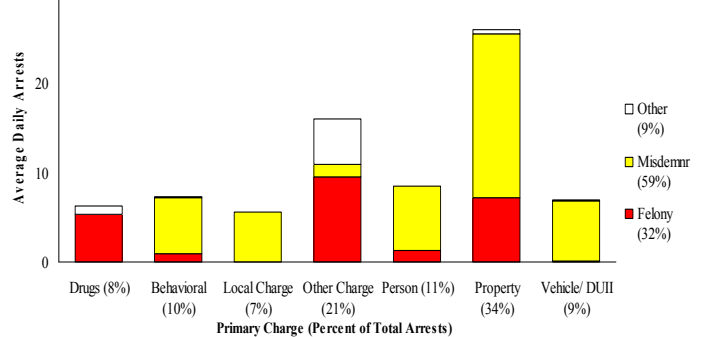
*Portland and Gresham, combined 4-week moving average for the week ending 1-27-07.

Multnomah County: Portland Arrests



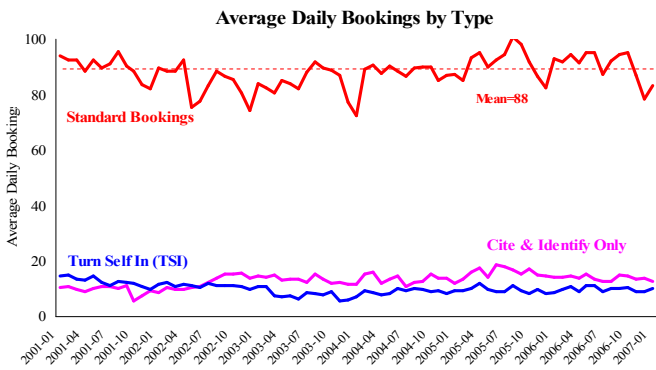
*Other largely reflects fugitive/warrant charges and local ordinances (DFZ/PFZ). PPB data only, downloaded 2-21-2007.

Average Daily Arrests*: January (n=76)



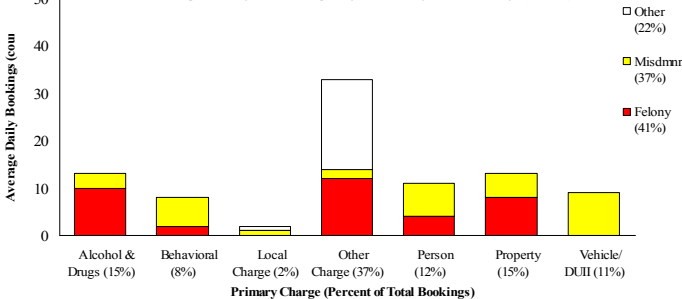
*There were 2,369 arrests in January. Local Charges include drug-free and prostitution free zone violations.

Sheriff: Bookings



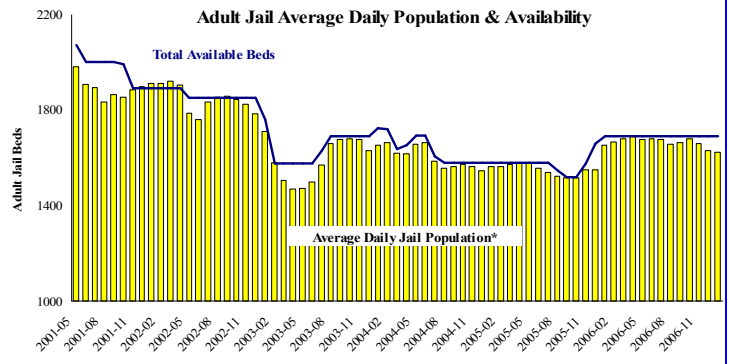
*In-transit bookings are not reported herein and account for ~4% of all bookings. January's average length of stay (ALS) per booking was 19.39 days.

Average Daily Bookings by Severity*: January (n=97)



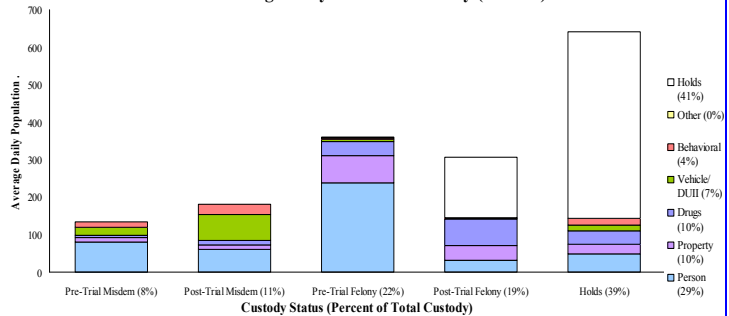
*Excludes Cite & ID. Total of 2996 bookings (97/day) through 1/31/07. Corrections Health reported psych-alerts (16.4/day) for the entire month of January.

Sheriff: Custody- Adult Jail Beds



*Excludes in-transit custody classifications. The MCSO reported 15 matrix releases for January 2006 (0.48/day).

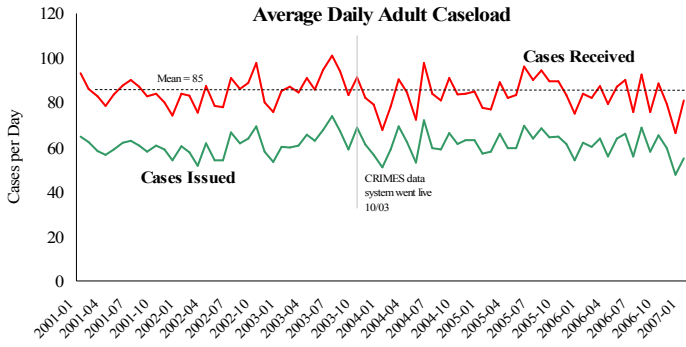
Average Daily Bed Use: January (n=1622)



Average Daily Jail System Capacity=1690. Average Daily Population (ADP)=1622; there were 68 available beds on any given day.

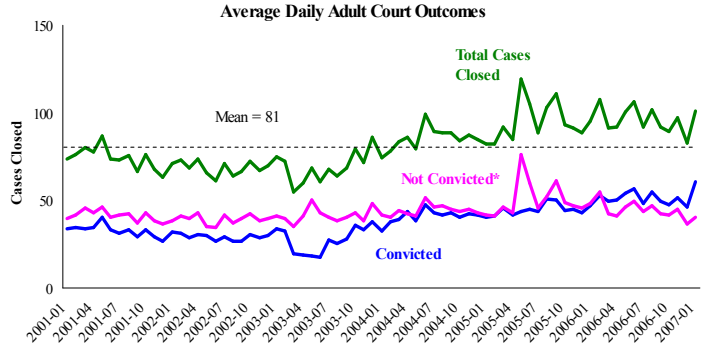
Notes: Average reported daily index offenses decreased 9% from last month. The decrease is driven by a reduction in property crime and arson. The average length of stay per booking (ALS) dropped to 19.39 days. The MCSO reported 15 matrix releases in January (avg. <1/day).

District Attorney: Adult Caseload



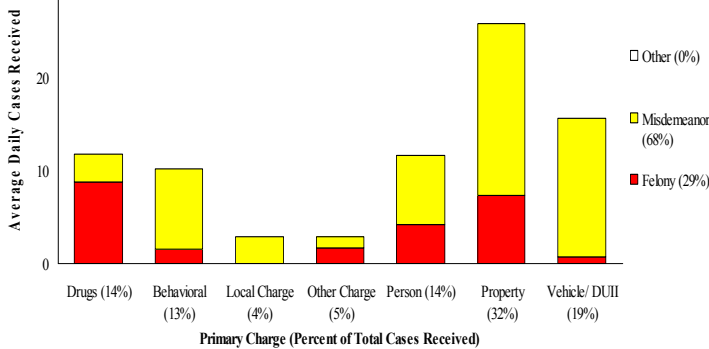
*Data retrieved 2/21/2007. Note: Many recently received cases are pending review.

Court Processes: Sentencing Outcomes



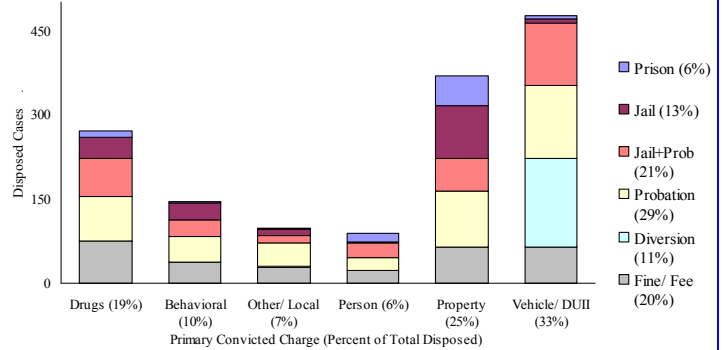
*Includes dismissed cases (typically 'no complainant') and cases found not guilty. Adult felony and misdemeanor cases only.

Average Daily Received Cases*: January (n=83)



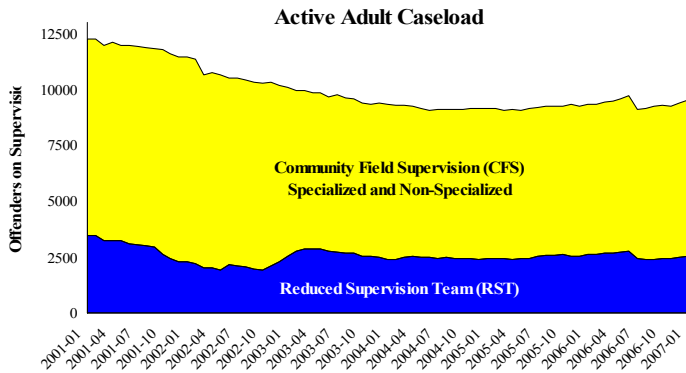
*January had 2586 received cases as of 2-22-2007 (83/day). Of those, no cases were pending review.

Disposition Type by Primary Conviction*: January 2007

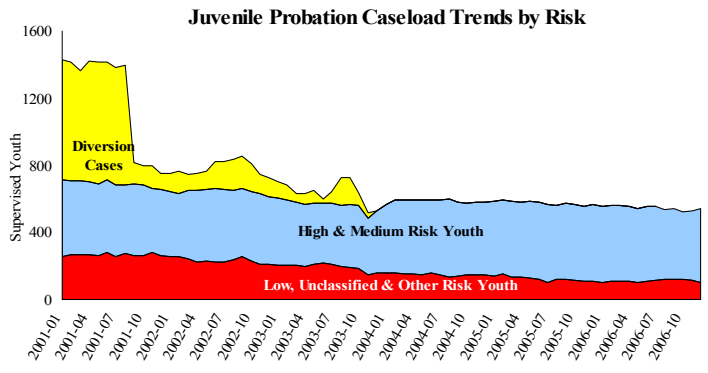


*Sentenced adult felony and misdemeanors primary convictions only. Primary conviction charge is the most serious charge with a conviction and may differ from the original primary charge. January had 1,887 convictions; 27% were felonies.

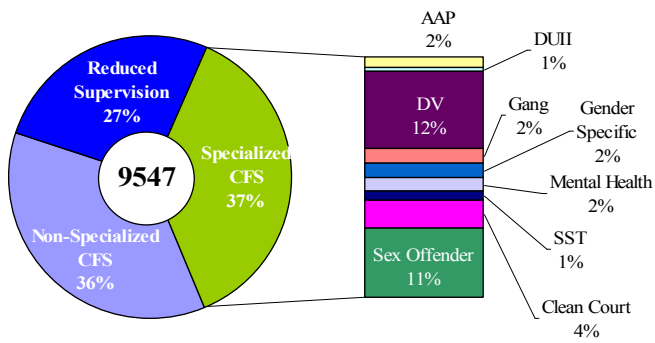
Adult Community Supervision: Caseloads



Juvenile Community Supervision: Caseloads

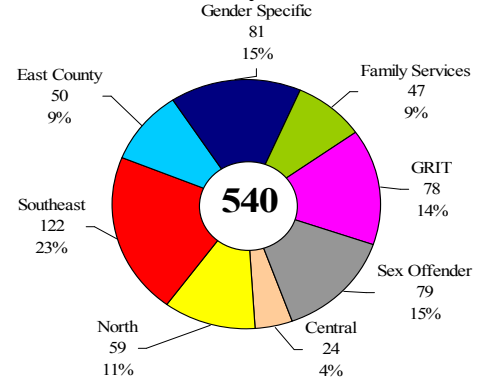


Adult Active Caseload by Type*: January 2007



*Less than 1% are "other" cases which have been included as non-specialized.

Juvenile Justice Caseload by Unit*: December 2006



*The average caseload per counselor was 22.4 cases for December.

Notes: The Adult community supervision caseloads continued to increase in January. The DA *Adult Caseloads* appeared within normal parameters with a 2% increase. DCJ's juvenile caseload is showing signs of increasing risk—the larger *High-Medium Risk* caseloads have increased 10% since November, and are at the highest number since May of 2006.