

# **Factors Affecting School Attendance**

School Success Benchmark Analysis  
Multnomah County Oregon



Department of Support Services

**1998**

*[www.multnomah.lib.or.us/budget/eru/](http://www.multnomah.lib.or.us/budget/eru/)*

# Truancy

*Webster's defines Truancy as:*

☛ the state of being truant

*And also defines as:*

☛ skirting responsibility

☛ vagrant/vagabond

☛ to idle away time...

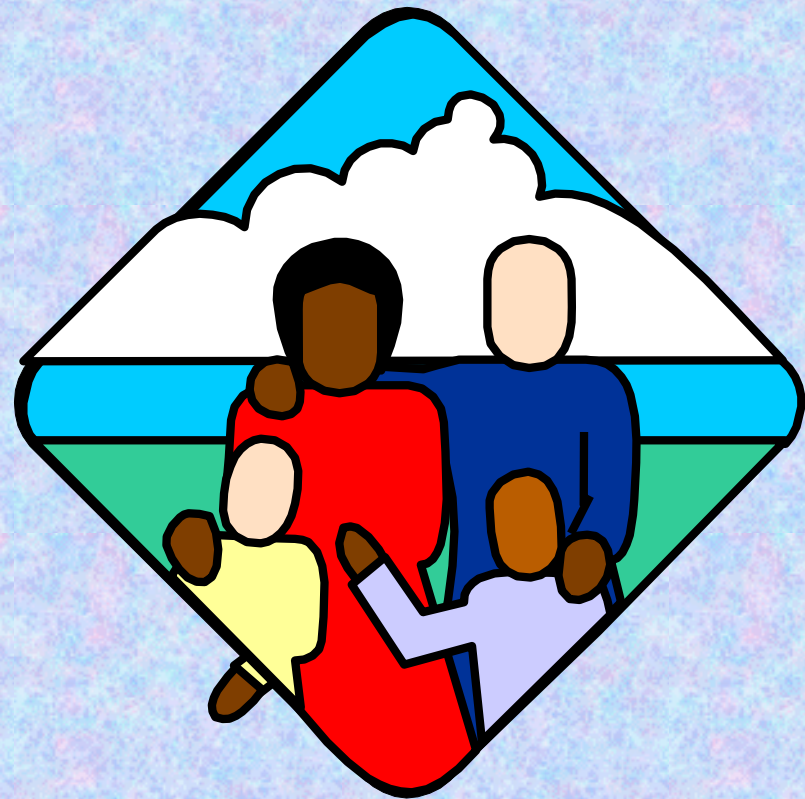
☛ one who stays out of school without permission



# Poor School Attendance

## Parents

- **Lack of responsibility**
- **Inability to discipline**
- **Unusual working hours**
- **Absence from home**
- **Poor education**
- **Mental illness**



# Causes for Poor School Attendance



## Students

- Rebelliousness
- Poor sleeping habits
- Learning disabilities
- Physical maladies
- Boredom



# Truancy Starts



## School Related Difficulties

Scholastic elements

Individual factors

Faculty attitude elements

### Scholastic elements

Lack of basic skills

Low math and reading scores

Failure to pass

### Individual factors

Age

Gifted or talented

Slow learner

### Faculty attitude elements

Lack of respect for student

Lack of encouragement

# Causes for Poor School Attendance

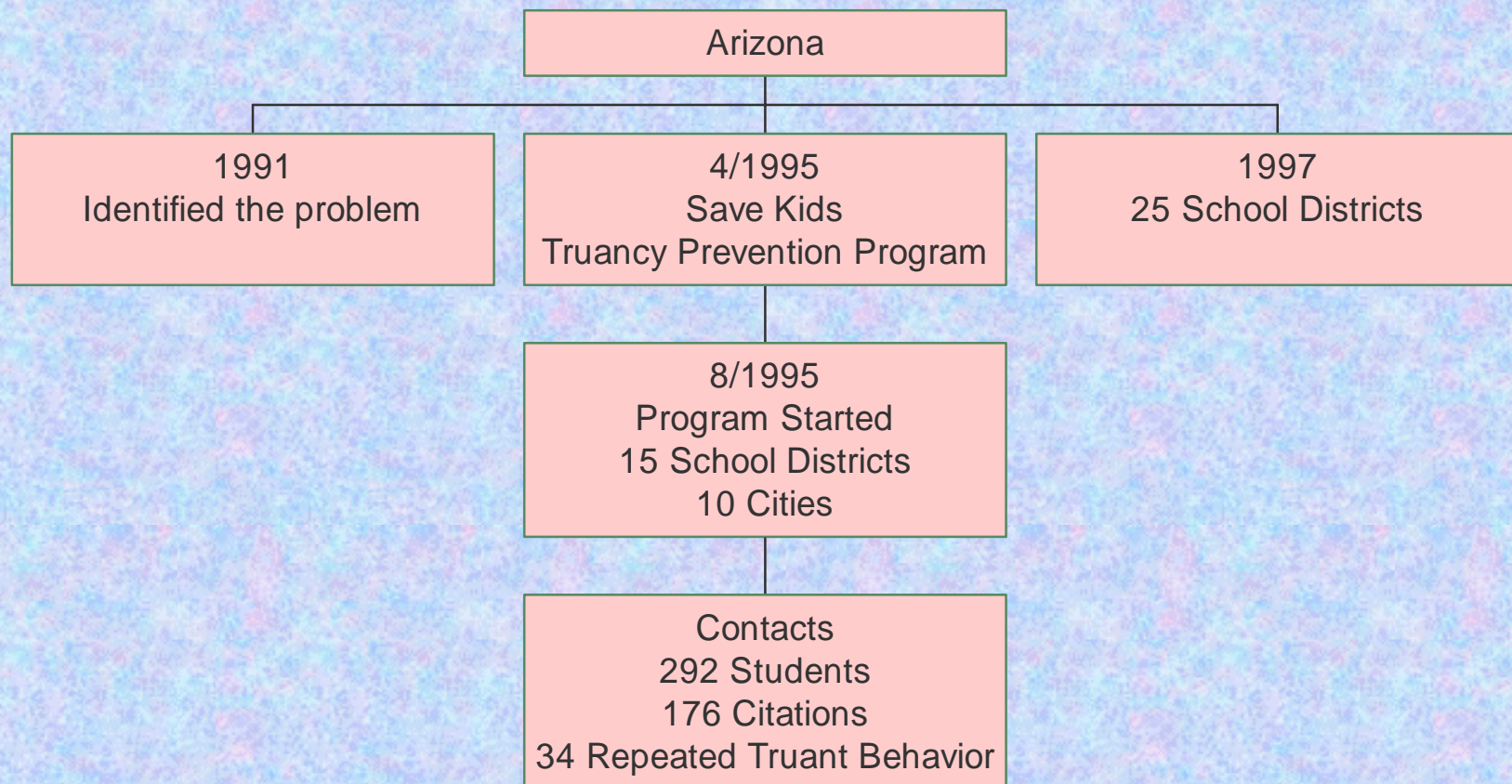
## Environment

- Neighborhood
- Poverty
- Transportation
- Poor nutrition

## Schools

- District
- Curriculum
- Poor teacher-student relationship

# Arizona (Westmarc)



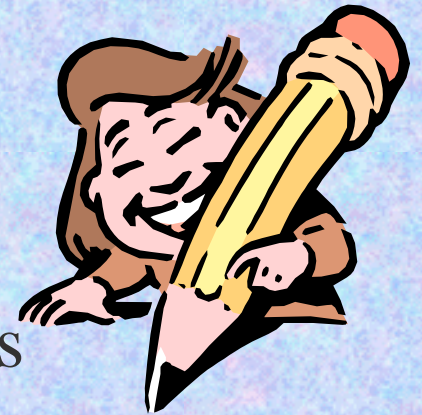
# Well Community Council Pittsburgh, Kansas

- Schools
- Business
- Religious Leaders
- Social Service Workers
- Judges
- Educational Remediation & Enrichment for Students
- Long-Term Family Counseling



# Promote Attendance

- ✿ Make curriculum relevant
- ✿ Make instructional periods more 'project-based activities'
- ✿ Extra support for low performing students
- ✿ Committed teachers with low absentees rates
- ✿ Use of frequent praise
- ✿ Interaction with the whole class
- ✿ Use of open ended questions
- ✿ Minimize verbal and physical reprimands
- ✿ Avoid competition



**Prevention**

**is**

**Cheaper**

**than**

**Correction**