



LPSCC PUBLIC SAFETY BRIEF

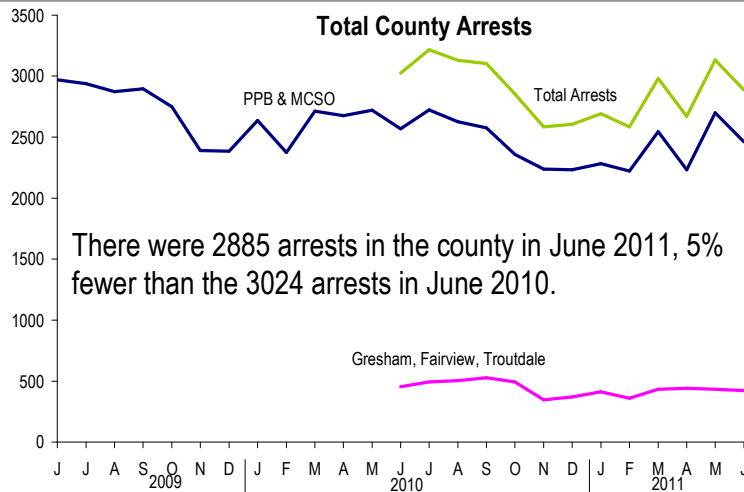
MAY / JUNE 2011



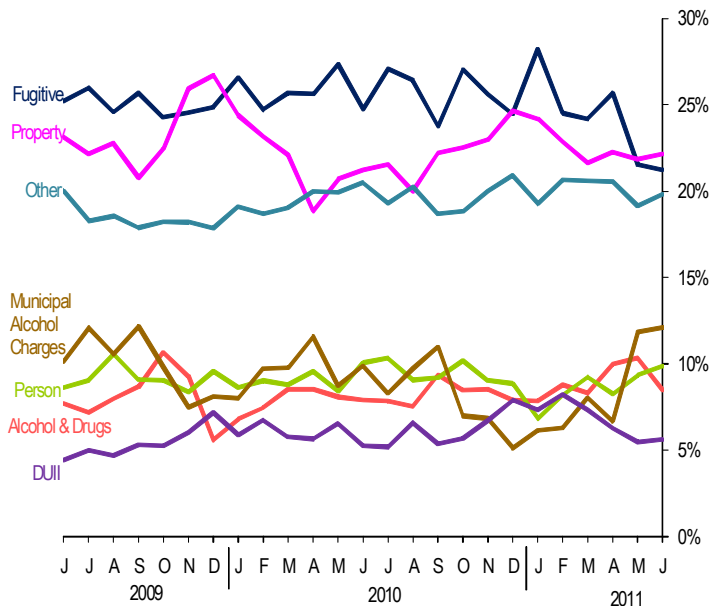
Arrests, by Agency and Type (primary charge)

June 2011 Arrests per 100,000 residents	Portland Police	Gresham Police	Troutdale Police	Fairview Police	All Multnomah County
<i>City Population (2010 census)</i>	583,776	105,594	15,962	8,920	735,334
Property	91	76	69	11	87
Fugitive	74	84	119	11	86
Alcohol & Drugs	35	36	25	11	34
Behavioral	36	44	25	11	36
Person	41	57	50	34	43
Other	35	9	31	0	31
Municipal Alcohol Charges	51	3	NA	NA	41
DUII	21	18	19	45	22
Vehicle w/o DUII	10	10	19	11	11

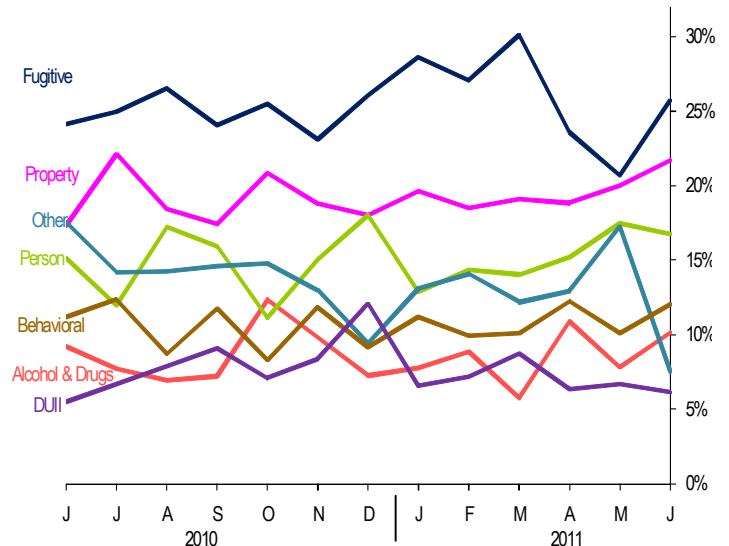
"All Multnomah County" includes arrests made by the MCSO and all city police agencies. The population includes unincorporated areas of Multnomah County and all cities.



**Portland (PPB & MCSO)
Arrests by Type**



**East County (Gresham, Troutdale, Fairview)
Arrests by Type**





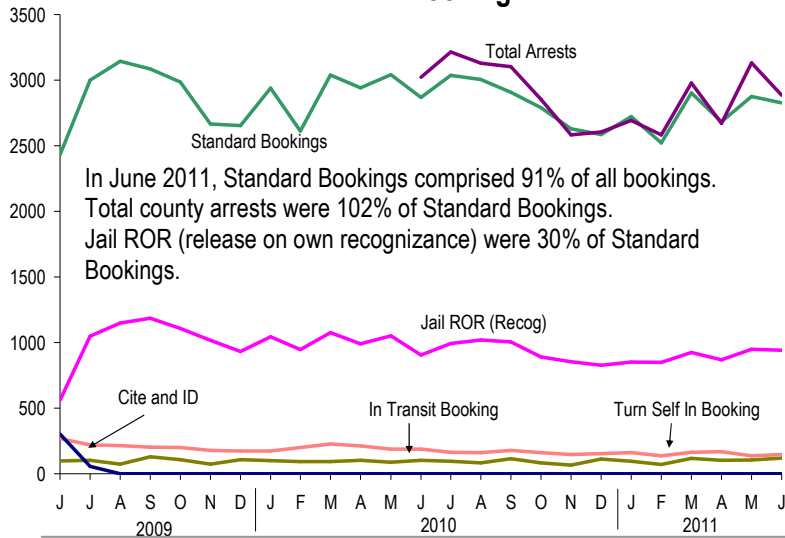
LPSCC PUBLIC SAFETY BRIEF

MAY / JUNE 2011



Multnomah County Jail: Booking, Custody, Release

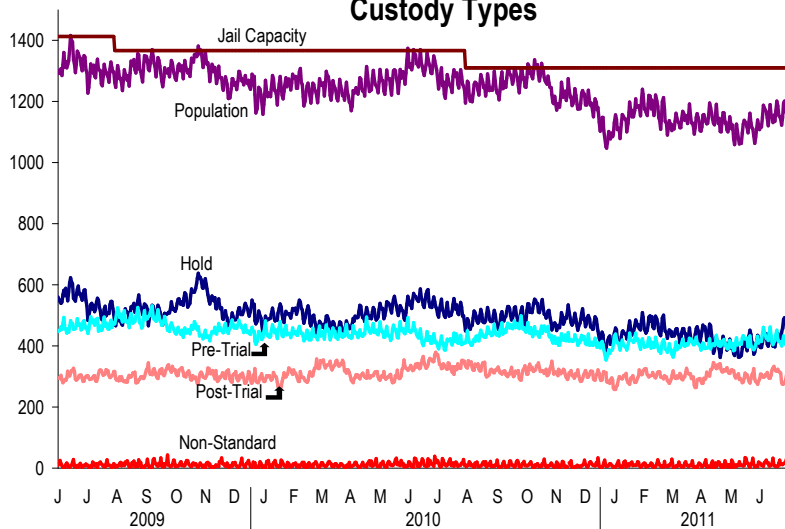
Booking



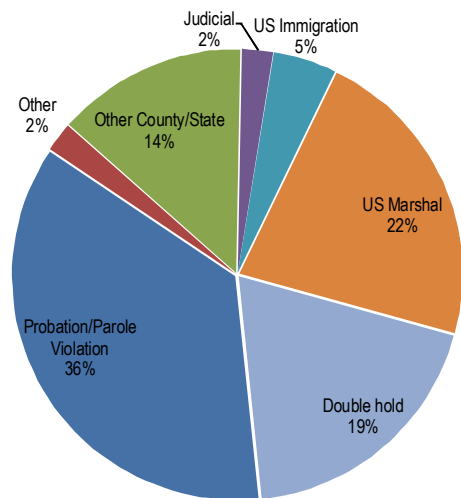
Booking Origin, by Arresting Agency

May/June 2011 Agency	Arrests	Standard Bookings	Percent
MCSO	426	249	58%
Portland Police	5219	2026	39%
Gresham Police	796	257	32%
Troutdale Police	108	24	22%
Fairview Police	36	5	14%
Other Agencies	NA	1714	NA

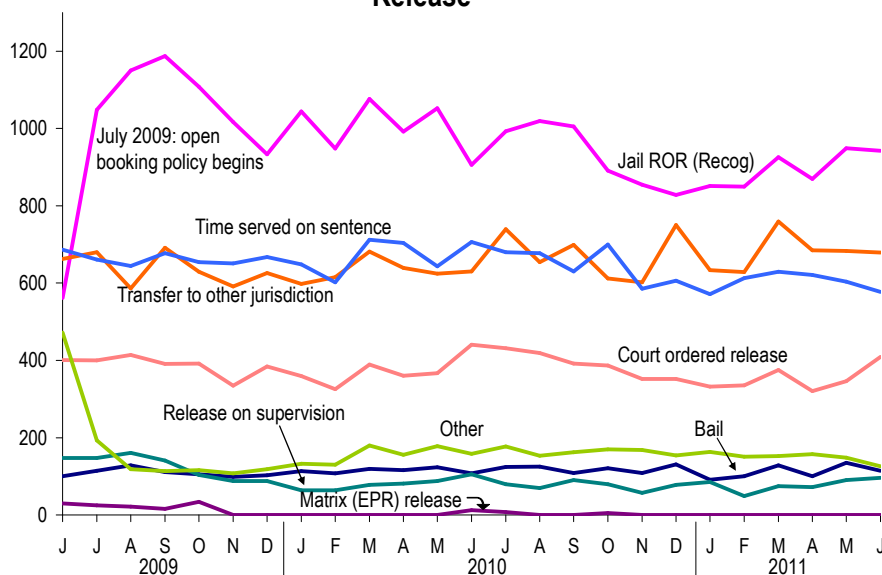
Custody Types



Hold Type Averages for June 2011



Release



In September 2010, the MCSO established a process whereby Dorm 3, with 57 beds, could be opened to avoid conducting Emergency Population Releases. It was not necessary to open Dorm 3 in May or June 2011.



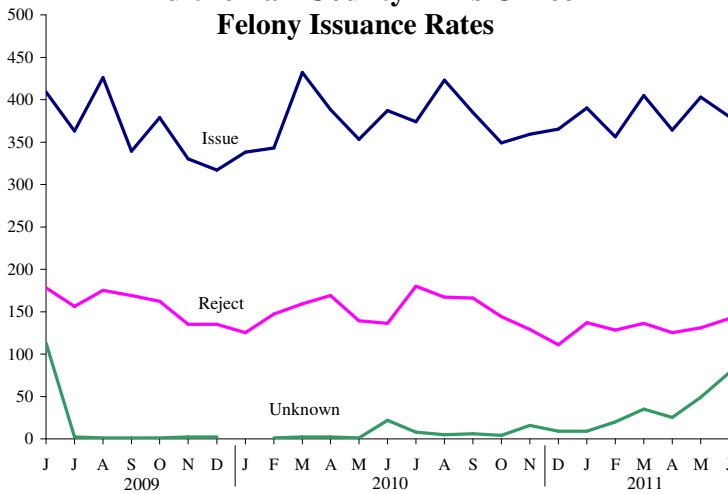
LPSCC PUBLIC SAFETY BRIEF

MAY / JUNE 2011

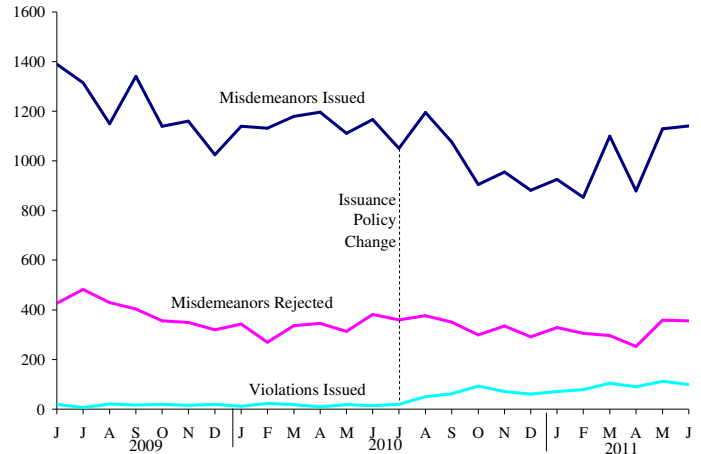


District Attorney: Issuance Rates

Multnomah County DA's Office Felony Issuance Rates



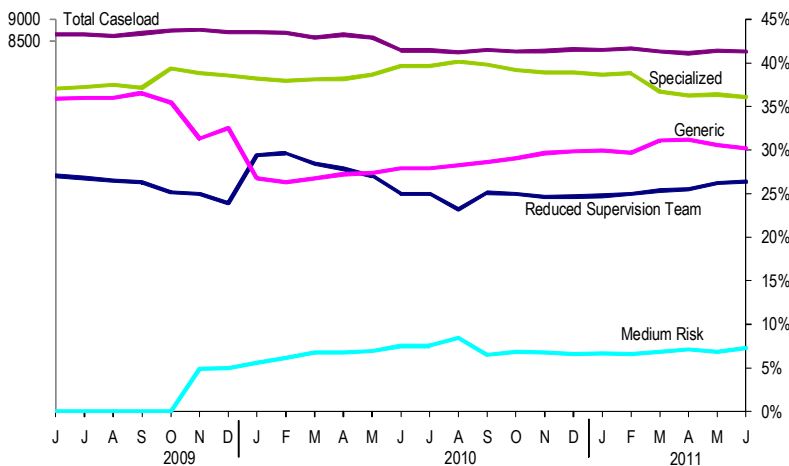
Misdemeanor and Violation Issuance



A policy change in July 2010 shifted prosecution of some lower-level misdemeanors to violations.

Department of Community Justice: Active Adult Caseloads

DCJ Adult Active Caseloads



Disclaimer: Agency data reproduced in this report is selected to display Multnomah County criminal justice system patterns and should not be used to evaluate individual agency workloads or performance. Unless otherwise noted, the data in this document was collected from DSS-Justice, Multnomah County's public safety data warehouse. This report is produced by staff to Multnomah County's Local Public Safety Coordinating Council (LPSCC). Questions or suggestions can be directed to Matthew.g.okeefe@multco.us and Thomas.Bode@multco.us.