

# Voting is as Easy as 1 – 2 – 3

## Instructions for completing your ballot.

### 1. Examine your official ballot and vote it.

Examine your Official Ballot. Locate the candidate or measure response (YES or NO) of your choice for each contest. To vote, you must completely darken the oval to the left of the response of your choice with black or blue ink.

To vote for a write-in candidate, one whose name does not appear on the Official Ballot, completely darken the oval to the left of the solid line provided for the office and write the full name of the candidate on that line.

**Remember:** If you vote for more than the number of candidates allowed for an office, or you vote both YES and NO on a measure, it is called an OVERVOTE, and your vote for that position or measure will NOT be counted.

### 2. Review your ballot and prepare to return it.

Ensure you have correctly marked your choice for each contest. Your official ballot will contain contests printed on both front and back.

If you make an error on your ballot, damage it in any way or lose it, contact the Multnomah County Elections Division at 503-988-3720 to request assistance.

**Prepare to return your voted ballot.** Place the ballot in the return envelope. You may use the optional secrecy envelope, but it is not required. Election staff will ensure the secrecy of your ballot.

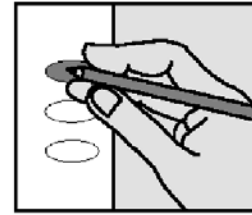
**Remember: Read the Voter's Statement on the return envelope and sign it on the signature line.** Your ballot will not be counted if the return envelope is not signed. Every signature is checked against the registration signature on file and the signature must match for the ballot to be counted.

### 3. Return your ballot.

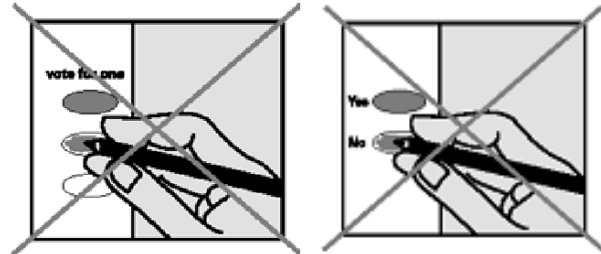
- **By mail:** Attach first-class postage to the signed and sealed return identification envelope. Mail it as soon as possible to arrive at the Multnomah County Elections Division no later than 8:00 p.m. on Election Day. A postmark does not count!
- **In person at an official drop site:** Deliver the signed and sealed return identification envelope to any official drop site no later than 8:00 p.m. on Election Day. Postage is NOT required if delivered to an official ballot drop box location.

## check your ballot!

Make sure you have completely filled in the oval next to your choices.



If you vote for more candidates than allowed or if you vote **both** Yes **and** No on a measure, it is called an overvote. Your vote **will not count** for that candidate or measure.



You don't have to vote in all contests. Your other votes will still count.

You cannot change your vote once you've mailed or dropped off your ballot.

Contact Multnomah County Elections Division to request assistance if:

- you make a mistake
- your ballot is damaged
- your ballot is lost

or for any other reason.

Contact: Multnomah County Elections Division  
phone: 503-988-3720  
website: [www.mcelections.org](http://www.mcelections.org)  
email: [elections@multco.us](mailto:elections@multco.us)  
Oregon Relay Service: 1-800-735-2900  
Skype: multnomah.county.elections

