

Portland Police Bureau



LPSCC Presentation





Total Part I Crimes

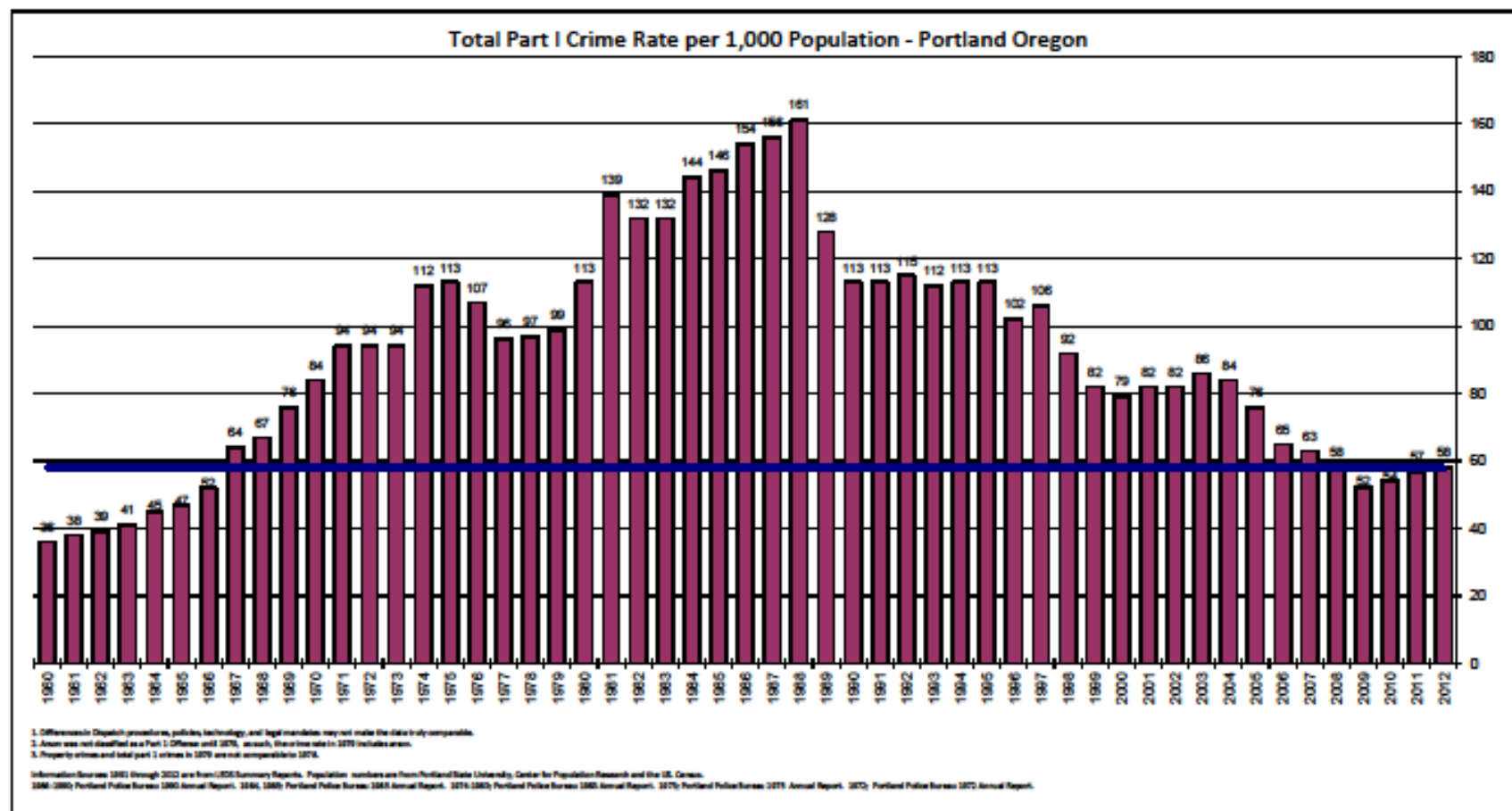
	<u>2012</u>	<u>2013</u>	<u>% change</u>
• Total Part I crimes	34,006	32,636	-5
• Rate per 1000 pop.	58	55	
• Residents	587,865	592,120	0.72



Total Part 1 Crimes

	<u>2012</u>	<u>2013</u>	<u>% change</u>
• Murder	25	15*	-40
	<i>*Lowest since 1967 (14 homicides)</i>		
• Rape	208	226	9
• Robbery	976	909	-7
• Aggravated assault	1,897	1,749	-8
• Burglary	4,538	4,030	-11
• Larceny	22,658	22,217	-2
• Motor vehicle theft	3,623	3,312	-9
• Arson	234	178	-
24			

Portland Police Bureau
Reported Part I Crime Rates
1960 - 2012





Traffic Fatalities - 2013

Total: 35

- Pedestrian: 10
- Motorcycle: 4
- Motor vehicle: 21
- Bicycle: 0



Drug-related deaths

Multnomah County

- **2011: 119**
- **2012: 103***

** Heroin was noted in 80 percent of these deaths.*



Other concerns...

What we're not measuring

- Social disorder
- Homelessness
- Drug addiction
- Mental health issues

Fear of Crime

Prosper Portland



What is Prosper Portland?

- **Holistic, collaborative strategy to create a safe, healthy community.**
- **Partners: Law enforcement, city & county agencies, social services, community and business partners.**



Prosper Portland



**Walking
beats & MPU**

**Service
Coordination
Team/BHU**

DDA/Parole & Probation funding?

**Supportive
housing options**

NLCEP

**PDC
Development**

Partners

**Clean-up
vendor**

**Sidewalk/street
management**

**Public space
consistency**

Specialty courts

**Walking
beats & MPU**

Service
Coordination
Team/BHU
DDA/Parole & Probation funding?

PPB efforts...

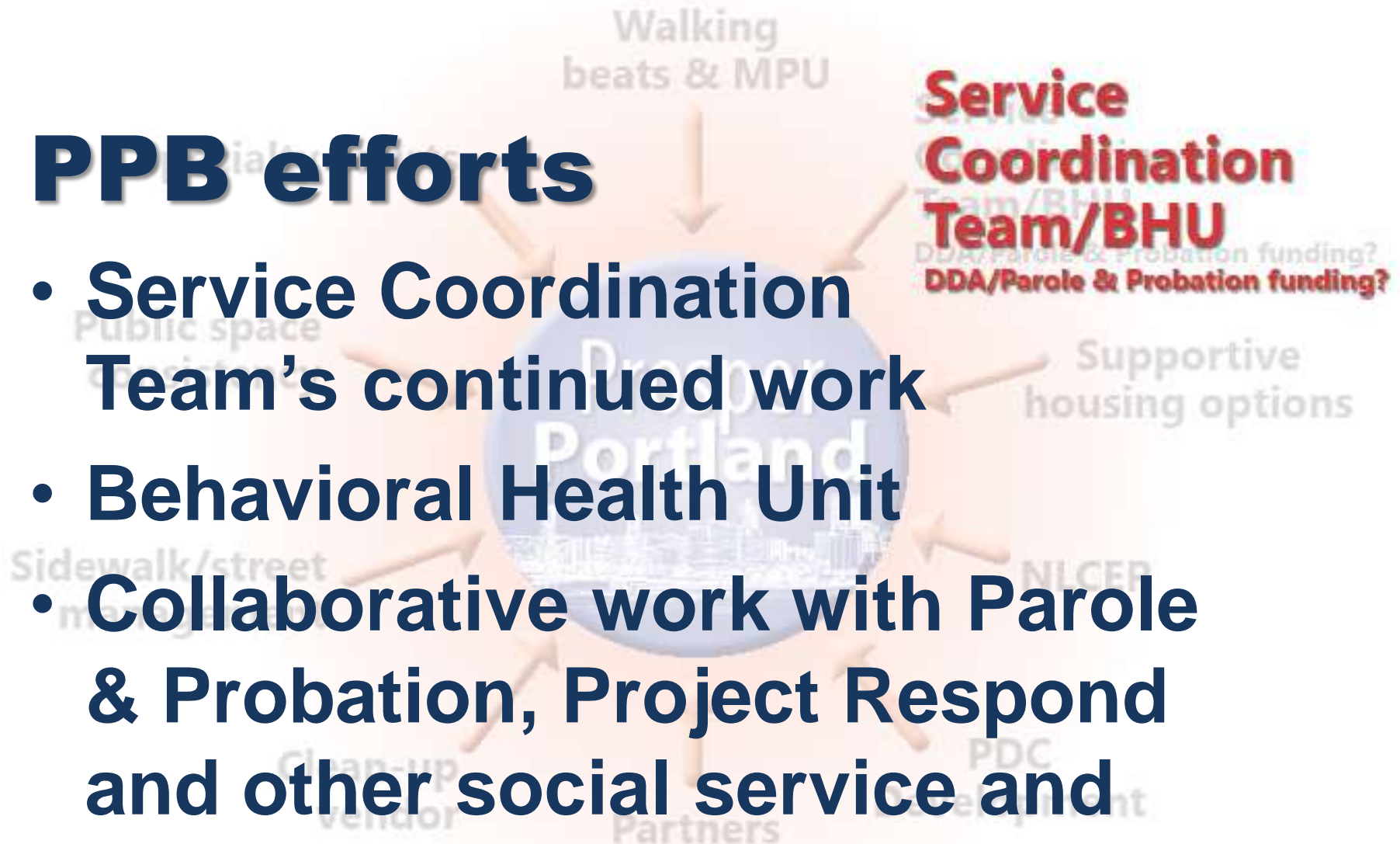
- **Central Precinct walking beats**

- **Mounted patrol**

Focus: Neighborhood livability.

PPB efforts

- Service Coordination Team's continued work
- Behavioral Health Unit
- Collaborative work with Parole & Probation, Project Respond and other social service and mental health partners.





- **Car prowl prevention**

- **CPTED**

- **Alcove abatement**

- **Right-of-way**

- **All have proven effective in deterring crime and affecting livability.**



- **Old Town/China Town**





The diagram features a central blue circle with the text "Prosper Portland" and a city skyline. Surrounding this circle are twelve orange arrows pointing inward, each labeled with a partner organization or initiative. The labels are: "Walking beats & MPU" (top), "Service Coordination Team/BHU" (top-right), "DDA/Parole & Probation funding?" (right), "Supportive housing options" (bottom-right), "NLCEP" (bottom), "PDC Development" (bottom-left), "Clean-up vendor" (left), "Sidewalk management" (top-left), "Public space consistency" (top), "Specialty courts" (top-left), and "Walking beats & MPU" (top). The word "Partners" is written in red at the bottom center.

- **Social service providers**

- **Bureau partners**

- **Community members**

Partners

- **Social enterprise**
- **Downtown Clean & Safe**



- **Enforcement tools**
- **Eastside clean-up and enforcement**
- **Structures**

**Sidewalk/street
management**

Clean-up
vendor

Partners

PDC
Development

NLCEP

Supportive
housing options

Coordination
DDA/Parole & Probation funding?

Specialty courts

Walking



Prosper
Portland

Walking
beats & MPU

Service
Coordination

DDA/Parole & Probation funding?

Supportive
housing options

NLCEP

PDC
Development

Partners

Clean-up
vendor

Sidewalk/street
management

Public space
consistency

Specialty courts

• ODOT

• PBOT

• Parks

• Mult. Co.

Specialty contractor

Public space consistency

Sidewalk/street management

Clean-up vendor

Partners

PDC Development



Walking

hwy 8 MAP

Specialty cour

Public space consistency

Sidewalk/street
management

Clean-up
vendor

Partners

Development



Walking

Specialty courts

Public space consistency

Sidewalk/street
management

Clean-up
vendor

Partners

Development



Public space consistency



Sidewalk/street management

Clean-up vendor

Partners

Development

Specialty cou

Public space consistency

Sidewalk/street management

Clean-
vend





Public space consistency

Sidewalk/street management

Service
Coordination
m/BHU
/Parole & Probation funding?

Supportive housing options

NLCEP

PD
Development

Walking
beats & MPU

Skidmore Fountain area

Specialty courts

Coordination
Team/BHU

**Public space
consistency**

Sidewalk/street
management

Clear
view



Specialty courts

- **START Court**
- **STOP Court**
- **Community Court**
- **Mental Health Court**



Funding

- **House Bill 3194**
- **Portland City Council**
- **Private development**
- **Job training entities**



What can LPSCC do?

Endorse strategy and prioritize

- **Specialty Courts**
- **Public Space Consistency**
- **Sidewalk / Street Management**

How do we measure improvement?





PROSPER PORTLAND

61.8

Weighted
Performance
Index



35% | 64.0

Community
Education &
Engagement

15% | 83

Strategic
Legal &
Policy
Reforms

10% | 64

Service
Coordination
Team

20% | 46



Rehabilitatio
n Services
and Support

25% | 71

Housing and
Feeding
Programs

15% | 59

Code
Compliance
Programs

15% | 59



40% | 64.5

Community
Education &
Engagement

10% | 98

Strategic
Legal &
Policy
Reforms

10% | 85

Partnership
of Police and
Probation

15% | 77

Chronic
Offender
List

20% | 63

Walking
Beat
Detail

20% | 41



Burglary
Task
Force

15% | 74

Code
Compliance
Programs

10% | 27



25% | 54.2

Community
Education &
Engagement

15% | 78

Strategic
Legal &
Policy
Reforms

10% | 60

CPED
Improvement
Projects

35% | 39



Code
Compliance
Programs

20% | 87

Housing
Facilities and
Capacity

20% | 27



Indicates lagging performance compared to established benchmark



Questions?

**Prosper
Portland**

