



Elections Division

VOTERS' PAMPHLET



GENERAL ELECTION

November 4, 2014



ATTENTION

This is the beginning of your county voters' pamphlet. The county portion of this joint voters' pamphlet is inserted in the center of the state portion. Each page of the county voters' pamphlet is clearly marked with a color bar on the outside edge. All information contained in the county portion of this pamphlet has been assembled and printed by your County Elections office.

This pamphlet produced by Multnomah County Elections Division, 1040 SE Morrison St. Portland OR 97214. 503-988-3720. www.mcelections.org

Dear Multnomah County Voter:

This part of your Voters' Pamphlet is provided by Multnomah County Elections Division. It includes information about candidates and measures from local jurisdictions within the boundaries of Multnomah County. We have inserted the County's Voter Pamphlet to save on mailing and production costs. The State Pamphlet (on either side of the color bar portion) includes federal and state candidates and measures.

Here are a few things you should know:

- You can view your registration status by visiting MyVote at www.oregonvotes.gov. There you can check or update your voter registration or track your ballot.
- **Ballots will be mailed beginning on Wednesday, October 15, 2014.**
- Not all the candidates or measures in this Voters' Pamphlet will be on your ballot. Your residence address determines those districts for which you may vote. Your official ballot will contain the candidates and issues which apply to your residence.
- Voted ballots **MUST** be received at any County Elections Office or official drop site location in Oregon by **8:00 PM, Tuesday, November 4, 2014** to be counted
- This Voters' Pamphlet is on our website: www.mcelections.org. Starting at 8:00 PM on election night, preliminary election results will be posted on our website and updated throughout the evening.

If you have any questions you can contact our office at: 503-988-3720.

Sincerely,



Tim Scott

Multnomah County Director of Elections

PLEASE NOTE: Multnomah County Elections prints information as submitted. We do not correct spelling, punctuation, grammar, syntax, errors or inaccurate information.

Reading the voters' pamphlet



This part of your Voters' Pamphlet is provided by Multnomah County Elections Division. It includes information about candidates and measures from local jurisdictions within the boundaries of Multnomah County. We have inserted this County Pamphlet to save on mailing and production costs. The State Pamphlet (on either side of the color bar portion) includes federal and state candidates and measures.

You'll find statements provided by candidates running for office. Not all candidates submitted a statement. You'll also find ballot measures and measure arguments. Keep in mind that Multnomah County Elections does not write or edit these statements. Multnomah County Elections does not fact check or correct punctuation, grammar, syntax errors or inaccurate information.

You can view your registration status by visiting My Vote at www.oregonvotes.gov. There you can check or update your voter registration or track your ballot

Ballots will be mailed beginning on Wednesday, October 15, 2014. Look for the ballot soon after. If you don't receive your ballot by Thursday, October 23, 2014, please call Multnomah County Elections at 503-988-3720.

Table of contents

General Information

Letter to voter.....	M-01
Reading the voters' pamphlet and table of contents.....	M-02
Index of candidates and measures.....	M-03
Voting is as easy as 1 – 2 – 3.....	M-04
Returning your ballot.....	M-05



Candidates

City of Fairview

Mayor.....	M-07
Council, Pos. 2.....	M-09
Council, Pos. 4.....	M-10
Council, Pos. 5.....	M-11
Council, Pos. 6.....	M-12

City of Gresham

Mayor & Council, Pos 2.....	M-13
Council, Pos. 4.....	M-14
Council, Pos. 6.....	M-15

City of Lake Oswego

City Councilor.....	M-16
---------------------	------

City of Maywood Park

Council.....	M-18
--------------	------

City of Troutdale

Councilor, Pos. 1.....	M-19
Councilor, Pos. 3.....	M-20
Councilor, Pos. 5.....	M-21

East Multnomah SWCD

Director, At Large 2 & Zone 3.....	M-22
------------------------------------	------

West Multnomah SWCD

Director, At Large 1 & At Large 2.....	M-23
Director, Zone 5.....	M-24

Measures

City of Lake Oswego

Measure 3-452.....	M-26
Argument in Favor.....	M-27

City of Portland

Measure 26-159.....	M-28
Arguments in Favor.....	M-29

Metro

Measure 26-160.....	M-34
---------------------	------

Portland School District #1JT

Measure 26-161.....	M-35
Arguments in Favor.....	M-36

Sauvie Island RFPD #30JT

Measure 26-162.....	M-40
Argument in Favor.....	M-41

Corbett School District

Measure 26-163.....	M-42
Argument in Opposition.....	M-43

Your vote counts!



Index of local Candidates on the Ballot



Below is an alphabetical list of all local city, soil & water and PUD candidates on the ballot. Not all candidates on the ballot filed a Voters' Pamphlet statement. If a candidate filed a statement, the page number is listed. Not all the candidates or measures in this Voters' Pamphlet will be on your ballot. Your residence address determines those districts for which you may vote. Your official ballot will contain the candidates and issues which apply to your residence.

Candidate Name (last, first)	Page Number
Allen, Rich.....	M-21
Arnold, Tamie.....	<i>no statement filed</i>
Barton Mullins, Lisa	M-07
Bemis, Shane.....	M-13
Bhullar, Balwant	M-09
Brockman, Ed.....	M-16
Buck, Joe.....	M-17
Burnett, Curtis.....	M-08
Burrow, Bob.....	<i>no statement filed</i>
Castor, Matthew.....	M-18
Cochran, Jennie.....	M-14
Cooper, Brian.....	M-12
Dixon, Larry.....	<i>no statement filed</i>
Doolin, Andrew.....	<i>no statement filed</i>
Eppley, Ray.....	M-21
French, Kirk.....	M-13
Golan, Yuval.....	<i>no statement filed</i>
Gudman, Jeff.....	M-17
Guebert, Michael.....	M-22
Hardie, Mark.....	<i>no statement filed</i>
Keenen, Matt.....	<i>no statement filed</i>
Kotsakis, Ted.....	M-10
Kudrna, Keith.....	M-11
Looney, Shawn.....	M-23
Manz, Jackie.....	M-16
McAdams, Nellie.....	M-22
McCarthy, Donald James.....	<i>no statement filed</i>
Miller, Weston.....	M-23
Moore, Leslie.....	M-10
Morgan, Larry.....	M-20
Moriarty, Josh.....	M-19
Owen, Steve.....	M-09
Palmero, Mario.....	M-14
Preeg Riggsby, Terri.....	M-24
Rieff, Mel.....	<i>no statement filed</i>
Ripma, David.....	M-19
Schulz, Terry.....	<i>no statement filed</i>
Snodgrass, Dave.....	<i>no statement filed</i>
Stegmann, Lori.....	M-15
Thomas, Norm.....	M-20
Tosterud, Ted.....	M-07
Voruz, Natalie.....	M-11



Multnomah County Elections
1040 SE Morrison St.
Portland OR 97214

Phone: 503-988-3720
Fax: 503-988-3719

E-mail: elections@multco.us

Website: www.mcelections.org

Twitter: [@MultCoElections](https://twitter.com/MultCoElections)



Voting is as Easy as 1 – 2 – 3

Instructions for completing your ballot.

1. Examine your official ballot and vote it.

Examine your Official Ballot. Locate the candidate or measure response (YES or NO) of your choice for each contest. To vote, you must completely darken the oval to the left of the response of your choice with black or blue ink.

To vote for a write-in candidate, one whose name does not appear on the Official Ballot, completely darken the oval to the left of the solid line provided for the office and write the full name of the candidate on that line.

Remember: If you vote for more than the number of candidates allowed for an office, or you vote both YES and NO on a measure, it is called an OVERVOTE, and your vote for that position or measure will NOT be counted.

2. Review your ballot and prepare to return it.

Ensure you have correctly marked your choice for each contest. Your official ballot will contain contests printed on both front and back.

If you make an error on your ballot, damage it in any way or lose it, contact the Multnomah County Elections Division at 503-988-3720 to request assistance.

Prepare to return your voted ballot. Place the ballot in the return envelope. You may use the optional secrecy envelope, but it is not required. Election staff will ensure the secrecy of your ballot.

Remember: Read the Voter's Statement on the return envelope and sign it on the signature line.

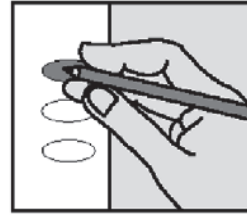
Your ballot will not be counted if the return envelope is not signed. Every signature is checked against the registration signature on file and the signature must match for the ballot to be counted.

3. Return your ballot.

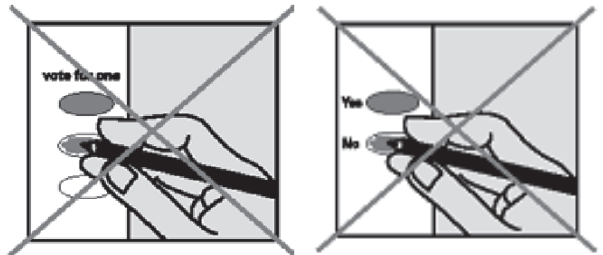
- **By mail:** Attach first-class postage to the signed and sealed return identification envelope. Mail it as soon as possible to arrive at the Multnomah County Elections Division no later than 8:00 p.m. on Election Day. A postmark does not count!
- **In person at an official drop site:** Deliver the signed and sealed return identification envelope to any official drop site no later than 8:00 p.m. on Election Day. Postage is NOT required if delivered to an official ballot drop box location.

check your ballot!

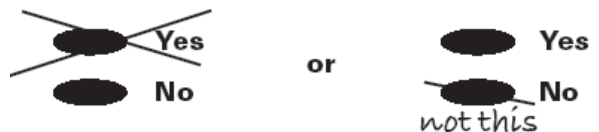
Make sure you have completely filled in the oval next to your choices.



If you vote for more candidates than allowed or if you vote **both Yes and No** on a measure, it is called an overvote. Your vote **will not count** for that candidate or measure.



If you make a mistake or change your mind while marking your ballot, you may request a replacement ballot from the Elections office or you may make your changes on the ballot. It is critical that **you make your choice obvious** because election workers will inspect each ballot to make sure voter intent is understood and the ballot is counted correctly. Two examples of how to make your intent clear are below.



You don't have to vote in all contests. Your other votes will still count. You cannot change your vote once you've mailed or dropped off your ballot.

Contact Multnomah County Elections Division to request assistance if:

- you make a mistake
- your ballot is damaged
- your ballot is lost

or for any other reason.

Contact: Multnomah County Elections Division
phone: 503-988-3720
website: www.mcelections.org
email: elections@multco.us
Oregon Relay Service: 1-800-735-2900

Returning your ballot

Voting begins as soon as you receive your ballot in the mail. Consider returning it early to be counted in election night results and to have time to resolve any issues.



Through the Mail - You can vote and return your ballot through the U.S. Postal Service as soon as you receive it. One 1st class or Forever Stamp is all you need to mail the ballot back in Multnomah County. Your ballot must be received by 8:00 p.m. Election Day.



Official Ballot Drop Boxes - You can return your ballot to an Official Drop Box by 8:00 p.m. Election Day. Locations in Multnomah County are listed below. Ballots may be delivered to any Official Ballot Drop Box in Oregon until 8:00 p.m. Election Day.

24-Hour Official Ballot Drop Boxes

A-BOY SUPPLY - 7365 SW Barbur Blvd.

GOODWILL STORE - 3134 North Lombard St.

MCDONALD'S RESTAURANT - West side of NE 40th Ave. between NE Tillamook St. and NE Hancock St. (Near the Hollywood Library.)

REGAL CINEMAS MOVIE THEATER / M & M CAR WASH – SE Division St & SE 165th Ave, Portland – drop box located in Regal Cinemas parking lot behind M & M Car Wash.

MULTNOMAH COUNTY ELECTIONS OFFICE - 1040 SE Morrison St. Portland - Two Drop Box locations. Box located on the East Side of **SE 11th Ave.** between SE Morrison St. and SE Belmont St. Another box located on the North Side of **SE Belmont St.** between SE 10th Ave. and SE 11th Ave.

GRESHAM BRANCH LIBRARY - 385 NW Miller Ave.
MIDLAND BRANCH LIBRARY - 805 SE 122nd Ave.
PIONEER COURTHOUSE SQUARE - 700 block of SW Broadway (next to Starbucks and across from Nordstrom)

Library Official Ballot Drop Sites & Hours



Voted ballots may be delivered to any Multnomah County library from the day ballots are mailed until 8:00 PM on Election Day, during library hours. An official ballot drop box is securely located inside each library; library hours are listed below. For 24-hour access, please use the 24-hour drop sites listed above or the ballot/book return at Central Library.

Central Library - 801 SW 10th Ave.

- Monday - 10 am - 8 pm
- Tuesday - noon - 8 pm
- Wednesday - noon - 8 pm
- Thursday - 10 am - 6 pm
- Friday - noon - 6 pm
- Saturday - 10 am - 6 pm
- Sunday - 10 am - 5 pm

Belmont Library - 1038 S.E. César E. Chávez Blvd.

Gresham Library - 385 NW Miller Ave., Gresham

Hillsdale Library - 1525 SW Sunset Blvd.

Hollywood Library - 4040 NE Tillamook St

Midland Library - 805 SE 122nd

- Monday - 10 am - 6 pm
- Tuesday - 10 am - 8 pm
- Wednesday - noon - 8 pm
- Thursday - noon - 8pm
- Friday - 10 am - 6 pm
- Saturday - 10 am - 6 pm
- Sunday - 10 am - 5 pm

Albina Library - 3605 NE 15th Ave.

Capitol Hill Library - 10723 SW Capitol Highway

Fairview-Columbia Library - 1520 NE Village St., Fairview

Gregory Heights Library - 7921 NE Sandy Blvd.

Holgate Library - 7905 SE Holgate Blvd.

Kenton Library - 8226 N. Denver Ave.

North Portland Library - 512 N Killingsworth St.

Northwest Library - 2300 NW Thurman St.

Rockwood Library - 17917 SE Stark St.

St. Johns Library - 7510 N Charleston Ave.

Sellwood-Moreland Library - 7860 SE 13th Ave.

Troutdale Library - 2451 SW Cherry Park Rd., Troutdale

Woodstock Library - 6008 SE 49th Ave.

- Monday noon - 8 pm
- Tuesday noon - 8 pm
- Wednesday 10 am - 6 pm
- Thursday 10 am - 6 pm
- Friday 10 am - 6 pm
- Saturday 10 am - 6 pm
- Sunday noon - 5 pm