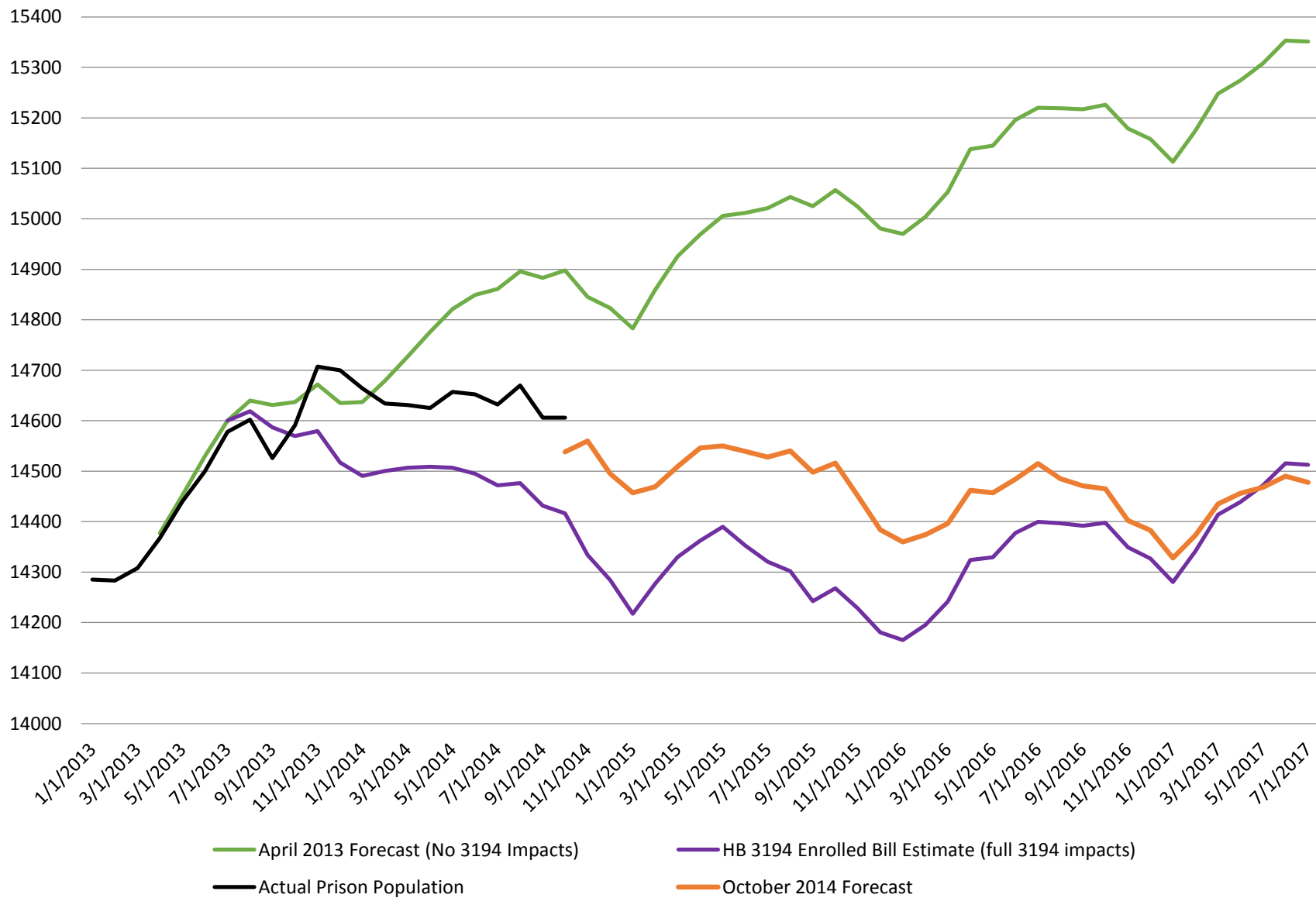


Multnomah County LPSCC

Statewide Prison Use

Craig Prins
Oregon Criminal Justice Commission
October 7, 2014

Prison Population and Forecasts



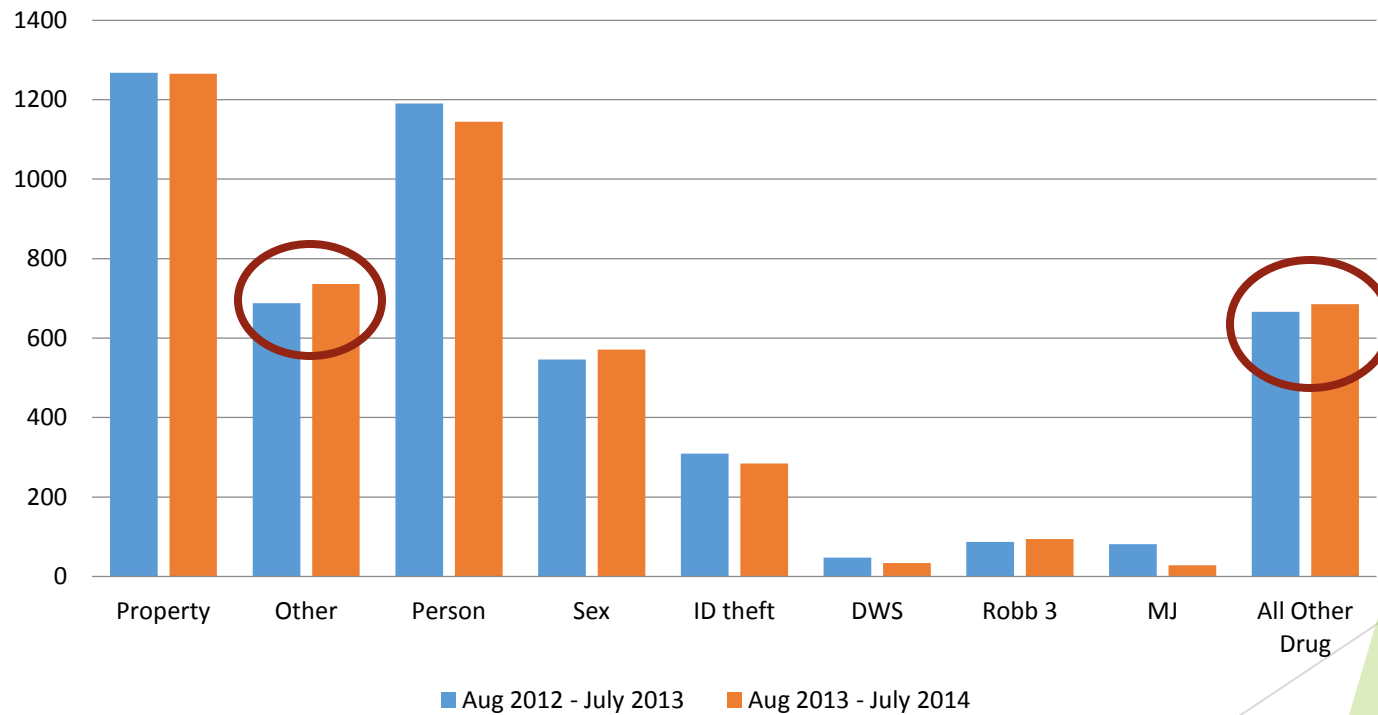
The background features abstract, overlapping green geometric shapes, primarily triangles and polygons, in various shades of green, creating a modern, layered effect on the right side of the slide.

Statewide Prison Use Aug 2012- July 2013 compared to Aug 2013-July 2014

Historical Prison Intake Comparison

- ▶ Statewide is down by 41 intakes in total

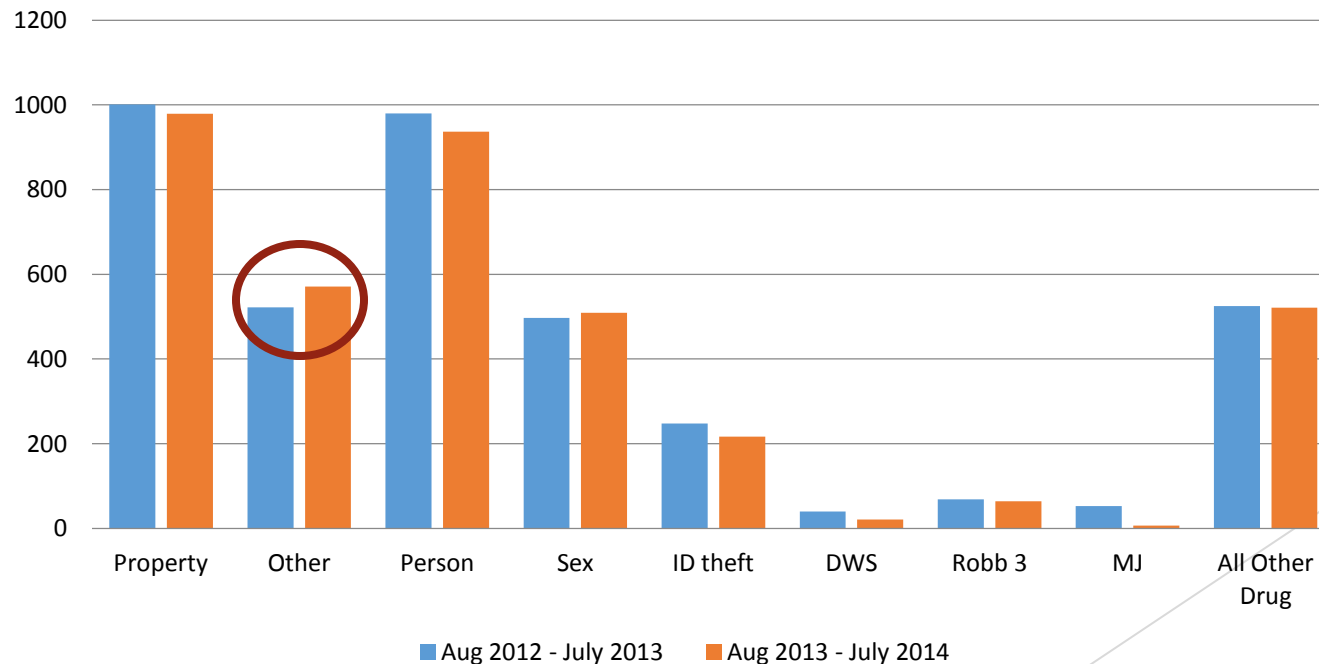
Total Prison Intakes



Prison Intakes First Sentences

- ▶ Those sent to prison as the first sentence from a conviction
- ▶ Statewide is down by 109 intakes
- ▶ First sentences make up about 80% of total intakes

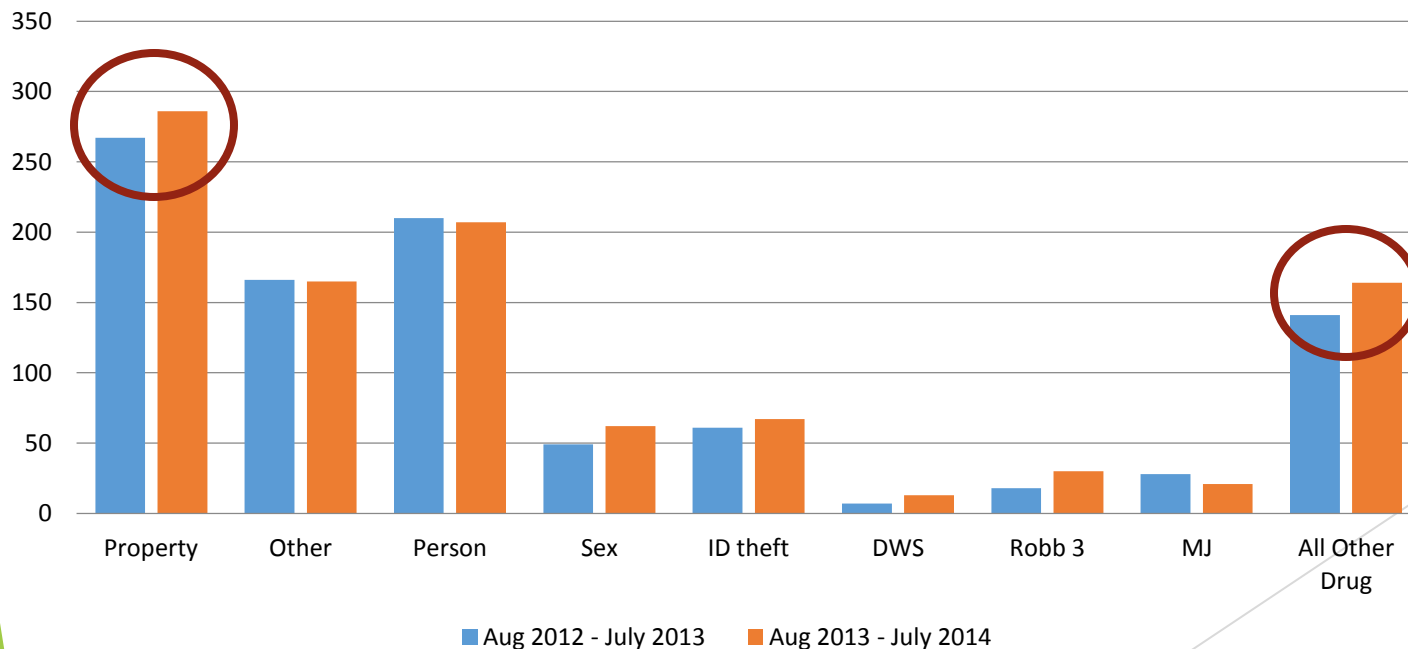
Prison Intakes for First Sentences



Prison Intakes Probation Revocations

- ▶ Those sent to prison on a probation revocation, without a new prison eligible crime
- ▶ Statewide is up by 68 intakes
- ▶ Second sentences make up about 20% of total intakes

Prison Intakes for Probation Revocations



Prison Intakes

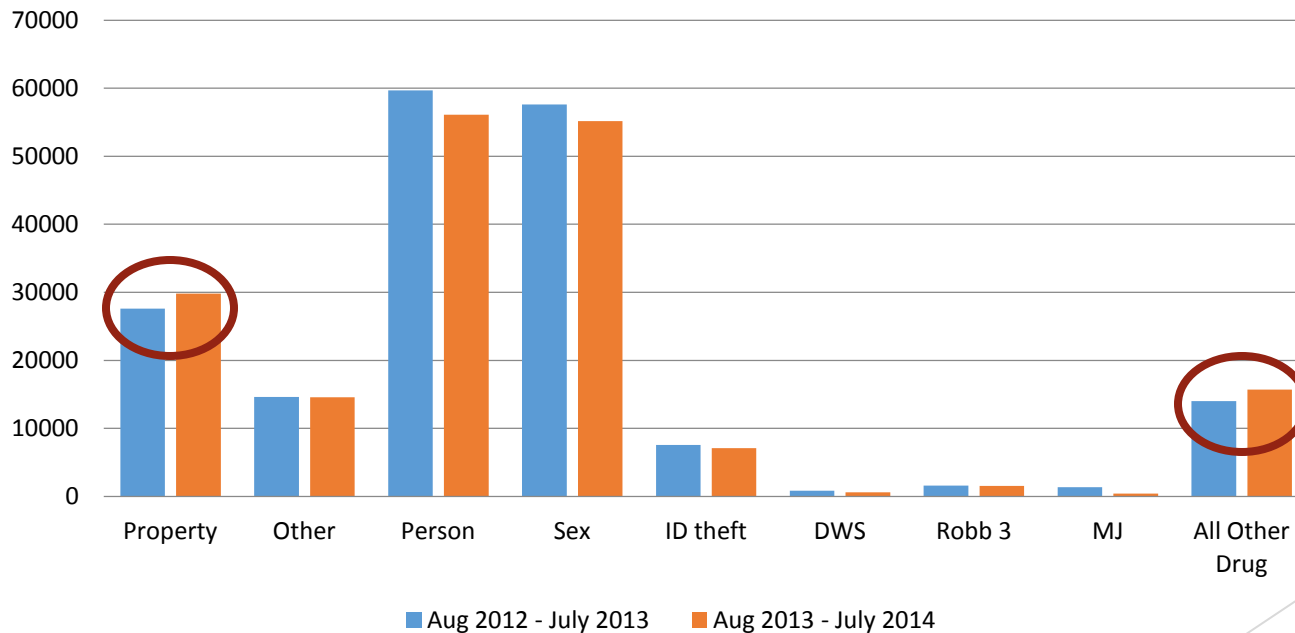
- ▶ Statewide is down by 41 intakes in total
- ▶ Three largest increase crimes in the same time period

Top 3 Crimes with Largest Increase in Intakes	
Crime	Difference in Intakes
Deliver Heroin	55
Assault IV	29
Deliver Meth	26

Prison Months (Intakes and LOS)

- ▶ Statewide total prison months are down 2.0%

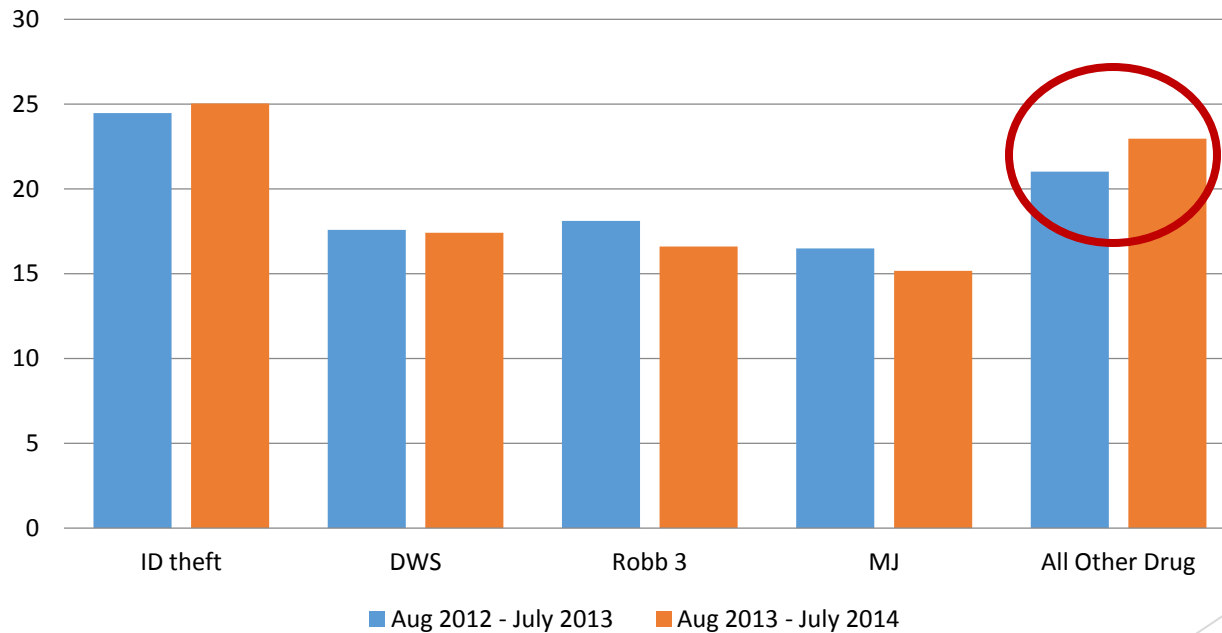
Total Prison Months



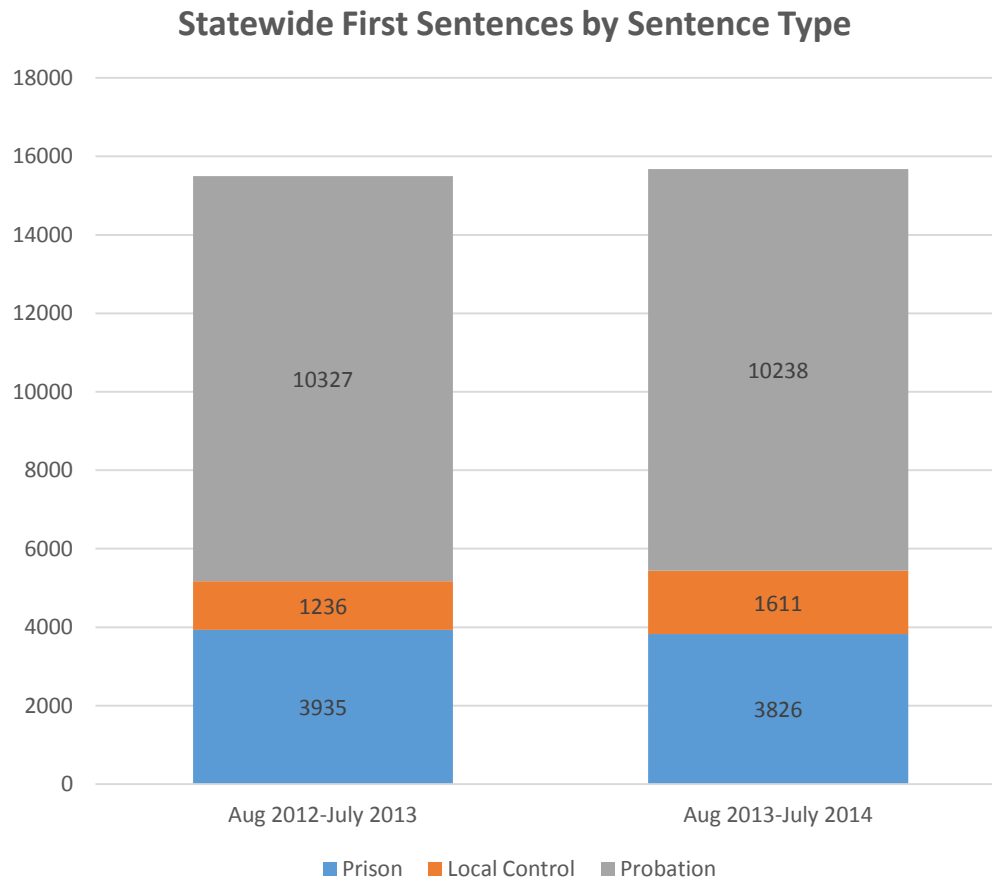
HB 3194 Average LOS

- ▶ Average LOS for ID theft is up by half a month
- ▶ Average LOS for All Other Drug is up 1.9 months

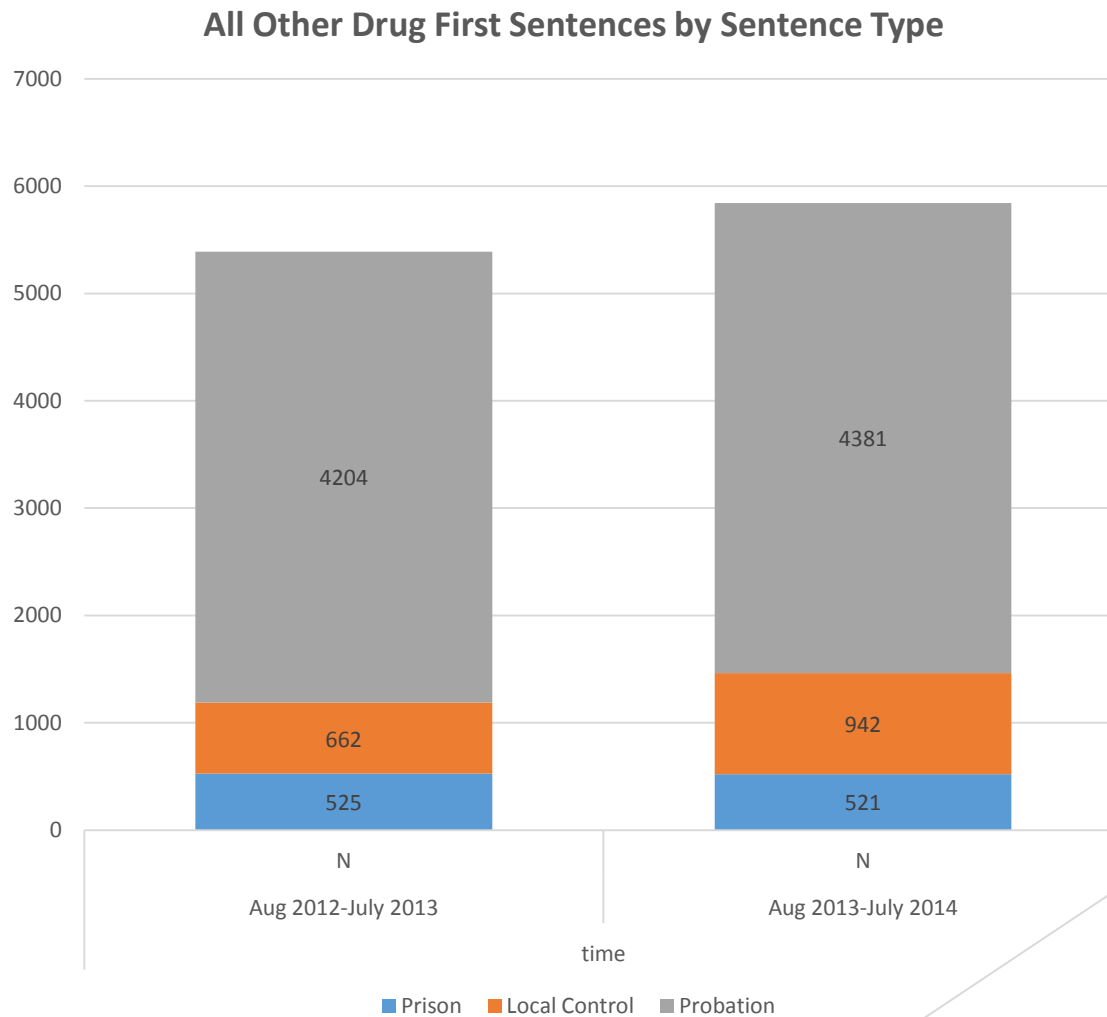
3194 Average Length of Stay



Sentence Types

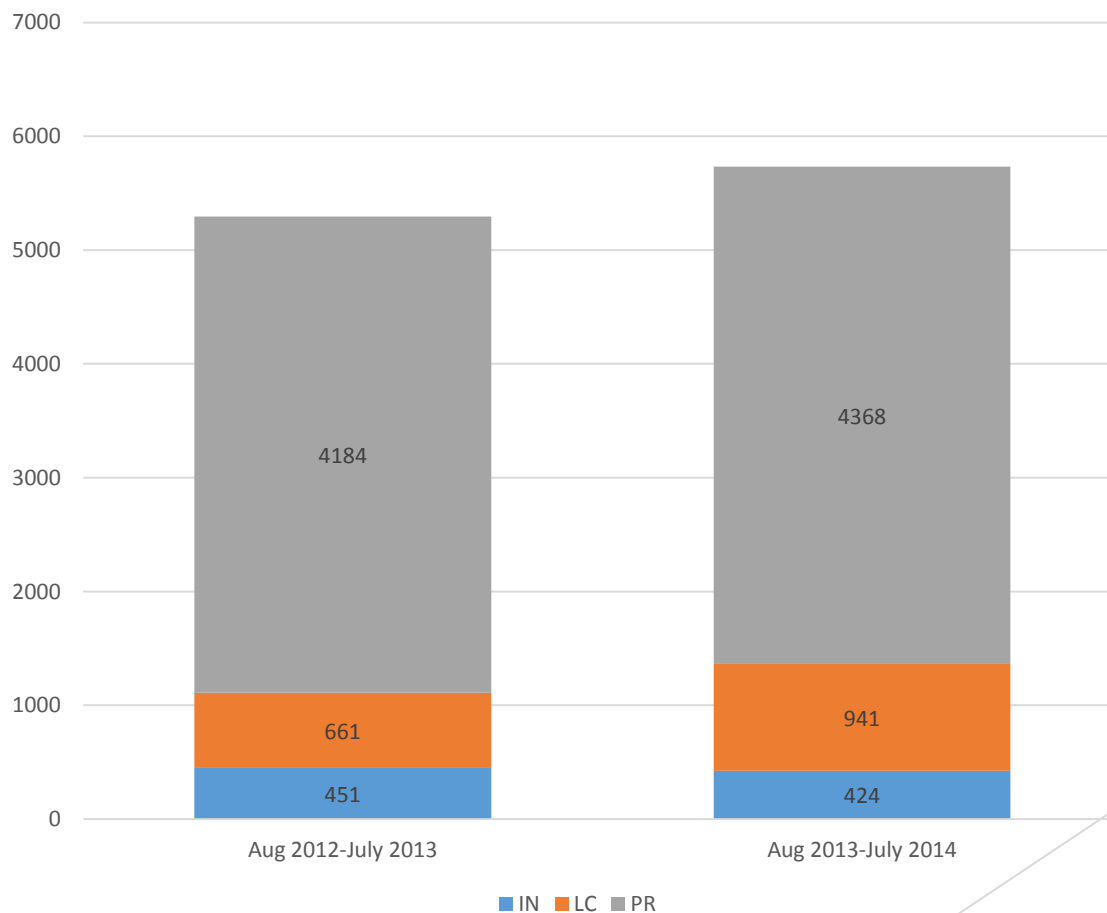


All Other Drug Sentence Types

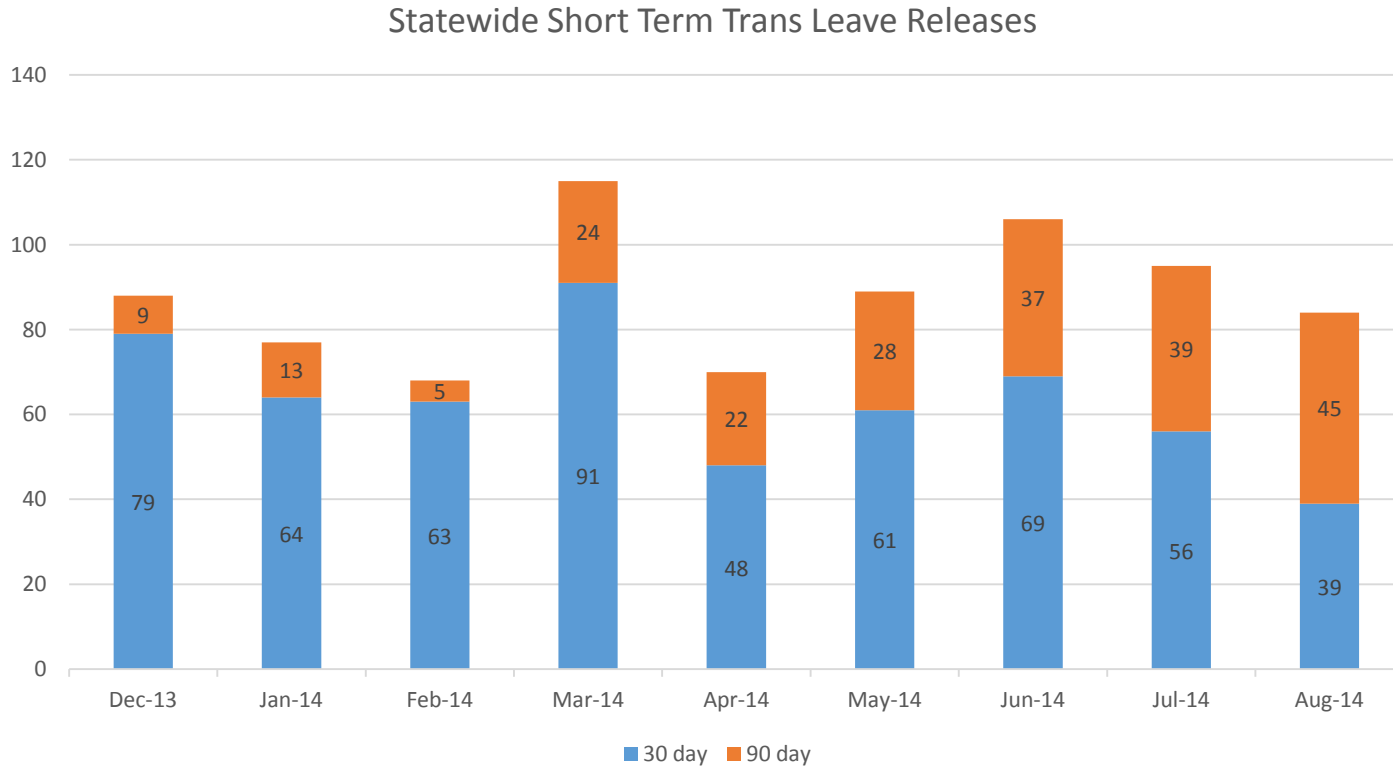


All Other Drug Sentence Types

Statewide All Other Drug First Sentences by Sentence Type
Crime Seriousness 8 or Less



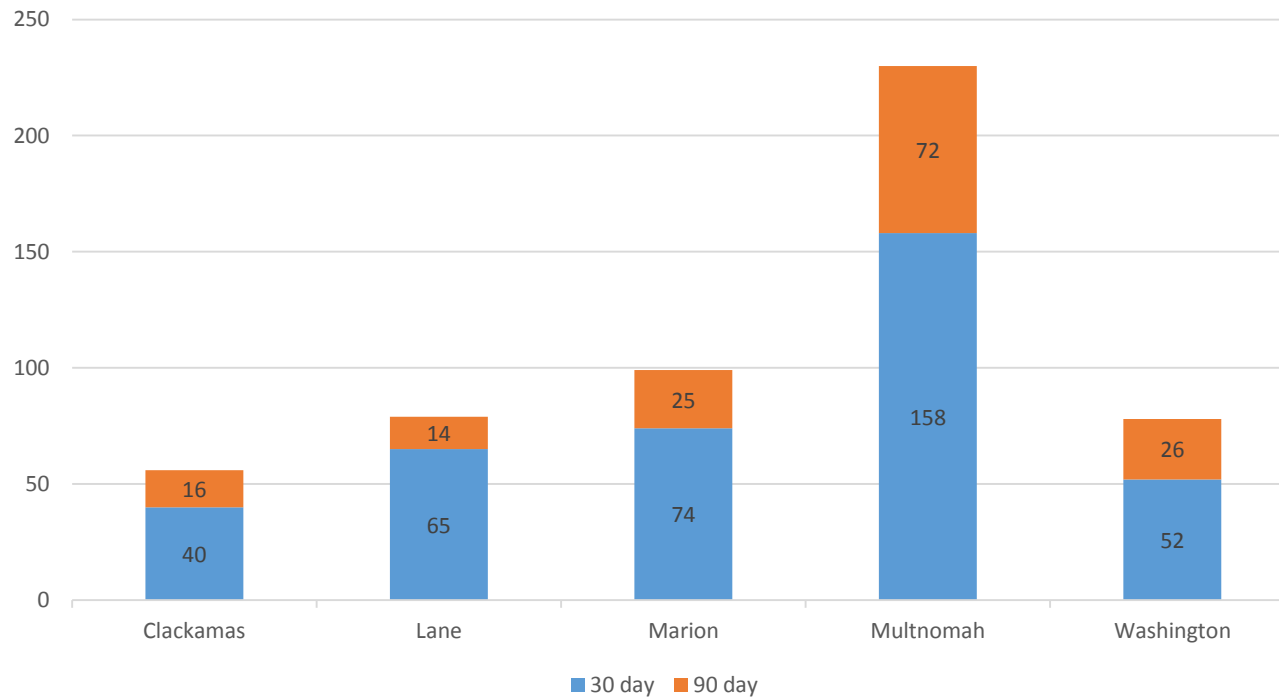
Short Term Trans Leave



* August data may not include the full month

Short Term Trans Leave

Metro Region Short Term Trans Leave Releases
Dec 2013 to August 2014



* August data may not include the full month

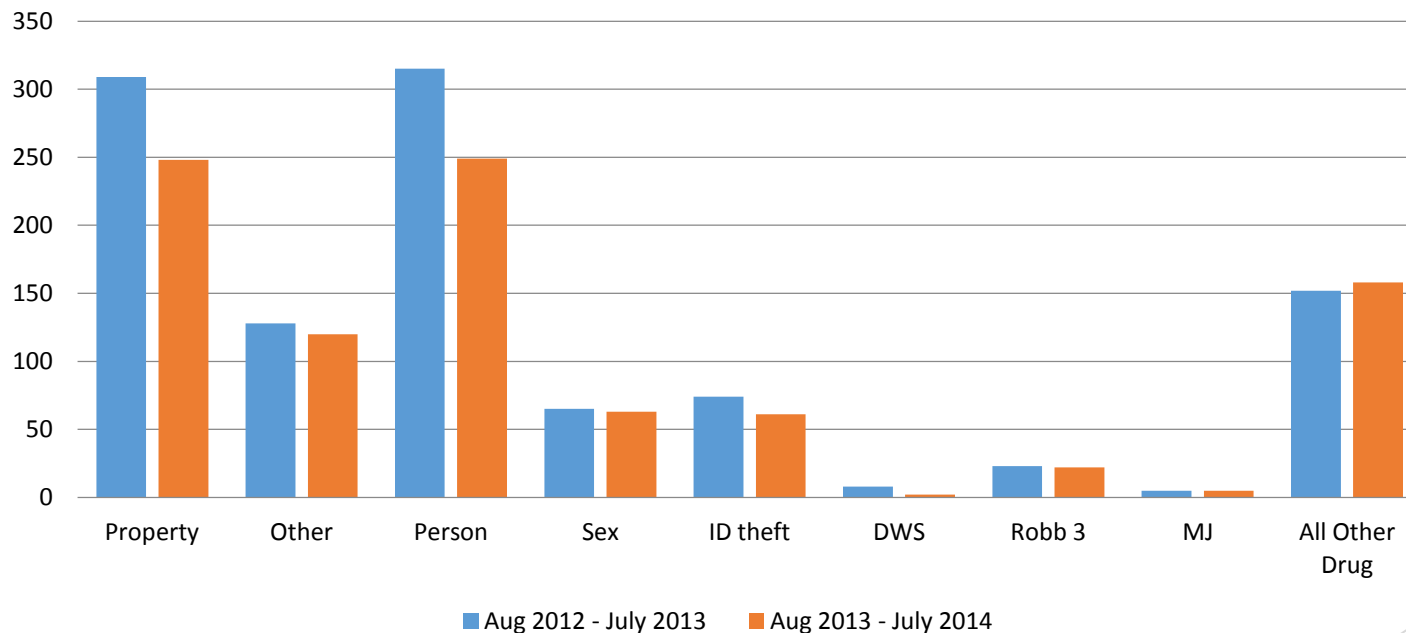
The background features abstract, overlapping green geometric shapes, primarily triangles and polygons, in various shades of green, creating a modern, layered effect on the right side of the slide.

Multnomah County Prison Use Aug 2012- July 2013 compared to Aug 2013-July 2014

Historical Prison Intake Comparison

- Multnomah County is down by 151 intakes in total

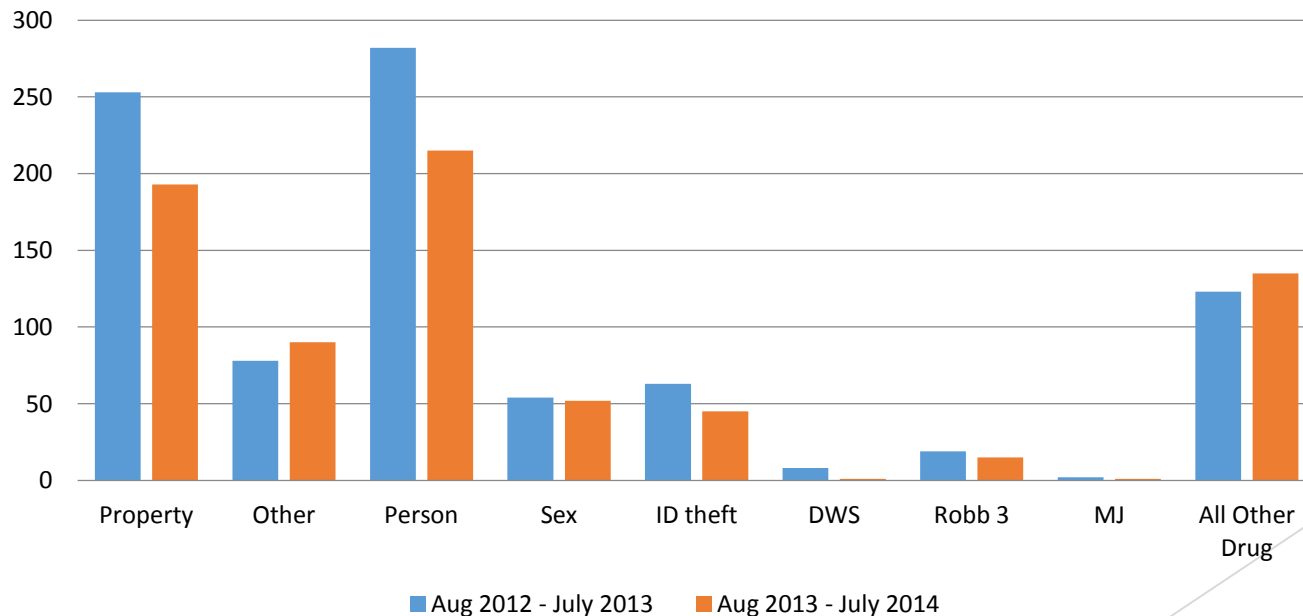
Multnomah County Total Prison Intakes



Prison Intakes First Sentences

- ▶ Those sent to prison as the first sentence from a conviction
- ▶ Multnomah County is down by 135 intakes
- ▶ First sentences make up about 80% of total intakes

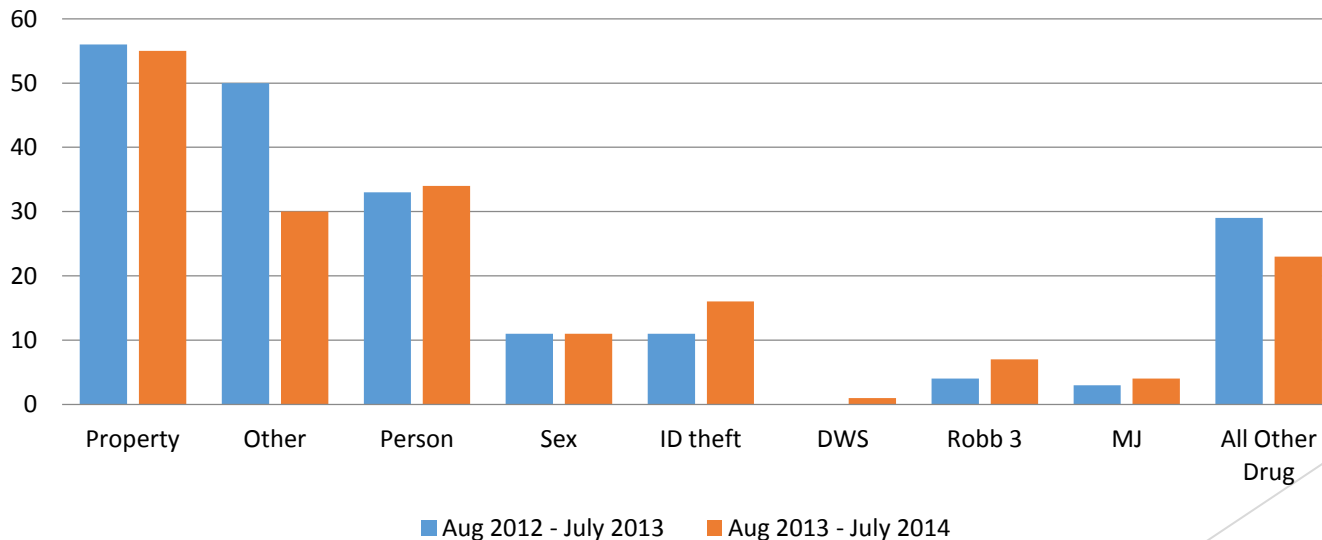
Multnomah County Prison Intakes for First Sentences



Prison Intakes Probation Revocations

- ▶ Those sent to prison on a probation revocation, without a new prison eligible crime
- ▶ Multnomah County is down by 16 intakes
- ▶ Second sentences make up about 20% of total intakes

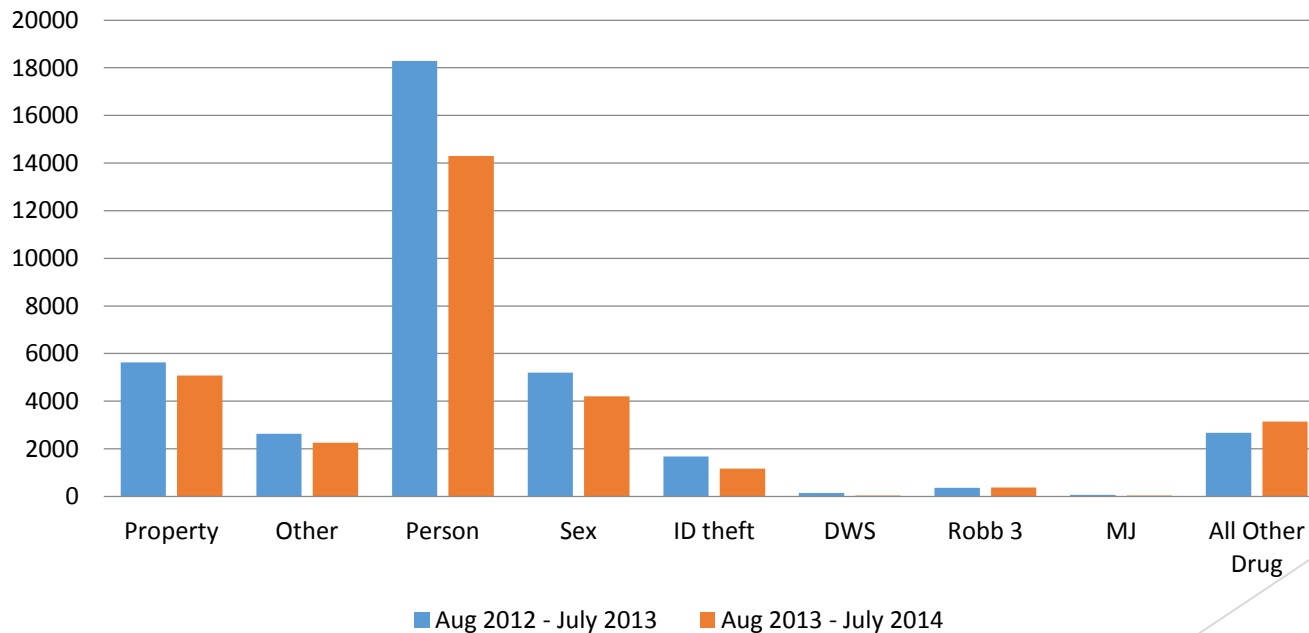
Multnomah County Prison Intakes for Probation Revocations



Prison Months (Intakes and LOS)

- ▶ Multnomah County total prison months are down 16.5%

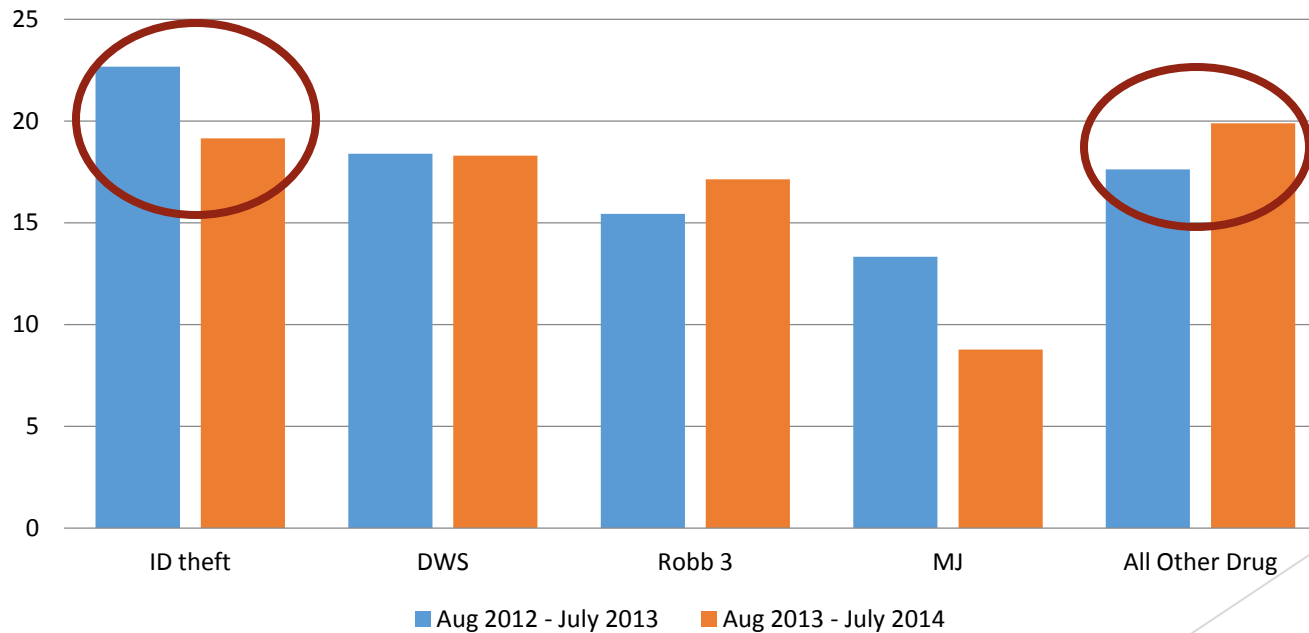
Multnomah County Total Prison Months



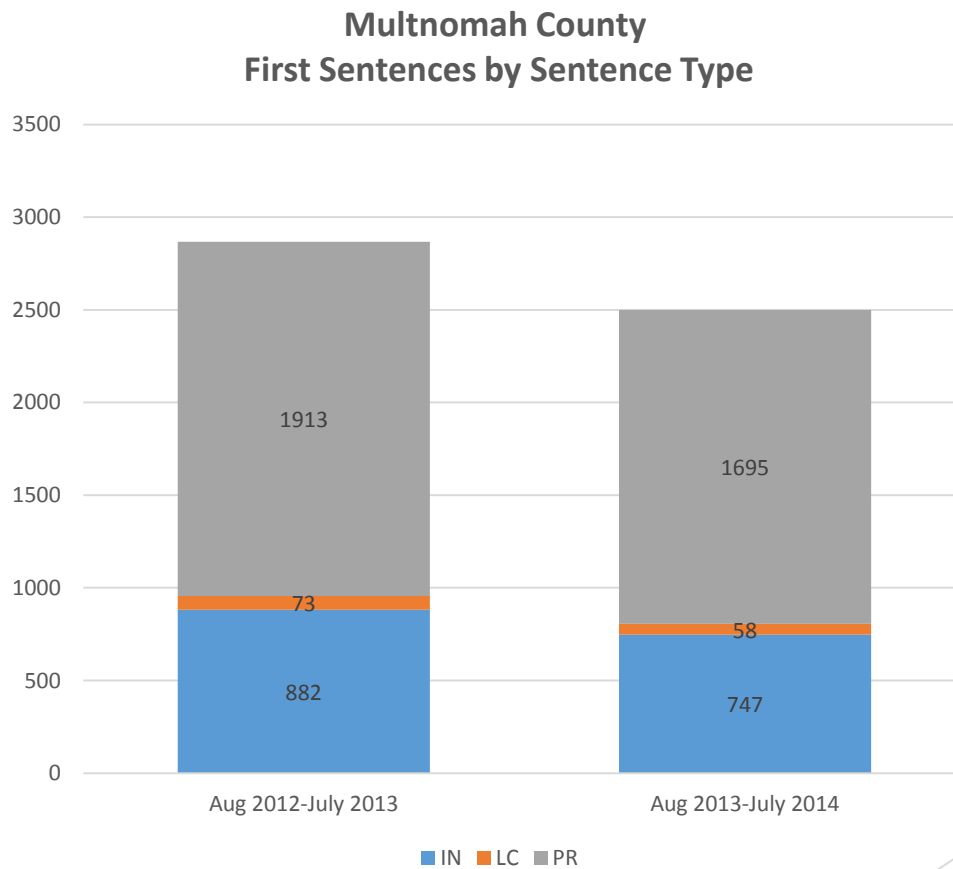
HB 3194 Average LOS

- ▶ Average LOS for ID theft down 3.5 months
- ▶ Average LOS for All Other Drug is up 2.3 months

Multnomah County 3194 Average Length of Stay

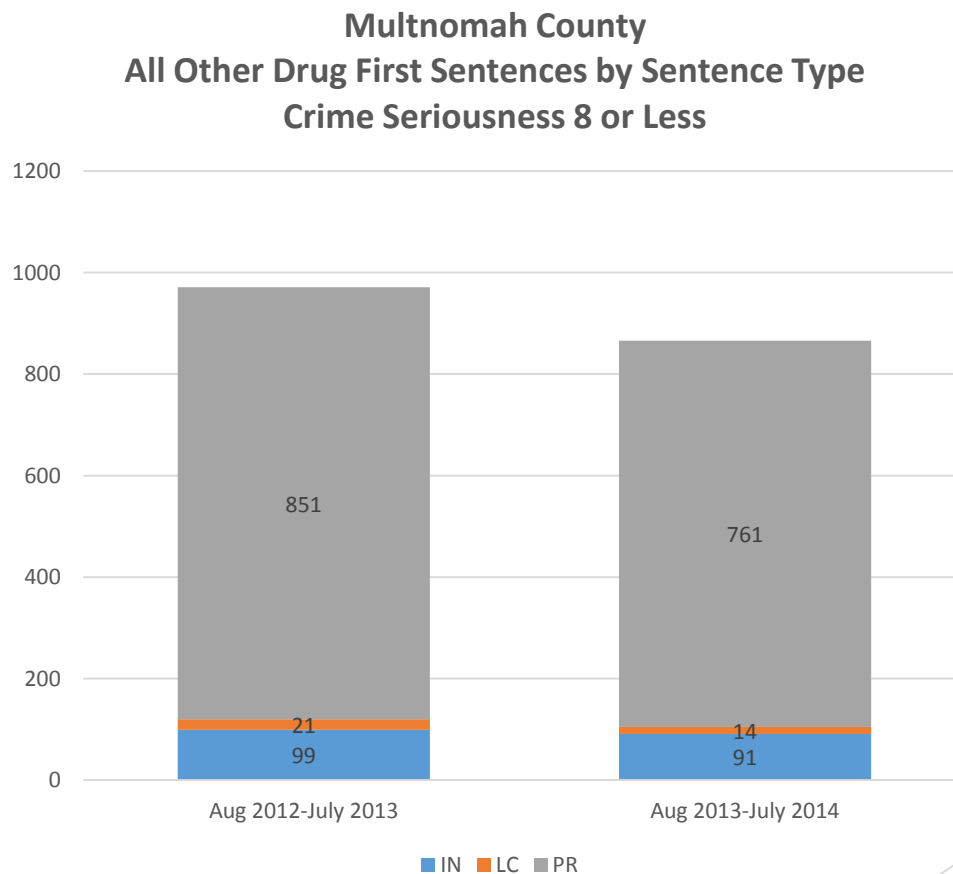


Multnomah County Sentence Types

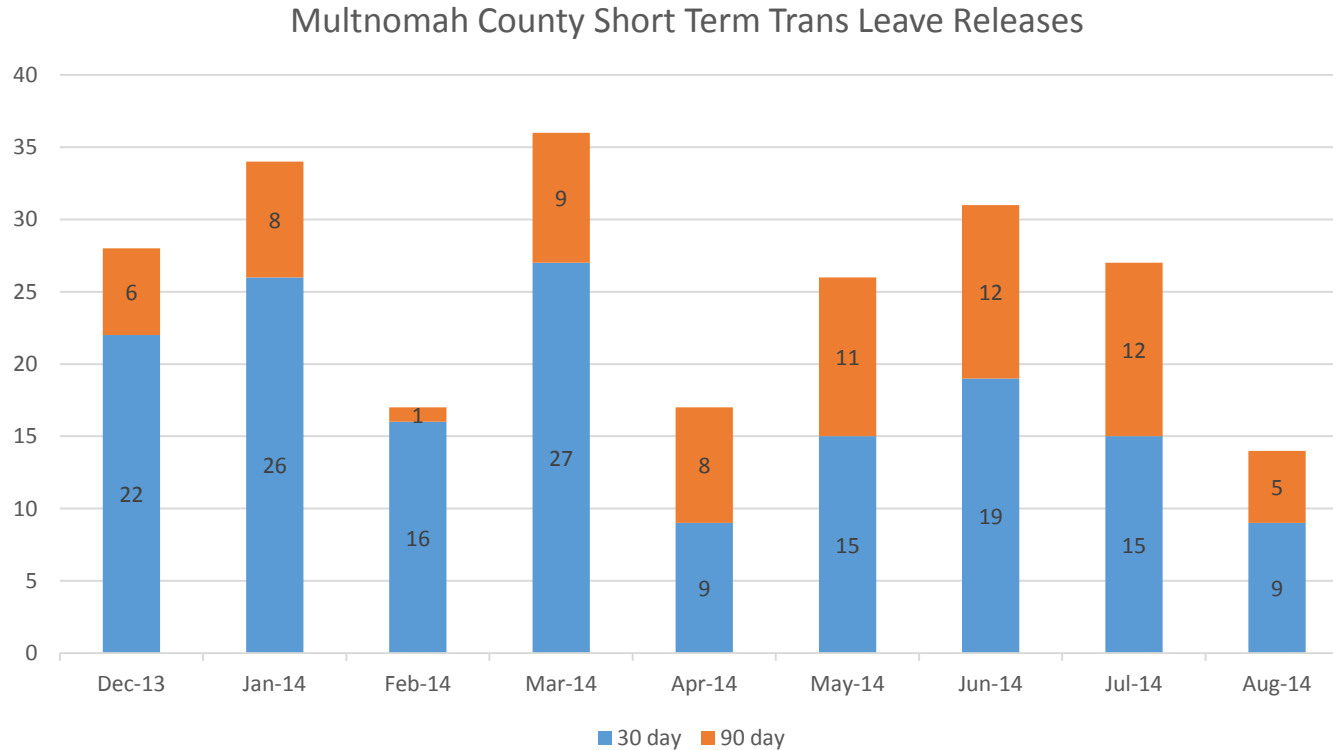


Multnomah County

All Other Drug Sentence Types



Short Term Trans Leave



* August data may not include the full month