



# Local Public Safety Coordinating Council of Multnomah County

## Public Safety Trends Summary

The Public Safety Trends document provides an executive level summary of operational data for many of the decision points and agencies in Multnomah County's public safety system. The statistics in the Report are compiled from the Decision Support System – Justice (DSSJ) data warehouse.

**August 2014**

Dear Reader,

Welcome to the Public Safety Trends Summary Report produced by Multnomah County's Local Public Safety Coordinating Council (LPSCC). The purpose of this report is to provide an executive level summary of operational data for many of the decision points in the County's Public Safety System for the Council's Executive Committee, partner agency staff, and members of the public.

The statistics detailed in this report are sourced from the County's Decision Support System – Justice data warehouse (DSSJ). The data contained in DSSJ is sourced from the host agency systems and is regularly audited for accuracy. Additionally, the data presented in this report is regularly reviewed by the owner agency analysts for consistency and clarity.

The Report provides both long-term trend data and short-term descriptive statistics. The long-term trends section provides a description of how certain types of events, case types, and charge levels have changed over time. The short-term trends section provides a more detailed description of the data presented in the long-term trend section. Measures of reported Incidents, Arrest, Disposition, and Sentencing are reported at the case unit level. Measures for Booking and Custody are reported at the person level.

The Public Safety Trends Report is produced on a regular basis and serves as a starting point for broader investigations of trends in local public safety. Frequently, the Report will contain a special analysis section providing a systems perspective of specific areas in the local public safety system.

Lauren Brown  
LPSCC Analyst

## Items of Note and Updates

Reported Part 1 crime during January 1, 2014 – August 31, 2014 in Multnomah County has increased when compared to the same time period in 2013. This increase is driven by increases in reported Part 1 property crime, while reported Part 1 violent crime has remained stable.

Average daily bookings related to probation violations increased in August 2014 when compared to the prior month (July 2014) and August of the prior year (2013).

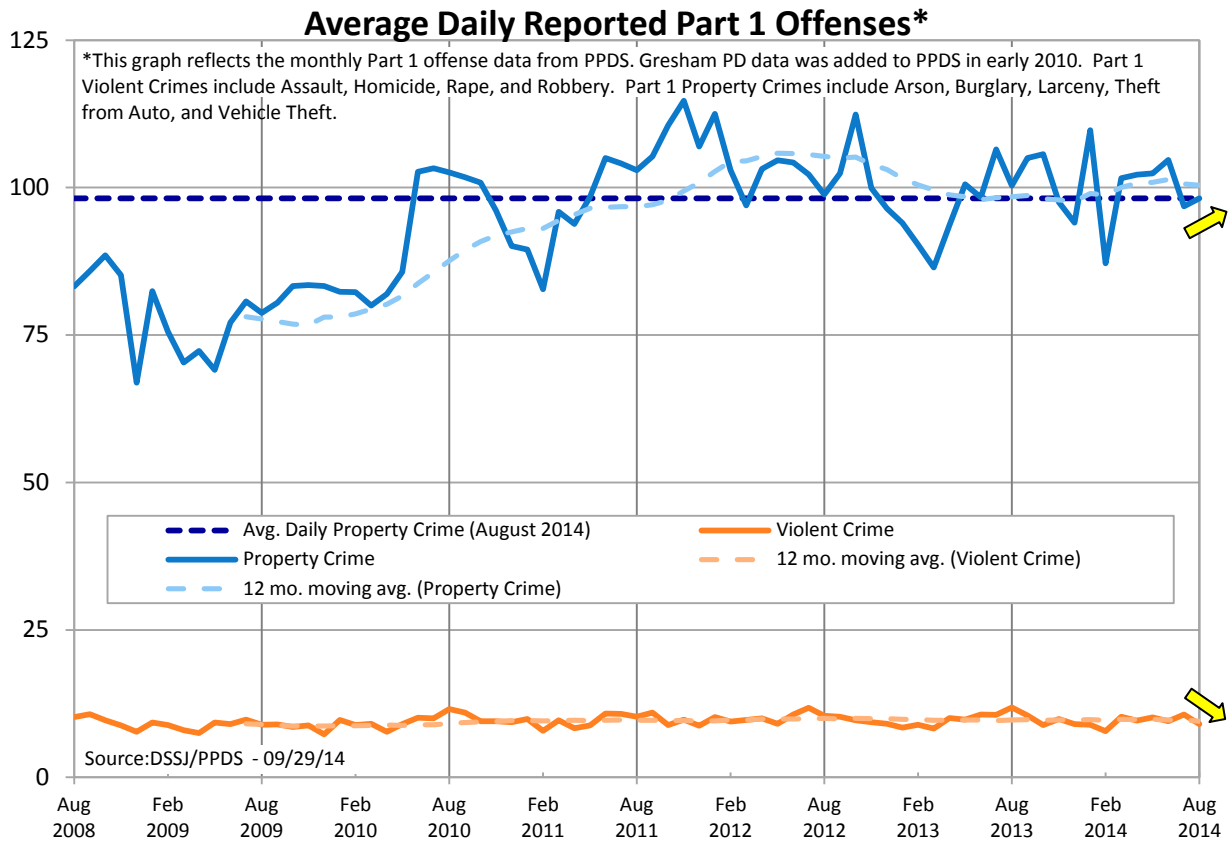
Over the past few months, a slight increasing trend has been seen in felony cases reviewed and issued by prosecution. Cases with misdemeanor primary charges have decreases slightly during the same time period.

The process of integrating data from the Multnomah County Circuit Court's new Odyssey (eCourt) system into DSSJ is ongoing. A few regularly published charts created using Court data are not included in this report due to the transition.



Contact Lauren Brown with questions or concerns [lauren.brown@multco.us](mailto:lauren.brown@multco.us)  
Current and past editions of this report are available at [www.lpscc.org](http://www.lpscc.org)





A decrease in average daily reported assaults during August 2014 led to a slight overall decrease in reported Part 1 violent crime in August when compared to July 2014 and August 2013. There was one reported homicide in August 2014. Year to date, the average daily reported offenses are up in 2014 when compared to 2013. This increase is driven by increases in reported Part 1 property crime, specifically larcenies – theft from auto.

Average Daily Reported Part 1 Offense by Type	August 2014	July 2014	August 2013	YTD 2014	YTD 2013
Part 1 Violent Crime	↓9.0	10.6	11.9	9.5	9.8
Homicide	0.0	0.1	0.0	0.1	0.1
Rape	0.8	0.7	1.0	0.8	0.8
Robbery	2.7	2.9	3.6	2.8	3.1
Assault	↓5.5	6.9	7.3	5.9	5.9
Part 1 Property Crime	↑98.2	96.8	100.4	↑100.5	96.3
Burglary	13.0	13.2	12.2	13.4	13.2
<i>Residential</i>	7.9	6.8	6.9	7.4	7.9
<i>Other</i>	5.1	6.5	5.3	6.0	5.3
Larceny	74.7	73.3	77.6	↑75.9	71.8
<i>Shoplifting</i>	13.9	12.5	14.1	14.4	13.8
<i>Theft from Auto</i>	28.6	27.3	24.9	↑30.5	25.9
<i>Other</i>	32.3	33.5	38.6	31.1	32.1
Motor Vehicle Theft	10.2	9.6	9.7	10.8	10.7
Arson	0.3	0.7	0.8	0.5	0.6
<b>Total Reported Part 1 Crime</b>	<b>107.2</b>	<b>107.5</b>	<b>112.2</b>	<b>↑110.0</b>	<b>106.2</b>

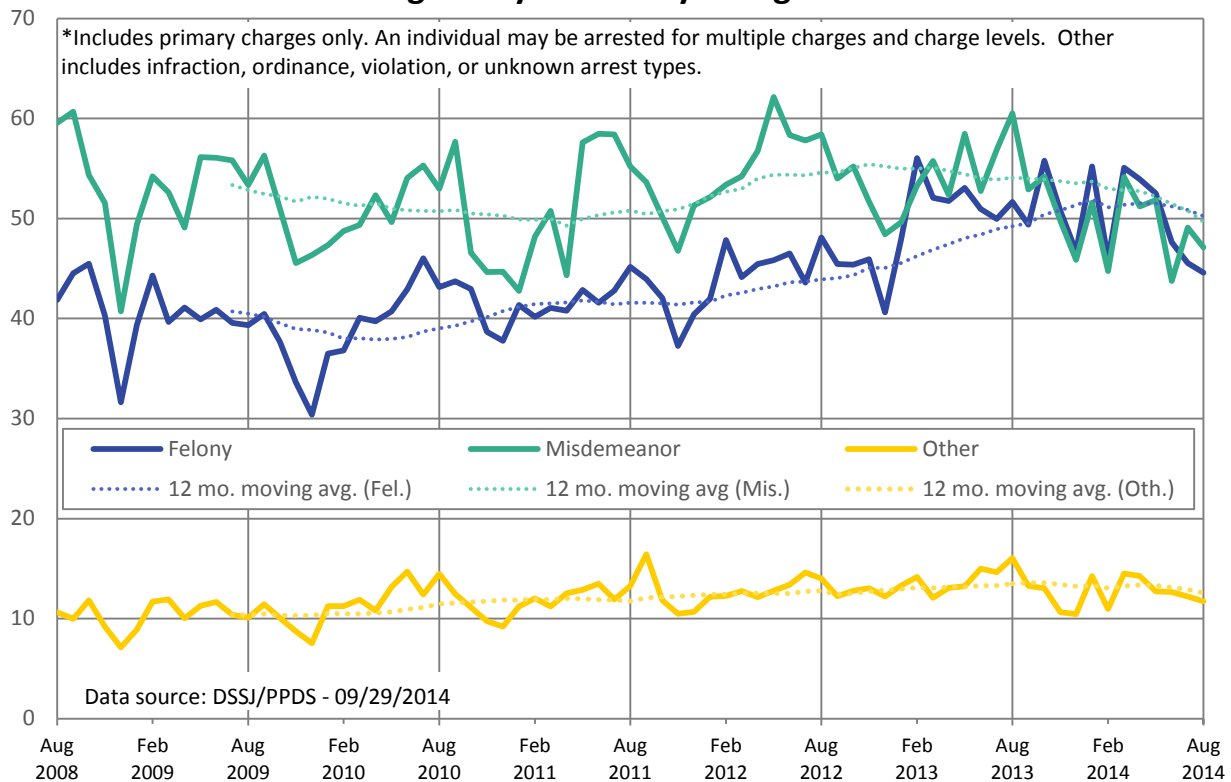
\*Reported incident data was pulled on 9/29/14. Due to records entry lag, the counts for the current month are lower than the true total. Year to date (YTD) data is as of August 31<sup>st</sup>.



Contact Lauren Brown with questions or concerns [lauren.brown@multco.us](mailto:lauren.brown@multco.us)  
 Current and past editions of this report are available at [www.lpscc.org](http://www.lpscc.org)



### Average Daily Arrests by Charge Level\*



Total average daily arrests in August 2014 were considerably lower than August 2013. Year to date, the average daily arrests are down in 2014 when compared to 2013 by approximately eight arrests per day. The greatest decrease is seen in misdemeanor arrests, with an average of two fewer arrests per day for behavioral, local, and person charges.

Average Daily Arrests by Charge Level and Type	August 2014	July 2014	August 2013	YTD 2014	YTD 2013
<b>Felony</b>	44.6	45.5	51.6	50.1	51.6
Alcohol & Drugs	9.4	10.2	12.0	↓10.5	12.2
Behavioral	0.7	0.6	1.2	0.9	1.1
Other Charge	0.3	0.2	0.2	0.2	0.2
Fugitive Hold (Warrants)	28.8	26.8	29.9	31.3	29.7
Person (includes DUII)	1.1	2.2	2.1	1.5	1.8
Property	4.2	5.5	6.1	5.8	6.7
Vehicle	0.0	0.0	0.1	0.0	0.1
<b>Misdemeanor</b>	47.1	49.1	60.5	↓49.3	55.0
Alcohol & Drugs	0.0	0.0	0.0	0.0	0.1
Behavioral	6.9	8.3	10.2	↓7.8	9.1
Local	9.1	9.4	12.3	↓7.5	9.7
Other Charge	1.3	1.5	1.9	1.5	1.3
Person (includes DUII)	12.5	12.4	14.8	↓12.9	14.7
Property	17.0	16.9	20.6	18.8	19.2
Vehicle	0.3	0.7	0.5	0.7	0.8
<b>Other Charge Levels</b>	11.7	12.2	16.1	12.9	13.9
<b>Total Arrests</b>	↓103.5	106.9	128.2	↓112.3	120.6

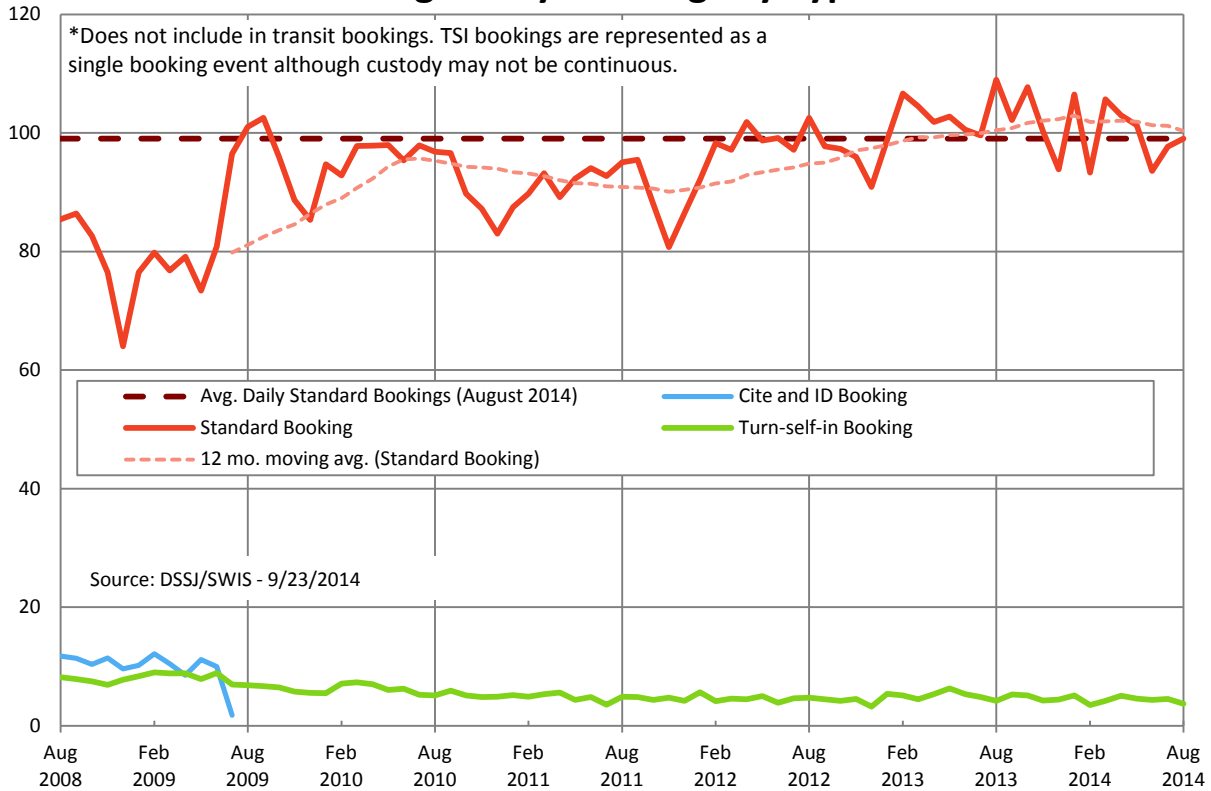
\*Arrest data was pulled on 9/29/14. Due to records entry lag, the counts for the current month are lower than the true total. Year to date (YTD) data is as of August 31<sup>st</sup>.



Contact Lauren Brown with questions or concerns [lauren.brown@multco.us](mailto:lauren.brown@multco.us)  
 Current and past editions of this report are available at [www.lpscc.org](http://www.lpscc.org)



### Average Daily Bookings by Type\*



Average daily standard bookings increased slightly in August 2014 when compared to July 2014. Increases were seen in misdemeanor bookings and bookings related to probation violations. When compared to August of 2013, there were on average ten fewer bookings per day during August 2014. Year to date, average daily bookings are down slightly in 2014 when compared 2013.

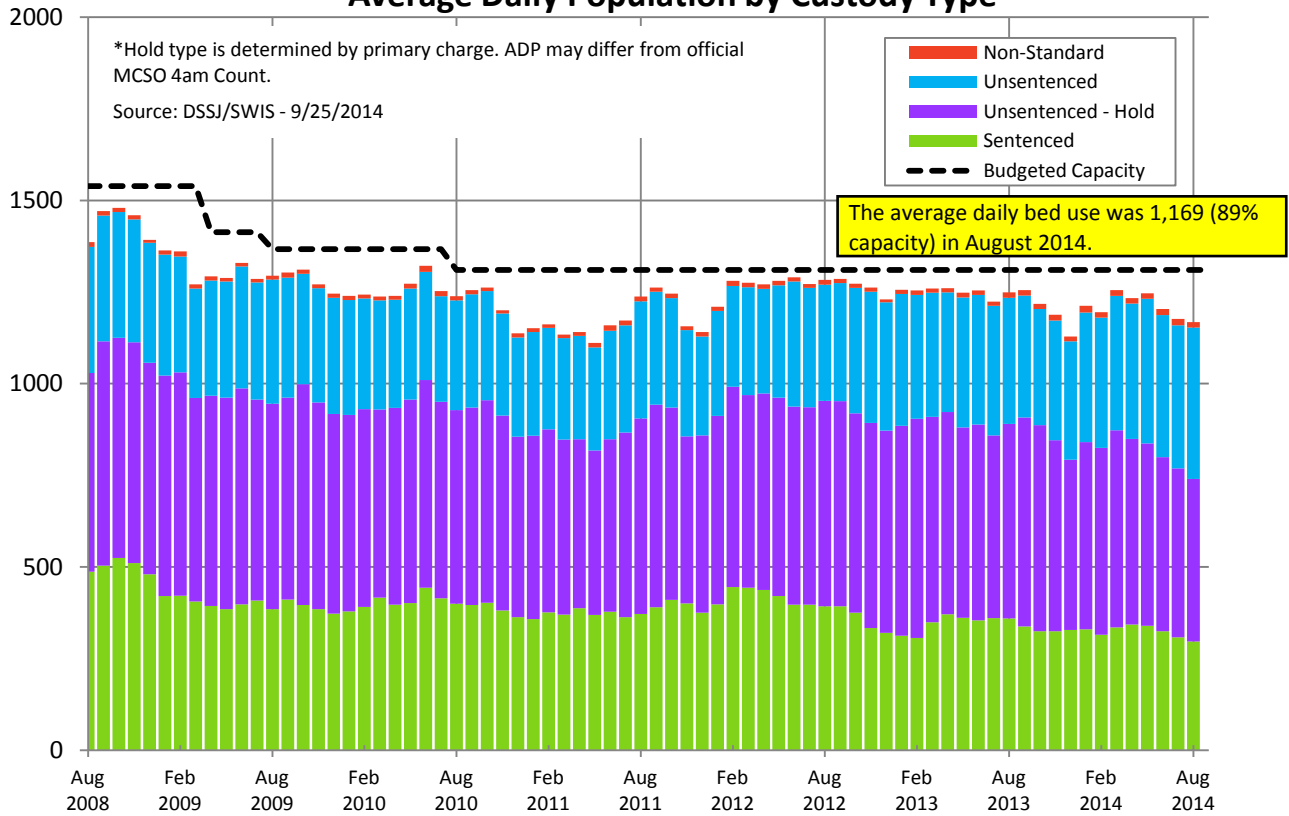
Average Daily Bookings by Charge Level and Type	August 2014	July 2014	August 2013	YTD 2014	YTD 2013
<b>Felony</b>	22.9	23.9	25.6	23.6	23.4
Alcohol & Drugs	9.4	9.2	10.5	9.7	9.7
Behavioral	1.7	1.3	2.0	1.5	1.5
Other Charge	0.9	1.2	1.2	1.0	0.9
Person (includes DUII)	↓3.5	4.6	4.5	4.0	4.1
Property	6.9	7.3	6.9	6.9	6.8
Vehicle	0.5	0.3	0.5	0.5	0.3
<b>Misdemeanor</b>	↑44.9	42.6	44.4	↓44.4	47.1
Alcohol & Drugs	0.6	0.5	0.4	0.5	0.6
Behavioral	9.4	10.2	11.5	9.7	10.8
Local	0.7	1.1	2.9	1.0	2.0
Other Charge	2.3	2.3	2.9	2.4	2.1
Person (includes DUII)	↑14.3	12.8	13.7	13.3	14.5
Property	15.7	13.5	16.8	15.4	14.9
Vehicle	1.8	2.2	1.8	2.1	2.1
Other Charge Levels	0.4	0.9	0.6	0.6	0.5
Probation Violations	↑13.3	11.5	11.6	12.2	11.3
Holds	17.5	18.8	21.1	19.4	20.6
<b>Total Standard Bookings</b>	<b>99.0</b>	<b>97.7</b>	<b>108.9</b>	<b>↓100.1</b>	<b>102.8</b>



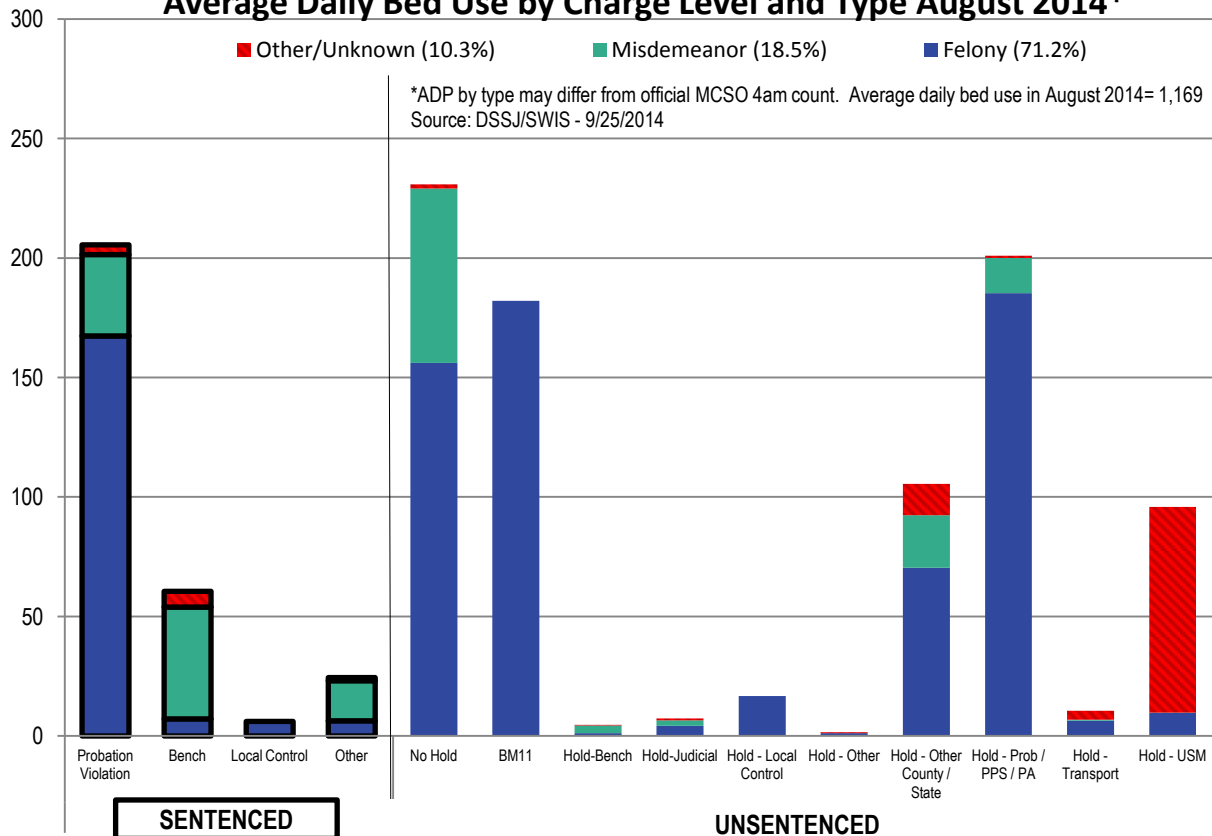
Contact Lauren Brown with questions or concerns [lauren.brown@multco.us](mailto:lauren.brown@multco.us)  
 Current and past editions of this report are available at [www.lpscc.org](http://www.lpscc.org)



### Average Daily Population by Custody Type\*



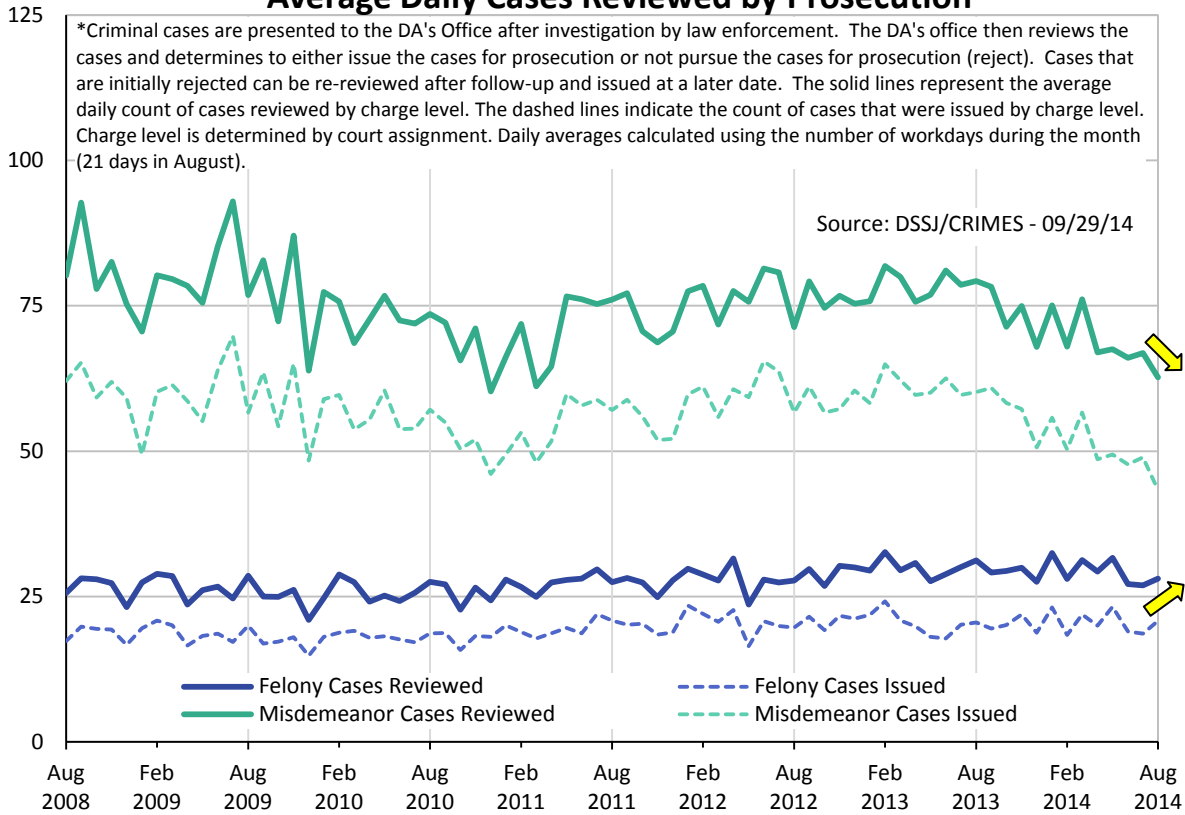
### Average Daily Bed Use by Charge Level and Type August 2014\*



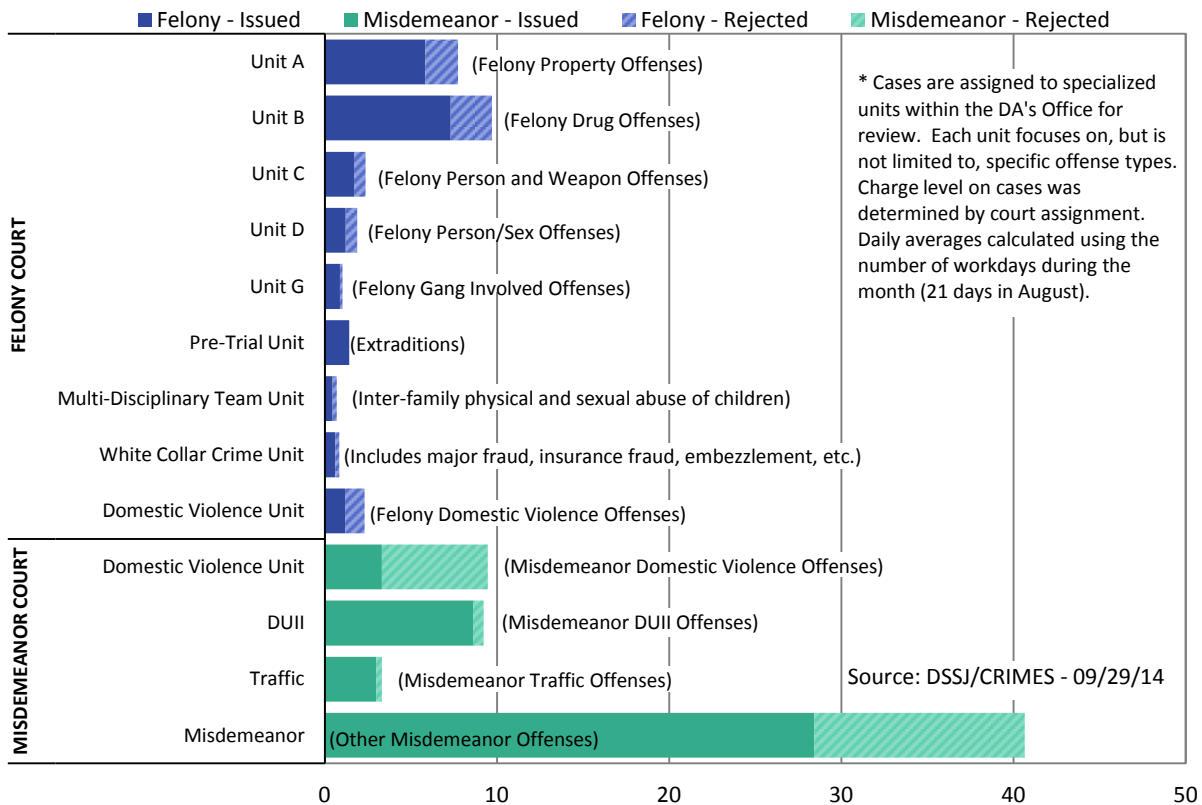
Contact Lauren Brown with questions or concerns [lauren.brown@multco.us](mailto:lauren.brown@multco.us)  
Current and past editions of this report are available at [www.lpscc.org](http://www.lpscc.org)



### Average Daily Cases Reviewed by Prosecution\*



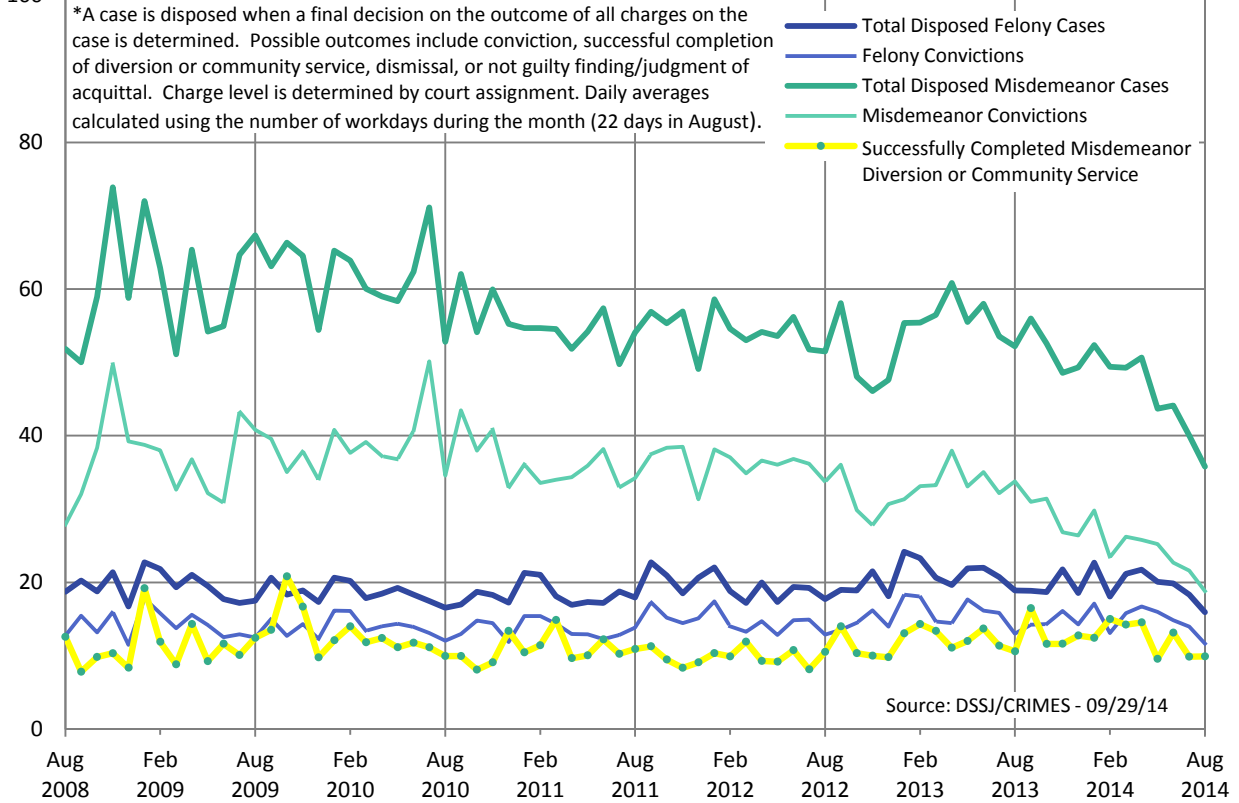
### Average Daily Case Review Outcome by DA Unit - August 2014\*



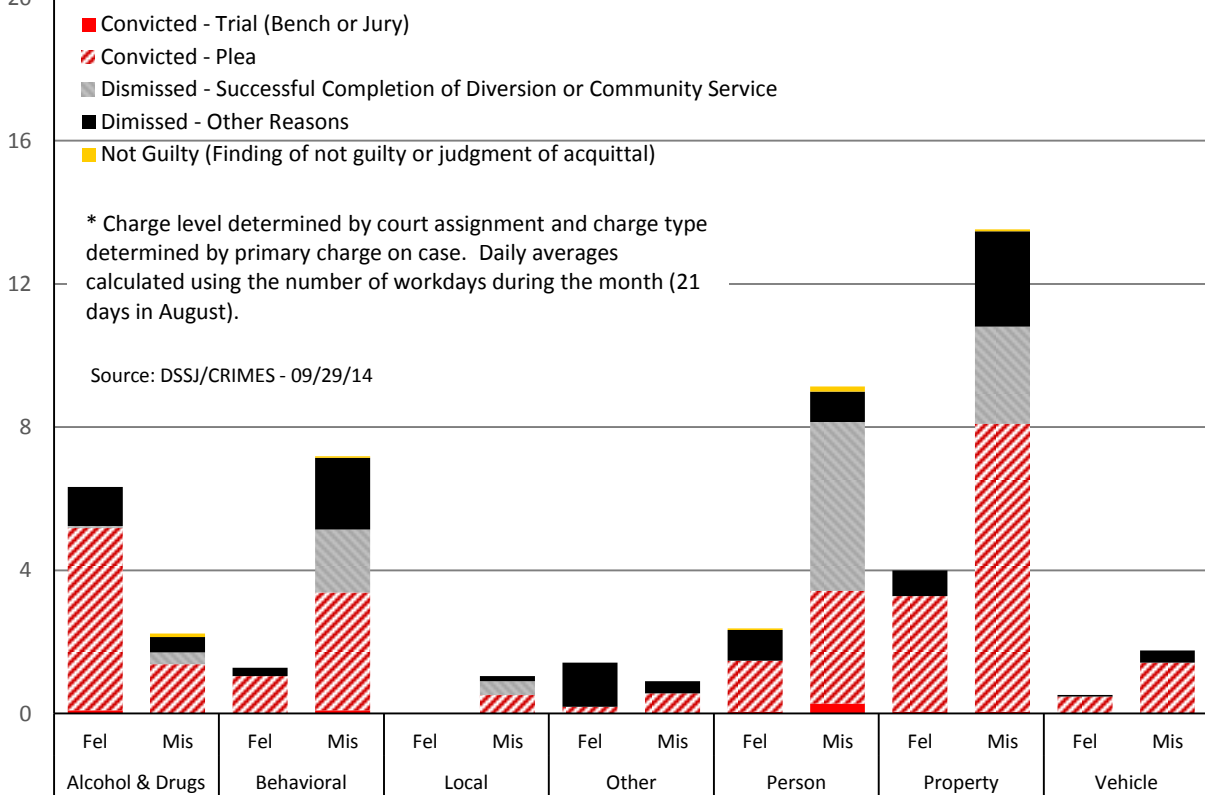
Contact Lauren Brown with questions or concerns [lauren.brown@multco.us](mailto:lauren.brown@multco.us)  
 Current and past editions of this report are available at [www.lpscc.org](http://www.lpscc.org)



### Average Daily Disposed Prosecution Cases by Charge Level\*



### Average Daily Prosecution Case Disposition by Charge Level and Type August 2014\*

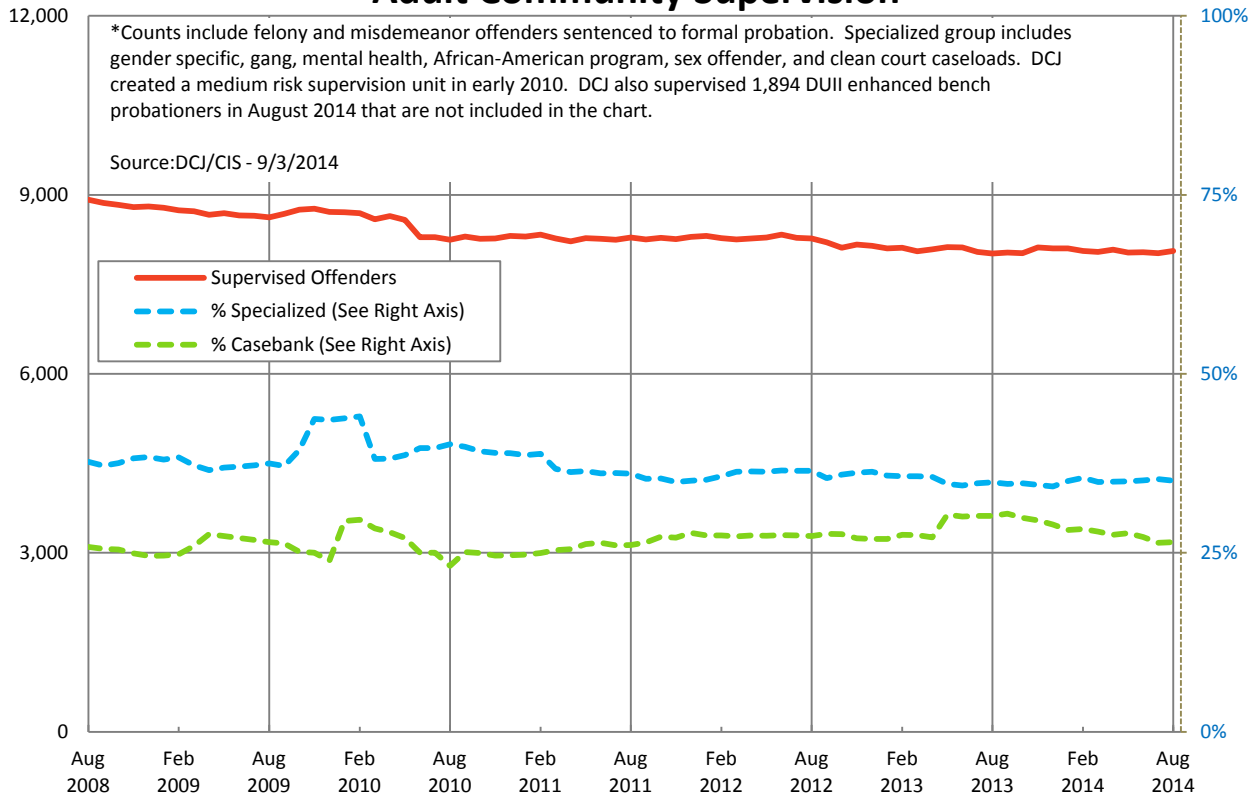


Contact Lauren Brown with questions or concerns [lauren.brown@multco.us](mailto:lauren.brown@multco.us)  
 Current and past editions of this report are available at [www.lpscc.org](http://www.lpscc.org)

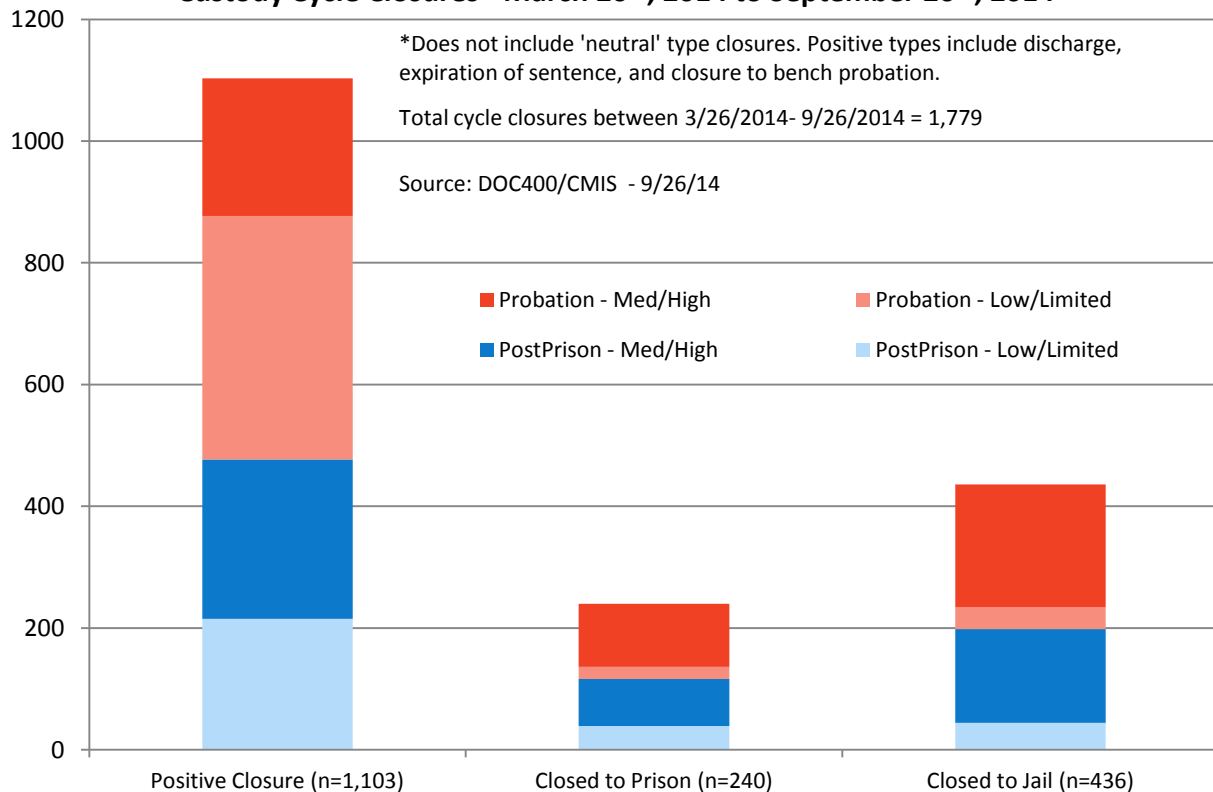




### Adult Community Supervision\*



### Custody Cycle Closures - March 26<sup>th</sup>, 2014 to September 26<sup>th</sup>, 2014\*



Contact Lauren Brown with questions or concerns [lauren.brown@multco.us](mailto:lauren.brown@multco.us)  
 Current and past editions of this report are available at [www.lpscc.org](http://www.lpscc.org)

