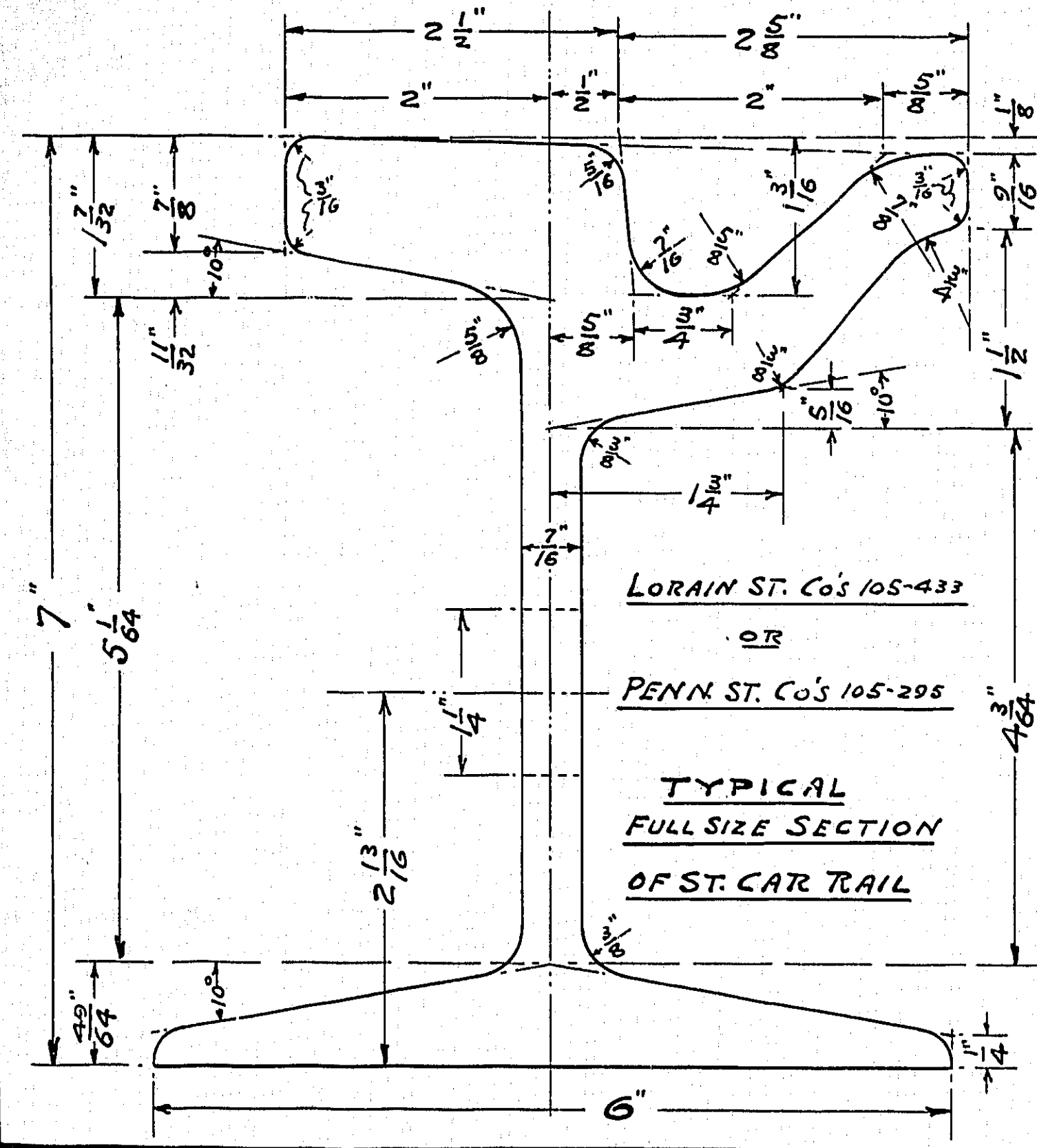
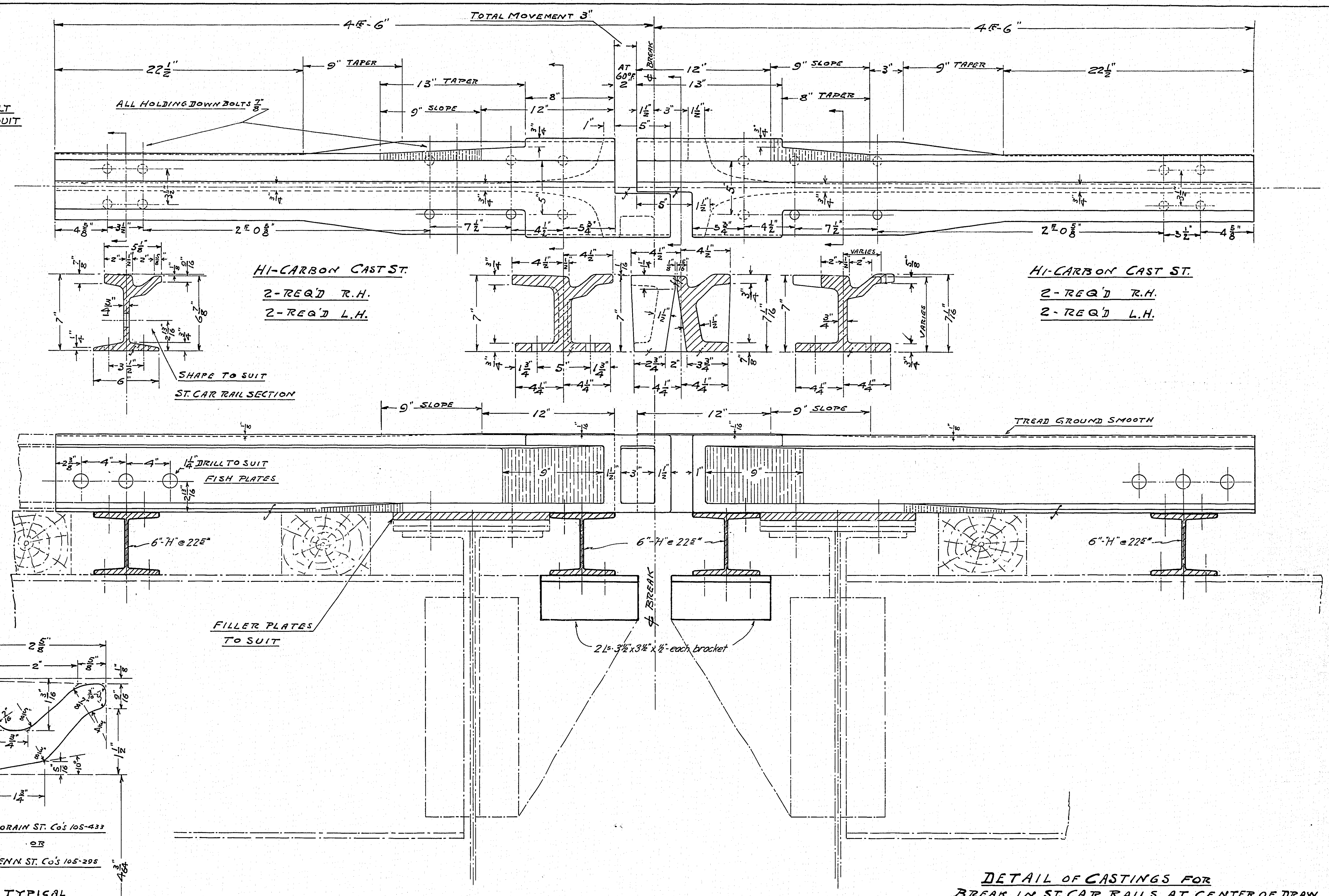
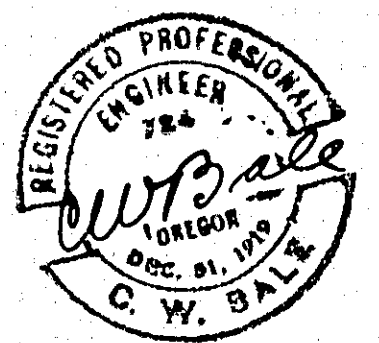


TURNED BOLTS  
 48-REQ'D-2 1/2" LONG  
 32-REQ'D-6 1/2" LONG  
 ALL BOLTS THREADED 1 1/8"  
 FURNISH 1-1/4" WASHER EACH BOLT  
 BOLTS FOR SPLICE PLATES TO SUIT

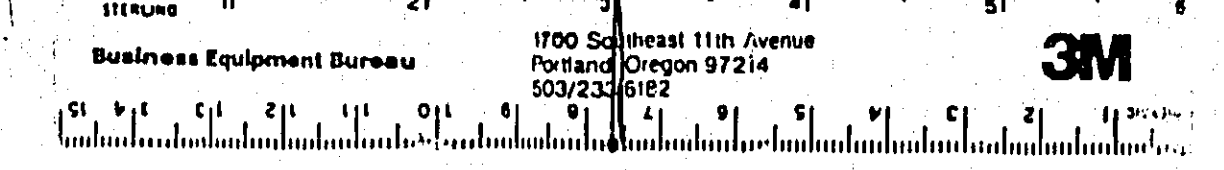


LORAIN ST. Co's 105-432  
 PENN. ST. Co's 105-295

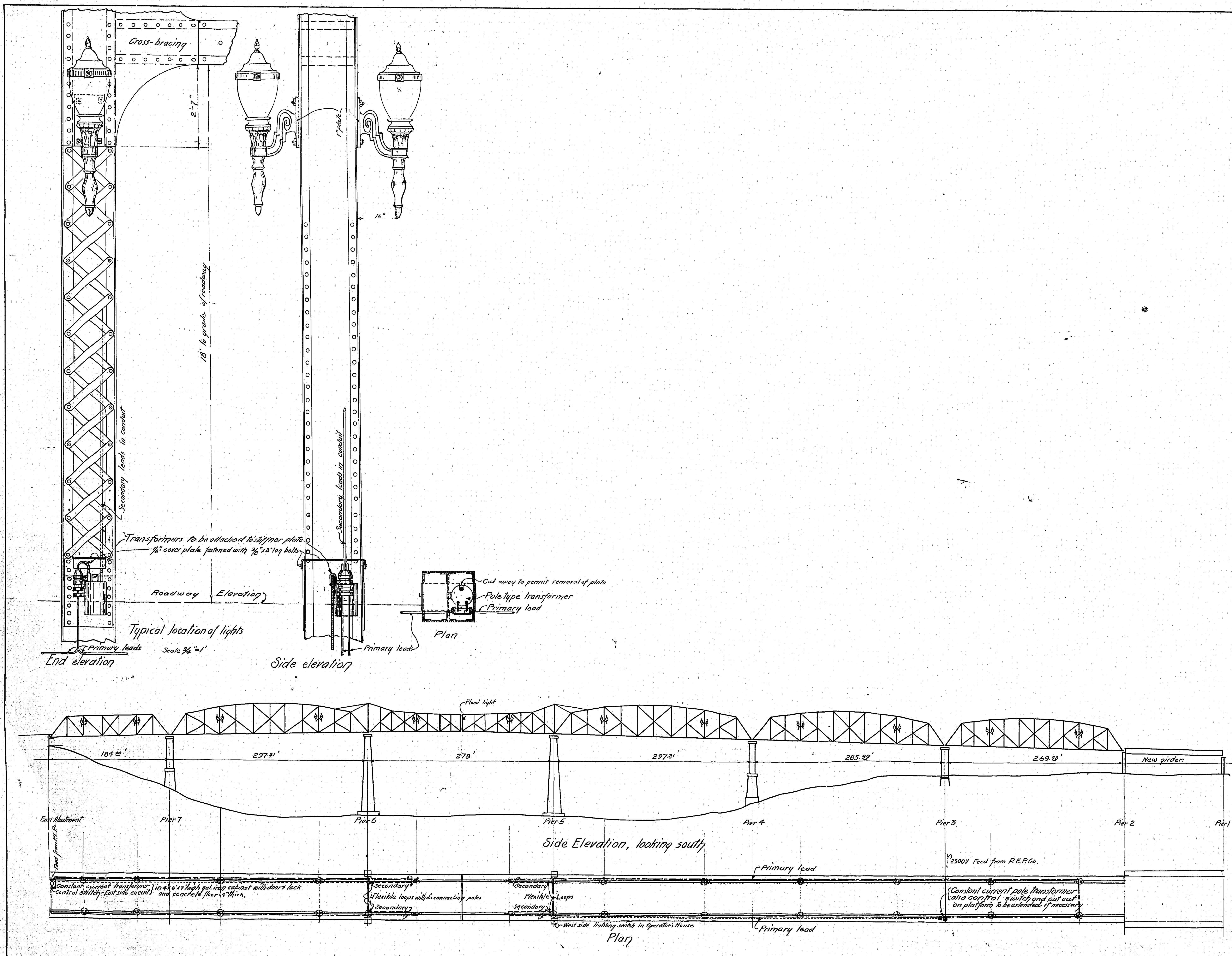


DETAIL OF CASTINGS FOR  
 BREAK IN ST. CAR RAILS AT CENTER OF DRAW  
**BROADWAY BRIDGE**  
 ELECTRIC STEEL FOUNDRY  
 PORTLAND OREGON  
 SCALE 3"=1 FT. OCT. 6, 1927  
 C.W. BALE  
 SHEET NO. 6-AA

NOTICE: IF THIS DOCUMENT IS LESS  
 LEGIBLE THAN THIS NOTICE IT IS  
 DUE TO THE QUALITY OF THE ORIGINAL.



2



**LEGEND**

- Transformers in post near sidewalk
- Primary N.E.B. lines
- - - Secondary leads in overhead conductors
- ..... Remote control switch leads

MULTNOMAH COUNTY - OREGON  
**BROADWAY BRIDGE.**  
 PORTLAND, OREGON.

**LIGHTING TRUSS SPANS**

MADE BY M&C  
 CHECKED BY GUSTAV LINDENTHAL  
 TRACED BY NEW YORK CONSULTING ENGINEER  
 CHECKED BY PORTLAND, ORE.  
 DRAWING NO. DATE - 9-24-1927  
 SHEETS SHEET NO. 7-B  
 PORTLAND OFFICE

SCALE 1/4" = 1'