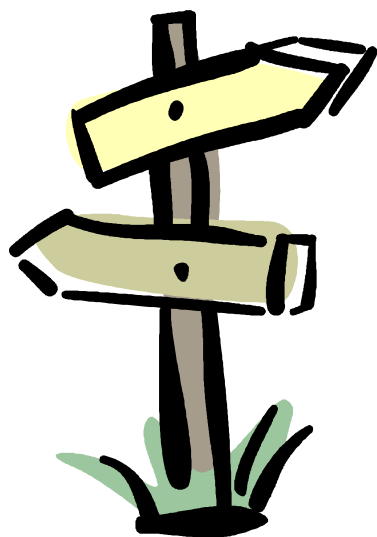


Multnomah County Department of Community Justice



Reduced Supervision Team

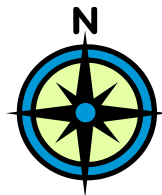


503-988-3680



<http://web.multco.us/dcj-adult/rst>

How to Navigate Through Your Probation!



The Reduced Supervision Team (RST) is a formal Probation/Parole /Post-Prison Supervision (PPS) office that tracks your formal supervision to completion.

What makes this Probation/Parole/PPS different from traditional Probation /Parole / (PPS) is that you are not required to see a Probation/Parole Officer (PPO). Instead, you are **required to report any changes in your address or your employment, and call for all out of state travel permits.** Report immediately if you are arrested and/or released from jail.

During your intake process or with your former PPO, your conditions of supervision were explained to you and you signed that you understood the conditions ordered. **IT IS YOUR RESPONSIBILITY TO COMPLETE THE CONDITIONS OF SUPERVISION.** You must keep any appointment(s) that was scheduled for you and/or make appointments yourself using the phone numbers you were provided.

Visit our website
to submit
address/phone/employment
changes, travel permit
requests and for information

<http://web.multco.us/dcj-adult/rst>

~ OR ~

Call 503-988-3680

to leave a message

Menu



Options

-**Press 1** if you know the extension of the person you're trying to reach.

-**Press 2** if you speak Spanish.

-**Press 3** to leave a message to update your address, telephone and employment information.

-**Press 5** if you have questions about supervision fees or community

NOTE: Don't expect a call back if you are calling to leave information. Someone will note the information in your file. They will call you if they need any further information.

Frequently Asked Questions

Email questions:

reduced.supervision.team@multco.us

1. **Do I have a PPO?** Yes, you are assigned to a PO.
2. **Am I still on probation/parole /post prison supervision?** Yes, you are on formal supervision and have a PPO at RST.
3. **Do I need to contact my PPO?** Contact your PPO if you had Police contact or if you are unable to comply with a condition of your probation/ parole/post prison.
4. **What if I can't pay my supervision fees and/or my court fines?** You will need to call to work out an alternative payment plan.
5. **What if I can't pay restitution or compensatory fines?** This is money you owe the victim(s) of your crime. You **must** set up a payment plan within 30 days of your sentencing date, and need to contact the court's accounting department if you can't make your payment.
6. **Where do I pay my supervision fees?** You [can pay online](#). You can mail them to Multnomah County Supervision Fees, PO Box 742909, Los Angeles, CA 90074-2029. You can also pay them at the front desk at your probation office or Call toll free 1-866-792-0179. If you cannot pay your supervision fees, you will need to contact your PPO to work out a payment plan.

7. **Where do I pay my court fees?** You must pay the court where you were sentenced. Be sure to include your court case number on your check or money order.
8. **What should I do if my community service file is closed?** You must contact the judge's office to request a re-referral to community service.
9. **Can I move out of the state?** No, you must receive written permission from your PO, Oregon and the state to which you want to move before you can leave.
10. **Do you have bus tickets or do you pay for any services?** We do not have any funds for bus tickets or services such as treatment or housing.

Monthly reporting is not required at Reduced Supervision Team

You are on [formal Probation, Parole and/or Post-Prison Supervision \(PPS\)](#), but instead of reporting to your supervising officer every month, you must call this office only in certain situations:

Travel Permits – when you want/need to leave the State of Oregon, you must have permission from a PPO. [Call 10 days before you want to leave](#). Please leave specific information when you call. Dial the office phone number and then press #4, it will tell you the information you need to leave.

***You must be current on court fees/supervision fees if you need a travel permit.**

Change of residence phone or employment – if you are moving, or there are any changes to your employment, you must report that to the RST office within 48 hours. Dial the office phone number and then **press #3**. We will **not** call you back unless we need clarification of some portion of the information you leave.

Arrested and Released – if you are arrested and released from jail call the RST office. Call the office phone number, press 0 and ask to speak to the Officer of the Day. Leave the information that you were in custody, and have been released.

Important! Important!

Community Service

You need to enroll in Community Service promptly after completing Intake. If you fail to perform your community service hours as agreed, you will be terminated from the Community Service program. Upon termination, you must contact the judge for re-referral to Community Service.

RESTITUTION / COMPENSATORY FINES / COURT FEES:

Restitution is money the court ordered you to pay to a victim for losses resulting from the crime for which you were convicted. A payment plan must be set up.

Compensatory Fines is money the court ordered you to pay to a victim for injury resulting from the crime for which you were convicted.

Court Fees is money the court ordered you to pay to help pay court costs, attorney fees, penalties required by law, assessments and/or to help support specific programs.

If you were directed to pay any of these fines or fees to the court, you must contact your PO to set up a payment plan.

Payments must be made to the court in the county where you were convicted. You must be current with your payments to the court to be eligible for a Travel Permit.

Supervision Fees

\$35 per month - mail check or money order to: **Multnomah County Supervision Fees**

PO Box 742909
Los Angeles, CA 90074-2029

Or go to our website:

<http://web.multco.us/dcj-adult/supervision-fees>

•••••
PHONE NUMBERS YOU MAY NEED

COURT FEES

Don't forget to put the case number on all checks or money orders. You may also pay in person at each courthouse.

Multnomah County Courthouse

Financial Obligations
PO Box 114
Portland, OR 97207
503-988-6031

Clackamas County Courthouse

Accounting Dept.
807 Main St. Rm 104
Oregon City, OR 97045
503-655-8435

Washington County Courthouse

Circuit Court Clerk
150 N. First
Hillsboro, OR 97124
503-846-8888

OFFICE PHONE NUMBER 503-988-3680

TSI to JAIL

Multnomah Co. 503 988-3276
Washington Co. 503 846-2600
Clackamas Co. 503 655-8331

WORK RELEASE

Washington Co. 503 846-8818
Clackamas Co. 503 655-8262

COMMUNITY SERVICE

Multnomah Co. 503 988-3007
Washington Co. 503 846-3400
Clackamas Co. 503 655-8727

ALCOHOL & DRUG EVALUATIONS

DUII Evaluations:
ADES of Portland 503-719-5741
Victims Panel 503-413-4960

Up In Smoke – Marijuana Education
503-491-9748

Impact NW 503-988-6000
10055 E. Burnside Street, Portland

DCJ ARC – Mead Bld. 503-988-8482
421 SW 5th Avenue, Portland

OTHERS

Theft Talk 503 771-2542

Prison Tours:

OSP Men 503 378-2442
CCCF Women 503 570-6412

Londer Learning Center (GED)
503 988-3466

NTSI 800-988-6874
(National Traffic Safety Institute)

ANGER MANAGEMENT

Men's Resource Center 503 235-3433
Choices 503 239-7597

COMMUNITY RESOURCES

Employment Assistance:

Central City Concern 503 226-7387
Employee Access Center
2 NW 2nd Ave. Portland

Better People 503 281-2663

Worksource Portland Metro:

Central Office 503 280-6046
30 N. Webster St., Suite E, Portland

SE Office 503 772-2300
6927 SE Foster Rd., Portland

East Office 503 669-7112
19421 SE Stark St., Gresham

Tri-Met Information: 503 238-7433

MENTAL HEALTH

Women's Crisis Line: 503 235-5333

Cascadia Urgent Walk-in Clinic:
503 963-2575

Multnomah Co. Crisis Hotline:
503 988-4888

MULT VETERANS' SERVICES OFFICE
(503) 988-3620 x25005

NEED HEALTH CARE?

CoverOregon.com 1-855-268-3767