



## Elections Division

# VOTERS' PAMPHLET



# PRIMARY ELECTION

May 20, 2014



### ATTENTION

This is the beginning of your county voters' pamphlet. The county portion of this joint voters' pamphlet is inserted in the center of the state portion. Each page of the county voters' pamphlet is clearly marked with a color bar on the outside edge. All information contained in the county portion of this pamphlet has been assembled and printed by your County Elections office.

This pamphlet produced by Multnomah County Elections Division, 1040 SE Morrison St. Portland OR 97214. 503-988-3720. [www.mcelections.org](http://www.mcelections.org)

### Dear Multnomah County Voter:

This part of your Voters' Pamphlet is provided by Multnomah County Elections Division. It includes information about candidates and measures from local jurisdictions within the boundaries of Multnomah County. We have inserted the County's Voter Pamphlet to save on mailing and production costs. The State Pamphlet (on either side of the color bar portion) includes federal and state candidates.

Here are a few things you should know:

- You can view your registration status by visiting MyVote at [www.oregonvotes.gov](http://www.oregonvotes.gov). There you can check or update your voter registration or track your ballot.
- **Ballots will be mailed on Wednesday, April 30, 2014.**
- If you are registered as a Democrat or Republican, you will receive a ballot containing your party's candidates, the non-partisan candidates and the measures. You will also receive a precinct committeeperson ballot for your political party.
- **If you are not registered as a Democrat or Republican, you will receive a ballot containing the non-partisan candidates and measures.**
- Voters may change their party by registering online (with Oregon DMV ID) or completing a new registration card. **Party changes must be completed by April 29<sup>th</sup>: in person by 5 PM, by mail postmarked April 29 or by online registration by 11:59 PM.**
- Please note the two separate contests for Multnomah County Chair on the ballot. One is for the unexpired term through December 2014. The other is for a new term beginning in January 2014. The Voters' Pamphlet lists the candidates who submitted a statement only once. You may vote for both contests.
- Not all the candidates or measures in this Voters' Pamphlet will be on your ballot. Your residence address determines those districts for which you may vote. Your official ballot will contain the candidates and issues which apply to your residence.
- Voted ballots **MUST** be received at any County Elections Office or drop site location by **8:00 PM, Tuesday, May 20, 2014** to be counted
- This Voters' Pamphlet is on our website: [www.mcelections.org](http://www.mcelections.org). Starting at 8:00 PM on election night, preliminary election results will be posted on our website and updated throughout the evening.

If you have any questions you can contact our office at: 503-988-3720.

Sincerely,



Tim Scott

Multnomah County Director of Elections

**PLEASE NOTE: Multnomah County Elections prints information as submitted. We do not correct spelling, punctuation, grammar, syntax, errors or inaccurate information.**

# Reading the voters' pamphlet



This part of your Voters' Pamphlet is provided by Multnomah County Elections Division. It includes information about candidates and measures from local jurisdictions within the boundaries of Multnomah County. We have inserted this County Pamphlet to save on mailing and production costs. The State Pamphlet (on either side of the color bar portion) includes federal and state candidates.

You'll find statements provided by candidates running for office. Not all candidates submitted a statement. You'll also find ballot measures and measure arguments. Keep in mind that Multnomah County Elections does not write or edit these statements. Multnomah County Elections does not fact check or correct punctuation, grammar, syntax errors or inaccurate information.

You can view your registration status by visiting My Vote at [www.oregonvotes.gov](http://www.oregonvotes.gov). There you can check or update your voter registration or track your ballot

Ballots will be mailed beginning on Wednesday, April 30, 2014. Look for the ballot soon after. If you don't receive your ballot by Thursday, May 8, 2014, please call Multnomah County Elections at 503-988-3720.

## Table of contents

### General Information

Letter to voter.....	M-01
Reading the voters' pamphlet and table of contents.....	M-02
Index of candidates and measures.....	M-03
Voting is as easy as 1 – 2 – 3.....	M-04
Returning your ballot.....	M-05
Map of Multnomah County and Metro Districts.....	M-48



### Candidates

#### Multnomah County

Chair of the Board (unexpired & 4-year term).....	M-06
Commission Dist. 1.....	M-09
Commission Dist. 2.....	M-10
Auditor and Sheriff.....	M-12

#### City of Portland

Commissioner, Pos. 2.....	M-13
Commissioner, Pos. 3.....	M-15
Auditor.....	M-17

#### Metro

Metro Council President.....	M-18
Auditor.....	M-19
Metro Councilor, 1 <sup>st</sup> & 2 <sup>nd</sup> District.....	M-20

### Ballot Measures

#### City of Portland

Measure 26-156.....	M-21
Arguments in Favor.....	M-22
Arguments in Opposition.....	M-26

#### City of Gresham

Measure 26-157.....	M-35
Arguments in Favor.....	M-36
Argument in Opposition.....	M-38

#### Corbett School District

Measure 26-158.....	M-39
Argument in Opposition.....	M-40

#### Tualatin Valley Fire & Rescue District

Measure 34-211.....	M-41
Arguments in Favor.....	M-42

#### Beaverton School District

Measure 34-219.....	M-44
Arguments in Favor.....	M-45

Your vote counts!



# Index of Candidates and Measures on the ballot



Not all candidates submitted a Voters' Pamphlet statement. Below is an alphabetical list of all candidates on the ballot for Multnomah County, City of Portland and Metro. State and Federal candidate information can be found in the State Voters' Pamphlet information. Measures and measure arguments are also listed below.

Candidate Name (last, first)	Page Number
Bailey, Jules.....	M-09
Broussard, Bruce.....	M-10
Burkett, Patty.....	M-06
Caleb, Nicholas.....	M-15
Collette, Carlotta.....	M-20
Craddick, Shirley.....	M-20
Dumas, Leah Marie.....	<i>No statement filed.</i>
Durrow, Michael W.....	M-13
Evans, Brian.....	M-19
Fish, Nick.....	M-13
Francesconi, Jim.....	M-06
Hall, Kelvin.....	<i>No statement filed.</i>
Hughes, Tom.....	M-18
Hull Caballero, Mary.....	M-17
Johnson, Jeremiah William.....	M-18
Kafoury, Deborah.....	M-07
March, Steve.....	M-12
Maxwell, Sharon.....	M-14
Meyer, Joe.....	M-15
Montas, Aquiles .....	<i>No statement filed.</i>
Raiford, Teresa.....	M-10
Reynolds, Steven.....	M-07
Rowell, James O.....	<i>No statement filed.</i>
Saltzman, Dan.....	M-16
Smith, Loretta.....	M-11
Soderback, Wes.....	M-08
Staton, Dan.....	M-12
Wilson, Brian.....	M-09
Measures & Arguments	Page Number
Measure 26-156.....	M-21
Measure 26-157.....	M-35
Measure 26-158.....	M-39
Measure 34-211.....	M-41
Measure 34-219.....	M-44



**Multnomah County Elections**  
**1040 SE Morrison St.**  
**Portland OR 97214**

**Phone: 503-988-3720**

**E-mail: [elections@multco.us](mailto:elections@multco.us)**

**Website: [www.mcelections.org](http://www.mcelections.org)**

**Facebook:**  
**Multnomah County Elections**  
**<http://on.fb.me/16J9QZA>**

**Twitter:**  
**[@MultCoElections](https://twitter.com/MultCoElections)**

# Voting is as Easy as 1 – 2 – 3

## Instructions for completing your ballot.

### 1. Examine your official ballot and vote it.

Examine your Official Ballot. Locate the candidate or measure response (YES or NO) of your choice for each contest. To vote, you must completely darken the oval to the left of the response of your choice with black or blue ink.

To vote for a write-in candidate, one whose name does not appear on the Official Ballot, completely darken the oval to the left of the solid line provided for the office and write the full name of the candidate on that line.

**Remember:** If you vote for more than the number of candidates allowed for an office, or you vote both YES and NO on a measure, it is called an **OVERVOTE**, and your vote for that position or measure will **NOT** be counted.

### 2. Review your ballot and prepare to return it.

Ensure you have correctly marked your choice for each contest. Your official ballot will contain contests printed on both front and back.

If you make an error on your ballot, damage it in any way or lose it, contact the Multnomah County Elections Division at 503-988-3720 to request assistance.

**Prepare to return your voted ballot.** Place the ballot in the return envelope. You may use the optional secrecy envelope, but it is not required. Election staff will ensure the secrecy of your ballot.

**Remember: Read the Voter's Statement on the return envelope and sign it on the signature line.**

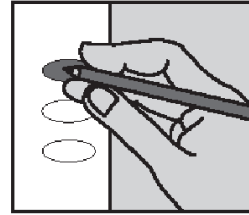
Your ballot will not be counted if the return envelope is not signed. Every signature is checked against the registration signature on file and the signature must match for the ballot to be counted.

### 3. Return your ballot.

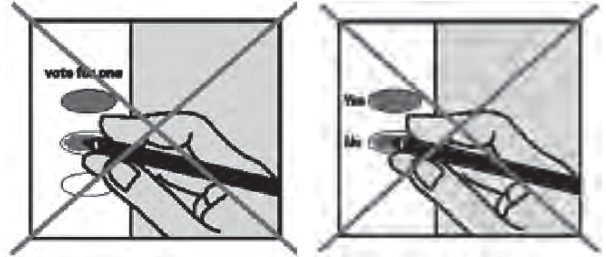
- **By mail:** Attach first-class postage to the signed and sealed return identification envelope. Mail it as soon as possible to arrive at the Multnomah County Elections Division no later than 8:00 p.m. on Election Day. A postmark does not count!
- **In person at an official drop site:** Deliver the signed and sealed return identification envelope to any official drop site no later than 8:00 p.m. on Election Day. Postage is **NOT** required if delivered to an official ballot drop box location.

## check your ballot!

Make sure you have completely filled in the oval next to your choices.



If you vote for more candidates than allowed or if you vote **both Yes and No** on a measure, it is called an **overvote**. Your vote **will not count** for that candidate or measure.



You don't have to vote in all contests. Your other votes will still count.

You cannot change your vote once you've mailed or dropped off your ballot.

Contact Multnomah County Elections Division to request assistance if:

- you make a mistake
- your ballot is damaged
- your ballot is lost

or for any other reason.

Contact: Multnomah County Elections Division  
phone: 503-988-3720  
website: [www.mcelections.org](http://www.mcelections.org)  
email: [elections@multco.us](mailto:elections@multco.us)  
Oregon Relay Service: 1-800-735-2900  
Skype: [multnomah.county.elections](http://multnomah.county.elections)



# Returning your ballot

Voting begins as soon as you receive your ballot in the mail. Consider returning it early to be counted in election night results and to have time to resolve any issues.



## Through the Mail

You can vote and return your ballot through the U.S. Postal Service as soon as you receive it. One 1<sup>st</sup> class or Forever Stamp is all you need to mail the ballot back in Multnomah County. Your ballot must be received by 8:00 p.m. Election Day.



## Official Ballot Drop Boxes

You can return your ballot to an Official Drop Box by 8:00 p.m. Election Day. Locations in Multnomah County are listed below. Ballots may be delivered to any Official Ballot Drop Box in Oregon until 8:00 p.m. Election Day.

## 24-Hour Official Ballot Drop Boxes

**A-BOY SUPPLY** - 7365 SW Barbur Blvd.

**GOODWILL STORE** - 3134 North Lombard St.

**MCDONALD'S RESTAURANT** - West side of NE 40th Ave. between NE Tillamook St. and NE Hancock St. (Near the Hollywood Library.)

**MULTNOMAH COUNTY ELECTIONS OFFICE** - 1040 SE Morrison St. Portland

Two Drop Box locations. Box located on the East Side of **SE 11<sup>th</sup>** Ave. between SE Morrison St. and SE Belmont St. Another box located on the North Side of **SE Belmont** St. between SE 10<sup>th</sup> Ave. and SE 11<sup>th</sup> Ave.

**GRESHAM BRANCH LIBRARY** - 385 NW Miller Ave.

**MIDLAND BRANCH LIBRARY** - 805 SE 122<sup>nd</sup> Ave.

**PIONEER COURTHOUSE SQUARE** - 700 block of SW Broadway (next to Starbucks and across from Nordstrom)

## Library Official Ballot Drop Sites



Voted ballots may be delivered to any Multnomah County library from the day ballots are mailed until 8:00 PM on Election Day, during library hours. An official ballot drop box is securely located inside each library; library hours are listed below. For 24-hour access, please use the 24-hour drop sites listed above or the ballot/book return at Central Library.

**Central Library** - 801 SW 10th Ave.

- Monday - 10 am - 8 pm
- Tuesday - noon - 8 pm
- Wednesday - noon - 8 pm
- Thursday - 10 am - 6 pm
- Friday - noon - 6 pm
- Saturday - 10 am - 6 pm
- Sunday - 10 am - 5 pm

**Belmont Library** - 1038 S.E. César E. Chávez Blvd.

**Gresham Library** - 385 NW Miller Ave., Gresham

**Hillsdale Library** - 1525 SW Sunset Blvd.

**Hollywood Library** - 4040 NE Tillamook St

**Midland Library** - 805 SE 122nd

- Monday - 10 am - 6 pm
- Tuesday - 10 am - 8 pm
- Wednesday - noon - 8 pm
- Thursday - noon - 8pm
- Friday - 10 am - 6 pm
- Saturday - 10 am - 6 pm
- Sunday - 10 am - 5 pm

**Albina Library** - 3605 NE 15th Ave.

**Capitol Hill Library** - 10723 SW Capitol Highway

**Fairview-Columbia Library** - 1520 NE Village St., Fairview

**Gregory Heights Library** - 7921 NE Sandy Blvd.

**Holgate Library** - 7905 SE Holgate Blvd.

**Kenton Library** - 8226 N. Denver Ave.

**North Portland Library** - 512 N Killingsworth St.

**Northwest Library** - 2300 NW Thurman St.

**Rockwood Library** - 17917 SE Stark St.

**St. Johns Library** - 7510 N Charleston Ave.

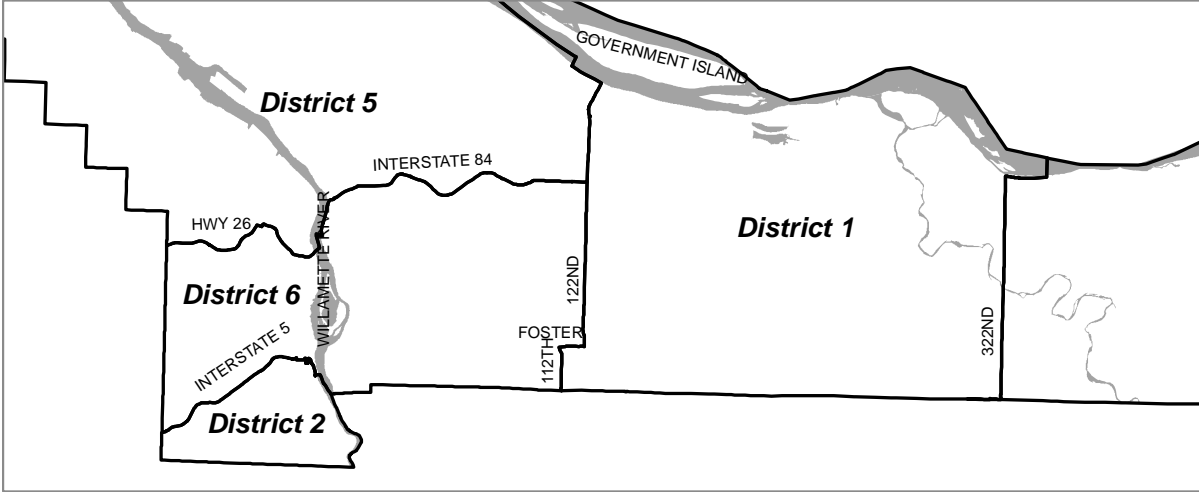
**Sellwood-Moreland Library** - 7860 SE 13th Ave.

**Troutdale Library** - 2451 SW Cherry Park Rd., Troutdale

**Woodstock Library** - 6008 SE 49th Ave.

- Monday noon - 8 pm
- Tuesday noon - 8 pm
- Wednesday 10 am - 6 pm
- Thursday 10 am - 6 pm
- Friday 10 am - 6 pm
- Saturday 10 am - 6 pm
- Sunday noon - 5 pm

# METRO COUNCIL DISTRICTS



# MULTNOMAH COUNTY COMMISSIONER DISTRICTS

