

H:\profile\17944 - Multnomah County Comprehensive Plan\gis\Final TSP document\01 Study Area.mxd

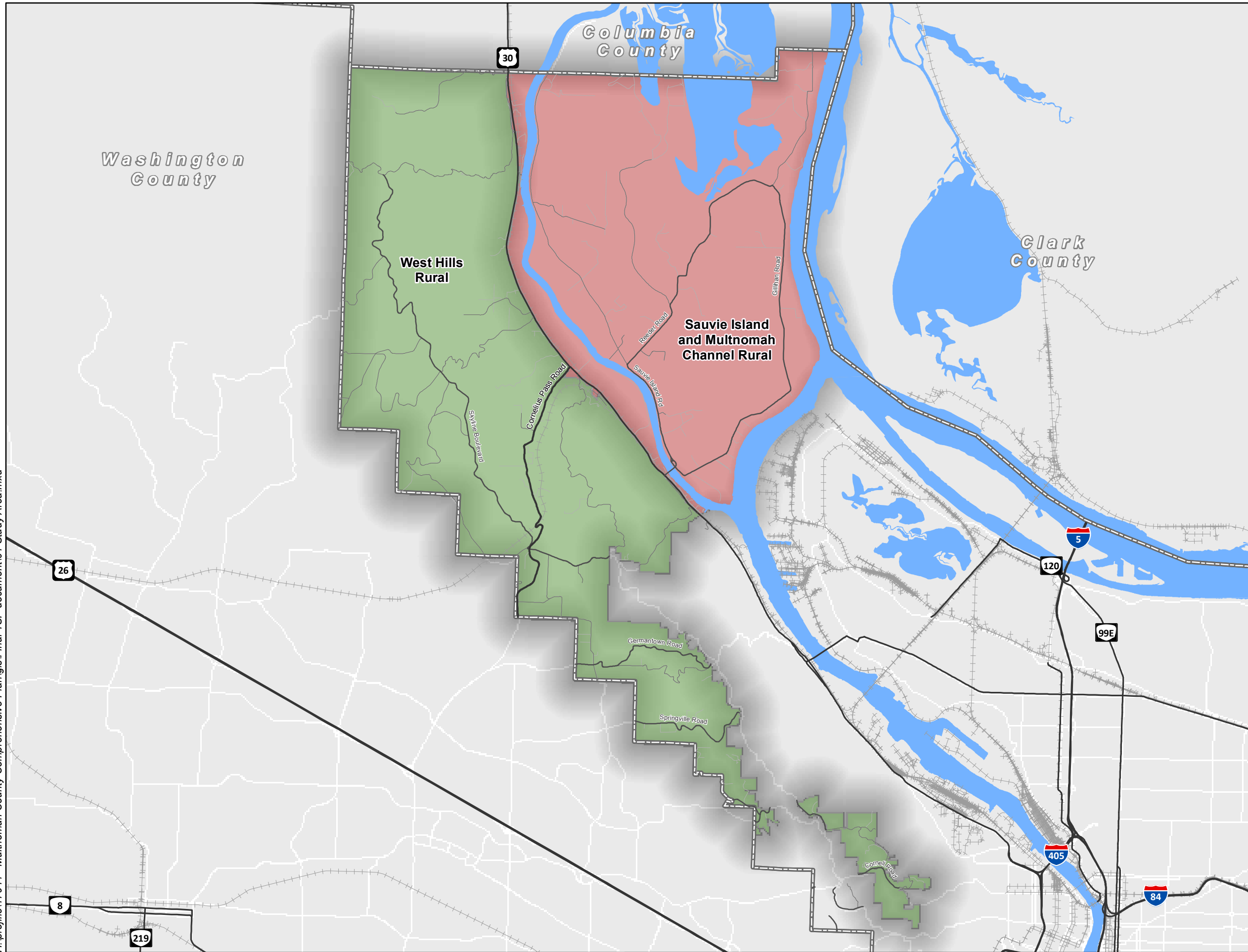





Figure 1A
Study Area

- Plan Areas**
-  Sauvie Island and Multnomah Channel Rural
 -  West Hills Rural
 -  County Boundaries

0 0.5 1 2 Miles



Prepared By: Kittelson & Associates, Inc. Date: 2/18/2016

Coordinate System:
NAD 1983 HARN State Plane Oregon North FIPS 3601

Disclaimer:
This map is intended for informational purposes only. While this map represents the best data available at the time of publication, Multnomah County makes no claims, representations, or warranties as to its accuracy or completeness. Metadata available upon request.