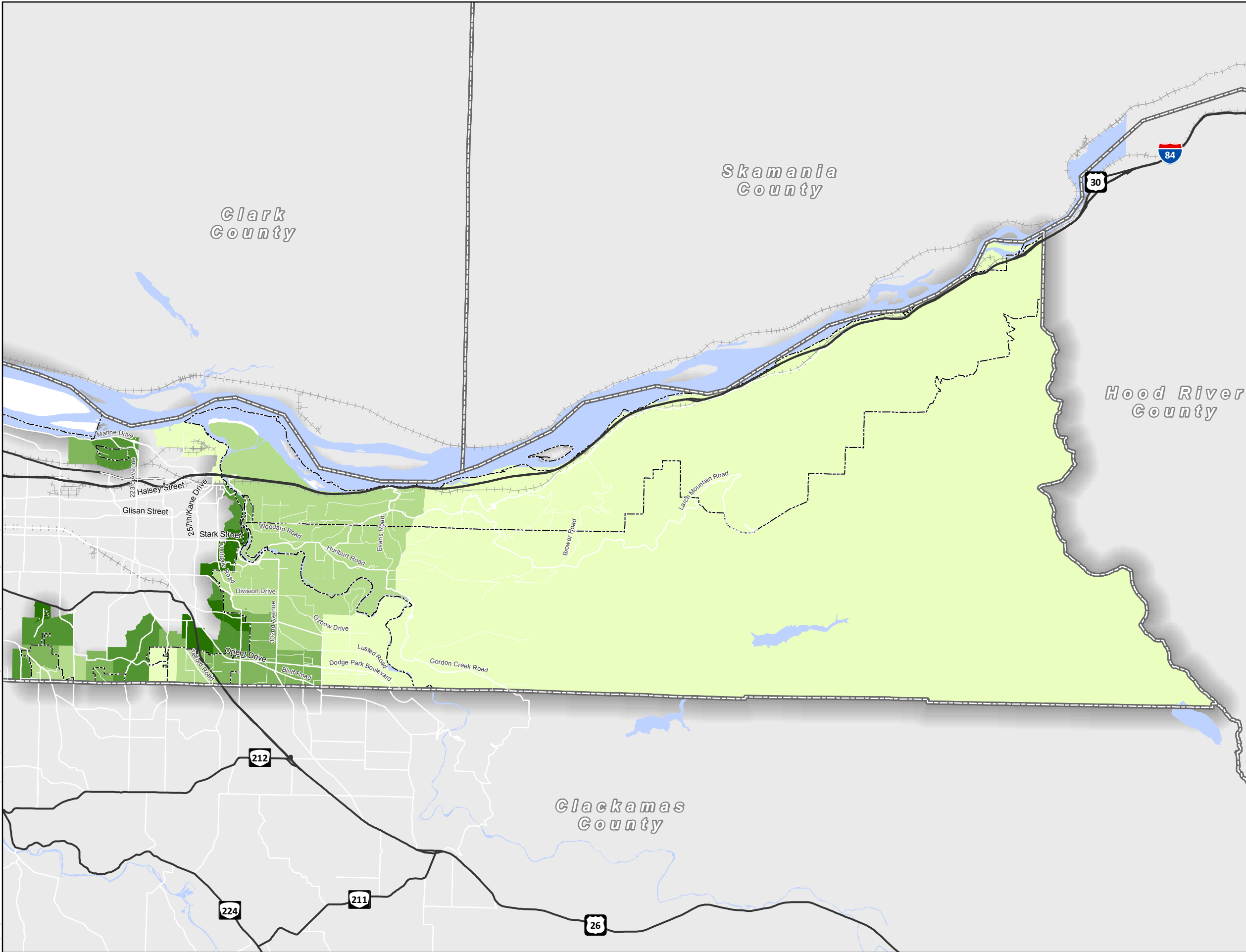


H:\profile\17944 - Multnomah County Comprehensive Plan\gis\02 Existing Housing Density.mxd



## Comprehensive Plan

**Figure 2B**  
Existing Household  
Density

### Existing Housing Density / Households per Acre by TAZ

- 0.00 - 0.07
  - 0.08 - 0.16
  - 0.17 - 0.60
  - 0.61 - 2.03
  - 2.04 - 4.52
- Plan Areas
- County Boundaries

0 1 2 4 Miles



Prepared By: Kittelson & Associates, Inc. Date: 2/18/2016

Coordinate System:  
NAD 1983 HARN State Plane Oregon North FIPS 3601

**Disclaimer:**  
This map is intended for informational purposes only. While this map represents the best data available at the time of publication, Multnomah County makes no claims, representations, or warranties as to its accuracy or completeness. Metadata available upon request.