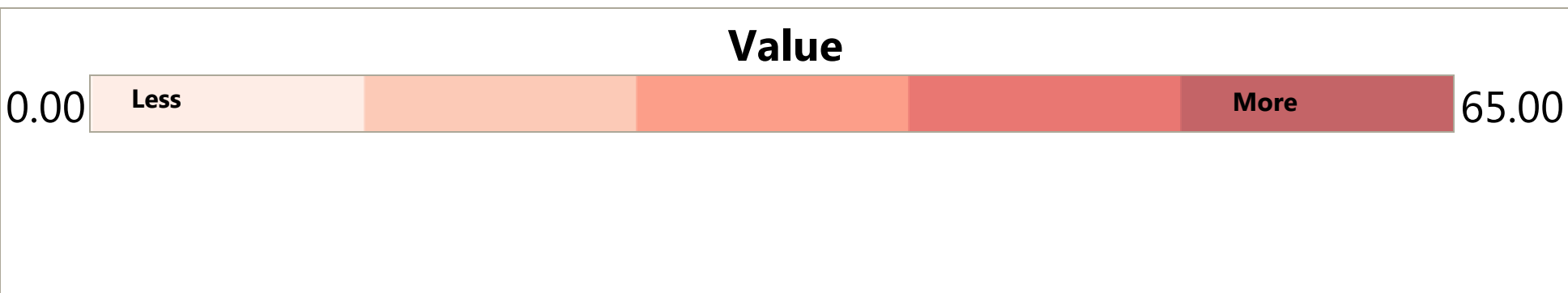


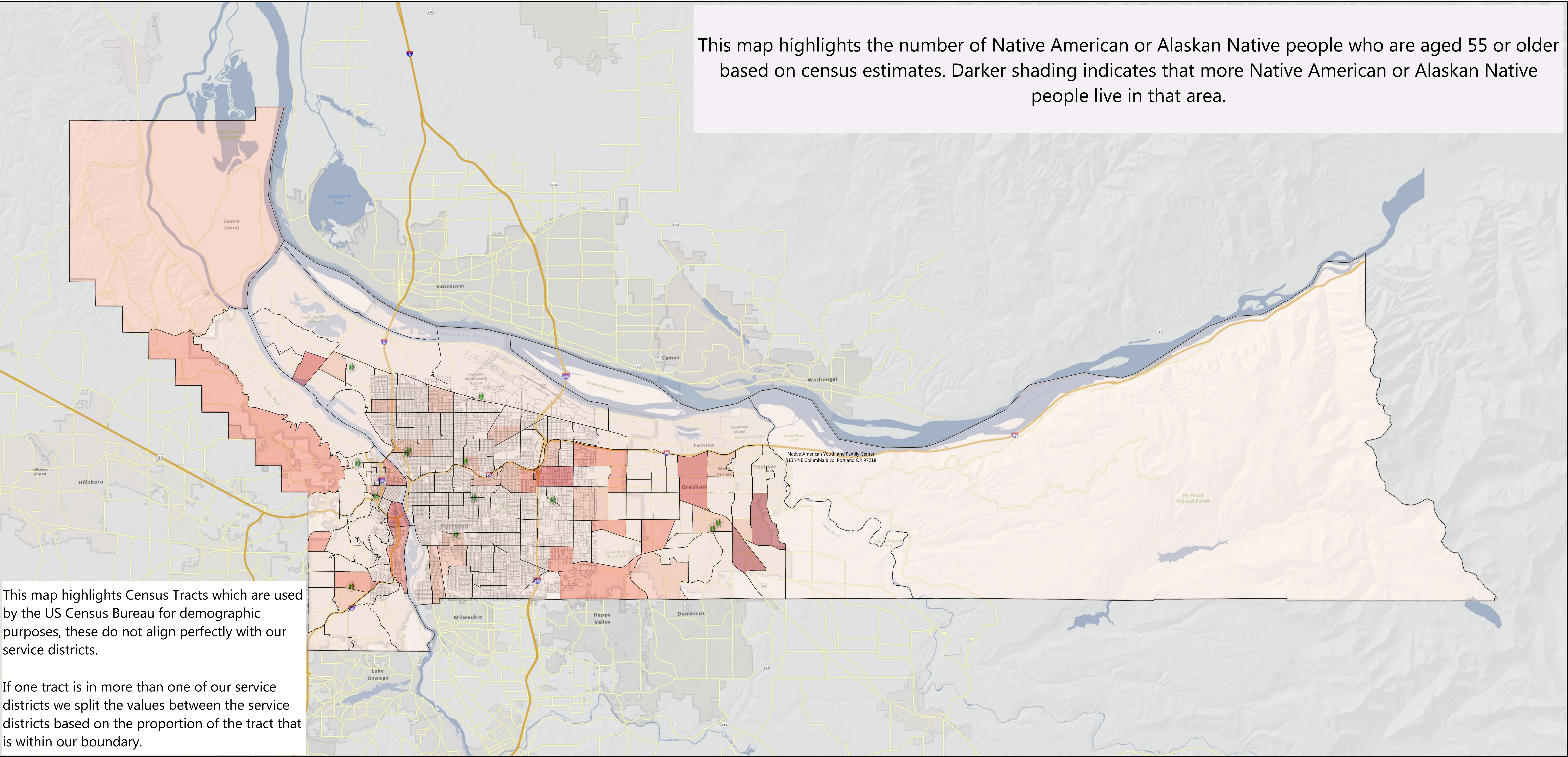
American Indian or Alaskan Native Aging Profile



Figures based on 2014 American Community Survey 5-yr estimates by 2010 Census Tracts. Figures are estimates, boundaries are approximate.



This map highlights the number of Native American or Alaskan Native people who are aged 55 or older based on census estimates. Darker shading indicates that more Native American or Alaskan Native people live in that area.



This map highlights Census Tracts which are used by the US Census Bureau for demographic purposes, these do not align perfectly with our service districts.

If one tract is in more than one of our service districts we split the values between the service districts based on the proportion of the tract that is within our boundary.

Additional Detail of the American Indian / Alaskan Native Population:

	EAST	MID	N/NE	SE	WEST
Multnomah County Population	153,863	159,114	184,868	126,962	132,564
Race: Part American Indian / Alaskan Native	4,289	4,099	4,714	2,690	2,834
American Indian / Alaskan Native ONLY	1,794	1,397	1,600	908	784
Disabled Adults: American Indian / Alaskan Native	311	405	283	199	161
Under FPL: American Indian / Alaskan Native	722	572	633	248	133
Under FPL: 55+ American Indian / Alaskan Native	36	120	109	15	33
60+ Population	26,064	27,852	28,118	20,008	26,922
60+ Minority	3,547	6,304	7,129	3,111	2,646
55+ American Indian / Alaskan Native	302	326	280	132	263

Selected measures that result in map shading:

	EAST	MID	N/NE	SE	WEST
AGE RACE (55-64 American Indian / Alaskan Native)	133	128	186	75	129
AGE RACE (65-74 American Indian / Alaskan Native)	89	135	94	46	107
AGE RACE (75-84 American-Indian / Alaskan Native)	64	30	0	9	0
AGE RACE (85+ American-Indian / Alaskan Native)	16	34	0	2	27