

SE PORTLAND
RESIDENTIAL LAND (R5a)
PUBLIC SALE MARCH 20, 2017
9:00 am Registration | 10:00 am Sale
501 SE HAWTHORNE, PORTLAND, OR

7836 SE 66th PI
Portland, OR 97206
Tax Account: R121625
Map Tax Lot: 1S2E20CB -17500
Lot Size: 0.12 Acres (5,200 SF)
Minimum Price: \$75,000
Earnest Money: \$15,000



Property may have mold, lead paint and other conditions which render the improvements NOT habitable and without economic potential. Valuation expectations are as redevelopment land. Property to be sold at the Public Sale to the highest and best bid that meets the minimum price with an optional Earnest Money Agreement-Inspection Waiver. Interior access prior to closing may require specialized environmental personnel with personal protective equipment. More information, including Public Sale List, Procedures, and Schedules: multco.us/taxtitle



MULTNOMAH COUNTY TAX TITLE PUBLIC SALE MARCH 20, 2017



DISCLAIMER

All properties are sold “AS IS” Potential buyers should thoroughly investigate all aspects of a property prior to bidding. Multnomah County does not guarantee or warrant that any parcel is usable for any particular purpose.

Please be advised that County employees are not authorized to answer specific questions regarding the properties, including but not limited to: the size, the condition, the planning, zoning or building codes or regulations applicable thereto. Any statement by a County employee on these matters is not binding on the County; except and unless such a statement is made by a County Land Use Planning Division staff member in the context of a formal land use decision wherein the County is the land use planning jurisdiction with respect to the subject property

The information contained herein has been obtained through sources deemed reliable by Multnomah County but cannot be guaranteed for its accuracy. It is highly recommended buyer and interested parties independently verify any information.

multco.us/taxtitle



MULTNOMAH COUNTY TAX TITLE PUBLIC SALE MARCH 20, 2017

NE PORTLAND
RESIDENTIAL LAND (R7h)
PUBLIC SALE MARCH 20, 2017
9:00 am Registration | 10:00 am Sale
501 SE HAWTHORNE, PORTLAND, OR

10304 NE Beech St
Portland, OR 97220
Tax Account: R235485
Map Tax Lot: 1N2E22CC -07200
Lot Size: 0.22 Acres (9,750 SF)
Minimum Price: \$100,000
Earnest Money: \$20,000



Property may have mold, lead paint and other conditions which render the improvements NOT habitable and without economic potential. Valuation expectations are as redevelopment land. Property to be sold at the Public Sale to the highest and best bid that meets the minimum price with an optional Earnest Money Agreement-Inspection Waiver. Interior access prior to closing may require specialized environmental personnel with personal protective equipment. More information, including Public Sale List, Procedures, and Schedules: multco.us/taxtitle



MULTNOMAH COUNTY TAX TITLE PUBLIC SALE MARCH 20, 2017



DISCLAIMER

All properties are sold “AS IS” Potential buyers should thoroughly investigate all aspects of a property prior to bidding. Multnomah County does not guarantee or warrant that any parcel is usable for any particular purpose.

Please be advised that County employees are not authorized to answer specific questions regarding the properties, including but not limited to: the size, the condition, the planning, zoning or building codes or regulations applicable thereto. Any statement by a County employee on these matters is not binding on the County; except and unless such a statement is made by a County Land Use Planning Division staff member in the context of a formal land use decision wherein the County is the land use planning jurisdiction with respect to the subject property

The information contained herein has been obtained through sources deemed reliable by Multnomah County but cannot be guaranteed for its accuracy. It is highly recommended buyer and interested parties independently verify any information.



multco.us/taxtitle

MULTNOMAH COUNTY TAX TITLE PUBLIC SALE MARCH 20, 2017



SE PORTLAND
MULTIFAMILY LAND (R2a)
PUBLIC SALE MARCH 20, 2017
9:00 am Registration | 10:00 am Sale
501 SE HAWTHORNE, PORTLAND, OR

3310 N/ SE 127TH PL
Portland, OR 97236
Tax Account: R334310
Map Tax Lot: 1S2E11BC -07600
Lot Size: 0.25 Acres (10,720 SF)
Minimum Price: \$100,000
Earnest Money: \$20,000



Valuation expectations are as land. Property to be sold at the Public Sale to the highest and best bid that meets the minimum price with an optional Earnest Money Agreement-Inspection Waiver. Interior access to fenced area prior to Public Sale at scheduled Open Houses. More information, including Public Sale List, Procedures, and Schedules: multco.us/taxtitle



MULTNOMAH COUNTY TAX TITLE PUBLIC SALE MARCH 20, 2017

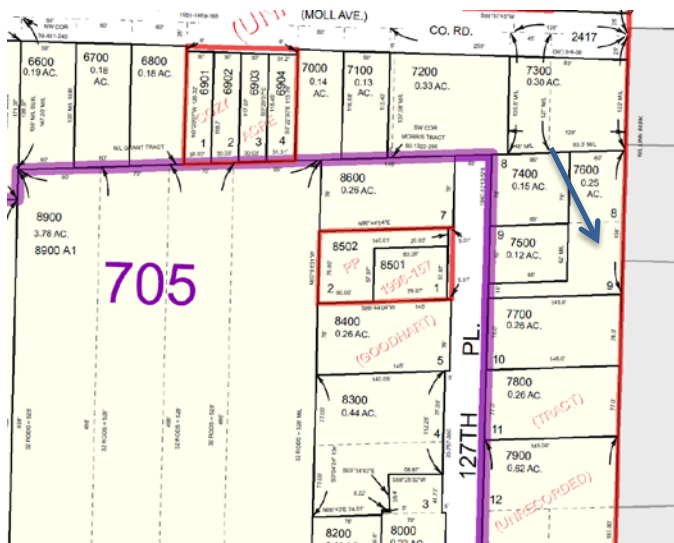


DISCLAIMER

All properties are sold “AS IS” Potential buyers should thoroughly investigate all aspects of a property prior to bidding. Multnomah County does not guarantee or warrant that any parcel is usable for any particular purpose.

Please be advised that County employees are not authorized to answer specific questions regarding the properties, including but not limited to: the size, the condition, the planning, zoning or building codes or regulations applicable thereto. Any statement by a County employee on these matters is not binding on the County; except and unless such a statement is made by a County Land Use Planning Division staff member in the context of a formal land use decision wherein the County is the land use planning jurisdiction with respect to the subject property

The information contained herein has been obtained through sources deemed reliable by Multnomah County but cannot be guaranteed for its accuracy. It is highly recommended buyer and interested parties independently verify any information.



multco.us/taxtitle



MULTNOMAH COUNTY TAX TITLE PUBLIC SALE MARCH 20, 2017

NE PORTLAND
SINGLE FAMILY RESIDENCE (R5a)
PUBLIC SALE MARCH 20, 2017
9:00 am Registration | 10:00 am Sale
501 SE HAWTHORNE, PORTLAND, OR

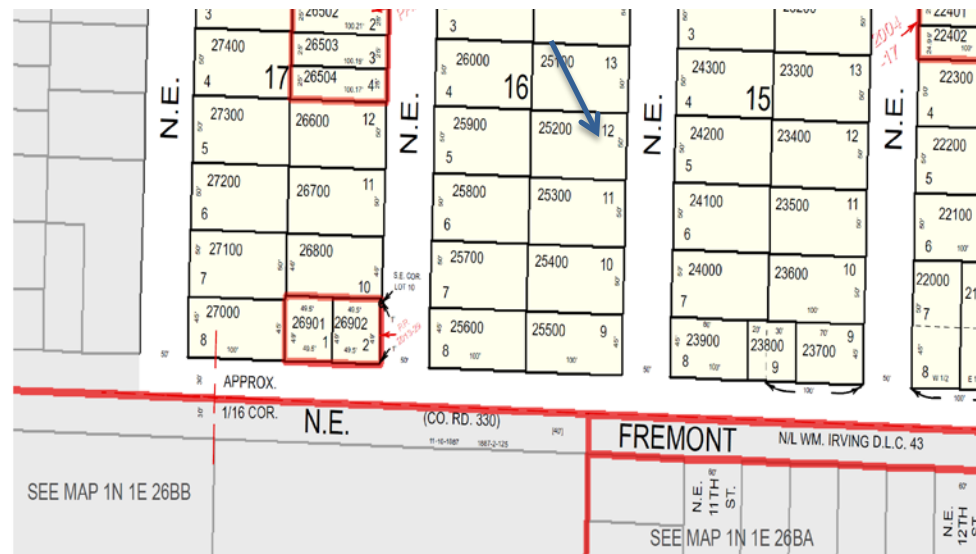
3533 NE 11TH AVE
Portland, OR 97212
Tax Account: R207111
Map Tax Lot: 1N1E23CD -25200
Lot Size: 0.11 Acres (5,000 SF)
Minimum Price: \$300,000
Earnest Money: \$60,000



Property to be sold at the Public Sale to the highest and best bid that meets the minimum price with an optional Earnest Money Agreement and Right to Lead-based Paint Inspection. Conveyance will be by quitclaim deed. Interior access prior to Public Sale at Open Houses to be announced. More information, including Public Sale List, Procedures, and Schedules: multco.us/taxtitle



MULTNOMAH COUNTY TAX TITLE PUBLIC SALE MARCH 20, 2017



DISCLAIMER

All properties are sold “AS IS” Potential buyers should thoroughly investigate all aspects of a property prior to bidding. Multnomah County does not guarantee or warrant that any parcel is usable for any particular purpose.

Please be advised that County employees are not authorized to answer specific questions regarding the properties, including but not limited to: the size, the condition, the planning, zoning or building codes or regulations applicable thereto. Any statement by a County employee on these matters is not binding on the County; except and unless such a statement is made by a County Land Use Planning Division staff member in the context of a formal land use decision wherein the County is the land use planning jurisdiction with respect to the subject property

The information contained herein has been obtained through sources deemed reliable by Multnomah County but cannot be guaranteed for its accuracy. It is highly recommended buyer and interested parties independently verify any information.

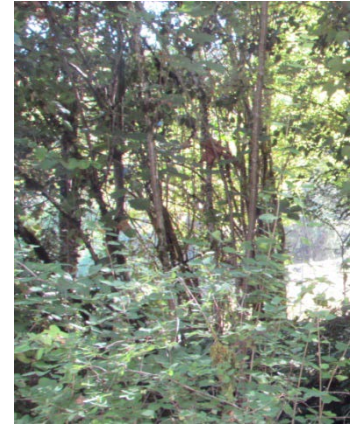
multco.us/taxtitle



MULTNOMAH COUNTY TAX TITLE PUBLIC SALE MARCH 20, 2017

SW PORTLAND
RESIDENTIAL LAND (R7c)
PUBLIC SALE MARCH 20, 2017
9:00 am Registration | 10:00 am Sale
501 SE HAWTHORNE, PORTLAND, OR

NW COR/ WOOD & NW HARRIS ST
Portland, OR 97231
Tax Account: R305590
Map Tax Lot: 1N1W11BD -04700
Lot Size: 0.11 Acres (5,000 SF)
Minimum Price: \$5,000
Earnest Money: \$1,000



Valuation expectations are as land. Property to be sold at the Public Sale to the highest and best bid that meets the minimum price with an optional Earnest Money Agreement-Inspection Waiver. More information, including Public Sale List, Procedures, and Schedules: multco.us/taxtitle



MULTNOMAH COUNTY TAX TITLE PUBLIC SALE MARCH 20, 2017

DISCLAIMER

All properties are sold “AS IS” Potential buyers should thoroughly investigate all aspects of a property prior to bidding. Multnomah County does not guarantee or warrant that any parcel is usable for any particular purpose.

Please be advised that County employees are not authorized to answer specific questions regarding the properties, including but not limited to: the size, the condition, the planning, zoning or building codes or regulations applicable thereto. Any statement by a County employee on these matters is not binding on the County; except and unless such a statement is made by a County Land Use Planning Division staff member in the context of a formal land use decision wherein the County is the land use planning jurisdiction with respect to the subject property

The information contained herein has been obtained through sources deemed reliable by Multnomah County but cannot be guaranteed for its accuracy. It is highly recommended buyer and interested parties independently verify any information.

multco.us/taxtitle



SE PORTLAND
SINGLE FAMILY RESIDENCE (R5)
PUBLIC SALE MARCH 20, 2017
9:00 am Registration | 10:00 am Sale
501 SE HAWTHORNE, PORTLAND, OR

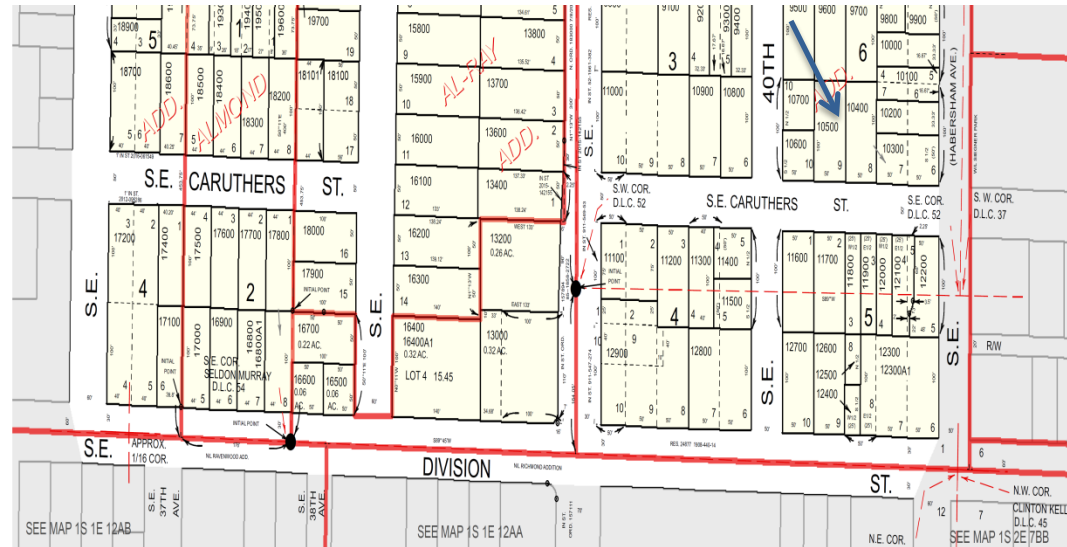
4013 SE CARUTHERS ST
Portland, OR 97214
Tax Account: R184140
Map Tax Lot: 1S1E01DD -10500
Lot Size: 0.11 Acres (5,000 SF)
Minimum Price: \$300,000
Earnest Money: \$60,000



Property to be sold at the Public Sale to the highest and best bid that meets the minimum price with an optional Earnest Money Agreement and Right to Lead-based Paint Inspection. Interior access prior to Public Sale at Open Houses to be announced. More information, including Public Sale List, Procedures, and Schedules: multco.us/taxtitle



MULTNOMAH COUNTY TAX TITLE PUBLIC SALE MARCH 20, 2017



DISCLAIMER

All properties are sold “AS IS” Potential buyers should thoroughly investigate all aspects of a property prior to bidding. Multnomah County does not guarantee or warrant that any parcel is usable for any particular purpose.

Please be advised that County employees are not authorized to answer specific questions regarding the properties, including but not limited to: the size, the condition, the planning, zoning or building codes or regulations applicable thereto. Any statement by a County employee on these matters is not binding on the County; except and unless such a statement is made by a County Land Use Planning Division staff member in the context of a formal land use decision wherein the County is the land use planning jurisdiction with respect to the subject property

The information contained herein has been obtained through sources deemed reliable by Multnomah County but cannot be guaranteed for its accuracy. It is highly recommended buyer and interested parties independently verify any information.

multco.us/taxtitle

MULTNOMAH COUNTY TAX TITLE PUBLIC SALE MARCH 20, 2017



SE PORTLAND
RESIDENTIAL LAND (R5a)
PUBLIC SALE MARCH 20, 2017
9:00 am Registration | 10:00 am Sale
501 SE HAWTHORNE, PORTLAND, OR

6922 SE 87TH Ave
Portland, OR 97266
Tax Account: R336601
Map Tax Lot: 1S2E21BA -12500
Lot Size: 0.26 Acres (11,125 SF)
Minimum Price: \$200,000
Earnest Money: \$40,000



Property may have mold, lead paint and other conditions which render the improvements NOT habitable and without economic potential. Valuation expectations are as redevelopment land. Property to be sold at the Public Sale to the highest and best bid that meets the minimum price with an optional Earnest Money Agreement-Inspection Waiver. Interior access prior to closing may require specialized environmental personnel with personal protective equipment. More information, including Public Sale List, Procedures, and Schedules: multco.us/taxtitle



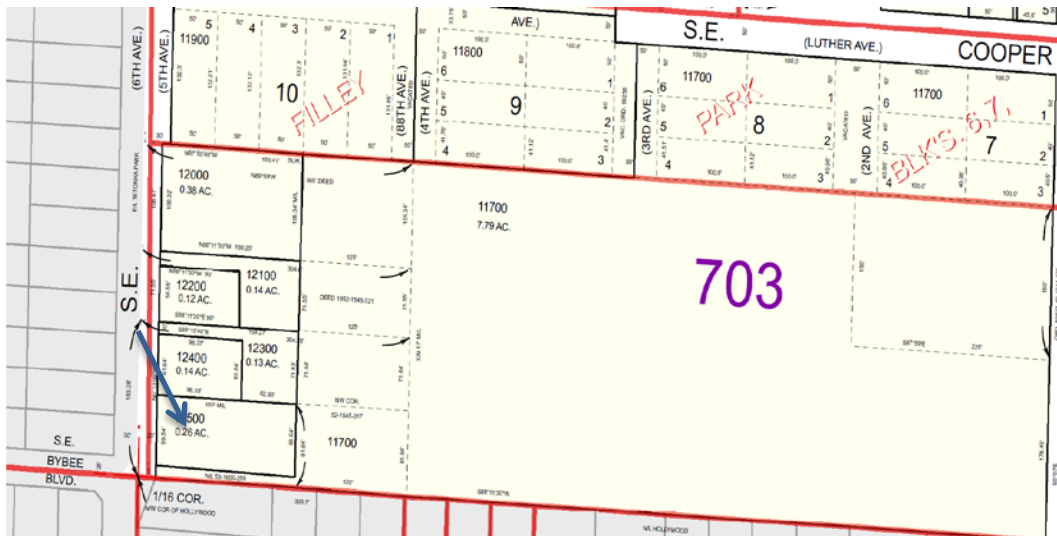
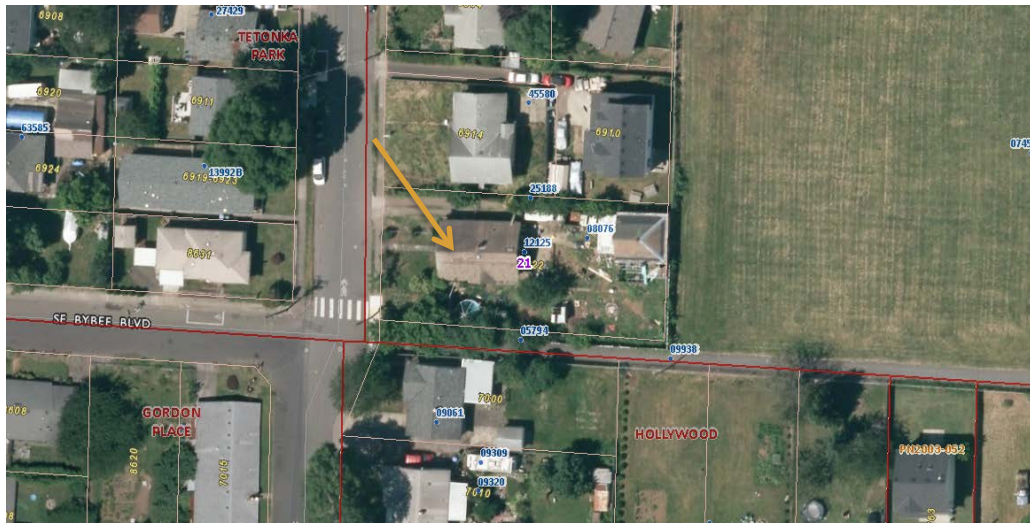
MULTNOMAH COUNTY TAX TITLE PUBLIC SALE MARCH 20, 2017

DISCLAIMER

All properties are sold "AS IS" Potential buyers should thoroughly investigate all aspects of a property prior to bidding. Multnomah County does not guarantee or warrant that any parcel is usable for any particular purpose.

Please be advised that County employees are not authorized to answer specific questions regarding the properties, including but not limited to: the size, the condition, the planning, zoning or building codes or regulations applicable thereto. Any statement by a County employee on these matters is not binding on the County; except and unless such a statement is made by a County Land Use Planning Division staff member in the context of a formal land use decision wherein the County is the land use planning jurisdiction with respect to the subject property

The information contained herein has been obtained through sources deemed reliable by Multnomah County but cannot be guaranteed for its accuracy. It is highly recommended buyer and interested parties independently verify any information.



multco.us/taxtitle



MULTNOMAH COUNTY TAX TITLE PUBLIC SALE MARCH 20, 2017

SE PORTLAND
MULTIFAMILY LAND (R1a)
PUBLIC SALE MARCH 20, 2017
9:00 am Registration | 10:00 am Sale
501 SE HAWTHORNE, PORTLAND, OR

8923 SE Reedway St
Portland, OR 97266
Tax Account: R115539
Map Tax Lot: 1S2E16CA-06800
Lot Size: 0.16 Acres (6,957 SF)
Minimum Price: \$125,000
Earnest Money: \$25,000



Property may have mold, lead paint and other conditions which render the improvements NOT habitable and without economic potential. Valuation expectations are as redevelopment land. Property to be sold at the Public Sale to the highest and best bid that meets the minimum price with an optional Earnest Money Agreement-Inspection Waiver. Interior access prior to closing may require specialized environmental personnel with personal protective equipment. More information, including Public Sale List, Procedures, and Schedules: multco.us/taxtitle



MULTNOMAH COUNTY TAX TITLE PUBLIC SALE MARCH 20, 2017

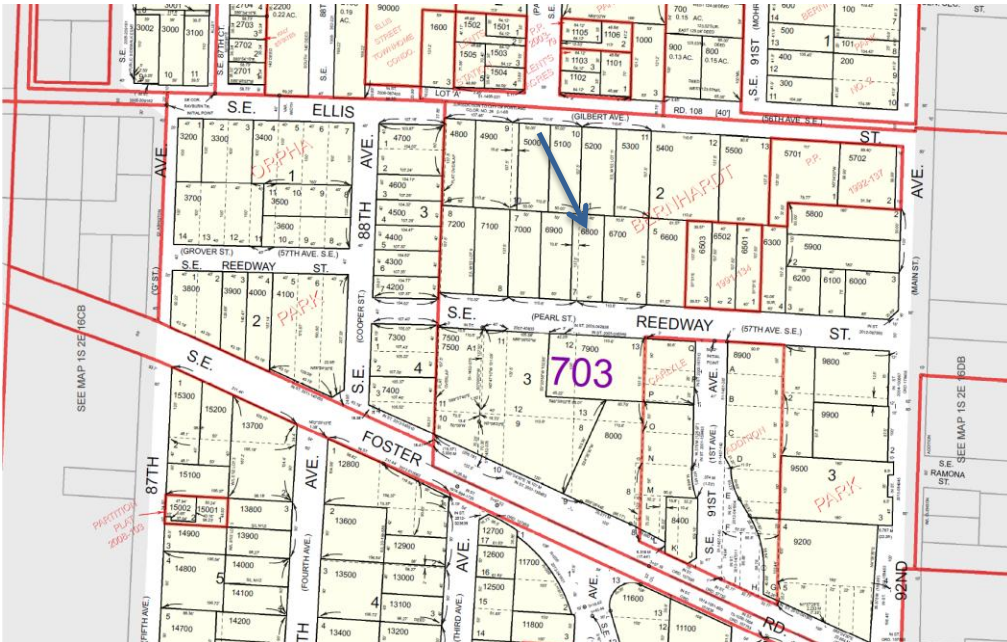


DISCLAIMER

All properties are sold “AS IS” Potential buyers should thoroughly investigate all aspects of a property prior to bidding. Multnomah County does not guarantee or warrant that any parcel is usable for any particular purpose.

Please be advised that County employees are not authorized to answer specific questions regarding the properties, including but not limited to: the size, the condition, the planning, zoning or building codes or regulations applicable thereto. Any statement by a County employee on these matters is not binding on the County; except and unless such a statement is made by a County Land Use Planning Division staff member in the context of a formal land use decision wherein the County is the land use planning jurisdiction with respect to the subject property

The information contained herein has been obtained through sources deemed reliable by Multnomah County but cannot be guaranteed for its accuracy. It is highly recommended buyer and interested parties independently verify any information.



multco.us/taxtitle

MULTNOMAH COUNTY TAX TITLE PUBLIC SALE MARCH 20, 2017



SE PORTLAND
RESIDENTIAL LAND (R5a)
PUBLIC SALE MARCH 20, 2017
9:00 am Registration | 10:00 am Sale
501 SE HAWTHORNE, PORTLAND, OR

3536 E/ SE 60TH AVE
Portland, OR 97206
Tax Account: R298474
Map Tax Lot: 1S2E07DA -01900
Lot Size: 0.11 Acres (5,000 SF)
Minimum Price: \$25,000
Earnest Money: \$5,000



Valuation expectations are as land. Property to be sold at the Public Sale to the highest and best bid that meets the minimum price with an optional Earnest Money Agreement-Inspection Waiver. There is no current access to this property. More information, including Public Sale List, Procedures, and Schedules: multco.us/taxtitle



N PORTLAND
MULTIFAMILY LAND (RHd)
PUBLIC SALE MARCH 20, 2017
9:00 am Registration | 10:00 am Sale
501 SE HAWTHORNE, PORTLAND, OR

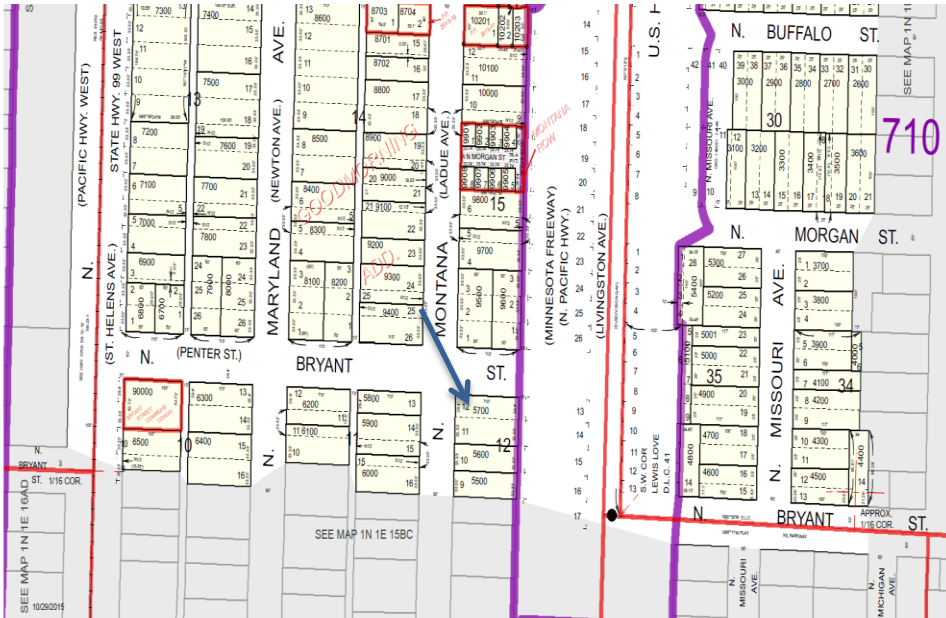
6968 N Montana Ave
Portland, OR 97217
Tax Account: R171867
Map Tax Lot: 1N1E15BB-05700
Lot Size: 0.16 Acres (6,901 SF)
Minimum Price: \$225,000
Earnest Money: \$45,000



Property may have mold, lead paint and other conditions which render the improvements NOT habitable and without economic potential. Valuation expectations are as redevelopment land. Property to be sold at the Public Sale to the highest and best bid that meets the minimum price with an optional Earnest Money Agreement-Inspection Waiver. Interior access prior to closing may require specialized environmental personnel with personal protective equipment. More information, including Public Sale List, Procedures, and Schedules: multco.us/taxtitle



MULTNOMAH COUNTY TAX TITLE PUBLIC SALE MARCH 20, 2017



SW PORTLAND
RESIDENTIAL LAND (R7)
PUBLIC SALE MARCH 20, 2017
9:00 am Registration | 10:00 am Sale
501 SE HAWTHORNE, PORTLAND, OR

SW FAIRHAVEN DR
Portland, OR 97221
Tax Account: R301021
Map Tax Lot: 1S1E06AC -03600
Lot Size: 0.16 Acres (7,100 SF)
Minimum Price: \$125,000
Earnest Money: \$25,000



Valuation expectations are as land. Property to be sold at the Public Sale to the highest and best bid that meets the minimum price with an optional Earnest Money Agreement Inspection Waiver. More information, including Public Sale List, Procedures, and Schedules: multco.us/taxtitle



MULTNOMAH COUNTY TAX TITLE PUBLIC SALE MARCH 20, 2017

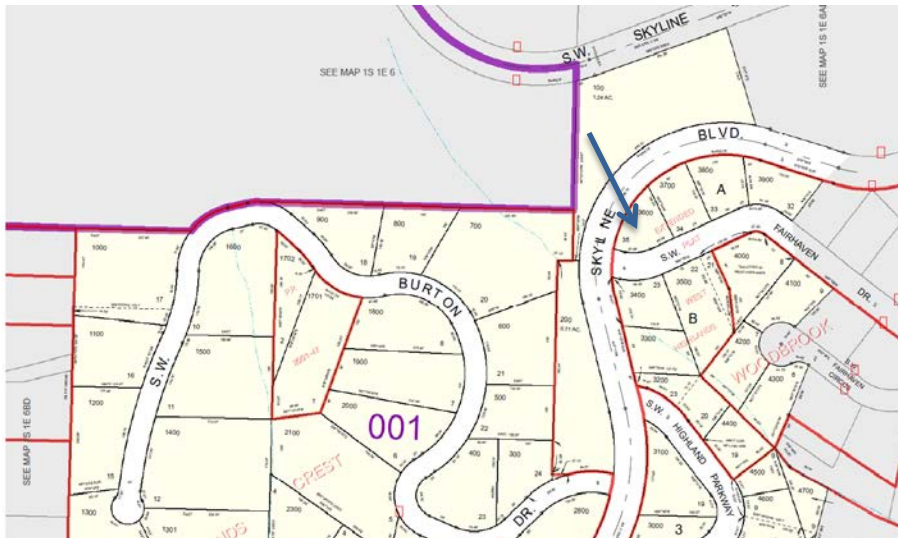
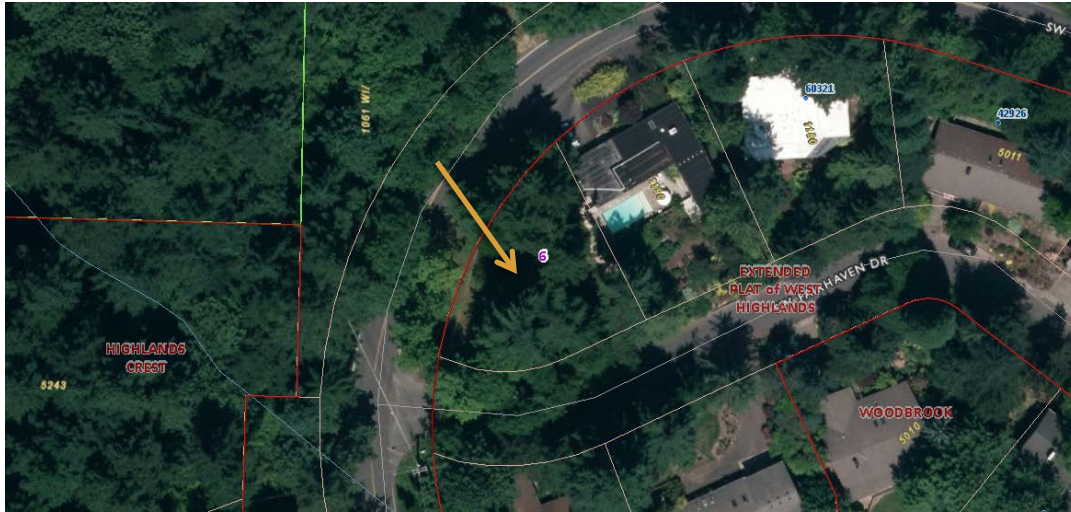
DISCLAIMER

All properties are sold "AS IS" Potential buyers should thoroughly investigate all aspects of a property prior to bidding. Multnomah County does not guarantee or warrant that any parcel is usable for any particular purpose.

Please be advised that County employees are not authorized to answer specific questions regarding the properties, including but not limited to: the size, the condition, the planning, zoning or building codes or regulations applicable thereto. Any statement by a County employee on these matters is not binding on the County; except and unless such a statement is made by a County Land Use Planning Division staff member in the context of a formal land use decision wherein the County is the land use planning jurisdiction with respect to the subject property

The information contained herein has been obtained through sources deemed reliable by Multnomah County but cannot be guaranteed for its accuracy. It is highly recommended buyer and interested parties independently verify any information.

multco.us/taxtitle



MULTNOMAH COUNTY TAX TITLE PUBLIC SALE MARCH 20, 2017

SE PORTLAND
RESIDENTIAL LAND (R5a)
PUBLIC SALE MARCH 20, 2017
9:00 am Registration | 10:00 am Sale
501 SE HAWTHORNE, PORTLAND, OR

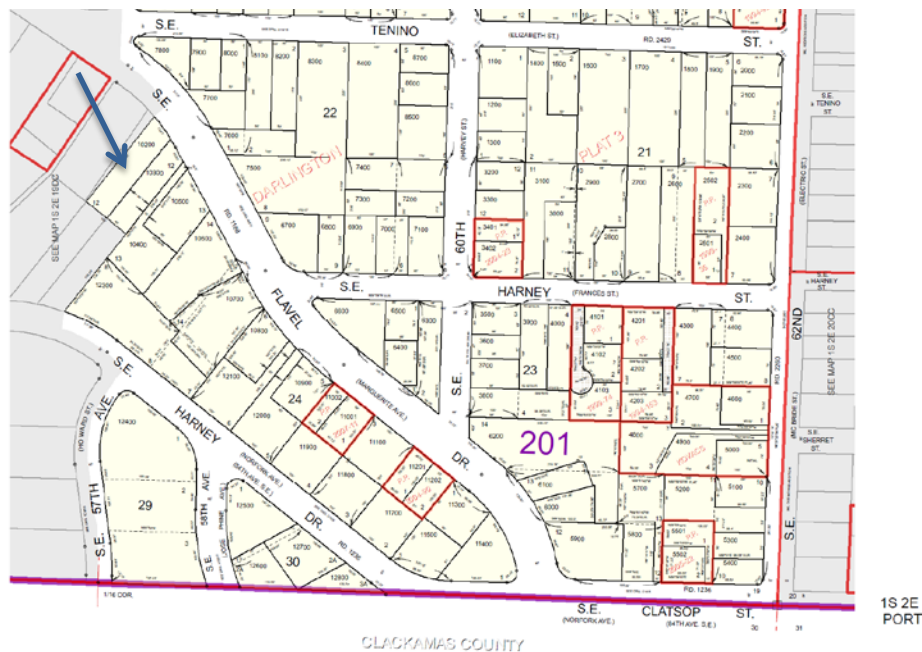
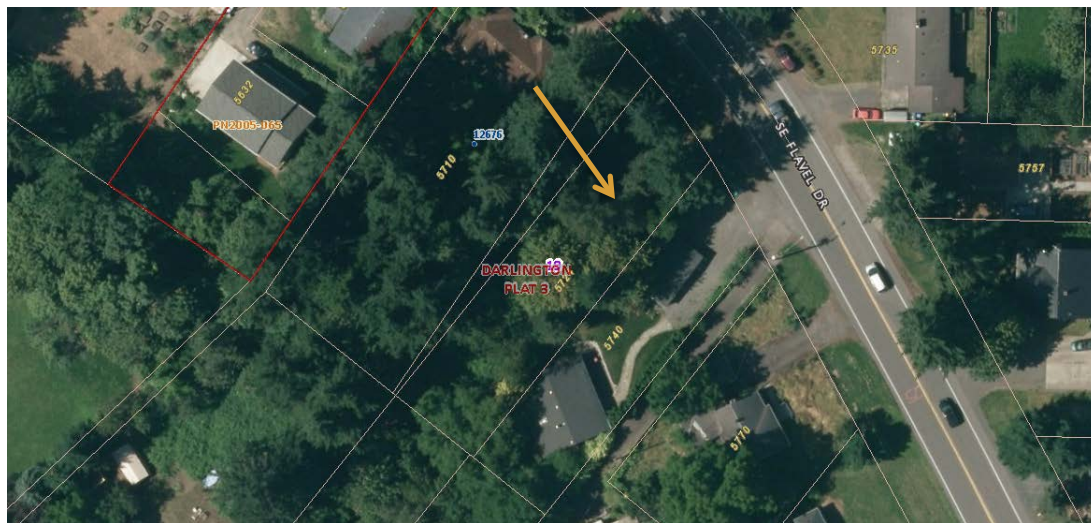
5724 SE Flavel Dr
Portland, OR 97206
Tax Account: R145064
Map Tax Lot: 1S2E19DD -10200
Lot Size: 0.25 Acres (10,920 SF)
Minimum Price: \$150,000
Earnest Money: \$30,000



Property may have mold, lead paint and other conditions which render the improvements NOT habitable and without economic potential. Valuation expectations are as redevelopment land. Property to be sold at the Public Sale to the highest and best bid that meets the minimum price with an optional Earnest Money Agreement-Inspection Waiver. Interior access prior to closing may require specialized environmental personnel with personal protective equipment. More information, including Public Sale List, Procedures, and Schedules: multco.us/taxtitle



MULTNOMAH COUNTY TAX TITLE PUBLIC SALE MARCH 20, 2017



DISCLAIMER

All properties are sold “AS IS” Potential buyers should thoroughly investigate all aspects of a property prior to bidding. Multnomah County does not guarantee or warrant that any parcel is usable for any particular purpose.

Please be advised that County employees are not authorized to answer specific questions regarding the properties, including but not limited to: the size, the condition, the planning, zoning or building codes or regulations applicable thereto. Any statement by a County employee on these matters is not binding on the County; except and unless such a statement is made by a County Land Use Planning Division staff member in the context of a formal land use decision wherein the County is the land use planning jurisdiction with respect to the subject property

The information contained herein has been obtained through sources deemed reliable by Multnomah County but cannot be guaranteed for its accuracy. It is highly recommended buyer and interested parties independently verify any information.

multco.us/taxtitle



MULTNOMAH COUNTY TAX TITLE PUBLIC SALE MARCH 20, 2017

NE PORTLAND
SINGLE FAMILY RESIDENCE (R7h)
PUBLIC SALE MARCH 20, 2017
9:00 am Registration | 10:00 am Sale
501 SE HAWTHORNE, PORTLAND, OR

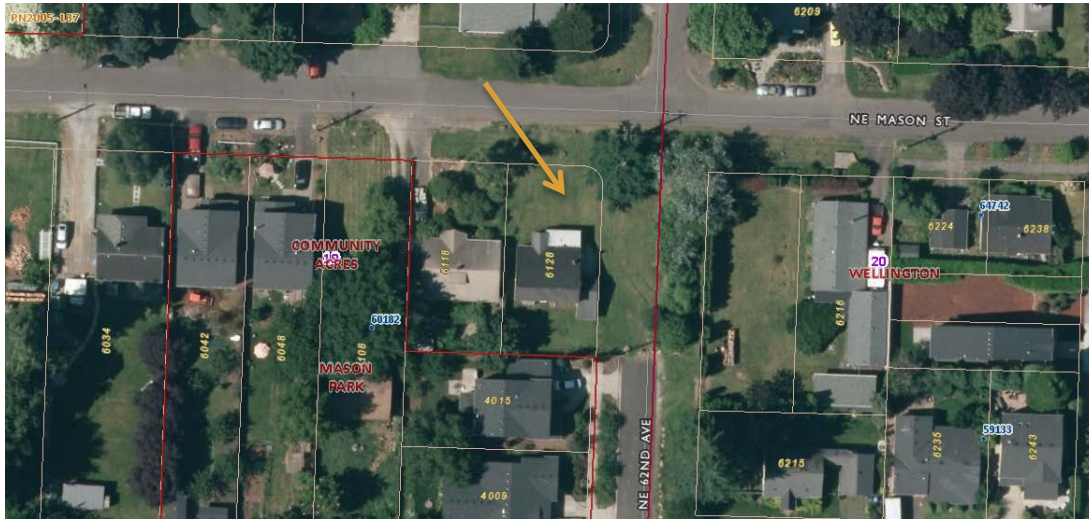
6128 NE MASON ST
Portland, OR 97218
Tax Account: R139147
Map Tax Lot: 1N2E19DA -05600
Lot Size: 0.11 Acres (5,000 SF)
Minimum Price: \$175,000
Earnest Money: \$35,000



Property to be sold at the Public Sale to the highest and best bid that meets the minimum price with an optional Earnest Money Agreement and Right to Lead-based Paint Inspection. Interior access prior to Public Sale at Open Houses to be announced. More information, including Public Sale List, Procedures, and Schedules: multco.us/taxtitle



MULTNOMAH COUNTY TAX TITLE PUBLIC SALE MARCH 20, 2017

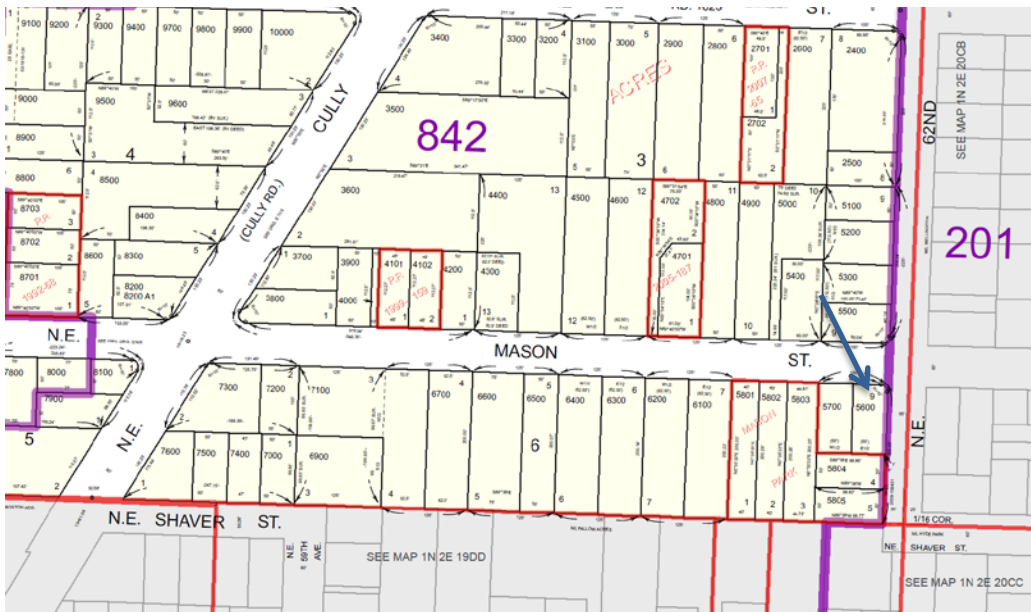


DISCLAIMER

All properties are sold “AS IS” Potential buyers should thoroughly investigate all aspects of a property prior to bidding. Multnomah County does not guarantee or warrant that any parcel is usable for any particular purpose.

Please be advised that County employees are not authorized to answer specific questions regarding the properties, including but not limited to: the size, the condition, the planning, zoning or building codes or regulations applicable thereto. Any statement by a County employee on these matters is not binding on the County; except and unless such a statement is made by a County Land Use Planning Division staff member in the context of a formal land use decision wherein the County is the land use planning jurisdiction with respect to the subject property

The information contained herein has been obtained through sources deemed reliable by Multnomah County but cannot be guaranteed for its accuracy. It is highly recommended buyer and interested parties independently verify any information.



multco.us/taxtitle

MULTNOMAH COUNTY TAX TITLE PUBLIC SALE MARCH 20, 2017

