

1

ESF 1 – Transportation

THIS PAGE LEFT BLANK INTENTIONALLY

Table of Contents

1	Introduction	1
1.1	Purpose and Scope.....	1
1.2	Relationship to Other ESF Annexes.....	1
1.3	Policies and Agreements	2
2	Situation and Assumptions	2
2.1	Situation	2
2.2	Assumptions	2
3	Roles and Responsibilities	2
3.1	Primary Agency.....	3
3.1.1	Department of Community Services	3
3.2	Supporting Agencies	3
3.2.1	Department of County Assets – Fleet Services	3
3.2.2	Sheriff’s Office	3
3.2.3	Emergency Management	3
3.3	Cooperating Agencies.....	4
3.3.1	Oregon Department of Transportation.....	4
3.3.2	Port of Portland.....	4
3.3.3	TriMet	4
3.3.4	Ride Connection	4
3.3.5	City Transportation Departments.....	4
4	Concept of Operations	5
4.1	General	5
4.2	Notifications	6
4.3	Actions by Phase of Emergency Management	6
4.3.1	Preparedness	6
4.3.2	Response	7
4.3.3	Recovery	7
4.3.4	Mitigation	7
4.4	Access and Functional Needs Populations	7
5	ESF Annex Development and Maintenance.....	8
6	Supporting Documents	8
7	Appendices	9

THIS PAGE LEFT BLANK INTENTIONALLY

ESF 1. Transportation

ESF 1 Tasked Agencies	
Primary Agencies	Department of Community Services (DCS)
Supporting Agencies	Department of County Assets (DCA) – Fleet Services Multnomah County Sheriff’s Office Multnomah County Emergency Management (MCEM)
Cooperating Agencies	Oregon Department of Transportation (ODOT) Port of Portland TriMet Ride Connection City Transportation Departments

1 Introduction

1.1 Purpose and Scope

Emergency Support Function (ESF) 1 coordinates governmental and nongovernmental organizations managing transportation systems, modes and infrastructure in response to threats or incidents.

This ESF identifies impacts to the transportation network; implements priorities for allocating transportation resources; processes transportation requests; manages traffic flow; repairs roads; establishes emergency routes; provides logistical transportation of evacuees, personnel, equipment, materials and supplies; and establishes procedures for coordinating emergency transportation management with neighboring jurisdictions and state agencies.

1.2 Relationship to Other ESF Annexes

ESF 1 often works closely with other County ESFs as a part of coordinated response and recovery activities. The following ESFs support transportation-related activities:

- **ESF 3 – Public Works and Engineering.** Supports in assessment and restoration of the transportation network including debris clearance.
- **ESF 7 – Resource Support.** Provides support by helping secure personnel, equipment, and supplies to execute response operations.
- **ESF 16 – Law Enforcement.** Coordinates evacuation operations, provides situation updates, scene security, and directs traffic flow.

1.3 Policies and Agreements

The following policies and agreements are currently in place to guide and support transportation activities during an emergency:

- Portland Metropolitan Area Transportation (PMAT) Co-Operative Intergovernmental Agreement for Equipment and Services
- Memorandum of Understanding – Emergency Transportation Routes.

2 Situation and Assumptions

2.1 Situation

- A significant emergency or disaster may severely damage transportation infrastructure.
- The movement of people, equipment, and supplies may be much less efficient in emergency conditions than under normal circumstances.
- Many localized transportation activities may be disrupted or hindered by damaged surface transportation infrastructure.

2.2 Assumptions

- The local transportation infrastructure will likely sustain damage during an emergency. The damage, depending upon the integrity of the transportation network, will determine the effectiveness and efficiency of response and recovery.
- Operations may require traffic control to divert traffic around damaged, isolated, or evacuated areas.
- The immediate use of transportation systems for emergency operational activities may exceed local capabilities, thus requiring assistance from neighboring jurisdictions and/or State and Federal government.
- Rapid damage assessments of impacted areas will assist in the determination of response priorities and transportation demands.

3 Roles and Responsibilities

The roles and responsibilities for each department in support of emergency services will vary depending on the type of resource, the length of the warning period, and the duration of the incident.

ESF 1. Transportation**3.1 Primary Agency**

The primary agency for each ESF is assigned based upon the agency's coordinating responsibilities, authorities, functional expertise, resources, and capabilities in managing incident activities. The primary agency may not be responsible for all elements of a function and will work with supporting and cooperating agencies to ensure a coordinated response. The primary agency for ESF 1 is DCS.

3.1.1 Department of Community Services**3.1.1.1 Transportation Division**

- Conduct damage assessment for County roads and bridges.
- Coordinate repair and restoration of County roads and bridges.
- Assist in planning for other emergency transportation needs.
- Plan, coordinate, and conduct traffic control and other emergency transportation operations for county roads and bridges

3.2 Supporting Agencies

Supporting agencies for each ESF are those County entities that have substantial support roles during major incidents. Supporting agencies that support ESF 1 include:

3.2.1 Department of County Assets – Fleet Services

- Provide staff and resource support for transportation operations.
- Maintain and repair County vehicles for use to support emergency operations

3.2.2 Sheriff's Office

- Conduct traffic control for emergency transportation routes.
- Provide situational information for road conditions to the Transportation Division.
- Support assessment of critical transportation over marine channels.
- Provide traffic and crowd control, security to critical facilities and supplies, and control access to hazardous or evacuated areas.

3.2.3 Emergency Management

- Implement fuel allocation plan.

ESF 1. Transportation

- Assist in transportation planning efforts.
- Coordinate requests for assistance with other counties and the state.

3.3 Cooperating Agencies

The County is supported by a variety of Cooperating Agencies that provide support through coordination of emergency functions within their own authority/jurisdiction, or are able to provide additional resources to support County response activities. Cooperating Agencies that support ESF 1 include:

3.3.1 Oregon Department of Transportation

- Maintain transportation infrastructure, manages emergency transportation routes, identifies roads hazards, and implements road closures.

3.3.2 Port of Portland

- Conduct damage assessment for Port transportation infrastructure.
- Coordinate repair and restoration of Port transportation infrastructure.

3.3.3 TriMet

- Coordinate damage assessment of public transportation infrastructure.
- Coordinate repair and restoration of public transit services after an emergency.
- Provide transportation support for impacted populations

3.3.4 Ride Connection

- Provide transportation support for impacted populations

3.3.5 City Transportation Departments

- Conduct damage assessment for City transportation infrastructure.
- Coordinate repair and restoration of City transportation infrastructure.

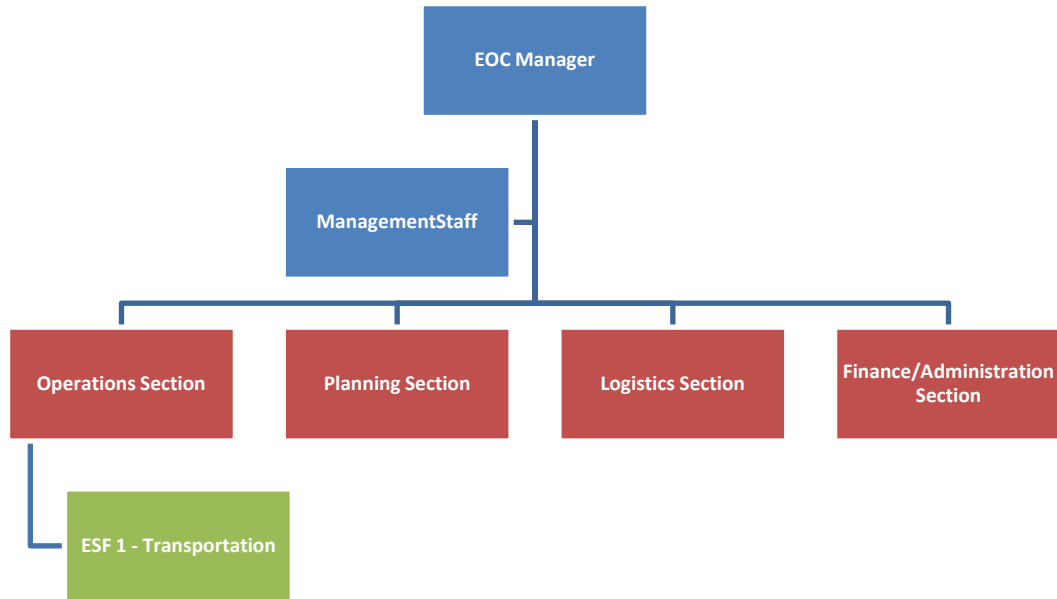
4 Concept of Operations

4.1 General

- In accordance with the Basic Plan and this ESF annex, DCS is the primary agency responsible for coordinating transportation activities. SOPs developed by the primary agency and supporting agencies provide the framework for carrying out those activities.
- Requests for assistance will be generated one of two ways: they will be forwarded to the County EOC, or they will be issued in accordance with established mutual aid agreements.
- The County EOC Operations Section Chief, with input from identified primary and supporting agencies, will provide guidance for the coordination of transportation resources and the identification of emergency transportation routes for the movement of people, equipment, and materials.
- If the incident requires additional support for transportation operations, the Operations Section Chief may activate ESF 1.
- Law enforcement agencies coordinate evacuation and movement during emergencies and disasters. For more information, see ESF Annex 16 – Law Enforcement.

Table 1 Multnomah County ESF 1 Organization

ESF 1. Transportation



4.2 Notifications

- The Duty Officer will notify DCS and supporting agencies of EOC activations and request that representatives report to the EOC to coordinate transportation activities and staff ESF 1 if activated.
- As additional EOC staffing needs become apparent, other support and partnering agency personnel may be asked to report to the EOC to assist with transportation activities.

4.3 Actions by Phase of Emergency Management

4.3.1 Preparedness

- Develop and maintain standard operating procedures (SOPs) dealing with transportation response.
- Maintain current inventories of government transportation and fuel resources available and make this inventory available to the Emergency Manager.
- Maintain current resource directories of all commercial and industrial transportation assets, facilities, and supplies, including points of contact and their locations, territories, and operating areas.
- Establish and maintain liaison with State and adjacent county transportation officials.

ESF 1. Transportation

- Estimate logistical requirements (e.g., personnel, supplies and equipment, facilities, and communications) during the planning process and through exercises designed to test transportation operations.
- Participate in exercises and training to validate this ESF annex and supporting SOPs.
- Ensure that all transportation personnel are trained in their responsibilities according to departmental SOPs.

4.3.2 Response

- Identify transportation needs required by the situation.
- Identify, obtain, prioritize, and allocate available transportation resources.
- Assess damage to transportation infrastructure and communicate this information to the Emergency Operations Center (EOC).
- Plan for transportation support for mobilization sites, staging areas, and distribution points.

4.3.3 Recovery

- Continue to render transportation support when and where required as long as emergency conditions exist.
- Prioritize the repair and restoration of transportation infrastructure so that essential services such as fire, emergency medical services, law enforcement, and waste management will be given first priority.
- All agencies involved in the recovery effort will keep detailed records of expenses in case there is potential for Federal and State reimbursement assistance.

4.3.4 Mitigation

- Regularly inspect local streets, public roadways, and rights-of-way for deterioration and make necessary repairs to keep them in good condition.
- Keep equipment in operating condition.

4.4 Access and Functional Needs Populations

During mass evacuations, the County will work with public, private and non-profit organizations to provide transport for persons, including

ESF 1. Transportation

individuals with access and functional needs, by considering the following criteria:

- Evacuees can be accommodated at both embarkation points and at destination general population shelters.
- Evacuees can travel on commercial long-haul buses, aircraft, passenger trains, or lift-equipped buses.
- Evacuees do not have medical needs indicating that they should be transported by specialized medical transport.

5 ESF Annex Development and Maintenance

DCS will be responsible for coordinating regular review and maintenance of this ESF Annex. Each primary and supporting agency will be responsible for developing plans and procedures that address assigned tasks.

6 Supporting Documents

The following documents are currently in place:

Multnomah County

- DCS Road and Bridge Incident Response Inspection Plan

State of Oregon

- State of Oregon Emergency Operations Plan
 - ESF 1 – Transportation
- State of Oregon Recovery Plan
 - State Recovery Function 6 – Infrastructure Services
- Oregon Department of Transportation Emergency Operations Plan

Federal

- National Response Framework
 - ESF 1 – Transportation
- National Disaster Recovery Framework
 - Recovery Support Function – Infrastructure Services
- National Infrastructure Protection Plan

- Transportation Systems Sector-Specific Plan

7 Appendices

- I-84 Closure Plan