

12

ESF 12 – Energy

THIS PAGE LEFT BLANK INTENTIONALLY

Table of Contents

1	Introduction	1
1.1	Purpose and Scope.....	1
1.2	Relationship to Other ESF Annexes.....	1
1.3	Policies and Agreements	1
2	Situation and Assumptions	2
2.1	Situation	2
2.2	Assumptions	2
3	Roles and Responsibilities	3
3.1	Primary Agency.....	3
3.1.1	Department of County Assets – Facilities and Property Management Division	3
3.2	Supporting Agencies.....	3
3.2.1	Office of Emergency Management	3
3.3	Cooperating Agencies.....	4
3.3.1	Energy Sector.....	4
4	Concept of Operations	4
4.1	General	4
4.2	Notifications	5
4.3	Actions by Phase of Emergency Management	5
4.3.1	Preparedness	5
4.3.2	Response	6
4.3.3	Recovery	6
4.3.4	Mitigation	6
4.4	Access and Functional Needs Populations	7
5	ESF Annex Development and Maintenance.....	7
6	Supporting Documents	7
7	Appendices	7

THIS PAGE LEFT BLANK INTENTIONALLY

ESF 12 Tasked Agencies	
Primary Agencies	Department of County Assets
Supporting Agencies	Multnomah County Emergency Management
Community Partners	Energy Sector

1 Introduction

1.1 Purpose and Scope

Emergency Support Function (ESF) 12 collects, evaluates, and shares information on energy system damage and provides estimations on the effect of energy system outages within the affected area as well as coordinates governmental and non-governmental efforts to establish temporary emergency energy production and transmission capabilities to support critical lifelines and facilities until permanent restoration is accomplished. Critical lifelines may include transportation, water, sewer, telephone, internet and other essential community services. Critical facilities may include primary and alternate emergency coordination centers, hospitals/critical care facilities, designated shelters, agency operating centers (if applicable) and government offices/facilities.

1.2 Relationship to Other ESF Annexes

ESF 12 often works closely with other County ESFs as a part of coordinated response and recovery activities. The following ESFs support Energy activities:

ESF 1 – Transportation. Facilitate utility work access and fleet movement.

ESF 3 – Public Works. Performs debris clearance and removal operations in support of restoration of energy infrastructure.

ESF 18 – Business and Industry. Provides support in coordinating with private utilities.

1.3 Policies and Agreements

The following policies and agreements are currently in place to guide and support energy activities during an emergency:

- None at this time.

2 Situation and Assumptions

2.1 Situation

Emergencies, both natural and human-caused, can have profound effects on public and privately owned utilities in the County. The ability to quickly restore damaged water, power, natural gas, telecommunication, and sewer systems is essential to minimizing a disaster's impacts on the safety, health, and economy of the area.

- The electrical power industry is organized into a network of public and private generation and distribution facilities. Through such networks, the electrical power industry has developed a capability to provide, reroute, and restore power under even the most extreme circumstances.
- A major disaster could destroy or disrupt all or a portion of the County's energy and utility systems.
- Multnomah County is host to Oregon's critical energy infrastructure (CEI) hub on the Willamette River.

2.2 Assumptions

- A major disaster could destroy or damage portions of the County's energy systems and disrupt petroleum supplies.
- Widespread and possibly prolonged electric power failures could occur in a major disaster.
- The transportation, media, and telecommunications infrastructures will be affected.
- Delays in the production, refining, and delivery of petroleum-based products may occur as a result of transportation infrastructure problems and loss of commercial power.
- There may be extensive distribution failure in water, wastewater, and gas utilities. These may take hours, days, weeks, or even months to repair.
- There may be panic hoarding of fuel in areas served by severed pipelines or by individuals from neighboring jurisdictions where shortages have occurred.
- Natural gas lines may break, causing fire, danger of explosion, or health hazards such as inhalation to toxic substances.

- City and County Public Works departments, under an emergency proclamation, will require the authority to enter private property to evaluate and shut off utilities that jeopardize public and private property or threaten public health, safety, or the environment.

3 Roles and Responsibilities

3.1 Primary Agency

The primary agency for each ESF is assigned based upon the agencies coordinating responsibilities, authorities, functional expertise, resources, and capabilities in managing incident activities. The primary agency may not be responsible for all elements of a function and will work with supporting agencies and community partners to ensure a coordinated response. The primary agency for ESF 12 is the Department of County Assets.

3.1.1 Department of County Assets – Facilities and Property Management Division

- Ensure appropriate backup power sources and fuel supplies are available to support County emergency operations.
- Establish liaison with all energy providers and coordinate flow of information.

3.2 Supporting Agencies

Supporting agencies for each ESF are those County entities that have substantial support roles during major incidents. Supporting agencies that support ESF 12 include:

3.2.1 Office of Emergency Management

- Coordinate with area utility providers to ensure coordinated restoration of lifeline utilities.
- Monitor the status of lifeline utilities and provide situation status updates to the County PIO to inform public messaging.
- Develop, maintain and implement the fuel allocation plan.
- Oversees and activates the County Emergency Operations Center (EOC)
- Ensure 24 hour Duty Officer readiness to employ emergency alert systems and initiate notifications to critical partners.

3.3 Cooperating Agencies

The County is supported by a variety of cooperating agencies that provide support through coordination of emergency functions within their own authority/jurisdiction, or are able to provide additional resources to support County response activities. Cooperating agencies that support ESF 3 include:

3.3.1 Energy Sector

Coordinate response activities with local public works agencies regarding restoration of services.

Implement emergency actions to protect the community from cascading energy hazards.

Make repairs and restore services as soon as possible.

Support emergency provision of auxiliary power to critical services.

Provide updates on status and forecasts to the EOC.

Support the identification of critical services and facilities within each service area.

4 Concept of Operations

4.1 General

In accordance with the County EOP and this ESF Annex, the Department of County Assets is the primary agency responsible for coordinating energy and utility activities. Plans and procedures developed by the primary and supporting agencies provide the framework for carrying out those activities.

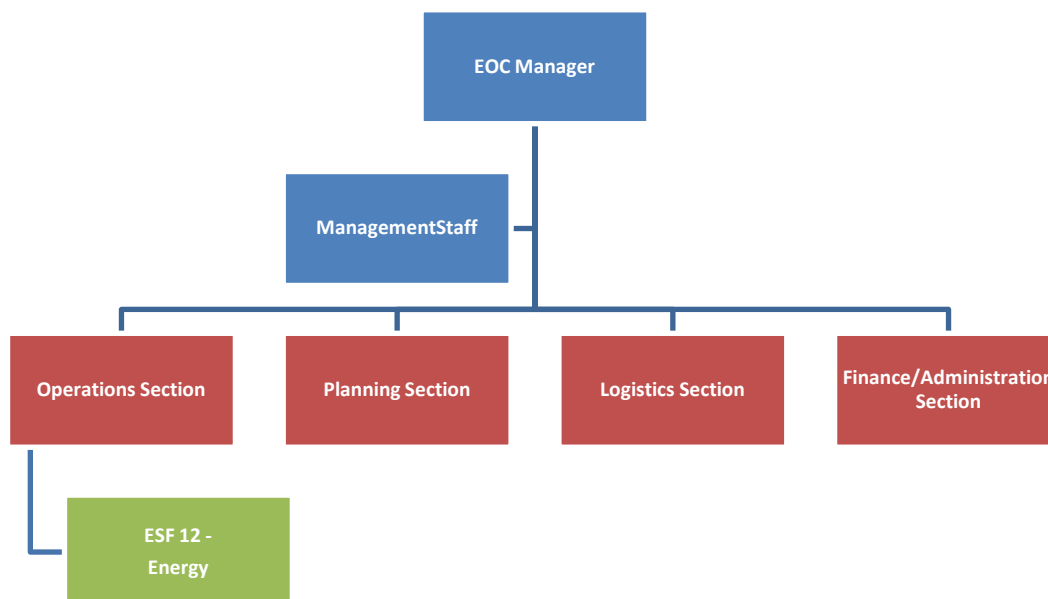
Requests for assistance with energy and utility resources will be generated one of two ways: they will be forwarded to the County EOC, or they will be made in accordance with established mutual aid agreements.

The County EOC Operations Section Chief, with input from identified primary and supporting agencies, will provide guidance for the coordination of energy resources.

If the incident requires additional support for energy operations, the Operations Section Chief may activate ESF 12.

Energy and utility support requirements that cannot be met at the local level should be forwarded to the State for assistance. If needed, Federal assistance may be requested by the Governor.

Table 1 Multnomah County ESF 12 Organization



4.2 Notifications

- The Duty Officer will notify the appropriate private sector utility liaisons and supporting agencies of EOC activations and request that representatives report to the EOC to coordinate energy sector activities and staff the ESF 12 Branch if activated.
- As additional EOC staffing needs become apparent, other support and partnering agency personnel may be asked to report to the EOC to assist with energy sector activities.

4.3 Actions by Phase of Emergency Management

4.3.1 Preparedness

- Ensure the availability of necessary equipment to support energy repair and restoration activities.
- Coordinate the establishment of priorities to repair damaged energy services and the provision of temporary, alternate, or interim sources of portable generators and other utilities.
- Promote mutual assistance agreements with the vendors of all utility services.
- Develop and maintain alert rosters, plans, policies, and procedures necessary to support the implementation of this annex.

ESF 12. Energy

- Identify, train, and assign personnel to execute missions in support of restoration of energy systems.
- Participate in an exercise at least annually to validate this annex and supporting annexes.

4.3.2 Response

- Assess the affected areas to determine operational priorities and emergency repair procedures with utility field personnel.
- Prioritize utility rebuilding processes if necessary to restore utilities in the affected areas.
- Administer statutory authorities for utility priorities, as needed.
- Apply local, State, and Federal resources as necessary, in accordance with established priorities to restore utility services.
- Provide emergency information, education, and conservation guidance to the public in coordination with the Public Information Officer (PIO).
- Assist local, State, and Federal agencies and departments with obtaining fuel for transportation in support of emergency operations.
- Coordinate with the Sheriff's Office for security and protection of supplies.

4.3.3 Recovery

- Continue all activities in coordination with the EOC, based on the requirements of the incident.
- Support restoration activities.
- Replenish supplies and repair damaged equipment.
- Participate in after-action briefings and develop after-action reports (AARs).
- Make necessary changes to this ESF Annex and supporting plans and procedures.

4.3.4 Mitigation

- Based on known hazards, identify and correct vulnerabilities in the county's energy sector.

ESF 12. Energy

- When repairing damages, every attempt should be made to reduce the likelihood and severity of future damages.
- Implement a public awareness campaign regarding energy and utilities safety in emergencies.
- Develop internal Continuation of Operations Plans and organizational resilience strategies to ensure readiness to respond and recover from an emergency or disaster event.

4.4 Access and Functional Needs Populations

The protection of the community's energy sector and provision of emergency power services will take into account populations with access and functional needs.

5 ESF Annex Development and Maintenance

The Department of County Assets will be responsible for coordinating regular review and maintenance of this ESF Annex. Each primary and supporting agency will be responsible for developing plans and procedures that address assigned tasks.

6 Supporting Documents

The following documents are currently in place:

Multnomah County

- None at this time.

State of Oregon

- State of Oregon Emergency Operations Plan
 - ESF 12 – Energy
- Oregon Energy Assurance Plan

Federal

- National Response Framework
 - ESF 12 - Energy

7 Appendices

None at this time.

THIS PAGE LEFT BLANK INTENTIONALLY