

13

ESF 13 – Military Support

THIS PAGE LEFT BLANK INTENTIONALLY

Table of Contents

1	Introduction	1
1.1	Purpose and Scope.....	1
1.2	Support to other ESF Annexes.....	2
1.3	Policies and Agreements	2
2	Situation and Assumptions	3
2.1	Situation	3
2.2	Assumptions	3
3	Roles and Responsibilities	4
3.1	Primary Agency.....	4
3.2	Supporting Agencies	4
3.3	Cooperating Agencies.....	4
3.3.1	Oregon Military Department/Oregon National Guard.....	5
4	Concept of Operations	5
4.1	General	5
4.2	Notifications	6
4.3	Actions by Phase of Emergency Management	6
4.3.1	Preparedness	6
4.3.2	Response	7
4.3.3	Recovery	8
4.3.4	Mitigation	8
4.4	Access and Functional Needs Populations	8
5	ESF Annex Development and Maintenance.....	8
6	Supporting Documents	8
7	Appendices	9

THIS PAGE LEFT BLANK INTENTIONALLY

ESF 13 Tasked Agencies	
Primary Agencies	Multnomah County Emergency Management
Supporting Agencies	Multnomah County Sheriff's Office (MCSO)
Cooperating Agencies	Oregon Military Department/Oregon National Guard

1 Introduction

1.1 Purpose and Scope

Emergency Support Function (ESF) 13 establishes a coordination point between local government and military support capabilities made available through State.

Military support generally consists of resources available through the Oregon Military Department (OMD.) More specifically, military support within the State of Oregon relies upon assets of the Oregon National Guard (ORNG.)

The ORNG provides 11 essential capabilities in support of a range of natural and manmade disasters. The County ESF 13 Coordinator may request support when the capability does not exist locally or when the required capability exceeds the capacity of local or regional partners to fulfill.

- Aviation/Airlift
- Command and Control
- Chemical, Biological, Radiological, Nuclear, and High Yield Explosives (CBRNE) response
- Engineering
- Medical
- Communications
- Transportation
- Security
- Logistics
- Maintenance
- Cyber

ESF 13. Military Support

When the needed resources exceed the capability or capacity of the ORNG, the County ESF 13 Coordinator will coordinate through the State EOC for Federal military support.

1.2 Support to other ESF Annexes

Due to the broad scope of capabilities available through military support in a major emergency or disaster, ESF 13 may work across the spectrum of other County ESFs as a part of coordinated response and recovery activities. ESF 13 may be requested to support other functional areas including:

- **ESF 1 – Transportation.** Rotary wing lift (helicopters ;) maritime navigation and shipping.
- **ESF 2 – Communications.** Communications support to first responders.
- **ESF F 3 – Public Works.** Emergency route clearance; emergency power.
- **ESF F 4 – Firefighting.** Provide firefighting support including but not limited to aerial surveillance of a disaster area.
- **ESF 5 – Information and Planning.** Aerial imagery.
- **ESF 6 – Mass Care and Sheltering.** Shelter support/management.
- **ESF 7 – Resource Support.** Fuel Points of Distribution – vehicles; water purification and distribution – Reverse Osmosis Water Purification Units (ROWPU.)
- **ESF 8 – Health and Medical.** Rotary wing medical evacuation; mortuary affairs assistance; medical augmentation.
- **ESF 9 – Search and Rescue.** Rotary wing lift. Assist with search and rescue and lifesaving air ambulance missions.
- **ESF 10 – Hazardous Materials.** HAZMAT and CBRNE.
- **ESF 14 – Public Information.** Public affairs broadcast transmission support.

1.3 Policies and Agreements

The following policies and agreements guide and support execution:

- Department of Defense Directive 3025.18 - Defense Support to Civil Authorities (DSCA)

- Title 10, U.S. Code - ARMED FORCES
- Title 14, U.S. Code - COAST GUARD
- Title 32, U.S. Code - NATIONAL GUARD

2 Situation and Assumptions

2.1 Situation

Refer to Chapter 2, Multnomah County Emergency Operations Basic Plan, for a Community Profile; Natural, Technological, and Social Hazards; Hazard Profiles, and Hazard Analysis. Consider these additional factors when planning for or responding to an emergency.

- Incident Response begins with first responders at the local level.
- The military serves a secondary role in supporting disasters.
- Civilian authorities are in charge of emergency response and recovery; military forces support them.
- In Oregon, the Office of Emergency Management (OEM) is part of the OMD.
- DSCA requires a Presidential Declaration of a major disaster or emergency.
- Except in situations expressly authorized by an Act of Congress, the Posse Comitatus Act and Department of Defense Directive (DoDD) 5525.5 prohibit the use of active duty armed forces as enforcement officials to execute State or Federal law or to perform direct law enforcement functions.
- The Coast Guard is exempt from Posse Comitatus restrictions under Title 14, U.S. Code and may assist in law enforcement functions.
- National Guard forces operating under the state authority of Title 32, i.e. State vice Federal authority, are exempt from Posse Comitatus Act restrictions.

2.2 Assumptions

- Major emergencies and disasters will require assistance from regional and state response organizations, including the ORNG.
- The Governor, through the OMD, will make the ORNG available to support emergency response and recovery operations.

ESF 13. Military Support

- If an emergency escalates to the Federal level, Department of Defense (DoD) forces may support civilian response and recovery efforts.
- The Governor will issue an Executive Order prior to the occurrence of a major disaster whenever possible, authorizing the Adjutant General to call ORNG personnel and equipment to Active Duty status in preparation for response and recovery operations.

3 Roles and Responsibilities

The Multnomah County Office of Emergency Management (MCEM,) as the ESF 13 Primary Agency, assumes responsibility for developing and maintaining relationships with military support agencies and community partners.

3.1 Primary Agency

In addition to the general responsibilities described above, ESF 13 assumes responsibility for the following tasks:

- Facilitate establishment of liaison to the Oregon OEM and ORNG.
- Coordinate the regular review and update of the ESF 13 Annex with partner agencies.
- During emergency response and recovery, provide leadership in coordinating and integrating military support to overall County efforts to affected areas and populations.
- Provide information and status from the ESF 13 desk regarding military support being provided to the County during emergency response and recovery.
- Coordinate all ESF 13 partner agency activities and information for EOC briefings and Incident Action Plan development.

3.2 Supporting Agencies

- Provide assistance to ESF 13 requests with services, staff, equipment, and supplies that complement the emergency response and recovery effort in support of the County.

3.3 Cooperating Agencies

- The County receives military support via the state Office of Emergency Management.

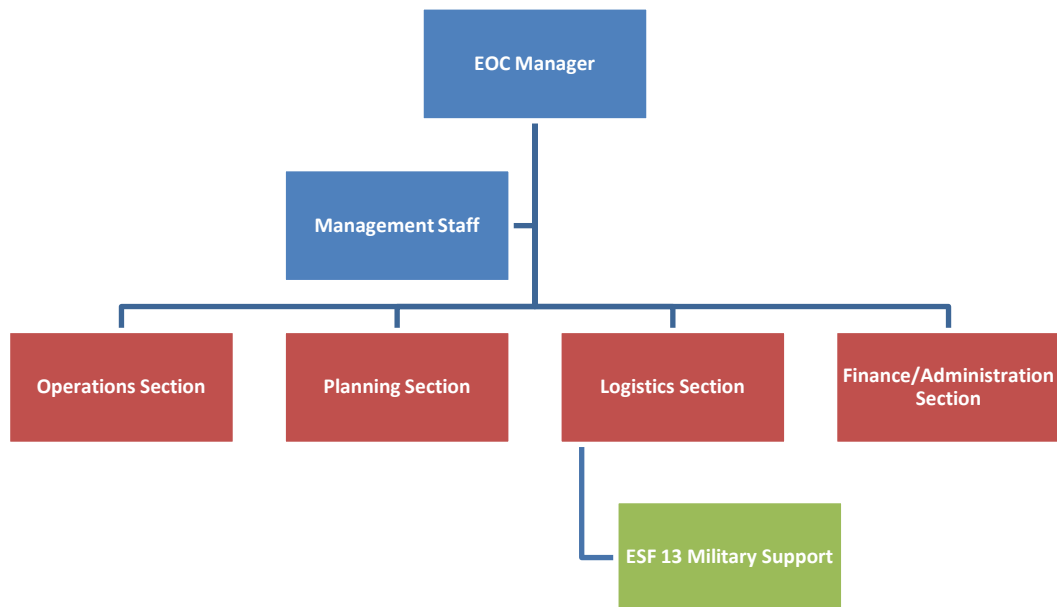
3.3.1 Oregon Military Department/Oregon National Guard

4 Concept of Operations

4.1 General

- In a major emergency or disaster, the Governor may activate the ORNG to provide assistance to local communities.
- Requests for ORNG capabilities from within the County EOC will be coordinated by ESF 13 and forwarded through the Logistics Section.
- ESF 13 will work with support agency counterparts to seek and procure, plan, coordinate and direct the use of any required assets.
- Throughout response and recovery, ESF 13 will evaluate requests for humanitarian aid and security requests; will develop and update assessments of the military support situation and assist with contingency planning in the impacted area.
- When an event requires a specific capability, ESF 13 will coordinate support for the EOC by an appropriate Subject Matter Expert(s) who will advise and/or direct operations within the context of the Incident Command System structure.

Table 1 Multnomah County ESF 13 Organization



4.2 Notifications

- The Duty Officer will notify MCEM of EOC activations and request that the ESF 13 Coordinator report to the EOC to organize military support activities and staff the ESF 13 Branch.
- The ESF 13 Coordinator will implement procedures to notify Oregon Military Department staff if the following deployment criteria are met:
 1. State ECC approval must be granted prior to any local jurisdiction employing ORNG assets. EXCEPTION: Immediate aids to save life, prevent human suffering, and mitigate great property damage.
 2. The situation is beyond the capability of local authorities and formal assistance has been requested through the declaration process.
 3. Requested resources are not available from commercial sources and are deployed to supplement, not replace, local efforts.
 4. Assistance is limited to those tasks that the ORNG can accomplish more effectively or efficiently than another State agency.
- As additional EOC staffing needs become apparent, other support agency personnel may be asked to report to the EOC to assist with military activities.

4.3 Actions by Phase of Emergency Management

4.3.1 Preparedness

- Address planning issues on an ongoing basis to identify potential staging areas; critical facilities; helicopter landing zones; air delivery drop zones, and other areas that will facilitate the delivery of military support.
- Coordinate planning with ESF 13 support agencies, and other emergency support function areas that may request military support during emergency response and recovery operations.
- Prepare and maintain standard operating procedures (SOPs) dealing with military support.
- Maintain resource directories of military support capabilities, assets, and unit locations, including points of contact.

ESF 13. Military Support

- Present training for ESF 13 personnel and other members of the Multnomah County EOC regarding the military support.
- Establish and maintain liaison with supporting and cooperating agencies.
- Coordinate with the Multnomah County Sheriff's Office for participation in the Federal/State Surplus Property Program to obtain equipment and supplies useful in responding to emergencies and disasters.
 - Coordinate with other County departments and offices in order to support their emergency response equipment and supply requirements.
- Develop cadre of personnel from internal and external sources qualified to operate within the EOC or to support other emergency and disaster responses.
- Participate in exercises and training to validate this ESF Annex and supporting SOPs.

4.3.2 Response

- Coordinate operations within the ESF 13 Branch in the County EOC, or at other locations if required.
- Identify, obtain, prioritize, and allocate available Military Support resources.
 - Initiate contact with the ORNG via the Oregon Emergency Response System, 1-800-452-0311.
- Request the pre-positioning of resources when it is apparent that military support will be necessary for response operations.
- Monitor military support resources and response activities.
- Participate in EOC briefings, Incident Actions Plans, Situation Reports, and meetings, as required.
- Coordinate with support agencies, as needed, to support emergency response activities.
- Obtain ORNG and other military resources through the Logistics Section; assist in the coordination of resources into impacted areas from designated staging areas.

4.3.3 Recovery

- In consultation with the requesting ESF or EOC Section, coordinate additional military resources in support of recovery operations.
- All agencies involved in the recovery effort will keep detailed records of expenses in case there is potential for Federal and State reimbursement assistance.

4.3.4 Mitigation

- Coordinate with ORNG and other supporting agencies to participate in activities to reduce or minimize the impact of future disasters.
- Identify potential mitigation activities that complement the work of community partners and coordinate associated projects.

4.4 Access and Functional Needs Populations

During emergency and disaster response, particular attention will be given to individuals with access and functional needs.

- During coordination meetings with supporting and cooperating agencies, the ESF 13 Coordinator will educate partners on the obligations responder have to address the special needs of individuals with access and functional needs.
- Arrange for specific training in emergency response for individuals with access and functional or other special needs.

5 ESF Annex Development and Maintenance

MCEM will be responsible for coordinating regular review and maintenance of this ESF Annex. Primary and supporting agency will be responsible for developing plans and procedures that address assigned tasks.

6 Supporting Documents

The following documents are currently in place:

Multnomah County

- None at this time.

State of Oregon

- State of Oregon Emergency Operations Plan
 - ESF 13 – Military Support

Federal

- National Response Framework
 - ESF 13 – Transportation
- National Disaster Recovery Framework
 - Recovery Support Function – Infrastructure Services
- National Infrastructure Protection Plan
 - Transportation Systems Sector-Specific Plan

7 Appendices

Appendix A - Oregon National Guard Domestic Capabilities Brief

Appendix B – Oregon National Guard Domestic Operations Force Packages