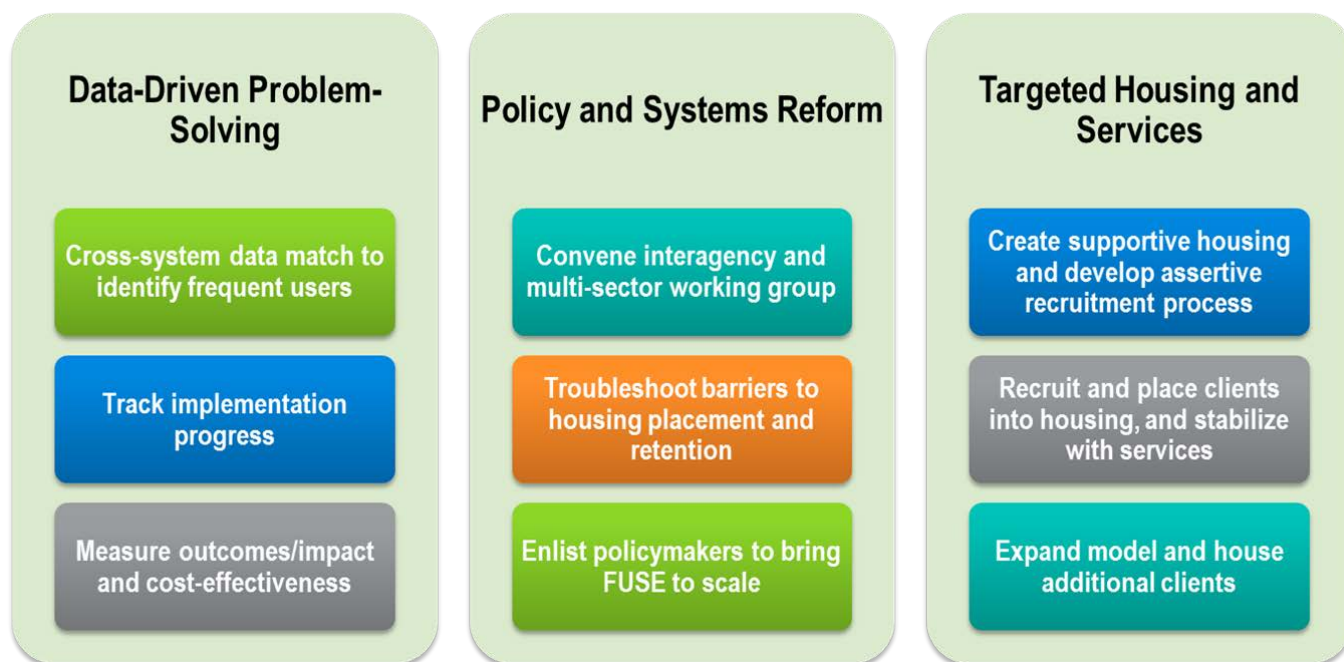


FUSE: FREQUENT USERS SYSTEMS ENGAGEMENT

The FUSE Premise

Thousands of people with chronic health conditions cycle in and out of crisis systems of care, other institutions, and homelessness - at great public expense and with limited positive human outcomes.

Placing these people in supportive housing will improve life outcomes for the tenants, more efficiently utilize public resources, and likely create cost avoidance in crisis systems like jails, hospitals and shelter.



Data Driven Problem-Solving

Data is used to identify a specific target population of high-cost, high-need individuals who are shared clients of multiple systems (jails, homeless shelters and crisis health services) and whose persistent cycling indicates the failure of traditional approaches. Data is also used to develop a new shared definition of success that takes into account both human and public costs, and where the focus is on avoiding institutions altogether, as opposed to simply offloading clients from one system to another.

Policy & Systems Reform

Public systems and policymakers are engaged in a collective effort to address the needs of shared clients and to shift resources away from costly crisis services and towards a more cost-effective and humane solution: permanent housing and supportive services.

Targeted Housing Services

Supportive housing—permanent housing linked to individualized supportive services—is enhanced with targeted and assertive recruitment through in-reach into jails, shelters, hospitals and other settings, in order to help clients obtain housing stability and avoid returns to costly crisis services and institutions.

More Information Available Here: <http://www.csh.org/fuse>