

SE PORTLAND
RESIDENTIAL LAND (R5a)
PUBLIC SALE APRIL 23, 2018
9:00 am Registration | 10:00 am Sale
501 SE HAWTHORNE, PORTLAND, OR

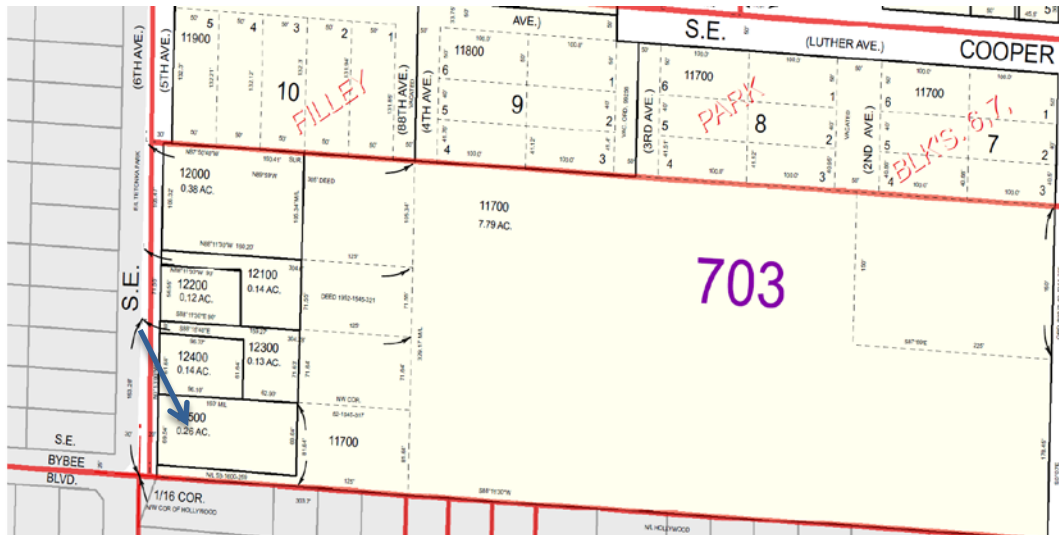
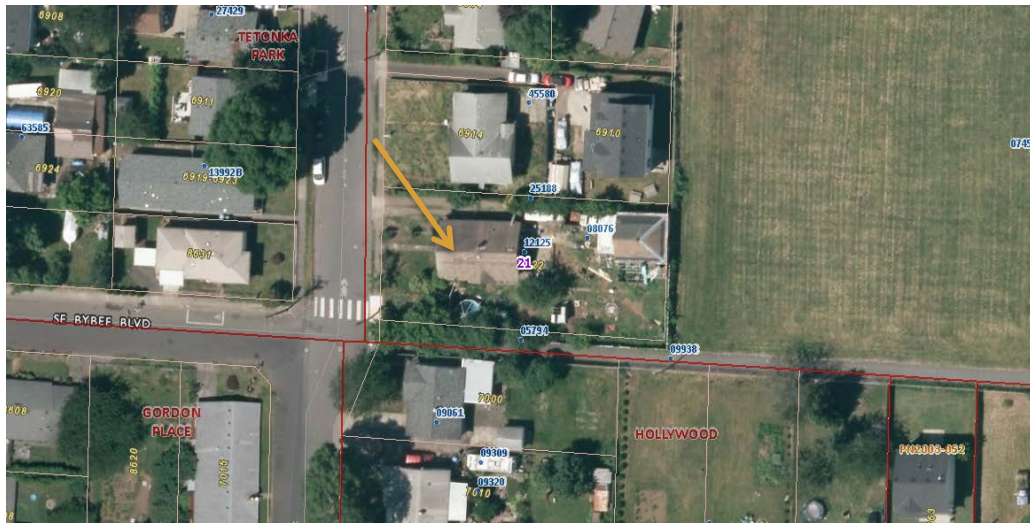
6922 SE 87TH Ave
Portland, OR 97266
Tax Account: R336601
Map Tax Lot: 1S2E21BA -12500
Lot Size: 0.26 Acres (11,125 SF)
Minimum Price: \$150,000
Earnest Money: \$30,000



Property may have mold, lead paint and other conditions which render the improvements NOT habitable and without economic potential. Valuation expectations are as redevelopment land. Property to be sold at the Public Sale to the highest and best bid that meets the minimum price with an optional Earnest Money Agreement-Inspection Waiver. Interior access prior to closing may require specialized environmental personnel with personal protective equipment. More information, including Public Sale List, Procedures, and Schedules: multco.us/taxtitle



MULTNOMAH COUNTY TAX TITLE PUBLIC SALE APRIL 23, 2018



DISCLAIMER

All properties are sold “AS IS” Potential buyers should thoroughly investigate all aspects of a property prior to bidding. Multnomah County does not guarantee or warrant that any parcel is usable for any particular purpose.

Please be advised that County employees are not authorized to answer specific questions regarding the properties, including but not limited to: the size, the condition, the planning, zoning or building codes or regulations applicable thereto. Any statement by a County employee on these matters is not binding on the County; except and unless such a statement is made by a County Land Use Planning Division staff member in the context of a formal land use decision wherein the County is the land use planning jurisdiction with respect to the subject property

The information contained herein has been obtained through sources deemed reliable by Multnomah County but cannot be guaranteed for its accuracy. It is highly recommended buyer and interested parties independently verify any information.

multco.us/taxtitle