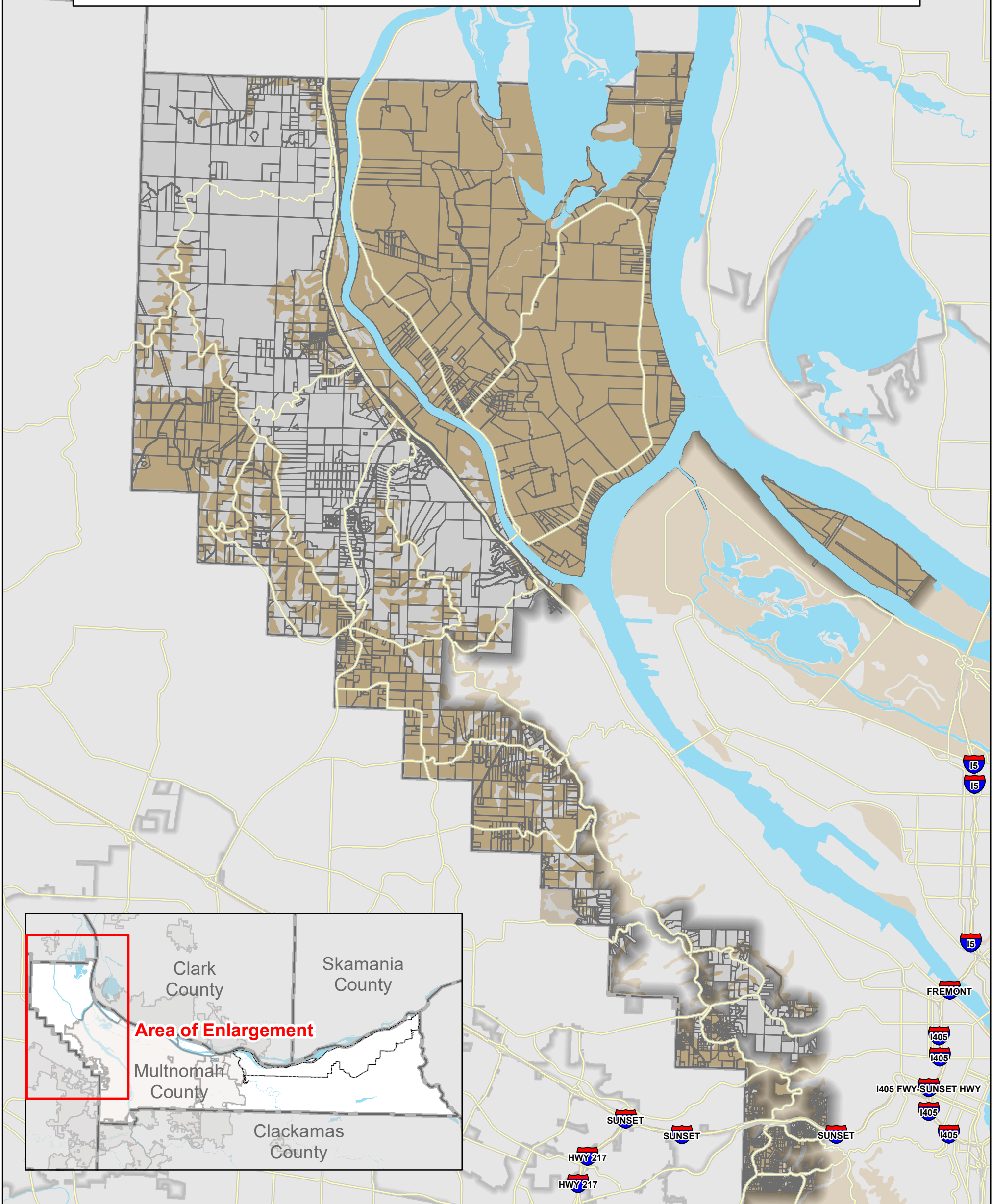


Multnomah County

ATTACHMENT D

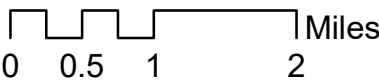
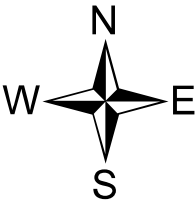
Soil Designations

West Hills and Sauvie Island/Multnomah Channel Rural Areas



Soil Classification

- Prime Farmland (Class 1 and Class 2 Soils)
- Not Prime Farmland
- County Boundaries
- Taxlot Boundaries
- Arterial
- River/Lake



DISCLAIMER: This map is provided for informational purposes only. Information used to develop this map have been obtained from many sources and is not guaranteed to be accurate. Multnomah County assumes no responsibility for the accuracy of information appearing on this map.