

A stylized graphic on the left side of the slide. It features two dark green mountain peaks in the upper left. Below them is a dark green wavy band representing a forest or middle ground. At the bottom is a blue wavy band representing water. The graphic is composed of solid-colored shapes with white negative space between them.

Health Department: MHASD

ARCH - Assessment Recovery
Community Housing

Neal Rotman
Senior Manager
Community Mental Health Program

ARCH is a brief stay, 1-3 months, transitional housing program that provides stabilization services that support houseless individuals in mental health recovery.

- 24/7 professional and peer staff on site
- Behavioral Health and functional assessments
- Medication tracking and support
- Nutritious Meals
- Individual and group support services



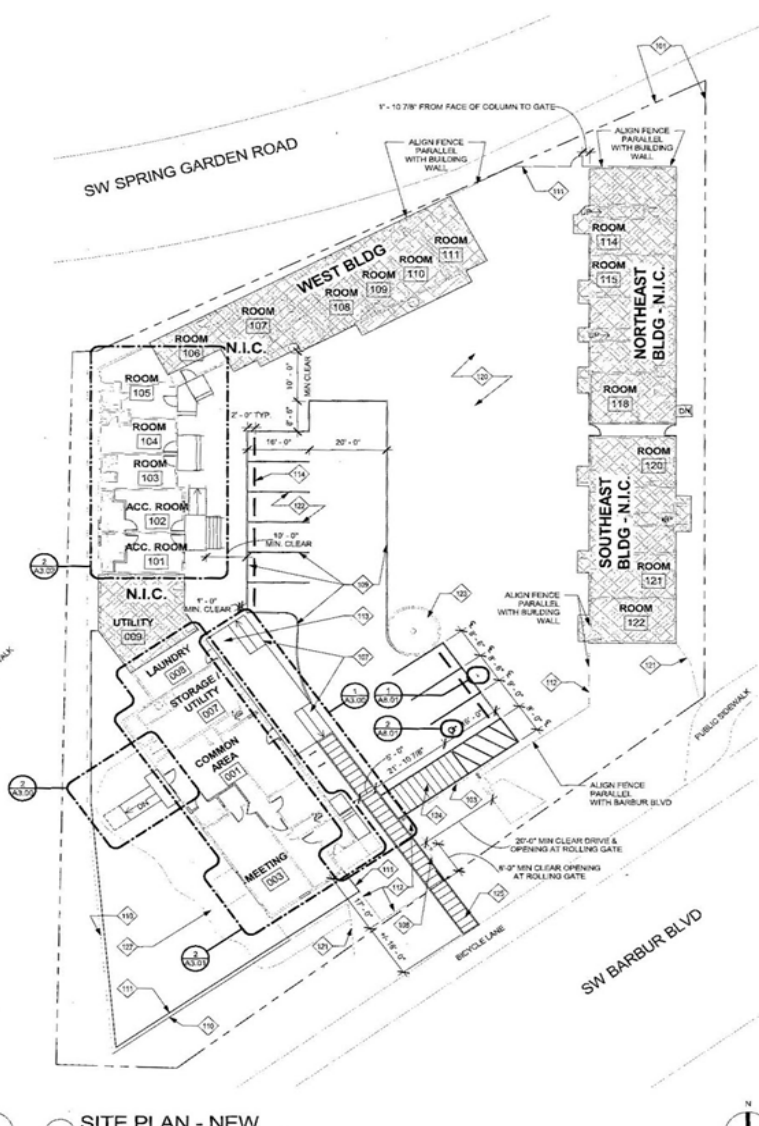
ARCH will be located at the former Budget Lodge at 8715 SW Barbur Blvd.

- County is leasing and renovating the property to support a stabilization program
- Adding two ADA accessible units
- Common areas ADA accessible
- Adequate meeting space to ensure both program and external service delivery
- 22 Single and/or double occupancy rooms





County
Facilities & Property Mgmt.
401 N. Dixon Street
Oakland, CA 94612



SITE PLAN - NEW

- A. REPAIR FLASHING, SIDING, AND TRIM AS NEEDED.
- B. PROVIDE FLASHING AT WINDOW HEADS AND SILLS
- C. REPLACE SELECT WINDOW SCREENS WHERE RENT OR MISSING
- D. INSTALL LOCKABLE ATTIC ACCESS POINTS FOR ALL ATTIC AREAS
- E. REPLACE ALL WATER HEATERS WITH NEW - INSTALL REQUIRED VENTING, STRAPPING, AND PIPING
- F. REMOVE TRIP HAZARDS CAUSED BY WATER PIPING.
- G. REPLACE HOSE BIBS WITH FROST FREE.
- H. SECURELY SUPPORT LOOSE EXPOSED CASING OR REMOVE.
- I. RESEAL PARKING LOT.
- J. CLEAN OUT CATCH BASINS, ENSURE CATCH BASINS ARE UNOBSTRUCTED

- 101 ASSUMED EXISTING PROPERTY LINE LOCATION
- 103 ROLLING GRADE, 2% OPENING
- 107 RAMP 1:20 MAXIMUM SLOPE
- 108 ROLLING GATE, 8' OPENING
- 109 PARKING AND DRIVEWAY STRIPING, TYPICAL
- 110 EXISTING FENCE AT WEST LOT LINE
- 111 BLACK CHAINLINK FENCE 6" 6' HIGH
- 112 BLACK CHAINLINK FENCE 3" 4' HIGH
- 113 CONCRETE PAD AT LEVEL OF DOOR THRESHOLD, 4" 6" ADJACENT GRADE AT EXISTING PAVING
- 114 WHEEL STOP, TYPICAL
- 120 RETAIN EXISTING PAVING
- 121 EDGE OF EXISTING PAVING
- 122 TYPICAL PARKING SPACE DIMENSION: 8' 6" X 16' 6"
- 123 RETAIN EXISTING CURB, LANDSCAPING, AND FLAGSTONE
- 124 PEDESTRIAN PATH, 4" PARKING STRIPING, 2" 4" APART, STRIPING PARALLEL TO DIRECTION OF PEDESTRIAN TRAVEL
- 125 EXTEND PEDESTRIAN PATH STRIPING TO EDGE OF SIDE WALK
- 127 EXISTING CONCRETE PATIO, 4" 6" ADJACENT GRADE AT EXISTING LANDSCAPING
- 128 REMOVE EXISTING CONCRETE STOPS, STEPS, AND HANDRAILS PRESENT, TYPICAL, PREP FOR NEW CONCRETE. PATCH AREA NOT COVERED BY NEW PATO WITH ASPHALT TO MATCH ADJACENT EXISTING ASPHALT, FLUSH WITH ADJACENT ASPHALT.
- 129 REMOVE STRIPING AND WHEELSTOPS, TYPICAL
- 130 REMOVE PAINTERS, PREPARE TO RECEIVE 8" HIGH CONCRETE PAVES. PATCH AREA NOT COVERED BY NEW PATO WITH ASPHALT TO MATCH ADJACENT EXISTING ASPHALT, FLUSH WITH ADJACENT ASPHALT.
- 132 REMOVE MONUMENT SIGN AND CURB, PATCH ASPHALT AFFECTED BY DEMOLITION TO MATCH ADJACENT ASPHALT, FLUSH WITH ADJACENT ASPHALT.
- 133 REMOVE PAVERS
- 134 REMOVE WOOD STRUCTURE

LEGEND

 NOT IN CONTRACT - FUTURE



ARCH can serve up to 24 adults with behavioral health and/or medical issues who are houseless and in need of 24/7 support to maintain their recovery and to locate permanent housing.

Projected number to be served annually = 125



ARCH will serve individuals who are referred from the following programs:

- Health Department/MHASD Crisis Service Programs
- Health Department/MHASD Jail Diversion Programs
–DCJ
- Unity BH Center/Providence Medical Center
- Multnomah County Detention Center
- Health Department/MHASD Care Coordination
- JOHS Housing Outreach services



ARCH clients will benefit from extra support. Unlike other transitional housing programs, ARCH gives clients several unique services:

- 24/7 staffing with a 2:22 staff-to-client ratio
- Intensive case support for each individual with a case manager on site
- Group and individualized skills training with peers
- On-site office space for Care coordination, behavioral health counselors, housing specialists, Parole/Probation, Jail Diversion and nursing oversight



ARCH is a collaborative effort. The following organizations are working together to ensure clients' success:

- Multnomah County Health Department/Mental Health and Addiction Services Division (MHASD)
- Multnomah County Joint Office of Homeless Services
- Central City Concern (CCC)
-
- Health Share of Oregon- Multnomah Mental Health
- Care Oregon- Behavioral Health High Risk Program
- Meals On Wheels People





Justice Involved Individuals connecting to MH services:

Approximately 7,000 MCDC jailed individuals were cross referenced with MHASD service enrollments. Due to data limitations; no DOB, spelling of name errors, multiple names, the data is not complete or conclusive.

2013 - 230 indivs Received 3,468 services

2017 - 517 indivs Received 10,977 services

In 2017:

- 360 indivs received 2,163 service contacts with the MH Call Center
- 280 indivs received 2,069 outpt behavioral health services



Questions?

