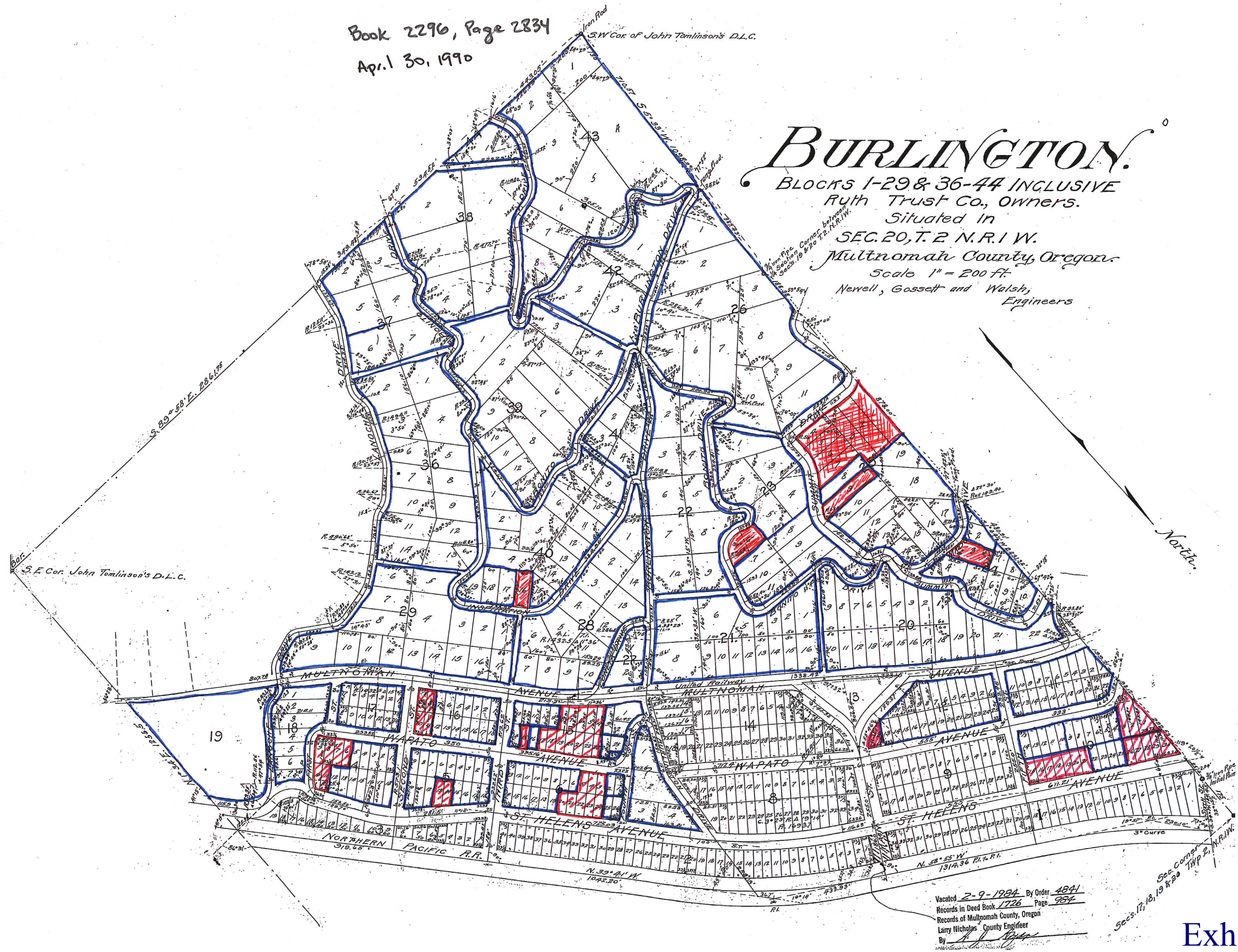


Book 2296, Page 2834
Apr. 1 30, 1990

BURLINGTON.
BLOCKS 1-29 & 36-44 INCLUSIVE
Ruth Trust Co., Owners.
Situated in
SEC. 20, T. 2 N. R. 1 W.
Multnomah County, Oregon.
Scale 1" = 200 ft.
Newell, Gossett and Walsh,
Engineers



Vacated 2-9-1984 By Order 4841
Records in Deed Book 1726 Page 984
Records of Multnomah County, Oregon
Larry Nicholas County Engineer
By *[Signature]*

Exhibit B.49