

North Tualatin Mountains

Burlington Creek, McCarthy Creek, Ennis Creek, North Abbey Creek



Overview

- **Size:** 1,300 acres amongst four separate sites
- **Location:** Unincorporated Multnomah County, 20 minutes northwest of downtown Portland
- **Naturehood:** Tualatin Mountains

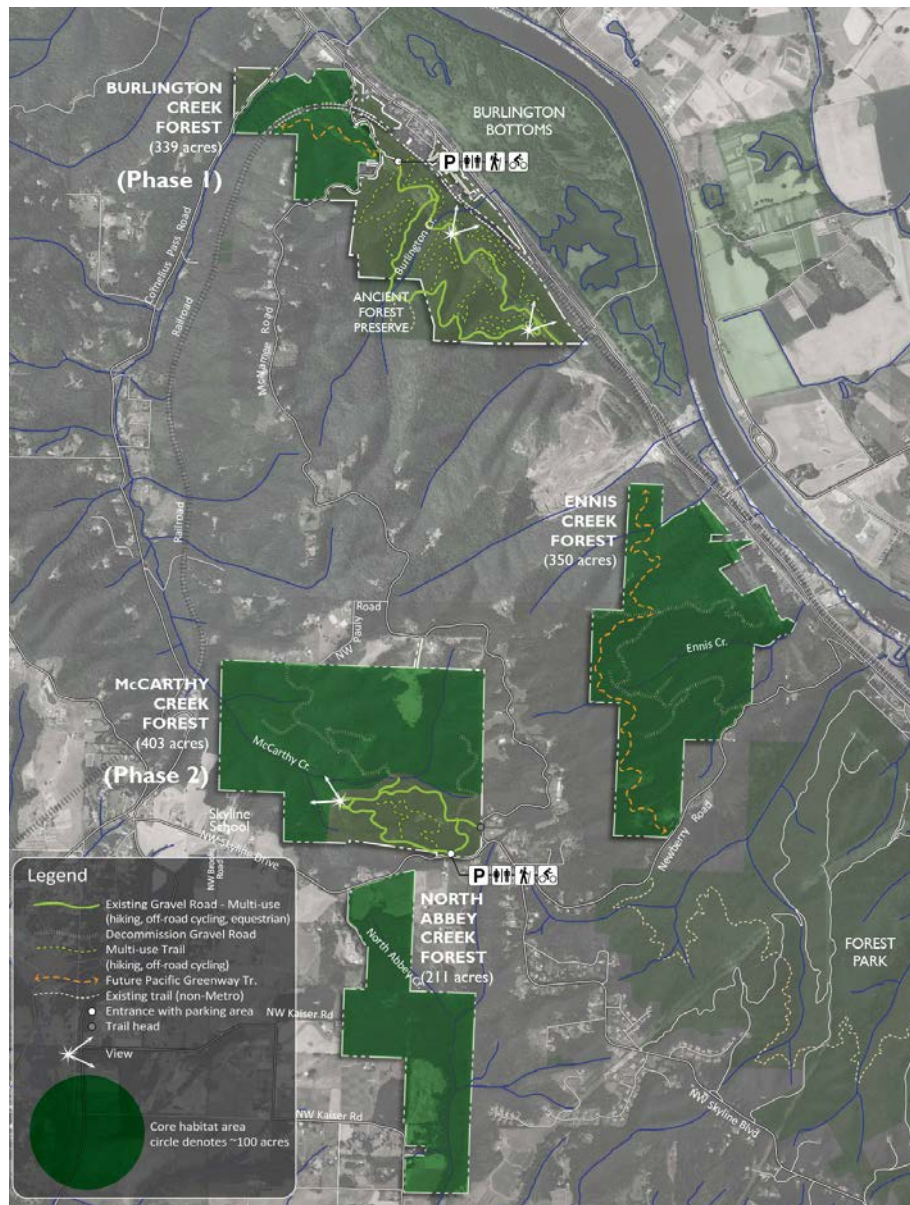
The North Tualatin Mountains (NTM) natural areas are a collection of four voter-protected sites north of Forest Park, totaling approximately 1,300 acres. The properties were purchased thanks to two voter approved general obligation bond measures to protect water quality, wildlife habitat and outdoor recreation opportunities across the region. Collectively, the four sites preserve large blocks of upland and riparian forest, protect several streams, and provide habitat connectivity

between Forest Park, Washington County and the Coast Range.

In April of 2016, the North Tualatin Mountains Access Master Plan was adopted by the Metro Council. Working with project partners and community members, the plan preserves over three-fourths of the total acreage of the sites as conservation areas while also providing public recreation opportunities.

A first phase of park development is proposed at the Burlington Creek Forest site. At Burlington, planned improvements include: vehicle parking, a vault toilet, picnic table, information kiosk and trails for walking and off-road bicycling. Horseback riding will also be accommodated on an existing gravel road.

Before development can occur, Metro must receive land use approval from Multnomah County. This requires a change to the County's Comprehensive Plan, as well as several county land use permits. Accordingly, a land use application and permit applications were submitted to the county during the fall of 2017. Metro's applications are currently under review.



Project Stakeholders

Forest Park Conservancy, Forest Park Neighborhood Association, Northwest Trail Alliance, Oregon Department of Fish and Wildlife, Oregon Department of Forestry, Portland Parks & Recreation, Oregon Recreation Trails Advisory Committee, Skyline Ridge Neighbors, Skyline School, Trackers Earth, West Multnomah Soil and Water Conservation District

