



# **MULTNOMAH COUNTY**

## **Central Courthouse**

### **Board Briefing**

### **October 29, 2019**

Jean-Guy Deschamps, PE  
Multnomah County Facilities  
and Property Management

Department Of County  
Assets

- Construction update and photos
- Diversity Dashboard
- Maurice Rahming- O'Neil Electric
- Financial Update
- Schedule Update



- Sprinklers installed through penthouse
- Mechanical/Electrical/Plumbing: Rough-in up to Level 17
- Framing through Level 17
- Courtroom wood install started on Level 14
- Basement 95% complete
- Façade: windows complete and stone installation ongoing
- Jefferson Station: Structural steel installation started, shear walls and shotcrete on-going



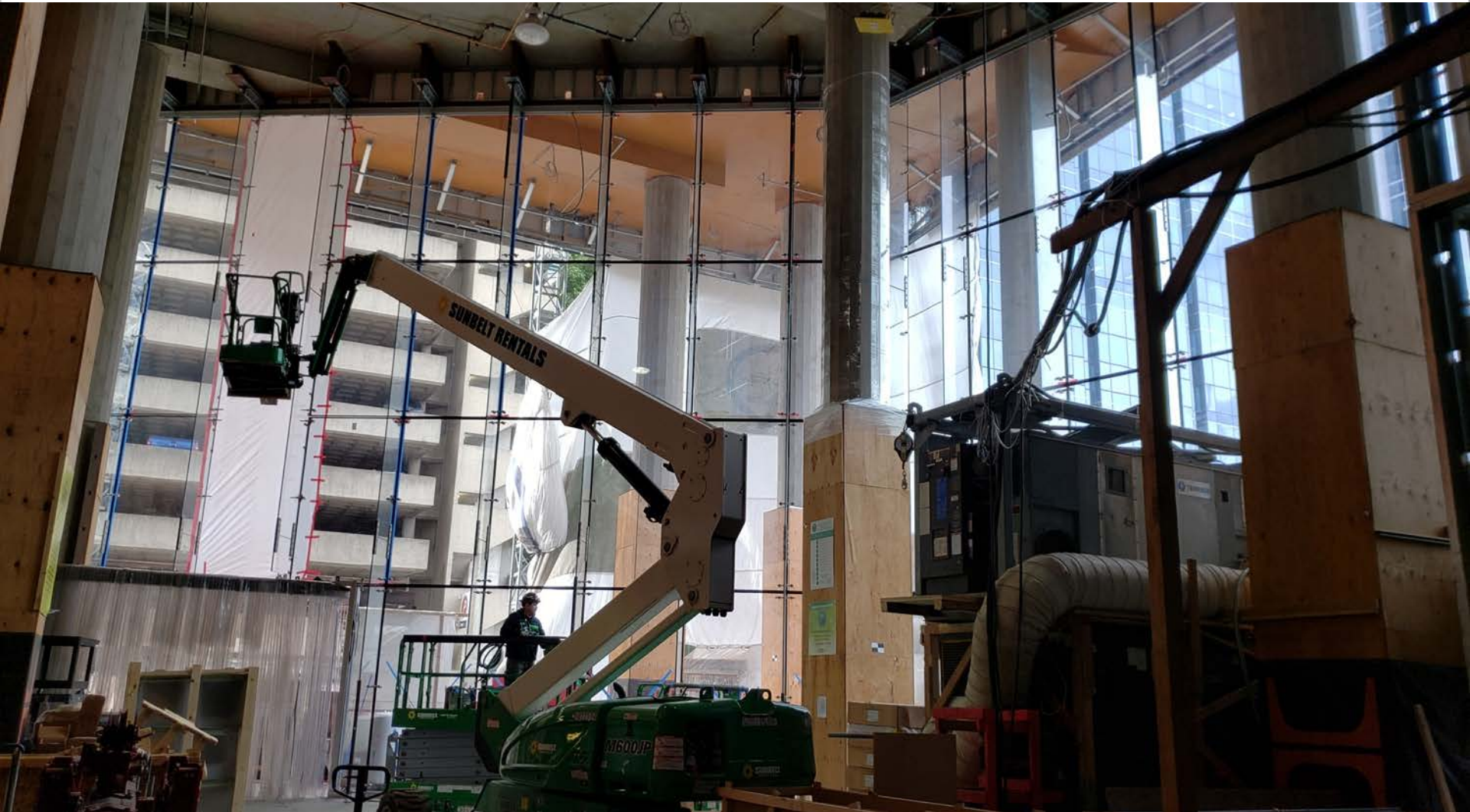


# Aerial photo – September 2019





# Lobby with Glass being installed



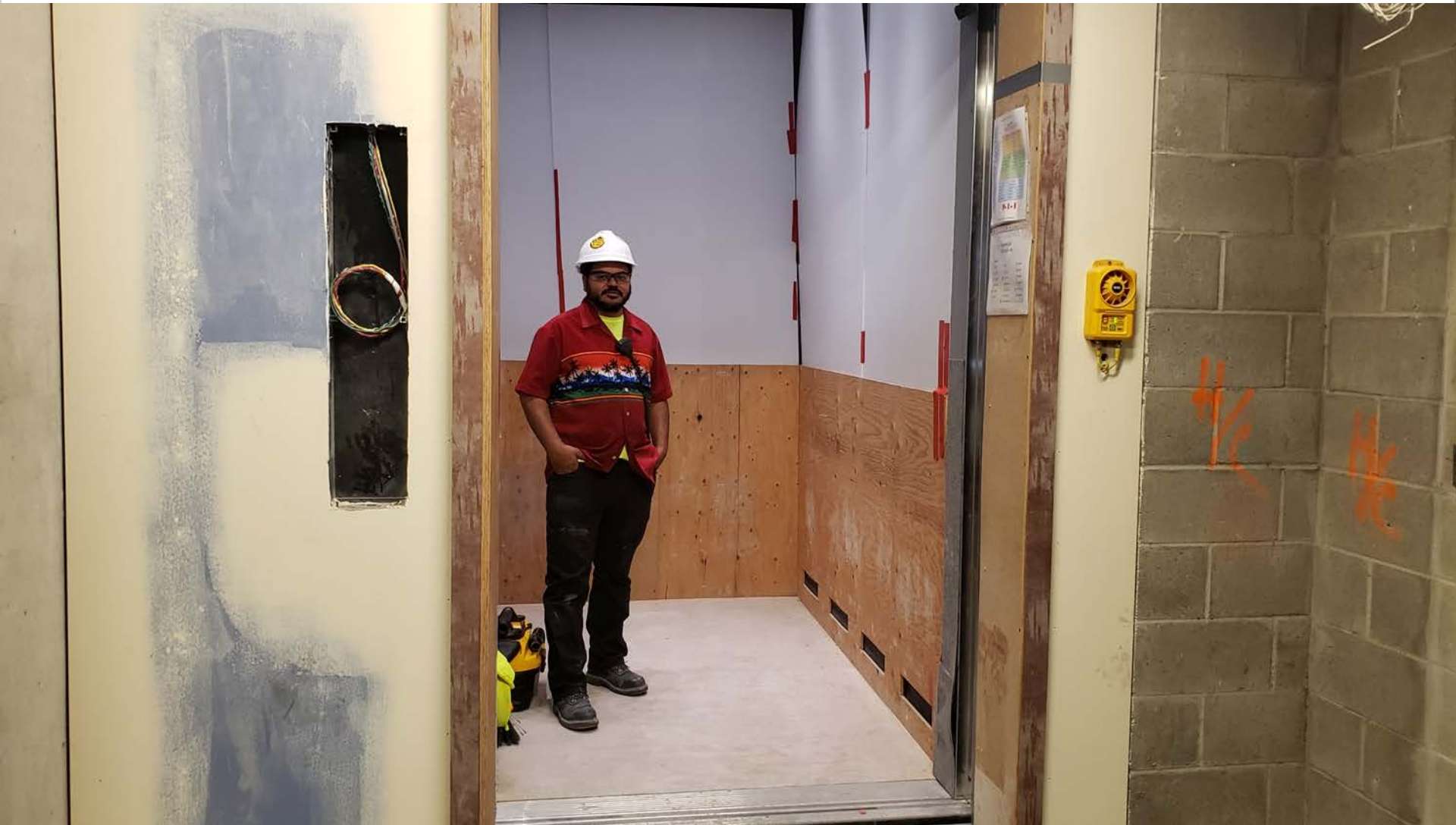
# Holding- Central Command

---

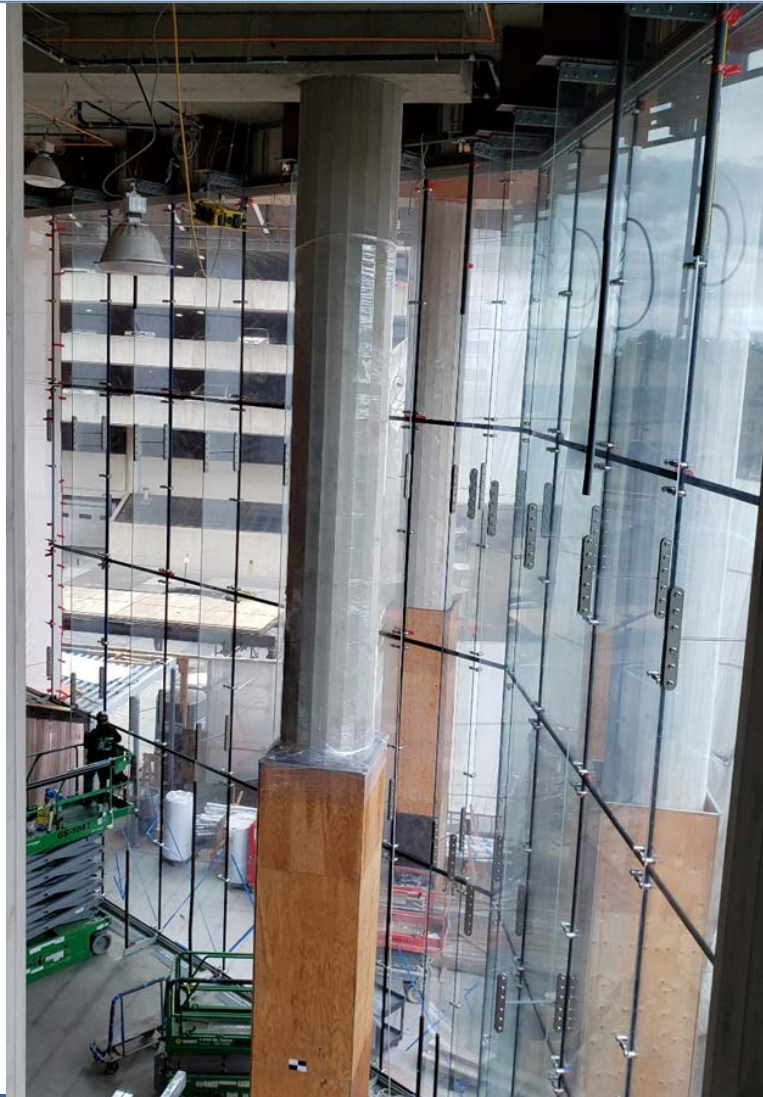




# Service Elevator



# Lobby from 3 floor elevator vestibule







# Grand Jury Room

---





## 7<sup>th</sup> Floor with Tile Installed

---





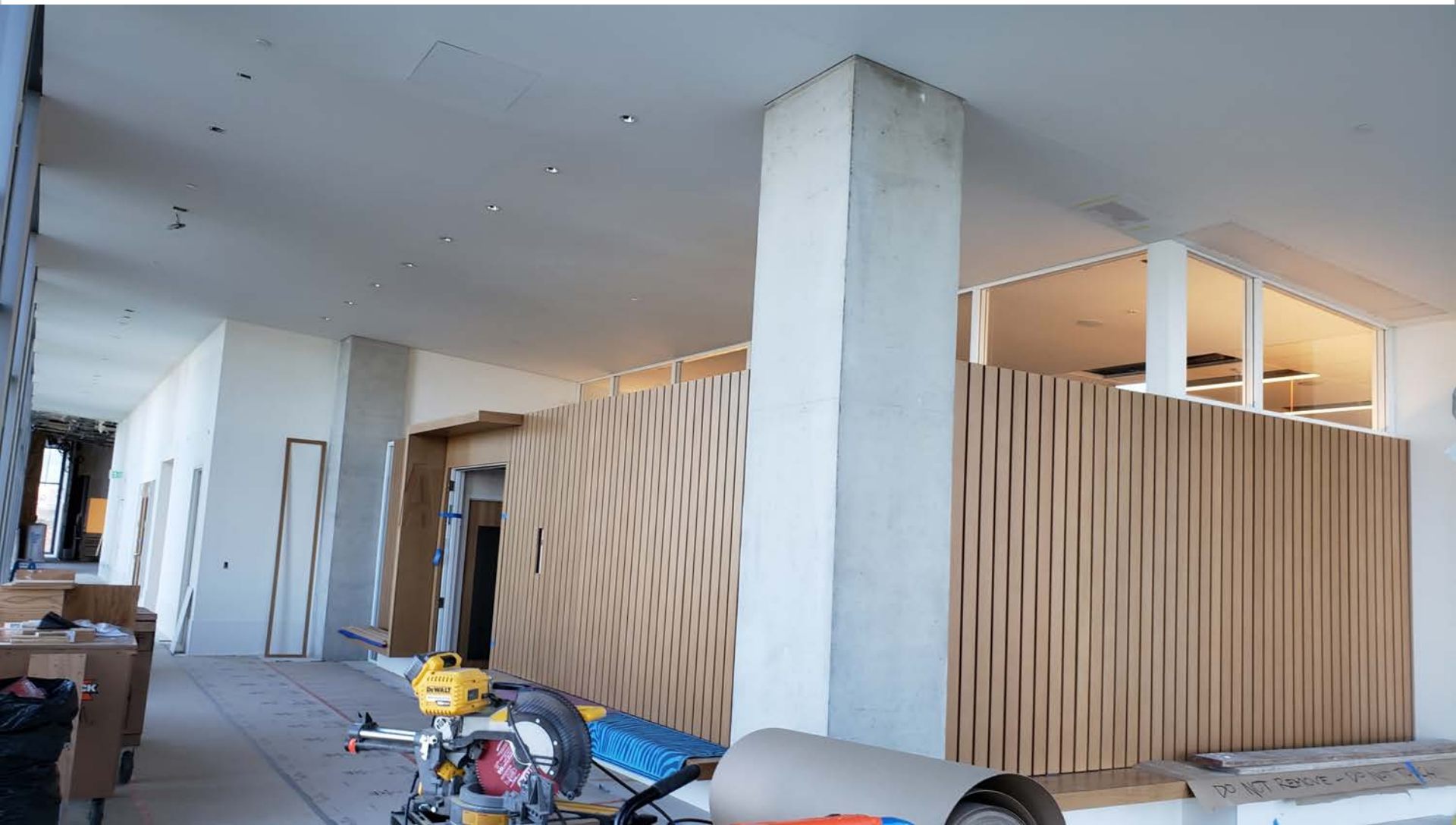
## 7<sup>th</sup> Floor Courtroom Entry

---



## 7<sup>th</sup> Floor outside Courtroom

---



# Courtroom 8A





# Courtroom 8A



# Courtroom 8A

---





## 8<sup>th</sup> Floor Public Corridor

---





# District Attorney Clothing Racks

---



# Jefferson Station Reconstruction

---





# Jefferson Stations – Referee's Offices

---





# Stone Install on-going

---





# Stone Install on-going

---





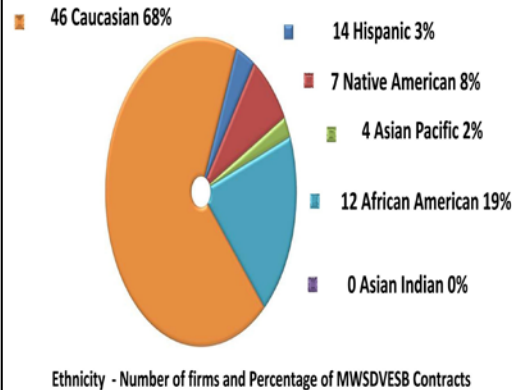
# July 2019 MCCCH Construction Small Business Dashboard

## Summary

These charts are based on contracts and dollars awarded to date.

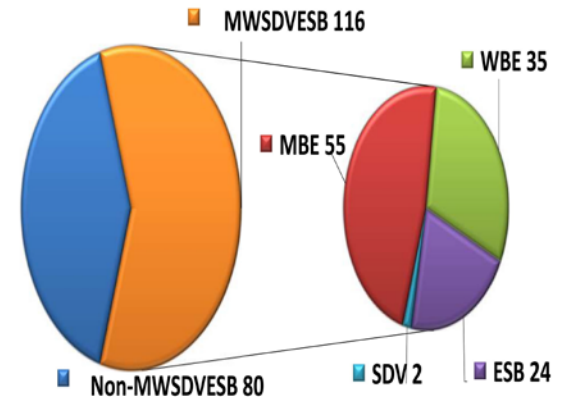
The contractor's goal is to award 20% of total contract dollars to MWSDVESB firms. Currently, MWSDVESB Contracted is 32% \*

## MCCCH MWSDVESB Firms Ethnicity

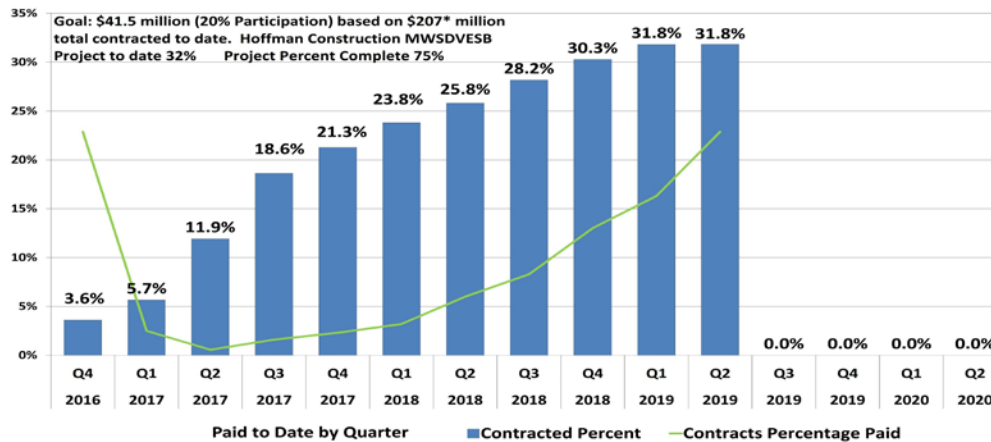


## MCCCH Total Contracts Awarded

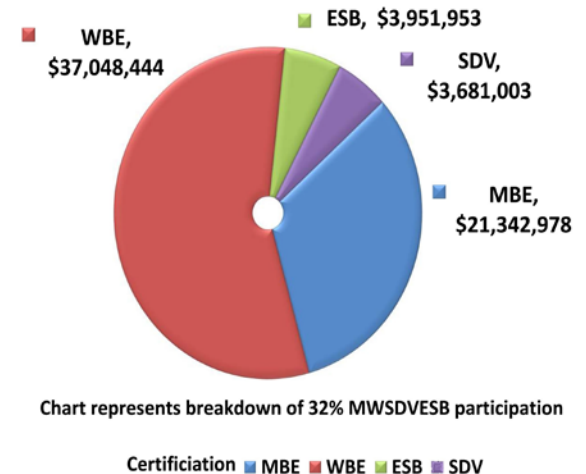
Total Contracts - 196



## Multnomah County Central Courthouse Construction MWSDVESB Participation Hoffman Construction Contracted and Paid to Date



## MCCCH MWSDVESB Participation By Dollars



Glossary: MBE—Minority-Owned Business, WBE—Women-Owned Business, ESB—Emerging Small Business, SDV - Service Disabled Veteran

\*Represents adjusted GMP construction value

Cumulative Construction Data from 10/31/2016 to /31/2019





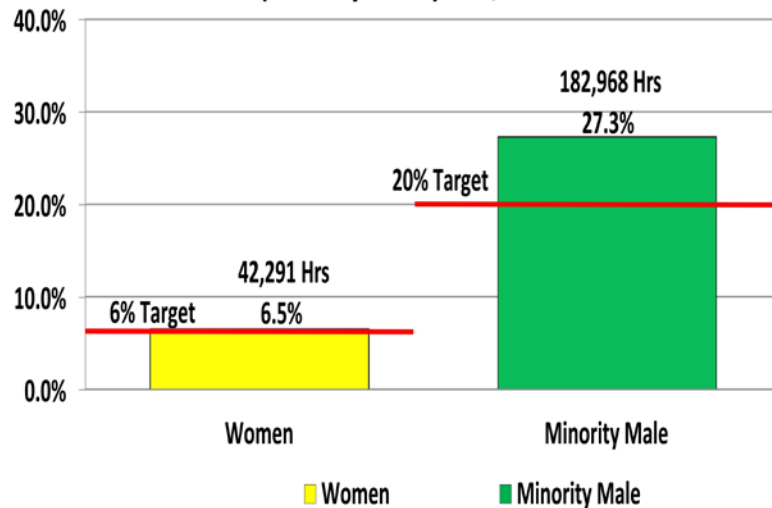
# July 2019 MCCCH

## Construction Workforce Dashboard

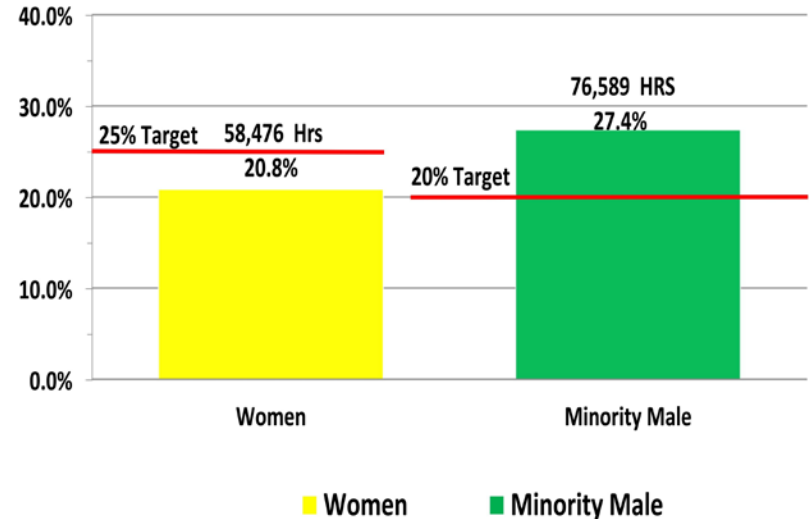
### Project Summary

- Total Project Apprenticeship to date is 30%
- Project Goal is 20% apprenticeship by trade
- Project Total minority male participation is 26% and female is 10.2%
- Project Percent Complete 80%

**Total Workforce Hours**  
(Journey Level) 658,059 Hrs



**Total Workforce Hours**  
(Apprentice Level) 279,799 Hrs



Cumulative Construction Data from 10/31/2016 to 7/31/2019

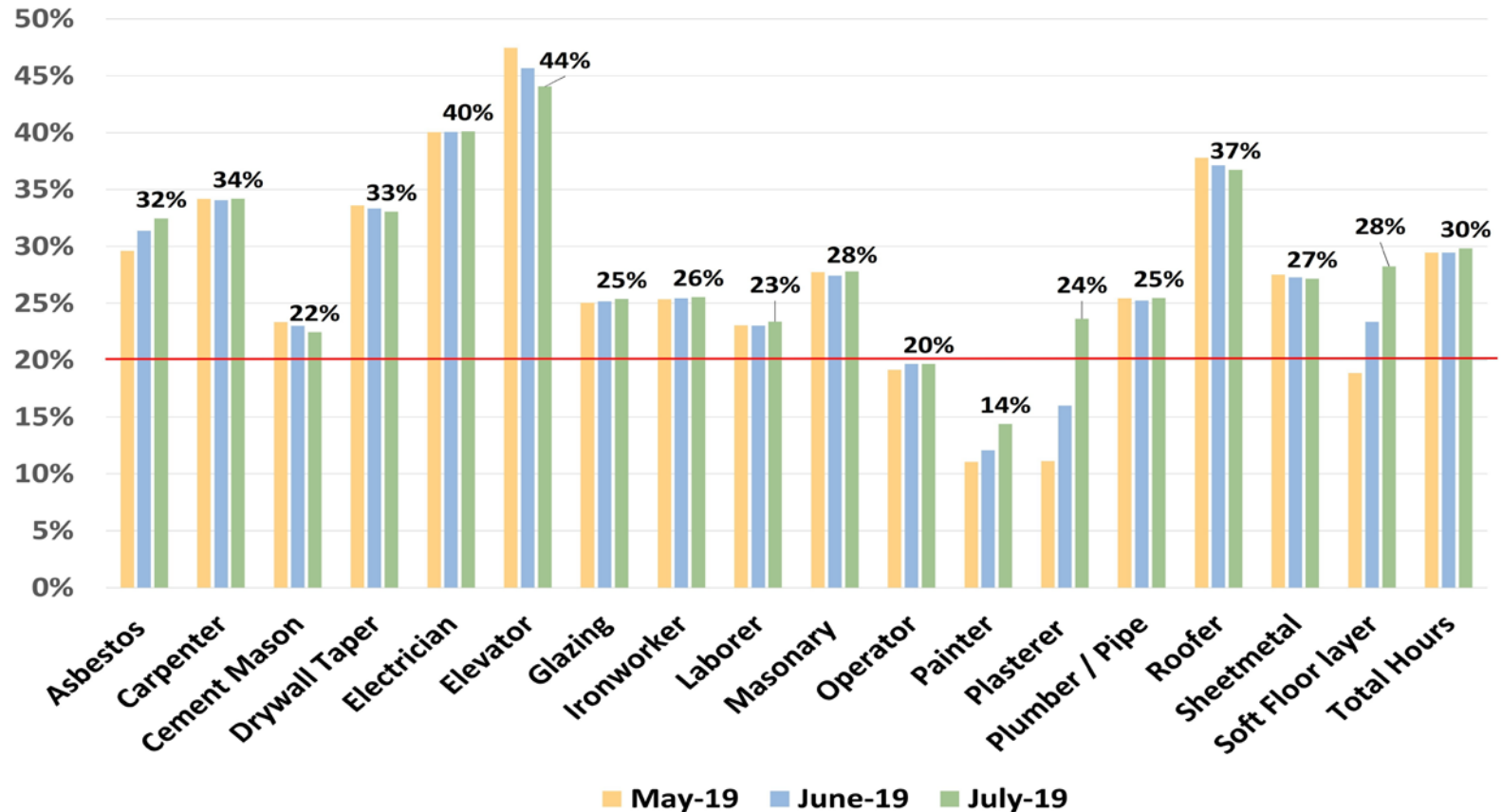
WTHP Participation for minority men and all women for apprentice and journey levels in accordance with the PLA.



# July 2019 MCCCH

## Construction Workforce Dashboard

### MCCCH Apprenticeship by Trade



Cumulative Construction Data from 10/31/2016 to 7/31/2019

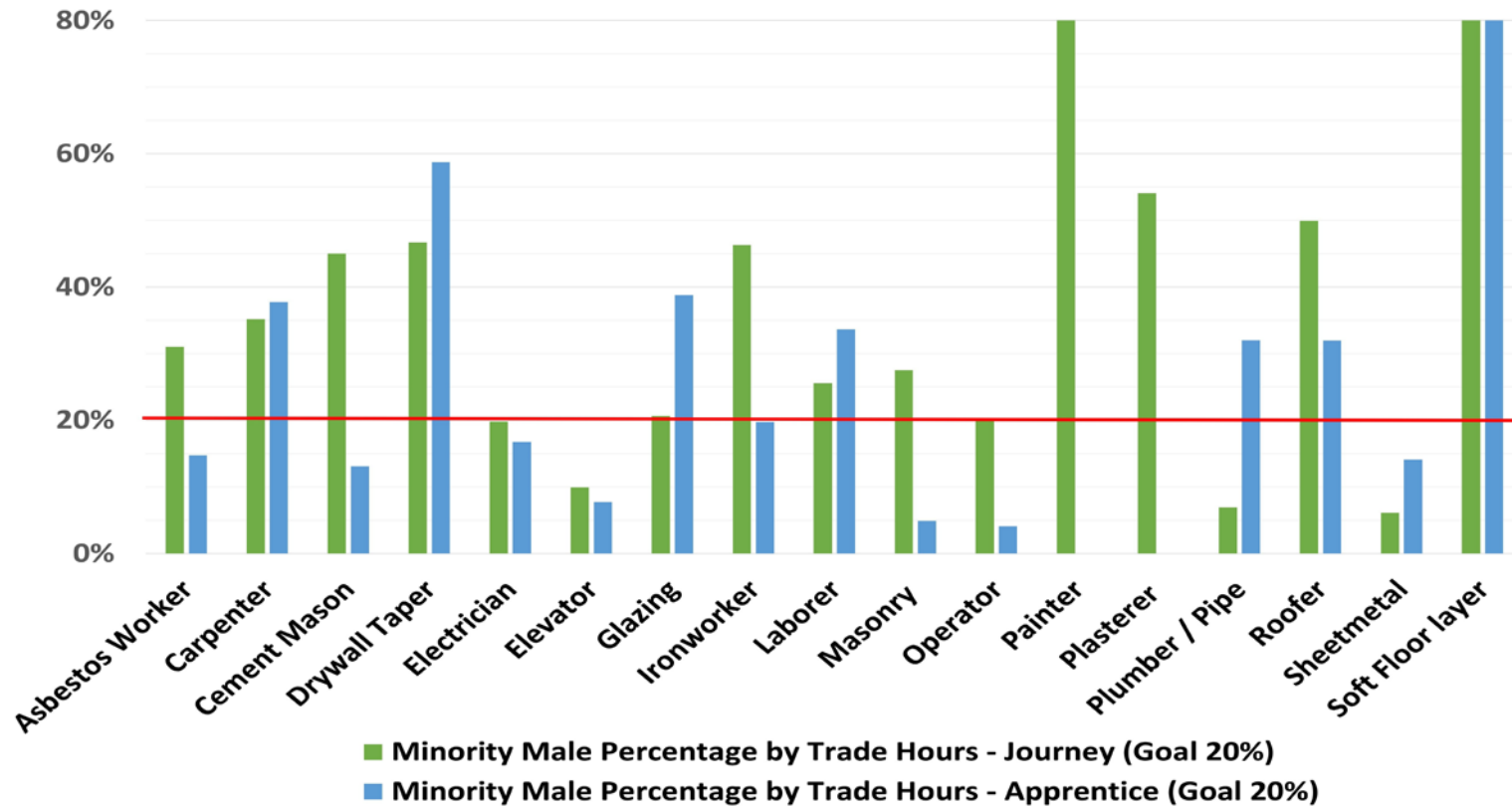
WTHP Participation for minority men and all women for apprentice and journey levels in accordance with the PLA.



# July 2019 MCCCH

## Construction Workforce Dashboard

### MCCCH Minority Male Journey & Apprenticeship by Trade Hours



Cumulative Construction Data from 10/31/2016 to 7/31/2019

WTHP Participation for minority men and all women for apprentice and journey levels in accordance with the PLA.

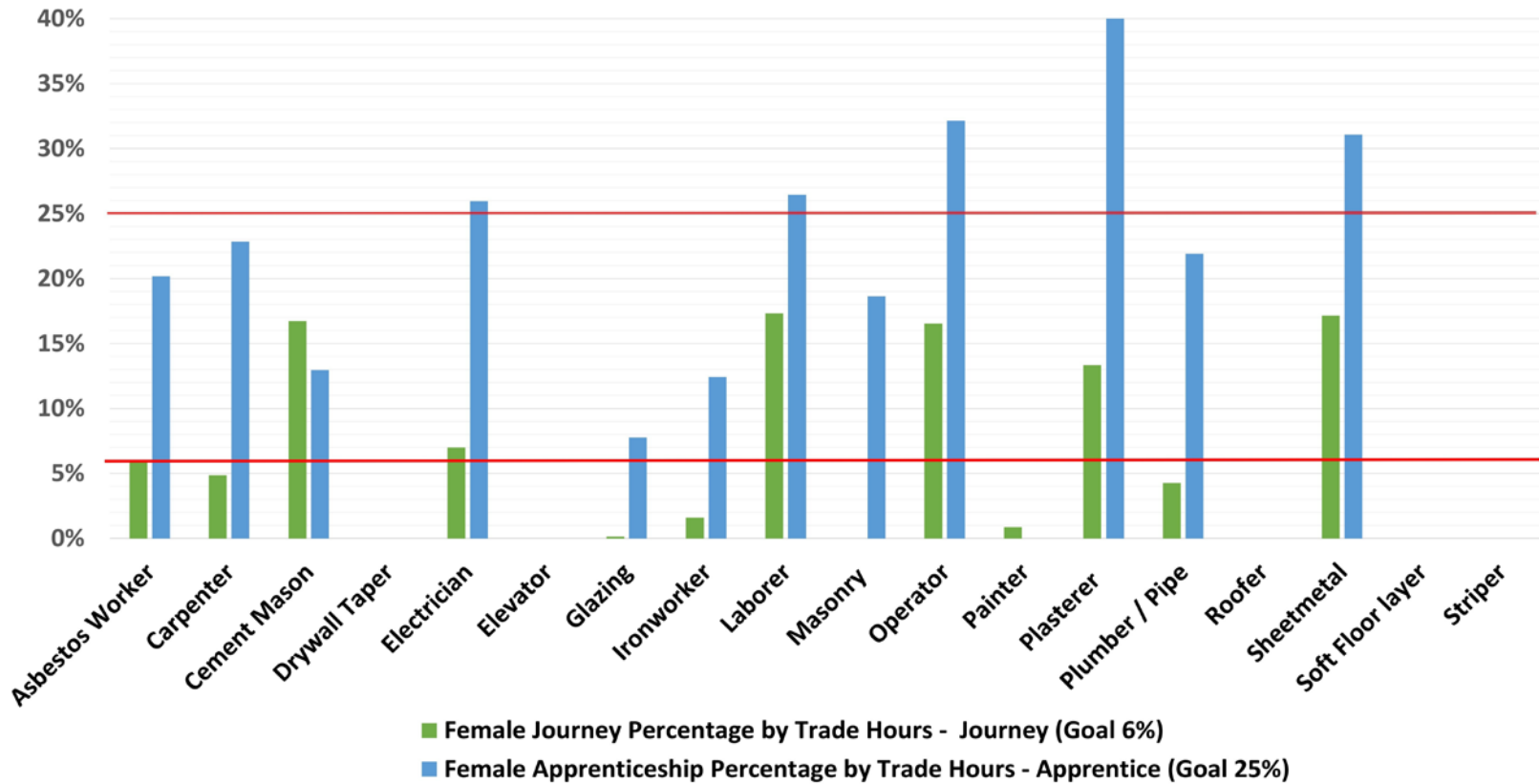




# July 2019 MCCCH

## Construction Workforce Dashboard

MCCCH Female Journey & Apprenticeship by Trade Hours



Cumulative Construction Data from 10/31/2016 to 7/31/2019

WTHP Participation for minority men and all women for apprentice and journey levels in accordance with the PLA.



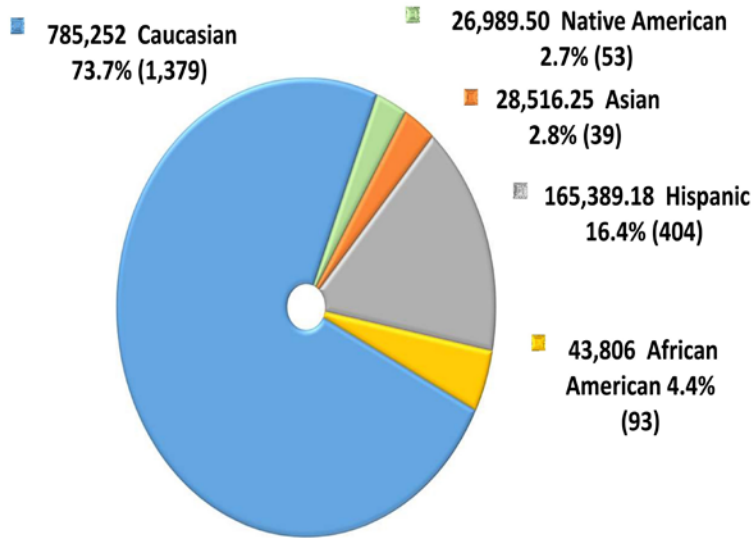
# July 2019 MCCCH

## Construction Workforce Dashboard

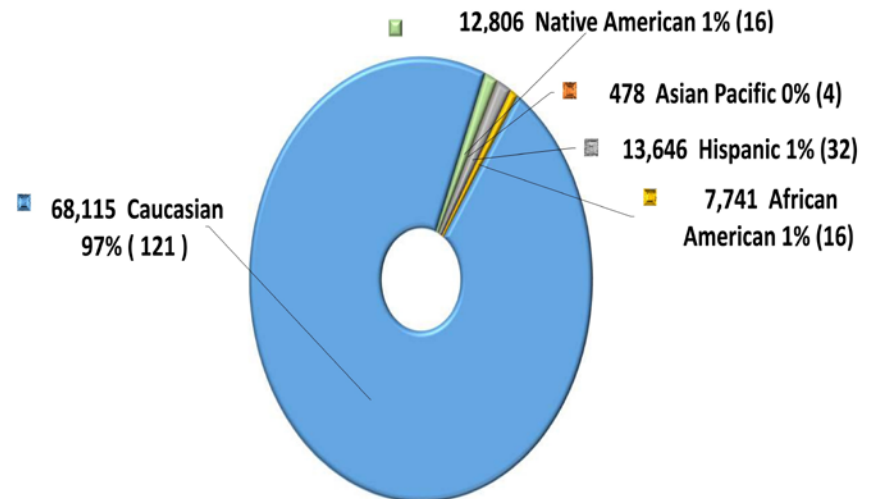
### Project Summary–

- Exceeding MWSDVESB and Overall Apprenticeship Goal
- . 380+ Workers Daily – Diversity is Consistent
- Landscape, Sitework and Final Cleaning Buyouts Complete  
– Added 2 MBE Firms
- Project Percent Complete 80%

Total Male Workforce By Ethnicity



Total Female Workforce Ethnicity



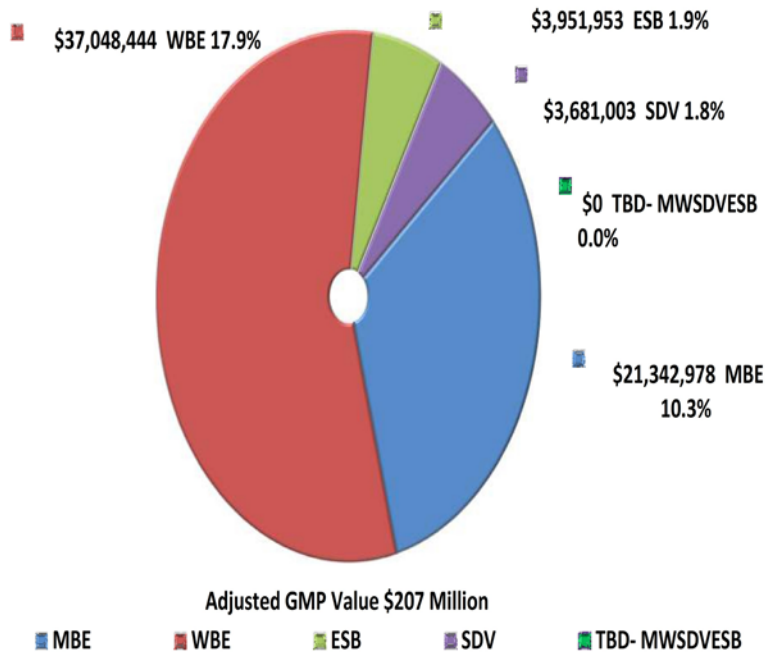


# July 2019 MCCCH Construction

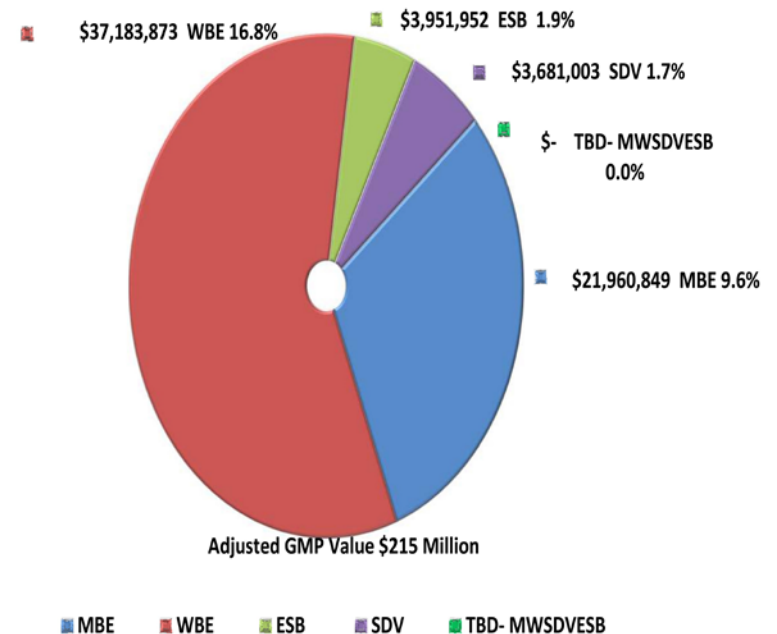
## MWSDVESB Actual vs Forecast Percentage

### Project Percent Complete 80%

MCCCH MWSDVESB Current Percentage 32% - July 2019



MCCCH MWSDVESB Forecast Percentage 31.1% - Dec 2020





# Financial Update

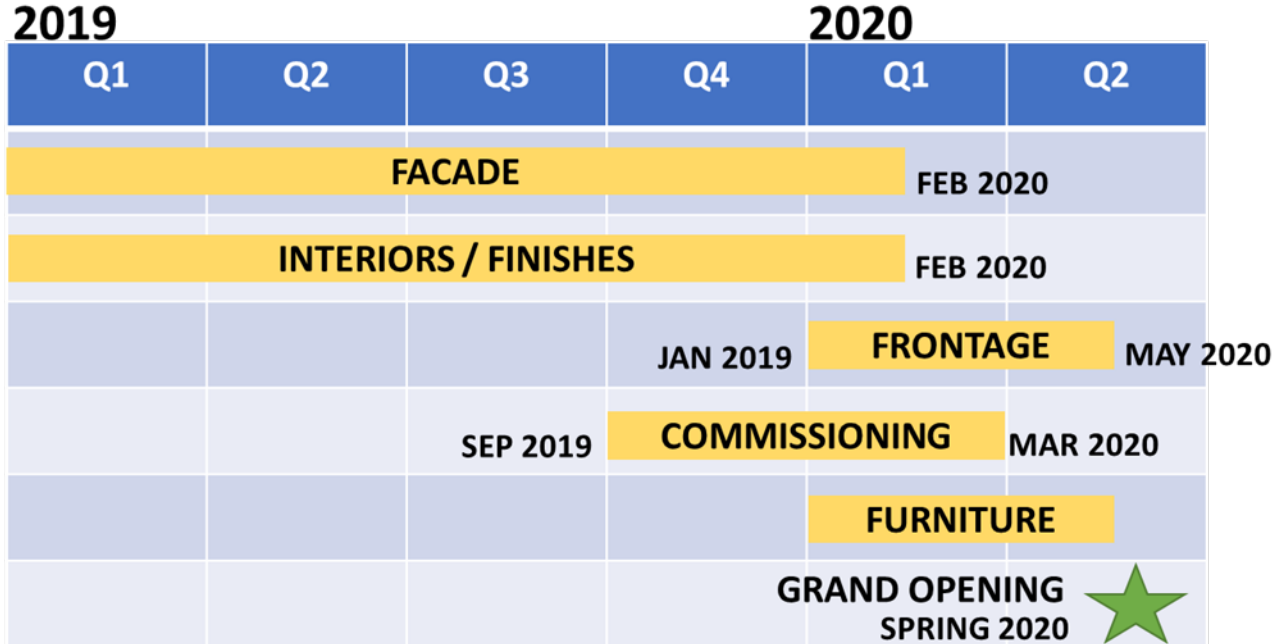
	Budget	Costs to Date
Construction	\$247,000,000	\$225,100,000
Soft Costs	\$64,000,000	\$57,000,000
<b>Total (incl. contingency)</b>	<b>\$324,500,000</b>	<b>\$282,100,000</b>

<b>Contingency Budget</b>	<b>\$13,500,000</b>
Additional Contingency	<b>+\$3,000,000</b>
Contingency Allocations	-\$12,800,000
Remaining Contingency	<b>+\$3,700,000</b>

<b>Financing (To date)</b>	
County Funding (OTO)	\$92,400,000
State Payments to County	\$104,100,000
County Bonds Sale	\$96,000,000
Existing Courthouse Sale	13,300,000



# Schedule



- Commissioning of Penthouse mechanical equipment on-going
- Façade work to continue with focus on stone installation
- Interior Finishes work to continue, focus on Courtrooms
- Frontage Improvements to start in early 2020



Questions?