



East County Issue Forum: 2020 U.S. Census

December 3, 2020



REPRESENT

Get Counted 2020 Census



Opening Remarks

REDISTRICTING

Multnomah County Auditor - Jennifer McGuirk

FEDERAL LANDSCAPE

Squire Patton Boggs - Vicki Cram

USCB PROCESSES

US Census Bureau - Marc Czornij

DATA COLLECTION

Portland State University Population Research Center - Ethan Sharygin

OREGON COMPLETE COUNT COMMITTEE

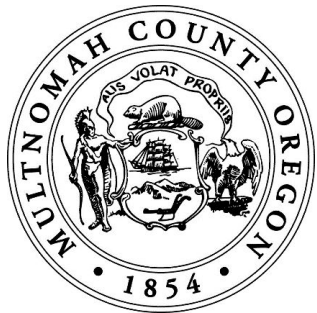
Equity & Inclusion Office, Office of Governor Kate Brown - Shawneen O'Brien-Lee

MULTNOMAH COUNTY OUTREACH

Multnomah County, Office of Commissioner Stegmann
Layan Ammouri & Adam Bristow

How Multnomah County Redistricts

2021 Redistricting



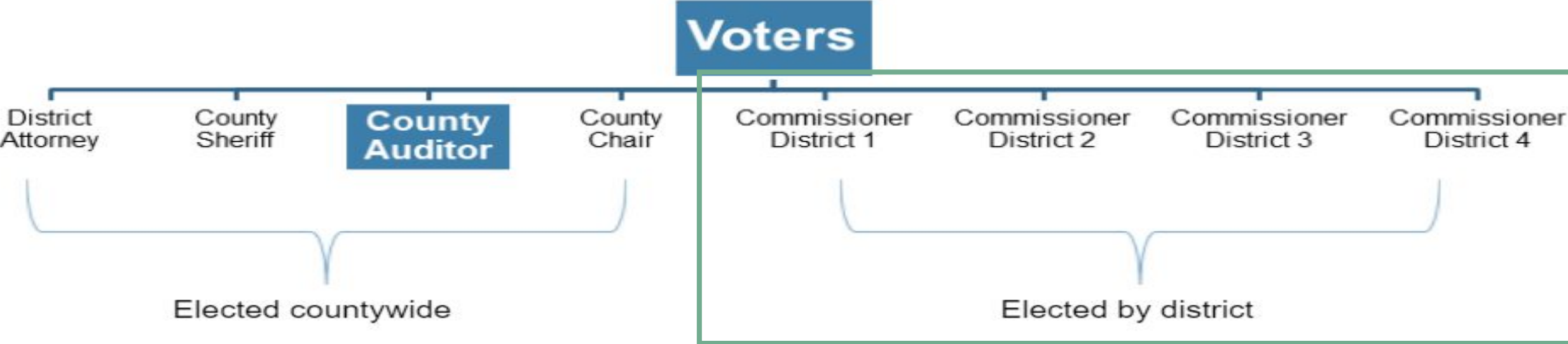
Jennifer McGuirk, MPA, CIA, Multnomah County Auditor

Multnomah County Redistricting

It's boring – in a good way!

Multnomah County Redistricting

What is redistricted in Multnomah County?



Multnomah County Redistricting



Sharon Meieran

District One Commissioner Sharon Meieran



Susheela Jayapal

District Two Commissioner Susheela Jayapal



Jessica Vega Pederson

District Three Commissioner Jessica Vega Pederson



Lori Stegmann

District Four Commissioner Lori Stegmann

Multnomah County Redistricting

Commissioners are elected as nonpartisan public servants

Multnomah County: Redistricting Without Gerrymandering

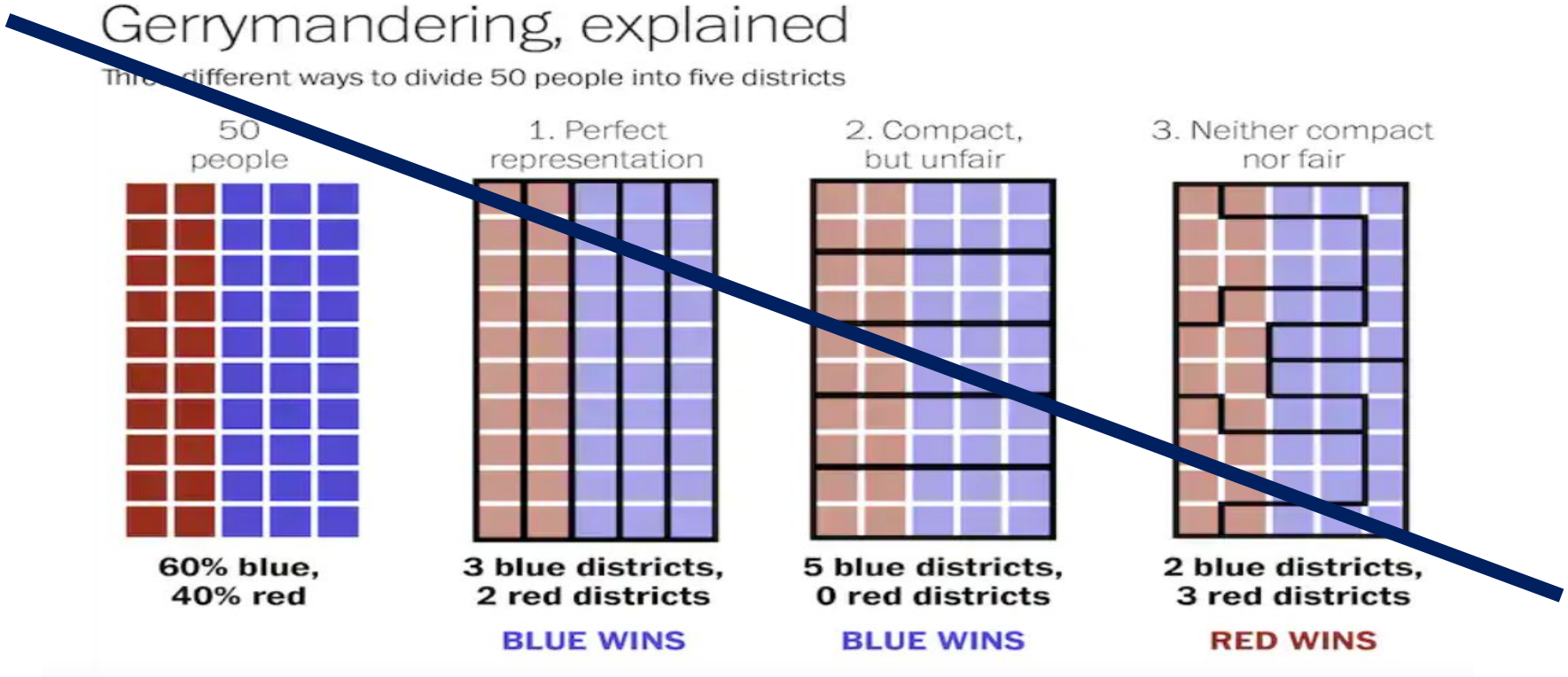


Image from Washington Post; slash added by Auditor's Office

Multnomah County Redistricting

County Charter provides clear direction about how to apportion Commissioner Districts

- Transparent
- Fair, equal representation

Multnomah County Redistricting

Current districts



Image from Multnomah County

Multnomah County Charter

3.15 Apportionment of Commissioner Districts

Not later than August 1 in the year of the official release of each federal decennial census for Multnomah County, the auditor shall determine the population distribution among the commissioner districts specified by this charter. If the population of any commissioner district is more than 103 percent of the population of any other commissioner district, the auditor, in consultation with the Multnomah County elections division, shall prepare and present to the board of county commissioners not later than August 1, a plan for modifying the boundaries of the districts so that the population of no commissioner district will be more than 102 percent of the population of any other commissioner district, notwithstanding the delineation of commissioner districts by this charter. The board of county commissioners shall, within 45 days of the submission of the report, alter the boundaries of the commissioner districts as necessary by ordinance to provide for an approximately equal population distribution. Change in boundaries of the districts shall not affect taking of office of a commissioner-elect with respect to the term of office for which elected prior to the adoption of the reapportionment. The auditor shall, as nearly as possible, retain the general geographic characteristics of districts established by this charter.

Multnomah County Charter

3.15 Apportionment of Commissioner Districts

Who?

County Auditor

Does what?

- Determines the population distribution among the Commissioner Districts
- Based on results of the decennial U.S. Census

Multnomah County Charter

3.15 Apportionment of Commissioner Districts

Is the population of any Commissioner District more than 103% of the population of any other Commissioner District?

No = no redistricting

Yes = redistricting

Multnomah County Charter

3.15 Apportionment of Commissioner Districts

Who?

County Auditor, in consultation with Multnomah County Elections

Does what?

Prepares a plan for modifying district boundaries



Image from Multnomah County

Multnomah County Charter

3.15 Apportionment of Commissioner Districts

The Plan

- Modifies district boundaries so that the population of no Commissioner District is more than 102% of the population of any other Commissioner District
- Charter directs the Auditor to, as nearly as possible, retain the general geographic characteristics of Commissioner Districts

Multnomah County Charter

3.15 Apportionment of Commissioner Districts

When?

The Auditor must present the plan to the Board of County Commissioners no later than August 1 in the year that the decennial U.S. Census is released

- 2021
- Usually the county can access results in February of the release year

Multnomah County Charter

3.15 Apportionment of Commissioner Districts

Who?

Board of County Commissioners

Does what?

Within 45 days of receiving the Auditor's report, the Board alters the boundaries of Commissioner Districts as necessary by ordinance

Multnomah County Redistricting

We'll show our work!

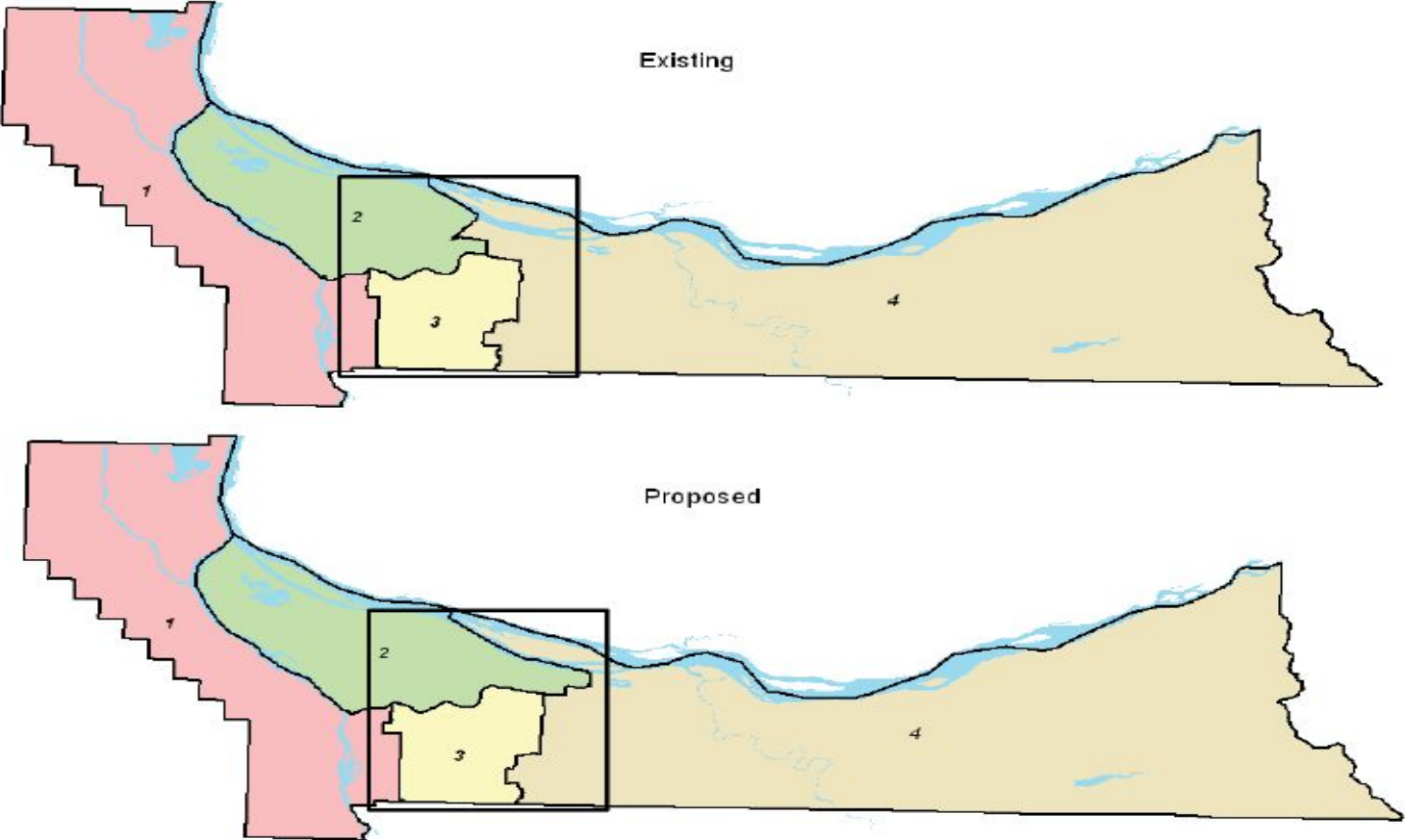


Image from 2011 redistricting plan

Multnomah County Redistricting

Exhibit 4. Population Variance in Existing Districts

Commissioner District (Representative)	2010 Population
District 1, West (Kafoury)	186,190
District 2, North (Smith)	173,315
District 3, Central (Shiprack)	181,220
District 4, East (McKeel)	194,609



District 4 was 112% of the population of District 2, more than the 103% threshold.

Multnomah County Redistricting

Exhibit 6. Populations of Proposed Districts

District	2010 Population	Percent of Smallest District	Percent Over (Under) Ideal
District 1, West	183,481	100.356%	(0.19%)
District 2, Central	184,228	100.764%	0.21%
District 3, East	182,831	100.000%	(0.55%)
District 4 East	184,794	101.074%	0.52%

Multnomah County Redistricting

Will my office propose redrawn districts in 2021?

It's very likely.

Multnomah County Redistricting

2001: District 4 was 22.4% larger than District 2, which mandated redistricting

2011: District 4 was more than 3% larger than any other district

- 12.3% larger than District 2
- 7.4% larger than District 3
- 4.5% larger than District 1

Multnomah County Redistricting

We will obtain suggestions from the Elections Division, which in the past have included:

- Avoid using boundaries that could change
 - City or school districts
- Use state legislative boundaries as a guideline, where possible

Multnomah County Redistricting

We will consider criteria established in Oregon’s Congressional and Legislative Districts; Reapportionment Law (ORS 188.010), where applicable.

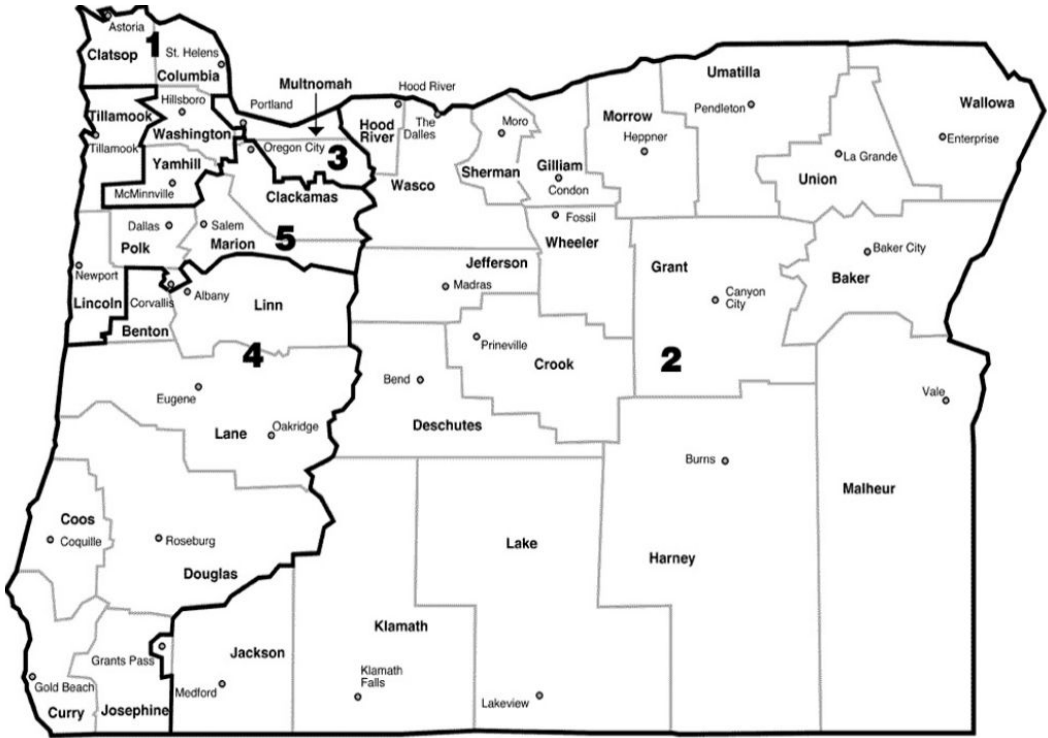


Image from Oregon Blue Book

Multnomah County Redistricting

State criteria for congressional & legislative districts:

- Contiguous
- Equal population
- Use existing geographic or political boundaries

Multnomah County Redistricting

State criteria for congressional & legislative districts:

- Not drawn for the purpose of diluting the voting strength of any language or ethnic minority group

This is also central to the U.S. Voting Rights Act.

Multnomah County Redistricting

- Non-controversial
- Population based
- Transparent
- Focused on providing equal representation

Questions?

2021 Legislative Agenda Preview

December 3, 2020



President-elect Biden claimed victory, President Trump has yet to concede

- December 8th – Safe Harbor deadline
- December 14th – Electoral College cast ballots in each state
- December 23rd – Results of Electoral College ballots due
- January 3rd – 117th Congress Sworn In
- January 6th – Joint Sessions of Congress to Certify Electoral College results
- January 20th – Inauguration Day

Election Litigation

- The Trump Campaign has filed at least 40 lawsuits alleging fraud or wrongdoing in the administration and tabulation of the election results.
- The majority of these suits have been dismissed, though the Trump Campaign has been appealing many, hoping to reach the Supreme Court.
- Each state where President Trump has challenged the outcome (AZ, GA, MI, NV, PA, and WI) have certified their results.

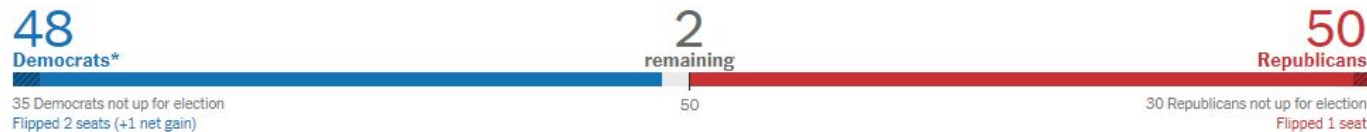
Transition Timeline

- Processes have begun for President-elect Biden
- Biden Transition Team website has been posted: <https://buildbackbetter.com/>
- President Trump has not acknowledged defeat, but the General Services Administration has given the Biden transition team access to the federal suite of resources to progress with transition.

2020 General Election Results – Congressional

Control of the U.S. Senate is still undetermined

- Georgia will have two run offs on January 5, 2021
- 50/50 split in U.S. Senate possible
- Two Independents, Bernie Sanders (VT) and Angus King (ME), caucus with the Democrats



Democrats maintain control of the U.S. House of Representatives

- Currently Democrats have lost 10 seats from their majority
- Currently 4 races yet to be called
- Expect 8-10 net seat loss for Democrats



Oregon's Congressional Delegation

- **Senator Ron Wyden**
 - Ranking Member, Finance Committee
 - Budget Committee
 - Energy and Natural Resources Committee
 - Select Committee on Intelligence
 - Joint Committee on Taxation
- **Senator Jeff Merkley**
 - Appropriations Committee
 - Environment and Public Works Committee
 - Budget Committee
 - Foreign Affairs
- **Congresswoman Suzanne Bonamici**
 - Education and the Workforce
 - Science, Space, and Technology
 - Select Committee on Climate Crisis
- **Congressman-elect Cliff Bentz**
 - To be sworn in on January 3rd, 2021
- **Congressman Earl Blumenauer**
 - Ways & Means Committee
- **Congressman Peter DeFazio**
 - Chair, Transportation & Infrastructure Committee
- **Congressman Kurt Schrader**
 - Energy & Commerce Committee

End of 116th Congress & Lame Duck Session

■ Lame Duck Session

- Congress reconvened November 9th
- Continuing Resolution expires on December 11th
- COVID-19 Relief Legislation
- Tax Extenders Legislation
- Water Resources Development Act (WRDA)
- National Defense Authorization Act (NDAA)

Transition to a New Administration & Congress

- Cabinet Appointments
- Repeal of Trump Administration Executive Orders and Reversal of Regulations
- COVID-19 Pandemic Response
- Racial Equity
- Infrastructure Package
- Affordable Care Act
- Addressing Housing and Homelessness
- Climate Change

2020 Census & Multnomah County

East County Issue Forum

December 3, 2020

Marc Czornij, Partnership Specialist – Oregon, US Census Bureau

[2020CENSUS.GOV](https://2020census.gov)

Shape
your future
START HERE >

United States[®]
Census
2020

2020 CENSUS DATA COLLECTION OPERATIONS

- **Self-Response**
March 12 - October 15
Originally March 12 - July 31
- **Group Quarters (E-Response & Paper Enumeration)**
April 2 - September 3
Originally March 12 - July 31
- **Group Quarters (In-person)**
July 1 - September 3
Originally April 2 - June 5
- **Mobile Questionnaire Assistance**
July 10 - October 15
Originally March 30 - July 31
- **Non-Response Follow-up**
Early August - October 15
Originally May 13 - July 31
- **Enumeration of Transitory Locations**
September 3 - September 28
Originally April 9 - May 4
- **Service Based Enumeration**
September 22 - September 24
Originally March 30 - April 1
- **Outdoor count of people experiencing homelessness**
September 23 - September 24
Originally March 31 - April 1

PARTNERING WITH MULTNOMAH COUNTY

- Serving as the Bureau's local liaison to the county & the Complete Count Committee
- Providing regular updates and information on operations, procedures, and progress
- Supplying outreach materials, promotional items, messaging and digital resources
- Conducting presentations at meetings with county departments and other partners
- Connecting Multnomah County to staff at the Portland Area Census Office
- Sharing contacts to further outreach across the county

THANK YOU!



Marc Czornij, Partnership Specialist – Oregon, US Census Bureau

marc.r.czornij@2020census.gov

Evaluating Census 2020 in Oregon: November

Process, Outcomes, and Looming Threats

Ethan Sharygin and Charles Rynerson

Population Research Center

College of Urban and Public Affairs

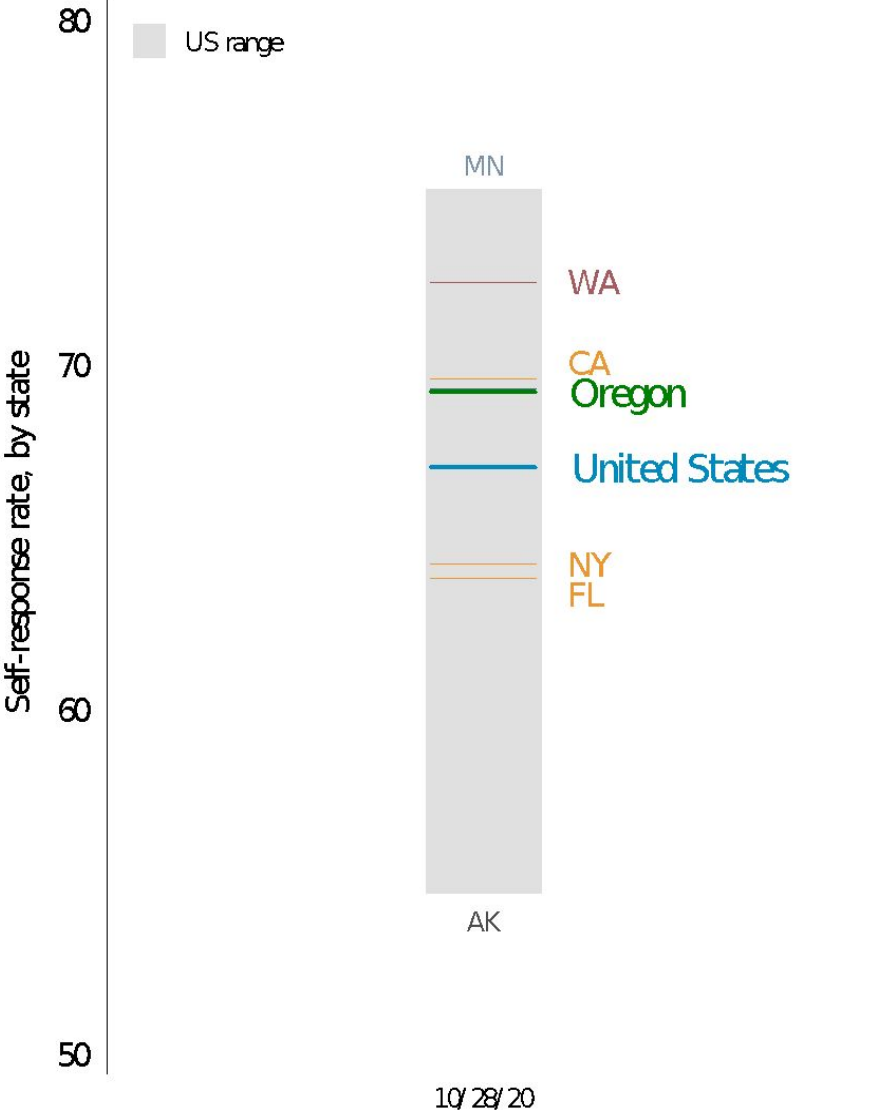
Portland State University

Multnomah County Census Board

December 1 2020



Comparing Oregon after Census 2020 and Census 2010

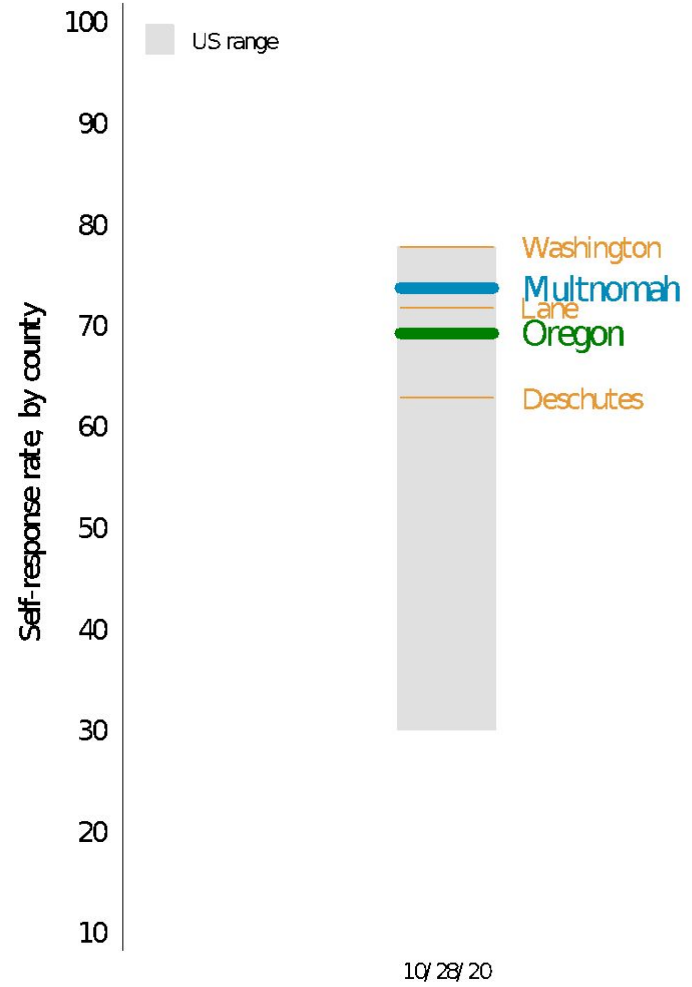


Statewide
Self-response:
69.2% (+2.3 pp
from 2010)

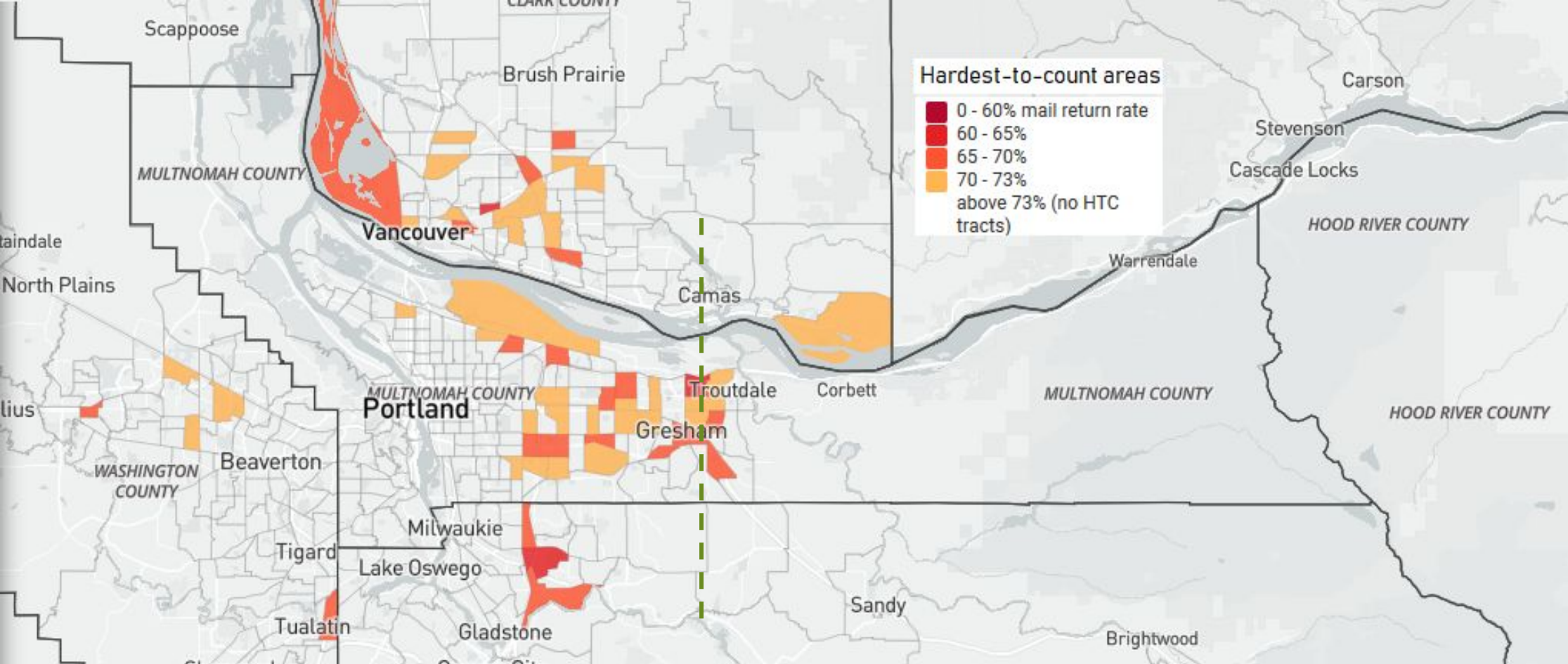
#21 of 51

Countywide
Self-response:
73.7% (+3.2 pp
from 2010)

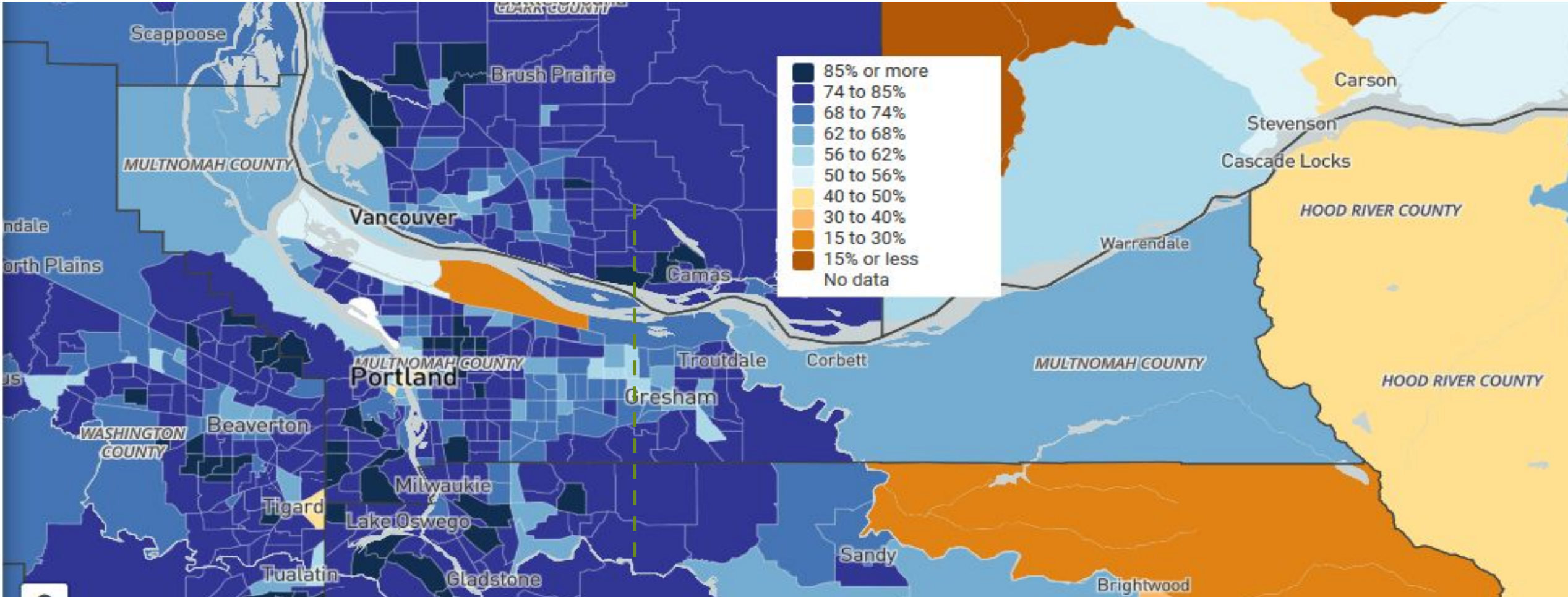
#4 of 36



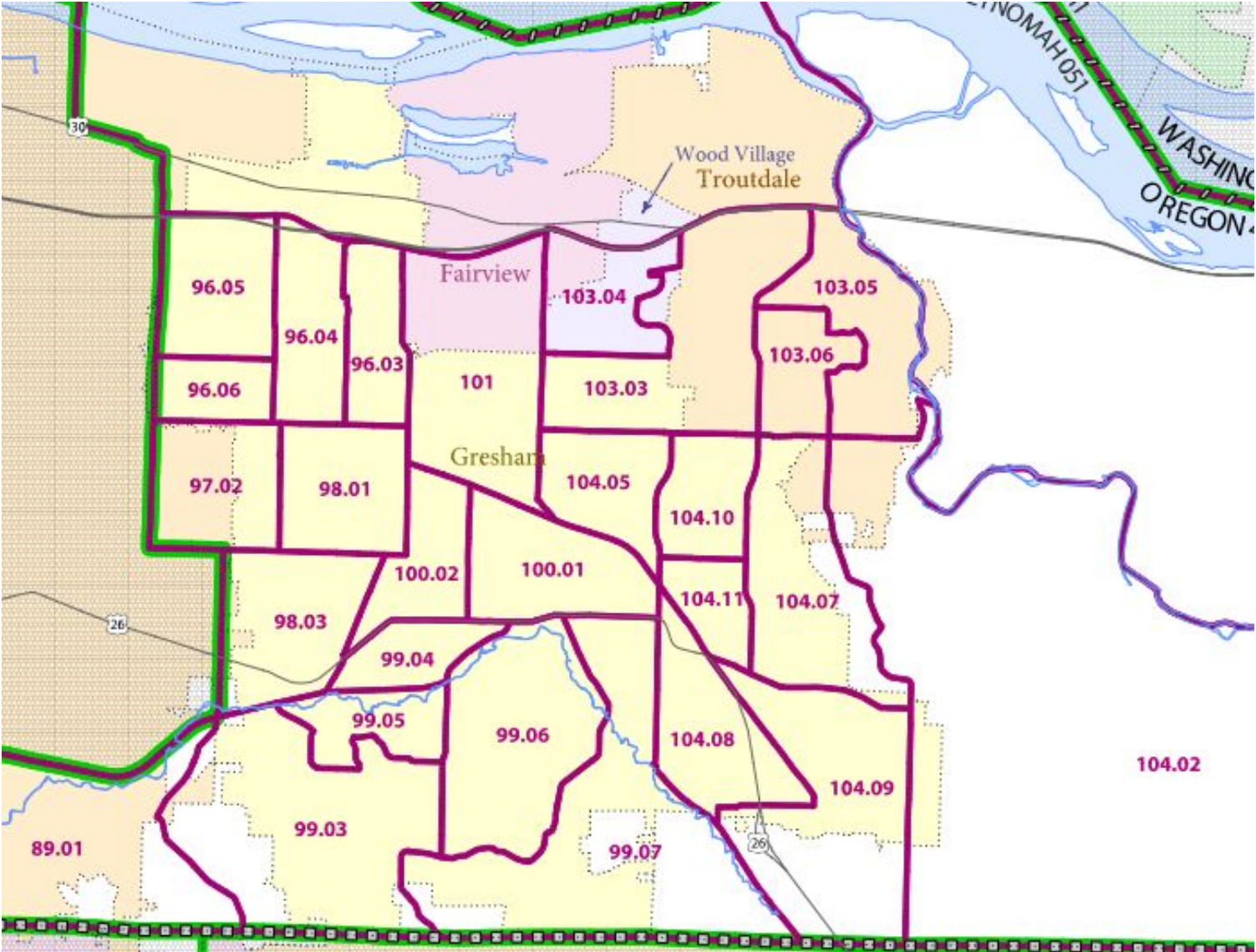
2020 Census Results for Multnomah County



2020 Census Results for Multnomah County



Wood Village



Wood Village

OREGON



Tract 103.04 in Multnomah County, OR

ZOOM TO

CENSUS DETAILS FOR TRACT 103.04

SHARE YOUR MAP

Local response rate:

66.2%

Self-response pre-NRFU*

+5.0%

Self-Response during NRFU

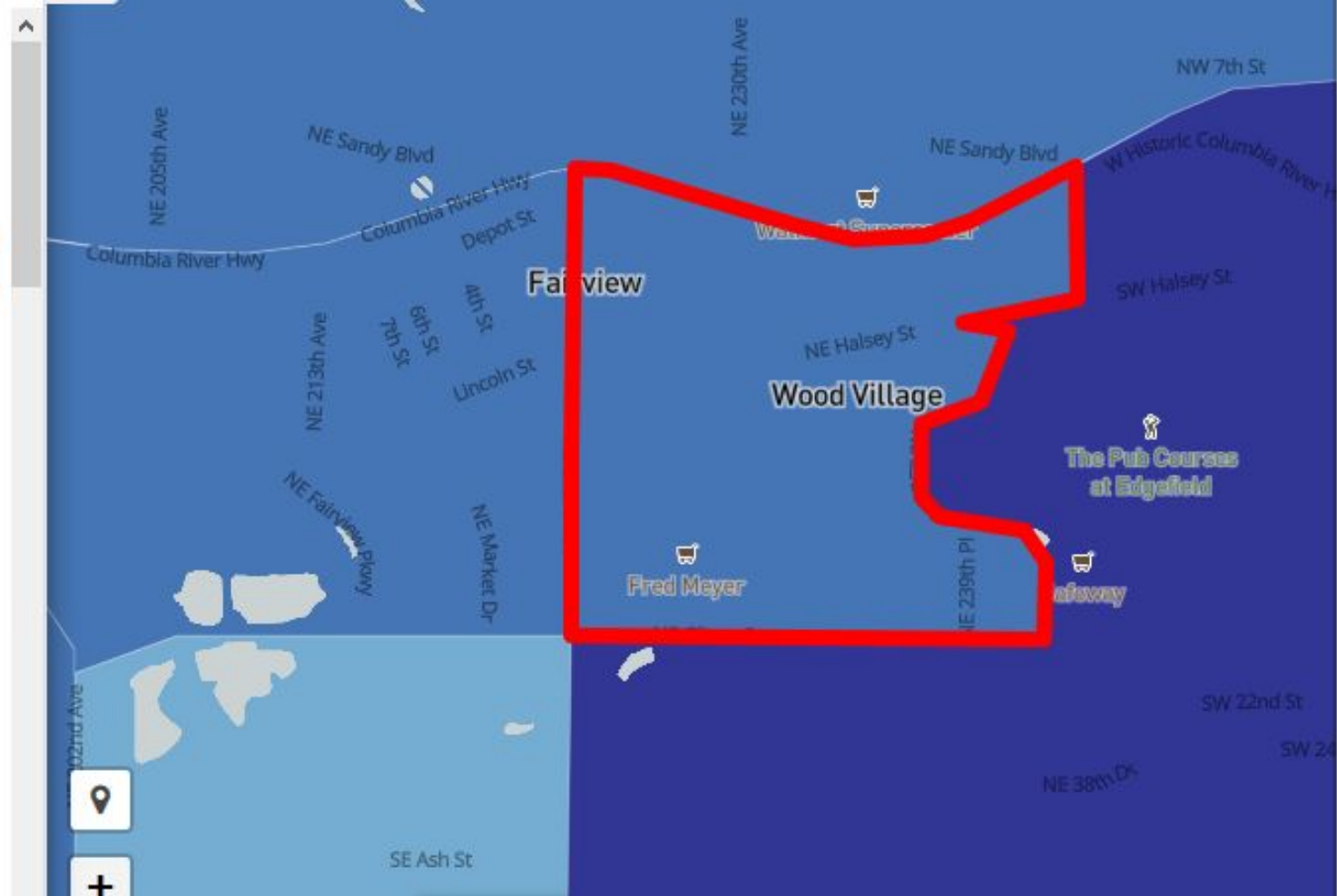
71.2%

Self-response as of 10/17

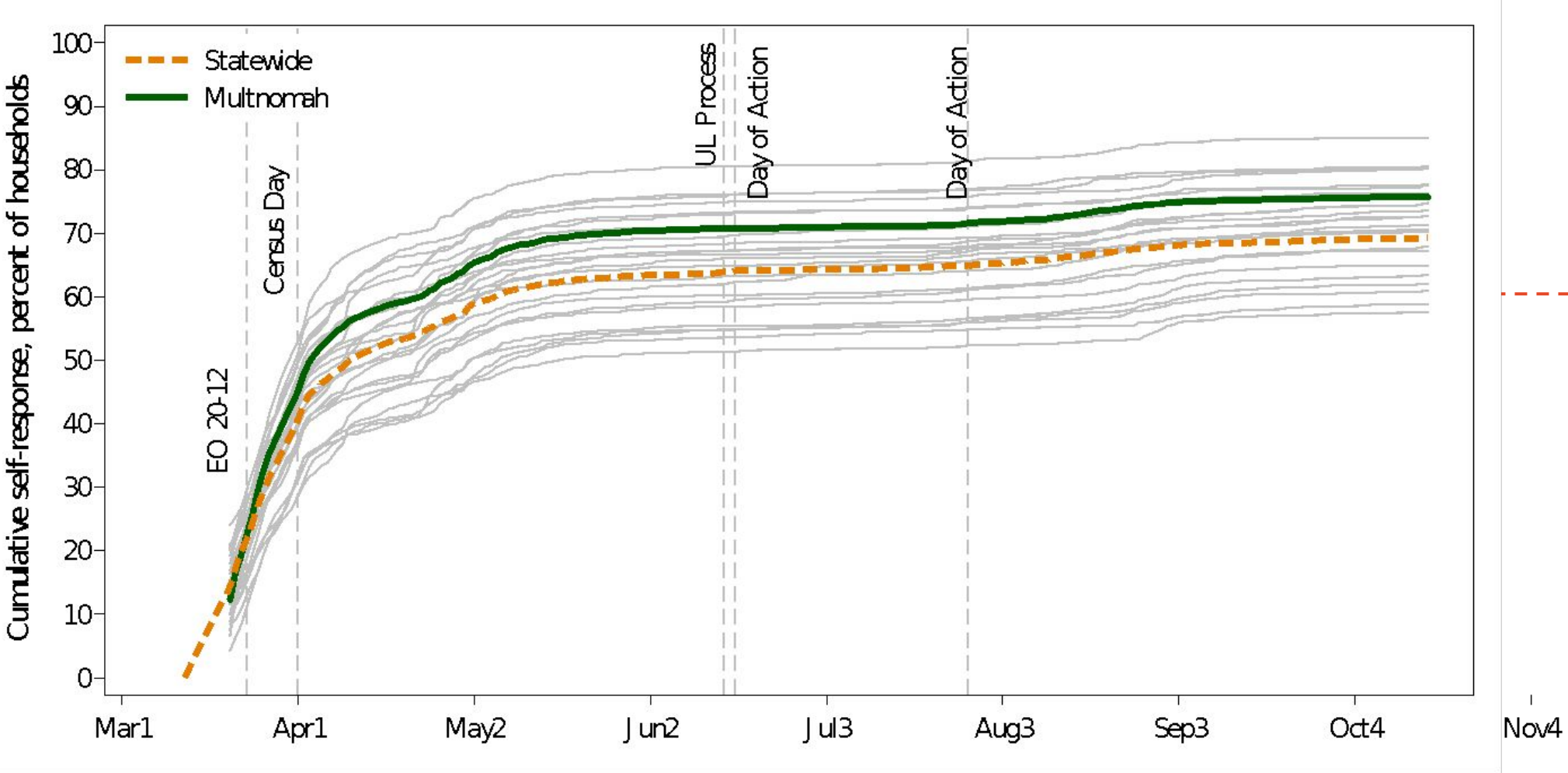
58.3%

2010 final self-response

* **NRFU = nonresponse followup**, the Census Bureau's door-knocking operation to enumerate households in-person or via other records, for households that did not fill out the census form on their own.



Timing of self-response rates in relation to important events



Census 2020 Data Releases

[1] Apportionment:

December 31, 2020 state resident total populations reported. **Likely to be changed to January 2021.**

[2] Redistricting:

March 31, 2021 deadline for block level redistricting data

[3] Demographic Profiles & Characteristics File

Spring 2021 Demographic Profiles for Places (cities)

Summer 2021 Demographic and Housing Characteristics File (replaces Summary File 1)

[4] Challenges

October 2021 - June 30, 2023: Count Question Resolution Operation (CQR) -- Coverage challenges (boundaries, geocoding, or unit counts).





East County Issue Forum | 2020 Census

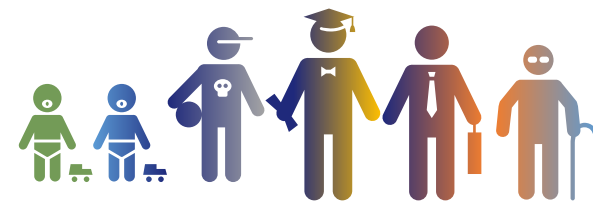
Shawneen O'Brien-Lee

Governor Kate Brown's Office of Diversity, Equity and Inclusion

December 3, 2020

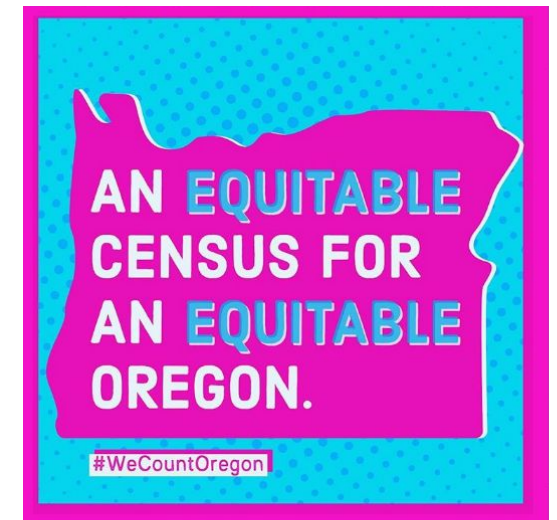
What was different for Oregon in 2020?

- Highly politicized census
- COVID-19 global pandemic
- First decennial census that could be completed online
- First time Oregon officially formed a Complete Count Committee
- First census that the State specifically set aside funding for outreach to Hard-to-Count communities



Hard-to-Count Communities and Populations:

- Include Black, Latino/Latina/Latinx, Asian, Pacific Islander, and Tribal and Native American communities, children under 5, rural residents, immigrants, refugees, people experiencing homelessness, and others
- These communities have been historically undercounted and underrepresented in census enumeration
- An accurate and complete count of *all* of Oregon's residents means fair political representation, distribution of public resources, and necessary data for equitable policymaking





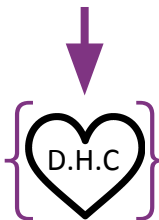
CEFCO

Hard to Count Campaign



\$7.5M
set aside by
the State

Fiscal Agent: United Way of the Columbia-Willamette



We Count Oregon



Funding used for various field operations and media campaigns specifically focused on Hard-to-Count communities.

Oregon Complete Count Committee & Subcommittees

- 2020 Census advisory body to Governor Kate Brown and the State of Oregon
- First convened in April 2019
- The OCCC recommended strategies that safeguarded and promoted the 2020 Census
- Information collection and sharing



Thank you!

Please feel free to reach out with any questions:

Shawneen O'Brien-Lee,
Census Project Coordinator
shawneen.obrien-lee@oregon.gov



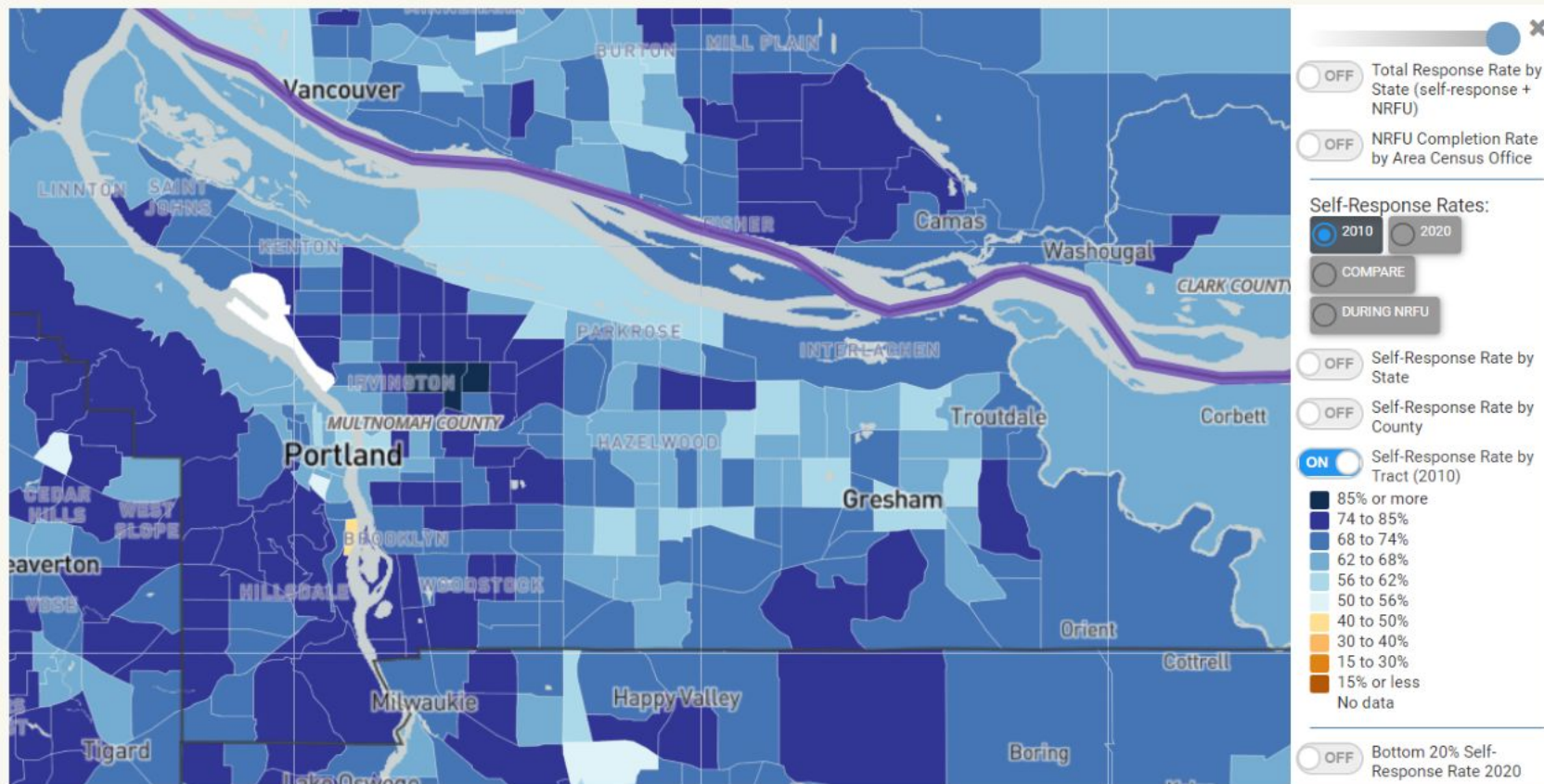
2020 CENSUS OUTREACH

COMPLETE COUNT EFFORTS

HARD TO COUNT CENSUS TRACTS

MULTCO COMPLETE COUNT COMMITTEE

ACTIVATING PARTNERS AND DEPARTMENTS



Note: This tracker uses real time data to identify areas needing extra advocacy

MULTCO PROCESS & RATIONALE



OUTREACH PRE COVID-19

- Mobile Fleet
- Real Time Census Assistance
- Field Plans & Collaboration with Community Based Organizations



ADJUSTING TO CHANGES

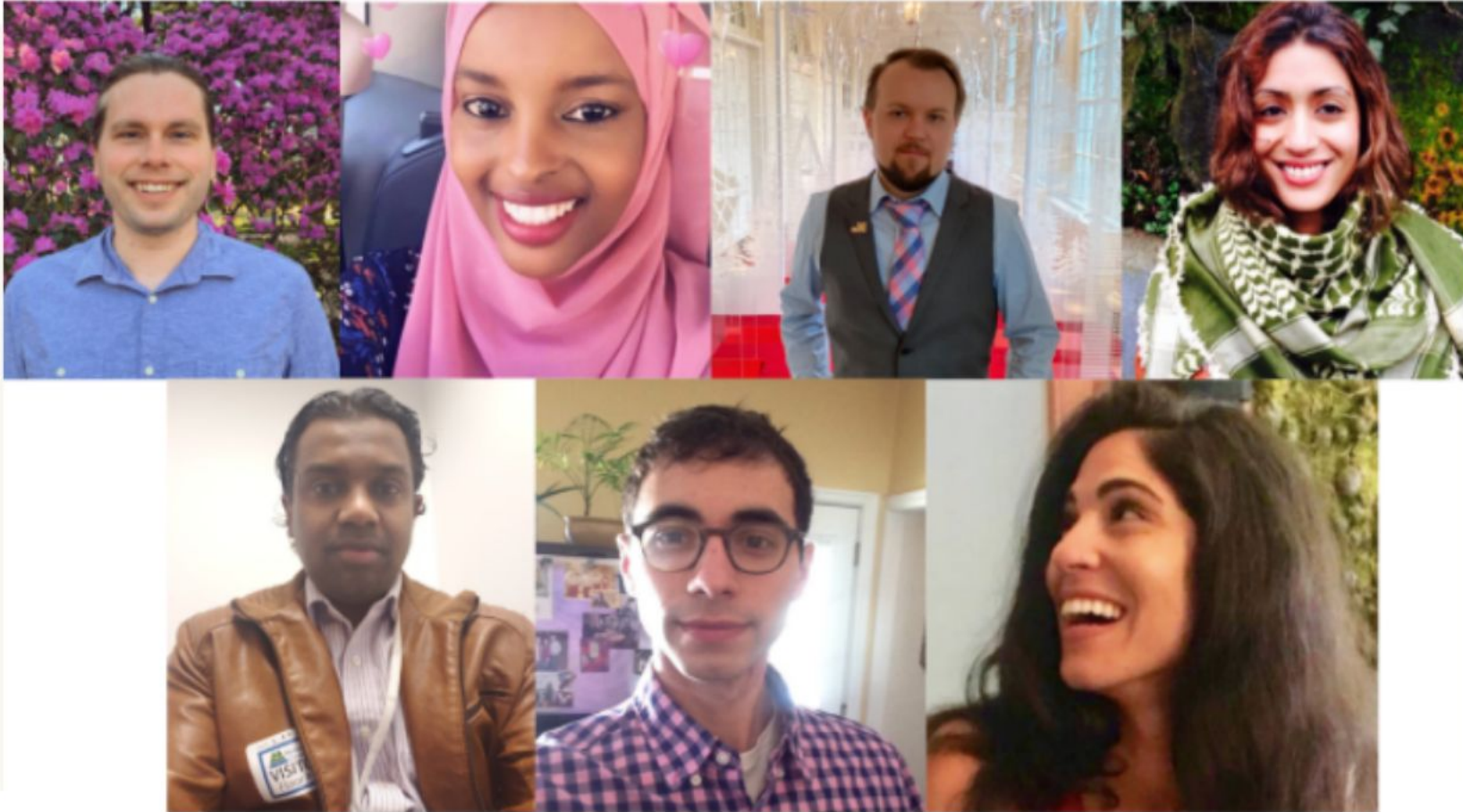
- Digital Outreach Strategies
- Addressing Community Needs



NEW PLANS & PRIORITIES

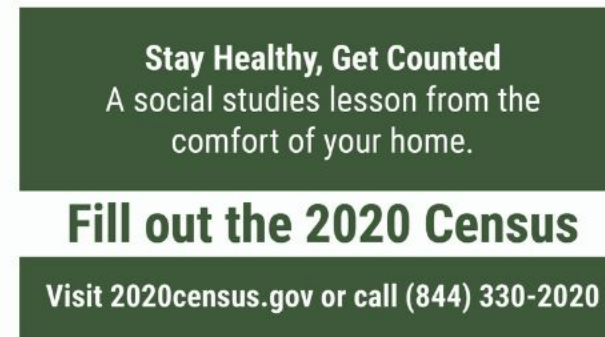
- Culturally Relevant Outreach
- Food Insecurity
- Public Facing Promotion

MULTNOMAH COUNTY CENSUS TEAM



MULTNOMAH COUNTY HTC OUTREACH STRATEGIES

- Outreach Models
- Adjusting to the political climate and COVID-19 safety procedures
- Partnering and developing food and product distribution programs
- Serving and purchasing from local & BIPOC communities.



VEHICLES OF HARD TO COUNT OUTREACH

- Grassroots organizing strategies
- Priorities: local businesses, culturally appropriate information in chosen locations
- Food insecurities and supply support

**You count,
no matter
where you live.**





TEXT CAMPAIGNS & SCHOOL DISTRICTS

- Texted 106,000 individuals in hard to count zip codes
- Worked with (Portland Public, Centennial, Corbett, David Douglas, Gresham-Barlow, Parkrose, and Reynolds) to send district wide text messages in all major languages to families

PUBLIC FACING PROMOTION

TriMet Bus & Bench Ads

- 4,131,000 total estimated impressions

Billboards:

- 34 different billboard locations in HTC zip codes over 64 days
- 19,083,659 total impressions



CLOSING REMARKS



Multnomah County 2020 Census Partners Video



THANK YOU TO OUR 2020 CENSUS PARTNERS

