

A stylized graphic on the left side of the slide. It features two green mountain peaks of different heights. Below the mountains is a green wavy line representing a shoreline or a body of water. At the bottom is a blue wavy line representing water. The entire graphic is composed of solid-colored shapes with no internal details.

Transportation Division Overview for CBAC

Presented by: Jon Henrichsen,
Jessica Berry & Chet Hagen

Department of
Community Services
December 18, 2025

Department of Community Services: **Transportation Division**

Agenda

- Transportation Division Overview
- FY25-26 Review
- Special Focus - Major Plans:
 - Transportation Safety Action Plan
 - Stormwater Master Plan
 - Design and Construction Manual
 - Bridge Capital Improvement Plan
- Capital projects
 - Fy 2027 Projects
 - Earthquake Ready Burnside
 - One Time Only (General and Lottery Funds) Ask - ADA Ramps
- Questions

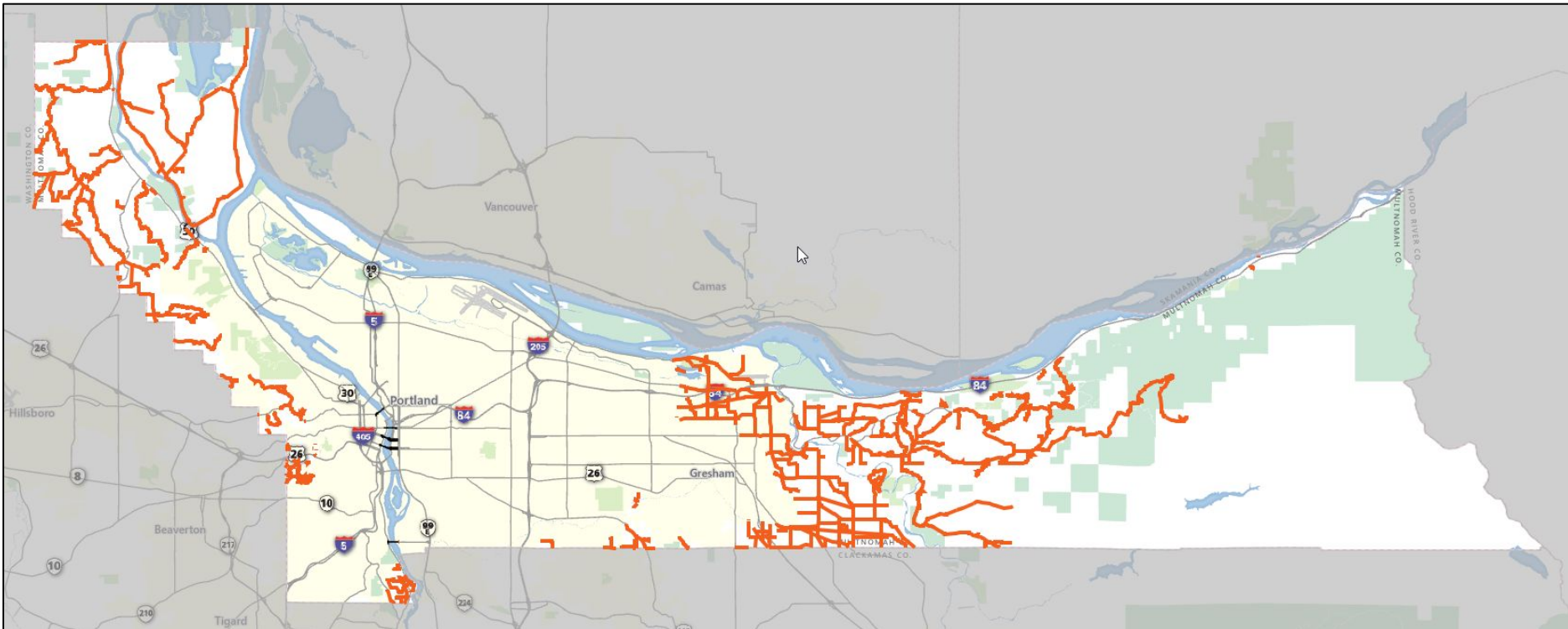


DCS Transportation Division: Asset Responsibilities

Willamette River Bridges



Multnomah County Roads



Department of Community Services: **Transportation Division**

ROADS

270 miles



38% preventive
26% renewal
36% replacement

CULVERTS

1,690



7% renewal
1% replacement
44% unknown

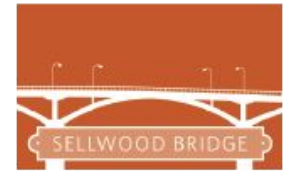
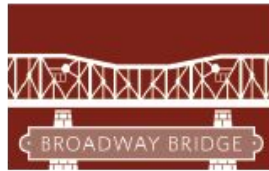
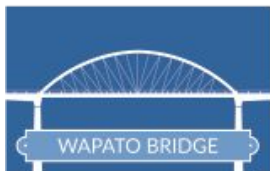
SMALL BRIDGES

23



40% preventive
40% renewal
20% replacement

WILLAMETTE RIVER BRIDGES



Maintenance estimates over the next 20 years

\$720M for renewal and \$120M for preventive



DCS Transportation Division: Organizational Chart

FY 2026 Totals

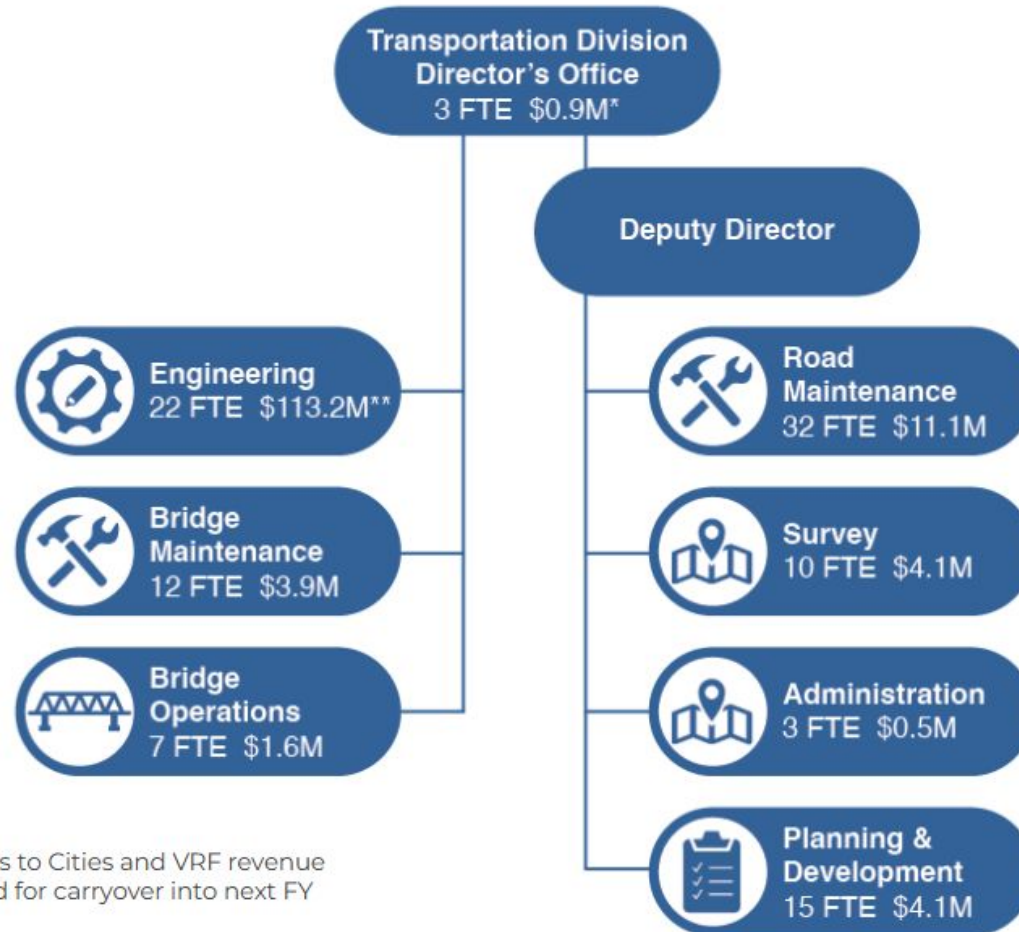
Budget: \$217.3M*

FTE: 103.65

Sellwood: \$8.6M

EQRB: \$33.0M

Pass-through: \$36.3M



* Includes pass-through payments to Cities and VRF revenue

** Includes unallocated funds held for carryover into next FY



DCS Transportation Division: Funding



GAS TAX

County (1976)
State (2017)



VEHICLE REGISTRATION FEE (VRF)

County (bridges)
State (all)



GRANTS

Federal and State grants
Federal Appropriations
State Funding (e.g. lottery)



COUNTY GENERAL FUND

ADA Ramps



DCS Transportation Division: Program Offers

Dedicated Funds and Grants

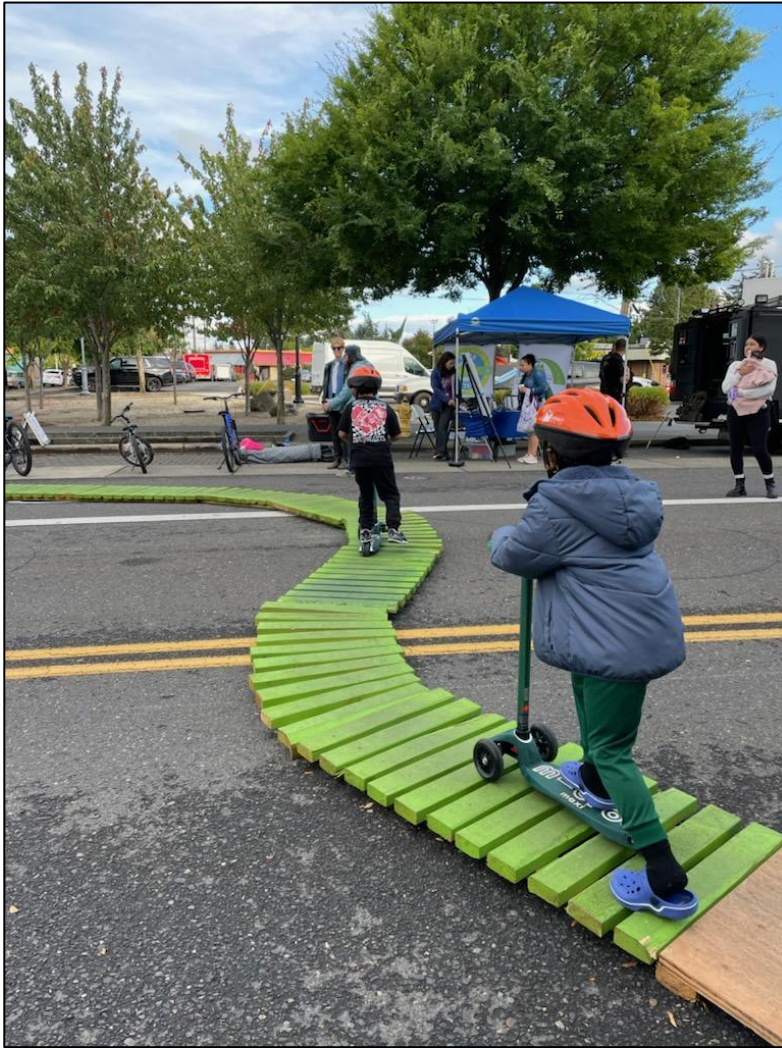
Transportation Division is responsible for 8 program offers:

- **LEAD - Transportation Administration**
 - Division Director's office, oversight and direction setting for the Division
- **PLAN - Transportation Planning**
 - Transportation Planning, Development review, Water Quality, and Transit program
- **BUILD - Transportation Capital**
 - All road and Willamette River bridge capital projects
- **MAINTAIN and OPERATE**
 - Road and Bridge Maintenance, Road and Bridge Engineering, Bridge Operations
- **SURVEY - County Surveyor's Office**
 - Incorporates all of the County Surveyor functions
- **ADA compliant curb ramp replacement project**
 - 10 year timeline for replacing all non-compliant ramps
- **Earthquake Ready Burnside**
 - Replace Burnside Bridge with one that is seismically Resilient

All programs are balanced and operate on dedicated revenues



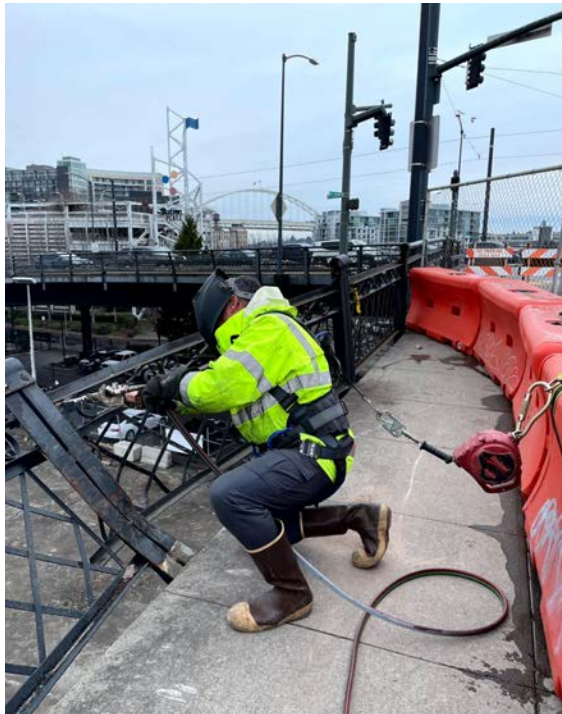
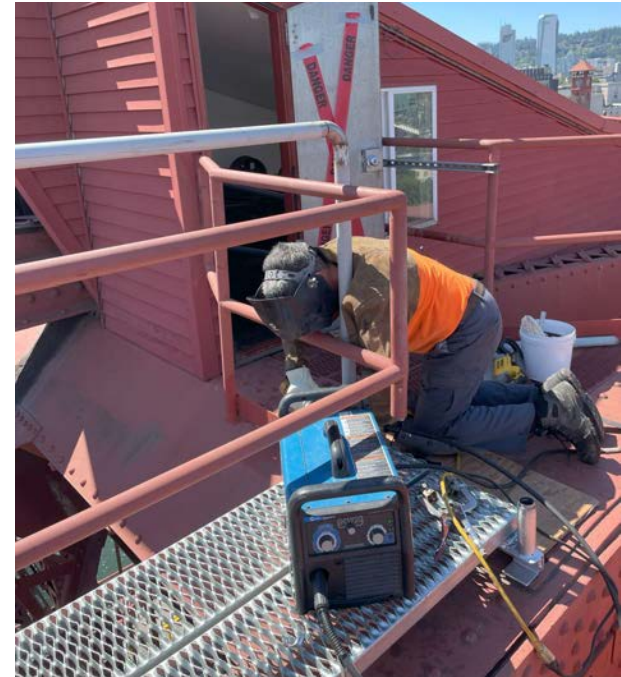
DCS Transportation Division: Safe Routes to School, Transit, Water Quality



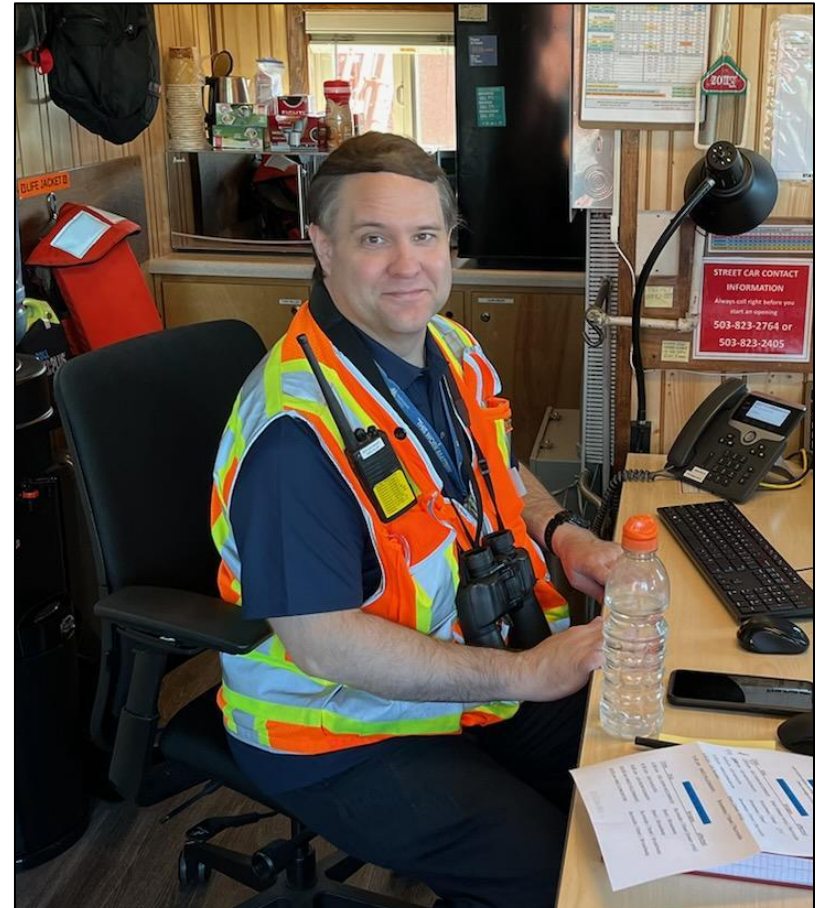
DCS Transportation Division: Survey



DCS Transportation Division: Bridge Maintenance



DCS Transportation Division: Bridge Operations



DCS Transportation Division: Road Maintenance



DCS Transportation Division: Engineering & Capital



A Transportation System for the Future

What Drives Us?



DCS Transportation Division: Purpose Statement

The Transportation Division provides safe, accessible, and sustainable transportation services that improve outcomes for community health, mobility, and equity.



DCS Transportation Division: Policy Framework

Establishes policy goals and objectives to provide safe, accessible, and sustainable transportation services that improve outcomes for community health, mobility, and equity.



CLIMATE

Reduce emissions
and increase
resilience



RESILIENCE

Equitable community
preparation for recovery
from natural disasters



HEALTH & SAFETY

Provide a system that
promotes community
health and safety



EQUITY

Provide equitable
transportation access,
impacts, burdens and
benefits



MOBILITY & ACCESS

Supply options for
people to access
destinations and critical
services



ASSET STEWARDSHIP

Manage County assets
to earn and uphold
public trust



What have we accomplished this year?

FY 25/26 Year in Review



DCS Transportation Division: **FY25-26 Year in Review**

Road Maintenance Video Series

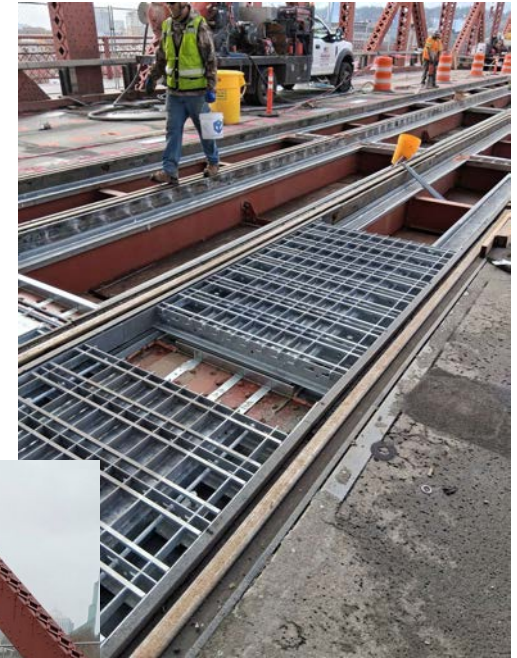
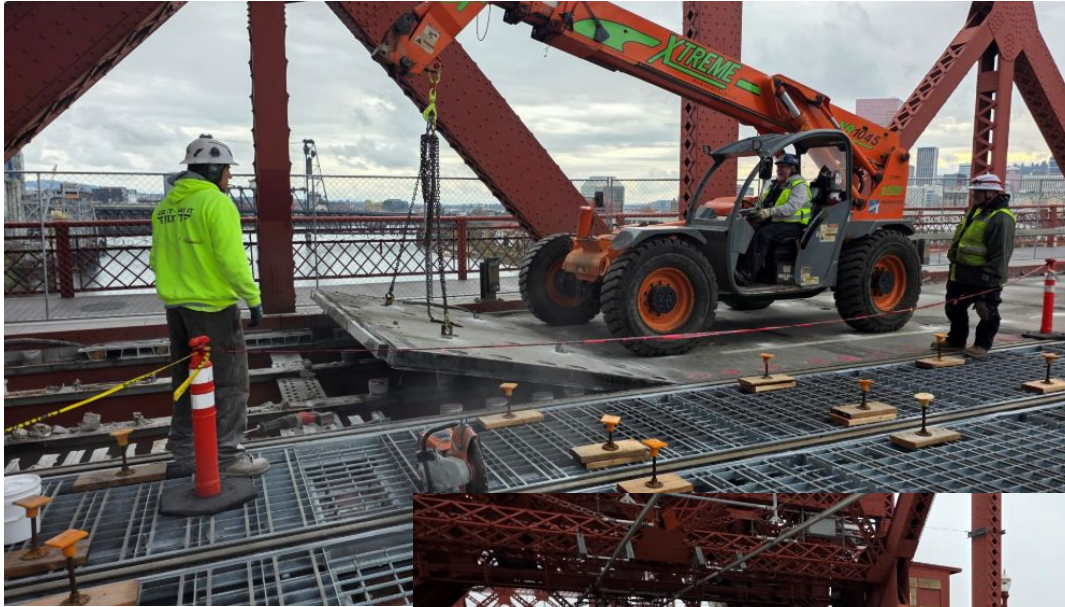


[Road Maint Video](#)



DCS Transportation Division: FY25-26 Year in Review

Broadway Deck Replacement Project



DCS Transportation Division: FY25-26 Year in Review

Morrison Bridge Strengthening Project



Refurbishing of the existing motor

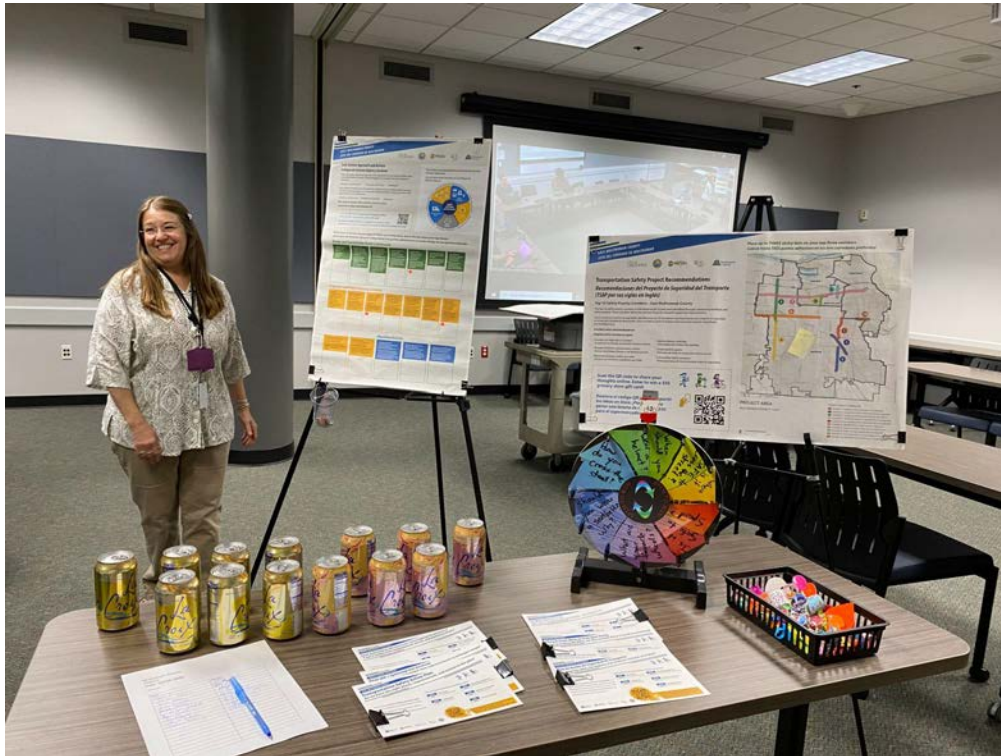


Installation of titanium bars to increase the strength of the beam



DCS Transportation Division: FY25-26 Year in Review

Community Engagement



DCS Transportation Division: **FY25-26 Year in Review**

Stark Street Bridge Emergency Repair



What does the future look like?

SPECIAL FOCUS: **Major Plans**



DCS Transportation Division: Major Plans

Transportation Safety Action Plan

- Project includes County and cities of Fairview, Gresham, Troutdale and Wood Village
- Funded by Metro and a federal Safe Streets for All grant

EAST MULTNOMAH COUNTY TRANSPORTATION SAFETY ACTION PLAN TIMELINE

SUMMER FALL

Phase 1: Listen & Learn

Jun - Nov 2024

Community Storytelling +
Policy and Safety Analysis

SPRING SUMMER

Phase 2: Reflect & Dive In

Dec - Jul 2025

Develop and
Share Transportation
Safety Improvement
Recommendations

SUMMER

Phase 3: Refine

Jul - Oct 2025

Prepare Draft Plan

FALL

Final Plan Complete

Dec 2025

WE ARE HERE



East Multnomah County

Transportation Safety Action Plan

Winter 2025



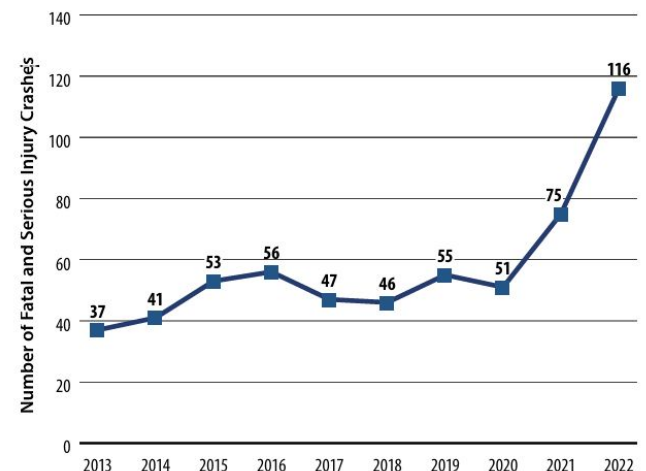
DCS Transportation Division: Major Plans

Transportation Safety Action Plan

- More than 3,000 community members shared their experiences walking, rolling, biking, driving, and using transit in East Multnomah County
- We analyzed over 9,000 crash records (2013-2022) to better understand where and how transportation safety can be improved in East Multnomah County.



Fatal and Serious Injury Crashes in East Multnomah County, 2013–2022



Stormwater Master Plan

- Project started in 8/25 to develop our first master plan
- Strategy for our stormwater infrastructure
- Considers quantity, quality and will provide us with a capital project list



Survey

Oct 31 - Jan 27



Draft Plan

Late June 2026



Final Plan

Late Sept 2026



**Multnomah
County**



**Stormwater
Master Plan**



DCS Transportation Division: Major Plans

Stormwater Master Plan

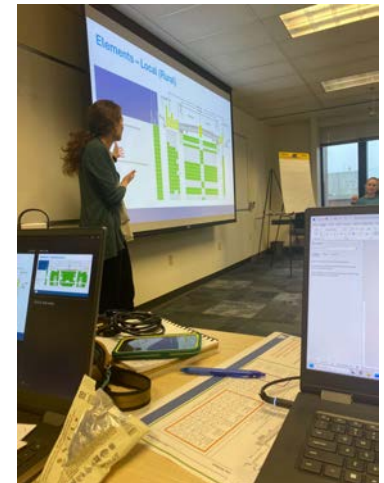
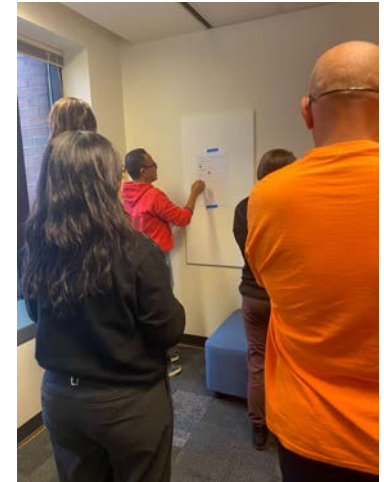
- Focus areas:
 - Fairview
 - Wood Village
 - Troutdale
 - Dunthorpe-Riverdale
 - Green Hills/Bridlemile
- Assess current condition and look to future performance accounting for changes in our climate



DCS Transportation Division: **Major Plans**

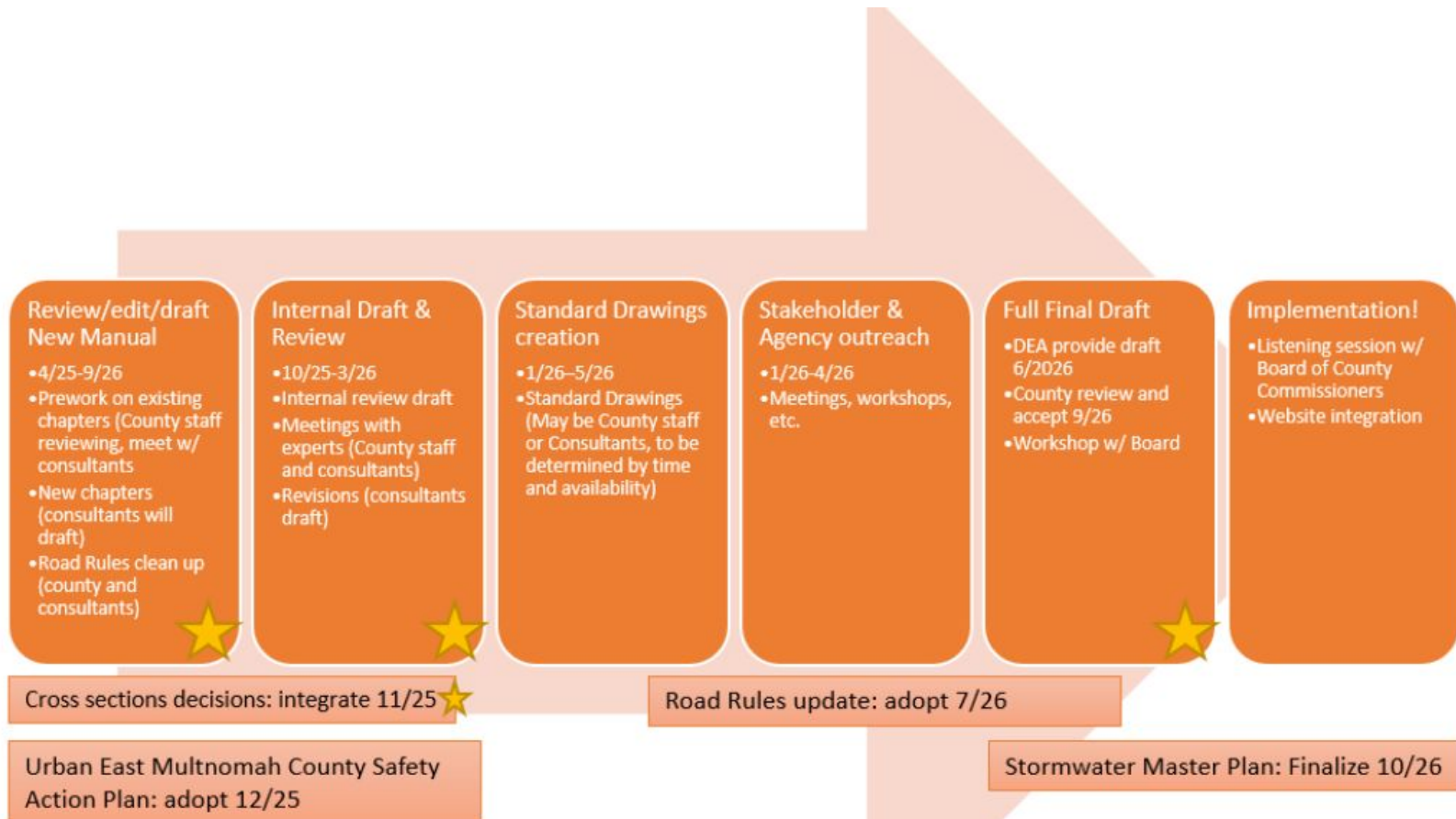
Design and Construction Manual

- Update all standards to be consistent with state and federal law
- Develop roadway cross sections to improve safety for all modes, integrate recommendations from the TSAP
- Simplify internal and external processes so staff, consultants, and applicants understand what is allowed on county roadways



DCS Transportation Division: **Major Plans**

Design and Construction Manual



DCS Transportation Division: **Major Plans**

Bridge Capital Improvement Plan (CIP)

- Identifies a 20-year program of prioritized capital projects and associated funding
- Facilitates long term planning for preservation, rehabilitation and replacement of the County's Willamette River Bridges
- Last update was in 2015



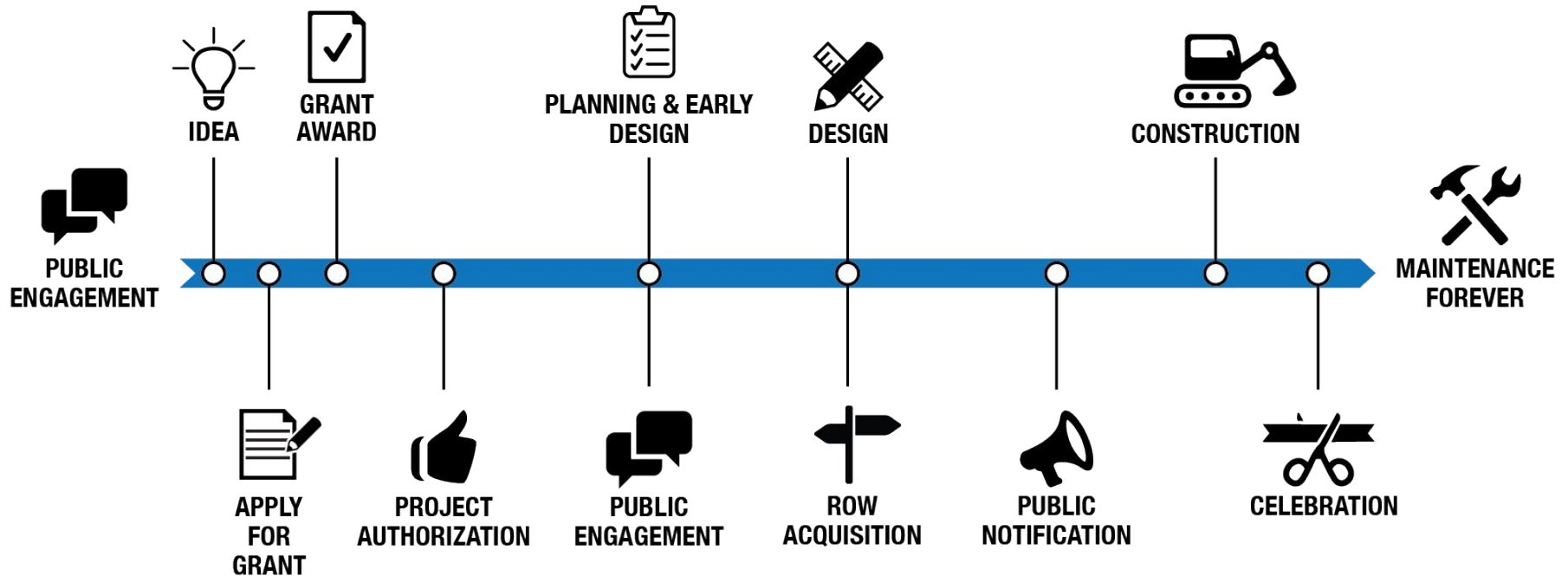
What projects will we deliver in Fiscal Year 2027?

FY 2027 Planned Capital Projects



DCS Transportation Division: **Projects**

Stages of a Capital Project





Roads

- 223rd Avenue Safe Routes to School Improvements (near Fairview Elementary)
 - Adds ADA accessible sidewalk (school side), bike lanes, drainage improvements, and pavement resurfacing.
- Buxton at Cherry Park Traffic Signal Replacement
 - Replaces end of life span wire traffic signal with mast arm signal. Adds ADA accessible sidewalk, and pavement resurfacing.



Existing Reeder Road Culvert

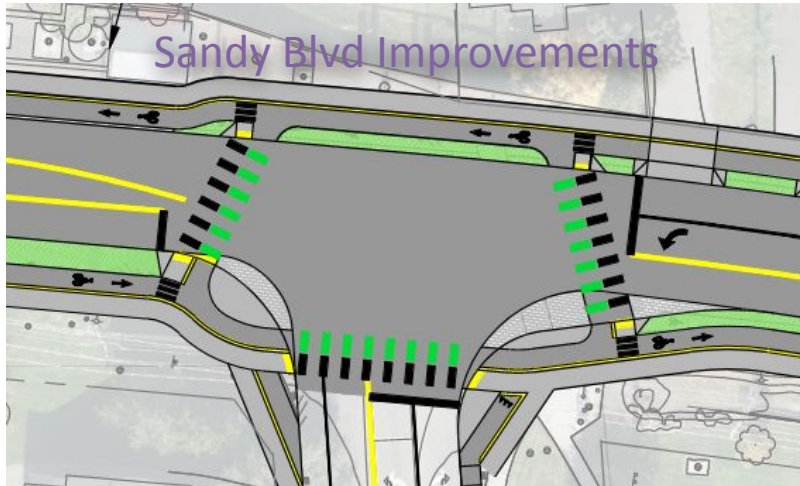


Existing 302nd at Jackson Culvert

Roads

- Reeder Road Culvert Replacement (Sauvie Island)
 - Replace failed 48"x 2 metal culverts at slough crossing of Reeder Road with a single 12 foot diameter HDPE culvert.
- 302nd and Jackson Culvert Replacement
 - Replace failed 24" concrete/metal culvert with new 24" HDPE culvert crossing 302nd north of Jackson.

DCS Transportation Division: **Projects**



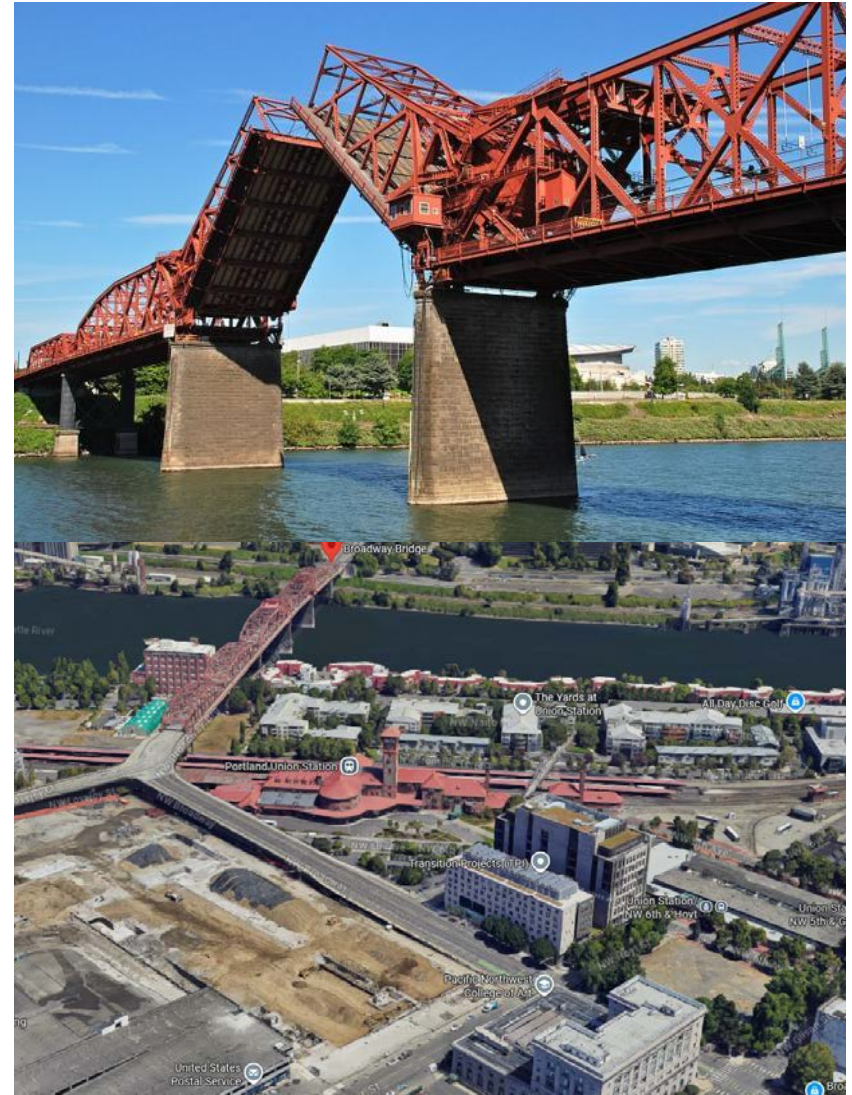
- Sandy Blvd. 201st to Quail Hollow Design
 - Begin design of Sandy Blvd. separated bike lanes and sidewalk project including drainage and paving.
- Kaiser Road Embankment
 - Repair storm damaged shoulder.
- Gordon Creek Slide Repair
 - Repair slide / rock fall damaged area.
- Rocky Point Slide Repair



DCS Transportation Division: Projects

Willamette River Bridges

- Initiating next Broadway Bridge Rehabilitation Project
 - Partial Painting
 - West Approach Overlay
 - Lighting Upgrade
 - Structural Strengthening



Projects Spotlight:

- Earthquake Ready Burnside Bridge (EQRB)
- ADA Ramp replacements - one time only request



Earthquake Ready Burnside Bridge (EQRB)



DCS Transportation Division: EQRB

Purpose: The Earthquake Ready Burnside Bridge (EQRB) Project will replace the existing 96-year-old double-leaf bascule movable bridge with a new, seismically resilient bridge, providing the Burnside Street, a regionally designated lifeline route, with a crossing of the Willamette River that would remain fully operational and accessible for vehicles and other modes of transportation immediately following a major earthquake.



Current Status

- USDOT Bridge Investment Program grant application is pending for \$447M
- Funding gap is currently \$860M - \$1.06B based on a fall 2033 completion date
- Beginning of construction is currently not set due to ongoing uncertainty at the federal level around transportation funding
- Key design work will be completed to ensure the project is construction-ready



Ongoing Work:

FY26

- Advance level of design to 60%; anticipated May 2026
- Prepare and submit all permits and land use applications with long lead time and shelf life
- Prepare final drafts of all other permits and land use applications
- Document key design decisions and agency/stakeholder agreements to date

FY27

- Prepare “Pick Up Plan”
- Develop 60% cost estimate and updated range of costs
- Continue to pursue funding opportunities as they arise



DCS Transportation Division: ADA Ramps



DCS Transportation Division: **ADA Ramps**

Budget Note #7 FY 2025 Budget Development

- Board Required Transportation to Develop 10 year plan to replace all ramps
 - Due Early January 2026
 - Include
 - Cost estimate
 - Schedule
 - Funding options
 - Outreach efforts (past and future)
- Developed plan and report
 - Submitted to Board in November 2025
 - Presented plan to Board December 9, 2025



DCS Transportation Division: ADA Ramps

Plan Schedule

Bundle Name	Fiscal Year	Ramps in Bundle	Design	ROW	Construction	Ramps Replaced
	2027					0
Cherry Park Rd (North) & Troutdale Road	2028	63				0
Halsey St & 238th Avenue	2029	59				63
Downtown Troutdale	2030	53				59
Safer Sandy	2031	55				53
Stark St. and Vicinity	2032	55				55
East Glisan St & Vicinity, + Dunthorpe-Riverdale	2033	62				55
West Glisan St & Troutdale Airport	2034	51				62
Westside & ODOT adjacent	2035	37				51
	2036					37



DCS Transportation Division: ADA Ramps

Plan Cost

Bundle Name	Fiscal Year	# of Ramps in Bundle	Design Cost	ROW Cost	Construction Cost	Total Cost (including 20% contingency*)
Design begins on multiple bundles	2027		\$1,257,000	\$0.00	\$0.00	\$1,504,000
Cherry Park Rd (North) & Troutdale Rd	2028	63	\$557,000	\$331,000	\$0.00	\$1,065,000
Halsey St & 238th Avenue	2029	59	\$591,000	\$317,000	\$2,369,000	\$3,932,000
Downtown Troutdale	2030	53	\$604,000	\$291,000	\$2,268,000	\$3,796,000
Safer Sandy	2031	55	\$349,000	\$310,000	\$2,089,000	\$3,297,000
Stark St. and Vicinity	2032	55	\$589,000	\$317,000	\$2,222,000	\$3,753,000
East Glisan St & Vicinity, + Dunthorpe	2033	62	\$438,000	\$367,000	\$2,567,000	\$4,045,000
West Glisan St & Troutdale Airport	2034	51	\$0.00	\$309,000	\$2,334,000	\$3,172,000
Westside & ODOT adjacent	2035	37	\$0.00	\$230,000	\$2,697,000	\$3,512,000
Construction completes on all bundles	2036		\$0.00	\$0.00	\$2,274,000	\$2,728,000
Totals		435	\$4,381,000	\$2,472,000	\$18,819,000	\$30,805,000
Average Cost per FY			\$438,000	\$247,000	\$1,882,000	\$3,081,000



Transportation Curb Ramp Replacement Plan

Funding: Cost \$30.8M



Pay as you go

- Budget **Annually** for the ADA program



20-year Bond

- Issue bonds with a **20-year** repayment term
- All funds available up front
- Annual payment **\$2.5M**
- Cost **\$19.8M** in interest



10-year Bond

- Issue bonds with a **10-year** repayment term
- All funds available up front
- Annual payment **\$3.8M**
- Cost **\$7.2M** in interest



Transportation Curb Ramp Replacement Plan

Revenue Source Considerations for “Pay As you Go”



General Fund

- Assumes enough one time only funds to cover annual cost of program
- Would need between \$1M and \$4M depending on the year



State Highway Fund (SHF)

- Reduces funding available for other critical transportation needs
- Maintenance
- Capital Projects
- Operations



Motor Vehicle Rental Tax (MVRT)

- Won't be available until FY 2031



Transportation Curb Ramp Replacement Plan

Funding: Cost \$30.8M

Revenue Source Considerations for Bonding



Pros: Benefits of Bonding



All funds available up front



Can complete project quicker



Saves on inflation costs



Hedges against uncertainty



Cons: Costs of Bonding



Saving will not offset the cost of interest



Questions?

