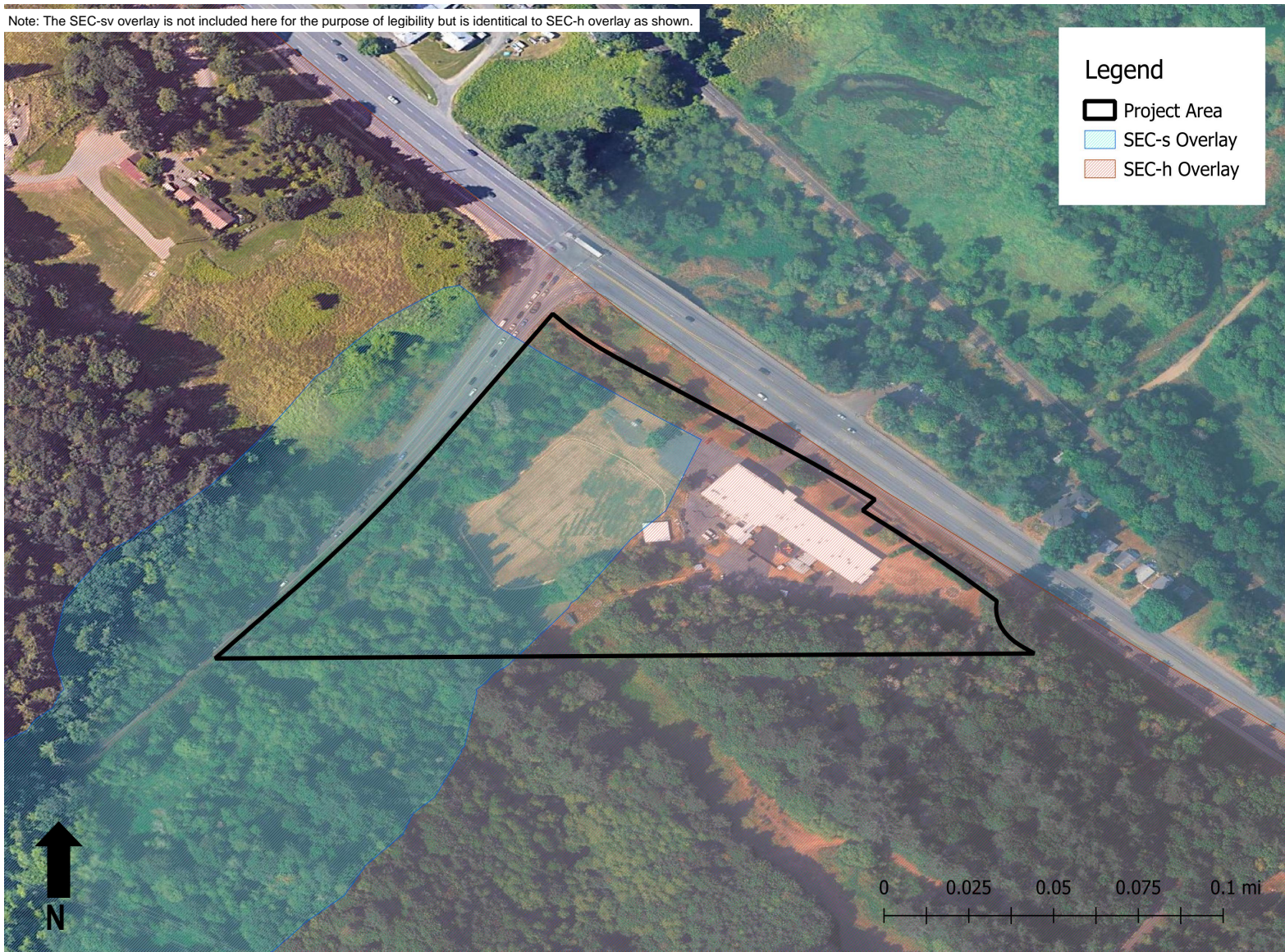


Note: The SEC-sv overlay is not included here for the purpose of legibility but is identical to SEC-h overlay as shown.



Project #8018
2/23/2026



Pacific Habitat Services, Inc.
9450 SW Commerce Circle, Suite 180
Wilsonville, OR 97070

Multnomah County Significant Environmental Concern Areas
NARA NW RTC, 17645 NW St. Helens Road - Portland, Oregon
multco.maps.arcgis.com

FIGURE
2