



HACKER



NARA NW RTC

LAND USE REVIEW 260220

CLIENT
NARA NW RTC

<Client Address>
<Client Phone>

ARCHITECT

HACKER
SIENNA SHIGA
555 SE MLK AVE, SUITE 501 PORTLAND, OR 97214
503.337.1254

ARCHITECT

TAWAW
WANDA DALLA COSTA
1101 W UNIVERSITY DRIVE, TEMPE, AZ 85281
480.565.7840

PROJECT MANAGER

SOI
KIM KNOX
421 SW 6TH AVE #750, PORTLAND, OR 97204
503.242.0084

STRUCTURAL

HOLMES
JENNIFER EGGERS
555 SE MLK JR. BOULEVARD, SUITE 602, PORTLAND, OR 97214
503.673.9323

CIVIL

DOWL
ROBERT LEGER
309 SW 6TH AVE., SUITE 700, PORTLAND, OR 97204
971.280.8641

LANDSCAPE

UNDERSTORY
AMY CRAGG
<Contact Address>
503.406.8624

MECHANICAL ELECTRICAL PLUMBING

SAZAN
JENN ANDERSON
111 SW FIFTH AVE., SUITE 3210, PORTLAND, OR 97204
503.416.2400

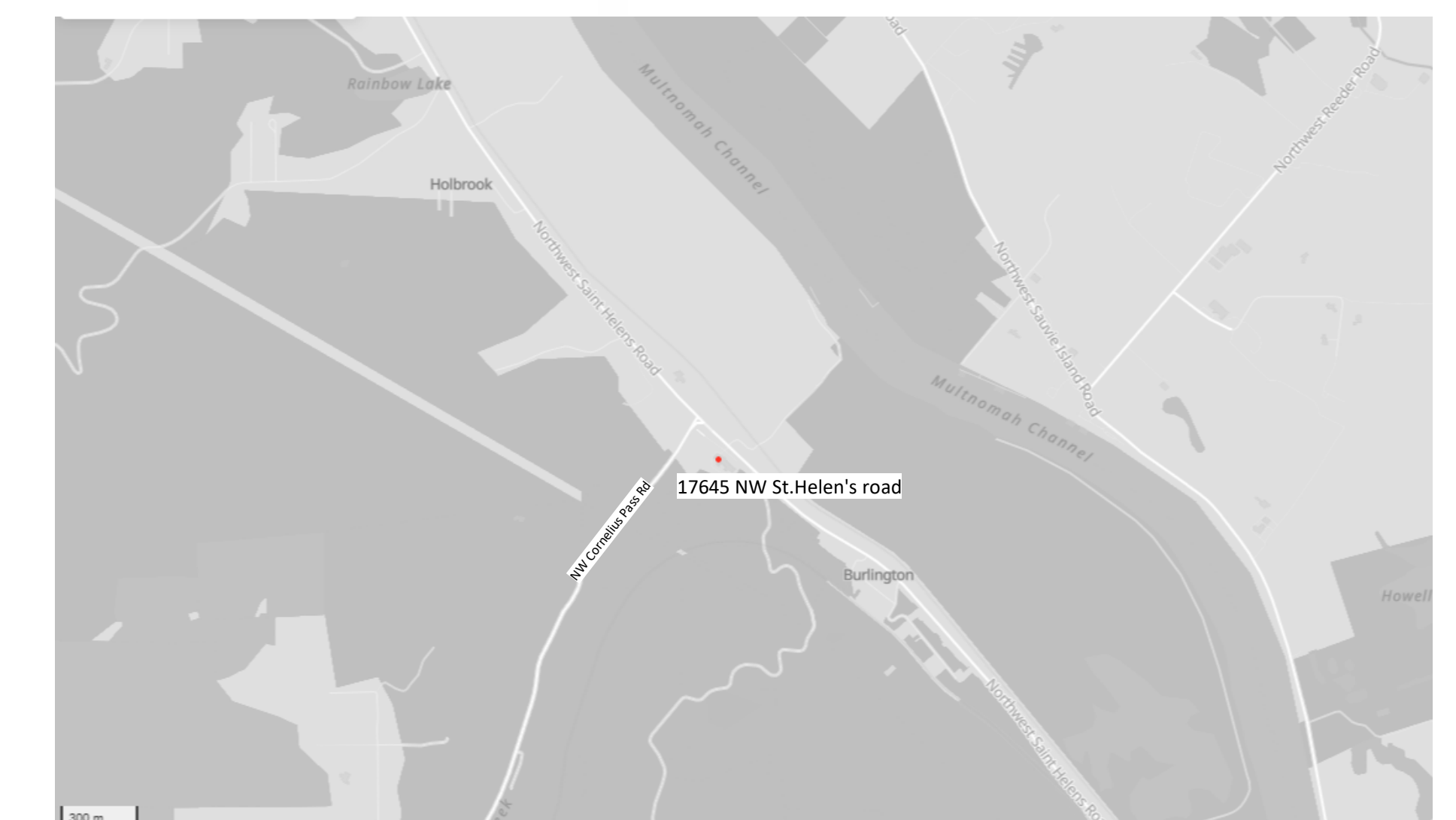
KITCHEN

JBK
JILL BIERNAN
7325 NE IMBRIE DRIVE #109, HILLSBORO, OR 97124
503.686.8958

CONTRACTOR

BREMIK
BEN CARLSON
1026 SE STARK ST. PORTLAND, OR 97214
503.688.1000

VICINITY MAP



CIVIL

Sheet Name	Sheet Number
EXISTING CONDITIONS & DEMOLITION PLAN	C.1.0
UTILITY PLAN	C.2.0
EROSION CONTROL PLAN	C.3.0
FIRE SERVICE PLAN	WAT 1

LANDSCAPE

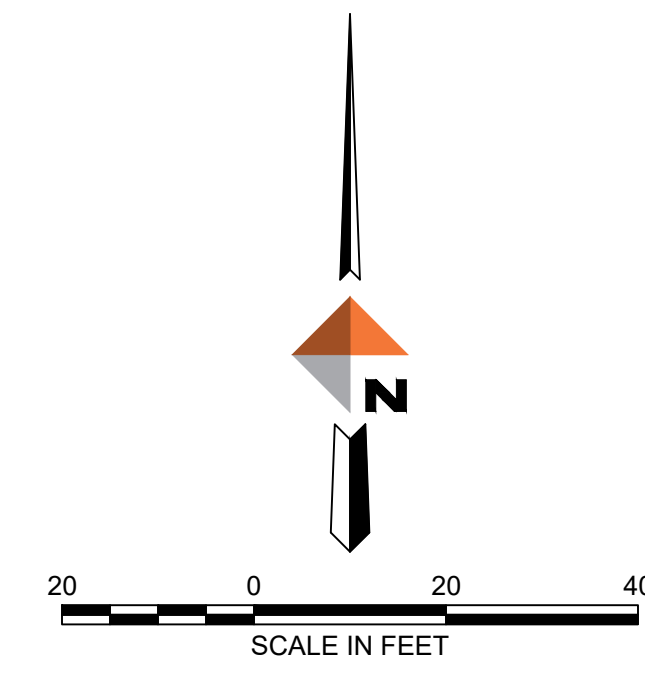
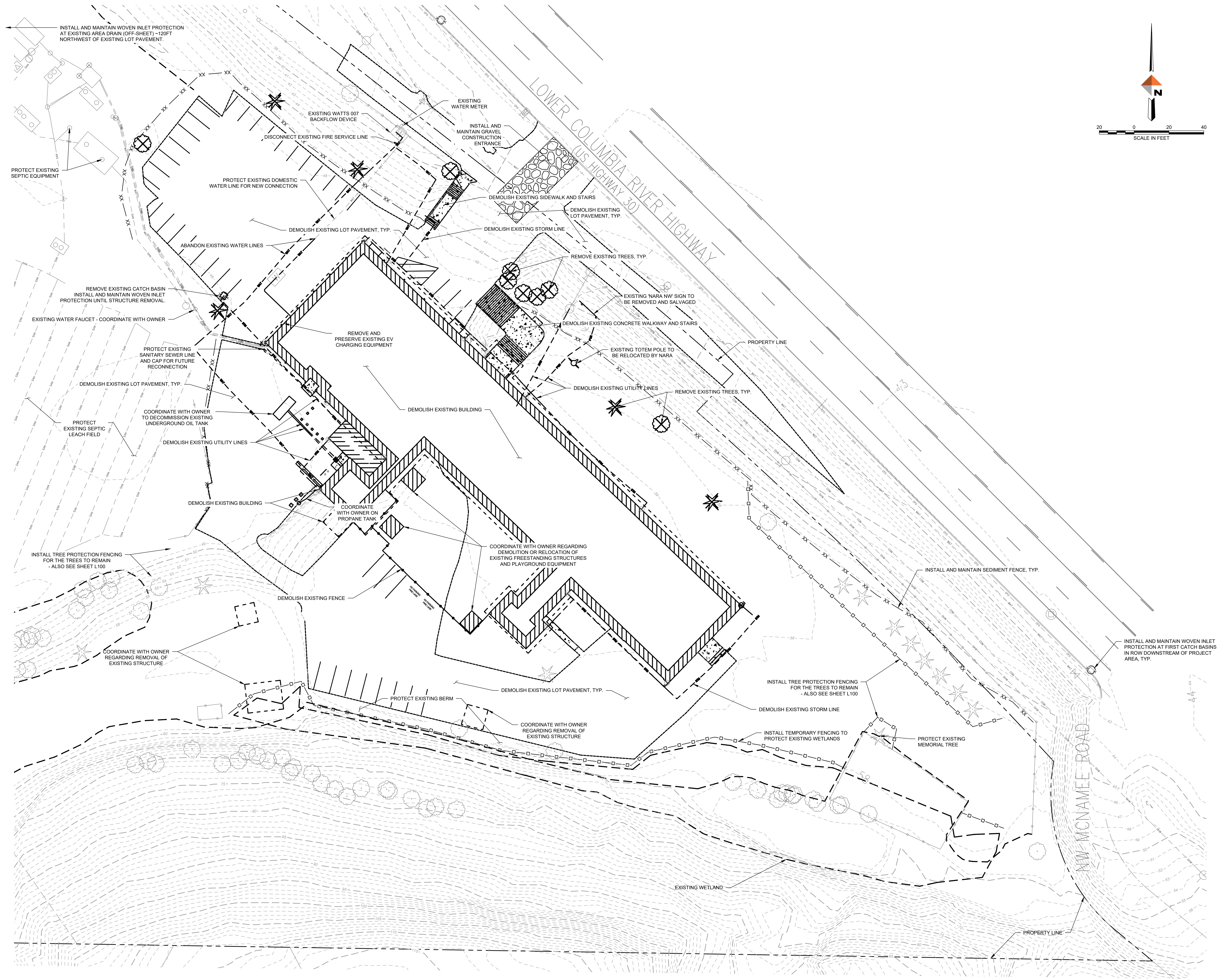
Sheet Name	Sheet Number
TREE PROTECTION PLAN- OVERALL SITE	L.100
SITE PLAN- OVERALL SITE	L.110
SITE MATERIALS PLAN- EAST	L.112

ARCHITECTURE

Sheet Name	Sheet Number
LU_SITE PLAN_EXISTING	A-1.00
LU_SITE PLAN	A-1.10
LU_SCENIC VIEWS TO PROJECT	A-1.12
LU_FLOOR PLAN BASEMENT LEVEL	A-1.20
LU_FLOOR PLAN - MAIN LEVEL	A-1.21
LU_FLOOR PLAN- TOP LEVEL	A-1.22
LU_EXTERIOR ELEVATIONS	A-1.23

LIGHTING

Sheet Name	Sheet Number
ELECTRICAL LIGHTING - SITE PLAN	E-104
ELECTRICAL LIGHTING SCHEDULE	E-601



ARCHITECTS

HACKER

555 SE MLK JR. BLVD, SUITE 501, PORTLAND OR 97214

ARCHITECTURE COLLECTIVE INC.
1101 W University Dr, Tempe, AZ 85281
CONSULTANT

309 SW 6th Avenue, Suite 700
Portland, Oregon 97204
971-280-8641

STAMP

NOT FOR CONSTRUCTION

REVISION NO. _____ DATE _____

KEY PLAN - (NTS)

NARA NW RTC

NARA NW
17645 NW St Helens Rd,
Portland, OR 97231

ISSUANCE
LAND USE REVIEW

PROJECT NUMBER
023091

DATE
26.02.20

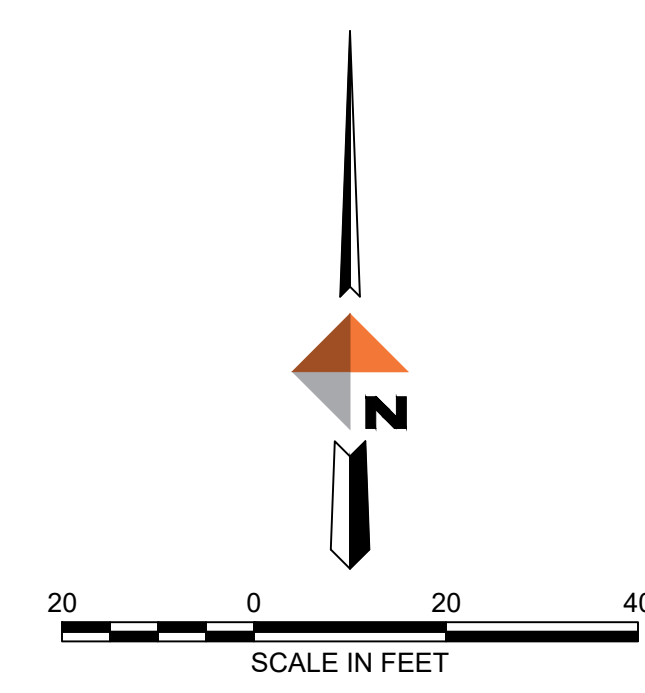
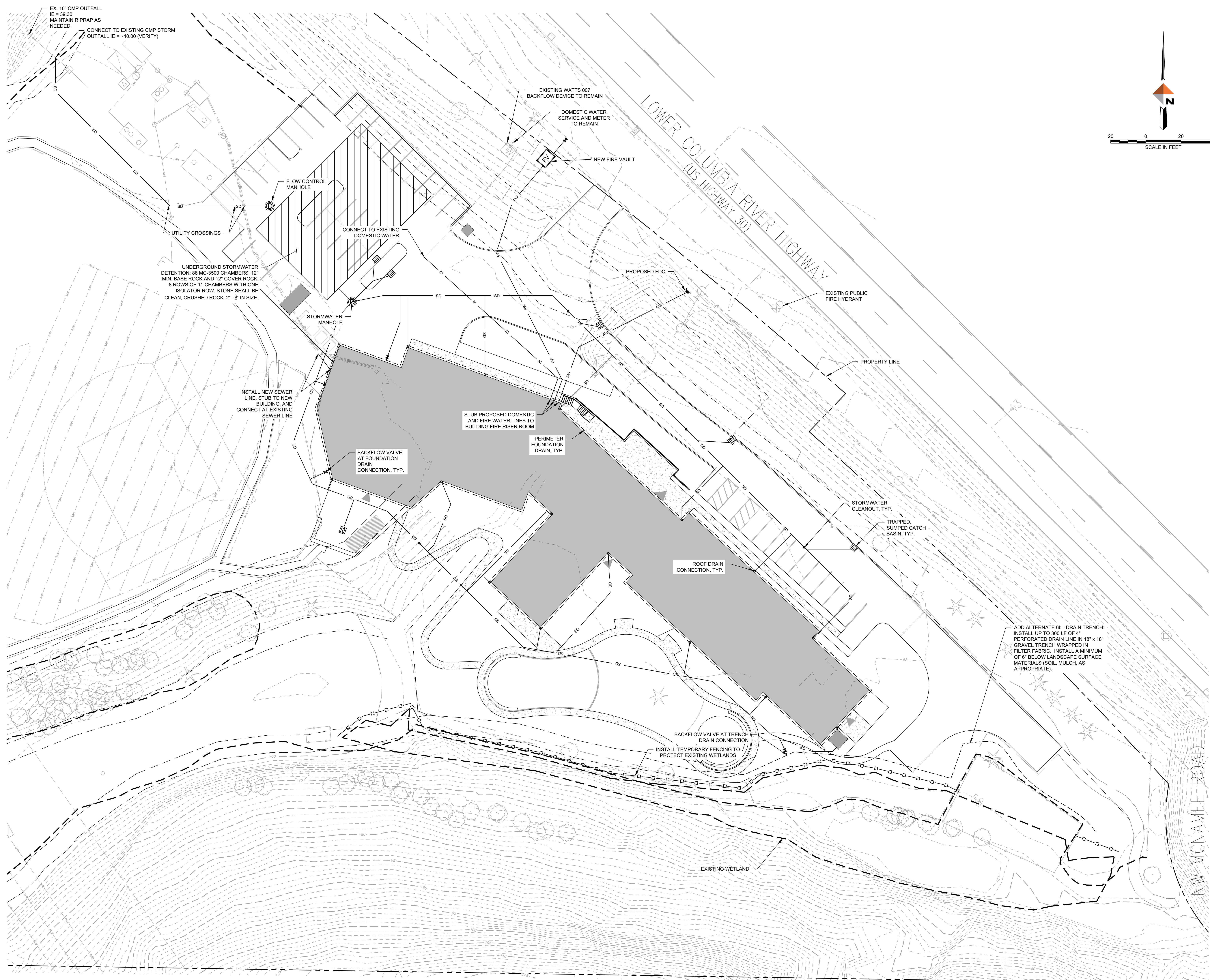
SCALE
1" = 20'

DRAWING TITLE
EXISTING CONDITIONS & DEMOLITION PLAN

SHEET NUMBER
C1.0

J:\001\0023\01\05\CAD\SD\SC-CS-EX-10023.dwg PLOT DATE 2026-2-20 10:56 SAVED DATE 2026-02-19 19:20 USER: ahewes

J:\001\023-01\05CAD\SD\SC-C5-UT-16023.dwg PLOT DATE 2/26/20 10:56 SAVED DATE 2026-02-20 10:54 USER: ahrens



ARCHITECTS

HACKER

555 SE MLK JR. BLVD, SUITE 501, PORTLAND OR 97214



ARCHITECTURE COLLECTIVE INC.
1101 W University Dr, Tempe, AZ 85281
CONSULTANT



309 SW 6th Avenue, Suite 700
Portland, Oregon 97204
971-280-8641

STAMP

NOT FOR CONSTRUCTION

REVISION NO. _____ DATE _____

KEY PLAN - (NTS)

NARA NW RTC

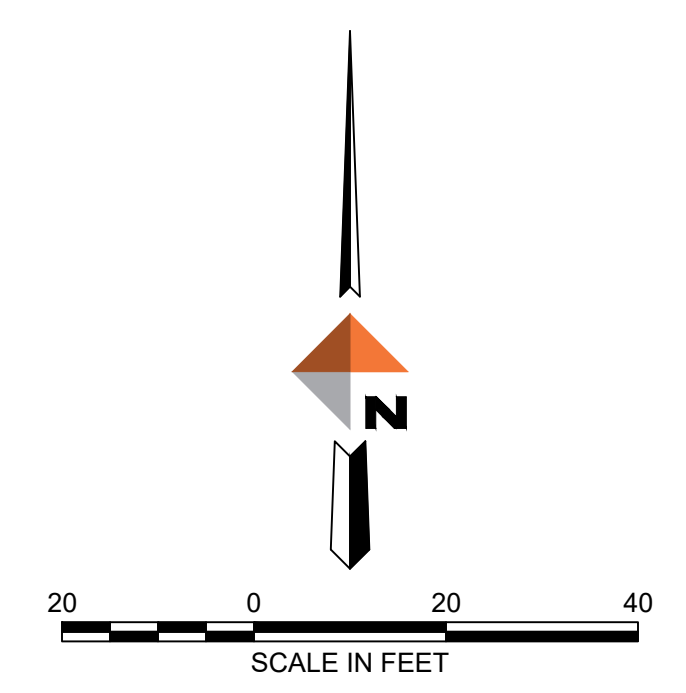
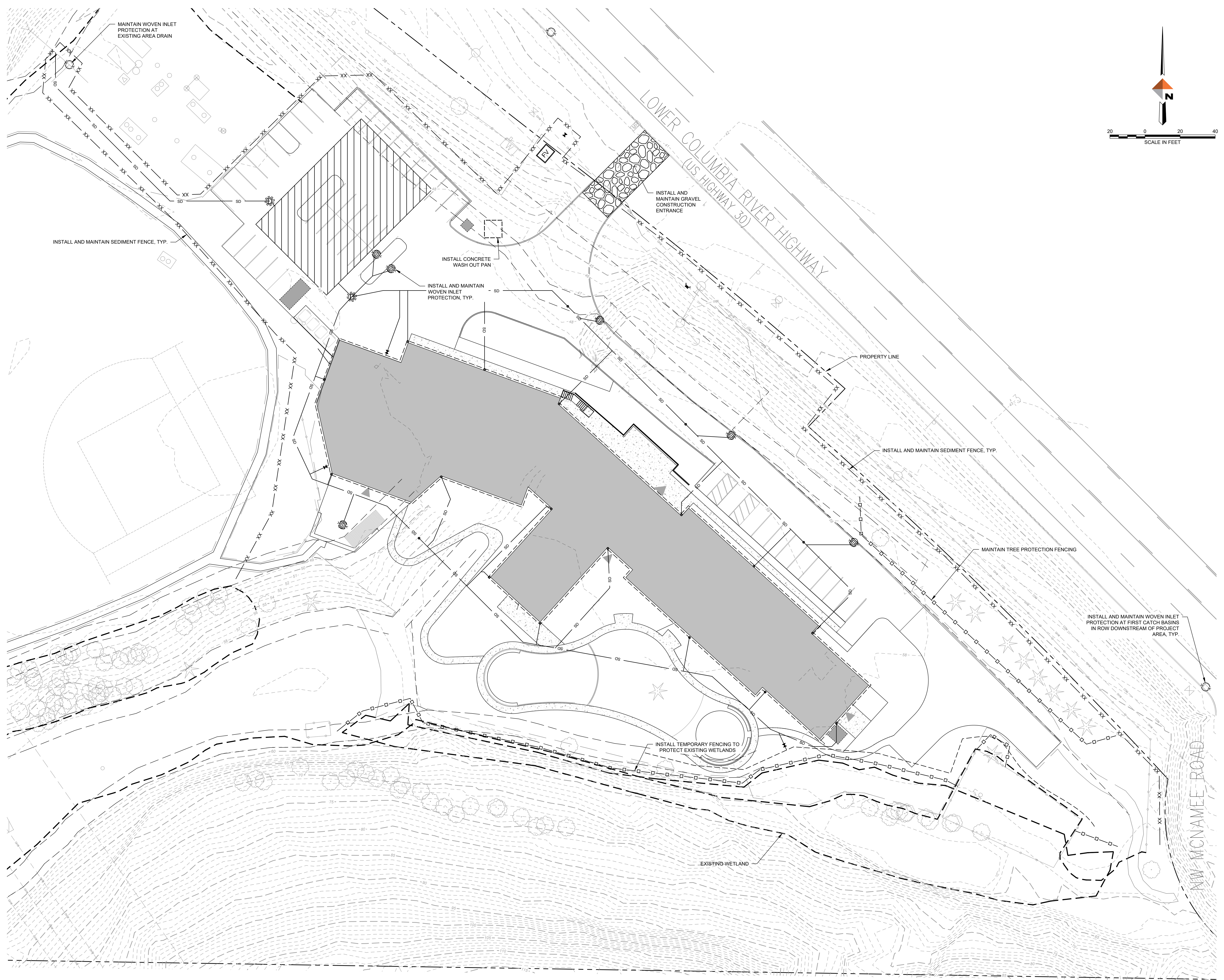


NARA NW
17645 NW St Helens Rd,
Portland, OR 97231

ISSUANCE
LAND USE REVIEW
PROJECT NUMBER
023091
DATE
26.02.20
SCALE
1" = 20'
DRAWING TITLE
UTILITY PLAN

SHEET NUMBER
C2.0

J:\001\0023-1165CAD\SD\SC-C5-ESC-10023.dwg PLOT DATE: 2026-02-20 10:56 SAVED DATE: 2026-02-20 10:55 USER: elwms



ARCHITECTS

HACKER
555 SE MLK JR. BLVD, SUITE 501, PORTLAND OR 97214

TAW
ARCHITECTURE COLLECTIVE INC.
1101 W University Dr, Tempe, AZ 85281
CONSULTANT

DOWL
www.dowl.com
309 SW 6th Avenue, Suite 700
Portland, Oregon 97204
971-280-8641

STAMP

NOT FOR CONSTRUCTION

REVISION NO. _____ DATE _____

KEY PLAN - (NTS)

NARA NW RTC
NATIVE AMERICAN REHABILITATION ASSOCIATION
OF THE NORTHWEST, INC.

NARA NW
17645 NW St Helens Rd,
Portland, OR 97231

ISSUANCE
LAND USE REVIEW

PROJECT NUMBER
023091

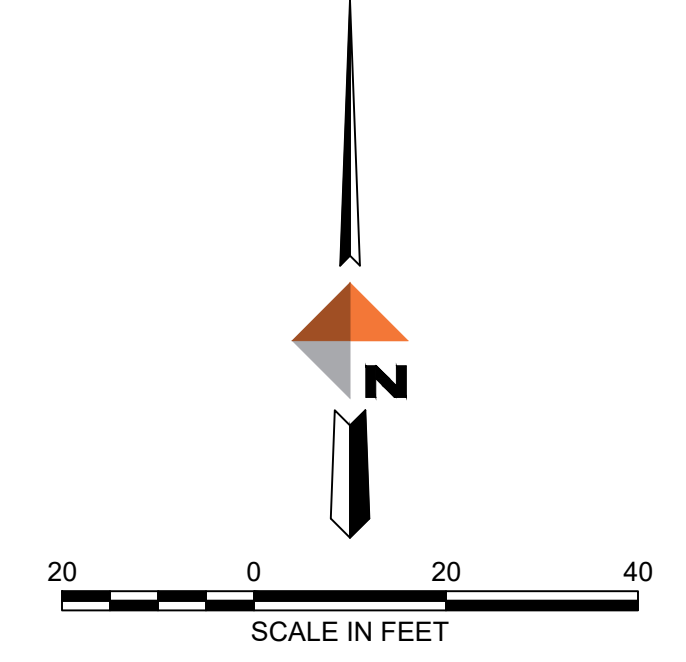
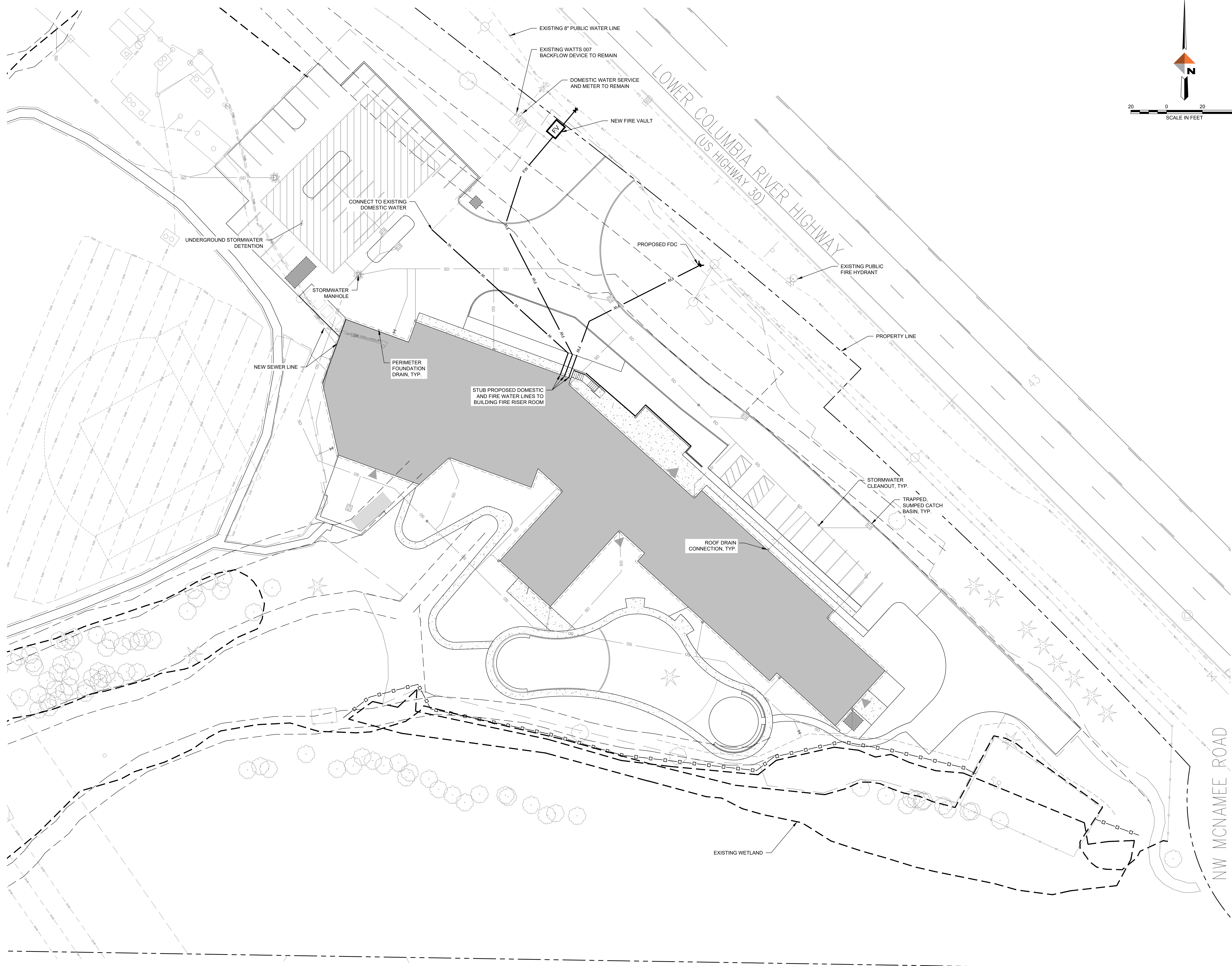
DATE
26.02.20

SCALE
1" = 20'

DRAWING TITLE
EROSION CONTROL PLAN

SHEET NUMBER
C3.0

J:\001\023-01\05CAD\SD\SC-C5-F5-1023.dwg PLOT DATE 2026-2-20 10:56 SAVED DATE 2026-02-20 10:54 USER: shenils



ARCHITECTS

HACKER
 555 SE MLK JR. BLVD, SUITE 501, PORTLAND OR 97214

TAW
 ARCHITECTURE COLLECTIVE INC.
 1101 W University Dr, Tempe, AZ 85281

CONSULTANT

DOWL
 WWW.DOWL.COM

309 SW 6th Avenue, Suite 700
 Portland, Oregon 97204
 971-280-8641

STAMP

NOT FOR CONSTRUCTION

REVISION NO. DATE

KEY PLAN - (NTS)

NARA NW RTC
NATIVE AMERICAN REHABILITATION ASSOCIATION
 OF THE NORTHWEST, INC.

NARA NW
 17645 NW St Helens Rd,
 Portland, OR 97231

ISSUANCE
 LAND USE REVIEW

PROJECT NUMBER
 023091

DATE
 26.02.20

SCALE
 1" = 20'

DRAWING TITLE
FIRE SERVICE PLAN

SHEET NUMBER
WAT1

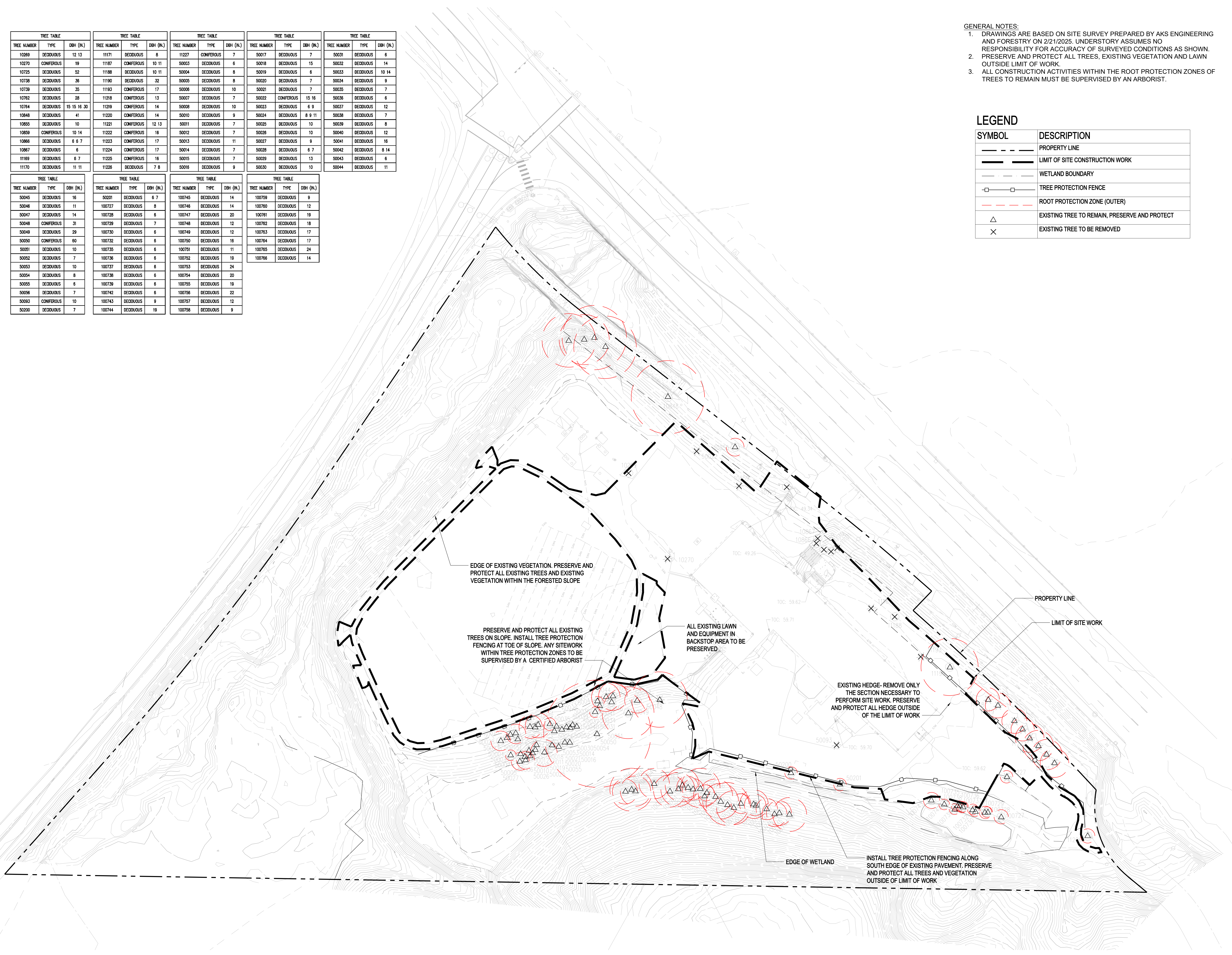
TREE TABLE			TREE TABLE			TREE TABLE			TREE TABLE			TREE TABLE		
TREE NUMBER	TYPE	DBH (IN.)	TREE NUMBER	TYPE	DBH (IN.)	TREE NUMBER	TYPE	DBH (IN.)	TREE NUMBER	TYPE	DBH (IN.)	TREE NUMBER	TYPE	DBH (IN.)
10269	DECIDUOUS	12 13	11171	DECIDUOUS	8	11227	CONIFEROUS	7	50017	DECIDUOUS	7	50031	DECIDUOUS	6
10270	CONIFEROUS	19	11187	CONIFEROUS	10 11	50003	DECIDUOUS	6	50018	DECIDUOUS	15	50032	DECIDUOUS	14
10275	DECIDUOUS	52	11188	DECIDUOUS	10 11	50004	DECIDUOUS	8	50019	DECIDUOUS	6	50033	DECIDUOUS	10 14
10738	DECIDUOUS	36	11190	DECIDUOUS	32	50005	DECIDUOUS	8	50020	DECIDUOUS	7	50034	DECIDUOUS	9
10739	DECIDUOUS	35	11193	CONIFEROUS	17	50006	DECIDUOUS	10	50021	DECIDUOUS	7	50035	DECIDUOUS	7
10762	DECIDUOUS	28	11218	CONIFEROUS	13	50007	DECIDUOUS	7	50022	CONIFEROUS	15 16	50036	DECIDUOUS	6
10764	DECIDUOUS	15 15 16 30	11219	CONIFEROUS	14	50008	DECIDUOUS	10	50023	DECIDUOUS	6 9	50037	DECIDUOUS	12
10848	DECIDUOUS	41	11220	CONIFEROUS	14	50010	DECIDUOUS	9	50024	DECIDUOUS	6 9 11	50038	DECIDUOUS	7
10855	DECIDUOUS	10	11221	CONIFEROUS	12 13	50011	DECIDUOUS	7	50025	DECIDUOUS	10	50039	DECIDUOUS	8
10859	CONIFEROUS	10 14	11222	CONIFEROUS	16	50012	DECIDUOUS	7	50026	DECIDUOUS	10	50040	DECIDUOUS	12
10866	DECIDUOUS	6 6 7	11223	CONIFEROUS	17	50013	DECIDUOUS	11	50027	DECIDUOUS	9	50041	DECIDUOUS	16
10867	DECIDUOUS	6	11224	CONIFEROUS	17	50014	DECIDUOUS	7	50028	DECIDUOUS	6 7	50042	DECIDUOUS	8 14
11189	DECIDUOUS	6 7	11225	CONIFEROUS	17	50015	DECIDUOUS	7	50029	DECIDUOUS	13	50043	DECIDUOUS	6
11170	DECIDUOUS	11 11	11226	DECIDUOUS	7 8	50016	DECIDUOUS	9	50030	DECIDUOUS	10	50044	DECIDUOUS	11

TREE TABLE			TREE TABLE			TREE TABLE			TREE TABLE		
TREE NUMBER	TYPE	DBH (IN.)	TREE NUMBER	TYPE	DBH (IN.)	TREE NUMBER	TYPE	DBH (IN.)	TREE NUMBER	TYPE	DBH (IN.)
50045	DECIDUOUS	16	50201	DECIDUOUS	6 7	100745	DECIDUOUS	14	100759	DECIDUOUS	9
50046	DECIDUOUS	11	100727	DECIDUOUS	8	100746	DECIDUOUS	14	100780	DECIDUOUS	12
50047	DECIDUOUS	14	100728	DECIDUOUS	6	100747	DECIDUOUS	20	100781	DECIDUOUS	19
50048	CONIFEROUS	31	100729	DECIDUOUS	7	100748	DECIDUOUS	12	100782	DECIDUOUS	18
50049	DECIDUOUS	29	100730	DECIDUOUS	6	100749	DECIDUOUS	12	100783	DECIDUOUS	17
50050	CONIFEROUS	80	100732	DECIDUOUS	6	100750	DECIDUOUS	16	100784	DECIDUOUS	17
50051	DECIDUOUS	10	100735	DECIDUOUS	6	100751	DECIDUOUS	11	100785	DECIDUOUS	24
50052	DECIDUOUS	7	100736	DECIDUOUS	6	100752	DECIDUOUS	19	100786	DECIDUOUS	14
50053	DECIDUOUS	10	100737	DECIDUOUS	6	100753	DECIDUOUS	24			
50054	DECIDUOUS	8	100738	DECIDUOUS	6	100754	DECIDUOUS	20			
50055	DECIDUOUS	6	100739	DECIDUOUS	6	100755	DECIDUOUS	19			
50056	DECIDUOUS	7	100742	DECIDUOUS	6	100756	DECIDUOUS	22			
50063	CONIFEROUS	10	100743	DECIDUOUS	9	100757	DECIDUOUS	12			
50200	DECIDUOUS	7	100744	DECIDUOUS	19	100758	DECIDUOUS	9			

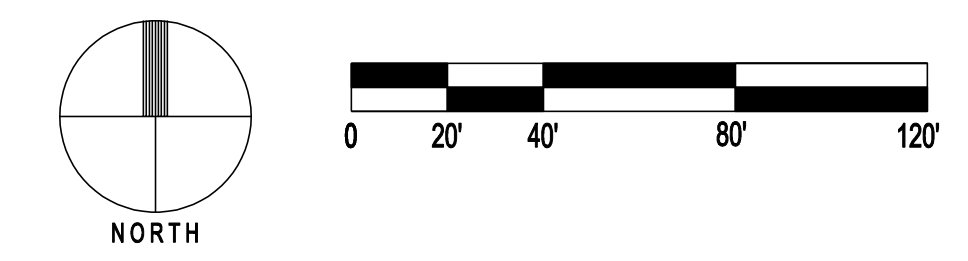
- GENERAL NOTES:
- DRAWINGS ARE BASED ON SITE SURVEY PREPARED BY AKS ENGINEERING AND FORESTRY ON 2/21/2025. UNDERSTORY ASSUMES NO RESPONSIBILITY FOR ACCURACY OF SURVEYED CONDITIONS AS SHOWN. PRESERVE AND PROTECT ALL TREES, EXISTING VEGETATION AND LAWN OUTSIDE LIMIT OF WORK.
 - ALL CONSTRUCTION ACTIVITIES WITHIN THE ROOT PROTECTION ZONES OF TREES TO REMAIN MUST BE SUPERVISED BY AN ARBORIST.

LEGEND

SYMBOL	DESCRIPTION
---	PROPERTY LINE
---	LIMIT OF SITE CONSTRUCTION WORK
---	WETLAND BOUNDARY
□	TREE PROTECTION FENCE
---	ROOT PROTECTION ZONE (OUTER)
△	EXISTING TREE TO REMAIN, PRESERVE AND PROTECT
×	EXISTING TREE TO BE REMOVED



1 TREE PROTECTION PLAN- OVERALL SITE
SCALE: 1"=40'-0"



SITE ADD ALTERNATES GROUP 4:

SITE STRUCTURES

SYMBOL	DESCRIPTION
(4A) →	SITE STRUCTURE ALTERNATE A: SWEAT LODGE CHANGING ROOMS. SEE ARCHITECTURE FOR DESCRIPTION
(4B) →	SITE STRUCTURE ALTERNATE B: CUSTOM SHELTER FOR WOOD STORAGE. SEE ARCHITECTURE FOR DESCRIPTION

SITE ADD ALTERNATES GROUP 5:

SITE PATHS AND ACCESS

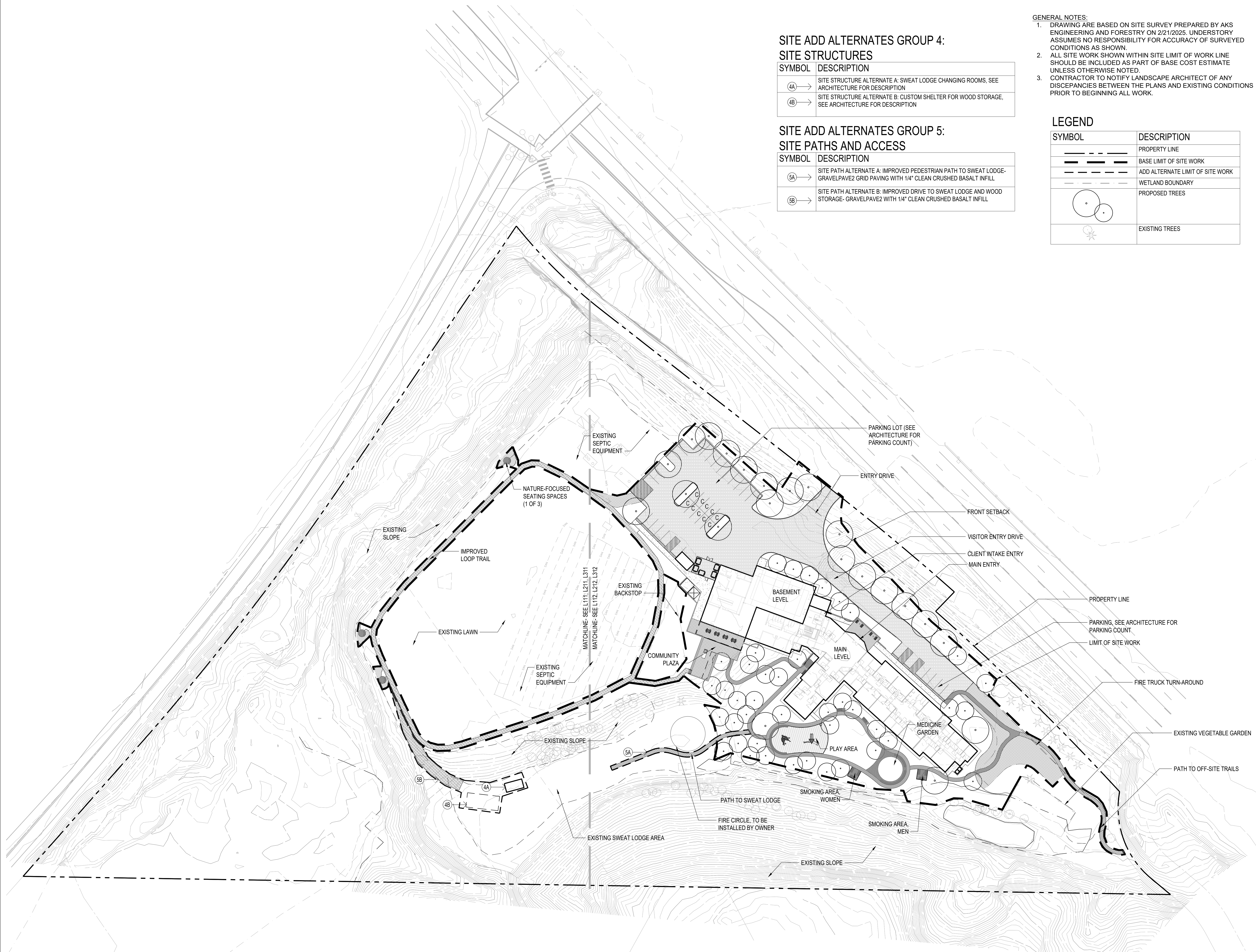
SYMBOL	DESCRIPTION
(5A) →	SITE PATH ALTERNATE A: IMPROVED PEDESTRIAN PATH TO SWEAT LODGE- GRAVELPAVE2 GRID PAVING WITH 1/4" CLEAN CRUSHED BASALT INFILL
(5B) →	SITE PATH ALTERNATE B: IMPROVED DRIVE TO SWEAT LODGE AND WOOD STORAGE- GRAVELPAVE2 WITH 1/4" CLEAN CRUSHED BASALT INFILL

GENERAL NOTES:

- DRAWING ARE BASED ON SITE SURVEY PREPARED BY AKS ENGINEERING AND FORESTRY ON 2/21/2025. UNDERSTORY ASSUMES NO RESPONSIBILITY FOR ACCURACY OF SURVEYED CONDITIONS AS SHOWN.
- ALL SITE WORK SHOWN WITHIN SITE LIMIT OF WORK LINE SHOULD BE INCLUDED AS PART OF BASE COST ESTIMATE UNLESS OTHERWISE NOTED.
- CONTRACTOR TO NOTIFY LANDSCAPE ARCHITECT OF ANY DISCREPANCIES BETWEEN THE PLANS AND EXISTING CONDITIONS PRIOR TO BEGINNING ALL WORK.

LEGEND

SYMBOL	DESCRIPTION
---	PROPERTY LINE
---	BASE LIMIT OF SITE WORK
---	ADD ALTERNATE LIMIT OF SITE WORK
---	WETLAND BOUNDARY
○	PROPOSED TREES
✱	EXISTING TREES



STAMP

NOT FOR CONSTRUCTION

REVISION NO.

DATE

KEY PLAN - (NTS)

TRUE NORTH

NARA NW RTC



NARA NW
17645 NW St Helens Rd,
Portland, OR 97231

ISSUANCE
LAND USE REVIEW

PROJECT NUMBER
023091

DATE
260220

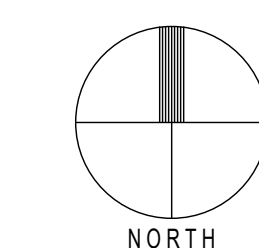
SCALE
1"=40'-0"

DRAWING TITLE
SITE PLAN-
OVERALL SITE

SHEET NUMBER

L110

1 SITE PLAN- OVERALL SITE
SCALE: 1"=40'-0"



MATERIALS SCHEDULE- PAVING

SYMBOL	NAME	DESCRIPTION
[Symbol]	VEHICULAR PAVING- ASPHALT	VEHICULAR PAVING. SEE CIVIL
[Symbol]	VEHICULAR PAVING- GRASSPAVE	VEHICULAR PAVING- GRASSPAVE WITH TURF INFILL TURF TO BE ECO-LAWN SEED MIX. SEE PLANTING SCHEDULE HTTPS://INVISIBLESTRUCTURES.COM/APPLICATIONS/FIRE-LANES/
[Symbol]	VEHICULAR PAVING- CONCRETE	REINFORCED CONCRETE SIDEWALK WITH TOPCAST SURFACE RETARDANT DEEP ETCH EXPOSED AGGREGATE FINISH AND TOOLED JOINTS
[Symbol]	VEHICULAR PAVING- GRAVEL	GRAVELPAVE2 WITH 1/4" CLEAN CRUSHED BASALT FILL HTTPS://INVISIBLESTRUCTURES.COM/PRODUCTS/GRAVELPAVE2/
[Symbol]	PEDESTRIAN CONCRETE TYPE 1 FINISH	CAST IN PLACE CONCRETE PAVING WITH TOPCAST SURFACE RETARDANT DEEP ETCH EXPOSED AGGREGATE FINISH AND TOOLED JOINTS
[Symbol]	PEDESTRIAN CONCRETE TYPE 2 FINISH	CAST IN PLACE CONCRETE PAVING WITH LIGHT BROOM FINISH AND TOOLED JOINTS
[Symbol]	PEDESTRIAN PAVING- PAVERS	OPTION 1: SAND-SET CONCRETE UNIT PAVERS. 8" L X 4" W X 3" D HOLLAND PAVERS. MUTUAL MATERIALS HTTPS://WWW.MUTUALMATERIALS.COM/PRODUCTS/HOLLAND-PAVERS/ OPTION 2: SAND-SET BASALT HEXAGONAL PAVERS. HTTPS://CASCADESTONENETWORKS.COM/HARDSCAPES/BASALT-PAVERS/?SRSLTID=AFMBOOQ_IWYHNWEVCWSCPSN_NSI85OQZGN8IXEVKV-BAPVGRLLU64O-X
[Symbol]	PEDESTRIAN PAVING- CRUSHED ROCK	COMPACTED STONE PAVING- 1/4" MINUS CRUSHED BASALT
[Symbol]	PLAY SURFACING	POURED IN PLACE UNITARY SEAMLESS PLAY SURFACING- OPTION 1: CORKEEN CORK SURFACING HTTPS://CORKEEN.COM/EN/CORKEEN/CORKEEN-PLAY-ORIGINAL/ OPTION 2: SURFACE AMERICA RUBBER SURFACING HTTPS://WWW.SURFACEAMERICA.COM/

- GENERAL NOTES:
 1. DRAWINGS ARE BASED ON SITE SURVEY PREPARED BY AKS ENGINEERING AND FORESTRY ON 2/21/2025. UNDERSTORY ASSUMES NO RESPONSIBILITY FOR ACCURACY OF SURVEYED CONDITIONS AS SHOWN.
 2. ALL SITE WORK SHOWN WITHIN SITE LIMIT OF WORK LINE SHOULD BE INCLUDED AS PART OF BASE COST ESTIMATE UNLESS OTHERWISE NOTED.
 3. SEE L110 FOR SITE ADD ALTERNATES LIST.
 4. NOTIFY CONTRACTOR TO NOTIFY LANDSCAPE ARCHITECT OF ANY DISCREPANCIES BETWEEN THE PLANS AND EXISTING CONDITIONS PRIOR TO BEGINNING ALL WORK.

LEGEND

KEY NOTE	DESCRIPTION
[Symbol]	PROPERTY LINE
[Symbol]	BASE LIMIT OF WORK
[Symbol]	ADD ALTERNATE LIMIT OF WORK
[Symbol]	WETLAND BOUNDARY
[Symbol]	PROPOSED TREES
[Symbol]	EXISTING TREES

MATERIALS SCHEDULE- PLAY EQUIPMENT

KEY NOTE	DESCRIPTION
(A)	LEAF CLIMBER: https://www.earthscapelay.com/collection/s/junior/leaf-climber/
(B)	PLATFORM WITH SLIDE: https://www.earthscapelay.com/collection/s/log-jams/slide-platform-900/

MATERIALS SCHEDULE- FENCES AND WALLS

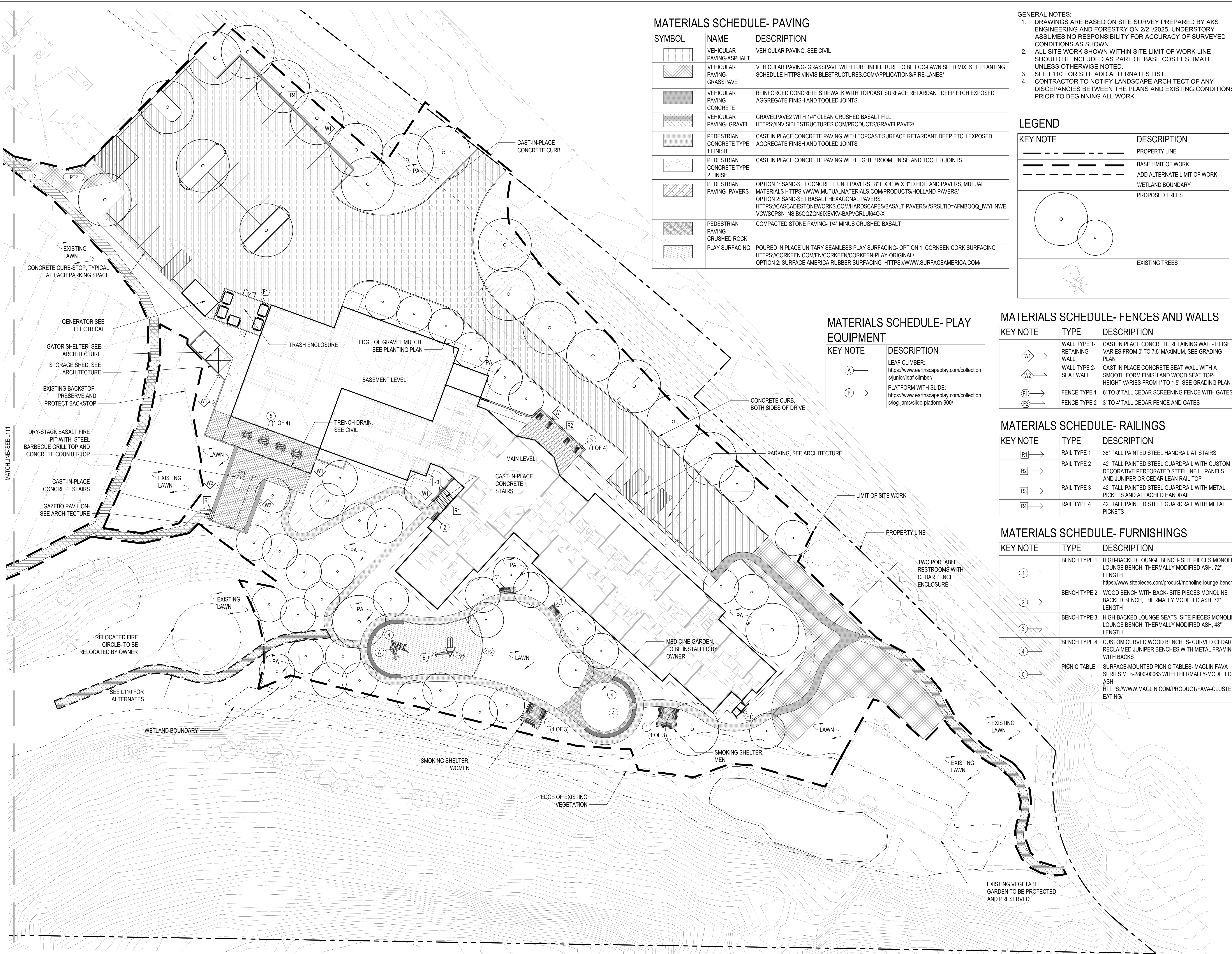
KEY NOTE	TYPE	DESCRIPTION
(W1)	WALL TYPE 1- RETAINING WALL	CAST IN PLACE CONCRETE RETAINING WALL- HEIGHT VARIES FROM 0' TO 7.5' MAXIMUM. SEE GRADING PLAN
(W2)	WALL TYPE 2- SEAT WALL	CAST IN PLACE CONCRETE SEAT WALL WITH A SMOOTH FORM FINISH AND WOOD SEAT TOP- HEIGHT VARIES FROM 1' TO 1.5'. SEE GRADING PLAN
(F1)	FENCE TYPE 1	6' TO 8' TALL CEDAR SCREENING FENCE WITH GATES
(F2)	FENCE TYPE 2	3' TO 4' TALL CEDAR FENCE AND GATES

MATERIALS SCHEDULE- RAILINGS

KEY NOTE	TYPE	DESCRIPTION
(R1)	RAIL TYPE 1	36" TALL PAINTED STEEL HANDRAIL AT STAIRS
(R2)	RAIL TYPE 2	42" TALL PAINTED STEEL GUARDRAIL WITH CUSTOM DECORATIVE PERFORATED STEEL INFILL PANELS AND JUNIPER OR CEDAR LEAN RAIL TOP
(R3)	RAIL TYPE 3	42" TALL PAINTED STEEL GUARDRAIL WITH METAL PICKETS AND ATTACHED HANDRAIL
(R4)	RAIL TYPE 4	42" TALL PAINTED STEEL GUARDRAIL WITH METAL PICKETS

MATERIALS SCHEDULE- FURNISHINGS

KEY NOTE	TYPE	DESCRIPTION
(1)	BENCH TYPE 1	HIGH-BACKED LOUNGE BENCH- SITE PIECES MONOLINE LOUNGE BENCH, THERMALLY MODIFIED ASH, 72" LENGTH HTTPS://WWW.SITEPIECES.COM/PRODUCT/MONOLINE-LOUNGE-BENCH/
(2)	BENCH TYPE 2	WOOD BENCH WITH BACK- SITE PIECES MONOLINE BACKED BENCH, THERMALLY MODIFIED ASH, 72" LENGTH
(3)	BENCH TYPE 3	HIGH-BACKED LOUNGE SEATS- SITE PIECES MONOLINE LOUNGE BENCH, THERMALLY MODIFIED ASH, 48" LENGTH
(4)	BENCH TYPE 4	CUSTOM CURVED WOOD BENCHES- CURVED CEDAR OR RECLAIMED JUNIPER BENCHES WITH METAL FRAMING, WITH BACKS
(5)	PICNIC TABLE	SURFACE-MOUNTED PICNIC TABLES- MAGLIN FAVA SERIES MTP-2800-00063 WITH THERMALLY-MODIFIED ASH HTTPS://WWW.MAGLIN.COM/PRODUCT/FAVA-CLUSTER-S-EATING/



STAMP
NOT FOR CONSTRUCTION

REVISION NO. DATE

KEY PLAN - (NTS)



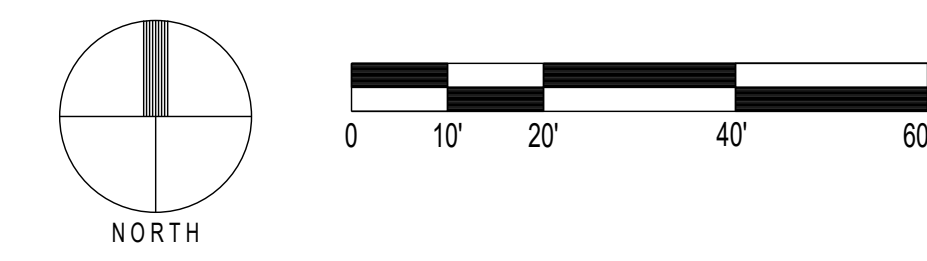
NARA NW
 17645 NW St Helens Rd,
 Portland, OR 97231

ISSUANCE
 LAND USE REVIEW
 PROJECT NUMBER
 023091
 DATE
 260220
 SCALE
 1"=20'-0"
 DRAWING TITLE
 SITE MATERIALS PLAN- EAST

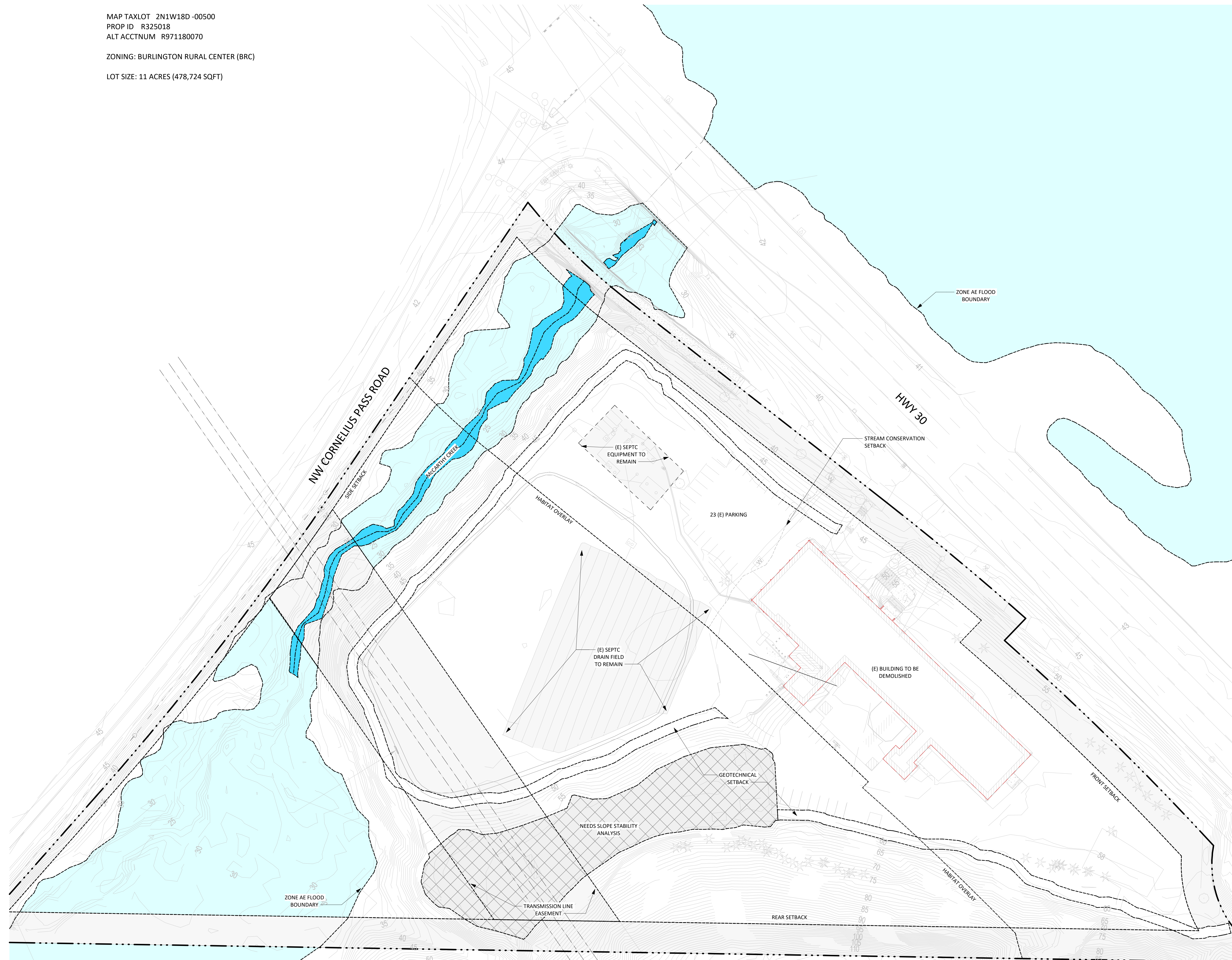
SHEET NUMBER

L112

1 SITE MATERIALS PLAN- EAST
 SCALE: 1"=20'-0"



MAP TAXLOT 2N1W18D-00500
 PROP ID R325018
 ALT ACCTNUM R971180070
 ZONING: BURLINGTON RURAL CENTER (BRC)
 LOT SIZE: 11 ACRES (478,724 SQFT)



1 SITE PLAN_EXISTING
 A-1.00 1" = 40'-0"

ARCHITECTS

HACKER

555 SE MLK Jr. Blvd. Suite 501, Portland, OR 97214

TAW
 TAWAW ARCHITECTURE COLLECTIVE INC.

1101 W University Dr, Tempe, AZ 85281

CONSULTANT

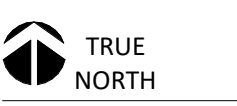
STAMP

**NOT FOR
 CONSTRUCTION**

REVISION NO.

DATE

KEY PLAN - (NTS)



NARA NW RTC



NARA NW
 17645 NW St Helens Rd.
 Portland, OR 97231

ISSUANCE
 LAND USE REVIEW

PROJECT NUMBER
 023091

DATE
 260220

SCALE
 1" = 40'-0"

DRAWING TITLE
 LU_SITE PLAN_EXISTING

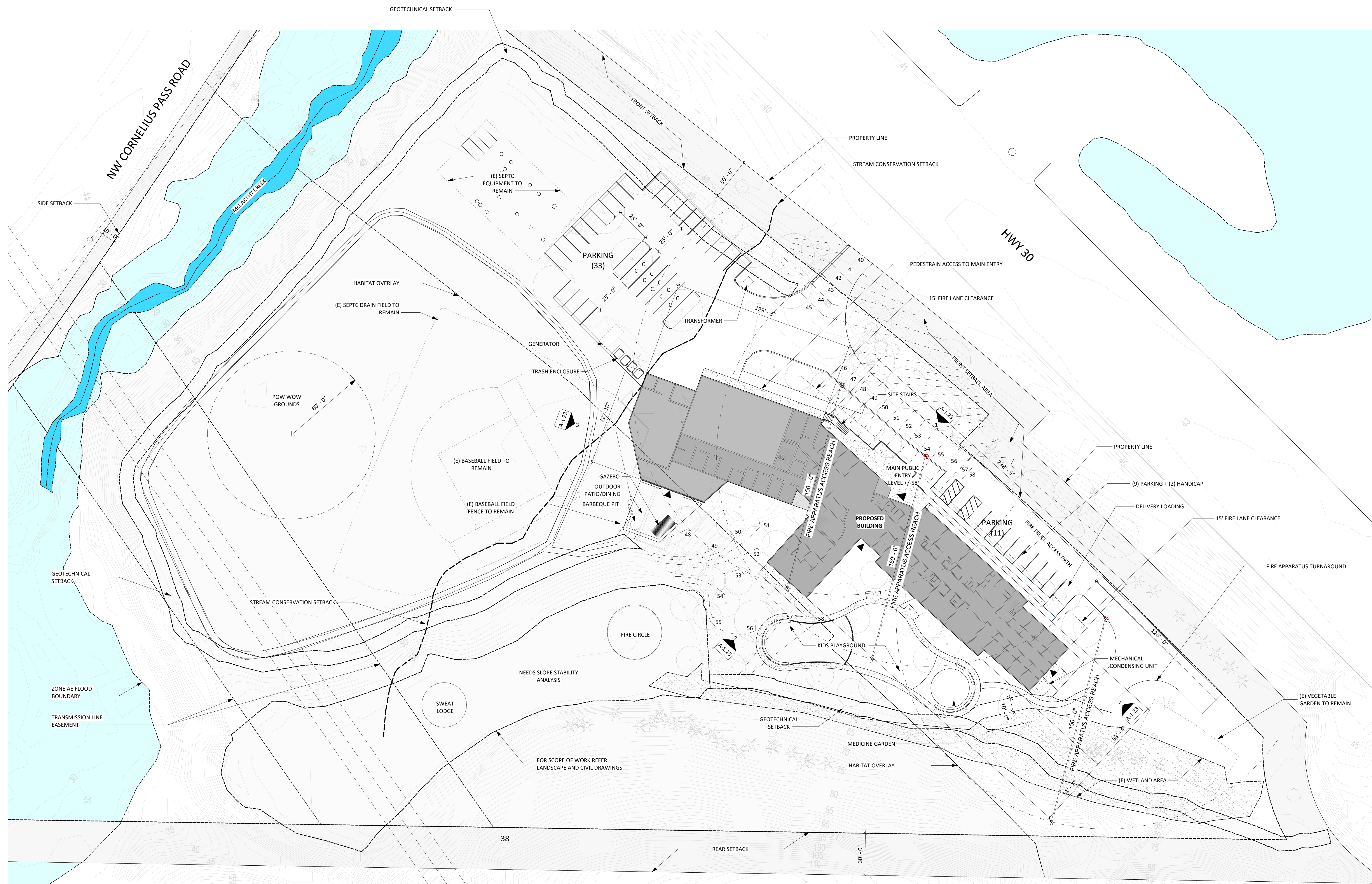
SHEET NUMBER

A-1.00

MINIMUM REQUIRED OFF-STREET PARKING (MCC 39.6590), OFF STREET LOADING (MCC 39.6595), AND ACCESSIBLE PARKING (ORS 447.233)

	REQUIRED	PROVIDED
GROUP CARE FACILITY - 1 / 4 BEDS	70 BEDS 18	44 (34 PARKING + 10 COMPACT)
HOSPITAL LOADING - 1 / 5,000 - 39,999 SQFT	39,600 SQFT 1	1
ACCESSIBLE PARKING - 26- 50 SPACES	2	2

◀ BUILDING ENTRANCE / EXIT



1 SITE PLAN_NEW
A1.10 1" = 30'-0"

ARCHITECTS

HACKER

555 SE MLK Jr. Blvd. Suite 501, Portland, OR 97214

TAW
TAWAW ARCHITECTURE COLLECTIVE INC.

1101 W University Dr, Tempe, AZ 85281
CONSULTANT

STAMP

NOT FOR CONSTRUCTION

REVISION NO. DATE

KEY PLAN - (NTS)

TRUE NORTH
NARA NW RTC
NATIVE AMERICAN REHABILITATION ASSOCIATION OF THE NORTHWEST, INC.

NARA NW
17645 NW St Helens Rd.
Portland, OR 97231

ISSUANCE
LAND USE REVIEW

PROJECT NUMBER
023091

DATE
260220

SCALE
As indicated

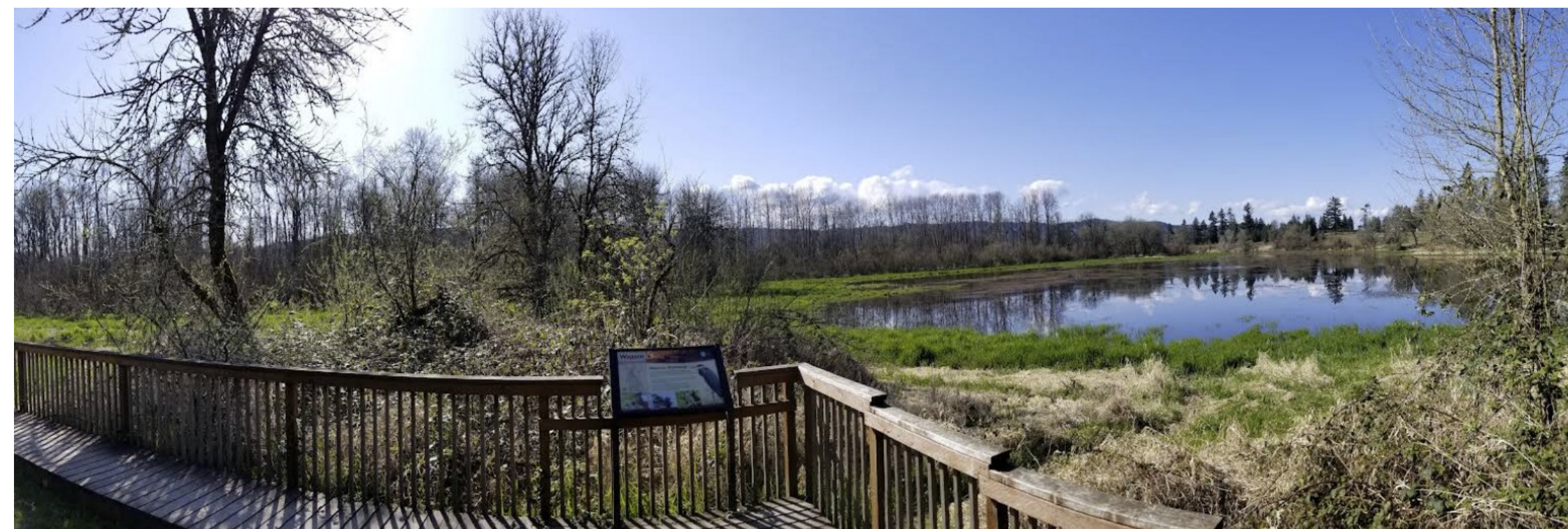
DRAWING TITLE
LU_SITE PLAN

SHEET NUMBER

A-1.10



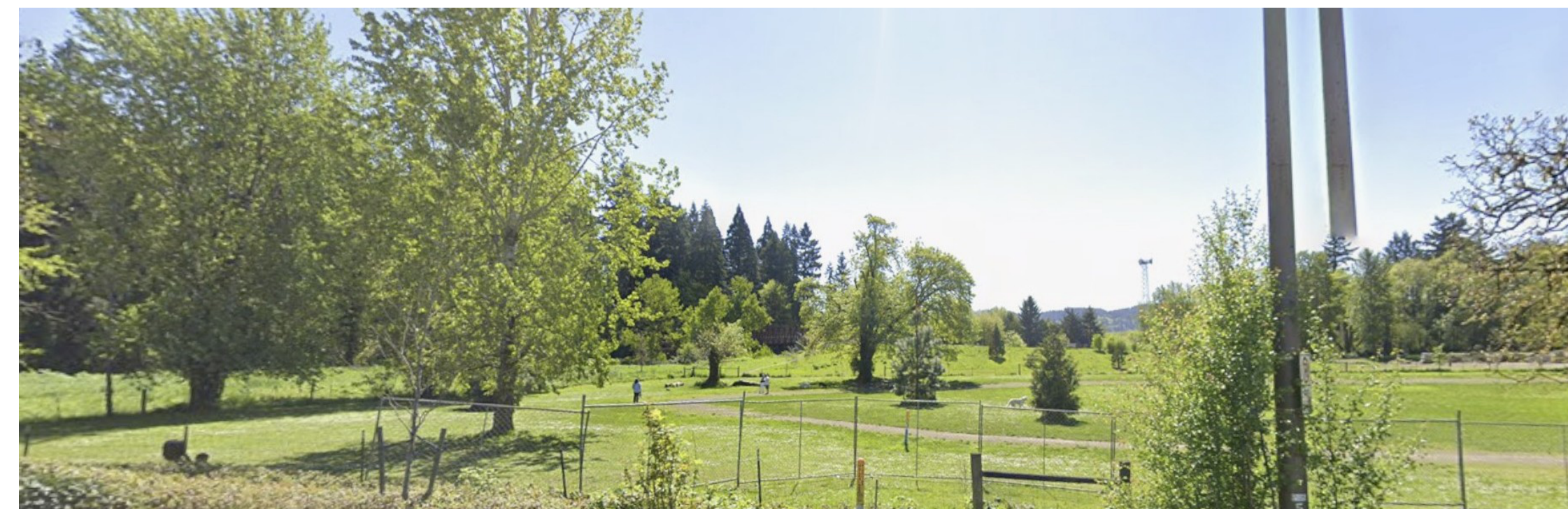
1. View from Bybee-Howell House



2. View from Virginia Lake



3. View from Sauvie Island Wildlife Refuge



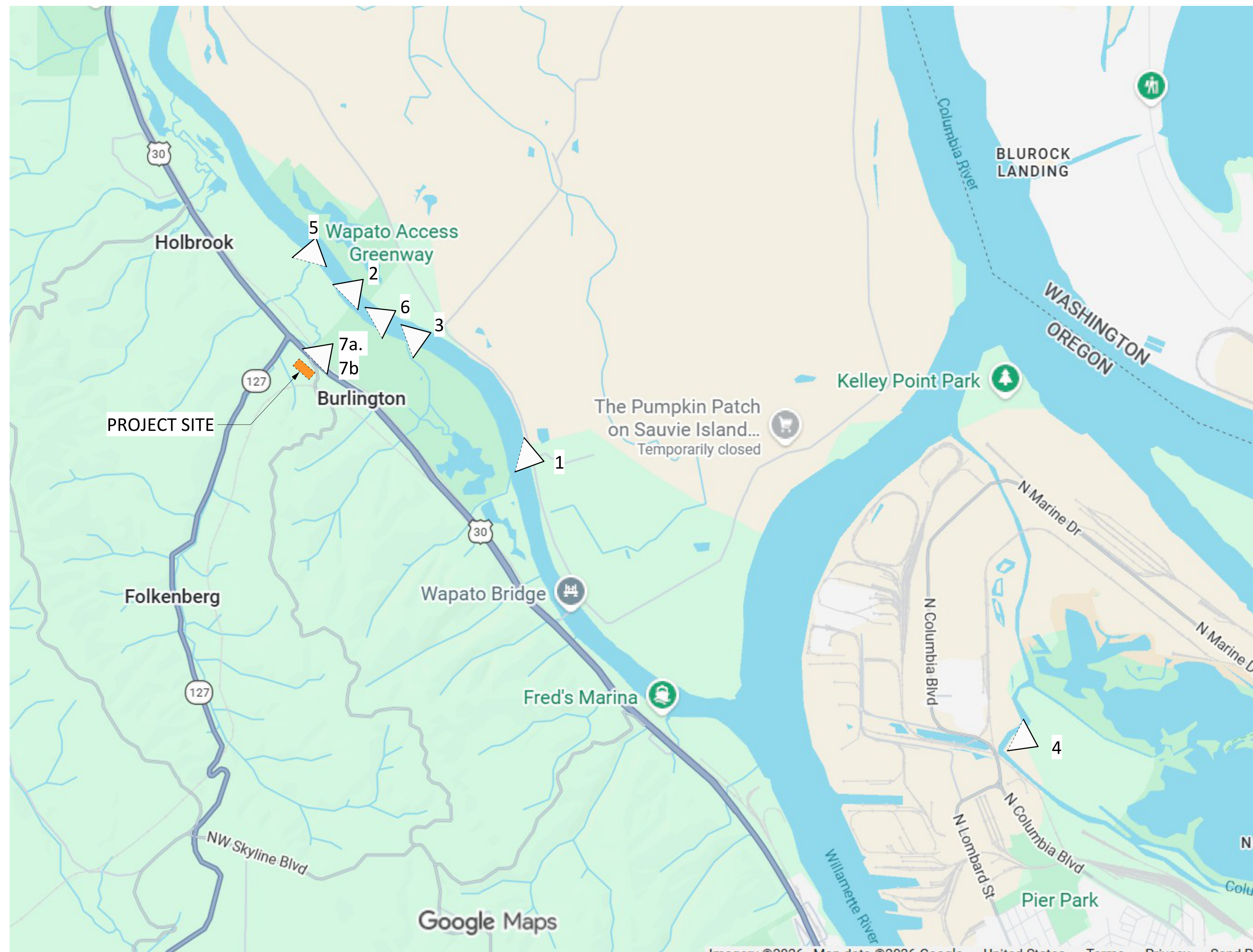
4. View from Smith and Bybee Lakes



5. View from the Multnomah Channel



6. View from public roads on Sauvie Island



7a. View from HWY 30



7b. View from HWY 30

STAMP

**NOT FOR
CONSTRUCTION**

REVISION NO.

DATE

KEY PLAN - (NTS)



NARA NW RTC



NARA NW
17645 NW St Helens Rd,
Portland, OR 97231

ISSUANCE
LAND USE REVIEW

PROJECT NUMBER
023091

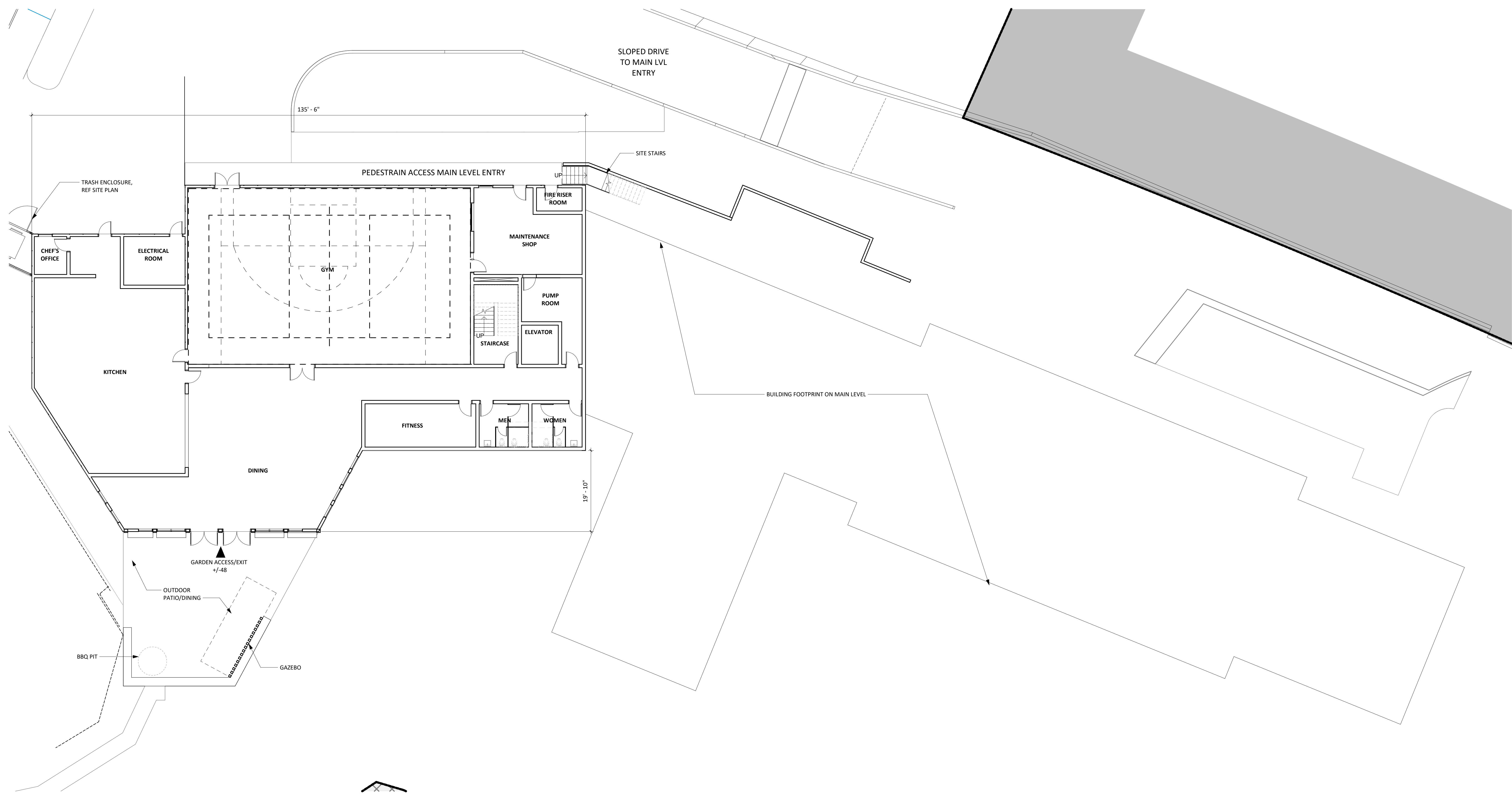
DATE
260220

SCALE
12" = 1'-0"

DRAWING TITLE
LU_SCENIC VIEWS TO
PROJECT

SHEET NUMBER

A-1.12



STAMP

**NOT FOR
CONSTRUCTION**

REVISION NO.

DATE

KEY PLAN - (NTS)



NARA NW RTC



NARA NW
17645 NW St Helens Rd,
Portland, OR 97231

ISSUANCE
LAND USE REVIEW

PROJECT NUMBER
023091

DATE
260220

SCALE
3/32" = 1'-0"

DRAWING TITLE
LU_ FLOOR PLAN
BASEMENT LEVEL

SHEET NUMBER

A-1.20

1 BASEMENT LVL PLAN
A-1.20 3/32" = 1'-0"

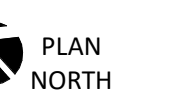
STAMP

**NOT FOR
CONSTRUCTION**

REVISION NO.

DATE

KEY PLAN - (NTS)



NARA NW RTC



NARA NW
17645 NW St Helens Rd.
Portland, OR 97231

ISSUANCE
LAND USE REVIEW

PROJECT NUMBER
023091

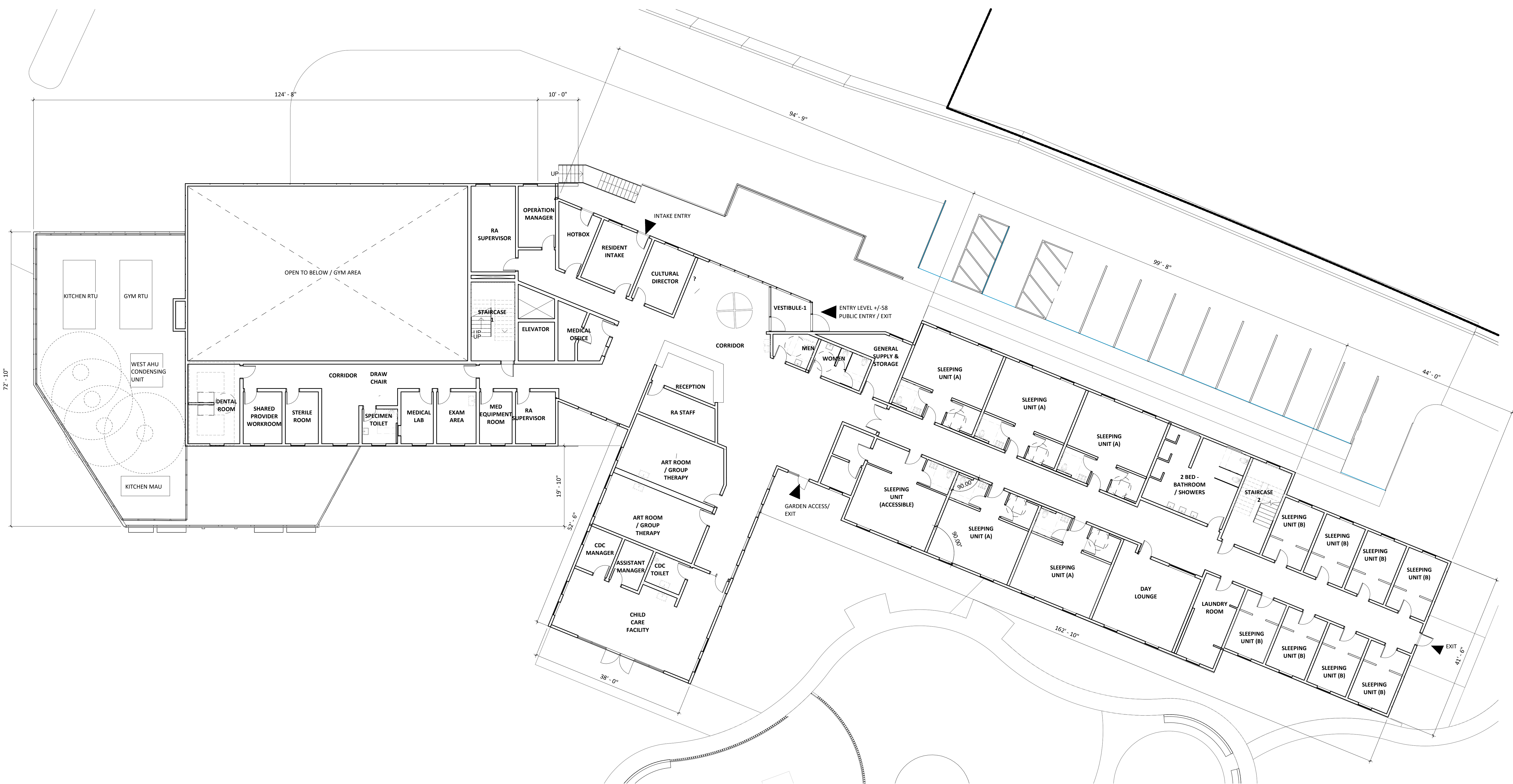
DATE
260220

SCALE
3/32" = 1'-0"

DRAWING TITLE
**LU_FLOOR PLAN - MAIN
LEVEL**

SHEET NUMBER

A-1.21



1 MAIN LVL PLAN
A-1.21
3/32" = 1'-0"

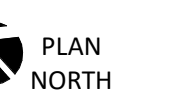
STAMP

**NOT FOR
CONSTRUCTION**

REVISION NO.

DATE

KEY PLAN - (NTS)



NARA NW RTC



NARA NW
17645 NW St Helens Rd.
Portland, OR 97231

ISSUANCE
LAND USE REVIEW

PROJECT NUMBER
023091

DATE
260220

SCALE
3/32" = 1'-0"

DRAWING TITLE
LU_FLOOR PLAN- TOP
LEVEL

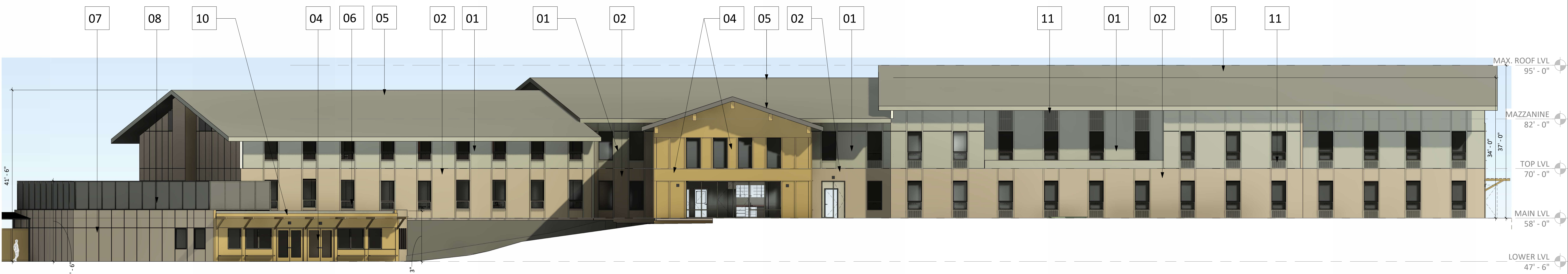
SHEET NUMBER

A-1.22

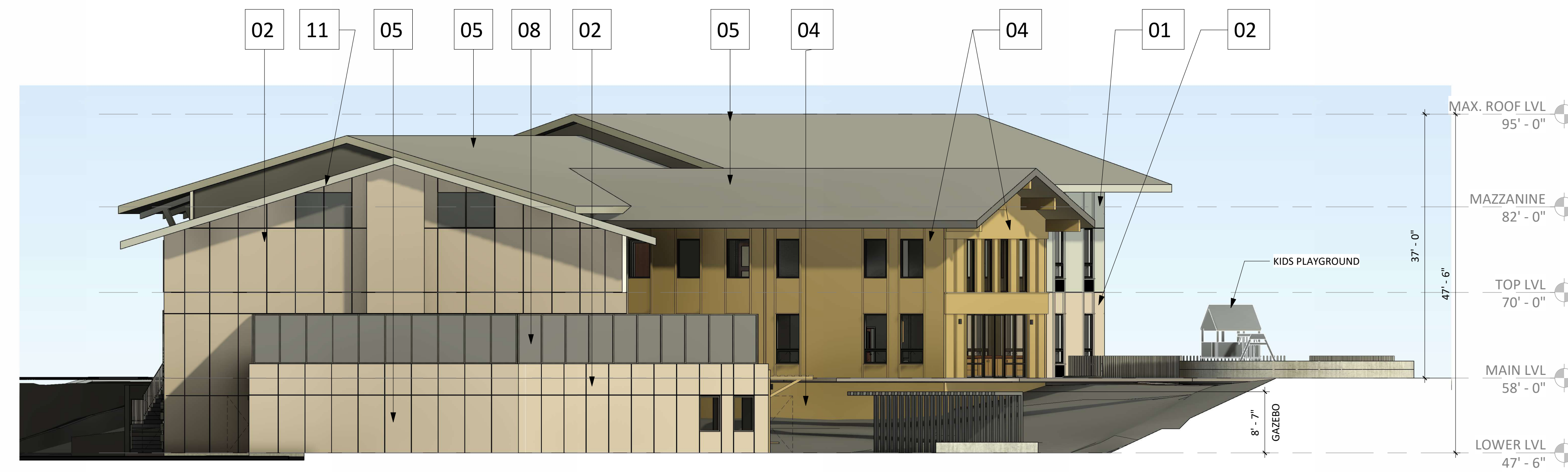




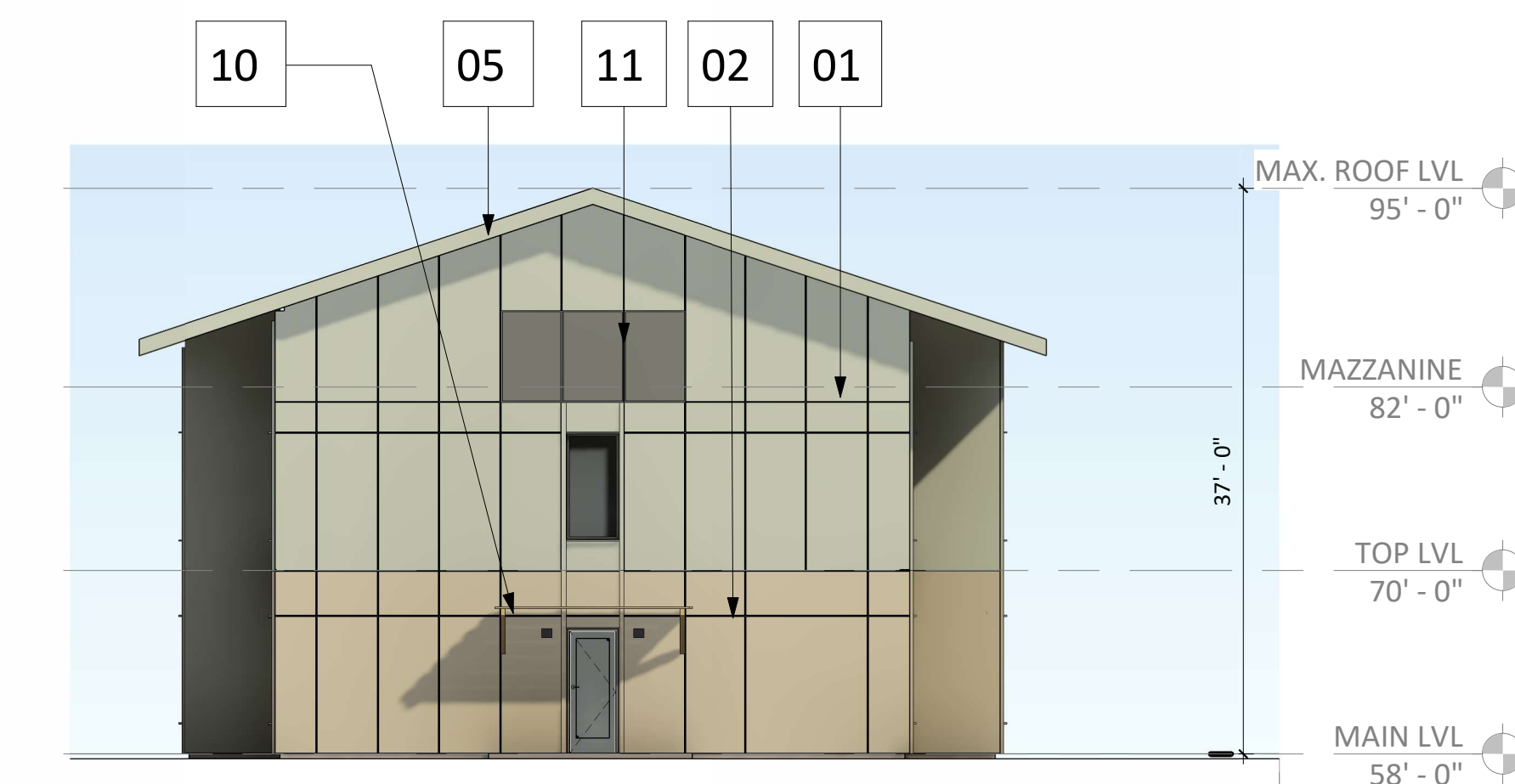
1 NORTH ELEVATION
A-1.23 3/32" = 1'-0"



2 SOUTH ELEVATION
A-1.23 3/32" = 1'-0"



3 EAST ELEVATION
A-1.23 3/32" = 1'-0"



4 WEST ELEVATION
A-1.23 3/32" = 1'-0"

KEY NUM.	MATERIALS AND COLOR
01	WOOD OR WOODLIKE SIDING AND TRIM COLOR: GRAY
02	WOOD OR WOODLIKE SIDING AND TRIM COLOR: TAUPE
03	WOOD OUTRIGGERS COLOR: GRAY
04	WOOD OR WOODLIKE SIDING AND TRIM COLOR: NATURAL WOOD TONE
05	ASPHALT SHINGLE ROOF COLOR: DARK GRAY
06	FLAT MEMBRANE ROOF
07	WOOD OR WOODLIKE PEDESTRIAN SCREEN COLOR: NATURAL WOOD TONE
08	METAL MECHANICAL SCREEN COLOR: GRAY OR TAUPE
09	STEEL PICKET GUARDRAIL COLOR: BLACK
10	WOOD OR WOODLIKE TRELLIS COLOR: NATURAL WOOD TONE
11	METAL MECHANICAL LOUVER COLOR: GRAY OR TAUPE TO MATCH ADJACENT WALL

STAMP

**NOT FOR
CONSTRUCTION**

REVISION NO.

DATE

KEY PLAN - (NTS)



NARA NW RTC



NARA NW
17645 NW St Helens Rd,
Portland, OR 97231

ISSUANCE
LAND USE REVIEW

PROJECT NUMBER
023091

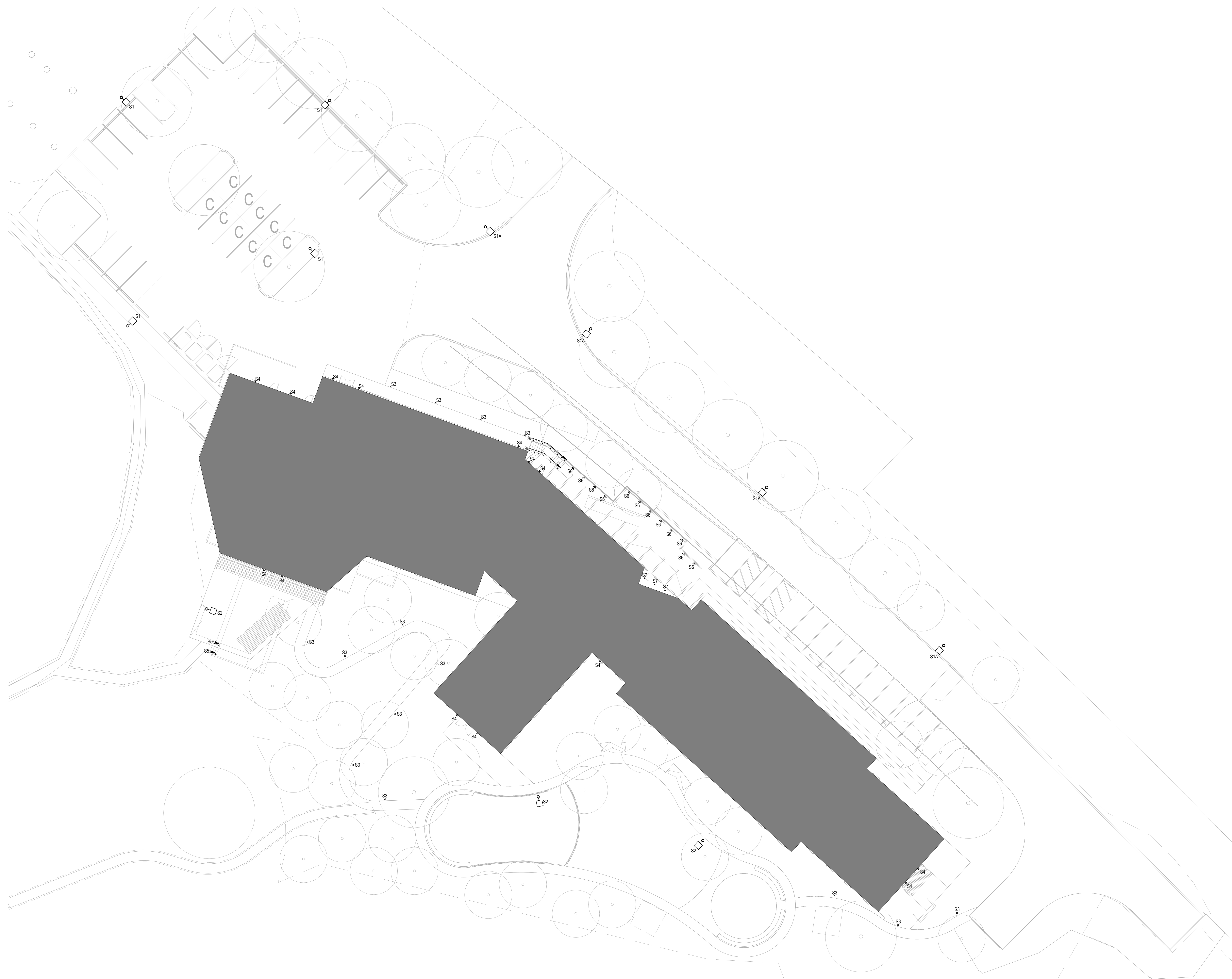
DATE
260220

SCALE
3/32" = 1'-0"

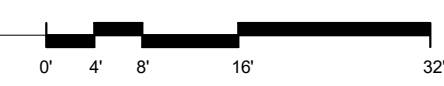
DRAWING TITLE
LU_EXTERIOR ELEVATIONS

SHEET NUMBER

A-1.23



1 ELECTRICAL LIGHTING SITE PLAN
1/16" = 1'-0"





ARCHITECTS
HACKER
 555 SE MLK Jr. Blvd. Suite 501, Portland, OR 97214

TAW
 TAWAW ARCHITECTURE COLLECTIVE INC.
 1101 W University Dr, Tempe, AZ 85281
 CONSULTANT

SAZAN
 GROUP
 111 SW Fifth Ave., Ste. 3210
 Portland, Oregon 97204
 Tel 503.416.2400
 Fax 503.416.2087
 SAZAN # D08-24003

STAMP
NOT FOR CONSTRUCTION
 REVISION NO. DATE

KEY PLAN - (NTS)


NARA NW RTC

NATIVE AMERICAN REHABILITATION ASSOCIATION OF THE NORTHWEST, INC.
 NARA NW
 17645 NW St Helens Rd.
 Portland, OR 97231
 ISSUANCE
 LAND USE REVIEW
 PROJECT NUMBER
 023091
 DATE
 260220
 SCALE
 1/16" = 1'-0"
 DRAWING TITLE
ELECTRICAL LIGHTING - SITE PLAN

SHEET NUMBER
E-104

2/20/2020 9:50:37 AM



TAW ARCHITECTURE COLLECTIVE INC.

1101 W University Dr, Tempe, AZ 85281

CONSULTANT



111 SW Fifth Ave., Ste. 3210
Portland, Oregon 97204

Tel 503.416.2400
Fax 503.416.2087
SAZAN # D08-24003

LUMINAIRE SCHEDULE									
TYPE	IMAGE	DESCRIPTION	MOUNTING	CCT / CRI	WATTS	DELIVERED LUMENS	DRIVER	DIMMING	VOLTAGE
S1		TYPE TBD DISTRIBUTION POLE LIGHT LED LUMINAIRE	20' POLE	3000K LED, 80+ CRI	TBDW	TBD LM	INTEGRAL ELECTRONIC	0-10V TO 10%	UNV
S1A		TYPE TBD DISTRIBUTION POLE LIGHT LED LUMINAIRE	15' POLE	3000K LED, 80+ CRI	TBDW	TBD LM	INTEGRAL ELECTRONIC	0-10V TO 10%	UNV
S2		TYPE TBD DISTRIBUTION POLE LIGHT LED LUMINAIRE	10' POLE	3000K LED, 80+ CRI	TBDW	TBD LM	INTEGRAL ELECTRONIC	0-10V TO 10%	UNV
S3		TYPE TBD DISTRIBUTION BOLLARD LED LUMINAIRE	24" BOLLARD	3000K LED, 80+ CRI	TBDW	TBD LM	INTEGRAL ELECTRONIC	0-10V TO 10%	UNV
S4		LOW PROFILE ARCHITECTURAL LED LUMINAIRE	WALL	3000K LED, 80+ CRI	TBDW	TBD LM	INTEGRAL ELECTRONIC	0-10V TO 10%	UNV
S5		ASYMMETRIC DISTRIBUTION SEAMLESS POINT SOURCE POD LED LUMINAIRE	HANDRAIL	3000K LED, 80+ CRI	TBDW	TBD LM	REMOTE	0-10V TO 10%	24VDC
S6		STEP LIGHT LED LUMINAIRE	RECESSED	3000K LED, 80+ CRI	TBDW	TBD LM	INTEGRAL ELECTRONIC	0-10V TO 10%	UNV
S7		IP65, 4 INCH DIAMETER DOWNLIGHT LED LUMINAIRE	RECESSED	3000K LED, 80+ CRI	TBDW	TBD LM	INTEGRAL ELECTRONIC	0-10V TO 10%	UNV

STAMP

**NOT FOR
CONSTRUCTION**

REVISION NO.

DATE

KEY PLAN - (NTS)



NARA NW RTC



NARA NW
17645 NW St Helens Rd.
Portland, OR 97231

ISSUANCE
LAND USE REVIEW

PROJECT NUMBER
023091

DATE
260220

SCALE

DRAWING TITLE
ELECTRICAL LIGHTING
SCHEDULES

SHEET NUMBER

E-601