

Dark Sky Lighting Standards (MCC 39.6850)

12424 NW Springville Road, Portland, OR 97229
Scott & Stacy Reed
(914) 391-6995



Bradford Night Sky Small Wall Lantern

946411BK-GL

[Black \(BK\)](#)

Dimensions: 6"W x 17.25"H x 7.5"E

Transitional meets modern with the Bradford Low Light Small Wall Lantern. The bold lines and an oversized ring in a Black finish adds classic curb appeal to your home. This fixture is designed for minimal light emissions and is part of our Rain or Shine Collection and backed by our five-year warranty.

Available Finishes:

- Black (BK)
- Black (BK)
- Oiled Bronze (OZ)
- Oiled Bronze (OZ)

TECHNICAL SPECS

Item Number: 946411BK-GL
Collection: Bradford
Item Description: 1 Light Outdoor Wall Lantern
Brand: Capital Lighting
Finish Description: Black
Available Finishes: BK, BK, OZ, OZ
Glass Description: Clear Glass

Number of Bulbs: 1
Max Watts Per Bulb: 7
Socket Base: GU10 Twist Lock
Recommended Bulb: GU10
Light Source: LED – lamp not included
Voltage: 120
Location Rating: Wet

MORE DETAILS

UPC: 841740166072
Dimensions: 6"W x 17.25"H x 7.5"E
Height: 17.25"
Width: 6"
Extension: 7.50"
Backplate Dimensions: 4.75"W x 6.25"H x 0.75"E
Junction: Ctr/Top of Fixture: 4.75"; Ctr/Btm: 12.50"
Weight: 4.50 lbs.
Glass Dimensions: 10.25"H x 4.75"W
Mounting Plate Shape: Rectangle
Fixture Orientation: Socket Down

Material: Metal & Glass
Category: Outdoor Wall Lantern
Country of Origin: China

FEATURES

- DIMENSIONS: Overall: 6"W x 17.25"H x 7.5"E; Backplate: 4.75"W x 6.25"H x 0.75"E
- DETAILS: The tapered top and oversized ring paired with Clear Glass panels create a transitional and modern look
- The Night Sky friendly fixture is designed for minimal light emission
- Bottom is open for easy access to bulb.
- FINISH: Part of the Rain or Shine series, the Black finish is a neutral, dark tone with a slightly coarse texture.
- BULBS: Designed to be dimmable and LED/CFL/Incandescent bulb compatible, this fixture uses 1 - 7 Watt (max) GU10 Twist Lock base bulbs (not included)
- It's shown here with a GU10 lamp.
- FEATURES: Rated for Wet locations; includes a 5-Year Manufacturer Warranty Against Rust and Fading.
- Outdoor Wall Lantern.

Style: Traditional
Fixture Shape: Square / Rectangle

RESOURCES

- [Tear Sheet \(PDF\)](#)
- [Assembly Sheet \(PDF\)](#)



Dark Sky Lighting Standards (MCC 39.6850)

CHAPTER 39 – MULTNOMAH COUNTY ZONING CODE

6-35

6.C.3 – EXTERIOR LIGHTING

§ 39.6850 DARK SKY LIGHTING STANDARDS.

(A) The purpose of the Dark Sky Lighting Standards in this Section is to protect and promote public health, safety and welfare by preserving the use of exterior lighting for security and the nighttime use and enjoyment of property while minimizing the obtrusive aspects of exterior lighting uses that degrade the nighttime visual environment and negatively impact wildlife and human health.

(B) The following exterior lighting is exempt from the requirements of paragraph (C) of this section:

(1) Lighting lawfully installed prior to October 22, 2016, provided that the building enlargement threshold in paragraph (C) of this section is not exceeded.

(2) Lighting used for safe pedestrian passage, installed at ground level (such as along walkways and stairs), provided that individual lights produce no more than 30 lumens.

(3) Lighting that shines for not more than 90 nights in any calendar year provided that individual lights produce no more than 70 lumens.

(4) Lighting which shines for not more than 60 nights in any calendar year associated with discrete farming practices as defined in ORS 30.930 and agricultural use as defined in OAR 603-095-0010, except that permanent lighting on buildings, structures or poles associated with farm practices and agricultural use is subject to the requirements of this section. For purposes of this exemption, “discrete farming practices” does not include farm stand or agri-tourism events or activities.

(5) Lighting which shines for not more than 60 nights in any calendar year associated with discrete forest practices as defined by ORS chapter 527 (The Oregon Forest Practices Act), except that permanent lighting on buildings, structures or poles associated with forest practices is subject to the requirements of this section.

(6) Lighting which shines for not more than 60 nights in any calendar year associated with theatrical, television, and performance activities. For purposes of this exemption, theatrical, television, and performance activities do not include farm stand or agri-tourism events or activities.

(7) Lighting in support of work necessary to protect, repair, maintain, or replace existing structures, utility facilities, service connections, roadways, driveways, accessory uses and exterior improvements in response to emergencies pursuant to the provisions of MCC 39.6900, provided that after the emergency has passed, all lighting to remain is subject to the requirements of this section.

(8) Lighting used by a public agency in service of a temporary public need, when such lighting cannot both serve the public need and comply with the standards in paragraph (C) of this section.

(9) Lighting required by a federal, state, or local law or rule, when such lighting cannot comply with both the law or rule and the standards in paragraph (C) of this section.

(10) Lighting used in support of public agency search and rescue and recovery operations.

(11) Traffic control devices in compliance with the Manual on Uniform Traffic Control Devices, when such lighting cannot both serve the public need and comply with the standards in paragraph (C) of this section.

(12) Lighting necessary to meet federal, state or local historic preservation standards when such lighting cannot both meet historic preservation standards and comply with the standards in paragraph (C) of this section.

(13) Underwater lighting.

(14) Lighting of national, state, and local recognized jurisdiction flags pursuant to the United States Flag Code or laws regulating the proper display of jurisdiction flags.

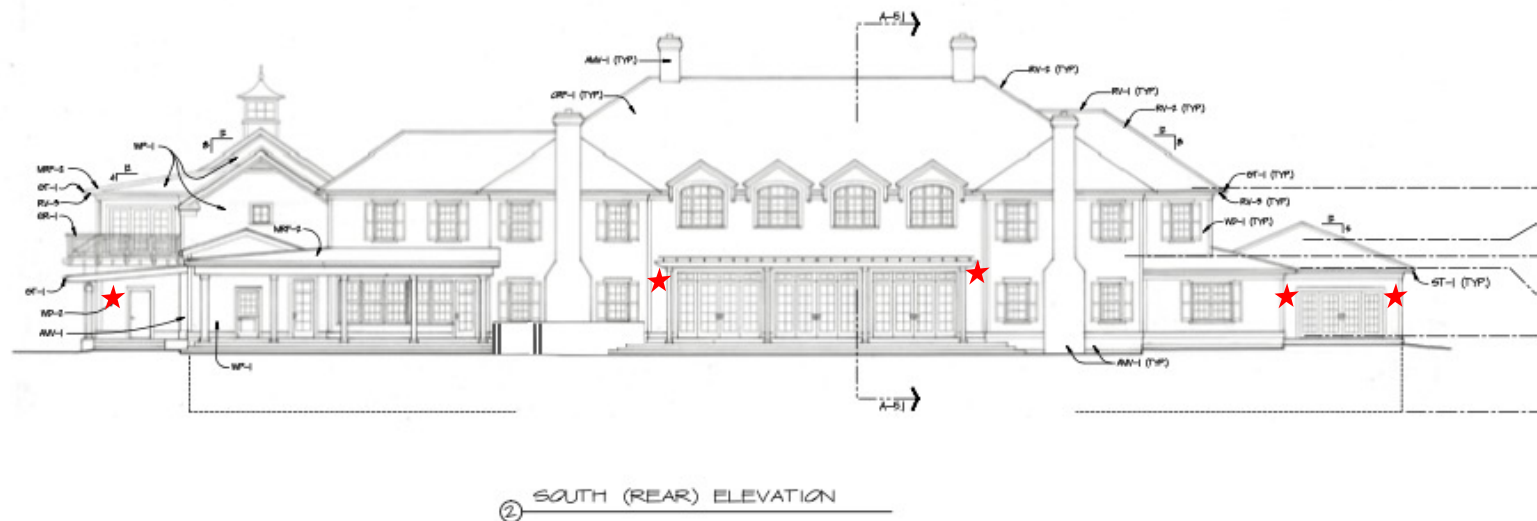
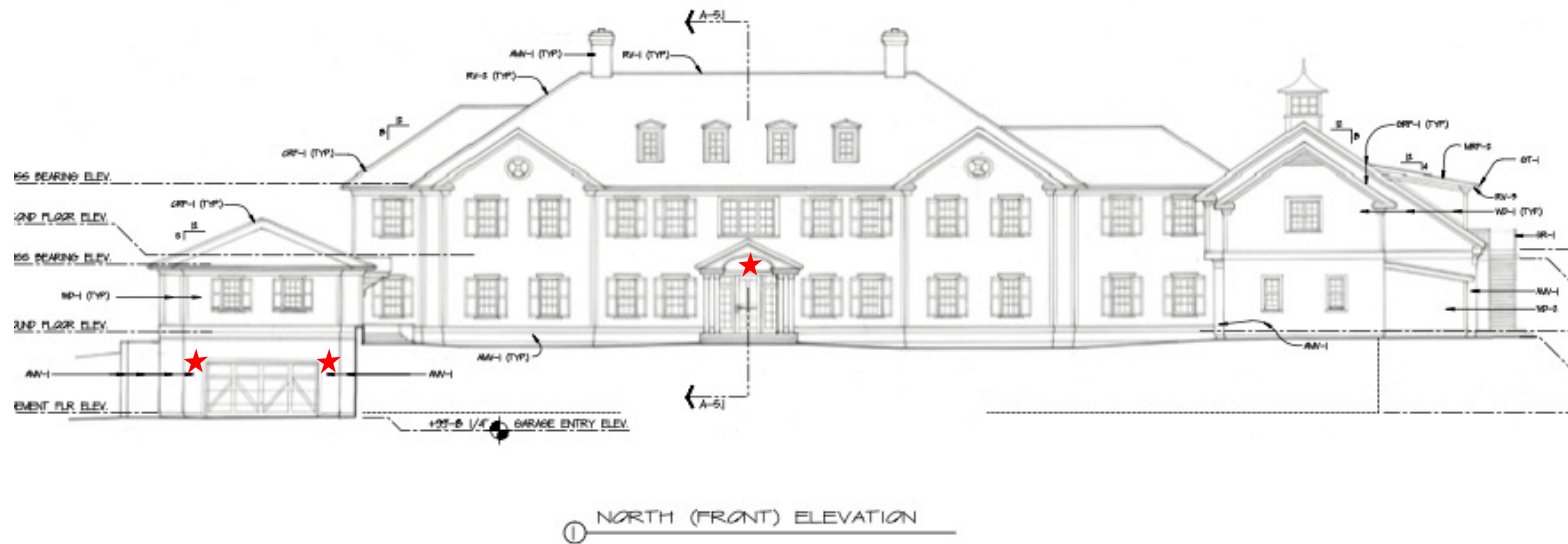
(C) The following standards apply to all new exterior lighting supporting a new, modified, altered, expanded, or replaced use approved through a development permit and to all existing exterior lighting on property that is the subject of a development permit approval for enlargement of a building by more than 400 square feet of ground coverage.

(1) The light source (bulbs, lamps, etc.) must be fully shielded with opaque materials and directed downwards. “Fully shielded” means no light is emitted above the horizontal plane located at the lowest point of the fixture’s shielding. Shielding must be permanently attached.

(2) The lighting must be contained within the boundaries of the Lot of Record on which it is located. To satisfy this standard, shielding in addition to the shielding required in paragraph (C)(1) of this section may be required.

(Ord. 1309, Amended, 08/18/2022)

Dark Sky Lighting Standards (MCC 39.6850)

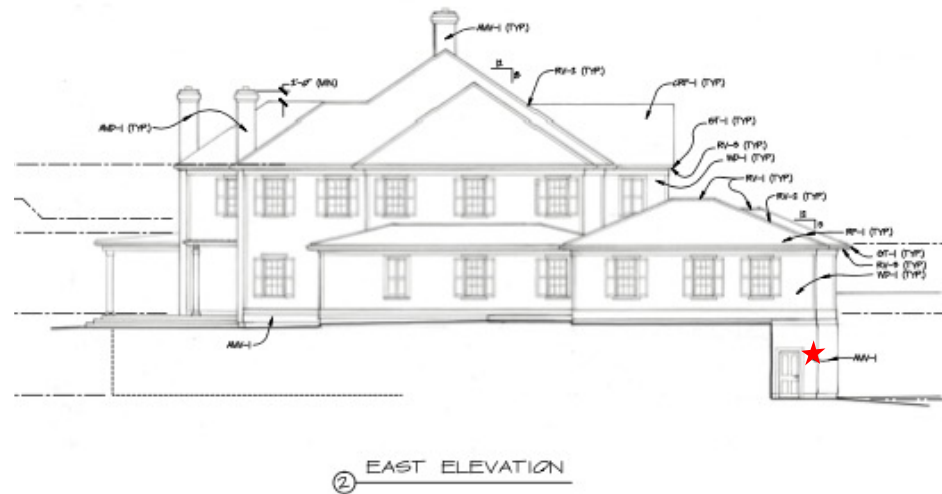
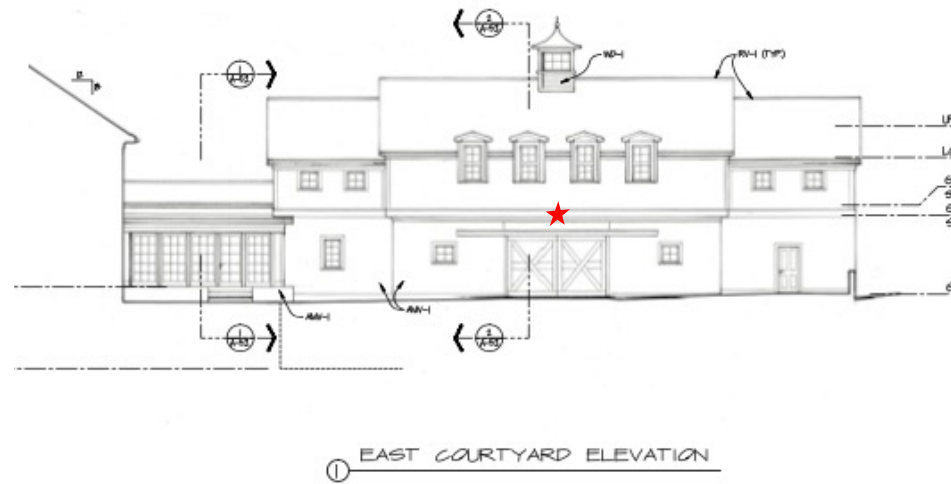


KEY NOTES

CRF-1 CEDAR SHINGLES

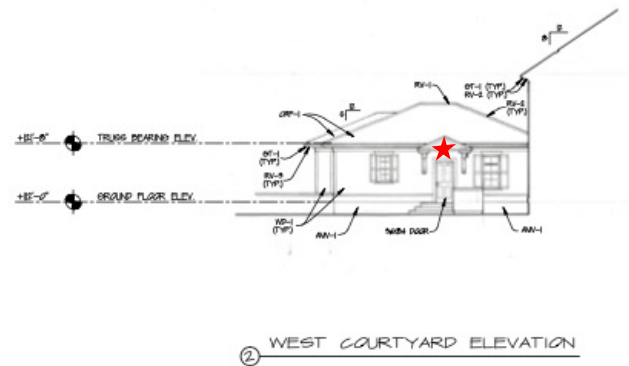
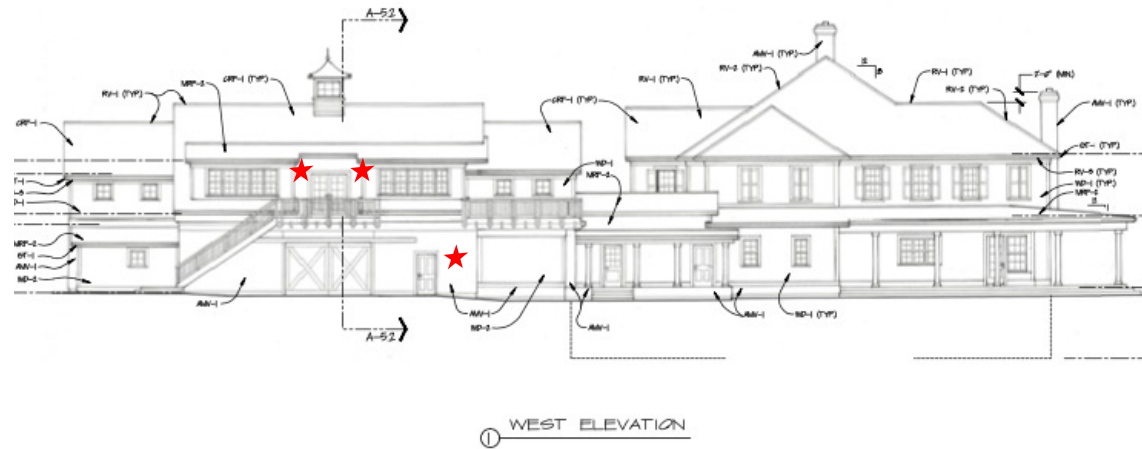
★ Location of exposed exterior light fixture (excludes ground lights , walkway lights, stair lights and individual lights under 30 lumens)

Dark Sky Lighting Standards (MCC 39.6850)



★ Location of exposed exterior light fixture (excludes ground lights , walkway lights, stair lights and individual lights under 30 lumens)

Dark Sky Lighting Standards (MCC 39.6850)



★ Location of exposed exterior light fixture (excludes ground lights , walkway lights, stair lights and individual lights under 30 lumens)