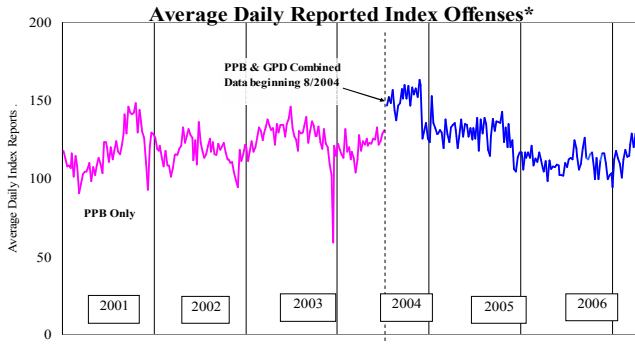


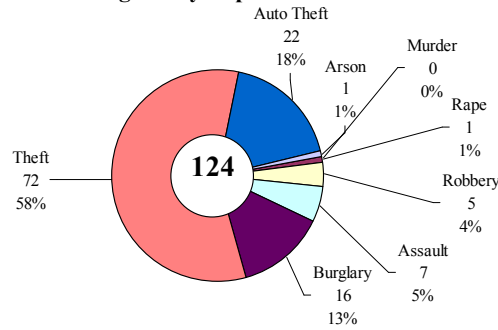
SAFETY PRIORITY BRIEF: APRIL 2007

Multnomah County: Reported Index Offenses



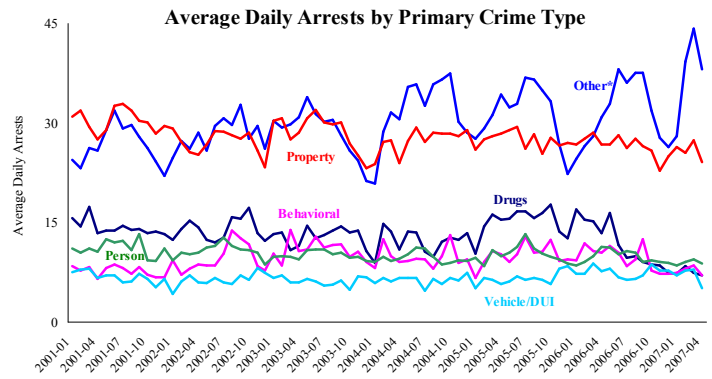
*The graph reflects the combined weekly index offenses data from Portland Police Bureau (PPB) and Gresham Police Dept (GPD), beginning 8/2004 (line in blue). According to LEDS (2005) data PPB and GPD account for 95% of all offenses county-wide. Index offenses account for about half of all reported offenses.

Average Daily Reported Index Offenses*



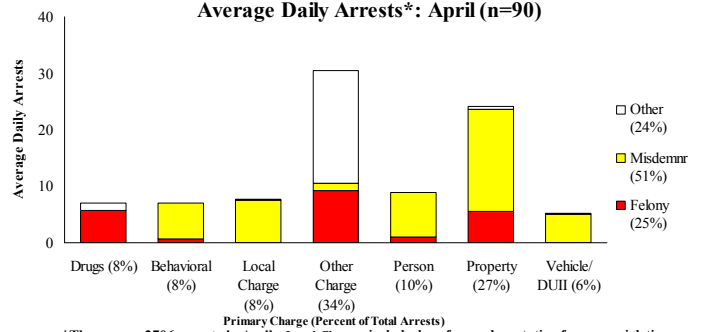
*Portland and Gresham, combined 4-week moving average for the week ending 4-28-07.

Multnomah County: Portland Arrests



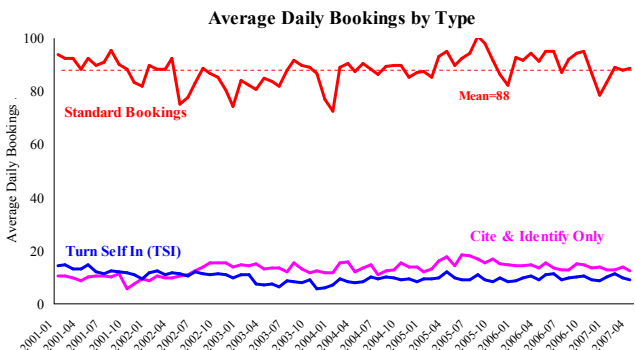
*Other largely reflects fugitive/warrant charges and local ordinances (DFZ/PFZ). PPB data only, downloaded 5-15-2007.

Average Daily Arrests*: April (n=90)



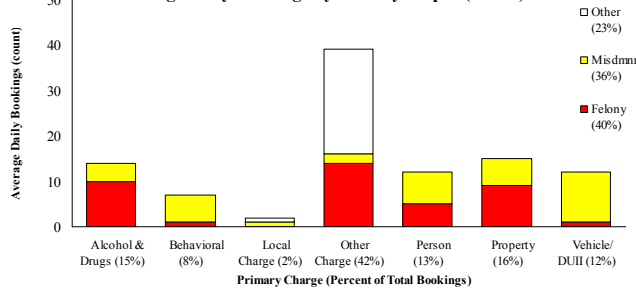
*There were 2706 arrests in April. Local Charges include drug-free and prostitution free zone violations.

Sheriff: Bookings



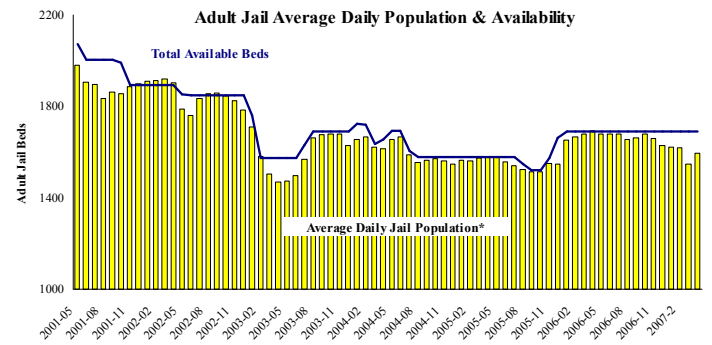
*In-transit bookings are not reported herein and account for ~4% of all bookings. April's average length of stay (ALS) per booking was 18.58 days.

Average Daily Bookings by Severity*: April (n=101)



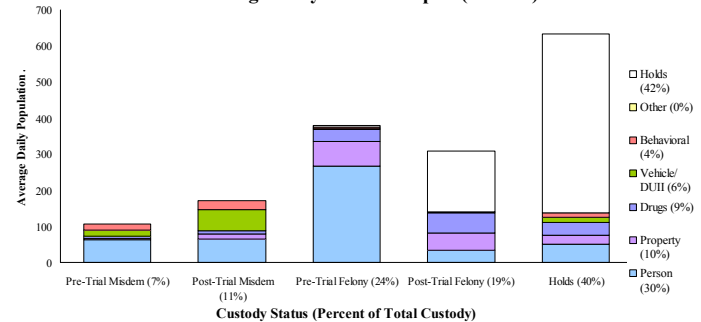
*Excludes Cite & ID. Total of 3025 bookings (100.8/day) through 4/30/07. Corrections Health reported psych-alerts (16.3/day) for the entire month of April.

Sheriff: Custody- Adult Jail Beds



*Excludes in-transit custody classifications. The MCSO reported 36 matrix releases for April (1.2/day).

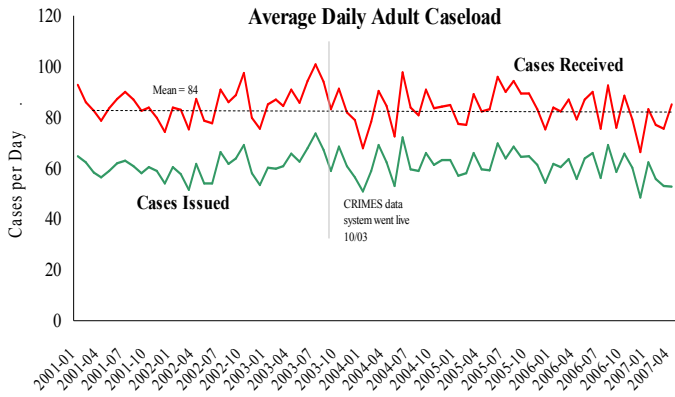
Average Daily Bed Use: April (n=1596)



Average Daily Jail System Capacity=1690. Average Daily Population (ADP)=1596; there were 94 available beds on any given day.

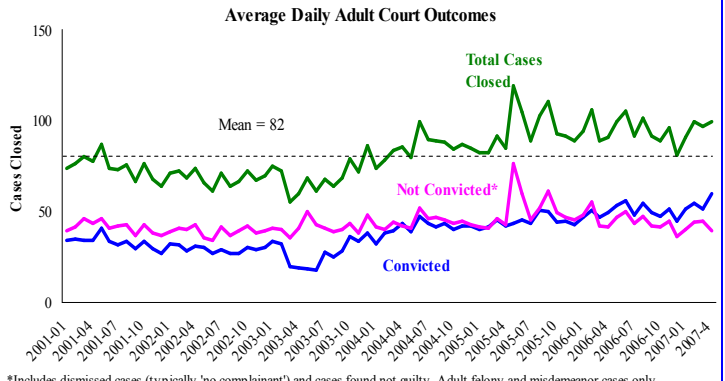
Notes: The increase in the Other category for Arrests, which started in January, continued and can be attributed to an increase in the number of Fugitive and Bench Warrant Bail Jump charges. Auto theft and Larceny were the main forces driving the increase in index offenses in 2007. Matrix Releases restarted with 36 in April, after two months' zero release.

District Attorney: Adult Caseload



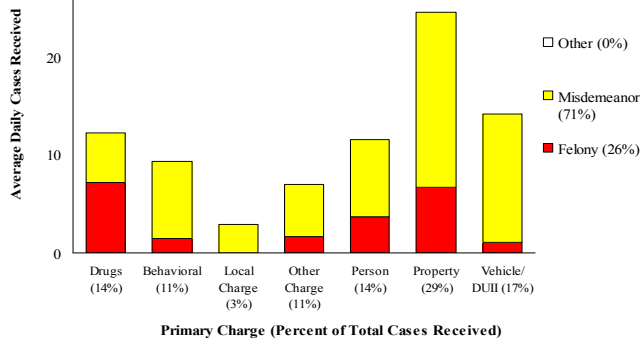
*Data retrieved 5/15/2007 Note: Many recently received cases are pending review.

Court Processes: Sentencing Outcomes



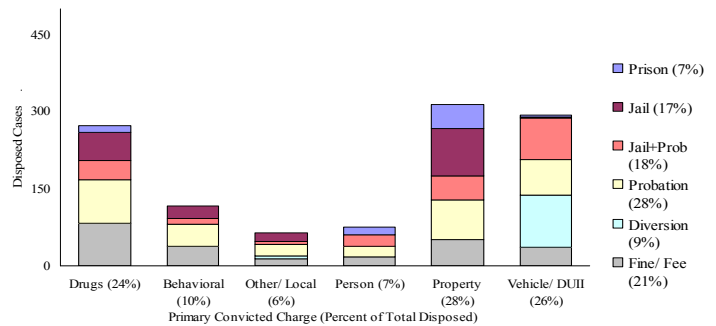
*Includes dismissed cases (typically 'no complainant') and cases found not guilty. Adult felony and misdemeanor cases only.

Average Daily Received Cases*: April (n=85)



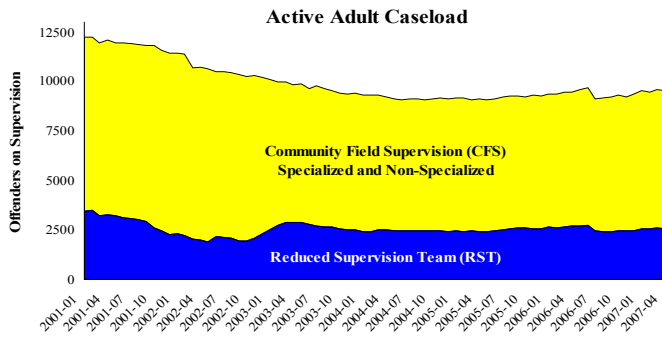
*April had 2553 received cases as of 5-15-2007 (85/day). Of those, 520 cases were pending review.

Disposition Type by Primary Conviction*: April 2007

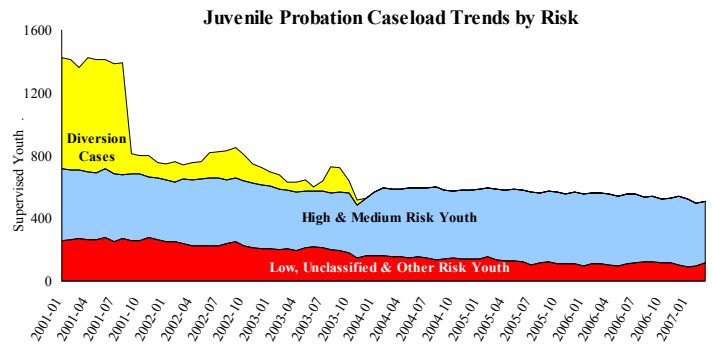


*Sentenced adult felony and misdemeanors primary convictions only. Primary conviction charge is the most serious charge with a conviction and may differ from the original primary charge. April had 1,798 convictions; 27% were felonies.

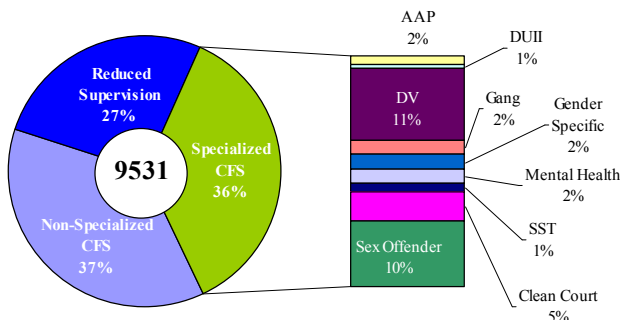
Adult Community Supervision: Caseloads



Juvenile Community Supervision: Caseloads

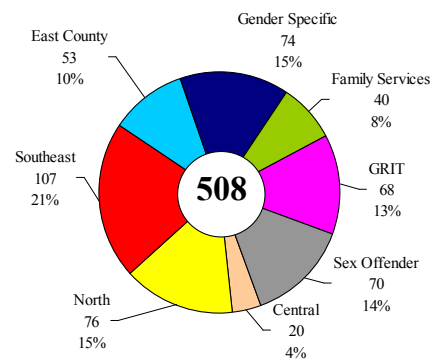


Adult Active Caseload by Type*: April 2007



*Less than 1% are "other" cases which have been included as non-specialized.

Juvenile Justice Caseload by Unit*: March 2007



*The average caseload per counselor was 21.6 cases for March.

Notes: April saw a drop in the number of convictions from the previous month; although a larger proportion of these were felonies. Also of note was the increase in Drug related convictions from 18% in March to 24% in April. There was also an increase in the number of Juvenile Community Supervision Caseloads; up from 495 to 508.