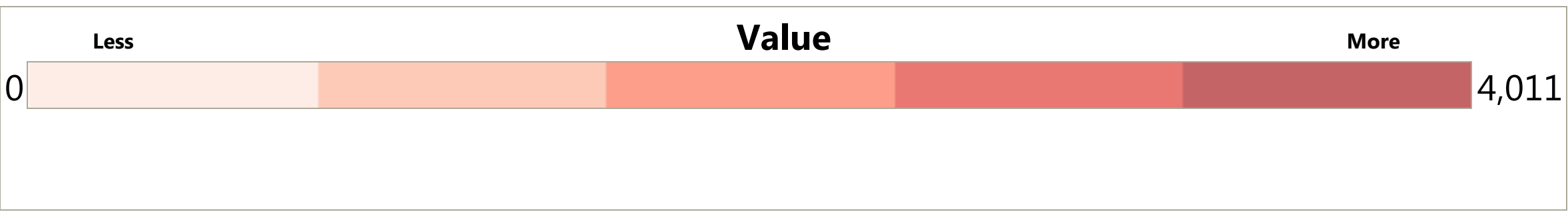


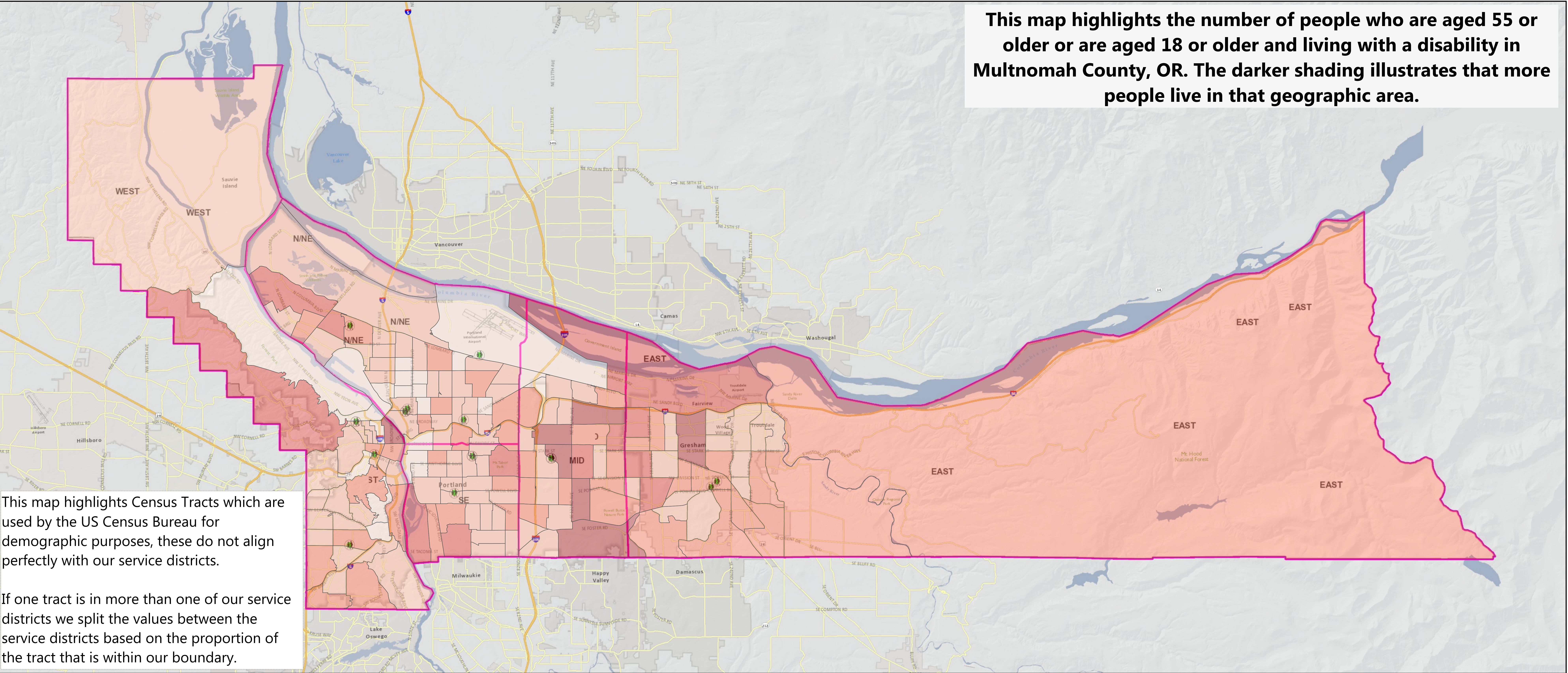
# Aging & Diversity Profile by Region



Figures based on 2014 American Community Survey 5-yr estimates by 2010 Census Tracts. Figures are estimates, boundaries are approximate.



This map highlights the number of people who are aged 55 or older or are aged 18 or older and living with a disability in Multnomah County, OR. The darker shading illustrates that more people live in that geographic area.



This map highlights Census Tracts which are used by the US Census Bureau for demographic purposes, these do not align perfectly with our service districts.

If one tract is in more than one of our service districts we split the values between the service districts based on the proportion of the tract that is within our boundary.

## Measures selected that result in map shading:

	Branch					Grand Total	% of Population
	EAST	MID	N/NE	SE	WEST		
Population AGE 55-59	9,743	9,542	10,866	8,387	10,044	48,582	6.41%
Population AGE 60-64	8,225	8,274	11,067	7,037	9,495	44,099	5.82%
Population AGE 65-74	9,940	9,559	10,269	7,611	10,834	48,213	6.37%
Population AGE 75-84	5,633	5,958	4,520	3,307	4,153	23,572	3.11%
Population AGE 85+	2,266	4,061	2,261	2,053	2,439	13,080	1.73%
DISABILITY (18-64)	12,985	13,474	12,586	9,188	7,523	55,756	7.36%
DISABILITY (65-74)	3,052	2,947	2,882	1,962	1,686	12,529	1.65%
DISABILITY (75+)	4,183	5,659	3,538	2,930	3,133	19,443	2.57%

## More information about Multnomah County:

	Branch					Grand Total	% of Population
	EAST	MID	N/NE	SE	WEST		
60+ Population	26,064	27,852	28,118	20,008	26,922	128,964	17.03%
Population	153,863	159,114	184,868	126,962	132,564	757,371	100.00%
Median Age	30	28	30	26	32	29	100.00%
Disabled Adults	16,038	16,421	15,468	11,150	9,208	68,285	9.02%
Poverty (Below 185% FPL)	57,545	70,332	59,585	37,569	30,777	255,808	33.78%
HH with Person 60+ Receiving SNAP	769	952	1,573	1,043	1,019	5,356	0.71%
55+ Population	35,807	37,394	38,984	28,396	36,965	177,546	23.44%
55+ Poverty (Below 185% FPL)	9,008	12,298	11,760	7,636	7,425	48,127	6.35%
55+ Hispanic	1,455	1,270	1,993	914	970	6,602	0.87%
55+ African-American / Black	1,180	1,453	4,974	261	431	8,299	1.10%
55+ American Indian / Alaskan Native	302	326	280	132	263	1,304	0.17%
55+ Asian	2,697	7,481	2,798	3,904	1,789	18,669	2.46%
55+ Native Hawaiian / Pacific Islander	189	103	383	19	37	731	0.10%
55+ Other Race	436	595	722	415	521	2,689	0.36%
55+ Two or More Races	352	362	608	99	259	1,680	0.22%