



**Multnomah County Aging, Disability,
and Veterans Services Division
2017-2020 Area Plan
Planning & Development**

Area Agency on Aging

Core Services


- Information & Assistance (ADRC)
- Access to Public Benefits (SNAP, Medicaid)
- Medicare Counseling
- Case Management & Options Counseling
- Transportation & Coordination
- Nutrition Services (congregate & home-delivered meals)
- Health Promotion & Disease Prevention
- Family Caregiver Support
- Legal Services
- Elder Abuse Prevention

Five District Senior Centers

Eight Enhancing Equity Partners

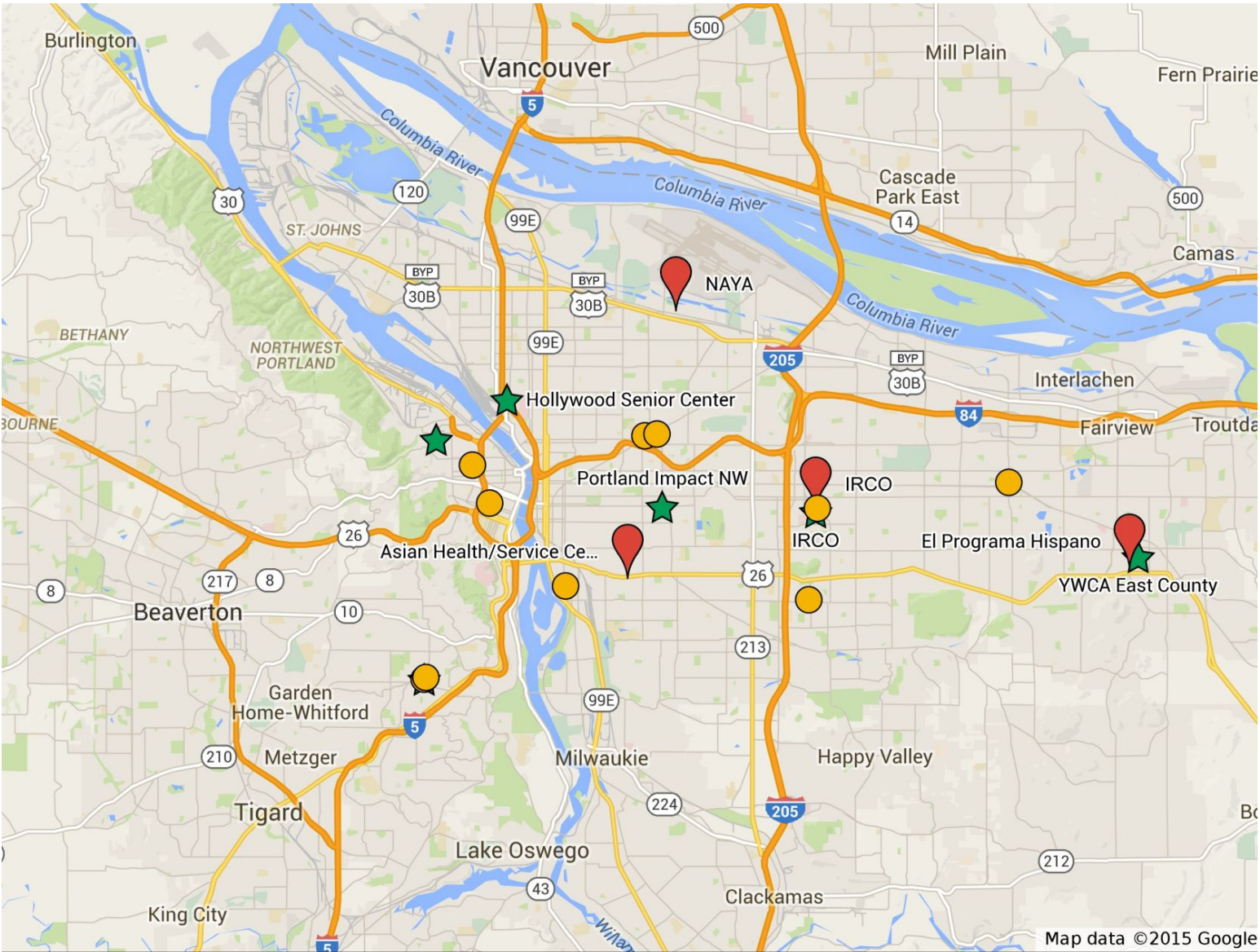
- N/NE– Hollywood Senior Center
- East– YWCA/Impact NW
- Mid – IRCO
- Southeast– Impact NW
- West – Neighborhood House (Elm Court)
- Urban League of Portland (NE Multicultural SC)
- African American Health Coalition (Charles Jordan & Dishman)
- Asian Health & Service Center
- El Programa Hispano Católico
- NAYA Family Center
- Friendly House

Senior Nutrition Sites

 Culturally-specific meal sites

 District Center-based meal sites

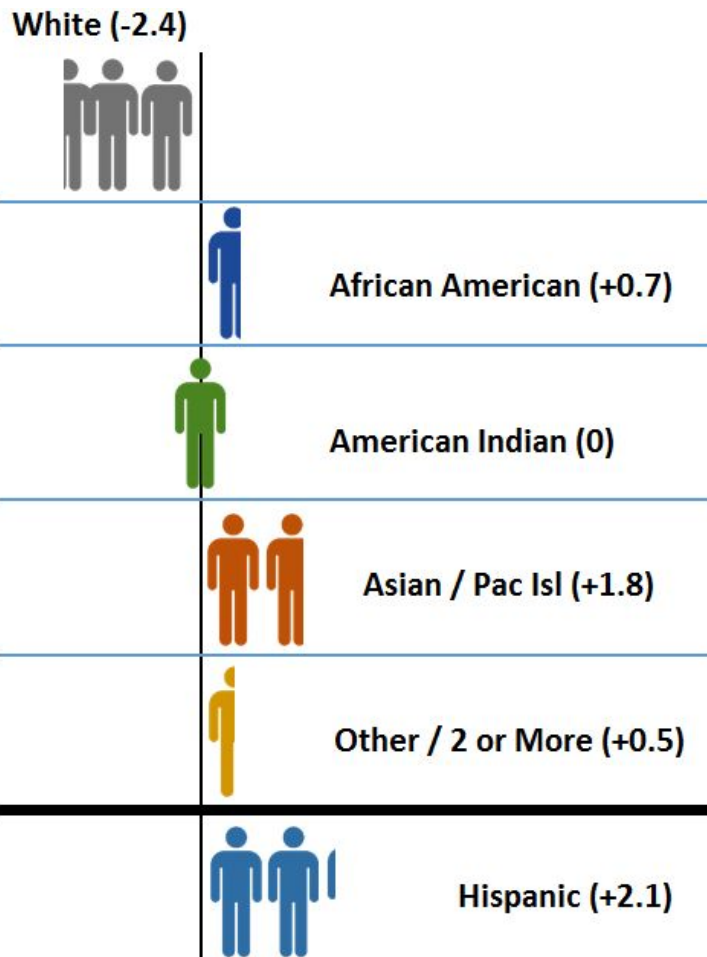
 MOWP



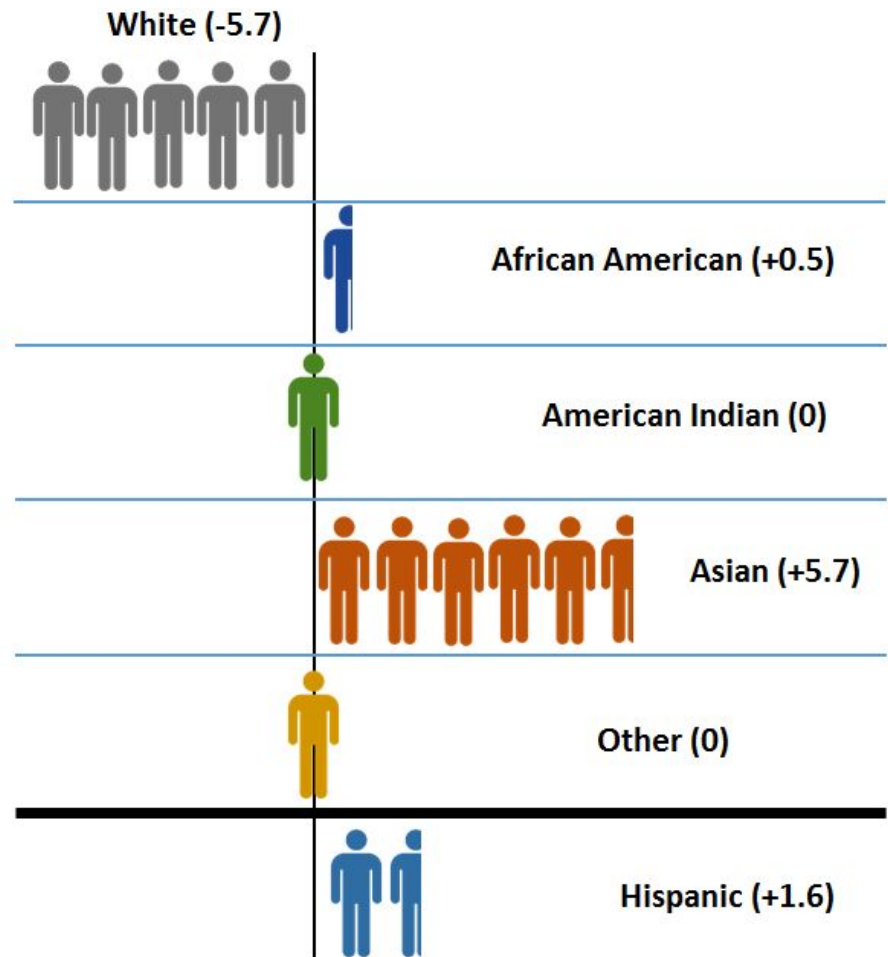
Changes aging population (2010-2025)

Percent of total population

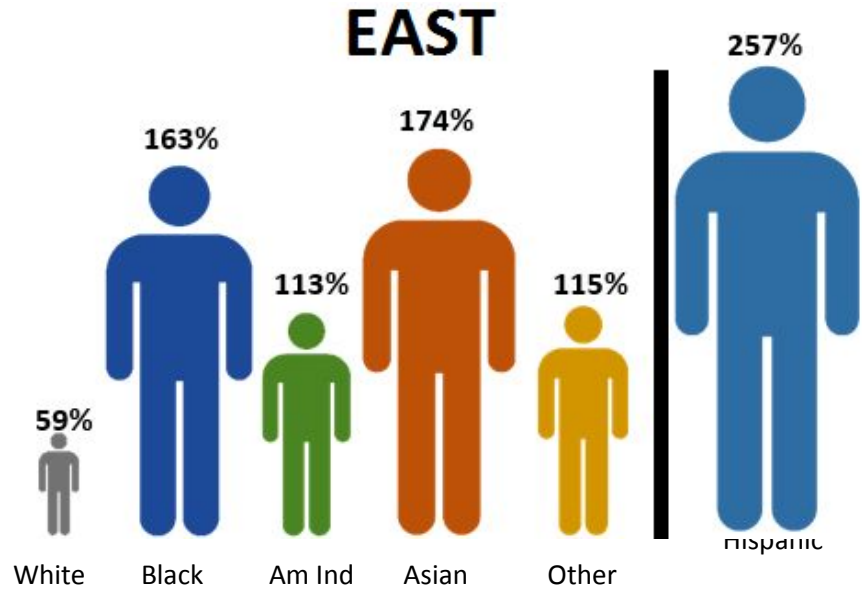
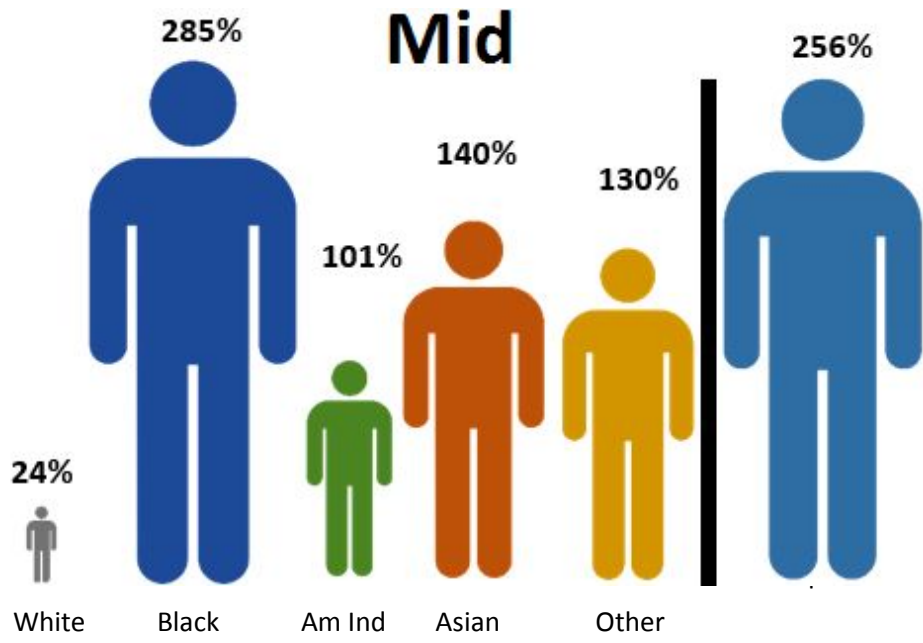
Population Aged 60+



Population Aged 85+

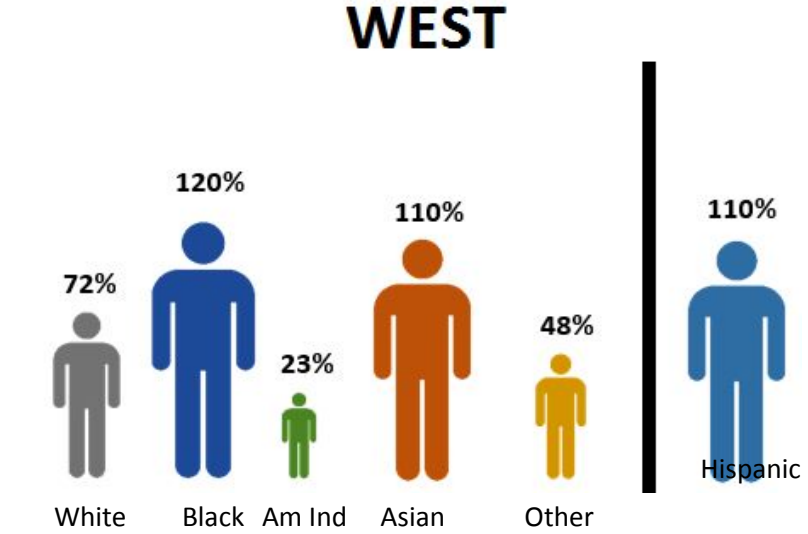
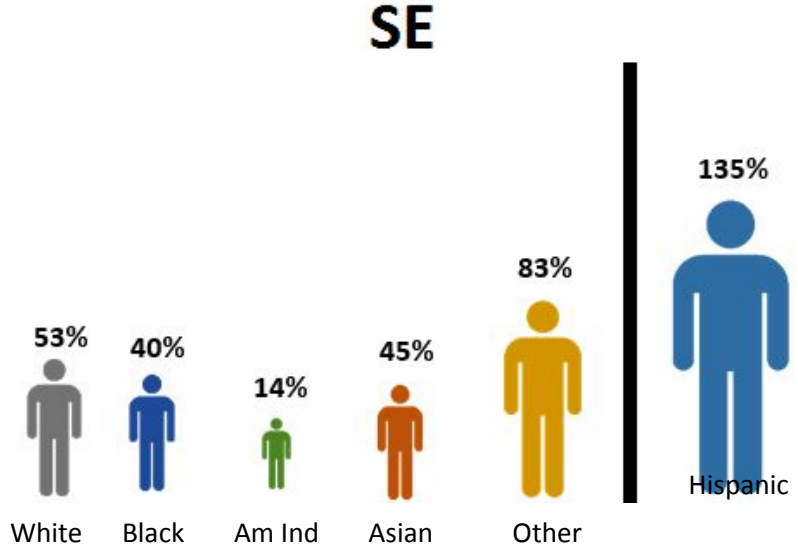
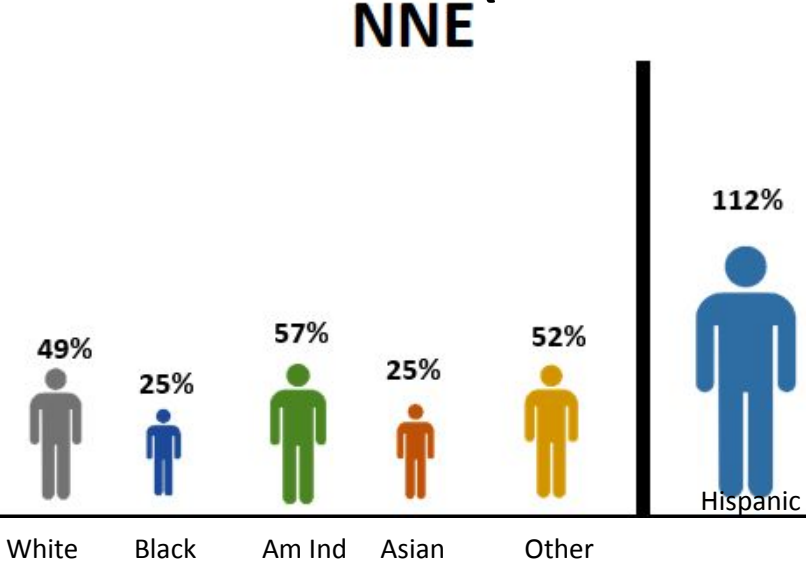


60+ Population Change By Region (Large Movers)



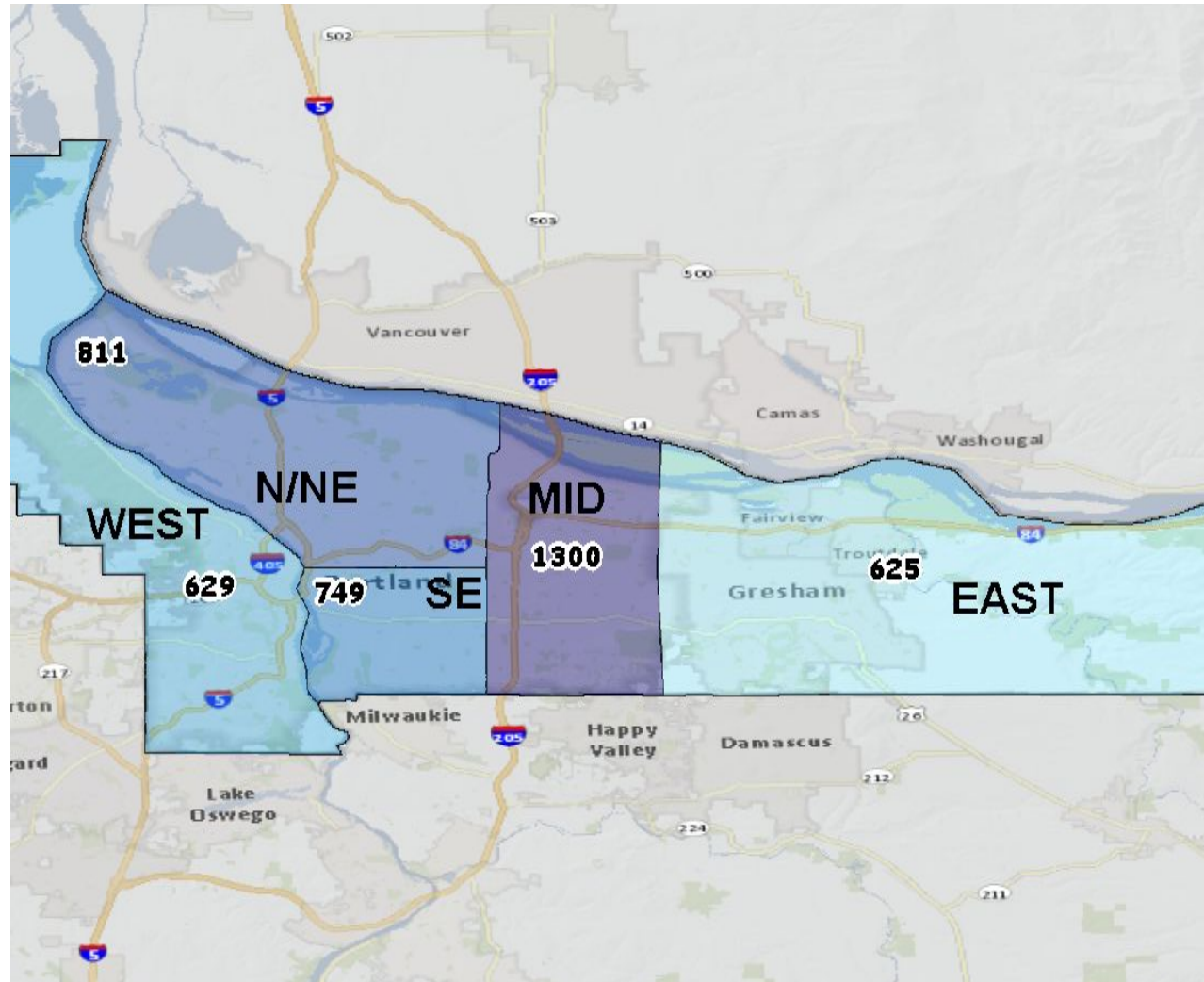
Portland State University Population Projections 2010-2025 (2025 Population / 2010 Population :: Individuals over 60 by Race :: By Multnomah County ADVSD Branch service area)

60+ Population Change By Region (Smaller Movers)

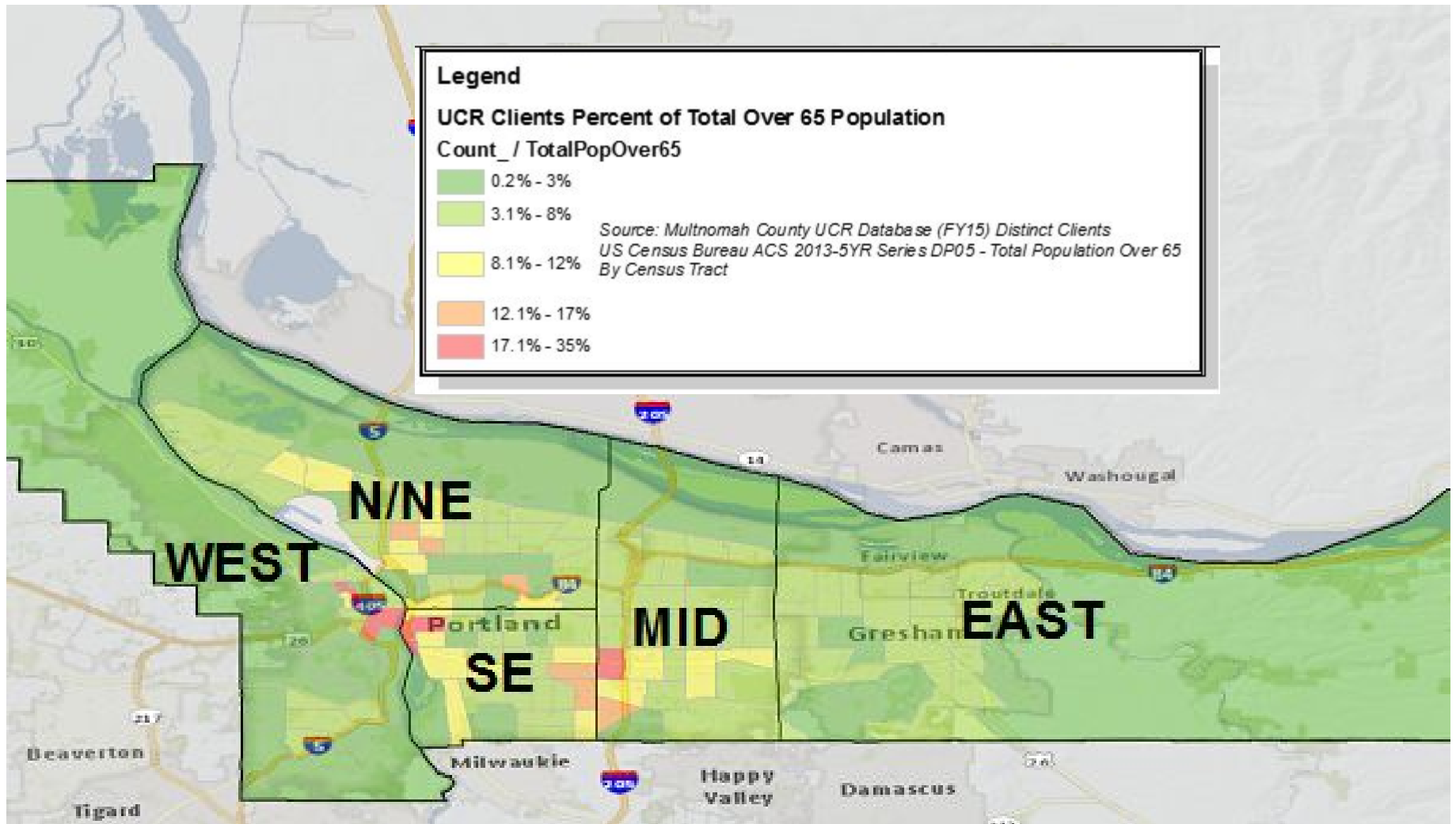


Portland State University Population Projections 2010-2025 (2025 Population / 2010 Population :: Individuals over 60 by Race :: By Multnomah County ADVSD Branch service area)

of Clients living within Service Area



Client Distribution Hot Spots



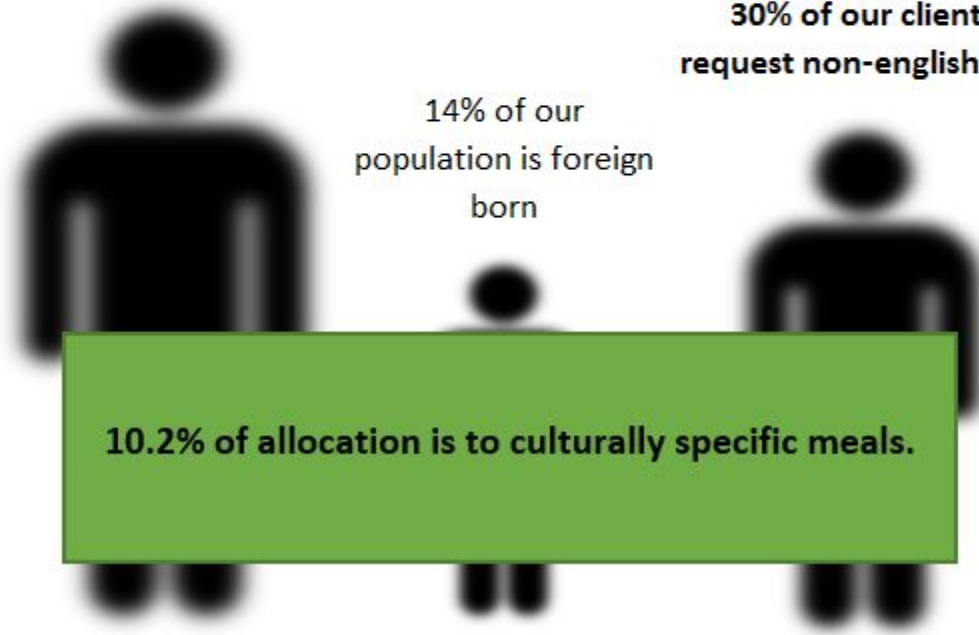
Food Program

15% of our 65+
population identifies
themselves as Non-White
or Hispanic

**44% of our 65+ client
population identifies
themselves as Non-White
or Hispanic**

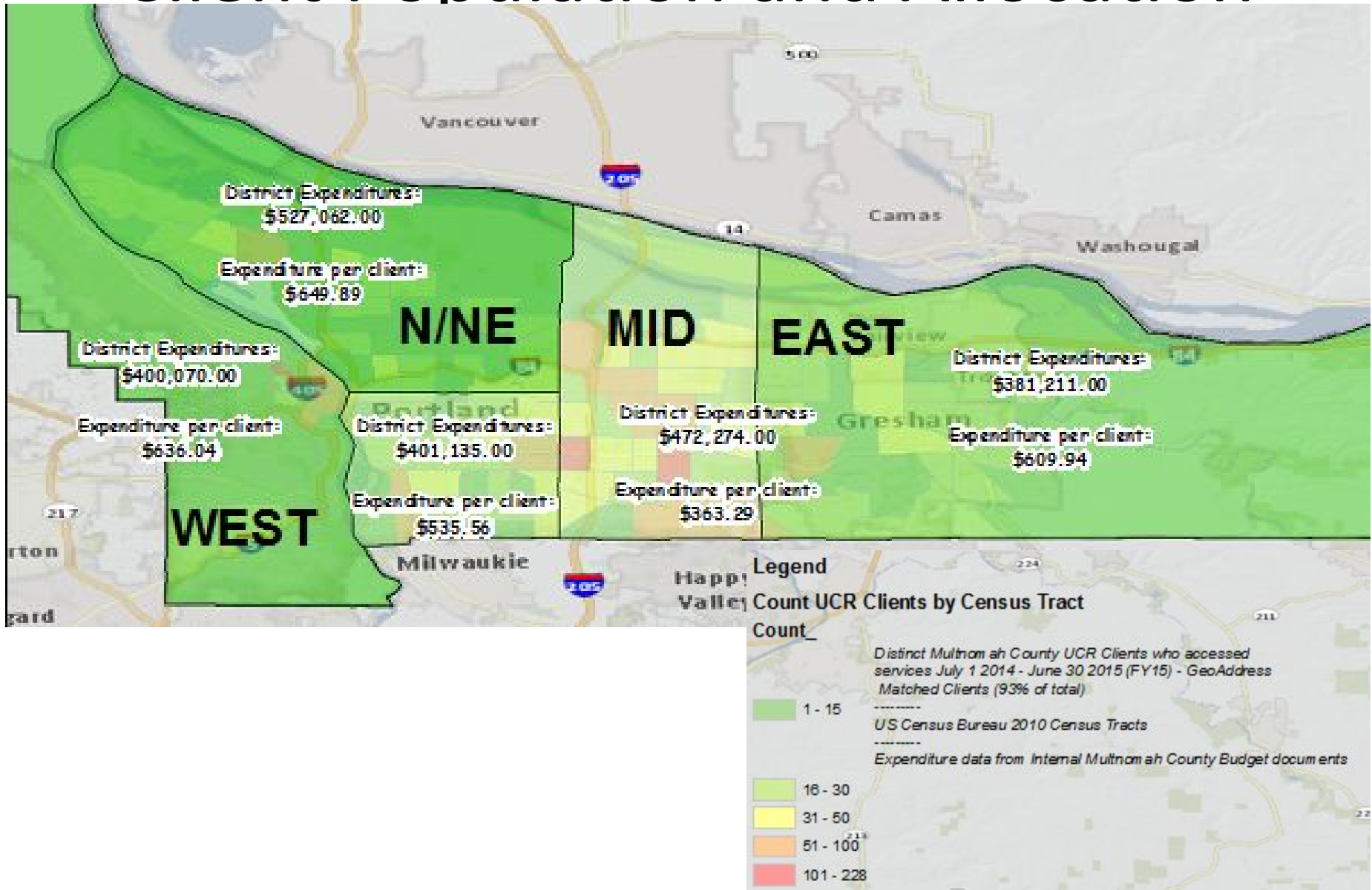
**30% of our clients
request non-english text**

14% of our
population is foreign
born

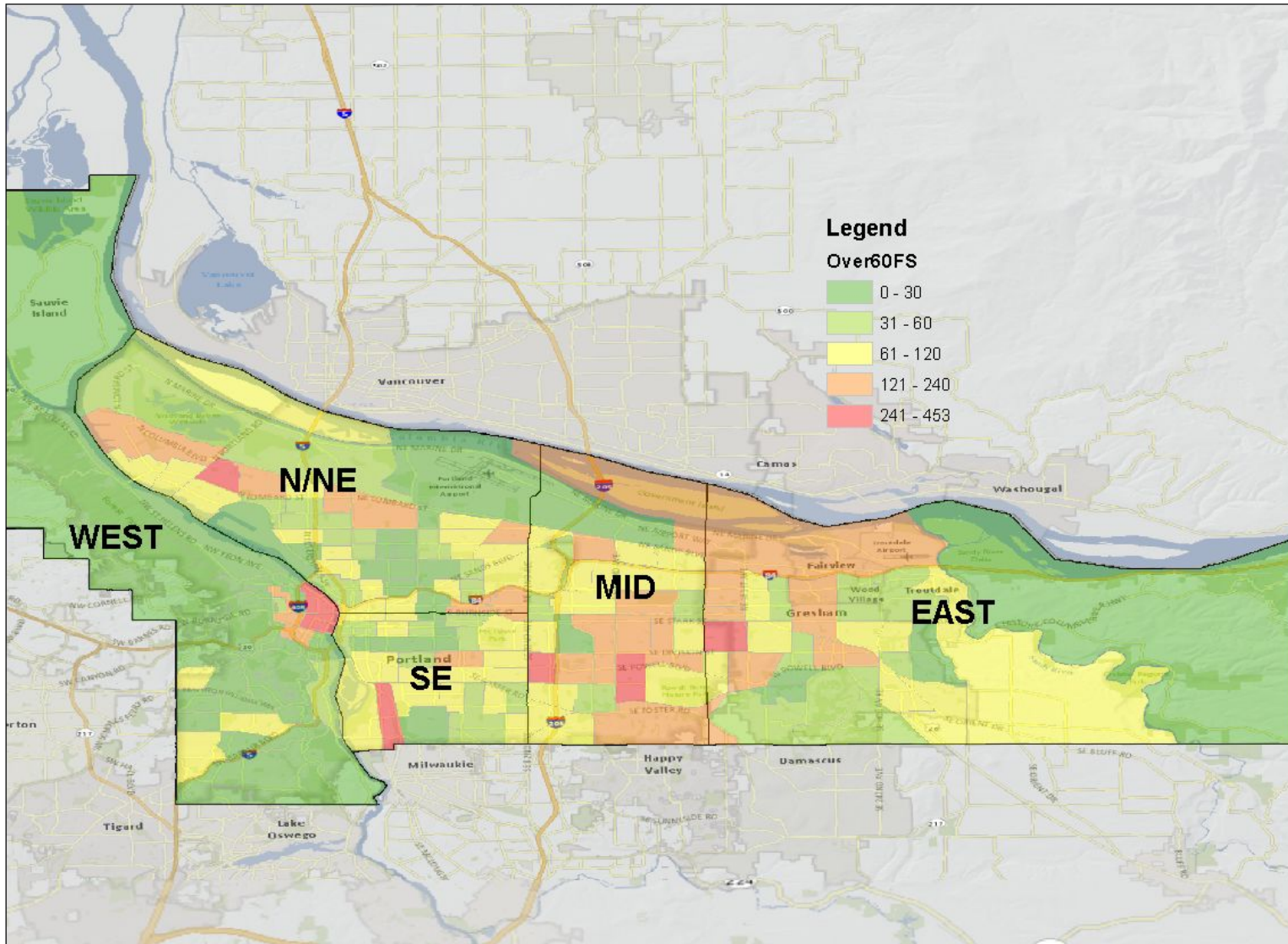


10.2% of allocation is to culturally specific meals.

Client Population and Allocation

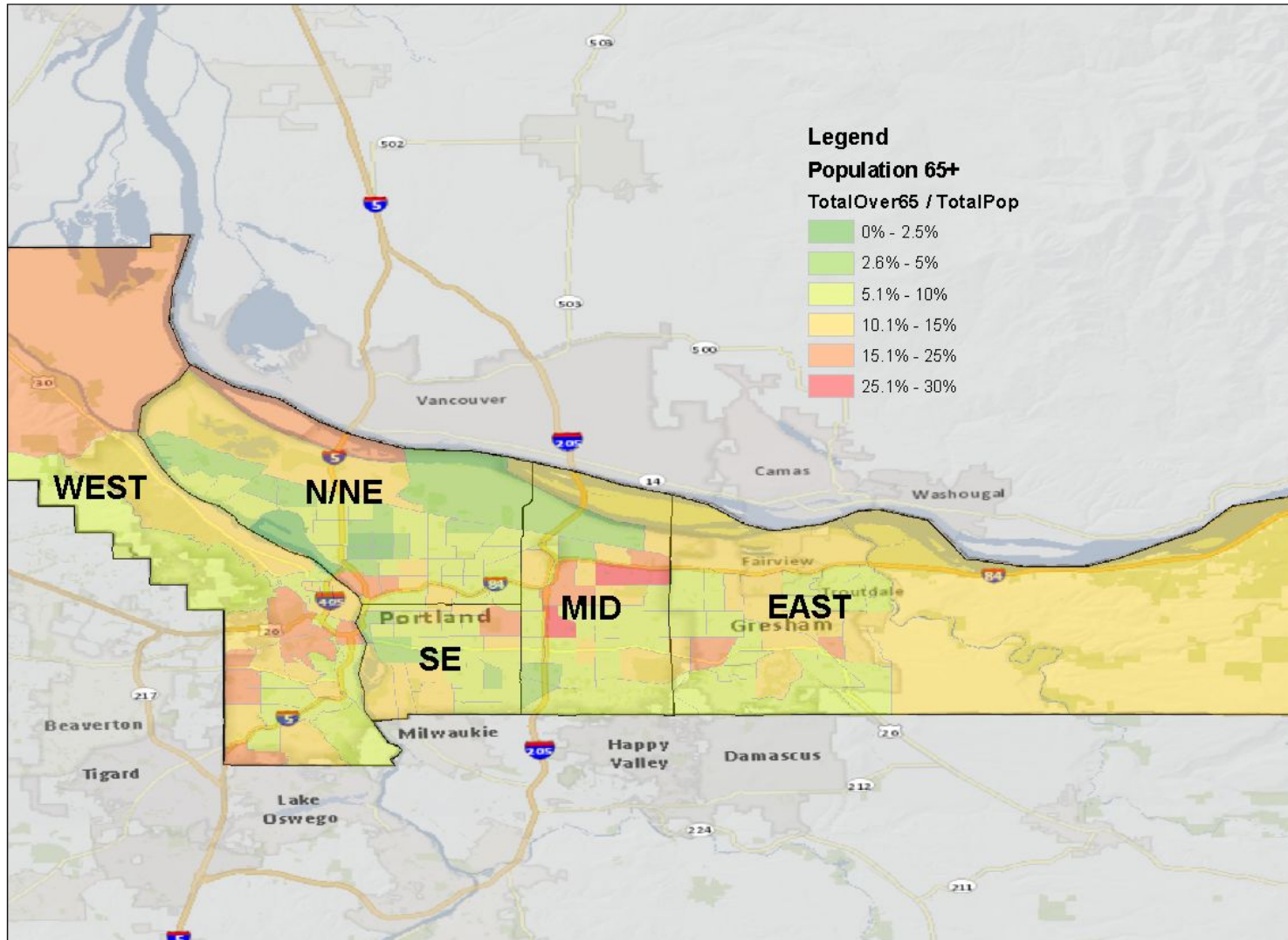


SNAP Distribution



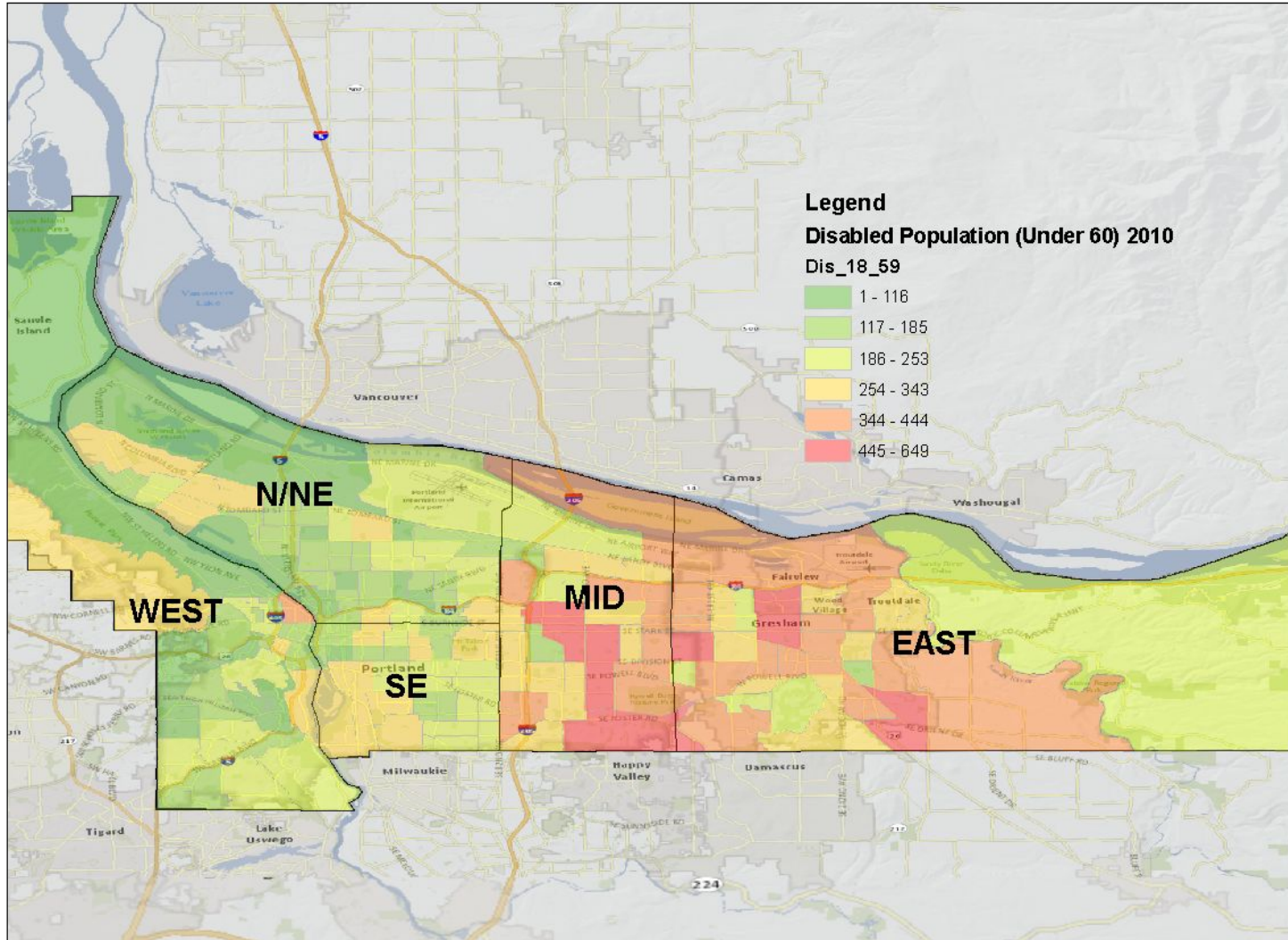
Demographics

Elderly Population (65+)



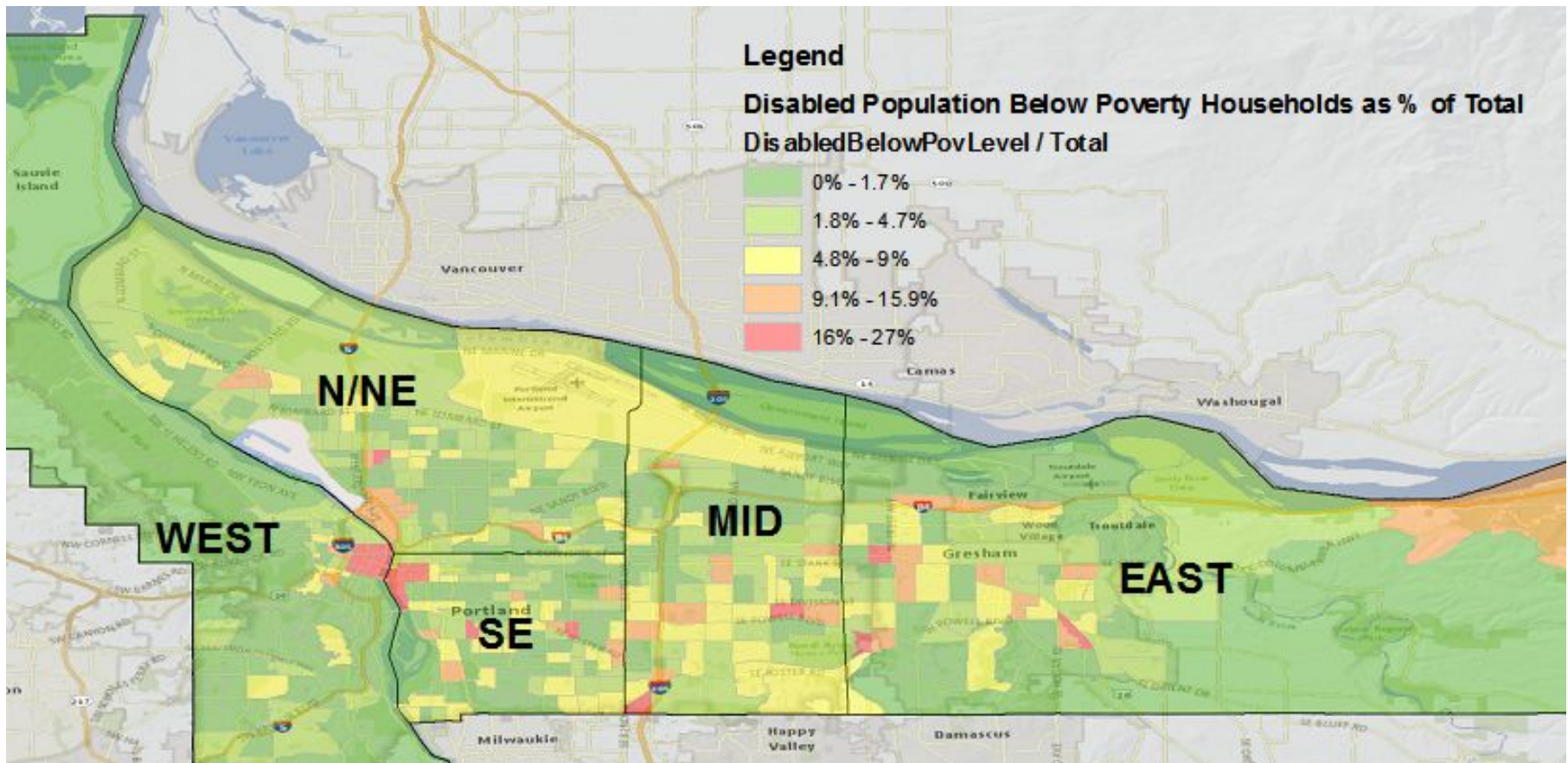
Demographics

Disabled Population (18-59)



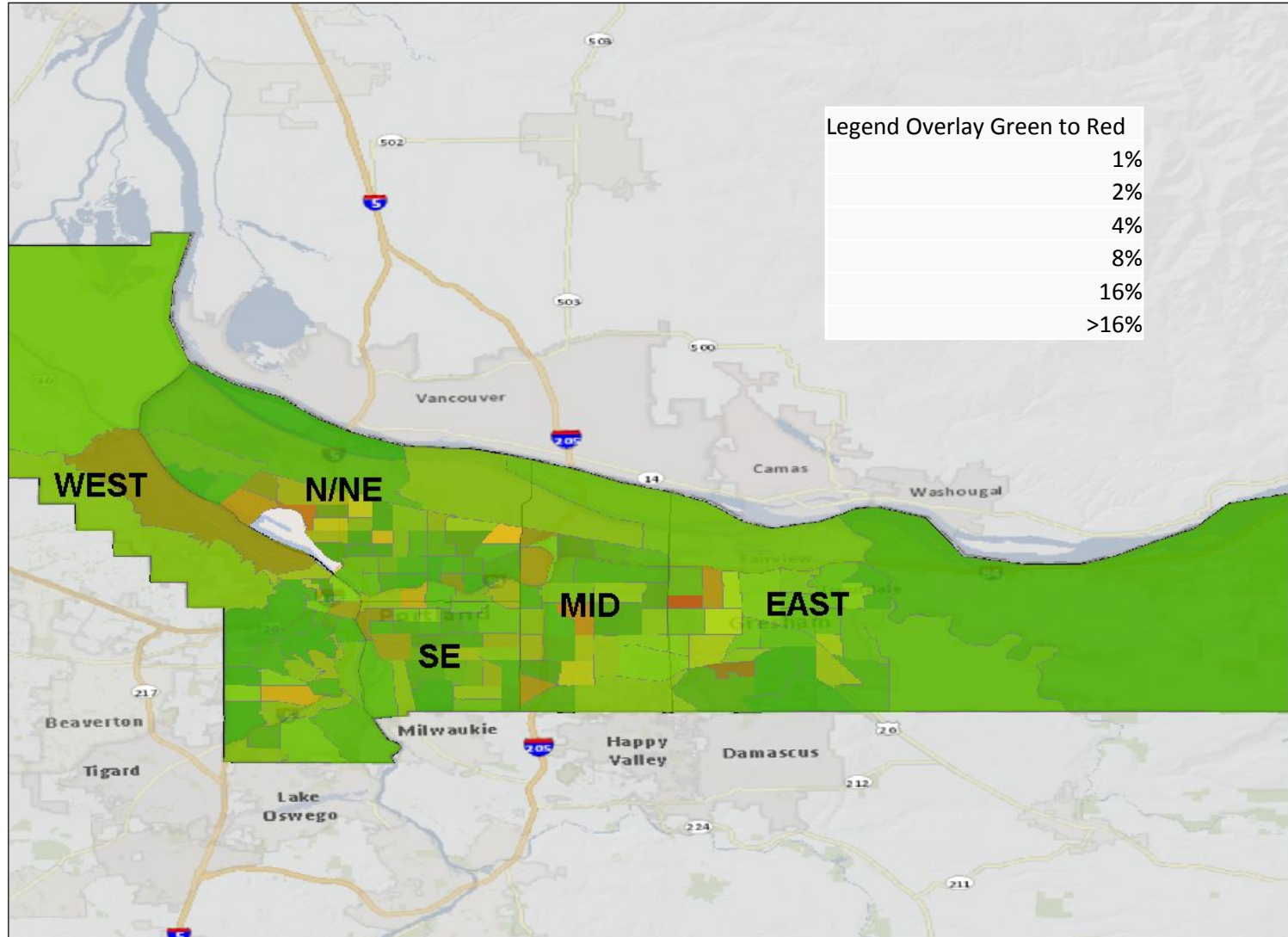
Demographics

Impoverished Disabled Population



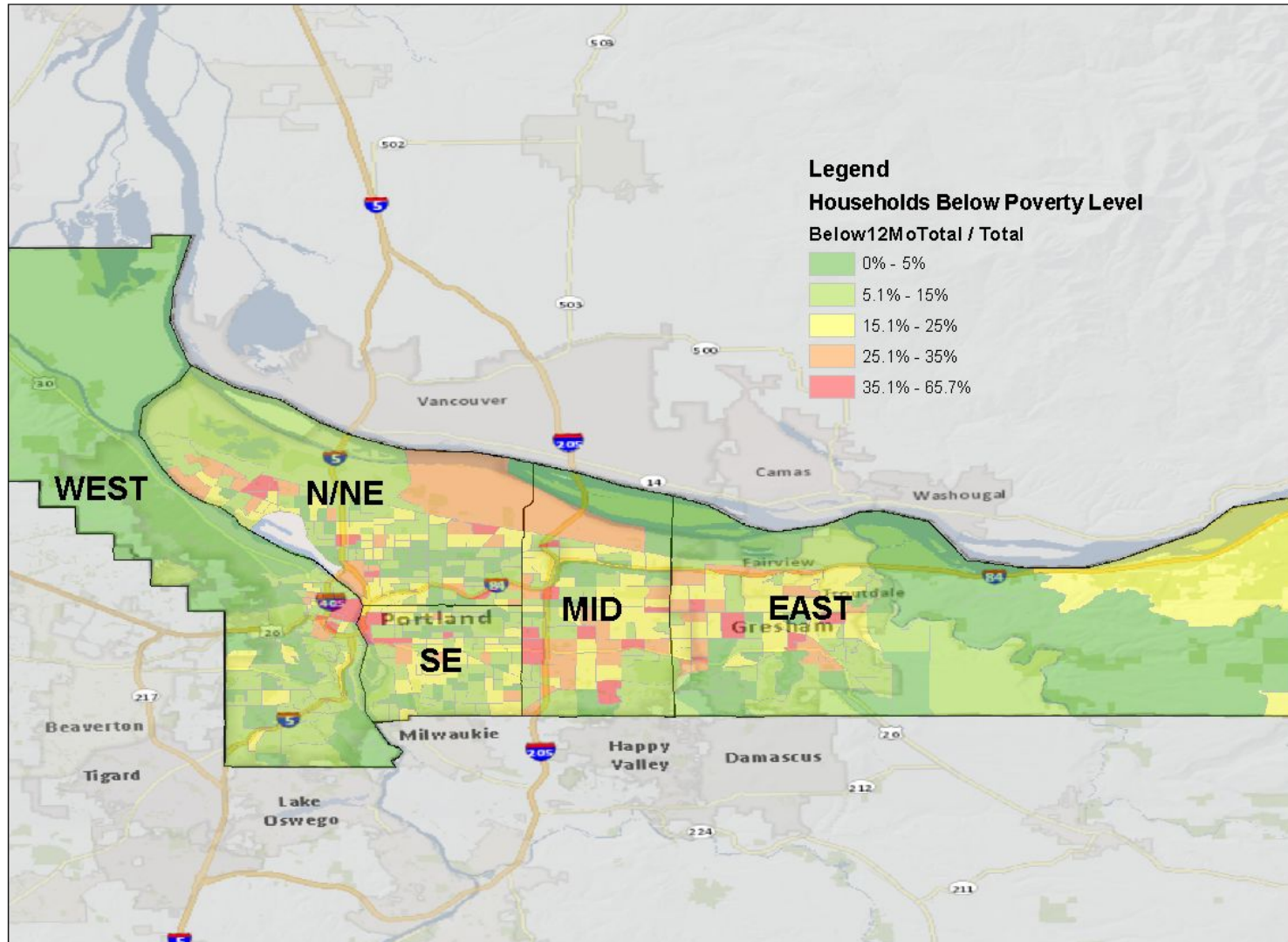
Demographic Distribution

All non-white overlay



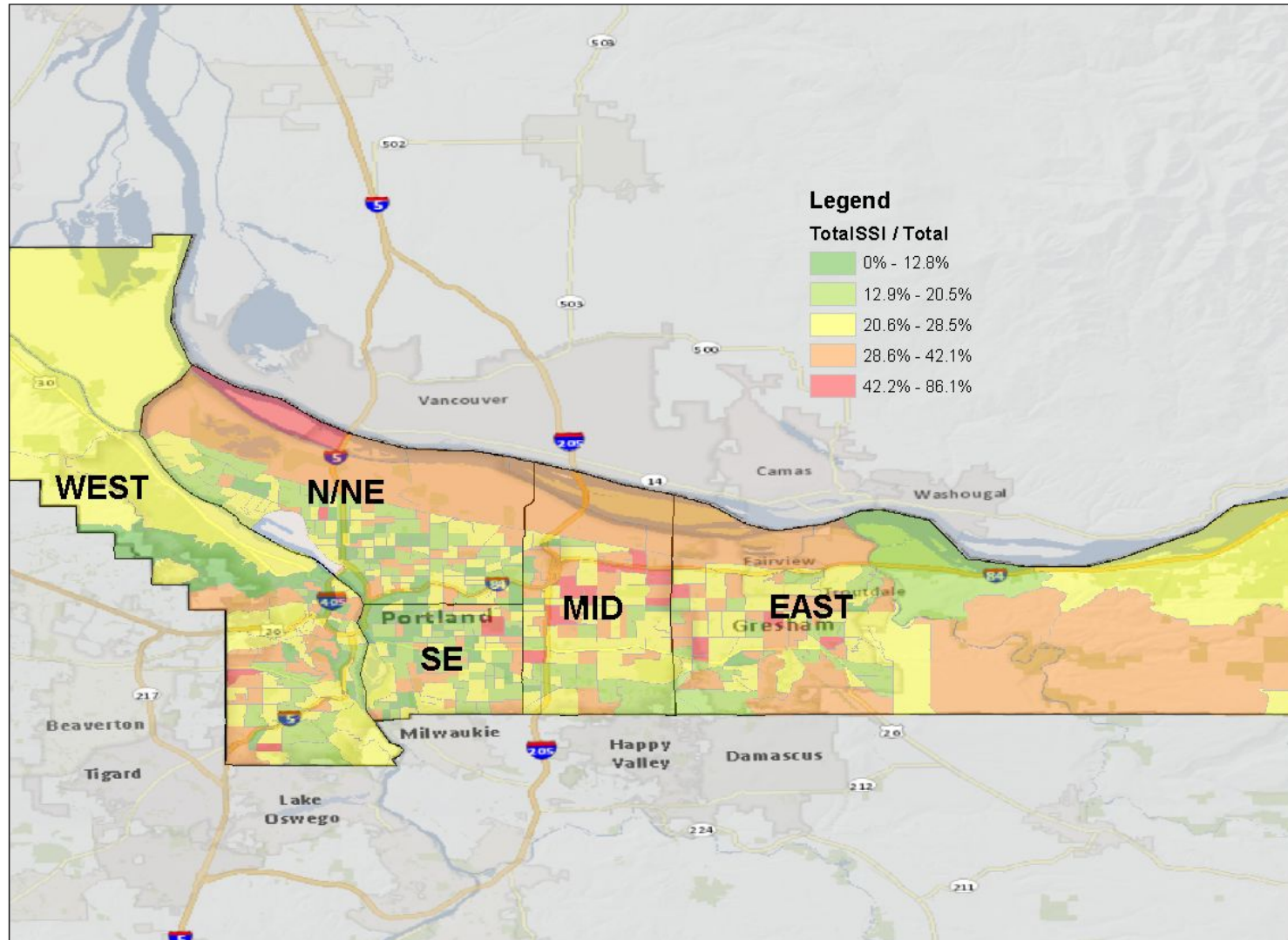
Economics

% of Households below Poverty Level

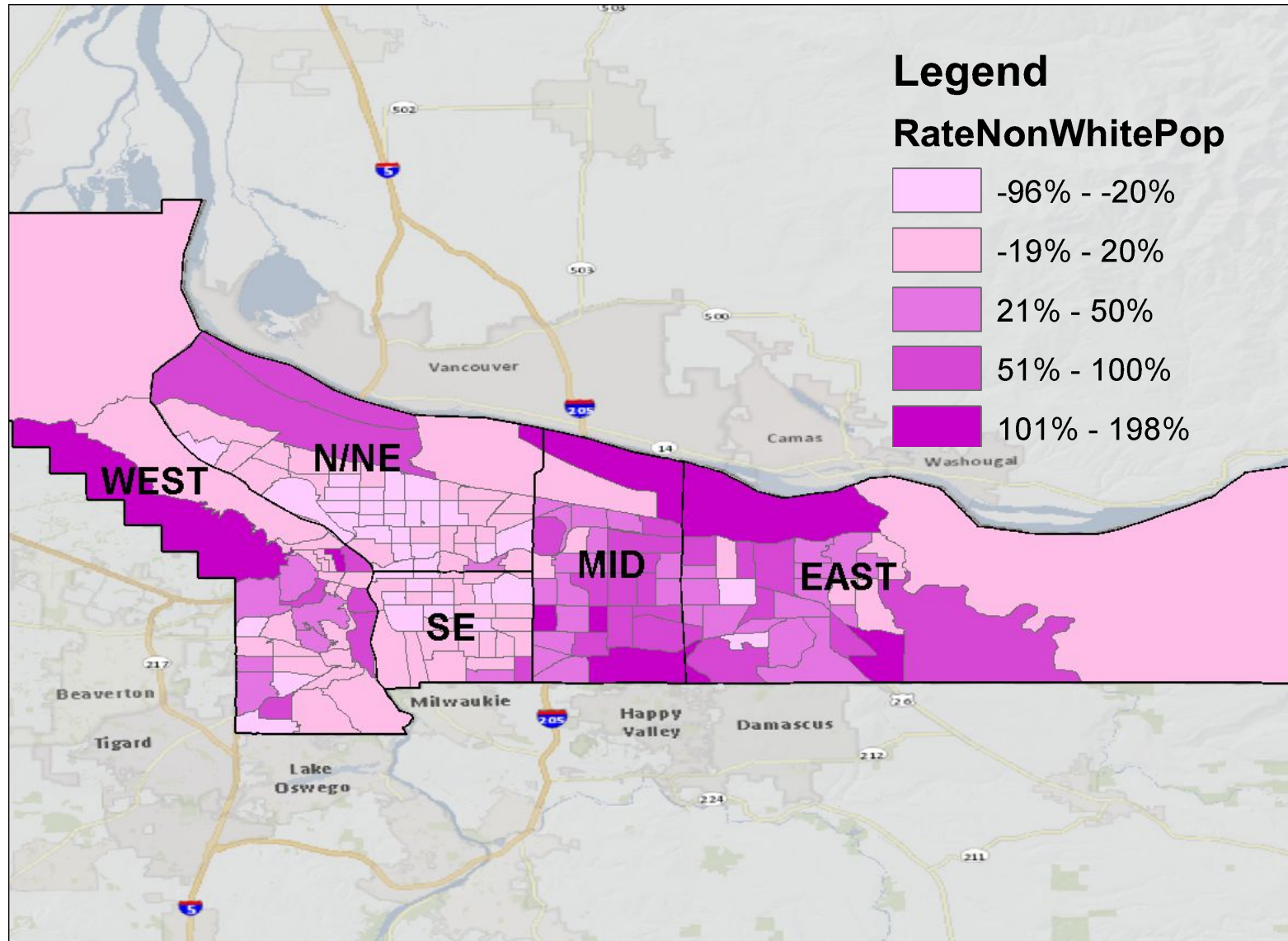


Economics

% of Households receiving SSI



2000-2010 Migration (Non-White)



Let's take a moment . . .



About the Area Plan

- Area Agency on Aging (AAA) requirement
- Comprehensive and coordinated service delivery system
- Online at Research & Evaluation – it's 110 pages!



Issue Areas

- **Family Caregivers**
- **Information & Assistance (I&A) and Aging & Disability Resource Connection (ADRC)**
- **Elder Rights & Legal Assistance**
- **Health Promotion**
- **Older Native Americans**
- **Nutrition Services**
- **Additional – determined by needs assessment**

2013-2016 Family Caregivers Goal

Family caregivers will be informed about and have access to resources that can assist them in caring for older adults.

Objectives

1. FCSP will sponsor three (3) public events yearly to provide information to family caregivers.
2. The FCSP Coordinator will meet six (6) times per year with community partners to promote I & A services provided by the ADRC Helpline.
3. District Center case managers and community agencies will provide a minimum of 3,500 hours of Options Counseling to family caregivers annually.



The Planning Process (2013-2016)

Information and data-gathering

- **Consumer Satisfaction Survey**
- **ADRC – reports, unmet needs**
- **Open Houses, Listening Sessions**
- **Focus Area/Integration Workgroup**

Resources

- **2014 (5-year estimate) - U.S. Census**
- **“Communities of Color in Multnomah County: An Unsettling Profile” – Population Specific**
- **PSU Population Projections**
- **Multnomah County Age-Friendly Action Plan & supporting documents**

What's Next?

- **2013-2016 Data collection and research**
- **Jan-Feb: ADVSD staff draft goals, determine workgroup needs, “Tool for Collecting Community Feedback” finalized.**
- **Mar: Focus area statements & draft goals finalized. Public process schedule finalized. Materials developed for public event.**

And Then . . .

- **Apr-Jun: Public process. Budget development. Drafting other areas of plan.**
- **Jun-Jul: Integrating community feedback into plan.**
- **Jul-Aug: Draft completed.**
- **Sep: Public hearings & approval by BCC & advisory councils.**
- **October 3: 2017-2020 Area Plan Due**

Relationship to RFP, Age-Friendly

- **Goal of service equity embedded in Area Plan. RFP will reflect this goal.**
- **DC/EE/Nutrition contracts carry out objectives outlined in the Area Plan. RFP drafting begins in Jan 2017.**
- **Data gathered for Age-Friendly baseline assessment informs Area Plan & RFP.**
- **Age-Friendly Plan informed by goals identified in Area Plan.**
- **Annual updates to Area Plan and future RFPs involving identified Focus Areas necessarily inform and reflect one another.**

Public Process

- **Listening Sessions/Open Houses**
 - **Provide demographics for service area**
 - **Easy to read document outlining focus areas, draft goal statements**
 - **Interactive**
- **Public Hearings (one required, goal of four)**
 - **Mid, East, N/NE, Downtown**

Targeted Outreach

African American

LGBT

Latino/Hispanic

Asian American

Immigrant/Refugee

Houseless

Family Caregivers

People with
Disabilities

Veterans

Resident
Communities

Native American

Homebound

Gresham Fairview/Troutdale Mid county Downtown West North/NE

Data that Tells a Story

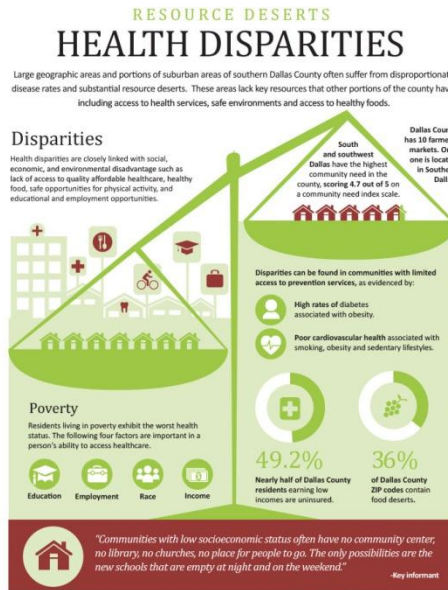
- Accessible to non-English speakers
- Uses equity lens
- Cites sources
- Interesting and compelling
- Easy for lay people to understand

Demographic Information (5-8 slides)

- Race/Ethnicity
- Age (55, 65, 85+)
- Disability (18-65)
- Poverty
- Language

Service Information (2 -3 slides)

- Client counts and demographics
- Service areas and counts

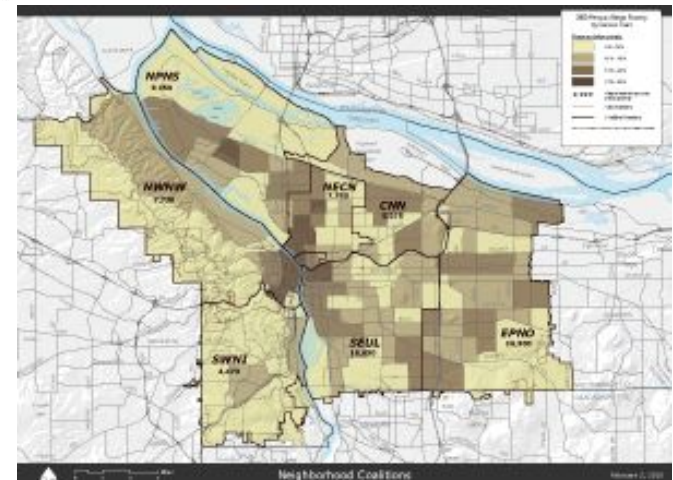


FREEDOM NETWORK Member Report 2014



A human trafficking case can last as long as seven years and may include identification, criminal justice advocacy, social service provision and case management, counseling, immigration relief, family unification, civil litigation, adjustment to legal permanent residency, and applications for citizenship. In some cases, Freedom Network members have become involved in the criminal defense of trafficked persons or assisted survivors with vacating prior convictions. This report is available at www.freedomnetworkusa.org

#FNReport

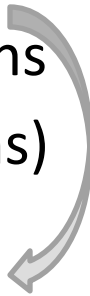


Community Discussion

What Do We Know?

Previous Area Plan goals
with results and lessons
(static, printed, #s, graphs)

Current draft goals &
objectives (open ended,
images, interactive)



What do we need to do?



Family caregivers will be informed about and have access to resources that can assist them in caring for older adults.

Objective:

District Center case managers and community agencies will provide a minimum of 3,500 hours of Options Counseling to family caregivers annually.

Results:

Average of 2,400 hours provided annually

Did not meet target

Analysis:

Open House Format



Writing the Area Plan



Advisory Council Role(s) in Area Plan Development

- Guide community engagement plan
- Convene, attend, participate, and facilitate community sessions (April-June)
- Educate public about ADVSD services as related to Area Plan
- Advise on integration of community feedback into plan (June-August)
- Host/promote Public Hearings in September
- Approve Area Plan and Area Plan budget
- Advise on annual updates to Area Plan

Remember this?





Rebecca Miller (503) 988-3769
rebecca.miller@multco.us